

Beef Feet and Leg Structure



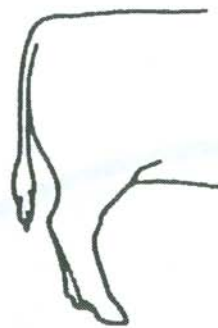
Correct



Cow-Hocked
or Splayfooted



Bowlegged or
Pigeon-Toed



Sickle-Hocked



Correct



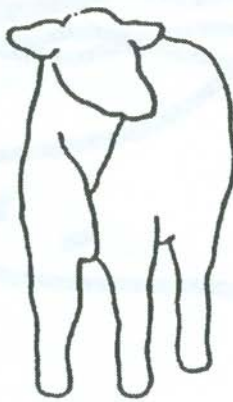
Post-Legged



Knocked-Kneed
or Splayfooted



Bowlegged or
Pigeon-Toed



Correct



Buck-Kneed



Correct



Calf-Kneed