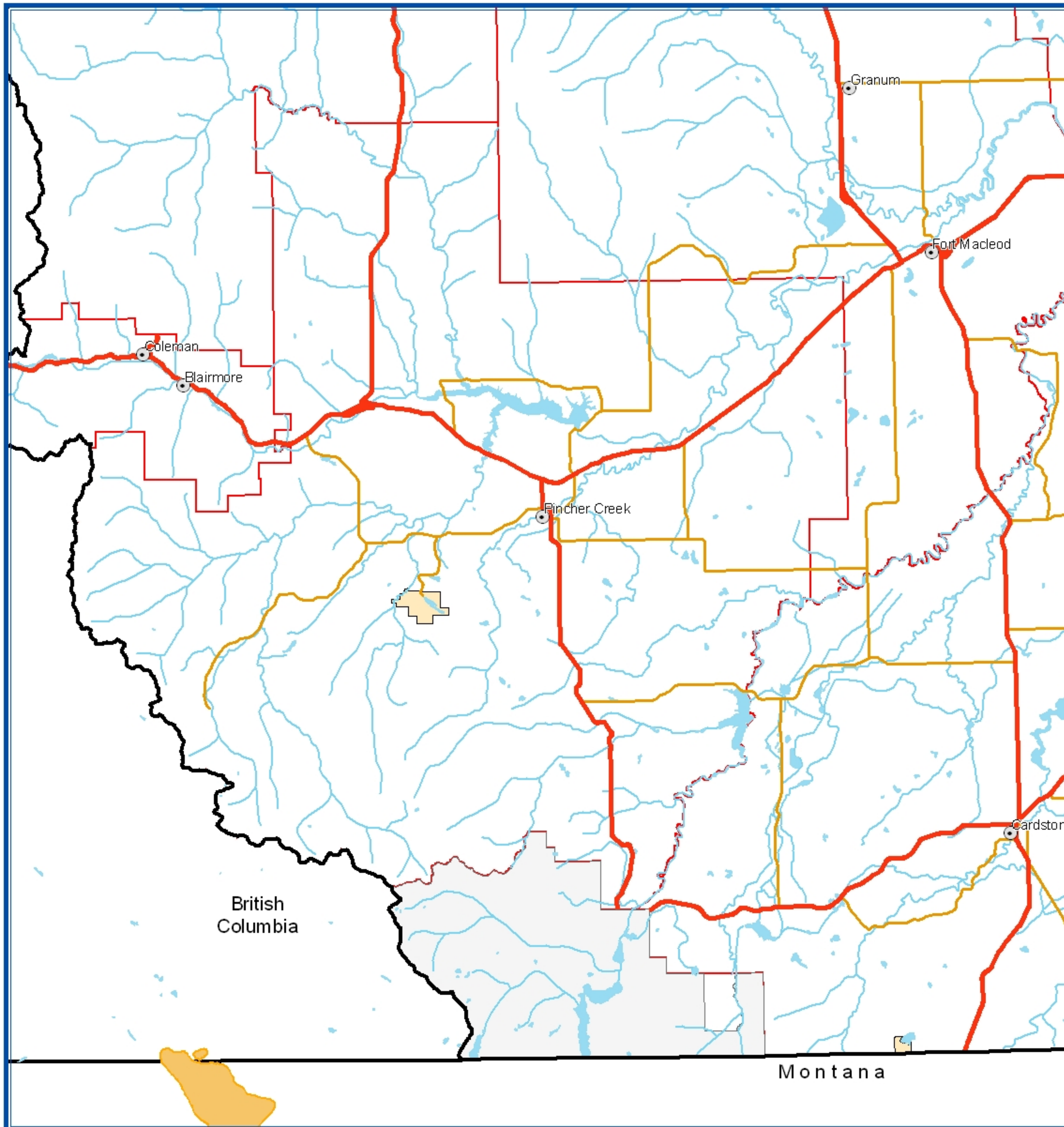


MOUNTAIN PINE BEETLE 1976



- MPB Infestation
- Primary Highways
- Secondary Highways
- Hydrography Lines
- Hydrography Polygons
- National Park
- Provincial Park
- Cities
- Municipality

0 5 10 20 30
Kilometres

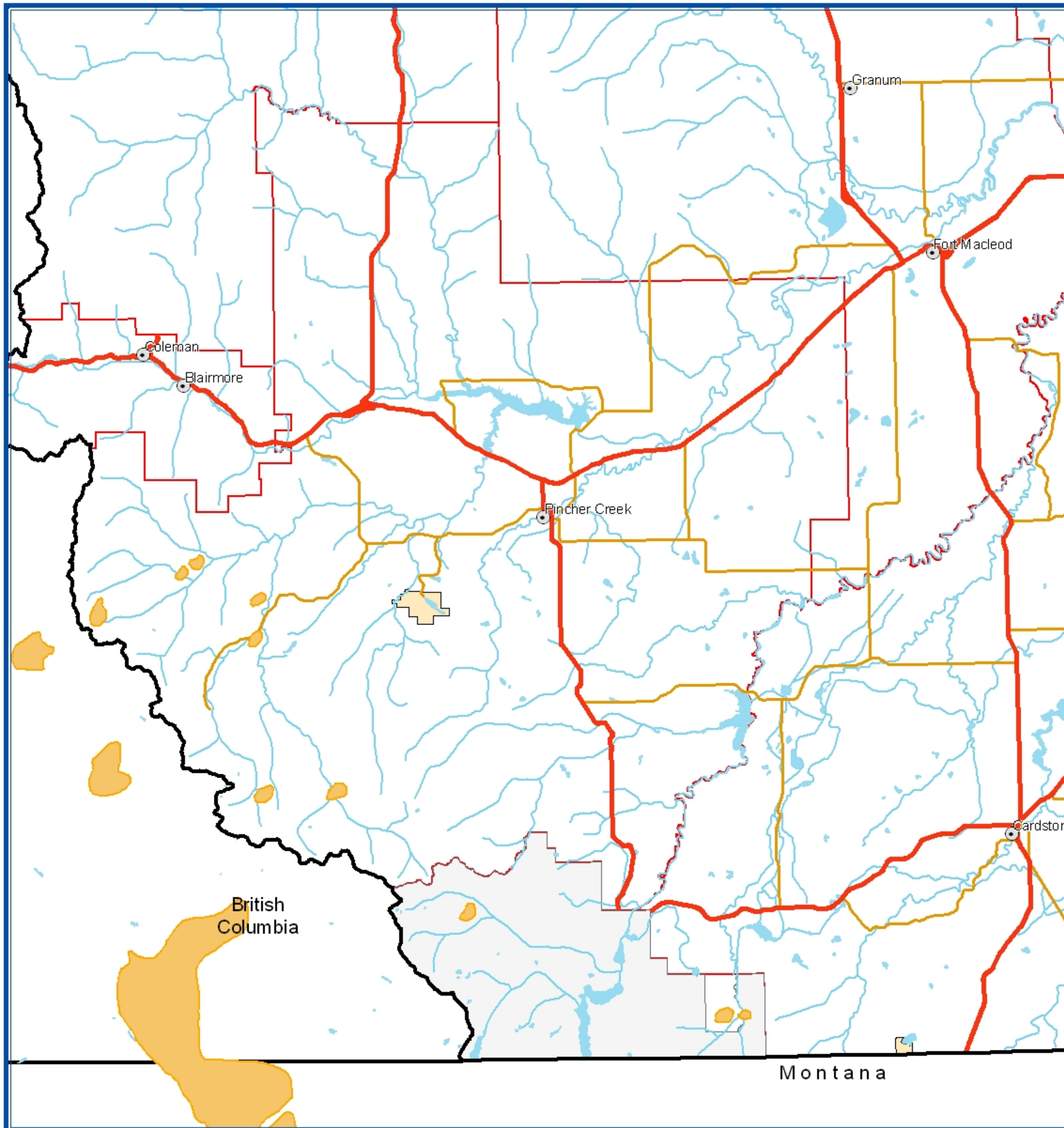


Alberta
SUSTAINABLE RESOURCE
DEVELOPMENT

Public Lands
& Forests

Produced by Forest Health of The Public
Lands and Forests Division, 2004.

MOUNTAIN PINE BEETLE 1977



- MPB Infestation
- Primary Highways
- Secondary Highways
- Hydrography Lines
- Hydrography Polygons
- National Park
- Provincial Park
- Cities
- Municipality

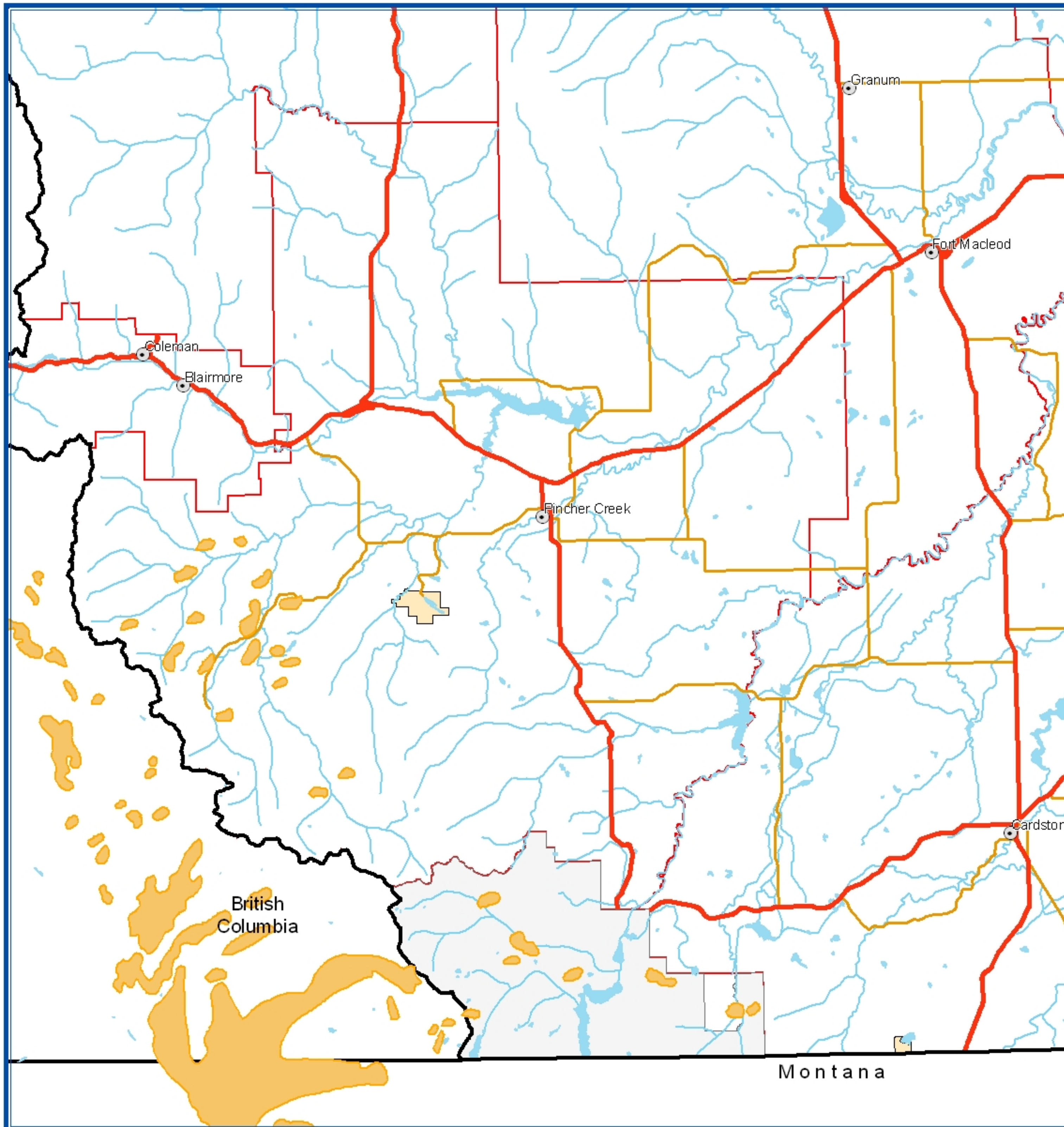
0 5 10 20 30
Kilometres



Alberta
SUSTAINABLE RESOURCE
DEVELOPMENT
**Public Lands
& Forests**

Produced by Forest Health of The Public
Lands and Forests Division, 2004.

MOUNTAIN PINE BEETLE 1978



- MPB Infestation
- Primary Highways
- Secondary Highways
- Hydrography Lines
- Hydrography Polygons
- National Park
- Provincial Park
- Cities
- Municipality

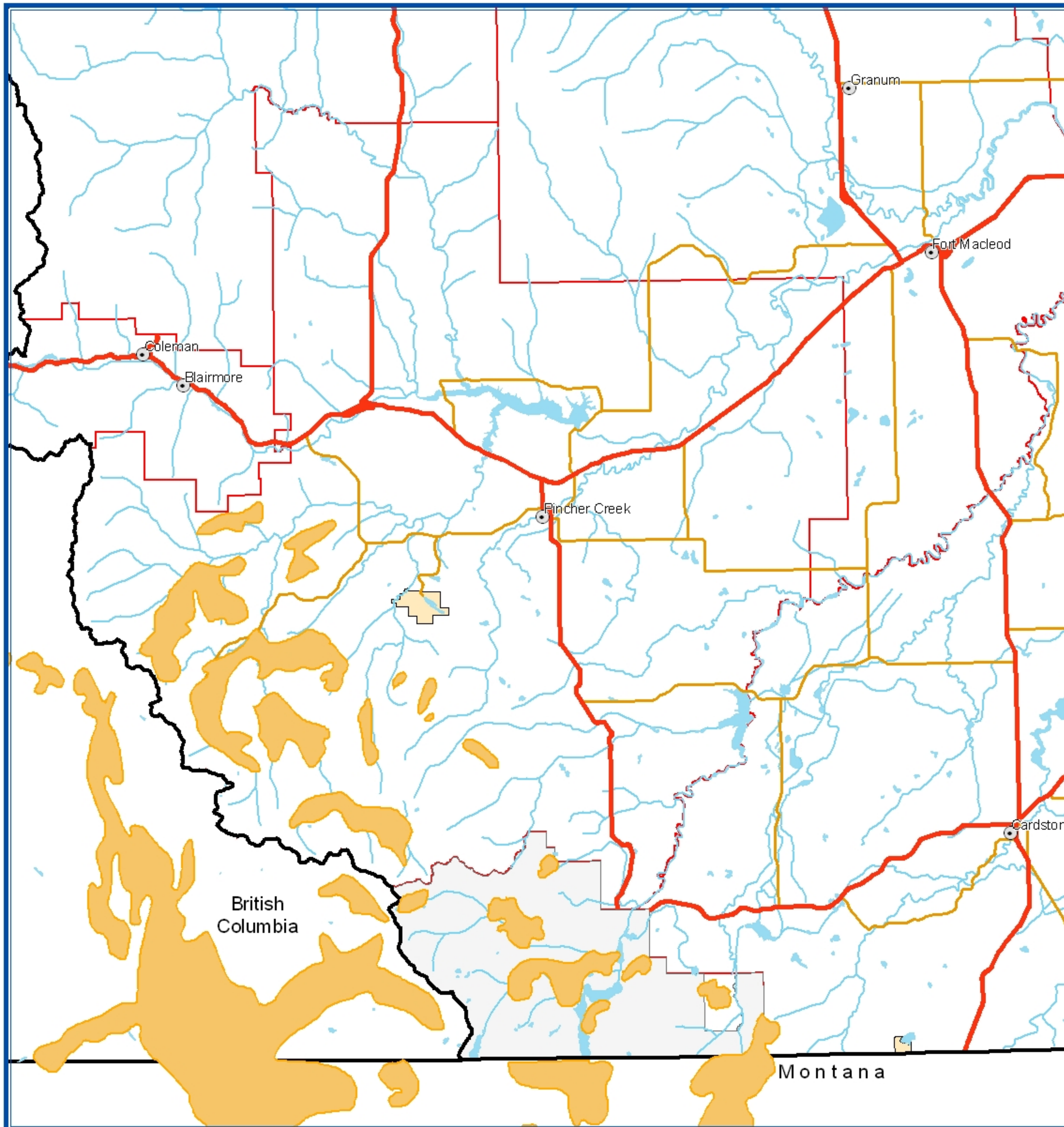
0 5 10 20 30
Kilometres



Alberta
SUSTAINABLE RESOURCE
DEVELOPMENT
**Public Lands
& Forests**

Produced by Forest Health of The Public
Lands and Forests Division, 2004.

MOUNTAIN PINE BEETLE 1979



- MPB Infestation
- Primary Highways
- Secondary Highways
- Hydrography Lines
- Hydrography Polygons
- National Park
- Provincial Park
- Cities
- Municipality

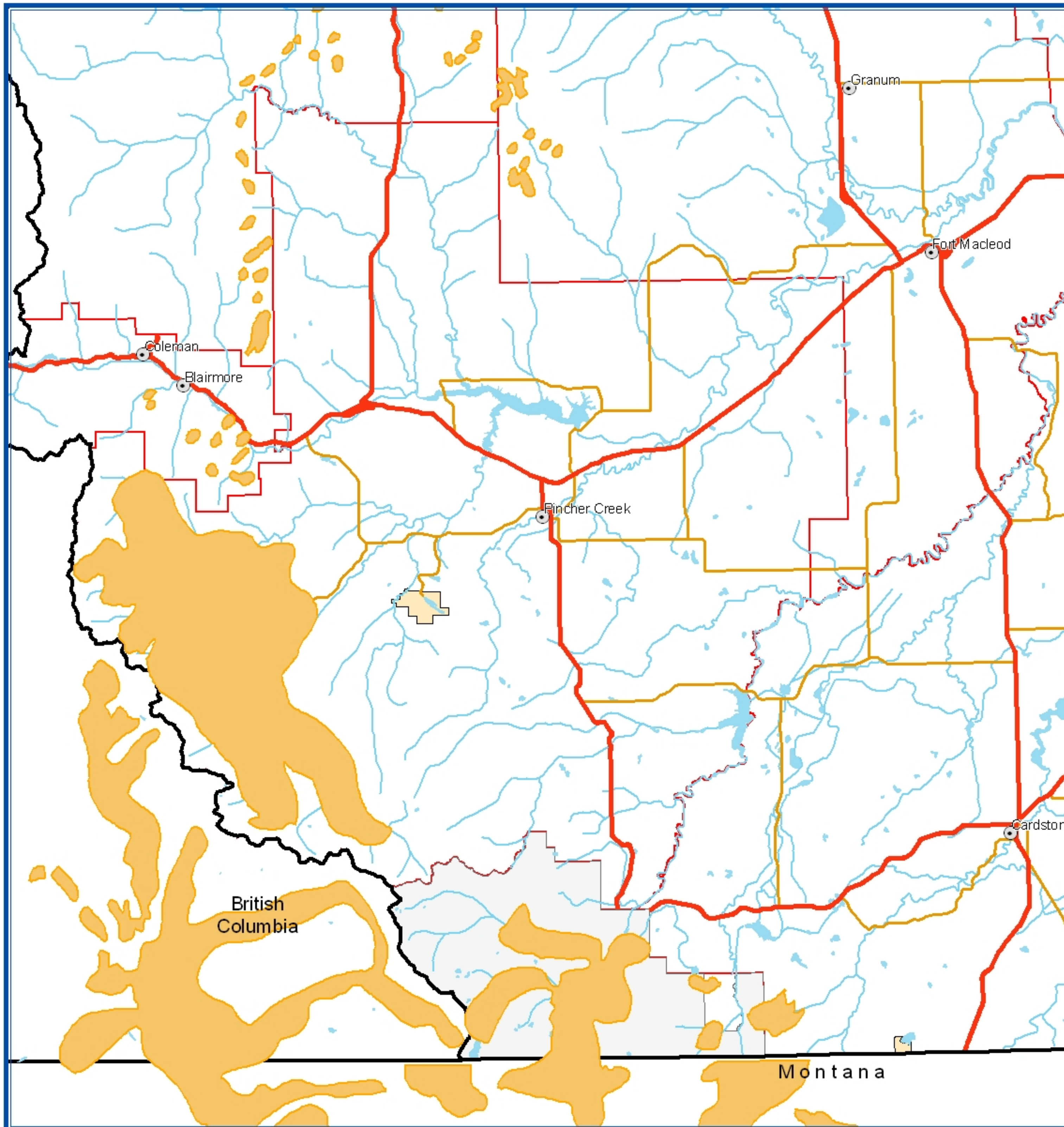
0 5 10 20 30
Kilometres



Alberta
SUSTAINABLE RESOURCE
DEVELOPMENT
**Public Lands
& Forests**

Produced by Forest Health of The Public
Lands and Forests Division, 2004.

MOUNTAIN PINE BEETLE 1980



- MPB Infestation
- Primary Highways
- Secondary Highways
- Hydrography Lines
- Hydrography Polygons
- National Park
- Provincial Park
- Cities
- Municipality

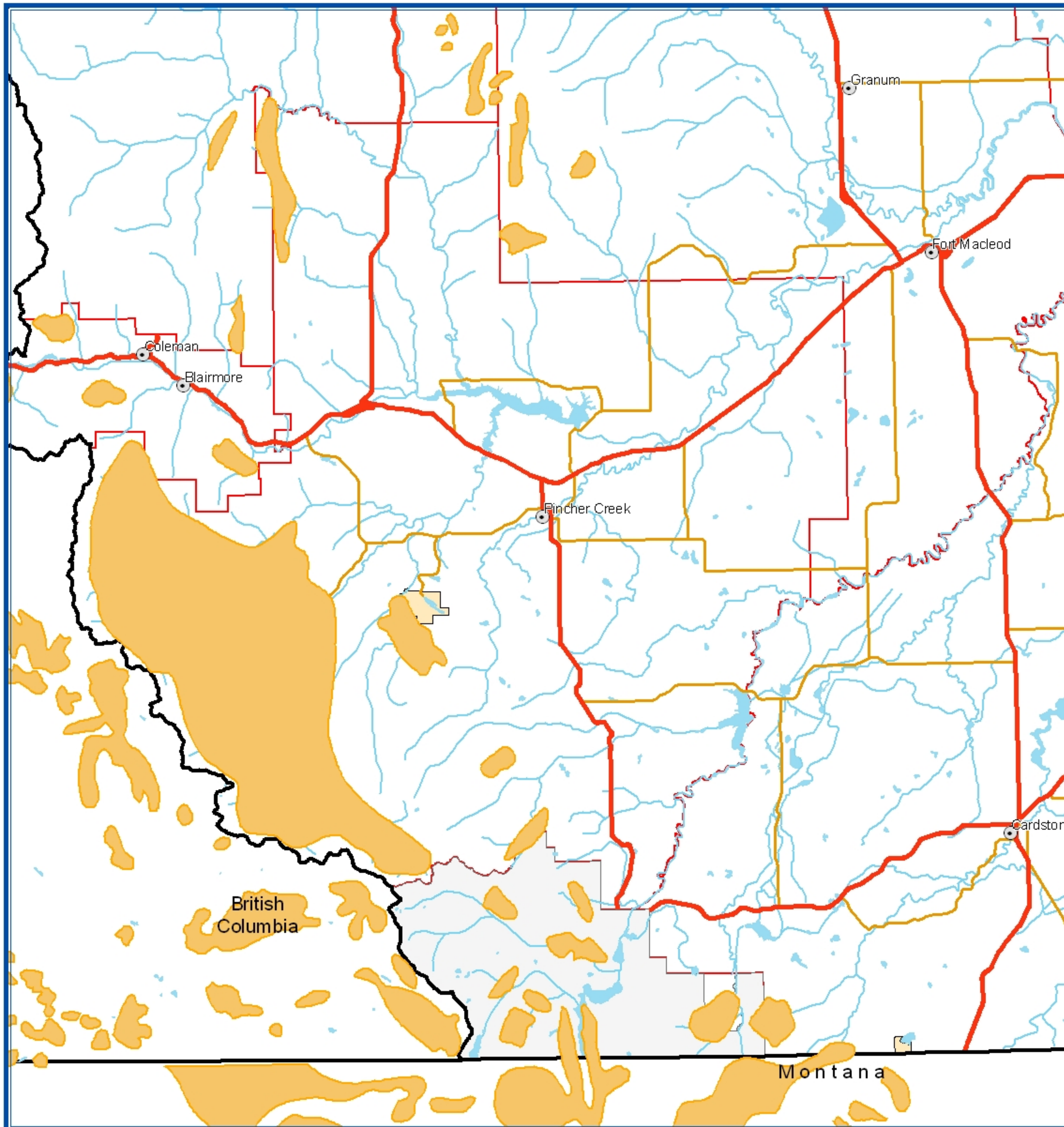
0 5 10 20 30
Kilometres



Alberta
SUSTAINABLE RESOURCE
DEVELOPMENT
**Public Lands
& Forests**

Produced by Forest Health of The Public
Lands and Forests Division, 2004.

MOUNTAIN PINE BEETLE 1981



- MPB Infestation
- Primary Highways
- Secondary Highways
- Hydrography Lines
- Hydrography Polygons
- National Park
- Provincial Park
- Cities
- Municipality

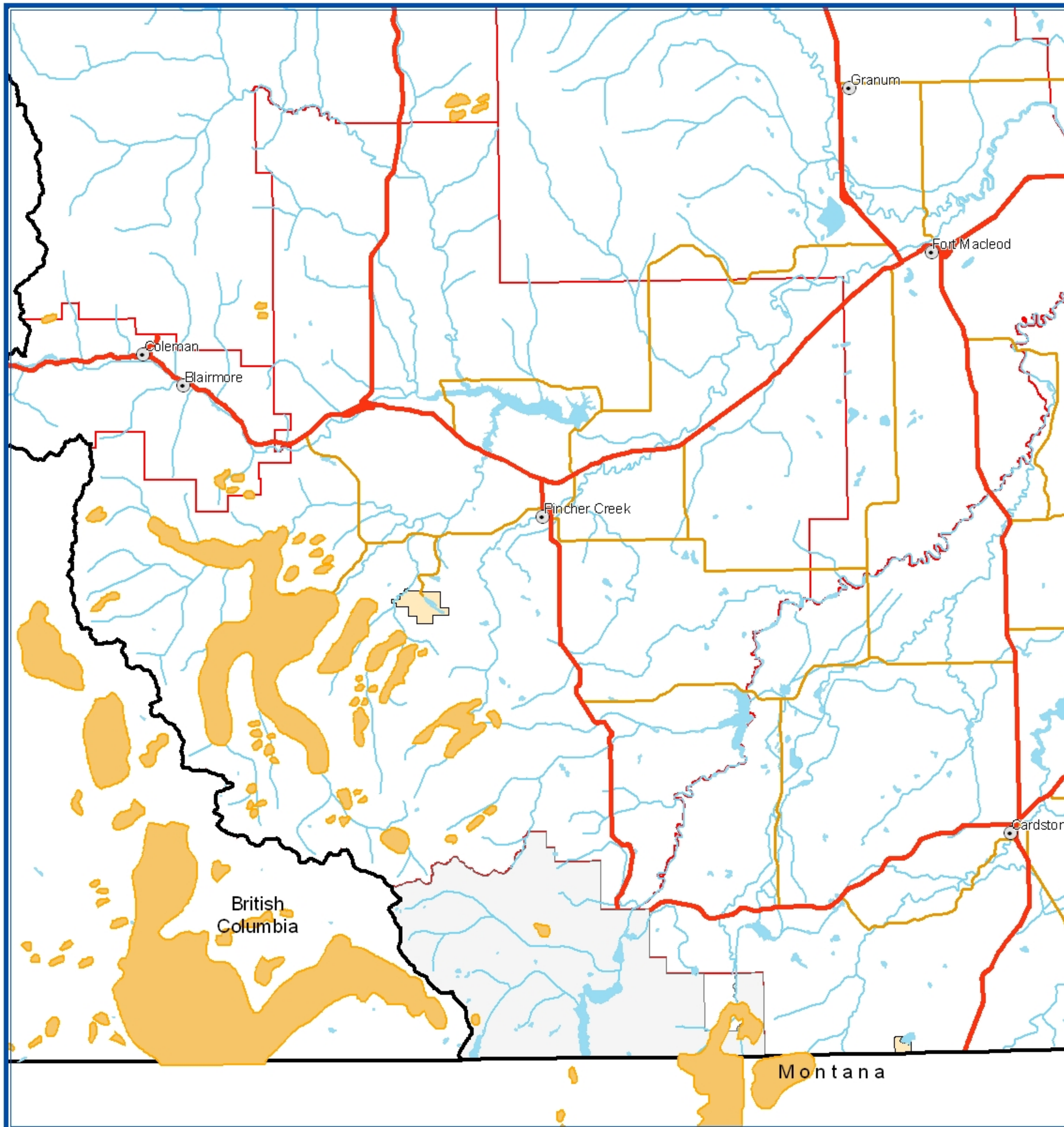
0 5 10 20 30
Kilometres



Alberta
SUSTAINABLE RESOURCE
DEVELOPMENT
**Public Lands
& Forests**

Produced by Forest Health of The Public
Lands and Forests Division, 2004.

MOUNTAIN PINE BEETLE 1982



- MPB Infestation
- Primary Highways
- Secondary Highways
- Hydrography Lines
- Hydrography Polygons
- National Park
- Provincial Park
- Cities
- Municipality

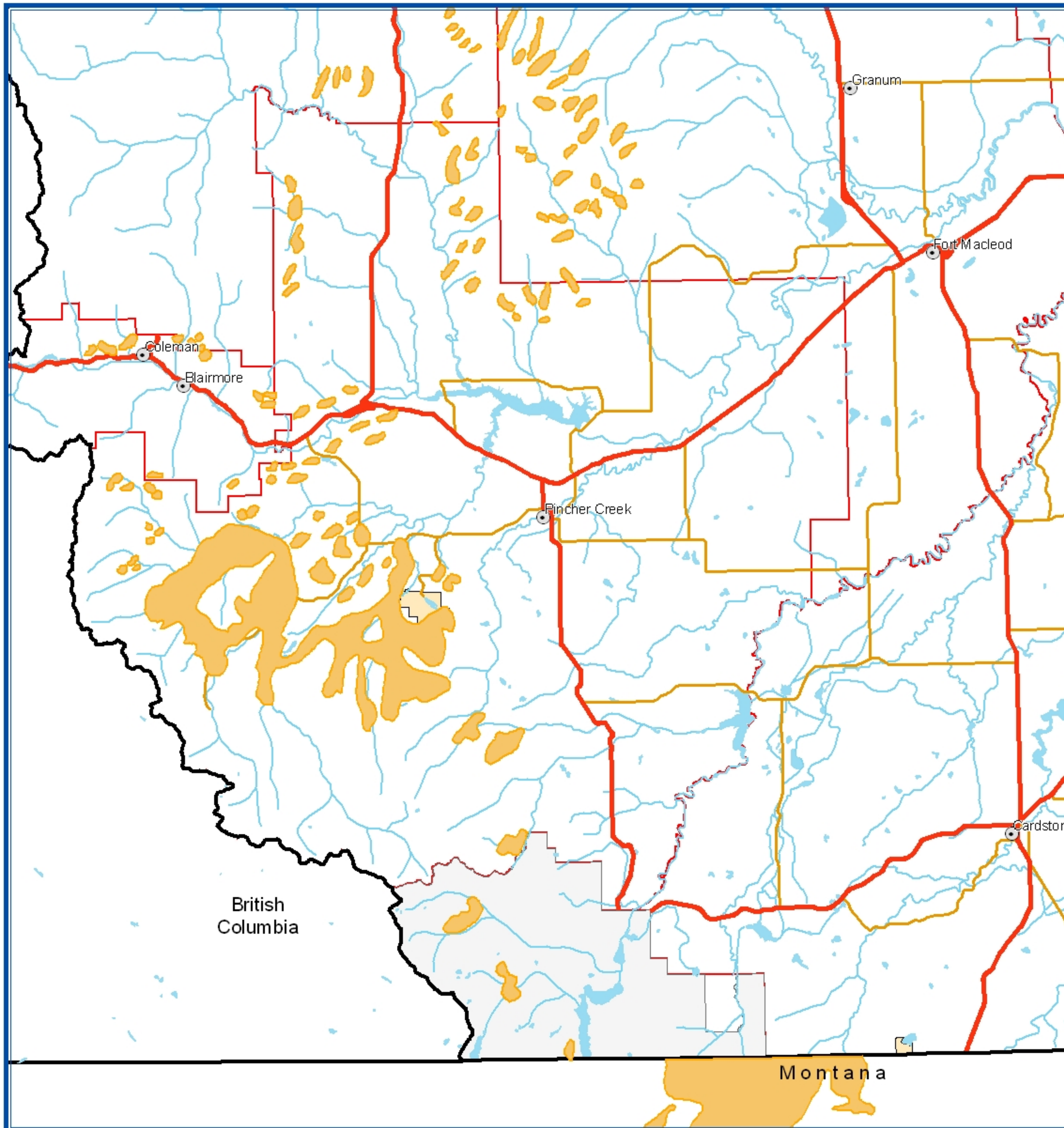
0 5 10 20 30
Kilometres



Alberta
SUSTAINABLE RESOURCE
DEVELOPMENT
**Public Lands
& Forests**

Produced by Forest Health of The Public
Lands and Forests Division, 2004.

MOUNTAIN PINE BEETLE 1983



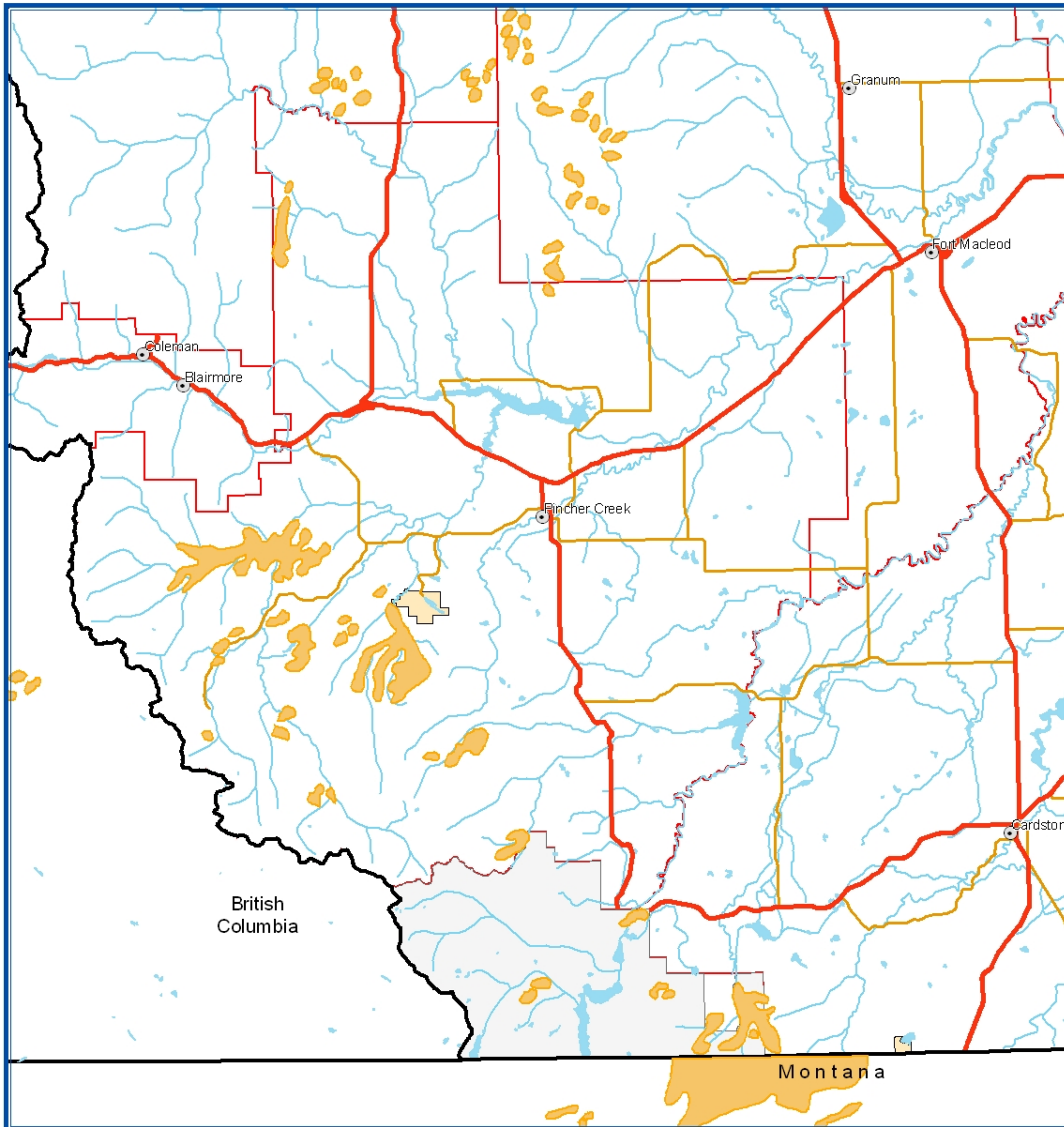
- MPB Infestation
- Primary Highways
- Secondary Highways
- Hydrography Lines
- Hydrography Polygons
- National Park
- Provincial Park
- Cities
- Municipality



Alberta
SUSTAINABLE RESOURCE
DEVELOPMENT
**Public Lands
& Forests**

Produced by Forest Health of The Public
Lands and Forests Division, 2004.

MOUNTAIN PINE BEETLE 1984



- MPB Infestation
- Primary Highways
- Secondary Highways
- Hydrography Lines
- Hydrography Polygons
- National Park
- Provincial Park
- Cities
- Municipality

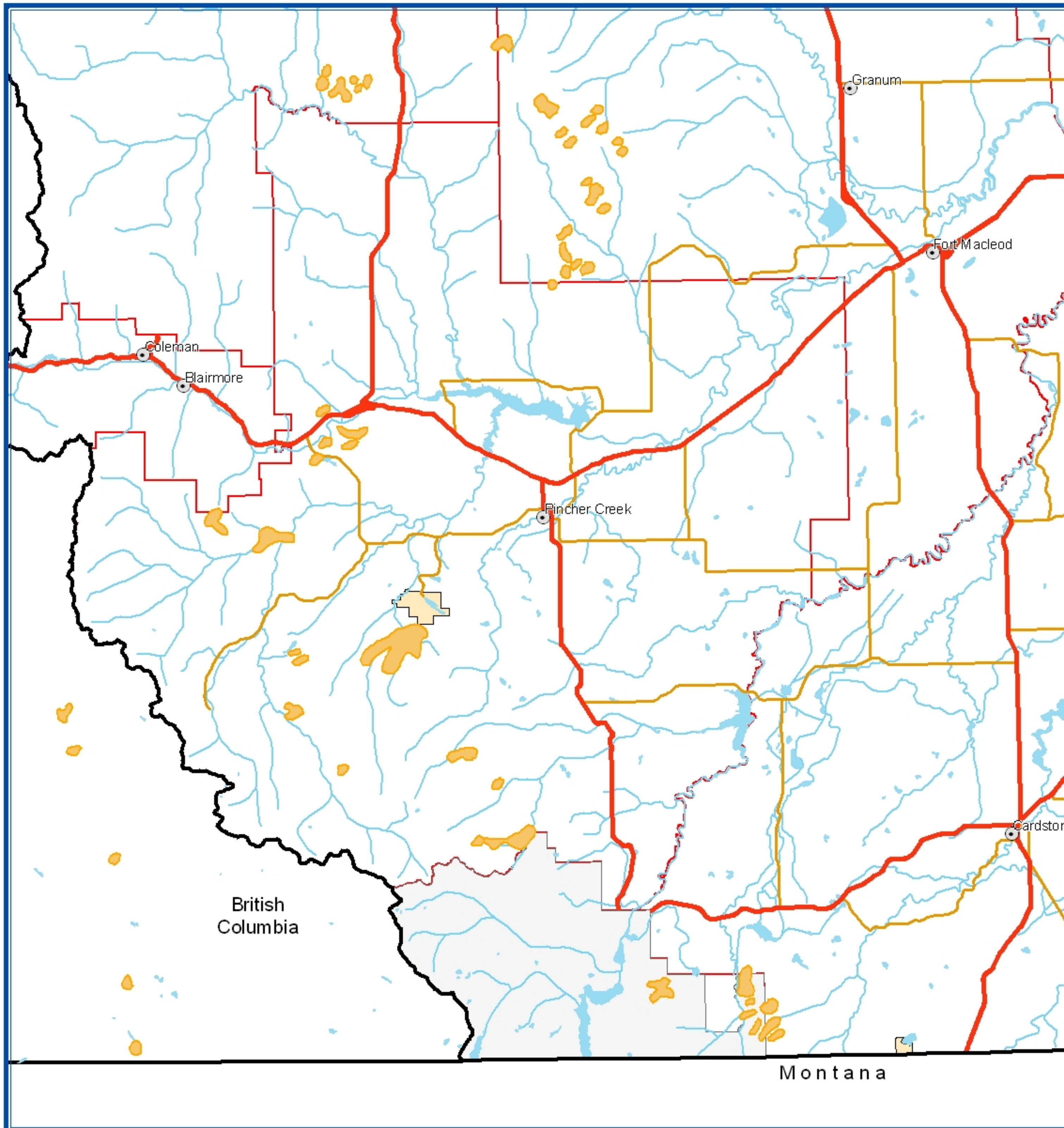
0 5 10 20 30
Kilometres



Alberta
SUSTAINABLE RESOURCE
DEVELOPMENT
**Public Lands
& Forests**

Produced by Forest Health of The Public
Lands and Forests Division, 2004.

MOUNTAIN PINE BEETLE 1985



- MPB Infestation
- Primary Highways
- Secondary Highways
- Hydrography Lines
- Hydrography Polygons
- National Park
- Provincial Park
- Cities
- Municipality

0 5 10 20 30
Kilometres



Alberta
SUSTAINABLE RESOURCE
DEVELOPMENT
**Public Lands
& Forests**

Produced by Forest Health of The Public
Lands and Forests Division, 2004.