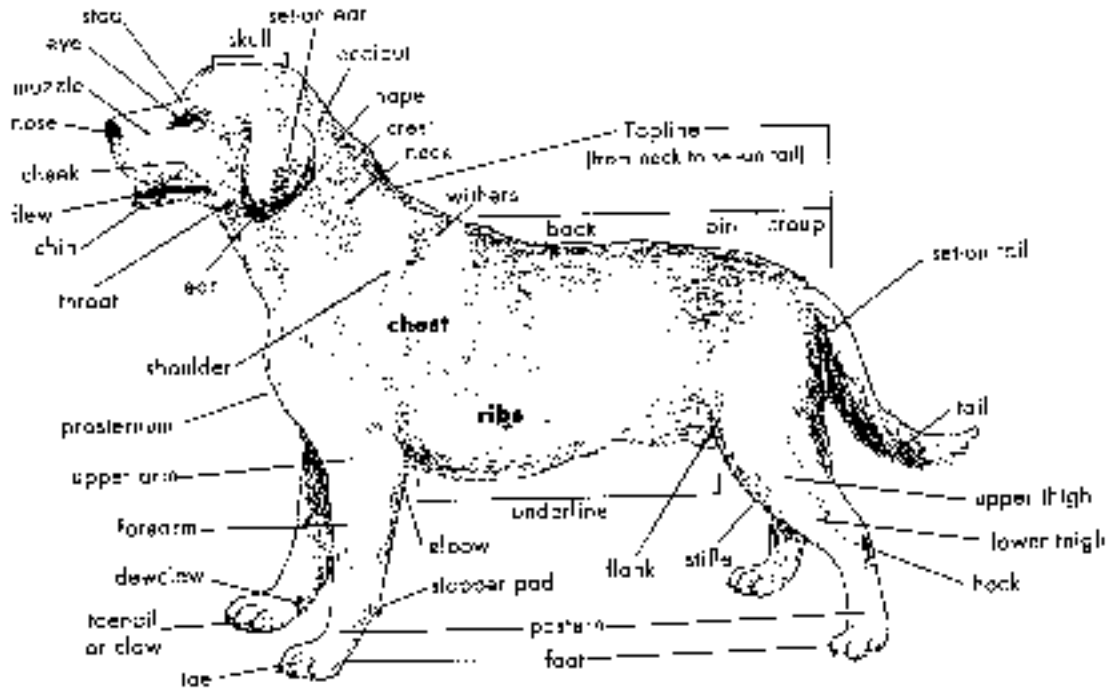


Judging Canine

Parts of the Canine



Parts of a Dog

Canine Scorecard

Perfect Score

Head	24
• Bite – should be able to tell the difference between level, scissors, overshot and undershot	
Body, feet and legs	24
• Neck	
• Shoulder angulation	
• Prosternum depth of chest	
• Width of chest between front legs	
• Topline	
• Group	
• Rear angulation (stifle and hock)	
• Check male for testicles	
Movement.....	22
• Well knuckled feet	
• Should recognize paddling	
• Weaving and crossing over	
• Moving too wide or too close	
• Cowhocks, crabbing and side winding.	
General Properties.....	30
• Expression - overall appearance of dog's head with special consideration given to the look in his eye (friendly, wary, etc.)	
Total	100

Source: Nova Scotia Agriculture & Fisheries – Nova Scotia 4-H - Spotlight on Judging