

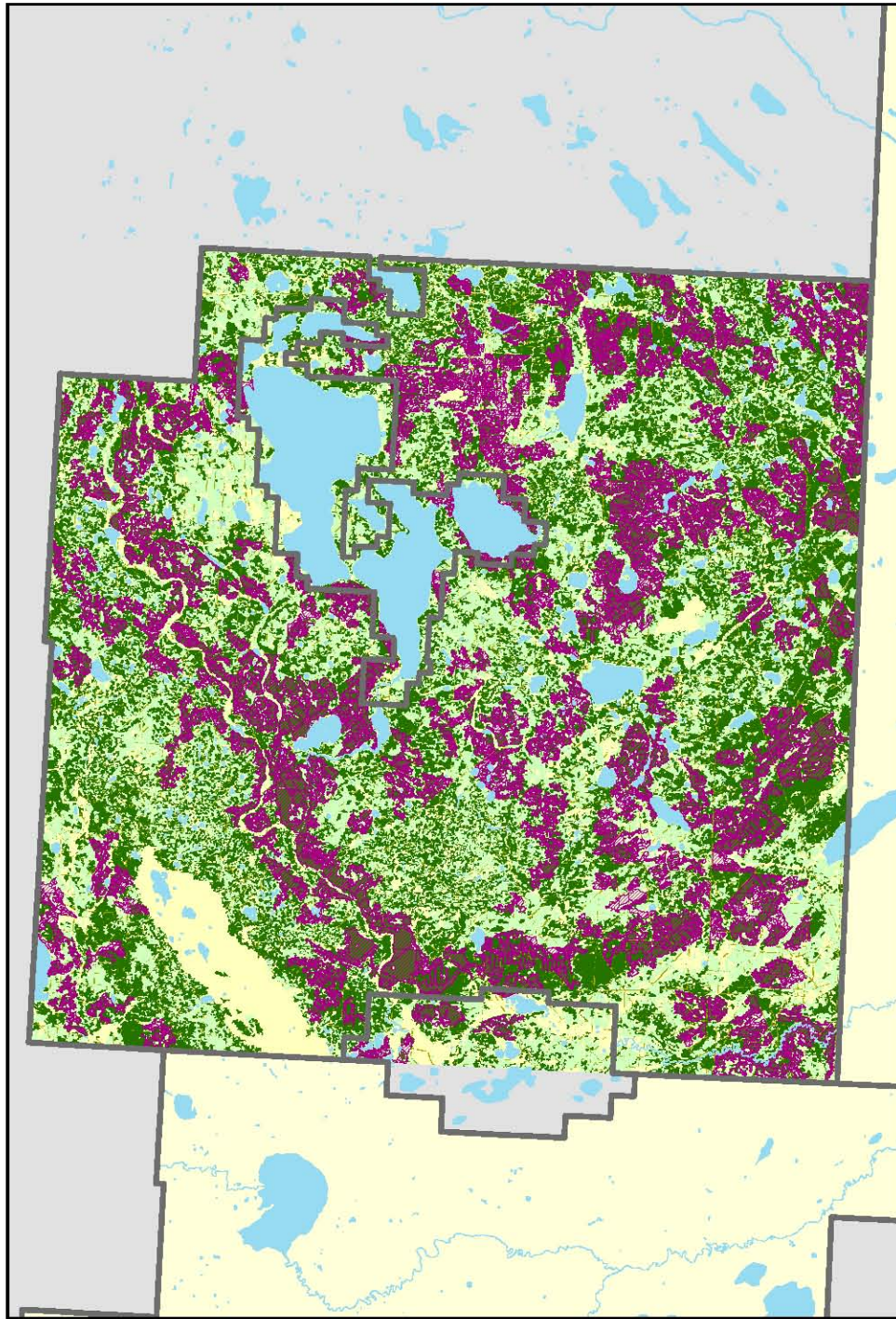
Old Interior Forest

FMU S11

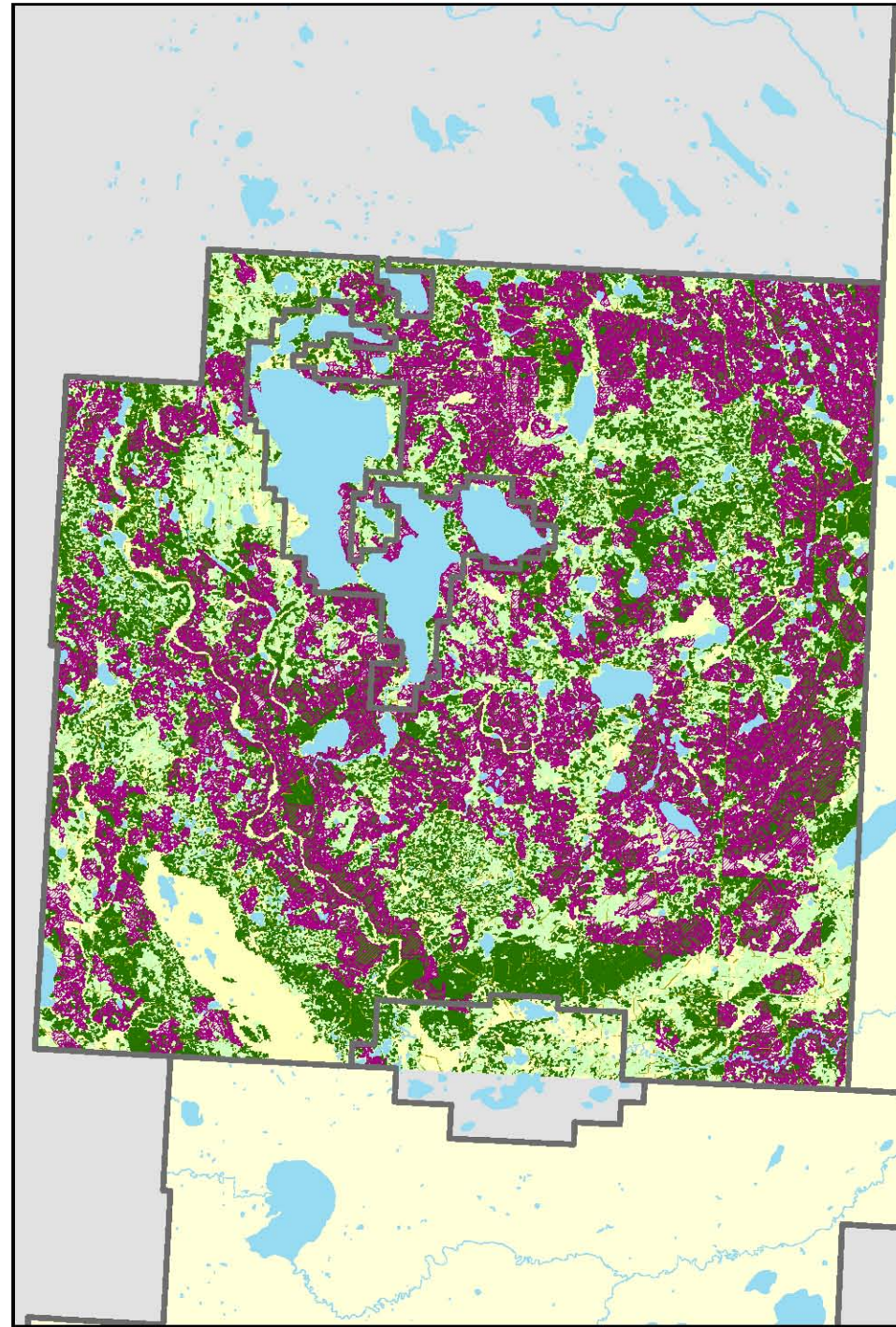
- Interior Core Definition:**
- o Sixty meters or more away from a non-forest edge,
 - o Thirty meters or more away from a non-interior forest edge ("A" density stands, young and immature seral stages),
 - o Greater than thirty percent crown closure (AVI density classes B, C, D),
 - o Greater than two meters in stand height,
 - o Older than established or immature seral stages; and,
 - o At least 100 hectares in size.



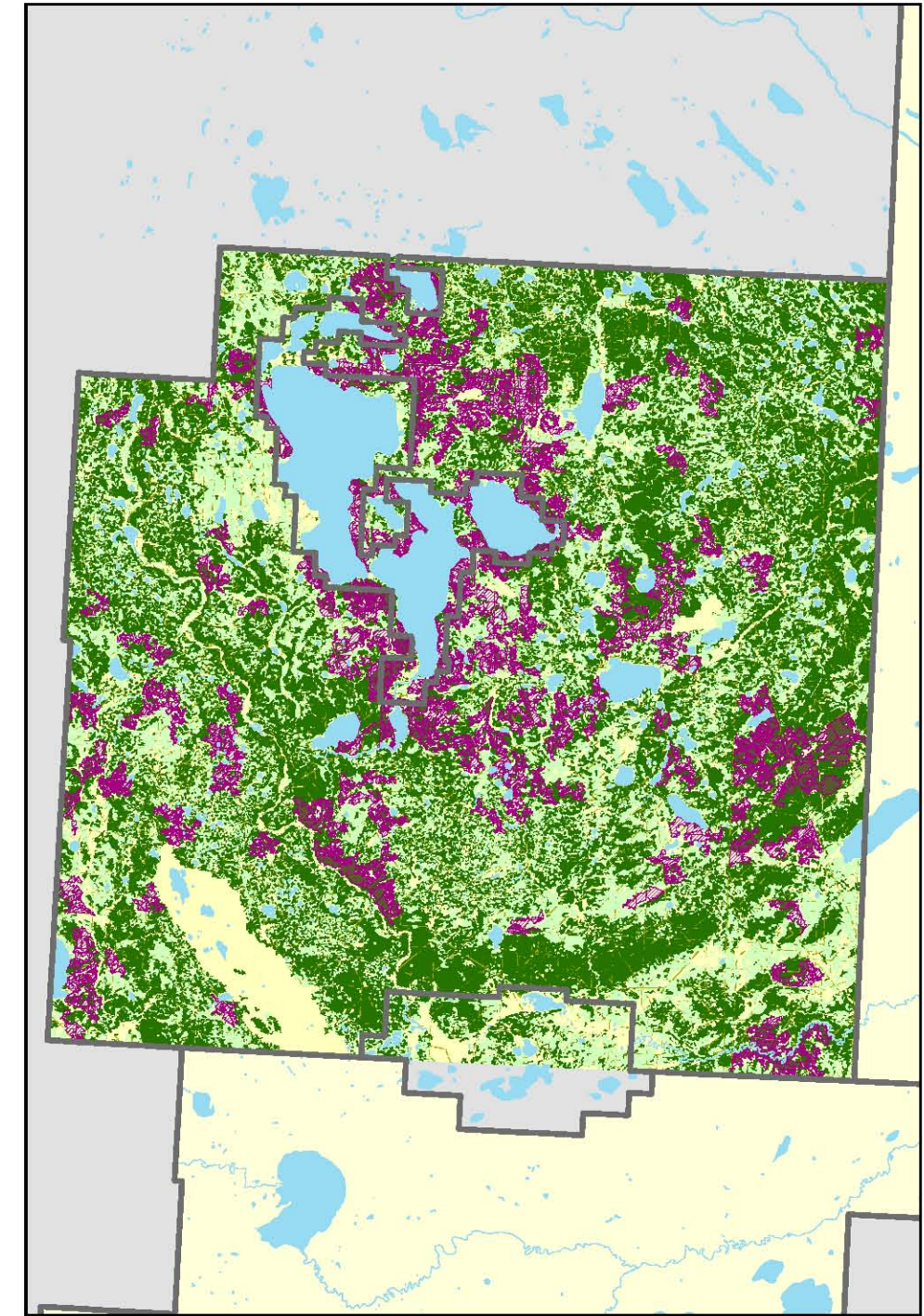
Year 2006



Year 2016



Year 2056



Interior Core and Net Strata

- | | |
|---|---|
|  Mature/ Old Interior Core |  Oil and Gas |
|  Non Forested |  Forested, Managed |
|  Forested, Unmanaged | |

Base Information

- | |
|--|
|  Lakes/ Rivers |
|  Forest Management Unit |

