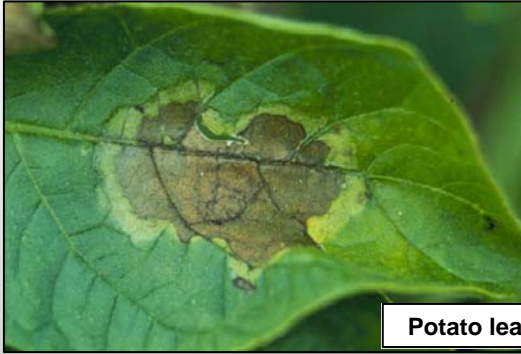


# LATE BLIGHT OF POTATO & TOMATO

Lesions may have a yellow edge



Potato leaf lesions

In humid conditions, fluffy white growth may be visible on leaf undersides at lesion edges



Photo by Dr. K. Al-Mughrabi, Govt of NB



Photo by Dr. K. Al-Mughrabi, Govt of NB

Dark, water-soaked lesions (spot)

Lesions are not contained by leaf veins

Lesions become brown & brittle within a couple of days



Lesions on tomato leaves



Photo by Dr. K. Al-Mughrabi, Govt of NB

Rapidly advancing lesions

Plant foliage may die back rapidly

Disease develops rapidly under warm & wet/humid conditions

Lesions may also develop on stems, tomato fruit or potato tubers



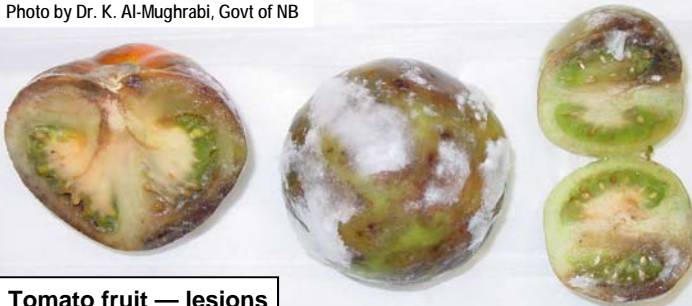
Potato foliage

Tomato fruit & potato tuber rot may have reddish-brown lesions

Disease may spread from diseased to healthy tomato fruit & potato tubers in storage & between potato seed pieces

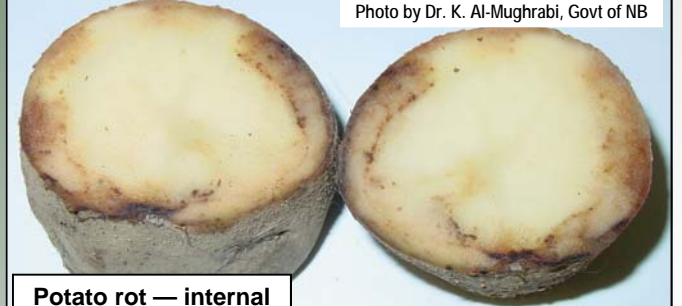
Rot can penetrate the skins of tomato fruit & tubers — causes rot & discoloration of the internal flesh

Photo by Dr. K. Al-Mughrabi, Govt of NB



Tomato fruit — lesions

Photo by Dr. K. Al-Mughrabi, Govt of NB



Potato rot — internal