

Alberta 2012 Greenfeed and Silage Production Survey Results

Purpose of Survey

Greenfeed and silage production statistics for Alberta are not available from Statistics Canada or any other source, despite the fact that producers in the province harvest significant acreages of annual crops for greenfeed and silage every year. To fill this data gap and to meet client needs, the Statistics and Data Development Branch of Alberta Agriculture and Rural Development (ARD) initiated a greenfeed and silage production survey in 2002. Since then, the survey has been conducted annually, to develop selected statistics for the forage industry.

As in previous years, the 2012 survey was conducted in partnership with Agricultural Fieldmen and Agriculture Financial Services Corporation. The survey collected data on greenfeed and silage acreage, yields and production at the municipal level. The information was then used, along with input from ARD specialists, to develop provincial estimates. Just to note, the yield and production estimates in this report are on a wet weight basis.

Alberta 2012 Greenfeed and Silage Production

Overall, crop growing conditions in the province in 2012 were mainly favourable. Producers were off to a slow start across the province given a wet cool May, but the remainder of the season was hot and dry with occasional precipitation. Provincial average yields for major crops were lower than in 2011, but still above their respective 10-year averages. Also, there was some crop damage due to adverse weather and disease.

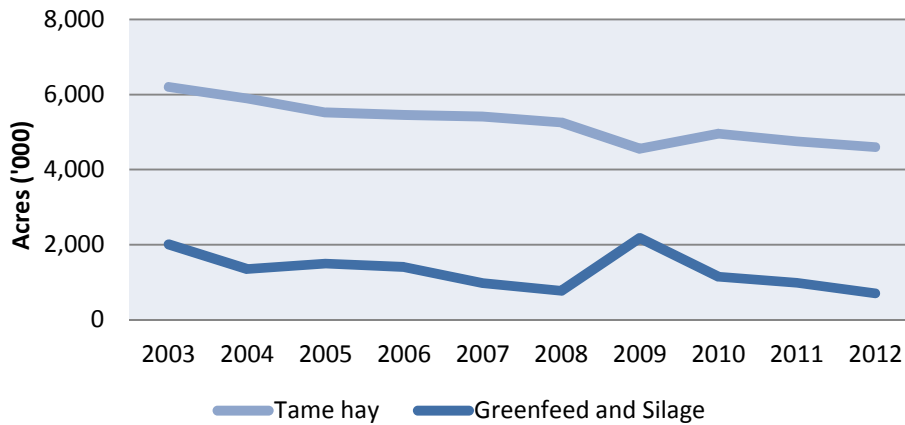
Total tame hay production in Alberta in 2012 was estimated at 7.71 million tonnes, based on the Statistics Canada report “Production of Principal Field Crops, November, 2012”. This was down three per cent from 2011, but six per cent above the 10-year average. The lower production was due to a decline in seeded and harvested area (Figure 1). However, provincial average yield was 1.8 tons per acre, 21 per cent above the 10-year average and at par with last year.

In 2012, Alberta producers seeded an estimated total of 18.4 million acres to spring wheat, durum, barley, oats, mixed grains, triticale, canola and dry peas (see Table 1). Of the total seeded area, 96 per cent was harvested as grains and oilseeds and four per cent

as greenfeed and silage. The percentage of crop area harvested for grains and oilseeds, greenfeed and silage was lower than in 2011. Producers seeded less greenfeed and silage acres mainly because provincial cattle numbers declined in recent years, and grain and oilseeds prices were near record highs.

Total area harvested for greenfeed and silage in 2012 was estimated at 707,000 acres, down 28 per cent from 2011 (Figure 1). Total area harvested for greenfeed declined 26 per cent from 2011, to 307,000 acres, while silage acreage decreased by 30 per cent to 400,000 acres.

Figure 1. Total Harvested Tame Hay and Greenfeed/Silage Area (2003 - 2012)



Source: Alberta Agriculture and Rural Development

Producers reported lower yields for greenfeed and silage than originally anticipated, due to diseases, shallow rooted crops and the impact of heat stress in July and August. The estimated provincial average yield for greenfeed was 2.85 tonnes per acre. This was ten per cent lower than in 2011. The provincial average yield for greenfeed barley was 2.75 tonnes per acre (12 per cent down from 2011), and 3.09 tonnes per acre for greenfeed oats (two per cent decrease from 2011). For silage, the provincial average yield was estimated at 6.58 tonnes per acre, down two per cent from 2011. The reduction in silage yield was largely attributed to a decline in oat and mixed grain silage yields, compared to 2011. Mixed grain silage was down 12 per cent to 6.96 tonnes per acre and oat silage decreased 11 per cent to 6.49 tonnes per acre. The yield for triticale silage increased 19 per cent to 6.87 tonnes per acre. Barley silage yields were up three percent to 6.60 tonnes per acre.

As a result of lower yields and harvested area, total greenfeed production declined 39 per cent from 2011, to 793,000 million tonnes. The production for greenfeed barley was 274,000 tonnes, (42 per cent below 2011) and 406,000 tonnes for greenfeed oats (down 39 per cent from 2011). For silage total production was estimated at 2.5 million tonnes,

down 36 per cent from 2011, due to generally lower yields and harvested area. The production for barley silage was 1.7 million tonnes, 31 per cent lower than in 2011. Oats for silage production totaled to 442,000 tonnes, 47 per cent decrease from 2011.

In 2012, barley and oats were the major crops harvested for greenfeed and silage, although significant acreage of mixed grains and some spring wheat and triticale were also taken off. For greenfeed production, barley accounted for 35 per cent of the provincial total, while oats represented 51 per cent. Mixed grains and triticale accounted for 11 per cent and two per cent, respectively. The remaining less than one per cent was from spring wheat. In terms of silage production, 70 per cent of the provincial total came from barley, 18 per cent from oats, and eight per cent from mixed grains. Triticale represented four per cent of total silage production.

Estimates of greenfeed and silage production in Alberta for previous years, dating back to 2003, are also shown in Table 1.

For further information on the survey results, please contact:

Lukas Matejovsky, Crop Statistician
Alberta Agriculture and Rural Development
Economics and Competitiveness Division
Statistics and Data Development Branch
Telephone: 780-422-2887
Fax: 780-427-5220
Email: lukas.matejovsky@gov.ab.ca

Table 1: Alberta Greenfeed and Silage Production

	Total Seeded Area	Harvested Greenfeed Area	Harvested Silage Area	Average Greenfeed Yield	Average Silage Yield	Total Greenfeed Production	Total Silage Production
	('000 acres)			(tonnes/acre)		('000 tonnes)	
2012 Spring Wheat	5,800	7	3	1.00	1.43	6	4
Durum	580	0	0	-	-	0	0
Barley	3,770	110	290	2.75	6.60	274	1,736
Oats	640	145	75	3.09	6.49	406	442
Mixed Grains	80	40	30	2.56	6.96	93	190
Triticale	25	5	2	2.89	6.87	13	93
Other Crops*	7,460	0	0	-	-	0	0
Total	18,355	307	400	2.85	6.58	793	2,465
2011r Spring Wheat	5,972	2	0	2.09	0.00	4	0
Durum	536	0	0	-	-	0	0
Barley	3,610	150	390	3.13	6.40	469	2,498
Oats	892	210	115	3.15	7.28	661	838
Mixed Grains	202	45	55	3.38	7.91	152	435
Triticale	41	5	15	2.91	5.78	15	87
Other Crops*	6,778	0	0	-	-	0	0
Total	18,030	412	575	3.16	6.71	1,302	3,857
2010r Spring Wheat	6,020	50	5	2.51	6.27	126	31
Durum	360	0	0	-	-	0	0
Barley	3,730	195	380	3.04	6.74	593	2,561
Oats	940	245	120	2.99	6.94	733	833
Mixed Grains	180	80	55	3.38	7.91	271	435
Triticale	40	5	10	2.96	7.56	15	76
Other Crops*	6,485	0	0	-	-	0	0
Total	17,755	575	570	3.02	6.91	1,737	3,936
2009r Spring Wheat	5,875	205	75	1.05	3.06	216	229
Durum	930	20	-	0.91	-	18	-
Barley	3,960	370	455	2.28	4.38	843	1,994
Oats	845	350	130	1.96	3.76	686	488
Mixed Grains	200	100	50	1.93	4.55	193	227
Triticale	45	15	10	1.69	4.54	25	45
Other Crops*	5,800	175	225	0.97	2.12	169	476
Total	17,655	1,235	945	1.74	3.66	2,150	3,460
2008 Spring Wheat	5,700	-	8	-	4.31	-	34
Durum	930	-	-	-	-	-	-
Barley	4,150	115	255	2.77	6.11	318	1,557
Oats	850	170	120	2.49	5.53	424	664
Mixed Grains	130	42	40	2.63	6.49	110	259
Triticale	35	8	10	2.8	6.67	22	67
Other Crops*	5,910	-	2	-	-	-	-
Total	17,705	335	435	2.61	5.93	875	2,582

* Other crops include canola and dry peas - Not available r - Revised Totals may not add up due to rounding

Note: Yields and production are reported on a wet weight basis.

Source: Statistics Canada and Alberta Agriculture and Rural Development

Table 1 (Cont'd): Alberta Greenfeed and Silage Production

	Total Seeded Area	Harvested Greenfeed Area	Harvested Silage Area	Average Greenfeed Yield	Average Silage Yield	Total Greenfeed Production	Total Silage Production
2007r Spring Wheat	4,877	2	8	-	5.67	-	45
Durum	765	-	-	-	-	-	-
Barley	4,850	180	340	2.49	5.72	449	1,943
Oats	1,050	190	125	2.45	5.4	465	675
Mixed Grains	160	50	55	2.54	5.67	127	312
Triticale	60	8	11	2.72	7.17	22	79
Other Crops*	5,645	-	11	-	4.09	-	45
Total	17,407	430	550	2.47	5.64	1,063	3,099
2006 Spring Wheat	5,769	15	35	1.81	3.63	27	127
Durum	571	-	-	-	-	-	-
Barley	4,095	185	465	2.72	6.12	503	2,847
Oats	1,269	275	150	2.49	5.44	686	816
Mixed Grains	373	100	85	2.77	6.03	277	513
Triticale	76	20	30	3.04	6.8	61	204
Other Crops*	5,087	5	35	2.2	4.34	11	152
Total	17,240	600	800	2.61	5.82	1,565	4,660
2005 Spring Wheat	5,587	25	40	2.5	4.9	63	196
Durum	860	5	-	1.8	-	9	-
Barley	4,225	185	455	3	7	555	3,185
Oats	1,250	290	235	3.15	7.15	914	1,680
Mixed Grains	220	110	75	3.15	7.15	347	536
Triticale	65	20	20	3.05	7.3	61	146
Other Crops*	4,855	5	35	2.4	4.46	12	156
Total	17,062	640	860	3.06	6.86	1,960	5,900
2004 Spring Wheat	5,285	25	10	2.5	2.6	63	26
Durum	875	-	-	-	-	-	-
Barley	4,720	245	340	3.3	7.2	809	2,448
Oats	1,450	285	220	3.35	6.9	955	1,518
Mixed Grains	210	55	105	3.4	7.1	187	746
Triticale	100	17	28	3.8	7.9	65	221
Other Crops*	4,615	8	12	2.88	3.42	23	41
Total	17,255	635	715	3.31	6.99	2,100	5,000
2003 Spring Wheat	5,158	90	20	1.27	3.63	114	73
Durum	1,025	5	-	0.91	-	5	-
Barley	5,300	380	500	2.18	4.99	827	2,495
Oats	1,600	470	270	2	4.63	938	1,249
Mixed Grains	250	80	130	2.04	4.54	163	590
Other Crops*	3,950	10	50	1	2.4	10	120
Total	17,283	1,035	970	1.99	4.67	2,058	4,526

* Other crops include canola and dry peas - Not available r - Revised Totals may not add up due to rounding

Note: Yields and production are reported on a wet weight basis.

Source: Statistics Canada and Alberta Agriculture and Rural Development