
Spatial Harvest Sequence Amendment

December 1, 2009



Original signed

Greg Neale - Woodlands Manager

Original signed

Bob Held – Timber Supply Analyst

Table of Contents

1	Introduction	1
2	SHS Development	1

List of Tables

Table 1	Land Base Attribute Changes.....	2
Table 2	Compartment Sequence	2
Table 3	SHS Harvest Summary by Operator	3

List of Figures

Figure 1	Spatial Harvest Sequence	4
----------	--------------------------------	---

1 INTRODUCTION

Sundre Forest Products (SFP) completed and submitted a Mountain Pine Beetle Action Plan for FMU R10 in April 2007 as an amendment to the approved 1996 Detailed Forest Management Plan. The amendment was approved on January 24, 2008. Upon implementation of the spatial harvest sequence (SHS), it was found that, in some cases, the variances between the plan and the operations exceeded acceptable tolerances. SFP in consultation with SRD Staff recommended that the SHS be revised to ensure that the SHS can be implemented within tolerances.

SFP is planning to submit an amended MPB plan in May 2011. However, it was deemed necessary that an interim SHS be developed to bridge the gap between 2009 and 2011.

This document outlines the information and process used to develop an amended SHS that will be operationalized in a ten year period starting in 2009. The intent is to ensure that the SHS will meet the harvest requirements from 2009 to the approval of the amended MPB Action Plan submitted and approved in May 2011.

The current AACs for the FMU is 1,410,825 m³ at a utilization of 15/11+/30cm. Table 3 provides the AAC's for the operators within the FMU.

This document, along with associated maps and analytical output are provided on the enclosed digital media.

2 SHS DEVELOPMENT

Operators within FMU R10 have developed compartment sequences and block plans that will be operationalized between 2009 and the approval of the amended MPB Action Plan in May 2011.

Harvest plans have been developed for each of the compartments and are used in development of the SHS. Table 2 provides a list of the compartments and the status of the harvest plan approvals.

The harvest plans were intersected with the currently approved land base² used in the 2007 amendment³. Not all blocks are designated for harvest for the duration of this SHS. Therefore, only those blocks targeted constitute the SHS. Appendix 1 and 2 provide detailed summaries for the compartments and blocks, respectively.

In some instances, passive land base, originally defined in land base classification, exists within the block boundaries. These areas are redefined as active (LBDeletion Code 99). Approximately 9% of the SHS area is redefined from passive to active.

The land base classification process redefined ages, age classes, land base classes (deciduous/coniferous), land base status (standing ST and regenerating RT) and cover groups. These attributes were reset to the original AVI definition as the polygons are not assumed to be deleted or harvested. Table 1 provides a summary of these changes. Figure 1 provides a map of the SHS.

¹ Mountain Pine Beetle Pine Strategy Plan, Forest Management Unit R10, Approval Decision, January 24, 2008

² Mountain Pine Beetle Action Plan – Land Base Classification January 15, 2007

³ Mountain Pine Beetle Action Plan September 10, 2007

Table 1 Land Base Attribute Changes

Attribute	Area Change	% of Total
Age	1,227.3	4.3%
AgeClass	1,227.1	4.3%
Landbase	2,498.0	8.8%
Status	842.0	3.0%
Covergroup	481.0	1.7%

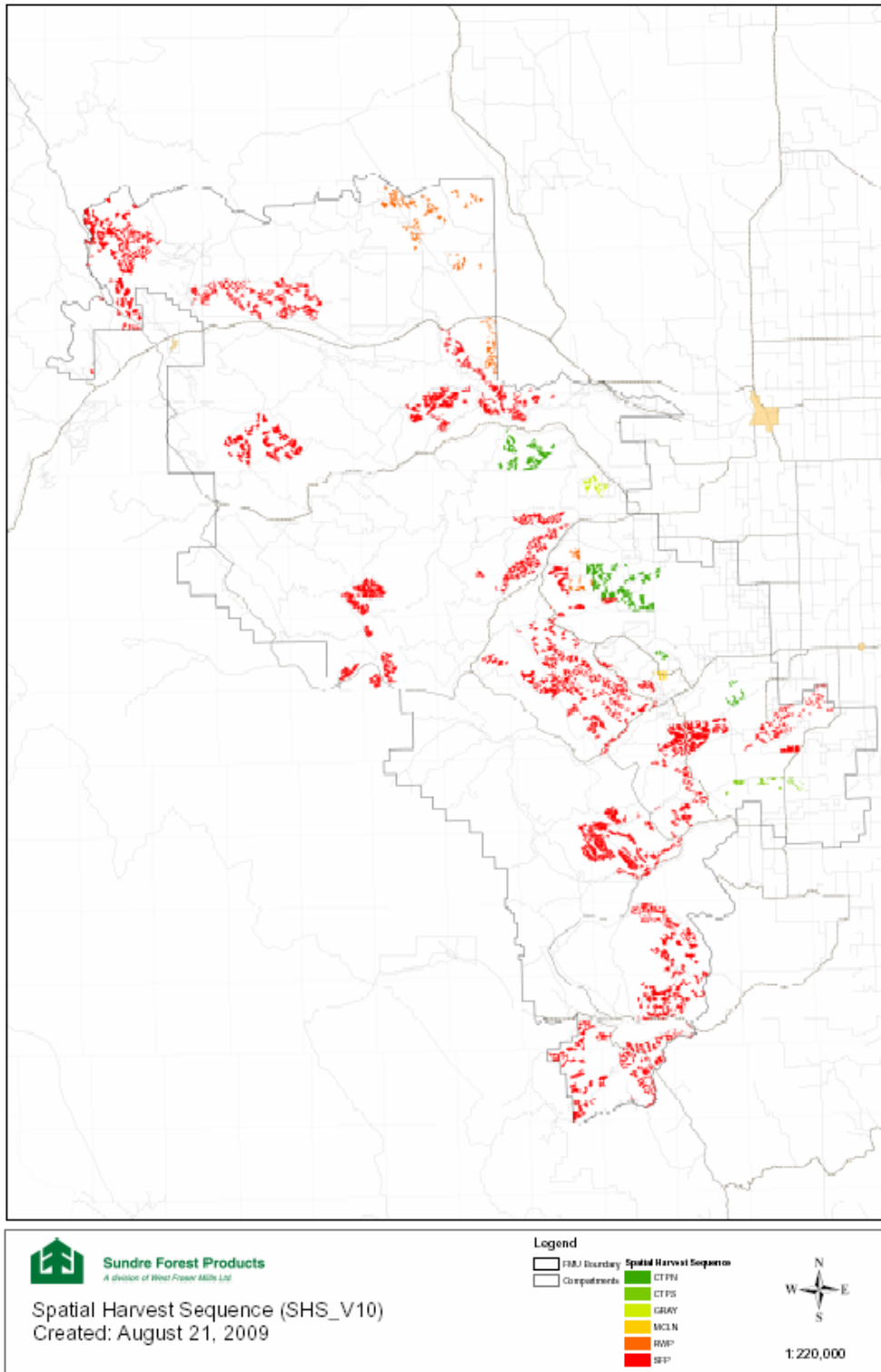
Table 2 Compartment Sequence

Compartment Name	Operator	Planning Stage	Approval Date
Bluehill	SFP	Preliminary Harvest Plan	Pending
Burnt Timber Creek	SFP	Final Harvest Plan	Pending
CTRL020033	RWP	Preliminary Harvest Plan	Approved
CTRL020034	RWP	Preliminary Harvest Plan	Approved
CTRL020040	RWP	Preliminary Harvest Plan	Approved
CTRL020044	RWP	Preliminary Harvest Plan	Approved
CTRL070055	RWP	Preliminary Harvest Plan	Approved
CTRL070059	RWP	Preliminary Harvest Plan	Approved
CTRL100001	RWP	Preliminary Harvest Plan	Approved
CTRL100003	RWP	Preliminary Harvest Plan	Approved
CTRL10050B	RWP	Preliminary Harvest Plan	Approved
Elk Creek	SFP	Preliminary Harvest Plan	December 15, 2008
Gap Creek	SFP	Final Harvest Plan	August 7, 2008
Harlech	SFP	Preliminary Harvest Plan	Pending
Haven Creek	SFP	Final Harvest Plan	August 7, 2008
James River	SFP	Preliminary Harvest Plan/Final Harvest Plan Amendment Pending	November 21, 2007
Jock Lake	SFP	Preliminary Harvest Plan/Final Harvest Plan Amendment Pending	August 7, 2008
Lewis Creek	SFP	Preliminary Harvest Plan	Pending
Lick Creek	SFP	Final Harvest Plan	April 5, 2007
North Horburg	SFP	Preliminary Harvest Plan/Final Harvest Plan Amendment Pending	September 18, 2000
Prairie Creek	SFP	Preliminary Harvest Plan	Pending
Raven River	SFP	Final Harvest Plan	February 9, 2006
Red Deer River	SFP	Preliminary Harvest Plan/Final Harvest Plan Amendment Pending	July 28, 2008
South Burnstick Lake	SFP	Preliminary Harvest Plan/Final Harvest Plan Amendment Pending	September 30, 2003
Stoney Creek	SFP	Final Harvest Plan	June 22, 2001
Swale Creek	SFP	Preliminary Harvest Plan/Final Harvest Plan Amendment Pending	August 7, 2008
Swan Creek	SFP	Final Harvest Plan	January 6, 2009
Tay River	SFP	Preliminary Harvest Plan	Pending
Teepee Creek	SFP	Final Harvest Plan	March 19, 2009
Upper Lick Creek	SFP	Final Harvest Plan	July 2, 2002
Upper Tay River	SFP	Final Harvest Plan	June 23, 2005
Williams Creek	SFP	Final Harvest Plan	Feb. 5, 2008
Bob Mclean Quota	Mclean	Preliminary Harvest Plan	Approved
CTPP North	CTPPN	Preliminary Harvest Plan	Approved
Gray Quota	Gray	Preliminary Harvest Plan	Approved
Lone Pine	LPFC	Preliminary Harvest Plan	Approved
Vanderleek and Opendries	VOIL	Preliminary Harvest Plan	Approved
Strachan Forest Products	SFPL	Preliminary Harvest Plan	Approved
Sundre CTPP	CTPPS	Preliminary Harvest Plan	Approved

Table 3 SHS Harvest Summary by Operator

Operator	Operator	AAC (m3) (15+/11/30cm)	Volume Allocated (m3) (15+/11/30cm)	Blocks	Area (ha)	Years Available
SFP	Sundre Forest Products	1,199,703	5,140,891	837	24,573	4.3
Sundre CTPP	Sundre CTPP	22,875	54,630	30	234	2.4
CTPN	North CTPP	28,150	133,775	30	610	4.8
CECH	Cech	672	-	-	-	-
GRAY	Gray	8,190	51,328	12	218	6.3
MCLN	Mclean	4,652	28,673	20	152	6.2
VOIL	Vanderleek/Opendries	16,275	91,249	9	351	5.6
LPFC	Lone Pine	21,000	194,579	19	725	9.3
SFPL	Strachan Forest Products	13,000	98,116	10	442	7.5
RWP	Rocky Wood Preservers	96,308	302,336	114	1,364	3.1
Total		1,410,825	6,095,577	1,081	28,669	4.3

Figure 1 Spatial Harvest Sequence



APPENDIX 1 COMPARTMENT INFORMATION

Compartment Information

PUID	Compartment Name	Operator	Planning Stage	Pass Available	Harvest Period	Number of Blocks	Area	Passive Area	Non Forested Area	Coniferous Volume	Deciduous Volume
C6	Bluehill	SFP	Preliminary Harvest Plan	2	1	54	1,125.6	103.4	29.3	215,566	14,694
C2	Bob Mclean Quota	MCLN	Preliminary Harvest Plan	2	1	14	85.9	11.1	3.8	12,764	6,420
C172	Burnt Timber Creek	SFP	Final Harvest Plan	2	1	60	1,235.2	268.9	20.3	263,039	14,609
C1506	CTLR020033	RWP	Preliminary Harvest Plan	2	1	15	281.4	16.7	9.9	63,103	6,117
C1501	CTLR020034	RWP	Preliminary Harvest Plan	2	1	34	304.0	13.4	6.0	59,435	7,127
C1502	CTLR020040	RWP	Preliminary Harvest Plan	2	1	21	239.8	8.5	3.0	56,578	3,683
C1503	CTLR020044	RWP	Preliminary Harvest Plan	1	1	10	125.9	5.6	1.7	25,283	5,237
C1551	CTLR070059	RWP	Preliminary Harvest Plan	1	1	6	108.2	8.5	6.2	29,561	1,276
C1520	CTLR100001	RWP	Preliminary Harvest Plan	2	1	12	122.4	7.1	3.5	25,328	3,771
C1550	CTLR100003	RWP	Preliminary Harvest Plan	2	1	6	78.3	3.7	3.5	20,115	957
C1521	CTLR10050B	RWP	Preliminary Harvest Plan	1	1	10	104.3	14.3	5.9	22,932	2,432
C16103	CTPP North	CTPC	Preliminary Harvest Plan	2	1	7	212.1	8.4	7.9	42,751.0	4,186.3
C16104	CTPP North	LPFC	Preliminary Harvest Plan	2	1	19	725.3	34.9	23.0	194,578.9	9,735.3
C16028	CTPP North	MCLN	Preliminary Harvest Plan	2	1	6	65.8	4.0	2.6	15,908.7	1,152.0
C16103	CTPP North	CTPN	Preliminary Harvest Plan	2	1	12	274.4	11.7	6.2	61,881.0	3,584.5
C16103	CTPP North	CTPS	Preliminary Harvest Plan	2	1	11	123.1	12.9	5.8	29,142.9	1,597.0
C16105	CTPP North	SFPL	Preliminary Harvest Plan	2	1	10	442.3	18.0	12.6	98,116.1	8,618.9
C16105	CTPP North	VOIL	Preliminary Harvest Plan	2	1	9	350.9	20.9	12.6	91,249.3	4,307.0
C16	Elk Creek	SFP	Preliminary Harvest Plan	1	1	20	1,702.6	129.8	11.5	298,149	19,261
C18	Gap Creek	SFP	Final Harvest Plan	1	1	22	1,033.8	123.2	11.9	240,527	12,325
C16029	Gray Quota	GRAY	Preliminary Harvest Plan	2	1	12	218.3	34.0	4.5	51,328	4,703
C177	Harlech	SFP	Preliminary Harvest Plan	1	1	71	1,670.3	116.6	25.5	351,684	23,017
C21	Haven Creek	SFP	Final Harvest Plan	1	1	17	495.3	35.8	6.9	109,743	6,310
C25	James River	SFP	Final Harvest Plan	1	1	37	1,035.4	98.2	22.7	224,441	22,101
C26	Jock Lake	SFP	Final Harvest Plan	1	1	8	214.6	31.4	1.2	48,293	2,482
C27	Lewis Creek	SFP	Preliminary Harvest Plan	1	1	17	1,049.3	35.2	23.9	177,892	12,711
C28	Lick Creek	SFP	Final Harvest Plan	3	1	13	380.8	15.3	11.5	76,416	5,913
C175	North Horburg	SFP	Final Harvest Plan	1	1	51	1,266.5	219.8	27.9	225,561	49,930
C40	Prairie Creek	SFP	Preliminary Harvest Plan	2	1	39	966.3	105.9	33.8	252,896	11,765
C53	Raven River	SFP	Final Harvest Plan	1	1	28	1,530.6	144.5	59.6	369,251	20,199
C54	Red Deer River	SFP	Final Harvest Plan	1	1	28	895.2	76.5	17.4	190,745	10,499
C34	South Burntstick Lake	SFP	Final Harvest Plan	1	1	72	812.7	64.5	29.6	151,425	40,478
C63	Stoney Creek	SFP	Final Harvest Plan	1	1	18	230.6	31.7	19.5	58,745	3,412
C16027	Sundre CTPP	Sundre CTPP	Preliminary Harvest Plan	1	1	30	233.7	6.5	5.7	54,630	2,981
C9	Swale Creek	SFP	Preliminary Harvest Plan	1	1	69	2,048.4	141.0	44.4	471,342	23,831
C64	Swan Creek	SFP	Final Harvest Plan	1	1	29	904.4	93.6	50.7	222,687	20,456
C67	Tay River	SFP	Preliminary Harvest Plan	2	1	100	2,729.6	220.8	85.7	580,542	70,719
C68	Teepee Creek	SFP	Final Harvest Plan	1	1	29	1,651.7	81.4	18.6	268,384	17,393
C73	Upper Lick Creek	SFP	Final Harvest Plan	2	1	5	60.8	13.5	9.0	15,006	699
C74	Upper Tay River	SFP	Final Harvest Plan	2	1	7	305.4	27.9	5.5	60,215	5,037
C77	Williams Creek	SFP	Final Harvest Plan	2	1	43	1,227.8	91.3	34.6	268,343	15,628

APPENDIX 2 BLOCK INFORMATION

Block Information

Compartment	Opening Number	Operator	Pass	Area	Passive Area	Non Forested Area	Average Age	Coniferous Volume	Deciduous Volume
CTLR020034	5110401279	RWP	2	17.0	0.1	0.1	84	2,340.7	158.9
CTLR020034	5110401316	RWP	2	13.5	2.3	0.3	106	2,743.8	157.6
CTLR020034	5110401324	RWP	2	7.8	0.1	0.1	103	1,457.2	106.5
CTLR020034	5110401346	RWP	2	21.4	0.4	0.3	115	4,165.0	274.7
CTLR020034	5110401372	RWP	2	0.8	0.0	0.0	86	98.1	7.9
CTLR020034	5110401374	RWP	2	4.6	0.0	0.0	116	844.5	56.2
CTLR020034	5110401377	RWP	2	7.1	0.2	0.0	115	1,356.6	83.4
CTLR020034	5110401392	RWP	2	1.8	0.0	0.0	86	228.2	18.1
CTLR020034	5110401395	RWP	2	12.6	0.4	0.4	116	2,331.1	148.4
CTLR020034	5110402433	RWP	2	19.1	0.9	0.1	117	3,294.1	860.9
CTLR020034	5110402438	RWP	2	31.9	0.9	0.6	114	7,839.0	374.5
CTLR020034	5110402460	RWP	2	19.3	0.2	0.2	117	4,021.3	242.8
CTLR020034	5110402466	RWP	2	10.6	0.8	0.1	117	2,576.1	124.6
CTLR020034	5110402478	RWP	2	4.2	0.5	0.3	104	933.4	47.0
CTLR020034	5110402488	RWP	2	1.8	0.6	0.1	106	238.5	133.5
CTLR020034	5110402493	RWP	2	8.0	0.2	0.2	124	2,069.1	95.8
CTLR020034	5110402534	RWP	2	9.6	0.1	0.1	91	1,493.1	285.0
CTLR020034	5110402536	RWP	2	1.6	-	-	86	273.1	16.1
CTLR020034	5110402538	RWP	2	2.4	0.0	-	91	340.7	132.7
CTLR020034	5110402571	RWP	2	3.4	0.2	0.2	106	549.3	143.3
CTLR020034	5110402574	RWP	2	26.8	0.6	0.6	106	5,745.6	430.1
CTLR020034	5110402594	RWP	2	3.7	0.0	0.0	106	738.5	42.1
CTLR020034	5110402599	RWP	2	5.0	0.3	0.3	72	537.4	126.2
CTLR020034	5110403657	RWP	2	13.7	0.6	0.6	120	3,160.6	308.6
CTLR020034	5110403691	RWP	2	13.8	0.1	0.1	105	1,178.4	1,481.1
CTLR020034	5110403699	RWP	2	1.5	-	-	116	237.5	171.1
CTLR020034	5110410131	RWP	2	7.7	0.3	0.2	116	1,909.2	94.1
CTLR020034	5110410134	RWP	2	5.1	0.8	0.1	115	1,130.6	59.7
CTLR020034	5110410154	RWP	2	5.8	1.6	0.2	112	1,365.9	66.3
CTLR020034	5110410163	RWP	2	3.1	0.1	0.1	116	614.7	36.1
CTLR020034	5110410171	RWP	2	1.4	0.4	0.4	116	215.2	150.7
CTLR020034	5110410182	RWP	2	6.1	0.0	0.0	116	1,105.9	332.9
CTLR020034	5110410191	RWP	2	1.5	-	-	116	258.0	39.6
CTLR020034	5110410292	RWP	2	10.6	0.7	0.2	125	2,045.1	321.1
CTLR020040	5110420715	RWP	2	4.7	0.7	0.7	115	1,176.8	57.0
CTLR020040	5110421757	RWP	2	28.5	1.1	0.3	114	6,465.8	331.1
CTLR020040	5110421795	RWP	2	8.7	0.5	-	116	2,014.2	102.5
CTLR020040	5110421796	RWP	2	4.8	0.0	0.0	116	1,200.0	56.7
CTLR020040	5110421967	RWP	2	11.8	0.7	-	120	2,941.6	139.1
CTLR020040	5110421973	RWP	2	22.2	0.5	0.0	115	5,329.4	258.3
CTLR020040	5110421997	RWP	2	11.5	-	-	116	2,721.0	135.6
CTLR020040	5110422024	RWP	2	15.9	0.1	0.1	116	3,923.8	235.9
CTLR020040	5110423025	RWP	2	9.7	-	-	116	2,421.6	114.4
CTLR020040	5110423062	RWP	2	16.6	0.8	0.8	111	3,950.4	186.6
CTLR020040	5120420153	RWP	2	11.0	0.2	0.2	110	2,264.6	444.1
CTLR020040	5120420188	RWP	2	4.4	-	-	106	702.9	191.7
CTLR020040	5120421199	RWP	2	14.5	0.5	0.5	116	3,617.2	170.9
CTLR020040	5120421216	RWP	2	6.7	-	-	116	1,668.8	78.8
CTLR020040	5120421242	RWP	2	35.8	2.3	0.1	116	8,143.6	714.2
CTLR020040	5120421245	RWP	1	12.9	0.3	0.2	116	3,218.2	152.1
CTLR020040	5120421284	RWP	2	3.5	0.1	0.0	115	858.0	40.9
CTLR020040	5120421288	RWP	2	3.4	0.0	0.0	113	806.2	39.4
CTLR020040	5120421290	RWP	2	2.5	0.1	0.1	116	612.6	29.1
CTLR020040	5120421452	RWP	2	5.3	0.6	0.0	116	1,259.3	139.2
CTLR020040	5120421461	RWP	1	5.5	-	-	116	1,282.3	65.2
CTLR020044	5110412594	RWP	2	5.9	0.8	0.3	114	863.6	589.6
CTLR020044	5110412678	RWP	2	18.8	0.8	0.3	129	3,942.6	429.8
CTLR020044	5110412725	RWP	1	3.8	0.4	0.0	123	957.0	45.5
CTLR020044	5110412738	RWP	1	15.0	0.9	-	118	3,493.4	407.9
CTLR020044	5110412868	RWP	1	17.2	0.1	0.1	115	3,806.8	234.2
CTLR020044	5110412896	RWP	1	22.0	1.6	0.8	114	5,113.9	360.5
CTLR020044	5110413338	RWP	1	4.9	-	-	116	882.2	137.2
CTLR020044	5110413380	RWP	1	14.2	0.3	0.3	128	2,571.1	680.6
CTLR020044	5110413388	RWP	1	8.1	0.4	-	116	1,230.5	564.1
CTLR020044	5110413454	RWP	1	16.0	0.2	-	116	2,422.3	1,787.4
CTLR020033	5120421438	RWP	2	0.7	0.2	0.0	115	184.5	9.2
CTLR020033	5120422209	RWP	2	51.2	1.6	0.5	116	11,417.1	1,682.0
CTLR020033	5120422279	RWP	2	41.1	4.1	3.9	104	8,254.2	1,285.3
CTLR020033	5120422329	RWP	2	15.4	0.7	0.7	111	3,249.8	608.2
CTLR020033	5120422397	RWP	2	11.1	0.2	0.1	116	2,775.8	135.7
CTLR020033	5120422612	RWP	2	3.5	0.2	0.2	112	808.1	74.1
CTLR020033	5120422655	RWP	2	20.0	2.7	0.4	104	4,277.7	240.0
CTLR020033	5120422670	RWP	2	31.1	1.6	0.9	116	7,330.7	656.6
CTLR020033	5120422758	RWP	2	14.3	0.4	0.4	116	3,449.9	258.4
CTLR020033	5120422773	RWP	2	26.1	0.8	0.2	116	6,369.3	317.1
CTLR020033	5120422777	RWP	2	13.1	0.5	0.5	114	3,168.0	156.6
CTLR020033	5120422779	RWP	2	23.1	2.0	1.4	102	4,883.4	265.3
CTLR020033	5120423414	RWP	2	15.3	0.9	0.3	116	3,675.4	192.4
CTLR020033	5120423472	RWP	2	8.5	0.5	0.5	109	1,991.6	101.6
CTLR020033	5120423501	RWP	2	6.9	0.4	-	95	1,267.8	134.7
CTLR100001	5110421298	RWP	2	5.3	0.5	0.1	114	1,072.5	174.7
CTLR100001	5110421942	RWP	2	21.3	1.9	1.0	110	4,285.0	773.1
CTLR100001	5120421276	RWP	2	1.4	0.0	0.0	116	348.0	16.5
CTLR100001	5120421311	RWP	2	7.5	0.7	0.4	115	1,550.7	107.8
CTLR100001	5120421341	RWP	2	4.8	0.4	0.2	113	1,035.2	201.4
CTLR100001	5120421346	RWP	2	9.2	0.8	0.8	104	2,038.1	97.5

Block Information

Compartment	Opening Number	Operator	Pass	Area	Passive Area	Non Forested Area	Average Age	Coniferous Volume	Deciduous Volume
CTLR100001	5120421364	RWP	2	10.9	0.3	0.2	115	2,426.5	127.1
CTLR100001	5120421366	RWP	2	2.0	0.0	0.0	111	467.9	23.2
CTLR100001	5120421371	RWP	2	10.3	0.8	0.2	111	2,121.0	370.4
CTLR100001	5120422457	RWP	2	8.4	0.1	0.0	113	1,204.2	531.1
CTLR100001	5120422531	RWP	2	32.5	1.0	0.4	114	7,101.6	830.1
CTLR100001	5120423016	RWP	2	8.9	0.6	0.2	118	1,677.0	517.9
CTLR10050B	5110422268	RWP	1	21.1	4.8	3.6	116	4,657.3	248.7
CTLR10050B	5110422610	RWP	1	6.0	1.3	0.1	127	1,388.5	69.8
CTLR10050B	5110422635	RWP	1	12.6	1.6	0.3	120	2,996.7	147.7
CTLR10050B	5110422636	RWP	1	0.8	0.2	-	133	204.3	9.7
CTLR10050B	5110422652	RWP	1	10.4	0.8	0.1	117	2,518.9	122.4
CTLR10050B	5110422655	RWP	1	3.5	0.5	0.1	114	648.8	40.8
CTLR10050B	5110422693	RWP	1	19.1	1.5	1.0	114	3,862.5	801.1
CTLR10050B	5110422717	RWP	1	7.2	1.1	0.5	117	1,599.0	160.6
CTLR10050B	5110422868	RWP	1	7.1	2.7	0.2	120	1,524.6	81.4
CTLR10050B	5110423390	RWP	1	16.5	0.1	0.1	116	3,531.3	749.8
CTLR100003	5100372549	RWP	2	17.7	0.8	0.6	128	4,109.4	210.7
CTLR100003	5100372557	RWP	2	4.6	0.4	0.4	124	938.3	51.5
CTLR100003	5100372586	RWP	2	24.3	0.8	0.8	127	6,813.4	319.9
CTLR100003	5100372598	RWP	2	27.1	1.7	1.6	125	7,133.9	323.4
CTLR100003	5100373663	RWP	2	3.5	0.0	0.0	112	872.8	39.8
CTLR100003	5100373682	RWP	2	1.0	0.0	0.0	114	247.3	11.2
CTLR070059	5090371820	RWP	1	23.2	2.3	2.3	125	6,340.1	269.3
CTLR070059	5090371894	RWP	1	19.6	0.7	0.7	117	5,135.4	229.1
CTLR070059	5100371288	RWP	2	21.4	1.7	1.1	120	5,662.4	252.6
CTLR070059	5100371320	RWP	2	21.9	2.2	0.6	138	6,429.2	267.4
CTLR070059	5100371326	RWP	2	9.1	0.2	0.2	140	2,545.2	111.1
CTLR070059	5100371399	RWP	2	13.0	1.3	1.3	122	3,448.9	146.5
Elk Creek	5120360429	SFP	1	123.4	4.5	0.7	109	22,147.4	1,397.9
Elk Creek	5120360516	SFP	1	152.0	3.0	0.8	111	25,813.6	1,703.2
Elk Creek	5120360966	SFP	1	43.1	0.3	0.3	145	10,679.5	528.8
Elk Creek	5120361608	SFP	1	46.8	4.6	0.4	106	8,180.0	524.7
Elk Creek	5120361613	SFP	1	111.6	2.0	1.1	123	22,859.3	1,313.0
Elk Creek	5120363055	SFP	1	82.7	4.9	1.3	110	13,652.3	941.6
Elk Creek	5120370615	SFP	1	87.2	4.7	0.2	106	14,964.6	991.8
Elk Creek	5120370656	SFP	1	27.3	2.2	1.0	100	3,893.4	296.2
Elk Creek	5120370799	SFP	1	108.7	7.1	0.1	105	19,549.6	1,227.5
Elk Creek	5120370859	SFP	1	144.0	18.1	0.4	100	25,618.8	1,570.7
Elk Creek	5120371830	SFP	1	78.5	3.6	0.5	98	13,238.9	848.6
Elk Creek	5120371852	SFP	1	179.2	23.1	0.9	104	32,578.9	2,131.3
Elk Creek	5120371897	SFP	1	61.3	6.3	1.0	106	10,490.9	699.6
Elk Creek	5130361185	SFP	1	203.4	8.2	1.8	102	33,025.5	2,232.6
Elk Creek	5130370177	SFP	1	24.8	3.3	0.1	106	3,918.4	281.8
Elk Creek	5130371198	SFP	1	56.1	3.8	0.0	103	8,264.2	623.1
Elk Creek	5130371214	SFP	1	140.7	20.4	0.8	108	23,627.2	1,593.7
Elk Creek	5130371223	SFP	1	7.7	7.7	0.0	106	1,380.4	87.7
Elk Creek	5130371278	SFP	1	12.6	0.4	0.2	100	2,204.4	137.2
Elk Creek	5130371333	SFP	1	11.4	1.7	0.2	106	2,062.0	130.3
Sundre CTPP	5070341329	CTPU	2	3.2	0.0	0.0	116	784.3	58.4
Sundre CTPP	5070341349	CTPU	2	2.5	0.0	0.0	116	592.4	52.7
Sundre CTPP	5070341388	CTPU	2	2.0	0.0	0.0	116	489.2	23.0
Sundre CTPP	5070341927	CTPU	2	24.0	1.1	0.5	116	5,767.5	281.7
Sundre CTPP	5070341946	CTPU	2	39.0	2.4	2.4	110	9,257.4	438.8
Sundre CTPP	5070342118	CTPU	2	14.7	0.0	0.0	116	3,657.8	172.8
Sundre CTPP	5070342125	CTPU	2	28.6	0.6	0.6	114	6,935.5	333.7
Sundre CTPP	5070342137	CTPU	2	6.3	0.2	0.2	114	1,542.1	72.8
Sundre CTPP	5070342164	CTPU	2	5.3	0.2	0.2	116	1,313.9	62.1
Sundre CTPP	5070342167	CTPU	2	3.1	0.0	0.0	110	745.3	35.2
Sundre CTPP	5070342168	CTPU	2	2.1	0.1	0.1	116	519.3	24.5
Sundre CTPP	5070342179	CTPU	2	2.2	0.0	0.0	116	540.6	25.5
Sundre CTPP	5070342219	CTPU	2	23.5	0.2	0.2	115	4,891.1	274.9
Sundre CTPP	5070342261	CTPU	2	7.2	0.2	0.2	114	1,780.5	84.1
Sundre CTPP	5070342299	CTPU	2	7.5	0.2	0.2	115	1,379.0	87.6
Sundre CTPP	5070342335	CTPU	2	3.3	0.1	0.1	116	820.4	38.8
Sundre CTPP	5070342336	CTPU	2	0.8	-	-	116	145.4	10.8
Sundre CTPP	5070342344	CTPU	2	3.4	0.0	0.0	107	778.7	37.3
Sundre CTPP	5070342346	CTPU	2	4.0	-	-	114	978.3	46.4
Sundre CTPP	5070342349	CTPU	2	5.0	0.3	0.1	107	1,049.5	56.5
Sundre CTPP	5070342358	CTPU	2	1.3	-	-	113	317.1	18.7
Sundre CTPP	5070342364	CTPU	2	7.6	0.2	0.2	109	1,762.2	84.1
Sundre CTPP	5070342367	CTPU	2	4.4	0.0	0.0	115	1,056.2	94.2
Sundre CTPP	5070342369	CTPU	2	3.2	0.3	0.2	110	704.2	89.5
Sundre CTPP	5070342383	CTPU	2	2.6	0.0	0.0	110	616.2	29.4
Sundre CTPP	5070342392	CTPU	2	3.8	0.1	0.1	113	913.9	43.4
Sundre CTPP	5070342411	CTPU	2	3.0	-	-	117	728.6	57.3
Sundre CTPP	5070342435	CTPU	2	1.1	-	-	118	177.9	128.8
Sundre CTPP	5070342453	CTPU	2	3.1	0.0	0.0	111	715.4	31.9
Sundre CTPP	5080341329A	CTPU	1	15.8	0.3	0.3	116	3,670.4	186.3
Bob Mclean Quota	5080360628	MCLN	2	6.8	0.2	0.2	126	996.6	506.5
Bob Mclean Quota	5080360633	MCLN	2	5.5	0.1	0.1	136	1,548.9	68.8
Bob Mclean Quota	5080360636	MCLN	2	5.3	0.0	0.0	136	803.7	363.9
Bob Mclean Quota	5080360644	MCLN	2	9.1	0.2	0.2	118	833.4	915.2
Bob Mclean Quota	5080360649	MCLN	2	4.6	0.8	0.8	103	998.0	46.2
Bob Mclean Quota	5080360664	MCLN	2	3.5	0.1	0.1	126	946.4	42.6
Bob Mclean Quota	5080360674	MCLN	2	7.5	7.4	0.0	124	1,976.7	94.9
Bob Mclean Quota	5080360675	MCLN	2	3.6	0.0	0.0	136	225.6	815.6

Block Information

Compartment	Opening Number	Operator	Pass	Area	Passive Area	Non Forested Area	Average Age	Coniferous Volume	Deciduous Volume
Bob Mclean Quota	5080360676	MCLN	2	5.4	0.1	0.1	136	1,519.2	67.5
Bob Mclean Quota	5080360677	MCLN	2	1.0	0.0	0.0	136	64.1	230.9
Bob Mclean Quota	5080360678	MCLN	2	16.2	1.7	1.7	88	775.8	2,501.9
Bob Mclean Quota	5080360697	MCLN	2	5.4	0.3	0.3	46	195.0	253.2
Bob Mclean Quota	5080360699	MCLN	2	6.9	0.2	0.2	118	1,258.8	80.3
Bob Mclean Quota	5090360178	MCLN	2	5.0	-	-	104	622.0	432.8
Gray Quota	5090382078	GRAY	1	6.8	0.2	0.2	116	1,697.0	88.5
Gray Quota	5090382086	GRAY	1	4.7	0.3	0.3	116	1,162.2	55.0
Gray Quota	5090382811	GRAY	1	5.3	5.3	0.4	104	716.8	337.9
Gray Quota	5090382833	GRAY	1	22.8	22.8	0.5	116	4,685.5	903.5
Gray Quota	5090382942	GRAY	1	26.3	1.4	0.3	116	6,027.4	657.2
Gray Quota	5090382982	GRAY	1	7.0	0.0	-	116	1,714.6	103.1
Gray Quota	5090382985	GRAY	1	19.4	1.2	0.2	111	4,337.0	283.7
Gray Quota	5090383057	GRAY	1	23.1	1.1	1.1	116	5,959.2	346.0
Gray Quota	5090383073	GRAY	1	36.9	0.2	0.2	116	9,223.0	938.2
Gray Quota	5090383076	GRAY	1	12.8	0.4	0.4	116	3,313.3	181.0
Gray Quota	5090383097	GRAY	1	24.6	1.0	1.0	116	6,146.0	290.4
Gray Quota	5090383230	GRAY	1	28.7	0.3	0.1	109	6,346.0	518.1
CTPP North	5080371921	CTPC	1	7.8	0.1	0.1	106	1,321.6	115.7
CTPP North	5080371923	CTPC	1	3.7	0.2	0.2	106	573.6	193.9
CTPP North	5080371952	CTPC	1	33.5	1.0	1.0	98	6,160.4	1,156.2
CTPP North	5090370102	VOIL	1	29.2	0.3	0.3	136	8,486.8	356.6
CTPP North	5090370109	VOIL	1	65.2	4.1	3.0	119	17,291.7	774.8
CTPP North	5090370173	VOIL	1	85.0	6.8	4.1	125	20,696.7	1,049.0
CTPP North	5090370185	VOIL	1	1.6	0.1	0.1	136	345.6	19.3
CTPP North	5090370227	VOIL	1	73.4	3.0	2.5	127	20,128.1	878.9
CTPP North	5090370251	VOIL	1	19.8	2.1	0.1	127	5,406.0	237.3
CTPP North	5090370339	VOIL	1	19.7	0.9	0.8	116	4,465.1	284.7
CTPP North	5090370367	VOIL	1	9.5	0.1	0.1	116	2,334.6	111.7
CTPP North	5090370819	LPFC	1	10.2	1.3	1.3	113	2,356.2	110.2
CTPP North	5090370874	LPFC	1	53.3	1.8	1.5	135	14,324.4	827.5
CTPP North	5090370918	LPFC	1	22.5	1.1	0.4	135	6,538.9	273.6
CTPP North	5090370953	LPFC	1	66.9	0.4	0.4	127	18,829.2	810.2
CTPP North	5090371057	LPFC	1	96.2	1.0	1.0	130	27,328.3	1,349.4
CTPP North	5090371074	VOIL	1	47.5	3.4	1.5	118	12,094.6	594.7
CTPP North	5090371355	CTPC	1	81.0	2.8	2.3	116	14,864.9	1,483.9
CTPP North	5090371436	CTPC	1	39.5	1.8	1.8	132	9,715.7	526.6
CTPP North	5090371565	CTPC	1	13.5	0.3	0.3	130	3,790.4	203.8
CTPP North	5090371615	LPFC	1	26.0	2.3	0.6	119	6,388.1	382.9
CTPP North	5090371724	LPFC	1	32.9	2.3	1.0	119	8,587.0	423.2
CTPP North	5090371730	LPFC	1	29.5	3.7	3.4	119	7,245.9	336.0
CTPP North	5090371731	LPFC	1	16.6	1.9	0.6	128	4,604.8	199.7
CTPP North	5090371766	LPFC	1	47.2	1.6	1.5	135	13,640.6	648.5
CTPP North	5090371965	LPFC	1	62.9	2.8	2.3	123	16,366.4	747.7
CTPP North	5090372003	LPFC	1	74.3	3.5	2.6	132	20,025.6	893.3
CTPP North	5090372018	LPFC	1	26.8	0.9	0.7	129	7,341.4	468.0
CTPP North	5090372048	LPFC	1	37.2	2.9	1.4	116	8,976.9	774.8
CTPP North	5090372074	LPFC	1	29.2	2.9	0.9	119	7,717.3	346.3
CTPP North	5090372131	LPFC	1	45.5	1.8	1.3	130	12,332.7	575.4
CTPP North	5090372176	LPFC	1	20.0	1.9	1.4	123	4,914.9	233.5
CTPP North	5090372187	LPFC	1	18.4	0.7	0.6	125	4,525.0	220.3
CTPP North	5090372278	LPFC	1	9.7	0.1	0.1	124	2,535.3	115.0
CTPP North	5090472400	CTPC	1	33.1	2.2	2.2	99	6,324.5	506.1
CTPP North	5100390324	SFPL	1	56.6	1.0	1.0	107	11,056.9	826.7
CTPP North	5100390420	SFPL	1	39.4	1.0	1.0	102	8,356.2	436.9
CTPP North	5100390467	SFPL	1	81.7	3.7	2.9	115	20,173.7	1,138.5
CTPP North	5100390491	SFPL	1	13.8	0.5	0.2	103	2,893.4	483.9
CTPP North	5100390533	SFPL	1	57.5	5.7	2.0	106	11,697.6	763.6
CTPP North	5100390604	CTPN	1	26.3	1.8	0.7	111	5,993.8	340.5
CTPP North	5100390670	CTPN	1	15.8	0.4	0.4	104	3,447.1	184.6
CTPP North	5100390674	CTPN	1	24.7	0.7	0.7	111	5,915.3	287.0
CTPP North	5100390696	CTPN	1	17.5	0.5	0.5	106	4,048.0	199.2
CTPP North	5100390747	CTPN	1	18.3	0.2	0.2	117	4,699.3	230.7
CTPP North	5100390777	CTPN	1	46.5	2.7	1.3	114	11,192.9	546.5
CTPP North	5100390815	CTPN	1	17.2	1.0	0.4	111	4,156.9	224.6
CTPP North	5100390844	CTPN	1	12.9	0.3	0.3	136	2,730.2	471.8
CTPP North	5100390968	SFPL	1	61.7	1.9	1.4	111	15,134.5	797.4
CTPP North	5100391016	SFPL	1	18.7	0.3	0.3	106	4,353.1	238.0
CTPP North	5100391047	SFPL	1	13.0	0.4	0.4	108	3,043.4	231.9
CTPP North	5100391071	SFPL	1	92.4	3.3	3.3	107	19,688.6	3,615.3
CTPP North	5100391147	CTPN	1	23.3	0.9	0.9	104	5,047.3	291.5
CTPP North	5100391693	SFPL	1	7.5	0.2	0.2	113	1,718.7	86.8
CTPP North	5100391723	CTPN	1	40.2	2.2	0.7	99	8,090.0	435.6
CTPP North	5100391872	CTPN	1	24.0	0.2	0.2	104	4,856.6	278.8
CTPP North	5100391972	CTPN	1	7.7	0.7	-	153	1,703.5	93.8
CTPP North	5070352916	CTPS	2	7.3	0.2	0.2	125	1,936.9	90.5
CTPP North	5070352919	CTPS	2	15.4	1.5	0.5	110	3,558.9	179.8
CTPP North	5070353030	CTPS	2	9.3	0.5	0.5	121	2,398.1	110.6
CTPP North	507035303043	CTPS	2	21.8	1.4	1.4	127	5,103.9	410.9
CTPP North	5070353046	CTPS	2	13.5	1.5	1.5	121	3,468.0	158.9
CTPP North	5070353073	CTPS	2	5.6	2.3	0.3	113	1,331.3	68.4
CTPP North	5070353094	CTPS	2	8.1	3.6	0.6	117	2,002.9	103.3
CTPP North	5070353118	CTPS	2	9.3	1.4	0.5	98	1,715.8	98.9
CTPP North	5070353139	CTPS	2	11.5	0.1	0.1	114	2,764.5	130.0
CTPP North	5070353169	CTPS	2	4.7	0.0	0.0	102	750.0	58.3
CTPP North	5080352592	CTPS	2	16.6	0.3	0.3	118	4,112.5	187.4

Block Information

Compartment	Opening Number	Operator	Pass	Area	Passive Area	Non Forested Area	Average Age	Coniferous Volume	Deciduous Volume
CTPP North	5080361815	MCLN	2	16.6	1.3	1.3	130	3,410.0	193.7
CTPP North	5080361845	MCLN	2	14.8	0.4	0.3	143	3,933.0	179.2
CTPP North	5080361851	MCLN	2	2.1	0.1	0.1	136	603.2	26.0
CTPP North	5080361864	MCLN	2	4.4	0.2	0.2	141	1,235.9	59.0
CTPP North	5080361871	MCLN	2	13.2	0.3	0.3	127	3,403.8	155.5
CTPP North	5080361882	MCLN	2	14.6	1.8	0.4	131	3,322.7	538.6
Burnt Timber Creek	5080310578	SFP	2	12.3	0.1	0.1	116	2,483.3	386.6
Burnt Timber Creek	5080310689	SFP	2	16.1	0.5	0.4	93	3,055.6	251.2
Burnt Timber Creek	5080310741	SFP	2	5.4	0.3	0.3	93	1,084.3	55.9
Burnt Timber Creek	5080310753	SFP	2	5.8	-	-	95	1,173.5	59.7
Burnt Timber Creek	5080310812	SFP	2	3.5	3.4	0.1	99	581.1	36.5
Burnt Timber Creek	5090300956	SFP	2	13.0	2.1	1.0	89	2,475.7	139.4
Burnt Timber Creek	5090301103	SFP	2	41.4	1.4	0.1	106	9,440.3	464.3
Burnt Timber Creek	5090301153	SFP	2	12.0	0.4	0.1	110	2,378.4	133.3
Burnt Timber Creek	5090301403	SFP	2	18.4	5.0	0.9	100	3,964.3	198.5
Burnt Timber Creek	5090301451	SFP	2	18.0	6.8	0.7	106	4,264.7	205.7
Burnt Timber Creek	5090301547	SFP	2	26.5	12.5	0.0	102	5,758.1	291.3
Burnt Timber Creek	5090301572	SFP	2	11.3	2.6	0.3	101	2,384.2	122.9
Burnt Timber Creek	5090301577	SFP	2	9.8	1.1	0.9	103	2,241.4	103.9
Burnt Timber Creek	5090302147	SFP	2	18.1	4.0	0.0	101	3,798.1	198.6
Burnt Timber Creek	5090302177	SFP	2	29.3	3.4	0.8	98	6,181.1	314.6
Burnt Timber Creek	5090302223	SFP	2	18.7	2.7	0.1	109	4,581.0	208.6
Burnt Timber Creek	5090302230	SFP	2	24.1	6.9	0.2	111	5,733.3	274.9
Burnt Timber Creek	5090302244	SFP	2	7.5	0.6	0.6	101	1,713.7	77.6
Burnt Timber Creek	5090302259	SFP	2	38.9	10.0	0.6	97	8,147.9	423.4
Burnt Timber Creek	5090302274	SFP	2	5.8	0.6	0.3	109	1,382.5	64.7
Burnt Timber Creek	5090302279	SFP	2	11.5	3.8	0.7	103	2,541.1	127.7
Burnt Timber Creek	5090302295	SFP	2	8.6	1.4	0.6	111	2,032.8	96.9
Burnt Timber Creek	5090302301	SFP	2	12.6	1.5	0.2	108	2,971.1	143.0
Burnt Timber Creek	5090302602	SFP	2	24.6	0.7	0.2	103	5,215.8	268.9
Burnt Timber Creek	5090302669	SFP	2	70.4	3.3	-	105	14,647.6	773.3
Burnt Timber Creek	5090302703	SFP	2	13.9	1.0	-	105	2,831.1	155.4
Burnt Timber Creek	5090302733	SFP	2	8.0	1.4	0.0	102	1,771.9	88.3
Burnt Timber Creek	5090302739	SFP	2	10.5	0.8	-	97	2,194.3	113.1
Burnt Timber Creek	5090302762	SFP	2	5.0	0.3	-	96	1,036.8	58.2
Burnt Timber Creek	5090302789	SFP	2	4.9	0.0	0.0	101	1,076.0	53.4
Burnt Timber Creek	5090302826	SFP	2	17.5	1.1	0.3	100	3,612.3	187.0
Burnt Timber Creek	5090302869	SFP	2	10.5	2.7	-	102	2,121.8	116.1
Burnt Timber Creek	5090302976	SFP	2	16.8	7.0	-	100	3,356.9	183.1
Burnt Timber Creek	5090302979	SFP	2	26.8	13.6	0.3	100	5,150.6	284.4
Burnt Timber Creek	5090302983	SFP	2	11.0	0.7	0.1	100	2,447.5	119.6
Burnt Timber Creek	5090303244	SFP	2	6.5	0.3	0.1	114	1,416.1	75.3
Burnt Timber Creek	5090303263	SFP	2	27.2	14.6	-	107	5,272.0	299.6
Burnt Timber Creek	5090303288	SFP	2	6.9	0.2	0.2	102	1,356.9	86.5
Burnt Timber Creek	5090303318	SFP	2	3.1	2.9	0.2	110	735.4	34.7
Burnt Timber Creek	5090303325	SFP	2	37.1	12.1	1.1	94	7,532.9	384.9
Burnt Timber Creek	5090303363	SFP	2	11.6	5.0	0.2	98	2,331.0	135.3
Burnt Timber Creek	5090303389	SFP	2	33.3	7.7	0.6	101	6,976.9	452.1
Burnt Timber Creek	5090303456	SFP	2	23.1	2.4	0.0	99	4,733.9	584.3
Burnt Timber Creek	5090303460	SFP	2	10.8	1.0	-	121	2,066.1	124.4
Burnt Timber Creek	5090303496	SFP	2	13.1	7.8	-	110	2,621.9	215.4
Burnt Timber Creek	5090303601	SFP	2	11.6	2.1	0.6	114	2,966.8	134.8
Burnt Timber Creek	5090303604	SFP	2	4.0	0.3	0.2	107	877.2	67.5
Burnt Timber Creek	5090310103	SFP	2	35.6	4.1	0.5	99	7,502.6	385.2
Burnt Timber Creek	5090310147	SFP	2	26.4	1.1	0.7	106	5,915.7	294.4
Burnt Timber Creek	5090310187	SFP	2	57.0	3.7	1.5	110	12,264.2	653.0
Burnt Timber Creek	5090310232	SFP	2	29.4	24.3	0.2	113	7,076.5	340.5
Burnt Timber Creek	5090310260	SFP	2	26.7	17.9	-	100	5,807.3	292.0
Burnt Timber Creek	5090310370	SFP	2	22.3	3.0	0.2	97	4,310.5	336.7
Burnt Timber Creek	5090310480	SFP	2	55.9	38.4	0.7	99	10,518.5	631.8
Burnt Timber Creek	5090311292	SFP	2	2.7	0.0	0.0	105	572.1	30.0
Burnt Timber Creek	5100300239	SFP	2	52.4	2.3	0.8	103	11,283.1	580.8
Burnt Timber Creek	5100300375	SFP	2	92.2	6.5	0.9	108	20,760.6	1,044.3
Burnt Timber Creek	5100301048	SFP	2	6.1	0.2	-	114	1,219.3	71.2
Burnt Timber Creek	5100301136	SFP	2	29.0	6.3	0.4	102	6,358.8	318.8
Burnt Timber Creek	5100301227	SFP	2	22.8	0.8	0.3	108	4,733.1	256.1
North Horburg	5100392811	SFP	1	43.1	5.6	0.4	103	7,794.9	2,365.4
North Horburg	5100392916	SFP	1	22.0	22.0	0.1	107	4,798.0	290.7
North Horburg	5100392949	SFP	1	25.7	25.3	0.8	101	4,938.6	571.9
North Horburg	5100392966	SFP	1	35.4	14.1	0.5	111	7,858.2	521.0
North Horburg	5100392972	SFP	1	53.2	2.9	2.0	107	11,221.7	671.8
North Horburg	5100393089	SFP	1	5.9	5.9	0.2	108	1,207.3	235.3
North Horburg	5100393111	SFP	1	50.0	49.5	0.4	97	8,429.2	1,288.0
North Horburg	5100393148	SFP	1	71.5	3.4	2.0	107	13,280.4	3,351.7
North Horburg	5100393236	SFP	1	14.2	1.4	0.4	106	2,920.2	198.1
North Horburg	5100393252	SFP	1	3.6	3.6	0.1	111	860.6	40.9
North Horburg	5100393268	SFP	1	15.5	0.7	0.7	140	2,649.0	1,383.4
North Horburg	5100393283	SFP	1	19.9	11.7	0.2	120	3,993.4	637.7
North Horburg	5100393312	SFP	1	8.3	1.6	0.8	99	1,672.0	89.8
North Horburg	5100393314	SFP	1	22.9	1.0	0.5	103	4,068.3	1,377.7
North Horburg	5100393425	SFP	1	69.0	8.4	1.8	114	13,739.6	4,118.1
North Horburg	5100393547	SFP	1	14.6	0.1	0.1	116	2,734.4	1,125.4
North Horburg	5100400464	SFP	1	7.9	0.7	0.1	116	1,266.8	781.7
North Horburg	5100400530	SFP	1	7.9	0.1	0.1	132	1,435.3	811.2
North Horburg	5100400625	SFP	1	65.2	4.3	1.5	95	9,461.0	5,181.1
North Horburg	5110392517	SFP	1	114.9	2.6	2.2	108	24,171.4	1,470.7

Block Information

Compartment	Opening Number	Operator	Pass	Area	Passive Area	Non Forested Area	Average Age	Coniferous Volume	Deciduous Volume
North Horburg	5110392587	SFP	1	55.0	6.2	0.2	111	11,575.4	813.4
North Horburg	5110393555	SFP	1	34.0	1.4	0.2	100	6,520.0	789.8
North Horburg	5110393575	SFP	1	7.4	0.3	0.1	88	1,075.8	378.3
North Horburg	5110393588	SFP	1	15.7	2.6	0.4	99	2,030.6	922.9
North Horburg	5110393637	SFP	1	9.2	0.0	0.0	89	1,222.3	687.5
North Horburg	5110393675	SFP	1	14.4	0.2	0.2	92	1,969.4	660.3
North Horburg	5110400149	SFP	1	19.6	1.7	0.5	94	3,262.1	357.0
North Horburg	5110400176	SFP	1	50.8	6.8	1.5	85	6,341.9	2,792.1
North Horburg	5110401167	SFP	1	44.8	4.5	1.3	98	5,263.0	4,509.9
North Horburg	5110401177	SFP	1	15.7	2.1	0.3	113	2,372.3	1,681.3
North Horburg	5110401185	SFP	1	24.7	1.2	1.2	93	3,951.7	1,239.1
North Horburg	5110401222	SFP	1	10.8	0.9	0.4	101	1,422.5	770.4
North Horburg	5110401528	SFP	1	33.0	5.5	0.4	82	4,871.3	613.5
North Horburg	5110401566	SFP	1	23.0	2.3	0.2	109	4,295.2	621.0
North Horburg	5110401573	SFP	1	13.2	1.6	0.6	92	1,901.2	755.1
North Horburg	5110401668	SFP	1	17.6	0.6	0.2	81	2,325.8	301.3
North Horburg	5110402098	SFP	1	6.0	1.1	1.0	106	1,025.4	376.5
North Horburg	5110402165	SFP	1	7.2	0.1	0.1	78	1,011.3	82.8
North Horburg	5110402167	SFP	1	37.6	1.4	0.8	96	6,597.6	627.9
North Horburg	5110402218	SFP	1	32.3	0.9	0.9	101	5,905.2	1,103.8
North Horburg	5110402251	SFP	1	21.4	0.8	0.2	89	2,289.6	1,687.3
North Horburg	5110402818	SFP	1	5.4	0.8	-	86	872.3	92.6
North Horburg	5110402828	SFP	1	3.4	0.3	0.1	87	435.7	33.8
North Horburg	5110402884	SFP	1	30.7	0.2	0.2	115	6,246.1	466.0
North Horburg	5110402993	SFP	1	32.8	3.1	1.0	95	6,187.3	341.3
North Horburg	5110402997	SFP	1	6.5	0.4	0.0	88	1,016.3	155.9
North Horburg	5110403256	SFP	1	8.3	5.2	0.2	131	2,182.3	158.2
North Horburg	5110403285	SFP	1	1.3	0.3	0.1	136	360.9	16.1
North Horburg	5110403294	SFP	1	2.7	0.3	0.1	90	467.1	27.1
North Horburg	5110403315	SFP	1	3.6	0.3	0.1	107	805.1	40.7
North Horburg	5110403323	SFP	1	7.5	1.8	0.4	104	1,257.3	315.8
Harlech	5130410496	SFP	1	6.7	-	-	116	1,410.0	78.7
Harlech	5130410498	SFP	1	16.2	0.5	0.5	108	3,168.1	182.6
Harlech	5130410659	SFP	1	40.2	0.8	0.1	96	7,458.1	582.0
Harlech	5130410710	SFP	1	11.7	0.4	0.1	123	2,441.3	138.5
Harlech	5130410733	SFP	1	12.7	0.0	-	110	2,298.1	205.9
Harlech	5130410775	SFP	1	68.0	3.7	0.7	109	12,813.6	754.2
Harlech	5130410810	SFP	1	5.3	0.1	0.0	66	573.6	40.3
Harlech	5130410823	SFP	1	21.6	0.9	0.5	93	3,543.1	216.6
Harlech	5130410946	SFP	1	78.8	5.8	1.6	100	14,157.4	1,591.8
Harlech	5130410973	SFP	1	95.5	7.0	1.8	100	17,005.3	1,032.6
Harlech	5130411542	SFP	1	49.2	2.7	1.3	94	7,103.9	490.9
Harlech	5130411657	SFP	1	41.3	4.7	0.4	99	7,009.3	998.6
Harlech	5130411682	SFP	1	17.0	1.0	0.1	99	2,941.9	180.3
Harlech	5130411695	SFP	1	20.9	1.3	0.2	85	3,141.6	203.1
Harlech	5130411833	SFP	1	95.8	9.9	1.7	107	19,275.4	1,071.9
Harlech	5130411889	SFP	1	46.2	3.4	0.2	113	10,284.0	567.7
Harlech	5130411957	SFP	1	78.5	5.6	2.3	102	13,676.1	856.1
Harlech	5130412025	SFP	1	13.7	0.2	0.1	96	2,486.5	144.1
Harlech	5130412053	SFP	1	46.1	2.3	-	106	8,697.8	515.4
Harlech	5130412106	SFP	1	45.8	2.2	1.8	118	9,296.4	550.3
Harlech	5140410248	SFP	1	6.6	0.4	0.1	108	1,190.9	181.9
Harlech	5140411025	SFP	1	20.8	2.3	0.3	121	5,480.0	249.1
Harlech	5140411078	SFP	1	19.8	1.3	0.3	105	4,498.6	217.8
Harlech	5140411083	SFP	1	4.7	0.1	0.1	88	839.8	49.6
Harlech	5140411092	SFP	1	5.2	0.3	0.3	84	872.6	49.8
Harlech	5140411137	SFP	1	30.5	1.6	0.8	95	6,066.0	555.4
Harlech	5140411154	SFP	1	49.7	2.9	0.6	94	8,926.6	663.9
Harlech	5140411308	SFP	1	27.8	6.1	0.3	118	6,505.8	327.9
Harlech	5140411331	SFP	1	29.4	1.7	0.2	105	6,359.9	326.7
Harlech	5140411347	SFP	1	13.0	1.1	0.3	116	3,372.1	153.1
Harlech	5140411455	SFP	1	26.9	2.1	0.2	117	6,714.1	361.1
Harlech	5140411468	SFP	1	24.5	0.8	0.1	114	5,602.5	443.8
Harlech	5140411493	SFP	1	23.1	2.6	0.2	125	5,994.3	276.5
Harlech	5140411527	SFP	1	15.3	6.7	0.7	125	3,653.1	183.1
Harlech	5140411607	SFP	1	32.7	3.5	-	134	8,122.5	519.1
Harlech	5140411646	SFP	1	17.4	0.5	0.0	135	4,721.0	211.9
Harlech	5140411663	SFP	1	20.5	0.4	0.3	126	5,298.1	247.3
Harlech	5140411674	SFP	1	6.1	0.0	0.0	126	1,709.9	73.8
Harlech	5140411690	SFP	1	24.8	3.2	0.5	125	6,518.9	298.8
Harlech	5140411803	SFP	1	5.3	0.2	-	122	1,254.5	65.0
Harlech	5140411829	SFP	1	10.6	0.4	0.3	132	2,721.8	306.9
Harlech	5140411836	SFP	1	42.7	2.7	0.4	127	10,857.0	547.3
Harlech	5140411945	SFP	1	9.9	0.6	0.6	130	2,777.5	114.6
Harlech	5140411962	SFP	1	22.5	0.2	0.1	129	5,732.7	509.8
Harlech	5140411984	SFP	1	12.4	1.9	0.2	136	3,258.9	150.8
Harlech	5140411988	SFP	1	5.2	0.3	0.0	136	1,275.6	63.8
Harlech	5140411991	SFP	1	25.6	1.7	0.0	133	7,091.9	354.3
Harlech	5140412037	SFP	1	14.7	1.0	1.0	48	788.6	108.3
Harlech	5140412058	SFP	1	3.4	0.2	0.2	141	993.4	39.9
Harlech	5140412075	SFP	1	32.0	4.2	0.5	132	9,040.2	389.0
Harlech	5140412088	SFP	1	17.8	1.0	0.7	138	4,266.1	619.2
Harlech	5140412125	SFP	1	10.9	1.8	0.9	133	3,155.3	130.8
Harlech	5140412153	SFP	1	11.0	0.4	0.2	132	2,960.2	130.7
Harlech	5140412158	SFP	1	21.6	0.4	0.4	130	5,668.8	256.1
Harlech	5140412160	SFP	1	8.6	0.8	-	133	2,388.6	102.5

Block Information

Compartment	Opening Number	Operator	Pass	Area	Passive Area	Non Forested Area	Average Age	Coniferous Volume	Deciduous Volume
Harlech	5140412183	SFP	1	21.6	1.5	0.0	134	5,510.4	262.6
Harlech	5140412188	SFP	1	4.7	-	-	136	1,079.1	56.8
Harlech	5140412206	SFP	1	9.8	0.0	0.0	129	2,611.9	118.7
Harlech	5140412224	SFP	1	9.2	0.1	0.1	136	2,530.8	112.8
Harlech	5140412238	SFP	1	5.6	0.5	-	152	1,259.9	64.4
Harlech	5140412242	SFP	1	20.1	0.2	0.2	131	5,213.8	412.0
Harlech	5140412278	SFP	1	4.3	0.0	0.0	134	1,170.4	52.2
Harlech	5140412290	SFP	1	35.7	2.1	0.4	100	6,978.8	635.0
Harlech	5150411321	SFP	1	3.6	0.3	0.2	57	213.1	82.1
Harlech	5150411333	SFP	1	9.0	-	-	87	1,383.8	358.0
Harlech	5150411348	SFP	1	12.4	1.3	-	136	3,456.7	151.2
Harlech	5150411378	SFP	1	6.6	0.6	-	136	1,919.2	81.0
Harlech	5150411803	SFP	1	31.9	1.4	0.1	131	8,589.0	605.4
Harlech	5150411829	SFP	1	1.5	0.1	0.0	128	314.5	87.7
Harlech	5150412420	SFP	1	3.2	-	-	136	933.9	39.2
Harlech	5150412442	SFP	1	26.7	0.5	0.3	111	3,060.1	217.3
Gap Creek	5130390778	SFP	1	52.1	7.1	3.2	148	12,380.6	682.9
Gap Creek	5130390797	SFP	1	12.8	0.6	0.2	134	3,026.9	153.7
Gap Creek	5130390878	SFP	1	75.5	21.6	-	136	17,487.3	1,046.2
Gap Creek	5130391859	SFP	1	63.6	8.8	0.8	140	14,656.2	760.6
Gap Creek	5130391874	SFP	1	101.8	11.6	2.9	132	24,493.8	1,207.1
Gap Creek	5130391922	SFP	1	12.7	-	-	136	3,209.4	155.3
Gap Creek	5140391058	SFP	1	21.4	2.2	0.4	222	5,070.1	197.8
Gap Creek	5140391245	SFP	1	68.8	12.6	0.0	219	14,564.4	656.5
Gap Creek	5140391288	SFP	1	83.6	15.1	2.7	167	17,808.8	929.4
Gap Creek	5140391305	SFP	1	99.5	18.8	0.1	138	24,396.1	1,210.2
Gap Creek	5140391553	SFP	1	19.4	0.5	-	136	5,131.0	236.9
Gap Creek	5140391668	SFP	1	88.6	4.3	0.9	132	19,883.5	1,054.1
Gap Creek	5140391675	SFP	1	54.0	1.5	0.4	152	13,130.5	628.4
Gap Creek	5140391695	SFP	1	16.9	0.7	-	136	4,763.9	205.9
Gap Creek	5140392235	SFP	1	6.8	0.1	-	137	1,612.5	83.1
Gap Creek	5140392253	SFP	1	24.1	1.6	-	137	5,165.2	294.4
Gap Creek	5140392267	SFP	1	30.2	1.1	-	141	6,603.6	366.4
Gap Creek	5140392328	SFP	1	21.3	1.2	-	143	4,940.8	257.3
Gap Creek	5140392393	SFP	1	35.1	3.2	0.4	137	8,370.2	426.5
Gap Creek	5140392476	SFP	1	76.1	2.0	0.1	136	18,054.2	927.6
Gap Creek	5140392635	SFP	1	27.7	3.0	-	141	6,413.3	335.3
Gap Creek	5140392674	SFP	1	41.8	5.6	-	136	9,364.6	509.8
Haven Creek	5150410613	SFP	1	14.7	0.4	0.1	181	2,964.3	164.5
Haven Creek	5150410661	SFP	1	27.3	4.0	0.4	206	5,452.5	276.0
Haven Creek	5150410709	SFP	1	66.4	1.0	0.2	152	15,177.2	770.8
Haven Creek	5150410745	SFP	1	36.0	1.8	0.1	138	8,124.8	437.3
Haven Creek	5150410780	SFP	1	31.6	3.9	0.7	167	7,329.1	366.4
Haven Creek	5160401695	SFP	1	14.2	1.7	-	137	3,531.3	730.9
Haven Creek	5160410141	SFP	1	8.7	0.9	0.0	156	1,936.7	122.3
Haven Creek	5160410156	SFP	1	15.9	2.3	0.5	283	2,562.4	109.9
Haven Creek	5160410191	SFP	1	8.0	3.6	0.2	156	2,221.1	98.1
Haven Creek	5160411214	SFP	1	15.5	1.4	0.5	157	3,193.1	176.1
Haven Creek	5160411293	SFP	1	30.6	1.5	0.5	151	6,200.6	351.0
Haven Creek	5160411303	SFP	1	21.9	1.7	0.5	137	5,303.2	264.5
Haven Creek	5160411342	SFP	1	56.6	4.7	1.0	140	10,219.5	680.4
Haven Creek	5160411566	SFP	1	12.6	1.5	0.6	132	2,520.2	149.4
Haven Creek	5160412404	SFP	1	49.6	1.9	0.9	133	12,196.9	591.7
Haven Creek	5160412470	SFP	1	73.8	1.3	0.7	135	18,480.4	894.0
Haven Creek	5160412650	SFP	1	11.8	2.1	0.0	120	2,329.4	127.1
James River	5080332919	SFP	1	10.3	1.0	0.4	115	2,491.3	155.0
James River	5080332976	SFP	1	9.1	2.0	0.4	123	2,003.4	108.5
James River	5080333022	SFP	1	48.0	5.2	1.0	116	11,154.5	1,180.9
James River	5080333077	SFP	1	10.7	0.1	0.1	115	2,645.2	126.1
James River	5080333095	SFP	1	8.0	0.5	0.4	111	1,900.1	90.6
James River	5080333174	SFP	1	16.3	4.0	0.4	115	3,090.7	1,006.3
James River	5080333192	SFP	1	6.5	0.0	0.0	116	1,349.2	196.4
James River	5080333241	SFP	1	4.9	0.1	0.1	116	880.8	102.7
James River	5080340421	SFP	1	9.5	2.4	0.4	115	2,213.5	243.5
James River	5080340518	SFP	1	25.6	0.9	0.5	114	5,721.8	489.0
James River	5080340594	SFP	1	12.3	3.3	0.3	118	3,104.7	144.5
James River	5080340599	SFP	1	91.5	3.4	1.3	118	21,832.9	2,312.6
James River	5080340685	SFP	1	17.4	1.7	1.0	102	2,871.4	887.7
James River	5080340692	SFP	1	21.5	5.9	0.3	128	5,583.5	541.5
James River	5080340784	SFP	1	21.6	0.8	0.0	112	5,109.0	246.4
James River	5080340877	SFP	1	78.5	5.3	1.3	116	19,315.3	925.6
James River	5080341534	SFP	1	32.4	4.7	2.5	114	8,110.1	369.9
James River	5080341541	SFP	1	16.0	0.9	0.9	105	3,300.4	172.0
James River	5080341681	SFP	1	28.9	1.0	0.6	136	7,434.5	335.4
James River	5090331317	SFP	1	4.8	0.2	0.0	115	828.7	425.6
James River	5090331409	SFP	1	10.5	0.3	0.0	113	2,322.9	322.9
James River	5090331452	SFP	1	46.4	8.8	0.8	85	6,002.4	610.7
James River	5090331457	SFP	1	29.1	0.7	0.6	116	6,618.4	963.9
James River	5090332252	SFP	1	7.4	0.9	0.1	117	1,817.7	87.3
James River	5090332264	SFP	1	16.3	1.1	0.1	112	3,245.8	873.7
James River	5090332315	SFP	1	43.0	3.5	0.8	107	8,261.1	1,245.4
James River	5090332358	SFP	1	21.7	1.5	0.8	116	5,028.8	566.4
James River	5090332417	SFP	1	53.5	7.4	1.7	116	12,682.3	949.6
James River	5090332442	SFP	1	21.6	1.4	0.8	113	4,949.3	436.8
James River	5090332459	SFP	1	11.3	1.0	0.1	116	2,781.4	133.0
James River	5090332493	SFP	1	5.0	0.4	0.1	115	918.4	310.6

Block Information

Compartment	Opening Number	Operator	Pass	Area	Passive Area	Non Forested Area	Average Age	Coniferous Volume	Deciduous Volume
James River	5090332792	SFP	1	37.0	4.1	0.7	104	7,705.0	496.4
James River	5090332882	SFP	1	34.5	2.4	1.4	108	6,834.7	974.7
James River	5090333235	SFP	1	13.7	0.2	0.2	85	2,140.6	133.8
James River	5090333278	SFP	1	39.5	0.2	0.1	93	6,530.7	413.2
James River	5090333385	SFP	1	113.5	15.7	1.7	106	23,051.1	1,845.3
James River	5090340274	SFP	1	57.7	5.2	0.9	133	12,609.1	1,677.4
Jock Lake	5140390348	SFP	1	30.2	1.7	-	209	6,532.9	299.1
Jock Lake	5140390896	SFP	1	16.7	4.4	0.5	132	3,769.7	198.2
Jock Lake	5140390976	SFP	1	29.7	2.3	0.1	170	6,696.1	329.5
Jock Lake	5140390981	SFP	1	15.7	0.1	-	150	3,594.4	184.4
Jock Lake	5140391007	SFP	1	11.2	0.0	0.0	229	2,148.6	99.4
Jock Lake	5140391044	SFP	1	37.9	0.4	-	221	8,024.4	347.3
Jock Lake	5140391754	SFP	1	32.5	7.7	0.2	135	7,812.2	394.5
Jock Lake	5140391799	SFP	1	40.7	14.9	0.4	136	9,714.5	629.5
Lewis Creek	5110392056	SFP	1	102.6	3.0	1.6	96	17,423.1	1,507.5
Lewis Creek	5110392942	SFP	1	4.1	0.1	0.1	90	736.7	41.9
Lewis Creek	5110392945	SFP	1	2.1	0.1	0.1	79	307.5	19.3
Lewis Creek	5110393059	SFP	1	73.4	2.6	1.9	80	10,768.1	680.4
Lewis Creek	5110393074	SFP	1	26.8	0.5	0.5	93	4,770.4	277.0
Lewis Creek	5110393108	SFP	1	22.6	2.5	1.1	88	3,932.8	219.2
Lewis Creek	5110393134	SFP	1	55.7	0.8	0.7	93	10,215.0	569.0
Lewis Creek	5110393264	SFP	1	125.6	1.9	1.9	86	20,535.0	1,256.7
Lewis Creek	5110393425	SFP	1	32.7	0.9	0.9	94	5,946.1	394.7
Lewis Creek	5110400335	SFP	1	39.8	0.7	0.6	86	5,834.1	757.9
Lewis Creek	5110400430	SFP	1	122.0	6.3	4.1	85	19,304.5	1,656.3
Lewis Creek	5110400565	SFP	1	55.2	3.3	1.0	87	8,320.7	1,144.6
Lewis Creek	5110400670	SFP	1	189.7	8.2	6.3	87	31,483.7	2,079.2
Lewis Creek	5120392533	SFP	1	109.2	3.0	2.2	93	18,989.8	1,111.9
Lewis Creek	5120393563	SFP	1	16.7	0.1	0.1	131	4,402.4	214.3
Lewis Creek	5120393621	SFP	1	51.3	1.1	0.6	111	10,865.7	562.4
Lewis Creek	5120393654	SFP	1	19.8	0.2	0.2	114	4,056.6	218.7
Lick Creek	5100380835	SFP	2	62.7	3.6	2.3	97	12,195.5	768.9
Lick Creek	5100380848	SFP	2	29.3	1.3	0.2	91	5,360.2	740.2
Lick Creek	5100380915	SFP	2	8.4	0.2	0.2	96	1,717.5	113.2
Lick Creek	5100381005	SFP	2	67.4	3.4	2.3	97	13,123.1	1,274.8
Lick Creek	5100381047	SFP	2	20.1	0.5	0.5	95	4,114.5	206.8
Lick Creek	5100381096	SFP	2	18.8	0.4	0.4	118	4,817.3	271.2
Lick Creek	5100381109	SFP	2	25.0	0.9	0.9	111	6,049.4	277.9
Lick Creek	5100381128	SFP	2	3.4	0.2	0.2	117	845.4	58.5
Lick Creek	5100381136	SFP	2	17.3	0.6	0.4	100	3,151.3	201.8
Lick Creek	5100381451	SFP	2	28.5	0.7	0.7	116	6,402.4	591.9
Lick Creek	5100381590	SFP	2	4.1	0.2	0.2	114	1,031.1	45.2
Lick Creek	5100381660	SFP	2	50.7	1.5	1.4	96	9,767.4	899.0
Lick Creek	5100381780	SFP	2	45.1	1.9	1.8	93	7,841.2	463.7
South Burntstick Lake	5060351904	SFP	1	6.4	0.5	0.4	101	971.6	499.2
South Burntstick Lake	5060351949	SFP	1	14.7	4.6	0.5	86	1,650.1	1,022.1
South Burntstick Lake	5060351951	SFP	1	4.2	0.3	0.2	90	408.6	387.2
South Burntstick Lake	5060351993	SFP	1	5.4	2.4	0.8	96	665.9	508.1
South Burntstick Lake	5060352036	SFP	1	14.9	3.1	0.9	113	1,557.3	2,172.0
South Burntstick Lake	5060352103	SFP	1	4.9	1.9	0.3	104	693.8	341.8
South Burntstick Lake	5060352134	SFP	1	10.4	4.2	0.9	98	737.9	974.3
South Burntstick Lake	5060352920	SFP	1	9.8	0.9	0.6	85	790.6	1,030.6
South Burntstick Lake	5060352923	SFP	1	10.5	0.5	0.5	85	661.2	1,420.8
South Burntstick Lake	5060352929	SFP	1	1.5	0.1	0.1	80	67.2	217.7
South Burntstick Lake	5060352936	SFP	1	10.0	2.2	0.2	94	1,628.8	420.5
South Burntstick Lake	5060352965	SFP	1	11.4	0.6	0.3	103	1,657.4	1,033.8
South Burntstick Lake	5060352981	SFP	1	3.9	0.2	0.1	93	299.7	472.7
South Burntstick Lake	5060352982	SFP	1	4.0	0.9	0.1	82	196.6	492.1
South Burntstick Lake	5060353013	SFP	1	3.7	0.0	0.0	108	495.4	381.8
South Burntstick Lake	5060353061	SFP	1	14.0	0.4	0.4	106	2,019.2	1,422.4
South Burntstick Lake	5060353065	SFP	1	4.5	0.6	0.2	108	812.2	228.2
South Burntstick Lake	5060353086	SFP	1	1.8	0.2	0.2	107	360.1	87.5
South Burntstick Lake	5060353097	SFP	1	6.5	1.1	0.3	115	1,598.4	88.2
South Burntstick Lake	5060353213	SFP	1	4.0	0.3	0.1	110	666.3	184.6
South Burntstick Lake	5060353231	SFP	1	4.7	0.3	0.3	104	890.5	175.8
South Burntstick Lake	5060353234	SFP	1	5.3	0.3	0.3	90	627.9	479.6
South Burntstick Lake	5060353274	SFP	1	11.3	1.8	0.9	91	558.5	1,796.3
South Burntstick Lake	5060353292	SFP	1	4.1	0.5	0.1	86	204.8	570.7
South Burntstick Lake	5070350113	SFP	1	17.0	0.2	0.2	115	2,673.2	1,733.3
South Burntstick Lake	5070350143	SFP	1	45.4	1.4	1.4	120	9,876.6	1,391.2
South Burntstick Lake	5070350231	SFP	1	39.8	2.0	2.0	112	9,505.7	453.9
South Burntstick Lake	5070350283	SFP	1	46.1	1.3	1.3	113	9,658.8	2,088.5
South Burntstick Lake	5070350546	SFP	1	25.3	0.2	0.2	116	5,832.3	599.3
South Burntstick Lake	5070350925	SFP	1	31.7	1.0	0.2	141	7,710.6	781.9
South Burntstick Lake	5070350960	SFP	1	31.1	1.9	0.7	111	6,561.7	600.3
South Burntstick Lake	5070350997	SFP	1	11.9	0.6	0.5	103	2,553.8	147.7
South Burntstick Lake	5070351015	SFP	1	9.7	0.3	0.3	109	1,749.9	447.4
South Burntstick Lake	5070351031	SFP	1	2.2	0.0	0.0	116	373.7	192.2
South Burntstick Lake	5070351067	SFP	1	22.4	0.8	0.7	117	4,117.9	796.2
South Burntstick Lake	5070351085	SFP	1	59.2	1.9	1.0	115	13,542.1	920.3
South Burntstick Lake	5070351118	SFP	1	7.0	0.5	0.2	112	1,657.3	81.3
South Burntstick Lake	5070351139	SFP	1	2.0	0.1	0.0	113	475.0	22.9
South Burntstick Lake	5070351146	SFP	1	2.4	0.1	0.1	121	501.8	84.0
South Burntstick Lake	5070351148	SFP	1	1.9	0.2	0.2	105	409.1	23.4
South Burntstick Lake	5070351155	SFP	1	2.2	2.2	0.2	106	487.8	32.8
South Burntstick Lake	5070351158	SFP	1	2.1	0.2	0.1	109	482.8	28.8

Block Information

Compartment	Opening Number	Operator	Pass	Area	Passive Area	Non Forested Area	Average Age	Coniferous Volume	Deciduous Volume
South Burntstick Lake	5070351159	SFP	1	1.7	0.2	0.1	114	349.7	19.4
South Burntstick Lake	5070351167	SFP	1	1.9	0.3	0.3	105	426.5	20.1
South Burntstick Lake	5070351169	SFP	1	2.2	0.2	0.2	107	418.8	123.3
South Burntstick Lake	5070351187	SFP	1	2.0	0.1	0.1	114	428.9	22.7
South Burntstick Lake	5070351198	SFP	1	2.2	0.1	0.1	139	484.1	26.4
South Burntstick Lake	5070351199	SFP	1	2.1	0.2	0.2	111	380.1	24.2
South Burntstick Lake	5070351321	SFP	1	1.4	1.2	0.2	156	284.2	19.9
South Burntstick Lake	5070351389	SFP	1	2.2	0.2	0.2	123	415.0	24.1
South Burntstick Lake	5070351398	SFP	1	1.6	1.2	1.2	28	23.4	80.0
South Burntstick Lake	5070351443	SFP	1	12.6	0.7	0.7	150	2,619.3	385.2
South Burntstick Lake	5070351451	SFP	1	2.1	0.0	0.0	166	462.5	24.7
South Burntstick Lake	5070351459	SFP	1	46.1	4.1	1.0	124	7,888.9	2,556.9
South Burntstick Lake	5070351472	SFP	1	1.5	0.0	-	161	324.9	32.2
South Burntstick Lake	5070351480	SFP	1	1.6	0.1	0.0	143	307.1	56.1
South Burntstick Lake	5070351491	SFP	1	2.4	1.2	0.1	114	520.0	89.8
South Burntstick Lake	5070351504	SFP	1	9.3	0.4	0.2	166	2,088.1	125.9
South Burntstick Lake	5070351533	SFP	1	13.6	1.3	0.7	112	2,024.6	1,015.6
South Burntstick Lake	5070351566	SFP	1	5.4	0.1	0.1	134	837.4	628.5
South Burntstick Lake	5070351591	SFP	1	16.4	0.3	0.3	114	2,261.8	1,139.0
South Burntstick Lake	5070351599	SFP	1	11.7	0.5	0.5	120	2,762.4	366.5
South Burntstick Lake	5070351661	SFP	1	36.7	0.7	0.5	127	6,617.3	2,000.0
South Burntstick Lake	5070352283	SFP	1	18.8	0.4	0.4	114	3,034.3	1,860.5
South Burntstick Lake	5070352315	SFP	1	15.5	0.7	0.6	124	3,782.7	456.9
South Burntstick Lake	5070352345	SFP	1	38.6	1.4	1.2	122	9,080.3	1,101.7
South Burntstick Lake	5070352387	SFP	1	7.8	0.4	0.2	103	1,264.5	86.1
South Burntstick Lake	5070352409	SFP	1	7.6	1.1	0.3	108	817.8	990.9
South Burntstick Lake	5070352411	SFP	1	6.7	2.7	0.3	123	1,471.9	271.8
South Burntstick Lake	5070352460	SFP	1	6.9	0.3	0.2	135	1,444.4	83.7
South Burntstick Lake	5070352461	SFP	1	0.9	0.0	-	135	199.9	11.6
South Burntstick Lake	5070352482	SFP	1	1.7	1.6	1.6	5	13.8	0.8
Prairie Creek	5100371805	SFP	2	2.9	0.6	0.6	79	460.6	25.3
Prairie Creek	5100371904	SFP	2	5.7	4.1	0.6	126	1,254.2	66.5
Prairie Creek	5100371916	SFP	2	32.2	0.7	0.7	126	8,446.7	384.4
Prairie Creek	5100371922	SFP	2	5.8	0.1	0.1	129	1,593.7	70.0
Prairie Creek	5100371941	SFP	2	31.3	1.5	0.8	115	7,965.2	364.8
Prairie Creek	5100371968	SFP	2	21.5	0.4	0.3	132	5,595.8	258.8
Prairie Creek	5100371980	SFP	2	25.2	2.0	0.3	115	5,942.7	497.7
Prairie Creek	5100371983	SFP	2	8.2	0.2	0.2	116	2,108.1	96.0
Prairie Creek	5100372008	SFP	2	21.3	1.4	1.0	128	5,954.6	254.7
Prairie Creek	5100372013	SFP	2	10.9	2.7	0.6	121	2,733.3	129.6
Prairie Creek	5100372045	SFP	2	47.8	2.0	0.7	122	12,355.0	564.6
Prairie Creek	5100372073	SFP	2	53.1	2.0	1.9	126	12,864.0	687.0
Prairie Creek	5100372148	SFP	2	10.2	0.7	0.7	129	2,492.4	118.3
Prairie Creek	5100372804	SFP	2	10.4	0.2	0.0	135	2,847.3	125.9
Prairie Creek	5100372816	SFP	2	21.4	1.1	1.1	133	6,188.3	255.4
Prairie Creek	5100372844	SFP	2	10.1	4.8	0.4	133	2,668.1	120.7
Prairie Creek	5100372862	SFP	2	37.5	13.1	2.1	135	10,414.3	453.8
Prairie Creek	5100372911	SFP	2	46.4	2.0	1.3	123	11,834.6	551.2
Prairie Creek	5100372966	SFP	2	27.7	0.9	0.6	133	7,780.3	332.9
Prairie Creek	5100372980	SFP	2	42.9	18.5	2.1	132	11,659.6	515.0
Prairie Creek	5100373081	SFP	2	24.4	1.0	0.6	133	6,932.4	293.3
Prairie Creek	5100373274	SFP	2	28.5	4.8	1.2	134	7,512.2	343.0
Prairie Creek	5100373281	SFP	2	17.1	0.5	0.5	136	4,884.3	208.6
Prairie Creek	5100373347	SFP	2	22.9	2.1	0.3	135	5,977.6	277.0
Prairie Creek	5100373351	SFP	2	37.5	1.8	1.5	134	10,661.1	450.4
Prairie Creek	5100373416	SFP	2	30.0	0.7	0.7	135	8,810.7	364.2
Prairie Creek	5100380213	SFP	2	25.3	2.4	0.8	134	7,165.0	304.7
Prairie Creek	5100380324	SFP	2	19.7	0.9	0.3	130	5,177.5	271.0
Prairie Creek	5100380359	SFP	2	9.5	2.1	1.9	139	2,552.5	116.8
Prairie Creek	5100380372	SFP	2	35.1	4.8	1.0	135	9,877.4	421.4
Prairie Creek	5100380398	SFP	2	20.2	3.7	2.2	139	5,234.8	246.6
Prairie Creek	5100380422	SFP	2	44.5	2.8	1.1	134	12,525.0	533.1
Prairie Creek	5100380482	SFP	2	44.3	4.6	0.7	132	12,117.4	535.2
Prairie Creek	5100381151	SFP	2	18.0	3.1	1.0	115	4,085.2	209.6
Prairie Creek	5100381191	SFP	2	15.2	2.4	0.9	133	3,960.8	181.8
Prairie Creek	5110371267	SFP	2	5.5	0.2	0.1	96	1,113.6	59.3
Prairie Creek	5110371360	SFP	2	14.7	0.2	0.2	103	2,997.4	162.5
Prairie Creek	5110371383	SFP	2	29.9	0.3	0.2	102	5,812.2	323.3
Prairie Creek	5110372481	SFP	2	51.7	8.2	2.4	117	12,339.8	590.6
Raven River	5080343122	SFP	1	16.2	0.8	0.7	112	3,817.8	416.0
Raven River	5080343126	SFP	1	18.5	0.6	0.2	86	2,554.0	895.3
Raven River	5080350327	SFP	1	161.5	23.0	3.9	123	40,992.4	2,243.6
Raven River	5080350422	SFP	1	9.1	1.1	0.6	121	1,774.1	107.5
Raven River	5080350447	SFP	1	34.6	3.2	3.0	117	8,131.8	395.0
Raven River	5080350452	SFP	1	11.0	0.8	0.7	120	2,609.3	128.3
Raven River	5080350535	SFP	1	18.2	1.2	1.2	119	4,586.5	209.3
Raven River	5080350552	SFP	1	36.7	2.2	2.2	120	9,208.6	429.8
Raven River	5080350581	SFP	1	15.5	1.3	1.3	120	2,959.4	181.6
Raven River	5080350585	SFP	1	21.4	1.4	1.4	124	4,206.9	254.5
Raven River	5080350618	SFP	1	9.5	2.1	2.1	101	2,132.9	94.2
Raven River	5080350644	SFP	1	12.3	0.9	0.9	104	2,842.1	134.2
Raven River	5080350661	SFP	1	12.6	0.7	0.7	104	2,904.2	136.8
Raven River	5080350697	SFP	1	103.7	21.7	4.3	122	24,074.7	1,221.4
Raven River	5080350866	SFP	1	218.6	10.3	6.9	122	54,460.7	2,579.9
Raven River	5080350920	SFP	1	26.5	4.5	1.4	115	6,406.6	302.6
Raven River	5080350946	SFP	1	9.5	0.2	0.2	126	2,562.2	115.3

Block Information

Compartment	Opening Number	Operator	Pass	Area	Passive Area	Non Forested Area	Average Age	Coniferous Volume	Deciduous Volume
Raven River	5080351005	SFP	1	197.0	22.9	8.3	124	44,501.5	2,331.4
Raven River	5080351422	SFP	1	140.6	19.4	3.4	126	32,663.7	2,568.5
Raven River	5080351488	SFP	1	38.7	0.9	0.9	130	10,594.8	466.0
Raven River	5080351535	SFP	1	40.5	1.1	1.1	126	9,967.2	490.3
Raven River	5080351591	SFP	1	124.5	6.8	1.9	129	32,856.2	1,509.2
Raven River	5080351624	SFP	1	15.0	0.7	0.7	117	3,854.7	173.5
Raven River	5080351674	SFP	1	94.6	4.0	2.3	126	24,263.9	1,141.4
Raven River	5080351722	SFP	1	38.3	2.0	2.0	122	8,558.0	448.2
Raven River	5080351773	SFP	1	64.1	4.2	4.2	123	17,524.2	756.2
Raven River	5080352460	SFP	1	21.4	2.7	2.2	117	4,753.9	241.5
Raven River	5090343664	SFP	1	20.3	3.9	0.9	85	3,488.9	227.6
Red Deer River	5090310619	SFP	1	13.4	1.4	0.6	122	3,194.0	157.2
Red Deer River	5090310656	SFP	1	18.5	1.8	1.2	86	3,048.3	346.1
Red Deer River	5090310770	SFP	1	63.2	4.1	2.5	125	15,433.6	746.5
Red Deer River	5100301085	SFP	1	25.1	0.3	0.1	123	5,666.9	300.8
Red Deer River	5100301453	SFP	1	20.8	0.1	-	125	5,091.0	250.8
Red Deer River	5100301467	SFP	1	14.5	1.2	0.3	121	3,292.6	171.7
Red Deer River	5100301564	SFP	1	42.7	8.8	0.5	125	9,503.1	515.4
Red Deer River	5100301579	SFP	1	33.7	6.4	0.2	137	6,877.3	403.7
Red Deer River	5100301905	SFP	1	54.6	1.2	0.4	125	12,220.5	657.2
Red Deer River	5100302277	SFP	1	84.2	2.7	0.3	135	16,179.9	1,020.4
Red Deer River	5100302401	SFP	1	32.0	0.8	0.4	118	8,098.0	378.9
Red Deer River	5100302481	SFP	1	29.7	3.1	0.0	125	7,273.2	358.4
Red Deer River	5100302898	SFP	1	29.2	14.4	1.1	178	5,512.3	305.3
Red Deer River	5100303276	SFP	1	13.7	5.7	0.5	130	3,075.5	165.9
Red Deer River	5100303322	SFP	1	63.7	10.1	2.3	133	15,020.9	761.3
Red Deer River	5100303387	SFP	1	22.1	2.9	1.6	143	5,792.4	262.7
Red Deer River	5100303403	SFP	1	17.1	1.2	0.9	141	4,095.6	204.5
Red Deer River	5100303450	SFP	1	25.2	0.5	0.0	126	5,744.2	304.5
Red Deer River	5100303530	SFP	1	25.1	1.8	0.2	126	5,631.7	301.8
Red Deer River	5100310253	SFP	1	24.1	0.6	0.6	84	4,134.5	233.3
Red Deer River	5100310291	SFP	1	15.2	2.4	1.2	85	2,635.6	207.9
Red Deer River	5100310297	SFP	1	36.9	0.9	0.8	90	6,333.5	373.9
Red Deer River	5100310360	SFP	1	48.3	0.9	0.6	115	12,454.5	601.6
Red Deer River	5100311177	SFP	1	18.2	0.4	0.3	88	3,229.6	180.8
Red Deer River	5100311267	SFP	1	64.1	0.8	0.4	87	11,143.6	693.0
Red Deer River	5100311310	SFP	1	17.3	0.2	0.2	86	3,014.3	170.8
Red Deer River	5100311340	SFP	1	29.1	0.8	0.0	87	4,693.8	289.8
Red Deer River	5100311471	SFP	1	13.4	0.8	0.4	86	2,354.2	134.9
Bluehill	5080313036	SFP	1	54.7	1.5	0.8	124	12,264.7	648.5
Bluehill	5080320636	SFP	2	20.9	0.5	0.1	105	3,747.0	841.3
Bluehill	5080320743	SFP	2	15.7	0.7	0.2	110	3,188.3	261.7
Bluehill	5080321859	SFP	2	21.0	3.9	1.5	98	3,577.1	218.6
Bluehill	5080321912	SFP	2	21.2	0.5	0.5	47	1,907.0	103.1
Bluehill	5080321928	SFP	2	29.7	3.8	2.1	103	5,321.5	298.9
Bluehill	5080321939	SFP	2	20.4	2.2	1.9	86	2,532.0	195.5
Bluehill	5080321953	SFP	2	24.9	0.2	0.2	54	2,002.1	137.8
Bluehill	5080323014	SFP	2	43.9	3.4	2.4	153	6,970.9	484.9
Bluehill	5080323051	SFP	2	37.7	3.2	0.5	97	6,700.3	402.4
Bluehill	5080323136	SFP	2	37.1	1.0	0.9	124	6,572.2	445.9
Bluehill	5080323199	SFP	2	22.0	0.1	0.0	111	4,485.1	254.6
Bluehill	5090311554	SFP	2	2.4	0.2	0.2	118	520.2	30.5
Bluehill	5090311555	SFP	2	1.7	0.4	0.1	118	337.7	67.0
Bluehill	5090311562	SFP	2	9.7	1.8	0.6	112	1,755.0	349.0
Bluehill	5090312269	SFP	2	14.0	0.4	0.1	158	3,398.4	166.1
Bluehill	5090312275	SFP	2	15.2	1.4	0.5	119	3,990.8	173.0
Bluehill	5090312276	SFP	2	2.2	0.0	0.0	124	540.5	25.7
Bluehill	5090312638	SFP	2	14.5	0.2	0.2	153	3,652.4	163.5
Bluehill	5090312652	SFP	2	68.6	5.7	1.7	129	15,617.3	792.3
Bluehill	5090312656	SFP	2	40.1	2.5	0.6	128	10,236.6	480.8
Bluehill	5090313483	SFP	2	11.7	0.2	0.1	195	2,535.0	124.0
Bluehill	5090320193	SFP	2	29.5	0.3	-	137	6,425.3	360.6
Bluehill	5090321179	SFP	2	11.7	0.3	0.2	112	2,212.7	135.3
Bluehill	5090321227	SFP	2	13.0	1.4	0.5	145	3,214.4	158.9
Bluehill	5090321239	SFP	2	20.6	1.2	0.2	140	4,723.2	251.7
Bluehill	5090321278	SFP	2	60.4	5.0	1.2	117	12,845.6	869.4
Bluehill	5090321293	SFP	2	37.2	2.1	0.5	121	8,491.5	645.3
Bluehill	5090321385	SFP	2	48.7	1.7	1.1	114	8,957.7	560.1
Bluehill	5090322515	SFP	2	7.7	1.0	0.2	95	1,207.4	81.8
Bluehill	5090322543	SFP	2	18.9	6.5	0.6	135	3,486.7	221.0
Bluehill	5090322568	SFP	2	9.7	0.6	0.6	94	1,435.0	99.0
Bluehill	5090322614	SFP	2	18.7	2.5	0.1	118	3,395.7	219.4
Bluehill	5090322628	SFP	2	9.7	0.5	0.1	87	1,620.2	92.8
Bluehill	5090322654	SFP	2	20.2	0.6	0.2	117	2,941.7	223.0
Bluehill	5090322668	SFP	2	10.5	0.5	-	89	1,679.8	105.7
Bluehill	5090322678	SFP	2	3.6	3.5	0.1	116	594.2	38.0
Bluehill	5090322779	SFP	2	8.4	5.7	-	123	1,993.7	100.3
Bluehill	5090323431	SFP	2	14.9	11.3	0.4	122	3,776.7	177.1
Bluehill	5090323434	SFP	2	17.9	0.7	0.6	99	2,880.7	544.1
Bluehill	5090323466	SFP	2	11.3	0.4	0.3	97	1,870.1	211.8
Bluehill	5090323473	SFP	2	6.5	2.0	0.5	102	801.5	224.0
Bluehill	5090323492	SFP	2	4.3	0.5	0.5	86	664.0	39.6
Bluehill	5090323525	SFP	2	16.3	1.7	1.5	94	2,764.0	171.8
Bluehill	5090323536	SFP	2	60.2	3.6	1.6	103	10,138.1	902.1
Bluehill	5090323551	SFP	2	5.2	5.0	0.1	139	1,218.2	60.1
Bluehill	5090323571	SFP	2	3.5	3.3	-	90	553.0	35.1

Block Information

Compartment	Opening Number	Operator	Pass	Area	Passive Area	Non Forested Area	Average Age	Coniferous Volume	Deciduous Volume
Bluehill	5090323575	SFP	2	35.3	0.3	0.1	110	6,986.5	469.1
Bluehill	5090323596	SFP	2	8.7	0.9	-	130	1,439.6	101.4
Bluehill	5090323635	SFP	2	6.6	0.1	0.1	128	1,047.8	76.1
Bluehill	5090323643	SFP	2	5.0	0.2	-	150	854.4	58.8
Bluehill	5090323651	SFP	2	61.7	6.0	2.5	105	11,717.7	682.6
Bluehill	5090323655	SFP	2	5.8	0.1	-	124	1,054.7	64.0
Bluehill	5090323684	SFP	2	4.3	0.0	-	95	722.1	48.6
Stoney Creek	5080341676	SFP		5.3	1.5	1.4	117	1,174.1	48.0
Stoney Creek	5080341679	SFP		36.0	4.2	3.0	148	10,446.1	415.9
Stoney Creek	5080342087	SFP		11.2	1.8	0.3	135	2,337.1	126.8
Stoney Creek	5080342112	SFP		16.9	2.5	1.1	147	4,931.0	194.3
Stoney Creek	5080342116	SFP		5.3	0.8	0.6	133	1,154.1	57.0
Stoney Creek	5080342118	SFP		12.7	0.8	0.3	154	3,563.6	153.4
Stoney Creek	5080342135	SFP		11.6	3.0	0.8	152	3,518.9	137.9
Stoney Creek	5080342812	SFP	1	5.5	0.4	0.4	135	1,595.5	66.2
Stoney Creek	5080342815	SFP	1	6.3	0.5	0.2	131	1,503.2	257.3
Stoney Creek	5080342842	SFP	1	6.7	0.7	0.7	120	1,783.5	75.8
Stoney Creek	5080342880	SFP		6.5	3.5	1.4	121	1,467.7	153.3
Stoney Creek	5080342918	SFP	1	14.6	2.1	2.1	100	3,074.1	311.7
Stoney Creek	5080342964	SFP	1	9.3	0.7	0.6	110	2,285.1	104.8
Stoney Creek	5080342966	SFP	1	3.4	0.9	0.9	104	795.8	36.0
Stoney Creek	5080342994	SFP	1	27.4	0.7	0.7	135	7,821.2	517.0
Stoney Creek	5080342999	SFP	1	29.7	5.7	3.6	118	6,720.9	325.2
Stoney Creek	5090341091	SFP	1	13.9	0.8	0.8	136	3,171.1	338.1
Stoney Creek	5090341257	SFP	1	8.4	1.2	0.7	146	1,401.7	93.2
Swan Creek	5100361638	SFP	1	21.0	6.9	-	116	5,464.2	247.5
Swan Creek	5100362119	SFP	1	24.7	1.7	0.9	127	6,201.4	521.3
Swan Creek	5100362133	SFP	1	13.4	1.8	0.9	129	3,251.8	158.4
Swan Creek	5100362135	SFP	1	8.3	0.4	0.4	131	2,269.3	174.2
Swan Creek	5100362214	SFP	1	61.5	5.0	2.1	125	14,103.6	2,118.3
Swan Creek	5100362245	SFP	1	11.8	1.2	0.6	111	2,497.6	432.5
Swan Creek	5100362247	SFP	1	20.8	2.0	0.7	117	4,202.4	1,211.4
Swan Creek	5100362359	SFP	1	14.3	1.8	0.7	114	2,747.8	888.5
Swan Creek	5100362447	SFP	1	12.6	3.7	3.2	98	2,538.0	202.7
Swan Creek	5100362452	SFP	1	20.5	2.2	1.4	111	4,387.5	331.2
Swan Creek	5100362478	SFP	1	4.7	0.8	0.8	99	880.1	171.9
Swan Creek	5100362653	SFP	1	18.8	2.4	2.2	113	3,259.9	1,199.0
Swan Creek	5100362716	SFP	1	13.5	1.5	1.0	113	2,570.7	749.4
Swan Creek	5100362759	SFP	1	56.2	7.9	2.9	115	11,617.2	1,677.0
Swan Creek	5100362838	SFP	1	24.9	2.0	0.8	127	6,438.7	318.9
Swan Creek	5100363086	SFP	1	10.3	3.7	-	123	2,694.6	122.4
Swan Creek	5100363291	SFP	1	15.8	1.1	0.5	114	3,626.8	217.4
Swan Creek	5100363322	SFP	1	2.9	0.4	0.2	116	689.3	33.9
Swan Creek	5100363444	SFP	1	10.9	0.9	0.9	109	2,565.8	120.9
Swan Creek	5100363473	SFP	1	17.2	1.7	1.6	106	3,506.5	186.8
Swan Creek	5100363559	SFP	1	39.5	10.5	10.5	110	6,315.1	3,170.9
Swan Creek	5100370124	SFP	1	10.1	0.8	0.8	103	2,121.0	130.5
Swan Creek	5100370186	SFP	1	65.3	3.9	2.9	113	16,061.8	1,191.8
Swan Creek	5100370345	SFP	1	7.8	2.2	0.9	112	1,617.2	85.8
Swan Creek	5100370587	SFP	1	73.0	3.8	1.7	132	20,862.5	884.9
Swan Creek	5100371196	SFP		41.6	6.0	1.2	133	10,677.6	499.3
Swan Creek	5100371435	SFP	1	103.2	5.7	4.9	136	29,439.7	1,242.9
Swan Creek	5100372327	SFP	1	107.9	3.3	2.9	135	30,862.0	1,309.5
Swan Creek	5100372352	SFP	1	71.7	8.3	3.2	133	19,217.1	856.6
Tay River	5090350409	SFP		6.0	0.2	0.2	91	902.4	384.8
Tay River	5090350532	SFP		4.7	0.3	0.3	99	768.2	88.7
Tay River	5090350535	SFP		3.2	0.4	0.2	108	560.3	62.4
Tay River	5090350563	SFP		16.1	0.2	0.2	114	2,872.5	191.8
Tay River	5090350589	SFP		11.2	1.5	0.3	106	1,875.1	651.3
Tay River	5090350827	SFP	2	16.2	0.1	0.0	94	2,700.1	168.8
Tay River	5090350861	SFP		8.5	0.3	0.3	108	1,561.9	383.2
Tay River	5090350942	SFP		9.5	3.3	1.0	101	1,721.7	365.5
Tay River	5090350944	SFP		23.4	1.4	0.4	92	3,212.2	619.5
Tay River	5090350997	SFP	2	6.1	4.5	0.4	107	1,120.6	67.0
Tay River	5090351028	SFP	2	11.1	0.0	0.0	116	2,287.4	131.5
Tay River	5090351543	SFP	2	9.8	0.3	0.3	113	2,002.2	139.9
Tay River	5090351548	SFP	2	19.7	1.1	1.1	112	4,006.4	422.0
Tay River	5090351554	SFP	2	4.8	0.1	0.1	105	859.0	53.1
Tay River	5090351688	SFP	2	12.0	0.5	0.4	103	2,047.2	399.2
Tay River	5090351854	SFP	2	45.2	4.9	0.3	96	8,122.4	471.7
Tay River	5090351881	SFP	2	24.3	1.3	0.4	96	3,778.4	353.7
Tay River	5090351887	SFP	2	42.5	1.6	0.6	104	8,272.2	468.0
Tay River	5090351934	SFP	2	23.3	1.2	0.3	89	3,868.4	344.0
Tay River	5090352021	SFP	2	119.7	11.5	3.7	110	26,054.9	2,014.9
Tay River	5090352109	SFP	2	28.0	4.5	0.8	115	6,968.7	328.2
Tay River	5090352116	SFP	2	7.3	0.4	0.2	106	1,290.8	280.2
Tay River	5090352143	SFP	2	23.4	2.5	0.7	110	4,214.0	264.5
Tay River	5090352177	SFP	2	5.4	0.9	0.0	116	1,135.7	64.1
Tay River	5090352182	SFP	2	6.6	2.2	0.2	94	815.2	472.0
Tay River	5090352194	SFP	2	11.5	8.3	0.1	113	2,487.4	132.2
Tay River	5090352279	SFP	2	8.9	0.6	0.5	116	2,017.1	103.9
Tay River	5090352315	SFP	2	17.7	3.7	1.3	106	3,603.7	190.8
Tay River	5090352583	SFP	2	14.7	3.1	1.3	112	2,691.0	215.9
Tay River	5090352594	SFP	2	10.2	1.1	0.6	122	2,039.9	209.8
Tay River	5090352680	SFP	2	63.1	3.9	2.0	106	11,492.2	824.5
Tay River	5090352746	SFP	2	3.5	0.3	0.2	112	825.9	39.6

Block Information

Compartment	Opening Number	Operator	Pass	Area	Passive Area	Non Forested Area	Average Age	Coniferous Volume	Deciduous Volume
Tay River	5090352757	SFP	2	6.2	0.2	0.2	116	1,559.5	73.7
Tay River	5090352777	SFP	2	10.4	1.6	1.3	109	2,270.2	112.8
Tay River	5090352855	SFP	2	84.5	4.6	2.0	110	17,564.0	1,368.0
Tay River	5090352899	SFP	2	11.4	0.9	0.9	108	2,636.4	124.6
Tay River	5090352974	SFP	2	8.9	0.8	0.3	115	2,053.5	103.7
Tay River	5090353089	SFP	2	15.0	0.6	0.6	98	2,729.9	467.5
Tay River	5090353117	SFP	2	16.9	5.1	1.1	124	4,250.6	194.8
Tay River	5090353183	SFP	2	7.6	0.4	0.4	131	2,085.0	89.8
Tay River	5090353221	SFP	2	7.1	1.0	0.5	103	1,386.4	96.4
Tay River	5090353243	SFP	2	29.7	1.1	0.9	131	7,775.5	622.3
Tay River	5090353327	SFP	2	19.5	0.4	0.4	130	5,317.2	229.7
Tay River	5090353333	SFP	2	5.2	0.2	0.2	116	1,118.8	256.5
Tay River	5090353346	SFP	2	6.7	0.2	0.2	117	1,377.4	70.0
Tay River	5090353363	SFP	2	20.2	1.0	1.0	110	4,633.2	352.0
Tay River	5090353401	SFP	2	6.8	1.0	0.5	109	1,607.1	75.9
Tay River	5090353416	SFP	2	85.2	5.1	5.0	115	19,311.0	1,364.4
Tay River	5090353455	SFP	2	19.7	0.3	0.3	109	4,504.5	217.9
Tay River	5090353597	SFP	2	42.0	6.2	4.0	108	8,215.9	1,304.8
Tay River	5090353639	SFP	2	53.6	8.1	2.9	118	11,001.6	2,180.4
Tay River	5090353665	SFP	2	38.9	1.9	1.0	133	9,674.6	1,092.1
Tay River	5090360323	SFP	2	46.1	7.2	2.9	125	10,269.3	518.0
Tay River	5090360450	SFP	2	5.7	-	-	105	1,180.0	54.1
Tay River	5090360516	SFP	2	6.4	0.4	0.0	131	1,785.2	78.9
Tay River	5090360556	SFP	2	20.2	0.6	0.3	130	5,555.1	335.2
Tay River	5090360593	SFP	2	46.2	0.9	0.8	121	10,911.7	1,248.9
Tay River	5090360628	SFP	2	7.7	0.2	0.2	109	1,620.3	310.1
Tay River	5090360667	SFP	2	15.5	0.2	0.2	122	3,244.8	806.7
Tay River	5090360695	SFP	2	65.8	2.7	2.6	128	15,007.1	2,975.6
Tay River	5090360696	SFP	2	7.8	0.2	0.2	132	1,993.5	276.1
Tay River	5090360712	SFP	2	40.3	1.0	0.6	118	9,291.0	1,517.5
Tay River	5090360726	SFP	2	98.8	3.1	2.7	130	26,509.8	1,288.6
Tay River	5090360887	SFP	2	70.5	3.3	3.1	118	13,964.7	2,608.2
Tay River	5100352419	SFP	2	83.6	4.9	1.7	109	16,822.7	924.1
Tay River	5100352468	SFP	2	15.8	0.3	0.1	103	2,803.6	173.2
Tay River	5100352585	SFP	2	33.0	1.9	0.6	111	7,584.4	378.0
Tay River	5100353317	SFP	2	35.0	4.2	1.1	103	7,696.6	377.9
Tay River	5100353366	SFP	2	13.9	3.6	0.1	95	2,512.1	143.3
Tay River	5100353396	SFP	2	53.0	3.3	0.1	95	10,367.7	545.2
Tay River	5100353466	SFP	2	146.7	10.9	4.4	108	28,837.6	2,646.8
Tay River	5100353566	SFP	2	56.4	5.9	1.5	113	11,569.5	1,934.2
Tay River	5100353637	SFP	2	27.6	4.5	1.2	119	5,931.0	713.6
Tay River	5100353664	SFP	2	46.4	2.3	0.8	112	9,338.5	506.9
Tay River	5100353667	SFP	2	3.0	2.9	0.6	110	475.0	104.2
Tay River	5100360117	SFP	2	15.1	5.8	1.0	117	3,852.2	212.2
Tay River	5100360121	SFP	2	14.3	0.3	0.2	137	3,571.7	350.5
Tay River	5100360149	SFP	2	6.5	0.7	0.0	144	1,722.4	229.6
Tay River	5100360158	SFP	2	2.6	0.0	0.0	124	622.4	30.6
Tay River	5100360162	SFP	2	3.2	0.2	0.2	120	804.3	36.3
Tay River	5100360241	SFP	2	26.2	3.6	2.7	110	3,934.2	2,070.7
Tay River	5100360254	SFP	2	63.8	7.6	1.2	114	13,077.5	3,191.3
Tay River	5100360314	SFP	2	10.2	0.1	-	122	2,134.9	271.8
Tay River	5100360359	SFP	2	20.7	3.1	0.7	119	4,033.3	1,437.5
Tay River	5100360377	SFP	2	83.0	4.8	2.6	121	17,867.1	2,884.2
Tay River	5100360421	SFP	2	22.6	0.2	0.0	145	6,369.3	266.7
Tay River	5100360485	SFP	2	28.0	1.0	0.2	150	7,283.5	502.3
Tay River	5100361017	SFP	2	54.5	2.8	1.2	118	11,021.4	3,803.4
Tay River	5100361068	SFP	2	25.4	2.1	0.0	115	5,361.1	1,086.6
Tay River	5100361162	SFP	2	50.3	1.7	0.9	127	13,375.7	724.5
Tay River	5100361241	SFP	2	17.3	1.0	0.3	143	4,937.6	197.2
Tay River	5100361322	SFP	2	46.7	2.7	1.2	119	9,709.6	2,795.9
Tay River	5100361350	SFP	2	22.7	1.2	0.8	113	4,869.8	829.0
Tay River	5100361415	SFP	2	71.6	3.9	1.7	113	15,519.4	2,872.6
Tay River	5100361436	SFP	2	11.0	0.8	0.2	101	2,371.3	116.4
Tay River	5100361514	SFP	2	13.9	1.4	1.2	106	2,565.0	778.4
Tay River	5100361524	SFP	2	7.6	1.2	-	112	1,354.5	584.4
Tay River	5100361553	SFP	2	14.0	0.9	0.0	109	2,073.2	1,464.5
Tay River	5100361565	SFP	2	8.4	-	-	118	1,030.0	750.6
Tay River	5100361580	SFP	2	31.1	2.4	1.7	111	6,561.4	1,462.7
Teepee Creek	5090331542	SFP	1	37.8	24.3	1.8	82	5,118.3	394.9
Teepee Creek	5090331635	SFP	1	34.3	1.8	0.6	81	4,702.1	434.0
Teepee Creek	5090331685	SFP	1	6.3	0.4	0.2	84	1,036.0	60.9
Teepee Creek	5090331916	SFP	1	79.4	1.8	0.2	85	12,519.8	781.8
Teepee Creek	5090331977	SFP	1	32.5	0.3	-	89	5,013.3	327.5
Teepee Creek	5090332017	SFP	1	61.7	0.9	0.6	88	9,955.0	615.7
Teepee Creek	5090332169	SFP	1	97.4	2.1	-	101	18,879.8	1,059.6
Teepee Creek	5090332211	SFP	1	60.3	0.5	0.5	88	10,192.0	635.4
Teepee Creek	5090332232	SFP	1	84.1	3.0	0.1	94	15,565.3	1,448.8
Teepee Creek	5090332960	SFP	1	49.5	3.7	1.6	84	6,874.2	475.9
Teepee Creek	5090333031	SFP	1	56.4	0.3	0.1	86	8,887.3	558.0
Teepee Creek	5090333069	SFP	1	95.1	0.6	0.3	86	15,199.1	940.9
Teepee Creek	5090333093	SFP	1	62.4	1.5	0.7	91	11,272.8	631.7
Teepee Creek	5090333097	SFP	1	44.8	4.2	0.1	86	7,228.7	442.6
Teepee Creek	5090333125	SFP	1	48.9	4.1	0.5	89	8,079.6	495.1
Teepee Creek	5090333174	SFP	1	64.0	0.6	0.3	86	10,078.1	631.6
Teepee Creek	5090340447	SFP	1	48.9	1.9	1.6	84	7,865.0	478.3
Teepee Creek	5090340487	SFP	1	24.8	3.5	1.8	85	3,260.1	425.6

Block Information

Compartment	Opening Number	Operator	Pass	Area	Passive Area	Non Forested Area	Average Age	Coniferous Volume	Deciduous Volume
Teepee Creek	5090340504	SFP	1	71.8	5.1	0.9	86	11,396.0	708.5
Teepee Creek	5090340579	SFP	1	59.9	0.9	0.9	86	9,641.9	594.2
Teepee Creek	5090340662	SFP	1	86.2	2.9	1.3	85	13,234.8	844.9
Teepee Creek	5090340845	SFP	1	70.8	3.2	2.5	150	11,378.4	684.2
Teepee Creek	5090340894	SFP	1	68.9	2.0	1.1	110	11,425.5	707.8
Teepee Creek	5100332563	SFP	1	85.8	2.1	0.5	86	13,998.3	845.7
Teepee Creek	5100332565	SFP	1	15.8	2.8	-	86	2,537.8	156.8
Teepee Creek	5100332588	SFP	1	66.2	1.1	0.3	86	10,308.6	655.0
Teepee Creek	5100333665	SFP	1	37.0	3.5	0.3	85	6,301.5	363.6
Teepee Creek	5100340133	SFP	1	47.5	1.6	-	86	7,774.1	470.2
Teepee Creek	5100340603	SFP	1	53.0	0.6	-	86	8,660.6	524.5
Upper Lick Creek	5110371311	SFP		6.7	6.7	6.7	116	1,740.6	78.8
Upper Lick Creek	5110372244	SFP		4.9	0.1	0.1	116	1,219.6	58.0
Upper Lick Creek	5110372261	SFP		6.6	0.8	0.1	117	1,665.5	78.0
Upper Lick Creek	5110372275	SFP	1	30.2	3.2	1.3	113	7,413.4	345.1
Upper Lick Creek	5110372291	SFP	1	12.4	2.7	0.8	111	2,966.7	138.7
Upper Tay River	5100360559	SFP	1	100.9	7.8	1.1	110	19,679.9	1,464.5
Upper Tay River	5100360585	SFP	1	55.0	0.4	0.4	97	9,012.7	1,844.9
Upper Tay River	5110361330	SFP	1	45.3	9.1	1.4	106	10,577.1	516.2
Upper Tay River	5110361380	SFP	1	12.6	2.3	0.4	107	2,926.9	144.0
Upper Tay River	5110361443	SFP	1	42.4	5.8	1.2	125	8,293.9	502.9
Upper Tay River	5110361482	SFP	1	32.7	1.7	0.5	109	6,681.5	375.0
Upper Tay River	5110361583	SFP	1	16.5	0.8	0.6	117	3,042.7	189.8
Williams Creek	5080310877	SFP	2	7.8	0.4	0.4	136	2,008.8	95.5
Williams Creek	5080311707	SFP	2	16.4	2.3	0.8	102	3,383.2	229.1
Williams Creek	5080311835	SFP	2	13.2	0.2	0.2	102	2,758.2	338.4
Williams Creek	5080311916	SFP	2	10.3	0.8	0.5	112	2,059.3	110.8
Williams Creek	5080311920	SFP	2	16.2	0.8	0.6	119	3,972.6	200.6
Williams Creek	5080311958	SFP	2	6.6	0.2	0.2	112	1,530.5	70.3
Williams Creek	5080311982	SFP	2	43.8	12.0	1.9	107	8,994.0	545.4
Williams Creek	5080312015	SFP	2	12.4	1.5	0.3	112	2,785.4	142.5
Williams Creek	5080312033	SFP	2	8.0	0.8	0.4	122	2,020.7	94.6
Williams Creek	5080312037	SFP	2	9.1	1.3	0.8	108	2,114.7	98.9
Williams Creek	5080312067	SFP	2	20.9	1.7	1.2	102	4,541.6	234.2
Williams Creek	5080312831	SFP	2	55.3	4.2	1.3	101	11,622.9	593.1
Williams Creek	5080312883	SFP	2	13.2	0.6	0.2	104	3,034.6	146.6
Williams Creek	5080313000	SFP	2	66.3	5.2	0.9	121	15,396.0	781.8
Williams Creek	5080313082	SFP	2	54.2	1.1	0.7	121	14,002.5	630.1
Williams Creek	5080313200	SFP	2	93.7	1.9	0.5	114	21,671.9	1,081.2
Williams Creek	5080313345	SFP	2	31.5	1.4	1.4	103	7,035.2	347.4
Williams Creek	5080313386	SFP	2	7.7	1.7	0.5	101	1,562.8	247.6
Williams Creek	5080313418	SFP	2	43.0	1.6	1.4	109	9,623.2	610.9
Williams Creek	5080320438	SFP	2	17.7	0.7	0.7	104	4,030.2	197.7
Williams Creek	5080320533	SFP	2	18.3	0.8	0.8	99	3,766.7	193.6
Williams Creek	5080320536	SFP	2	13.0	0.6	0.5	102	2,581.7	142.4
Williams Creek	5080320875	SFP	2	51.2	1.5	1.2	105	11,930.9	576.7
Williams Creek	5080321633	SFP	2	68.6	6.3	1.2	105	14,666.4	774.0
Williams Creek	5080321638	SFP	2	19.4	1.0	0.3	95	2,999.4	204.4
Williams Creek	5080321728	SFP	2	5.8	0.8	0.8	111	1,156.8	61.5
Williams Creek	5080321777	SFP	2	24.8	1.7	0.9	94	4,030.6	250.9
Williams Creek	5080321885	SFP	2	34.3	1.9	0.9	96	7,094.9	364.1
Williams Creek	5080322021	SFP	2	5.9	0.5	0.5	115	1,221.0	64.7
Williams Creek	5080322043	SFP	2	17.4	1.3	0.5	91	2,931.3	176.5
Williams Creek	5080322083	SFP	2	56.8	10.5	1.4	100	9,210.3	612.0
Williams Creek	5090311336	SFP	2	42.8	1.8	1.2	124	9,915.6	566.7
Williams Creek	5090311352	SFP	2	6.4	0.7	0.7	119	1,389.2	92.2
Williams Creek	5090311387	SFP	2	57.6	1.1	0.8	123	13,155.1	754.0
Williams Creek	5090311413	SFP	2	22.0	3.1	0.3	123	4,809.0	734.8
Williams Creek	5090311464	SFP	2	2.4	0.6	0.1	129	498.2	52.2
Williams Creek	5090311466	SFP	2	40.1	5.6	1.6	119	8,639.2	595.0
Williams Creek	5090312333	SFP	2	10.6	1.3	0.3	122	2,540.3	280.5
Williams Creek	5090312383	SFP	2	42.1	2.9	0.8	123	9,611.4	601.2
Williams Creek	5090312388	SFP	2	27.6	0.5	0.5	115	6,015.0	316.3
Williams Creek	5090312442	SFP	2	28.9	1.8	0.6	121	6,416.2	359.7
Williams Creek	5090312468	SFP	2	13.8	0.0	0.0	120	2,911.3	253.3
Williams Creek	5090312533	SFP	2	71.1	4.5	3.8	118	16,704.4	805.0
Swale Creek	5150412422	SFP	1	7.2	0.6	0.2	142	1,714.9	83.0
Swale Creek	5150412444	SFP	1	22.5	0.8	0.7	124	4,816.0	262.4
Swale Creek	5150413115	SFP	1	26.5	0.5	0.1	121	6,827.8	308.0
Swale Creek	5150413132	SFP	1	24.4	1.3	0.0	131	5,840.0	288.3
Swale Creek	5150413138	SFP	1	11.1	0.7	0.7	137	3,040.8	128.2
Swale Creek	5150420514	SFP	1	13.5	0.2	0.2	158	3,323.2	156.3
Swale Creek	5150420527	SFP	1	16.9	-	-	141	4,809.6	204.3
Swale Creek	5150420530	SFP	1	39.6	0.1	0.1	126	10,161.1	469.0
Swale Creek	5150420546	SFP	1	16.7	0.2	0.1	133	4,214.2	198.0
Swale Creek	5150420548	SFP	1	2.9	0.6	0.1	136	797.7	32.8
Swale Creek	5150420574	SFP	1	15.0	-	-	162	3,461.4	174.7
Swale Creek	5150420652	SFP	1	45.1	1.8	0.4	124	10,214.5	545.6
Swale Creek	5150420685	SFP	1	15.1	1.8	-	137	4,108.9	186.2
Swale Creek	5150420717	SFP	1	7.6	3.4	1.3	124	1,698.0	89.4
Swale Creek	5150420732	SFP	1	12.9	2.1	0.4	136	3,520.8	164.3
Swale Creek	5150420759	SFP	1	47.4	9.9	1.1	123	10,860.9	558.9
Swale Creek	5150420775	SFP	1	21.8	1.3	0.4	122	5,447.2	255.2
Swale Creek	5150420782	SFP	1	11.4	2.2	0.1	126	2,830.9	131.6
Swale Creek	5150420827	SFP	1	26.3	4.8	0.3	131	5,078.7	311.5
Swale Creek	5150420857	SFP	1	12.2	1.4	0.6	120	2,317.6	144.6

Block Information

Compartment	Opening Number	Operator	Pass	Area	Passive Area	Non Forested Area	Average Age	Coniferous Volume	Deciduous Volume
Swale Creek	5150420869	SFP	1	21.0	3.0	1.9	116	4,979.4	242.7
Swale Creek	5150420884	SFP	1	49.1	4.0	1.9	119	11,487.0	579.9
Swale Creek	5150420933	SFP	1	18.1	1.2	1.2	119	4,021.5	211.0
Swale Creek	5150421754	SFP	1	1.3	0.1	0.1	119	333.0	14.8
Swale Creek	5150421807	SFP	1	12.0	1.6	0.5	120	3,003.0	141.0
Swale Creek	5150421811	SFP	1	45.6	8.9	1.1	130	11,154.6	541.3
Swale Creek	5150421826	SFP	1	5.7	0.1	0.0	124	1,562.1	68.4
Swale Creek	5150423051	SFP	1	28.3	2.3	0.9	131	7,184.6	339.2
Swale Creek	5160412429	SFP	1	79.5	3.7	0.5	135	18,367.1	961.1
Swale Creek	5160412579	SFP	1	87.4	8.1	0.5	136	19,984.9	1,054.2
Swale Creek	5160413474	SFP	1	16.4	0.9	0.9	122	2,800.3	186.5
Swale Creek	5160413614	SFP	1	18.6	1.4	0.4	129	4,681.6	222.0
Swale Creek	5160413635	SFP	1	15.2	1.2	0.6	119	3,549.5	173.8
Swale Creek	5160413657	SFP	1	9.8	0.5	0.4	123	2,297.7	111.6
Swale Creek	5160413673	SFP	1	27.0	0.6	0.5	120	6,523.0	308.9
Swale Creek	5160413698	SFP	1	6.6	1.0	0.4	116	1,589.3	73.8
Swale Creek	5160420111	SFP	1	31.1	3.1	1.2	117	7,148.7	354.3
Swale Creek	5160420139	SFP	1	28.7	3.3	0.9	117	7,353.2	335.2
Swale Creek	5160420146	SFP	1	25.4	1.5	1.0	121	6,523.6	295.6
Swale Creek	5160420151	SFP	1	23.3	3.4	0.1	118	5,440.3	275.1
Swale Creek	5160420197	SFP	1	26.1	1.2	0.1	132	6,761.7	308.3
Swale Creek	5160420263	SFP	1	68.2	1.7	1.0	110	13,141.6	772.5
Swale Creek	5160420355	SFP	1	16.4	0.4	-	117	3,239.1	194.1
Swale Creek	5160420492	SFP	1	7.5	0.0	0.0	107	1,739.7	82.5
Swale Creek	5160420963	SFP	1	35.7	0.3	0.0	98	5,657.8	372.0
Swale Creek	5160421005	SFP	1	42.4	7.3	1.9	103	8,508.8	456.7
Swale Creek	5160421076	SFP	1	47.3	3.5	1.9	112	10,401.9	547.6
Swale Creek	5160421091	SFP	1	80.1	1.1	-	116	18,162.6	936.8
Swale Creek	5160421235	SFP	1	38.8	3.1	0.7	112	9,182.1	441.8
Swale Creek	5160421249	SFP	1	22.0	1.1	0.4	119	4,618.7	254.6
Swale Creek	5160421283	SFP	1	39.8	1.3	0.8	136	10,023.3	474.0
Swale Creek	5160421312	SFP	1	20.4	3.0	0.6	110	4,788.4	227.6
Swale Creek	5160421363	SFP	1	13.7	0.5	-	113	3,050.8	157.1
Swale Creek	5160421395	SFP	1	8.2	0.5	0.3	123	1,900.6	96.0
Swale Creek	5160421451	SFP	1	109.8	7.1	1.8	107	24,211.3	1,251.2
Swale Creek	5160421457	SFP	1	16.0	0.7	0.7	115	3,430.5	181.7
Swale Creek	5160421484	SFP	1	12.3	0.4	0.4	120	2,577.7	142.1
Swale Creek	5160421505	SFP	1	97.8	1.6	1.6	121	24,462.4	1,151.8
Swale Creek	5160421570	SFP	1	43.9	2.1	1.9	112	9,412.4	503.2
Swale Creek	5160421578	SFP	1	25.8	0.8	0.4	104	5,583.2	286.4
Swale Creek	5160421594	SFP	1	11.1	-	-	105	2,520.1	122.5
Swale Creek	5160422116	SFP	1	71.4	4.4	1.3	113	15,942.9	830.5
Swale Creek	5160422158	SFP	1	40.9	3.2	0.0	122	9,781.1	483.9
Swale Creek	5160422206	SFP	1	25.4	2.7	-	105	5,864.5	284.7
Swale Creek	5160422241	SFP	1	31.5	1.0	0.5	105	7,367.8	357.8
Swale Creek	5160422322	SFP	1	24.9	2.4	1.3	133	4,841.1	292.1
Swale Creek	5160422415	SFP	1	30.4	2.8	2.5	107	6,530.9	345.2
Swale Creek	5160422474	SFP	1	68.6	1.6	0.9	116	16,602.8	805.8
Swale Creek	5160422637	SFP	1	26.0	1.5	1.5	106	5,967.8	287.9

APPENDIX 3 DATA DICTIONARY

Filename: SHS_v10
 File Type: Arc/Info coverage
 No of Records: 149,694
 Projection: UTM 11
 Datum: NAD 83
 Note:

Arc/Info Coverage Field name	Data Type	Width	# Decimals	DESCRIPTION
Area	float	8		5 Polygon Area (m2)
Perimeter	float	8		5 Polygon Perimeter (m)
SHS_v10#	binary	4		ArcInfo Polygon ID
SHS_v10-id	binary	4		ArcInfo Polygon ID
OVL_ID	Integer	8		Land base classification link
Forestkey	Integer	16		AVI Polygon Identifier
PolyId	Character	50		Block Number
Theme1	Character	50		Sustained Yield Unit (R10, R10U)
Theme2	Character	50		Compartment Identifier (See Documentation Appendix 1)
Theme3	Character	50		Landbase code 0 = Non-Forested 1 = Coniferous 2 = Deciduous 4 = Coniferous - Deciduous Overstorey with C, CD, DC, Understorey (B,C,D density) 5 = Deciduous - Deciduous Overstorey with C, CD, DC, Understorey (A density) 6 = Coniferous Cutover
Theme4	Character	50		Landbase Deletion Code 99 = AAC
Theme5	Character	50		Dominant species group PL0, PL1, PL2, PL3 = Pine Sw/FB0, SW/FB1, SW/FB2, SW/FB3 = White Spruce, Engelmann Spruce, Balsam Fir, Alpine Fir Sb/Lt0, SB/Lt2, SB/Lt3 = Black Spruce or Larch Dec0, Dec2, Dec3 = Aspen, Balsam Poplar, Birch
Theme6	Character	50		Yield Class (1 to 20)
Theme7	Character	50		Status (ST - standing timber, RT- regenerating timber)
Age	Integer	8		Current Stand Age (0 - 316)
AgeClass	Integer	8		Current Stand Age Class (0 - 310)
CoverGro	Character	20		Covergroup (C, CD, DC, D)
CutPeriod	binary	4		Period of Harvest (10 Year) - 1,2 or 3
Action	binary	4		10 Action applied to the polygon (1 = Coniferous Harvest, 2 = Deciduous Harvest)
AreaHa	float	8		5 Polygon area in hectares
Operator	Character	50		Operator to harvest polygon SFP - Sundre Forest Products RWP - Rocky Wood Preservers MCLN - Mclean CTPN, CTPS - CTPP North GRAY - Gray CTPS - Sundre CTPP
HarvConif	float	8		5 Estimated Coniferous Harvest (m3/ha) at 15/11
HarvDecid	float	8		5 Estimated Deciduous Harvest (m3/ha) at 15/11
HarvAge	Integer	8		Stand Harvest age (Yrs)
PHarvConif	float	8		5 Estimated Polygon Coniferous Harvest (m3) at 15/11
PHarvDecid	float	8		5 Estimated Polygon Deciduous Harvest (m3) at 15/11
LBDeletion	float	8		10 Initial Land base Classification code 1 = Non Forested 2 = Oil and Gas 3 = Trails and Seismic 4 = Protected Areas 5 = Inoperable Slope 6 = Riparian 7 = Productivity 9 = Inaccessible 10 = Unharvested Burn 11 = Reforestation Liability Waived 13 = Non R10 FMU 99 = AAC 991 = AAC including Yarding areas 992 = Fair Site Pine
LBAge	float	8		10 Stand age (Yrs) define in original land base classification (0 - 316)
LBAgeClass	float	8		10 Stand age Class (Yrs) define in original land base classification (0 - 310)
LBCovergroup	Character	5		Covergroup define in original land base classification (C, CD, DC, D)
LBLandbase	float	8		10 Land base Code define in original land base classification (0 to 7)
LBStatus	Character	2		Polygon Status define in original land base classification (ST, RT)

APPENDIX 4 SIGNOFF LETTER

July 22, 2009

Sundre Forest Products Ltd.
Hwy 584 West, Bag #1
Sundre, Alberta
T0M 1X0

Attn: Bob Held, Timber Supply Analyst

Subject: Sundre Forest Products Ltd. Spatial Harvest Sequence Amendment 2009

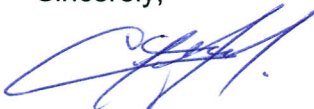
Thank you for your submission of the amended spatial harvest sequence. We have completed our review of the MTU component of the amended sequence, excluding the proposed sequence in the Rocky Wood Preserver Ltd. quota sphere. Based on the spatial data that we have provided to you, including any existing Final Harvest Plans (FHP), and Preliminary Harvest Plans (PHP), we are confident that the sequence represents the planned harvest activities to April 30, 2011. Variance to the SHS should be little to none for the duration of this period for both the CCTP and small quota (Strachan Forest Products Ltd, Lone Pine Financial Corporation, V & O Investments Ltd., Franklin V. and Dorothy Gray, Robert J. McLean and McLean Forest Products Ltd.) programs.

Also sequenced are the openings that are a priority for harvest during the first cut period (2010-2019) of the new SHS scheduled for 2011. This gives us confidence that the future SHS will address the needs of both the CCTP and small quota programs in the Clearwater Area.

Although this sequence does show a longevity of a maximum of 4.8 years for the CCTP program and 9.3 years for the small quota program (which exceeds the duration of this amendment), we are confident, based on long term PHP's submitted to Sundre Forest Products Ltd, and the companies commitment to developing a SHS for areas where no plans currently exist, that the 2011 SHS will satisfactorily represent the full 20 years worth of sequenced volume that is required for our programs.

We look forward to continuing the development of the CCTP and small quota sequence for the 2011 SHS revision.

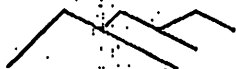
Sincerely,



Chad Gardeski, RPFT
Forester
Clearwater Area

cc: Vicky Bosse, Lead Forest Planner/Performance Monitor, FMB





ROCKY WOOD PRESERVERS LTD.

p.o. box 1537
rocky mountain house
alberta t4t 1b2
phone 403 845-2212
fax 403 845-2595

email rwpaand@usplanet.net

May 1, 2009

Via FAX (403-638-4507; 1 page)

Robert Held
Sundre Forest Products
P. O. Box 1
Sundre, Alberta
T0M 1X0

RE: Spatial Sequence Amendment (April 30, 2009)

Rocky Wood Preservers Ltd. has reviewed the referenced document. Information pertaining to this company's proposal for SHS amendment is consistent with our discussions. I personally thank both Sundre Forest Products and yourself for the assistance provided throughout the process.

Yours truly,

Rocky Wood Preservers Ltd.


Paul King