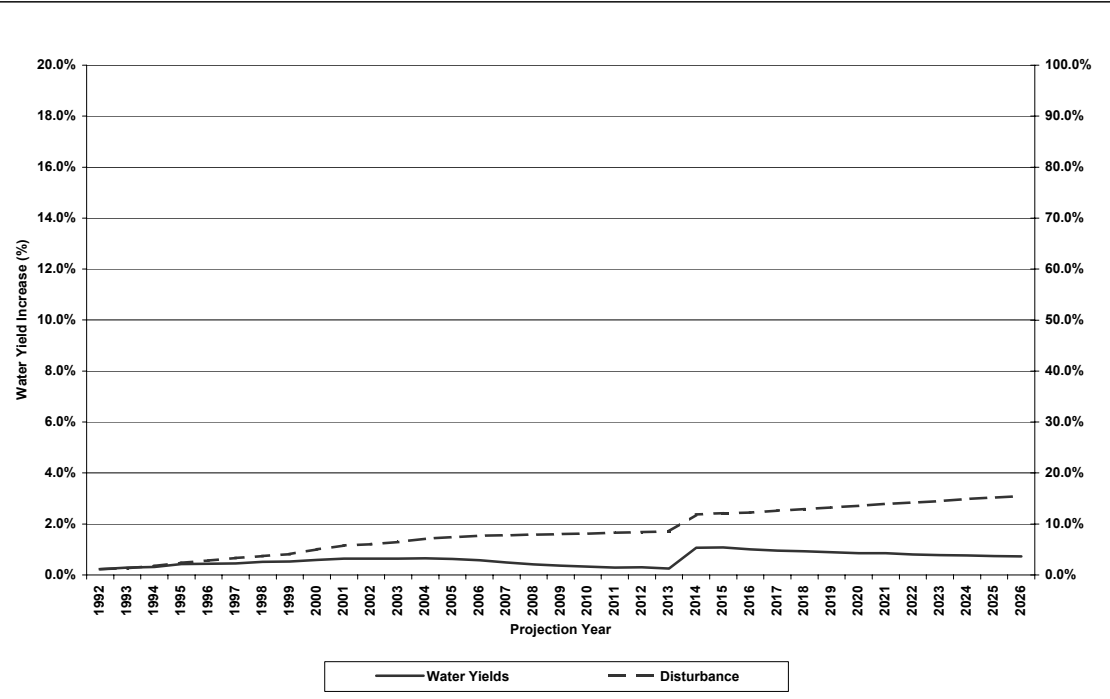

Appendix 9 Water Yield Modelling Output

Baptiste River

Watershed: Baptiste River
 Base Precipitation: 597
 Base Water Yields: 294
 WaterShed Area: 52,821.6

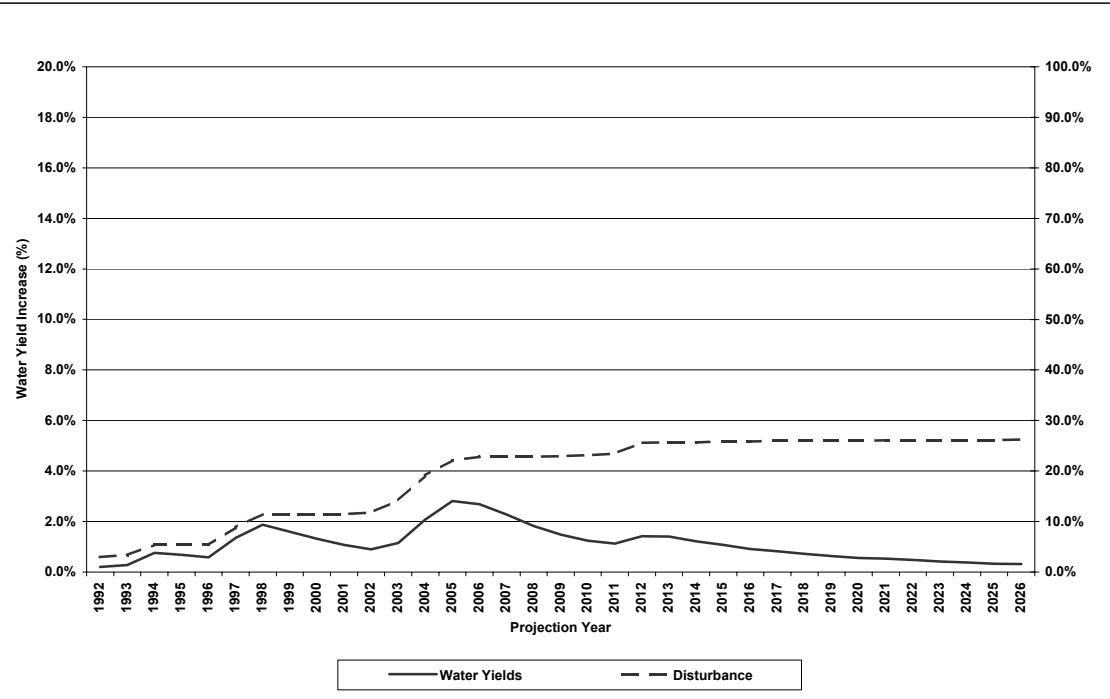
Year	Disturbance		ECA		Water Yields	
	Area	%	Area	%	Increase	%
1992	603	1.1%	468	0.9%	0.7	0.2%
1993	708	1.3%	612	1.2%	0.8	0.3%
1994	942	1.8%	689	1.3%	0.9	0.3%
1995	1,266	2.4%	927	1.8%	1.2	0.4%
1996	1,504	2.8%	988	1.9%	1.3	0.4%
1997	1,753	3.3%	1,055	2.0%	1.3	0.5%
1998	1,969	3.7%	1,218	2.3%	1.5	0.5%
1999	2,168	4.1%	1,276	2.4%	1.5	0.5%
2000	2,649	5.0%	1,436	2.7%	1.7	0.6%
2001	3,054	5.8%	1,584	3.0%	1.9	0.6%
2002	3,195	6.0%	1,650	3.1%	1.9	0.6%
2003	3,424	6.5%	1,686	3.2%	1.9	0.6%
2004	3,753	7.1%	1,748	3.3%	1.9	0.7%
2005	3,905	7.4%	1,710	3.2%	1.9	0.6%
2006	4,069	7.7%	1,563	3.0%	1.7	0.6%
2007	4,124	7.8%	1,385	2.6%	1.4	0.5%
2008	4,176	7.9%	1,217	2.3%	1.2	0.4%
2009	4,241	8.0%	1,089	2.1%	1.1	0.4%
2010	4,293	8.1%	994	1.9%	1.0	0.3%
2011	4,374	8.3%	900	1.7%	0.9	0.3%
2012	4,456	8.4%	894	1.7%	0.9	0.3%
2013	4,513	8.5%	797	1.5%	0.8	0.3%
2014	6,270	11.9%	2,278	4.3%	3.1	1.1%
2015	6,388	12.1%	2,347	4.4%	3.2	1.1%
2016	6,451	12.2%	2,240	4.2%	2.9	1.0%
2017	6,681	12.6%	2,190	4.1%	2.8	1.0%
2018	6,844	13.0%	2,146	4.1%	2.7	0.9%
2019	7,009	13.3%	2,102	4.0%	2.6	0.9%
2020	7,146	13.5%	2,065	3.9%	2.5	0.9%
2021	7,365	13.9%	2,080	3.9%	2.5	0.9%
2022	7,506	14.2%	2,016	3.8%	2.4	0.8%
2023	7,654	14.5%	1,970	3.7%	2.3	0.8%
2024	7,862	14.9%	1,976	3.7%	2.3	0.8%
2025	8,020	15.2%	1,942	3.7%	2.2	0.7%
2026	8,179	15.5%	1,911	3.6%	2.1	0.7%



Burnt Timber Creek

Watershed: Burnt Timber Creek
 Base Precipitation: 597
 Base Water Yields: 294
 WaterShed Area: 6,970.8

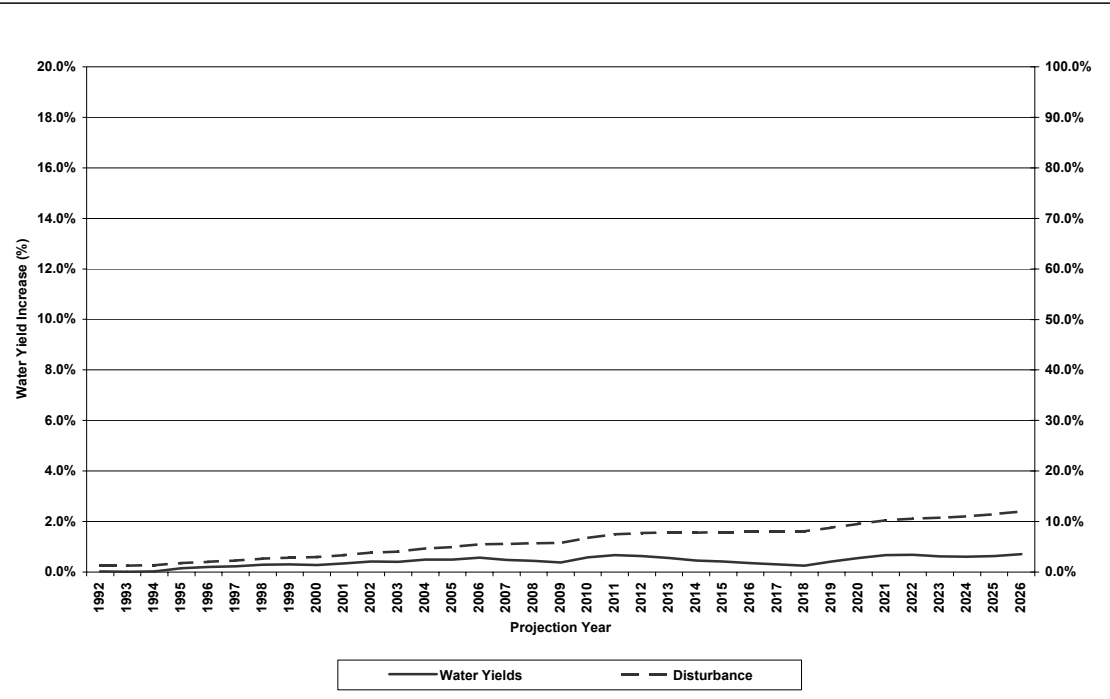
Year	Disturbance		ECA		Water Yields	
	Area	%	Area	%	Increase	%
1992	206	2.9%	62	0.9%	0.6	0.2%
1993	232	3.3%	83	1.2%	0.8	0.3%
1994	376	5.4%	208	3.0%	2.2	0.8%
1995	376	5.4%	203	2.9%	2.0	0.7%
1996	376	5.4%	187	2.7%	1.7	0.6%
1997	616	8.8%	389	5.6%	4.0	1.4%
1998	799	11.5%	538	7.7%	5.5	1.9%
1999	799	11.5%	497	7.1%	4.7	1.6%
2000	799	11.5%	451	6.5%	3.9	1.3%
2001	799	11.5%	402	5.8%	3.2	1.1%
2002	822	11.8%	366	5.2%	2.6	0.9%
2003	988	14.2%	431	6.2%	3.4	1.2%
2004	1,332	19.1%	666	9.6%	6.1	2.1%
2005	1,539	22.1%	872	12.5%	8.3	2.8%
2006	1,587	22.8%	865	12.4%	7.9	2.7%
2007	1,587	22.8%	776	11.1%	6.7	2.3%
2008	1,588	22.8%	659	9.4%	5.4	1.8%
2009	1,598	22.9%	555	8.0%	4.4	1.5%
2010	1,612	23.1%	477	6.8%	3.6	1.2%
2011	1,632	23.4%	440	6.3%	3.3	1.1%
2012	1,784	25.6%	501	7.2%	4.2	1.4%
2013	1,789	25.7%	501	7.2%	4.1	1.4%
2014	1,789	25.7%	452	6.5%	3.6	1.2%
2015	1,799	25.8%	414	5.9%	3.2	1.1%
2016	1,799	25.8%	369	5.3%	2.7	0.9%
2017	1,810	26.0%	338	4.8%	2.4	0.8%
2018	1,810	26.0%	301	4.3%	2.1	0.7%
2019	1,810	26.0%	269	3.9%	1.9	0.6%
2020	1,810	26.0%	242	3.5%	1.6	0.6%
2021	1,821	26.1%	230	3.3%	1.6	0.5%
2022	1,821	26.1%	210	3.0%	1.4	0.5%
2023	1,821	26.1%	193	2.8%	1.2	0.4%
2024	1,821	26.1%	177	2.5%	1.1	0.4%
2025	1,821	26.1%	165	2.4%	1.0	0.3%
2026	1,826	26.2%	155	2.2%	0.9	0.3%



Clearwater River

Watershed: Clearwater River
 Base Precipitation: 597
 Base Water Yields: 294
 WaterShed Area: 101,903.9

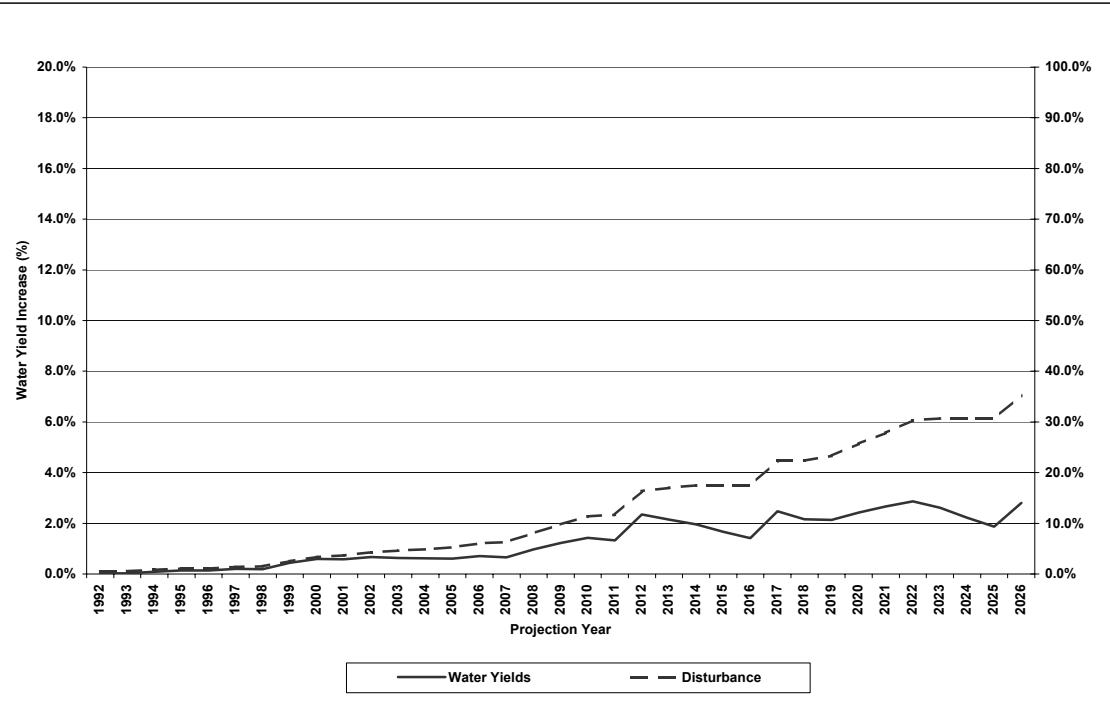
Year	Disturbance		ECA		Water Yields	
	Area	%	Area	%	Increase	%
1992	1,265	1.2%	149	0.1%	0.1	0.0%
1993	1,265	1.2%	122	0.1%	-	0.0%
1994	1,327	1.3%	156	0.2%	0.1	0.0%
1995	1,828	1.8%	609	0.6%	0.4	0.2%
1996	2,084	2.0%	811	0.8%	0.6	0.2%
1997	2,299	2.3%	954	0.9%	0.7	0.2%
1998	2,683	2.6%	1,241	1.2%	0.9	0.3%
1999	2,924	2.9%	1,354	1.3%	0.9	0.3%
2000	3,044	3.0%	1,339	1.3%	0.8	0.3%
2001	3,429	3.4%	1,595	1.6%	1.0	0.3%
2002	3,921	3.8%	1,916	1.9%	1.2	0.4%
2003	4,154	4.1%	1,953	1.9%	1.2	0.4%
2004	4,746	4.7%	2,320	2.3%	1.4	0.5%
2005	5,056	5.0%	2,393	2.3%	1.5	0.5%
2006	5,644	5.5%	2,716	2.7%	1.7	0.6%
2007	5,666	5.6%	2,475	2.4%	1.4	0.5%
2008	5,812	5.7%	2,346	2.3%	1.3	0.4%
2009	5,871	5.8%	2,138	2.1%	1.1	0.4%
2010	6,923	6.8%	2,868	2.8%	1.7	0.6%
2011	7,586	7.4%	3,209	3.1%	2.0	0.7%
2012	7,854	7.7%	3,134	3.1%	1.9	0.6%
2013	7,946	7.8%	2,895	2.8%	1.6	0.6%
2014	7,946	7.8%	2,573	2.5%	1.4	0.5%
2015	8,073	7.9%	2,384	2.3%	1.2	0.4%
2016	8,114	8.0%	2,128	2.1%	1.0	0.4%
2017	8,183	8.0%	1,918	1.9%	0.9	0.3%
2018	8,184	8.0%	1,672	1.6%	0.7	0.3%
2019	8,990	8.8%	2,222	2.2%	1.2	0.4%
2020	9,718	9.5%	2,691	2.6%	1.6	0.6%
2021	10,469	10.3%	3,147	3.1%	2.0	0.7%
2022	10,809	10.6%	3,214	3.2%	2.0	0.7%
2023	10,946	10.7%	3,041	3.0%	1.8	0.6%
2024	11,216	11.0%	3,026	3.0%	1.8	0.6%
2025	11,680	11.5%	3,171	3.1%	1.9	0.6%
2026	12,262	12.0%	3,447	3.4%	2.1	0.7%



James River

Watershed: James River
 Base Precipitation: 597
 Base Water Yields: 294
 WaterShed Area: 66,791.9

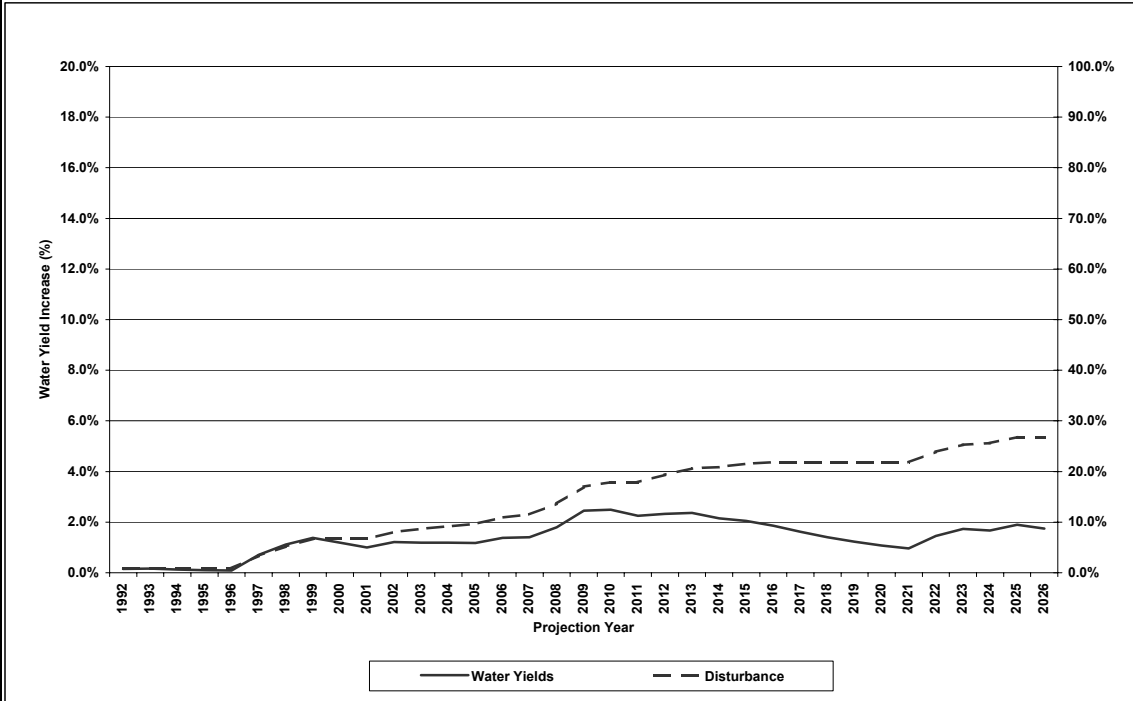
Year	Disturbance		ECA		Water Yields	
	Area	%	Area	%	Increase	%
1992	363	0.5%	102	0.2%	0.1	0.0%
1993	388	0.6%	113	0.2%	0.1	0.0%
1994	552	0.8%	260	0.4%	0.3	0.1%
1995	701	1.0%	383	0.6%	0.4	0.1%
1996	736	1.1%	388	0.6%	0.4	0.1%
1997	944	1.4%	555	0.8%	0.6	0.2%
1998	1,006	1.5%	572	0.9%	0.6	0.2%
1999	1,703	2.5%	1,190	1.8%	1.3	0.4%
2000	2,251	3.4%	1,616	2.4%	1.8	0.6%
2001	2,429	3.6%	1,656	2.5%	1.7	0.6%
2002	2,884	4.3%	1,959	2.9%	2.0	0.7%
2003	3,059	4.6%	1,958	2.9%	1.9	0.6%
2004	3,253	4.9%	1,991	3.0%	1.8	0.6%
2005	3,517	5.3%	1,999	3.0%	1.8	0.6%
2006	4,039	6.0%	2,280	3.4%	2.1	0.7%
2007	4,202	6.3%	2,197	3.3%	1.9	0.7%
2008	5,408	8.1%	2,975	4.5%	2.8	1.0%
2009	6,517	9.8%	3,678	5.5%	3.6	1.2%
2010	7,603	11.4%	4,266	6.4%	4.2	1.4%
2011	7,815	11.7%	4,151	6.2%	3.9	1.3%
2012	10,942	16.4%	6,643	9.9%	6.9	2.4%
2013	11,358	17.0%	6,318	9.5%	6.3	2.1%
2014	11,664	17.5%	5,996	9.0%	5.7	2.0%
2015	11,692	17.5%	5,413	8.1%	4.9	1.7%
2016	11,701	17.5%	4,846	7.3%	4.1	1.4%
2017	14,923	22.3%	7,353	11.0%	7.3	2.5%
2018	14,923	22.3%	6,733	10.1%	6.4	2.2%
2019	15,570	23.3%	6,724	10.1%	6.3	2.1%
2020	17,141	25.7%	7,498	11.2%	7.1	2.4%
2021	18,590	27.8%	8,177	12.2%	7.8	2.7%
2022	20,224	30.3%	8,807	13.2%	8.4	2.9%
2023	20,491	30.7%	8,374	12.5%	7.7	2.6%
2024	20,491	30.7%	7,557	11.3%	6.5	2.2%
2025	20,491	30.7%	6,731	10.1%	5.5	1.9%
2026	23,592	35.3%	8,889	13.3%	8.2	2.8%



Nordegg River

Watershed: Nordegg River
 Base Precipitation: 597
 Base Water Yields: 294
 WaterShed Area: 30,599.3

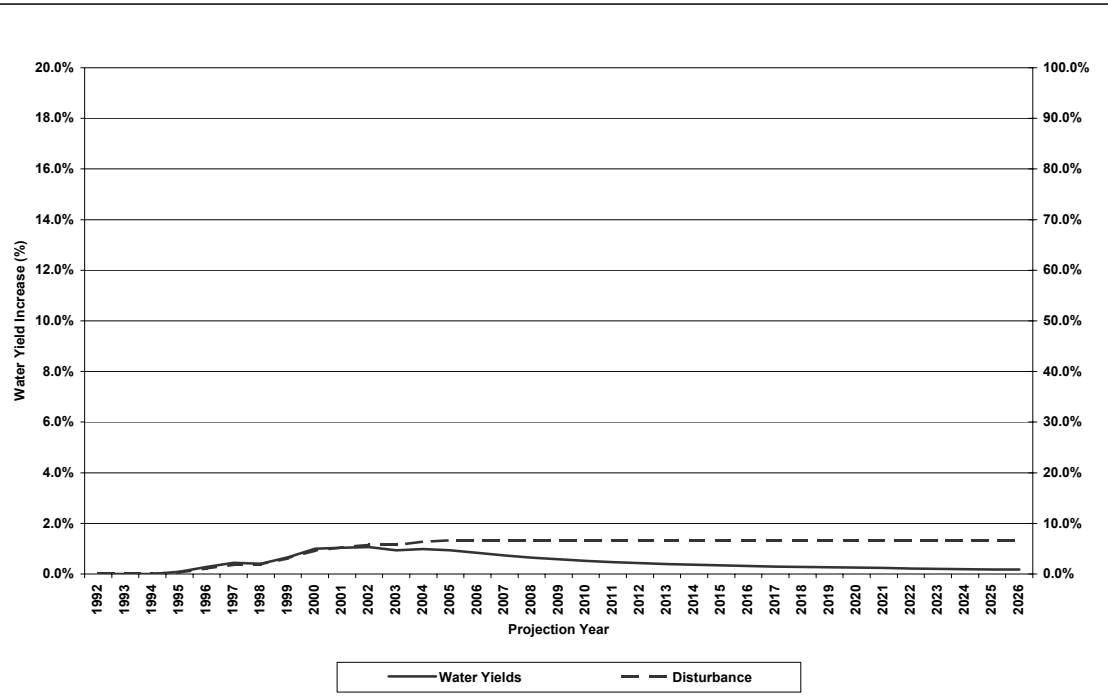
Year	Disturbance		ECA		Water Yields	
	Area	%	Area	%	Increase	%
1992	257	0.8%	180	0.6%	0.4	0.1%
1993	257	0.8%	208	0.7%	0.5	0.2%
1994	257	0.8%	185	0.6%	0.4	0.1%
1995	257	0.8%	155	0.5%	0.3	0.1%
1996	273	0.9%	134	0.4%	0.2	0.1%
1997	1,020	3.3%	818	2.7%	2.1	0.7%
1998	1,581	5.2%	1,300	4.2%	3.3	1.1%
1999	2,058	6.7%	1,671	5.5%	4.0	1.4%
2000	2,058	6.7%	1,551	5.1%	3.5	1.2%
2001	2,058	6.7%	1,420	4.6%	2.9	1.0%
2002	2,473	8.1%	1,689	5.5%	3.6	1.2%
2003	2,644	8.6%	1,711	5.6%	3.5	1.2%
2004	2,808	9.2%	1,727	5.6%	3.5	1.2%
2005	2,968	9.7%	1,731	5.7%	3.5	1.2%
2006	3,343	10.9%	1,946	6.4%	4.1	1.4%
2007	3,527	11.5%	1,978	6.5%	4.1	1.4%
2008	4,177	13.7%	2,401	7.8%	5.3	1.8%
2009	5,194	17.0%	3,142	10.3%	7.2	2.4%
2010	5,481	17.9%	3,265	10.7%	7.3	2.5%
2011	5,481	17.9%	3,073	10.0%	6.6	2.3%
2012	5,910	19.3%	3,206	10.5%	6.8	2.3%
2013	6,297	20.6%	3,296	10.8%	7.0	2.4%
2014	6,388	20.9%	3,105	10.1%	6.3	2.1%
2015	6,601	21.6%	3,040	9.9%	6.0	2.1%
2016	6,668	21.8%	2,855	9.3%	5.4	1.9%
2017	6,668	21.8%	2,611	8.5%	4.7	1.6%
2018	6,668	21.8%	2,376	7.8%	4.1	1.4%
2019	6,668	21.8%	2,162	7.1%	3.6	1.2%
2020	6,668	21.8%	1,965	6.4%	3.2	1.1%
2021	6,668	21.8%	1,791	5.9%	2.8	1.0%
2022	7,312	23.9%	2,269	7.4%	4.3	1.5%
2023	7,745	25.3%	2,531	8.3%	5.1	1.7%
2024	7,839	25.6%	2,453	8.0%	4.9	1.7%
2025	8,202	26.8%	2,685	8.8%	5.6	1.9%
2026	8,202	26.8%	2,542	8.3%	5.1	1.7%



North Ram River

Watershed: North Ram River
 Base Precipitation: 597
 Base Water Yields: 294
 WaterShed Area: 51,715.8

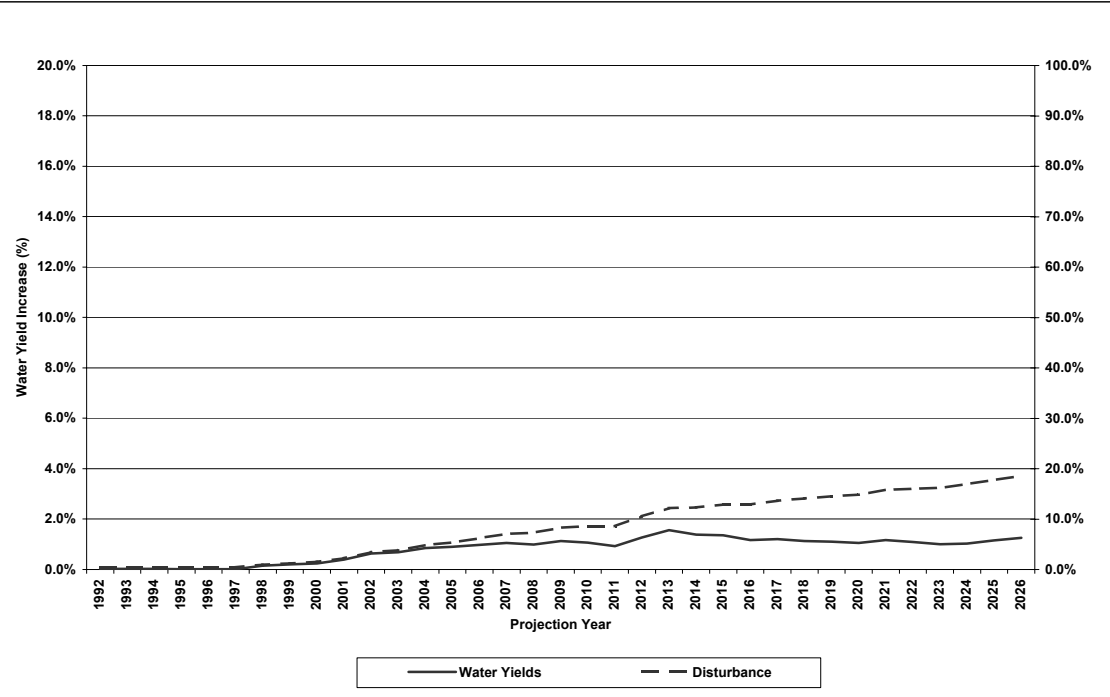
Year	Disturbance		ECA		Water Yields	
	Area	%	Area	%	Increase	%
1992	2	0.0%	0	0.0%	-	0.0%
1993	2	0.0%	0	0.0%	-	0.0%
1994	2	0.0%	0	0.0%	-	0.0%
1995	169	0.3%	160	0.3%	0.3	0.1%
1996	559	1.1%	525	1.0%	0.8	0.3%
1997	956	1.8%	873	1.7%	1.3	0.4%
1998	993	1.9%	851	1.6%	1.2	0.4%
1999	1,600	3.1%	1,368	2.6%	1.9	0.7%
2000	2,401	4.6%	2,050	4.0%	2.9	1.0%
2001	2,701	5.2%	2,208	4.3%	3.0	1.0%
2002	2,981	5.8%	2,330	4.5%	3.1	1.1%
2003	2,981	5.8%	2,163	4.2%	2.7	0.9%
2004	3,293	6.4%	2,298	4.4%	2.9	1.0%
2005	3,433	6.6%	2,256	4.4%	2.8	0.9%
2006	3,433	6.6%	2,076	4.0%	2.4	0.8%
2007	3,433	6.6%	1,901	3.7%	2.2	0.7%
2008	3,433	6.6%	1,734	3.4%	1.9	0.6%
2009	3,433	6.6%	1,576	3.0%	1.7	0.6%
2010	3,433	6.6%	1,429	2.8%	1.5	0.5%
2011	3,433	6.6%	1,297	2.5%	1.4	0.5%
2012	3,433	6.6%	1,183	2.3%	1.3	0.4%
2013	3,433	6.6%	1,081	2.1%	1.1	0.4%
2014	3,433	6.6%	992	1.9%	1.1	0.4%
2015	3,433	6.6%	913	1.8%	1.0	0.3%
2016	3,433	6.6%	848	1.6%	0.9	0.3%
2017	3,433	6.6%	795	1.5%	0.9	0.3%
2018	3,433	6.6%	752	1.5%	0.8	0.3%
2019	3,433	6.6%	715	1.4%	0.8	0.3%
2020	3,433	6.6%	682	1.3%	0.7	0.2%
2021	3,433	6.6%	654	1.3%	0.7	0.2%
2022	3,433	6.6%	628	1.2%	0.6	0.2%
2023	3,433	6.6%	603	1.2%	0.6	0.2%
2024	3,433	6.6%	580	1.1%	0.6	0.2%
2025	3,433	6.6%	560	1.1%	0.5	0.2%
2026	3,433	6.6%	540	1.0%	0.5	0.2%



North Saskatchewan River

Watershed: North Saskatchewan River
 Base Precipitation: 597
 Base Water Yields: 294
 WaterShed Area: 110,168.1

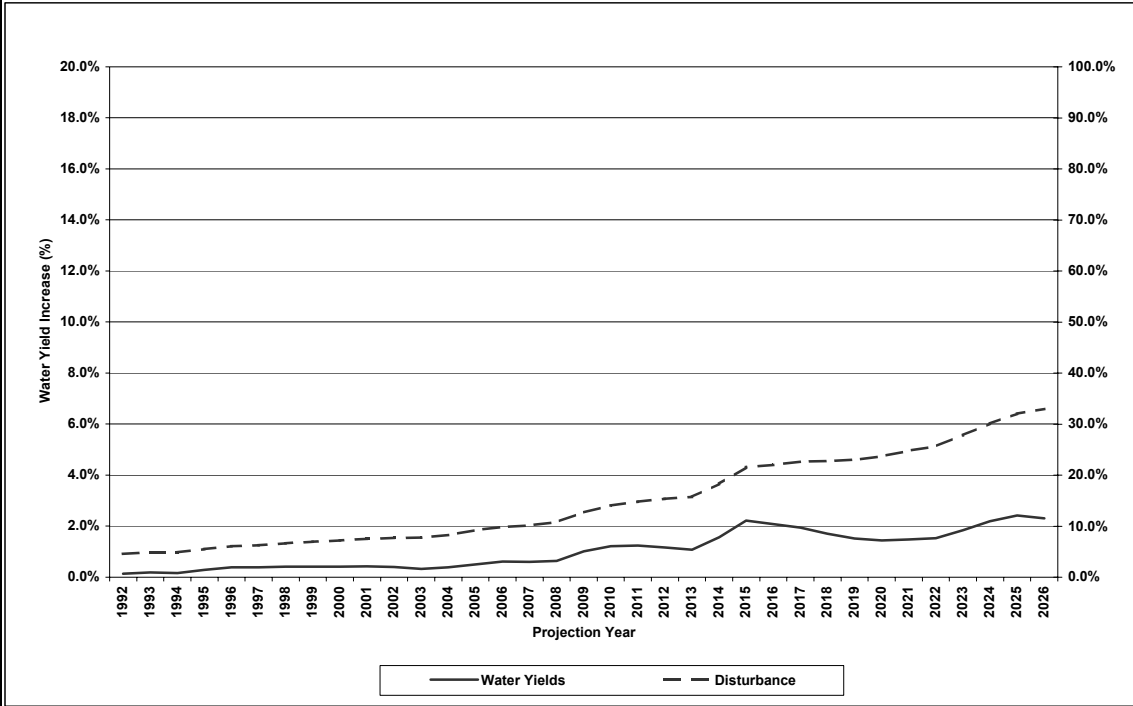
Year	Disturbance		ECA		Water Yields	
	Area	%	Area	%	Increase	%
1992	489	0.4%	144	0.1%	0.1	0.0%
1993	489	0.4%	130	0.1%	0.1	0.0%
1994	489	0.4%	118	0.1%	0.1	0.0%
1995	489	0.4%	106	0.1%	0.1	0.0%
1996	489	0.4%	96	0.1%	-	0.0%
1997	489	0.4%	88	0.1%	-	0.0%
1998	1,060	1.0%	626	0.6%	0.4	0.2%
1999	1,351	1.2%	865	0.8%	0.6	0.2%
2000	1,650	1.5%	1,059	1.0%	0.7	0.2%
2001	2,467	2.2%	1,728	1.6%	1.2	0.4%
2002	3,773	3.4%	2,765	2.5%	1.9	0.6%
2003	4,164	3.8%	3,074	2.8%	2.0	0.7%
2004	5,294	4.8%	3,868	3.5%	2.5	0.9%
2005	5,966	5.4%	4,190	3.8%	2.6	0.9%
2006	6,854	6.2%	4,635	4.2%	2.9	1.0%
2007	7,762	7.0%	5,083	4.6%	3.1	1.1%
2008	8,030	7.3%	4,973	4.5%	2.9	1.0%
2009	9,141	8.3%	5,584	5.1%	3.3	1.1%
2010	9,471	8.6%	5,407	4.9%	3.1	1.1%
2011	9,471	8.6%	4,936	4.5%	2.7	0.9%
2012	11,627	10.6%	6,319	5.7%	3.7	1.3%
2013	13,458	12.2%	7,564	6.9%	4.6	1.6%
2014	13,566	12.3%	7,082	6.4%	4.1	1.4%
2015	14,200	12.9%	7,096	6.4%	4.0	1.4%
2016	14,200	12.9%	6,431	5.8%	3.4	1.2%
2017	15,069	13.7%	6,587	6.0%	3.6	1.2%
2018	15,505	14.1%	6,286	5.7%	3.3	1.1%
2019	15,985	14.5%	6,173	5.6%	3.2	1.1%
2020	16,349	14.8%	5,976	5.4%	3.1	1.0%
2021	17,439	15.8%	6,411	5.8%	3.4	1.2%
2022	17,660	16.0%	6,112	5.5%	3.2	1.1%
2023	17,844	16.2%	5,731	5.2%	3.0	1.0%
2024	18,659	16.9%	5,760	5.2%	3.0	1.0%
2025	19,609	17.8%	6,235	5.7%	3.4	1.2%
2026	20,498	18.6%	6,629	6.0%	3.7	1.3%



Prairie Creek

Watershed: Prairie Creek
 Base Precipitation: 597
 Base Water Yields: 294
 WaterShed Area: 73,241.1

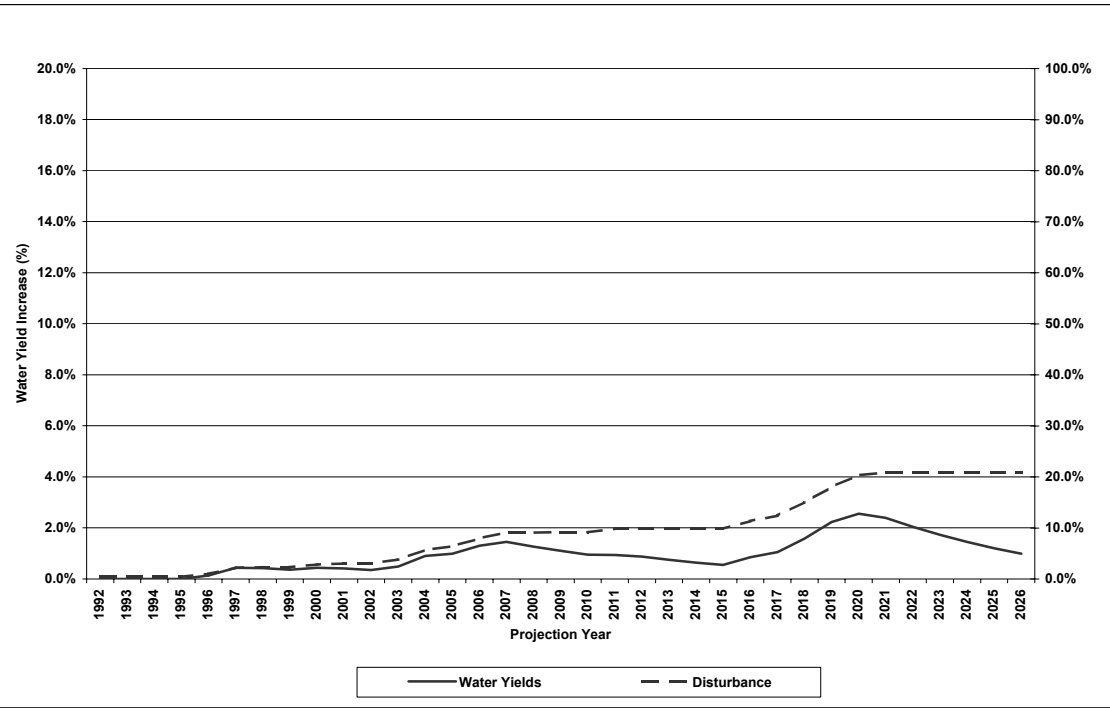
Year	Disturbance		ECA		Water Yields	
	Area	%	Area	%	Increase	%
1992	3,366	4.6%	729	1.0%	0.4	0.1%
1993	3,581	4.9%	824	1.1%	0.6	0.2%
1994	3,602	4.9%	732	1.0%	0.5	0.2%
1995	4,027	5.5%	1,039	1.4%	0.8	0.3%
1996	4,437	6.1%	1,317	1.8%	1.1	0.4%
1997	4,608	6.3%	1,352	1.8%	1.1	0.4%
1998	4,861	6.6%	1,454	2.0%	1.2	0.4%
1999	5,081	6.9%	1,501	2.0%	1.2	0.4%
2000	5,274	7.2%	1,509	2.1%	1.2	0.4%
2001	5,513	7.5%	1,572	2.1%	1.2	0.4%
2002	5,649	7.7%	1,536	2.1%	1.2	0.4%
2003	5,690	7.8%	1,389	1.9%	1.0	0.3%
2004	6,084	8.3%	1,551	2.1%	1.2	0.4%
2005	6,756	9.2%	1,830	2.5%	1.5	0.5%
2006	7,223	9.9%	2,170	3.0%	1.8	0.6%
2007	7,440	10.2%	2,190	3.0%	1.8	0.6%
2008	7,900	10.8%	2,296	3.1%	1.9	0.6%
2009	9,314	12.7%	3,307	4.5%	3.0	1.0%
2010	10,283	14.0%	3,914	5.3%	3.6	1.2%
2011	10,859	14.8%	4,055	5.5%	3.6	1.2%
2012	11,258	15.4%	3,989	5.4%	3.4	1.2%
2013	11,506	15.7%	3,811	5.2%	3.2	1.1%
2014	13,417	18.3%	5,142	7.0%	4.6	1.6%
2015	15,780	21.5%	6,950	9.5%	6.5	2.2%
2016	16,131	22.0%	6,777	9.3%	6.1	2.1%
2017	16,583	22.6%	6,591	9.0%	5.7	1.9%
2018	16,676	22.8%	6,104	8.3%	5.0	1.7%
2019	16,861	23.0%	5,684	7.8%	4.5	1.5%
2020	17,358	23.7%	5,515	7.5%	4.3	1.4%
2021	18,149	24.8%	5,593	7.6%	4.3	1.5%
2022	18,764	25.6%	5,740	7.8%	4.5	1.5%
2023	20,381	27.8%	6,571	9.0%	5.4	1.8%
2024	22,024	30.1%	7,530	10.3%	6.5	2.2%
2025	23,477	32.1%	8,224	11.2%	7.1	2.4%
2026	24,151	33.0%	8,069	11.0%	6.8	2.3%



Ram River

Watershed: Ram River
 Base Precipitation: 597
 Base Water Yields: 294
 WaterShed Area: 26,671.3

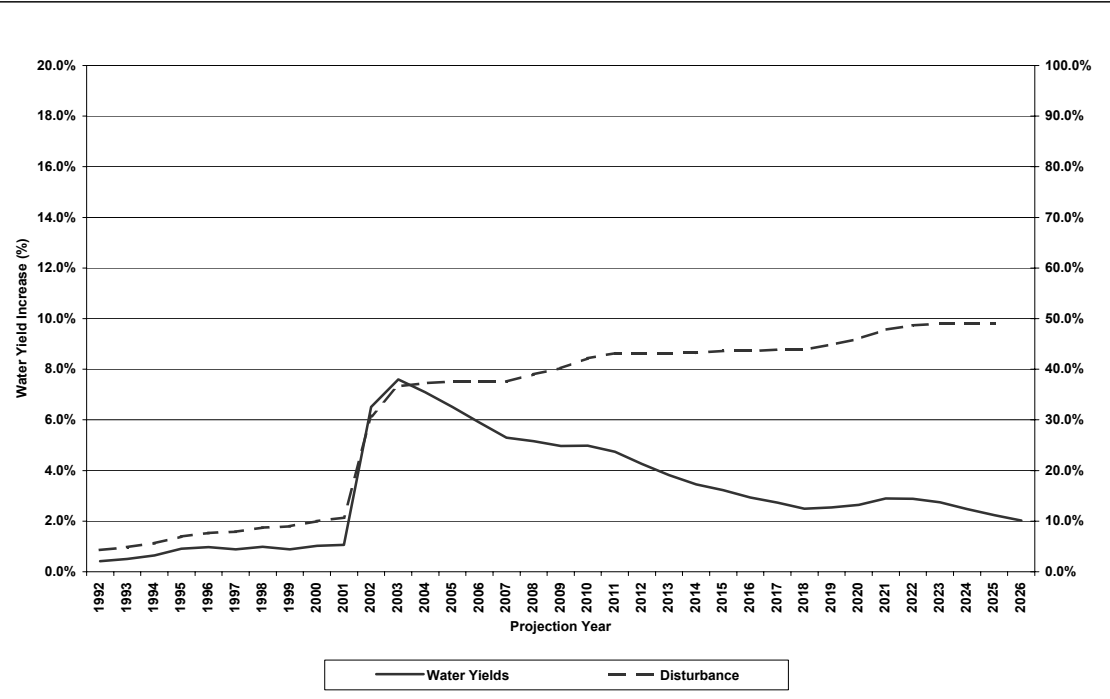
Year	Disturbance		ECA		Water Yields	
	Area	%	Area	%	Increase	%
1992	124	0.5%	17	0.1%	-	0.0%
1993	124	0.5%	13	0.0%	-	0.0%
1994	124	0.5%	11	0.0%	-	0.0%
1995	124	0.5%	10	0.0%	-	0.0%
1996	261	1.0%	138	0.5%	0.4	0.1%
1997	581	2.2%	437	1.6%	1.3	0.4%
1998	620	2.3%	448	1.7%	1.2	0.4%
1999	620	2.3%	416	1.6%	1.1	0.4%
2000	749	2.8%	505	1.9%	1.3	0.4%
2001	802	3.0%	511	1.9%	1.2	0.4%
2002	802	3.0%	464	1.7%	1.0	0.3%
2003	1,014	3.8%	612	2.3%	1.4	0.5%
2004	1,516	5.7%	1,025	3.8%	2.7	0.9%
2005	1,700	6.4%	1,145	4.3%	2.9	1.0%
2006	2,127	8.0%	1,466	5.5%	3.8	1.3%
2007	2,430	9.1%	1,652	6.2%	4.3	1.4%
2008	2,430	9.1%	1,524	5.7%	3.7	1.3%
2009	2,434	9.1%	1,397	5.2%	3.2	1.1%
2010	2,434	9.1%	1,272	4.8%	2.8	1.0%
2011	2,623	9.8%	1,270	4.8%	2.8	0.9%
2012	2,623	9.8%	1,220	4.6%	2.6	0.9%
2013	2,623	9.8%	1,104	4.1%	2.2	0.8%
2014	2,623	9.8%	990	3.7%	1.9	0.6%
2015	2,627	9.8%	881	3.3%	1.6	0.5%
2016	3,024	11.3%	1,138	4.3%	2.5	0.9%
2017	3,317	12.4%	1,328	5.0%	3.1	1.1%
2018	4,006	15.0%	1,842	6.9%	4.6	1.6%
2019	4,813	18.0%	2,508	9.4%	6.6	2.2%
2020	5,421	20.3%	2,910	10.9%	7.5	2.6%
2021	5,575	20.9%	2,853	10.7%	7.0	2.4%
2022	5,575	20.9%	2,622	9.8%	6.0	2.1%
2023	5,575	20.9%	2,384	8.9%	5.1	1.7%
2024	5,575	20.9%	2,159	8.1%	4.3	1.5%
2025	5,575	20.9%	1,935	7.3%	3.5	1.2%
2026	5,575	20.9%	1,726	6.5%	2.9	1.0%



Red Deer River

Watershed: Red Deer River
 Base Precipitation: 597
 Base Water Yields: 294
 WaterShed Area: 39,557.1

Year	Disturbance		ECA		Water Yields	
	Area	%	Area	%	Increase	%
1992	1,710	4.3%	855	2.2%	1.2	0.4%
1993	1,919	4.9%	995	2.5%	1.5	0.5%
1994	2,223	5.6%	1,214	3.1%	1.9	0.6%
1995	2,752	7.0%	1,632	4.1%	2.7	0.9%
1996	3,031	7.7%	1,780	4.5%	2.9	1.0%
1997	3,121	7.9%	1,727	4.4%	2.6	0.9%
1998	3,461	8.7%	1,906	4.8%	2.9	1.0%
1999	3,541	9.0%	1,816	4.6%	2.6	0.9%
2000	3,950	10.0%	2,041	5.2%	3.0	1.0%
2001	4,232	10.7%	2,132	5.4%	3.1	1.1%
2002	12,181	30.8%	9,672	24.4%	19.1	6.5%
2003	14,506	36.7%	11,515	29.1%	22.3	7.6%
2004	14,738	37.3%	11,200	28.3%	20.9	7.1%
2005	14,846	37.5%	10,714	27.1%	19.2	6.5%
2006	14,846	37.5%	10,095	25.5%	17.3	5.9%
2007	14,846	37.5%	9,464	23.9%	15.6	5.3%
2008	15,419	39.0%	9,390	23.7%	15.2	5.2%
2009	15,909	40.2%	9,228	23.3%	14.6	5.0%
2010	16,669	42.1%	9,326	23.6%	14.6	5.0%
2011	17,085	43.2%	9,073	22.9%	13.9	4.7%
2012	17,085	43.2%	8,438	21.3%	12.5	4.3%
2013	17,087	43.2%	7,821	19.8%	11.2	3.8%
2014	17,106	43.2%	7,251	18.3%	10.1	3.4%
2015	17,259	43.6%	6,849	17.3%	9.5	3.2%
2016	17,259	43.6%	6,324	16.0%	8.6	2.9%
2017	17,346	43.8%	5,917	15.0%	8.0	2.7%
2018	17,346	43.8%	5,495	13.9%	7.3	2.5%
2019	17,741	44.9%	5,508	13.9%	7.5	2.5%
2020	18,214	46.0%	5,622	14.2%	7.8	2.6%
2021	18,894	47.8%	5,951	15.0%	8.5	2.9%
2022	19,242	48.6%	5,944	15.0%	8.5	2.9%
2023	19,414	49.1%	5,764	14.6%	8.1	2.7%
2024	19,414	49.1%	5,423	13.7%	7.3	2.5%
2025	19,414	49.1%	5,094	12.9%	6.6	2.2%
2026	19,414	49.1%	4,789	12.1%	5.9	2.0%



Raven River

Watershed: Raven River
 Base Precipitation: 597
 Base Water Yields: 294
 WaterShed Area: 16,801.2

Year	Disturbance		ECA		Water Yields	
	Area	%	Area	%	Increase	%
1992	-	0.0%	-	0.0%	-	0.0%
1993	-	0.0%	-	0.0%	-	0.0%
1994	-	0.0%	-	0.0%	-	0.0%
1995	-	0.0%	-	0.0%	-	0.0%
1996	-	0.0%	-	0.0%	-	0.0%
1997	-	0.0%	-	0.0%	-	0.0%
1998	-	0.0%	-	0.0%	-	0.0%
1999	113	0.7%	108	0.6%	0.5	0.2%
2000	354	2.1%	327	1.9%	1.6	0.5%
2001	470	2.8%	411	2.4%	1.9	0.6%
2002	757	4.5%	659	3.9%	3.0	1.0%
2003	943	5.6%	744	4.4%	3.2	1.1%
2004	1,291	7.7%	918	5.5%	3.8	1.3%
2005	1,600	9.5%	1,240	7.4%	5.1	1.7%
2006	1,842	11.0%	1,370	8.2%	5.5	1.9%
2007	1,842	11.0%	1,257	7.5%	4.6	1.6%
2008	2,434	14.5%	1,569	9.3%	6.0	2.0%
2009	3,017	18.0%	1,966	11.7%	7.7	2.6%
2010	3,828	22.8%	2,577	15.3%	10.5	3.6%
2011	4,841	28.8%	3,317	19.7%	13.7	4.7%
2012	5,219	31.1%	3,364	20.0%	13.4	4.6%
2013	5,678	33.8%	3,523	21.0%	13.7	4.7%
2014	5,678	33.8%	3,207	19.1%	11.7	4.0%
2015	5,788	34.4%	2,997	17.8%	10.4	3.5%
2016	6,183	36.8%	3,008	17.9%	10.3	3.5%
2017	6,260	37.3%	2,818	16.8%	9.2	3.1%
2018	7,326	43.6%	3,431	20.4%	12.2	4.1%
2019	7,344	43.7%	3,199	19.0%	10.8	3.7%
2020	7,595	45.2%	3,067	18.3%	10.1	3.4%
2021	8,740	52.0%	3,819	22.7%	13.9	4.7%
2022	8,740	52.0%	3,460	20.6%	12.0	4.1%
2023	8,740	52.0%	3,078	18.3%	10.1	3.4%
2024	9,234	55.0%	3,211	19.1%	10.9	3.7%
2025	9,881	58.8%	3,493	20.8%	12.3	4.2%
2026	10,249	61.0%	3,471	20.7%	12.1	4.1%

