




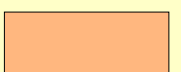


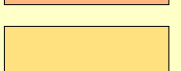
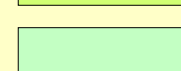


# FMU G13

## Age Class Distribution for the Active and Passive Landscape

January 2005

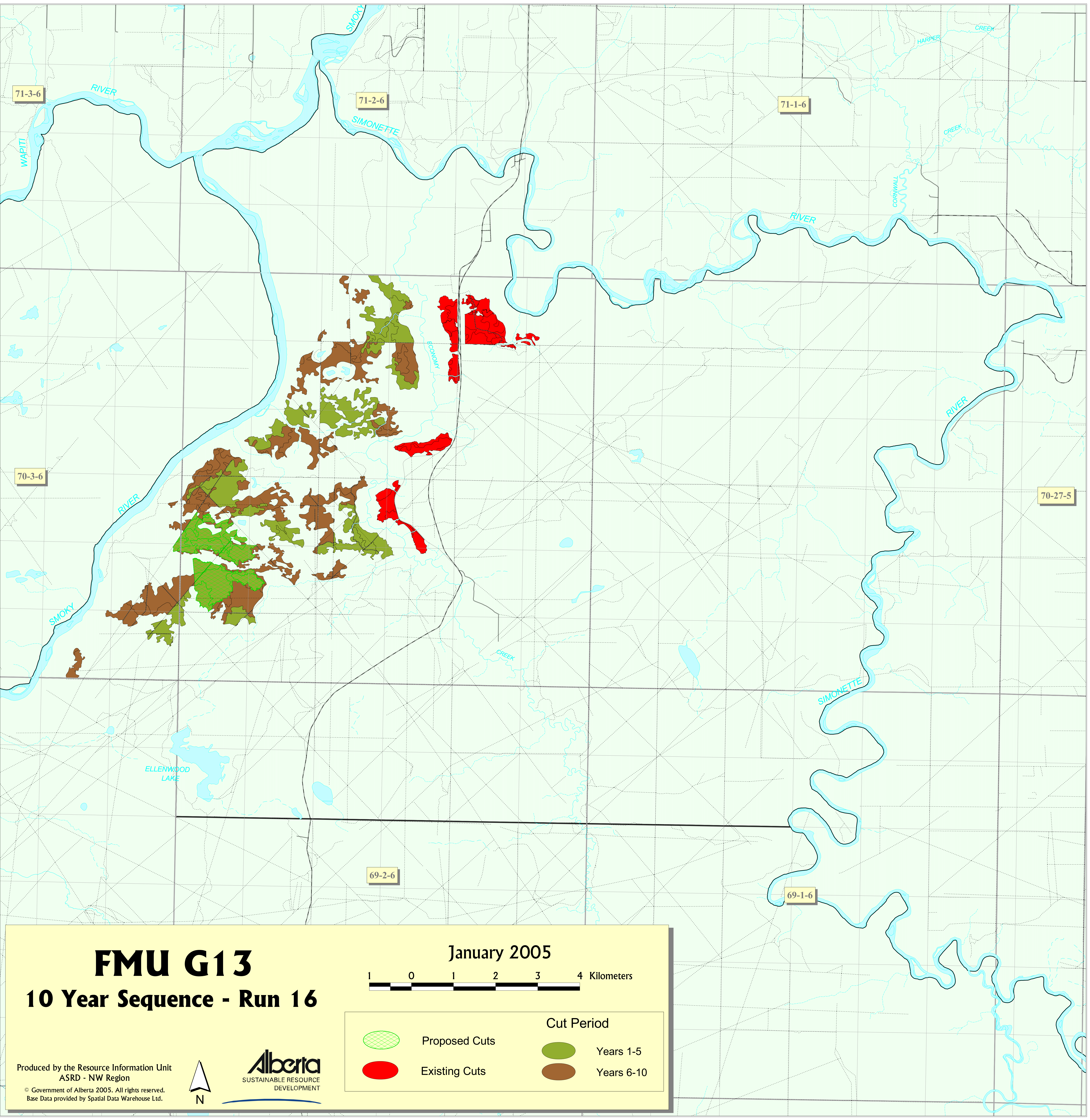


### Year Age Classes

	10-20		70-80		130-140
	30-40		90-100		150-160
	50-60		110-120		170-180
					200 yrs

Produced by the Resource Information Unit, ASRD, NW Region  
 © Government of Alberta 2006. All Rights Reserved.

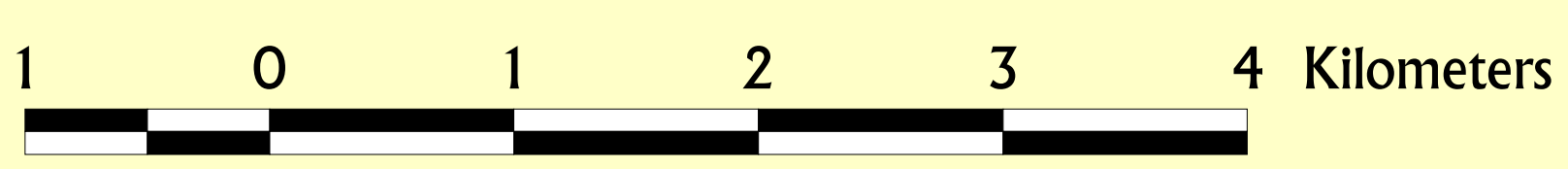




# FMU G13

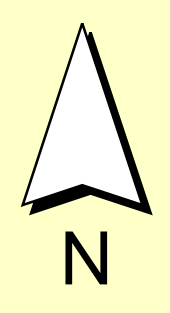
## 10 Year Sequence - Run 16

January 2005

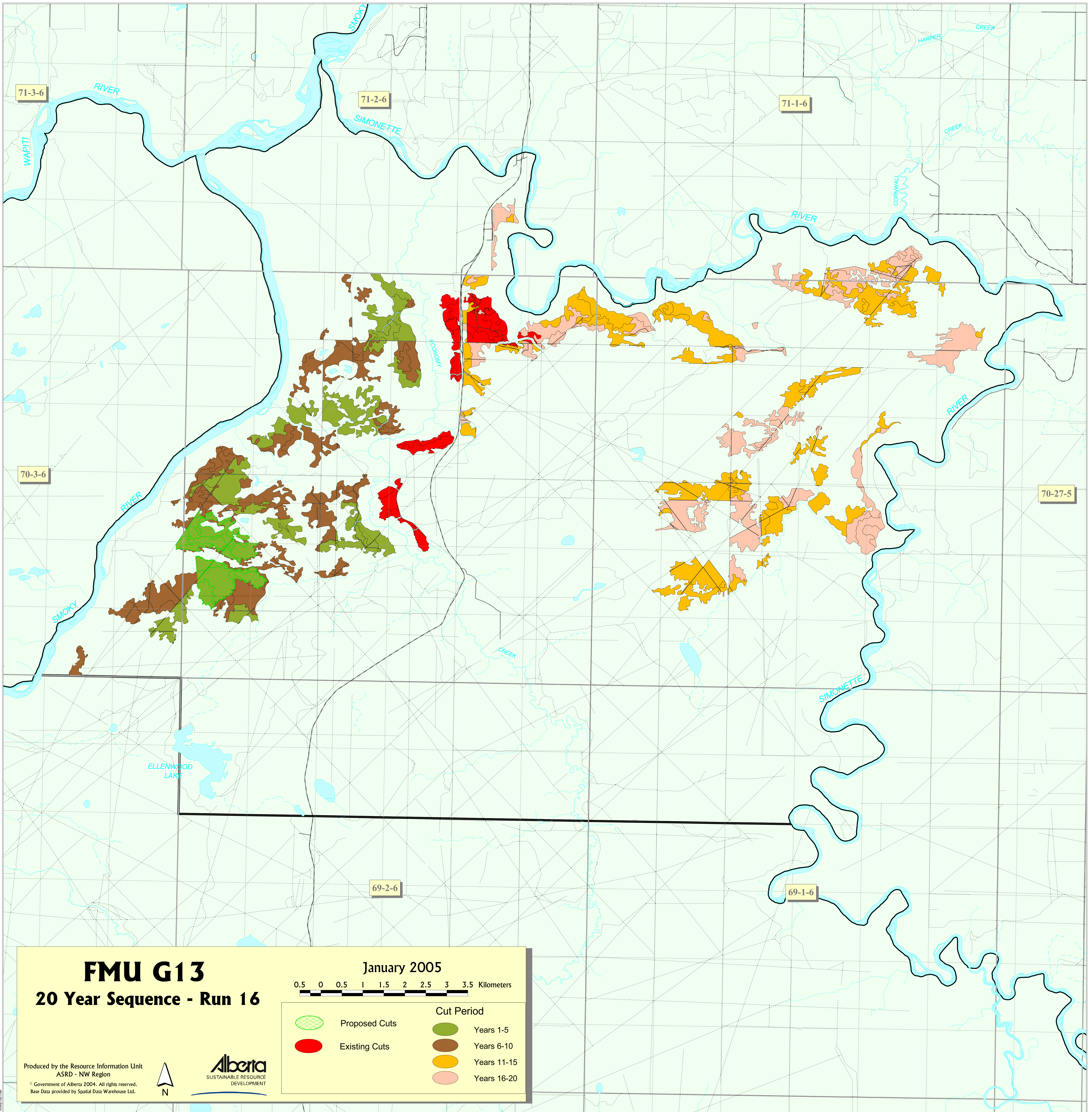


Cut Period	
	Proposed Cuts
	Existing Cuts
	Years 1-5
	Years 6-10

Produced by the Resource Information Unit  
ASRD - NW Region  
© Government of Alberta 2005. All rights reserved.  
Base Data provided by Spatial Data Warehouse Ltd.





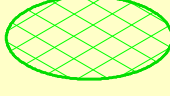

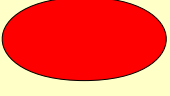





# FMU G13

## 20 Year Sequence - Run 16

January 2005

0.5 0 0.5 1 1.5 2 2.5 3 3.5 Kilometers

- |   |               |  |             |
|---|---------------|--|-------------|
|  | Proposed Cuts |  | Years 1-5   |
|  | Existing Cuts |  | Years 6-10  |
|   |               |  | Years 11-15 |
|   |               |  | Years 16-20 |

Produced by the Resource Information Unit  
ASRD - NW Region  
© Government of Alberta 2004. All rights reserved.  
Base Data provided by Spadal Data Warehouse Ltd.



**Alberta**  
SUSTAINABLE RESOURCE  
DEVELOPMENT