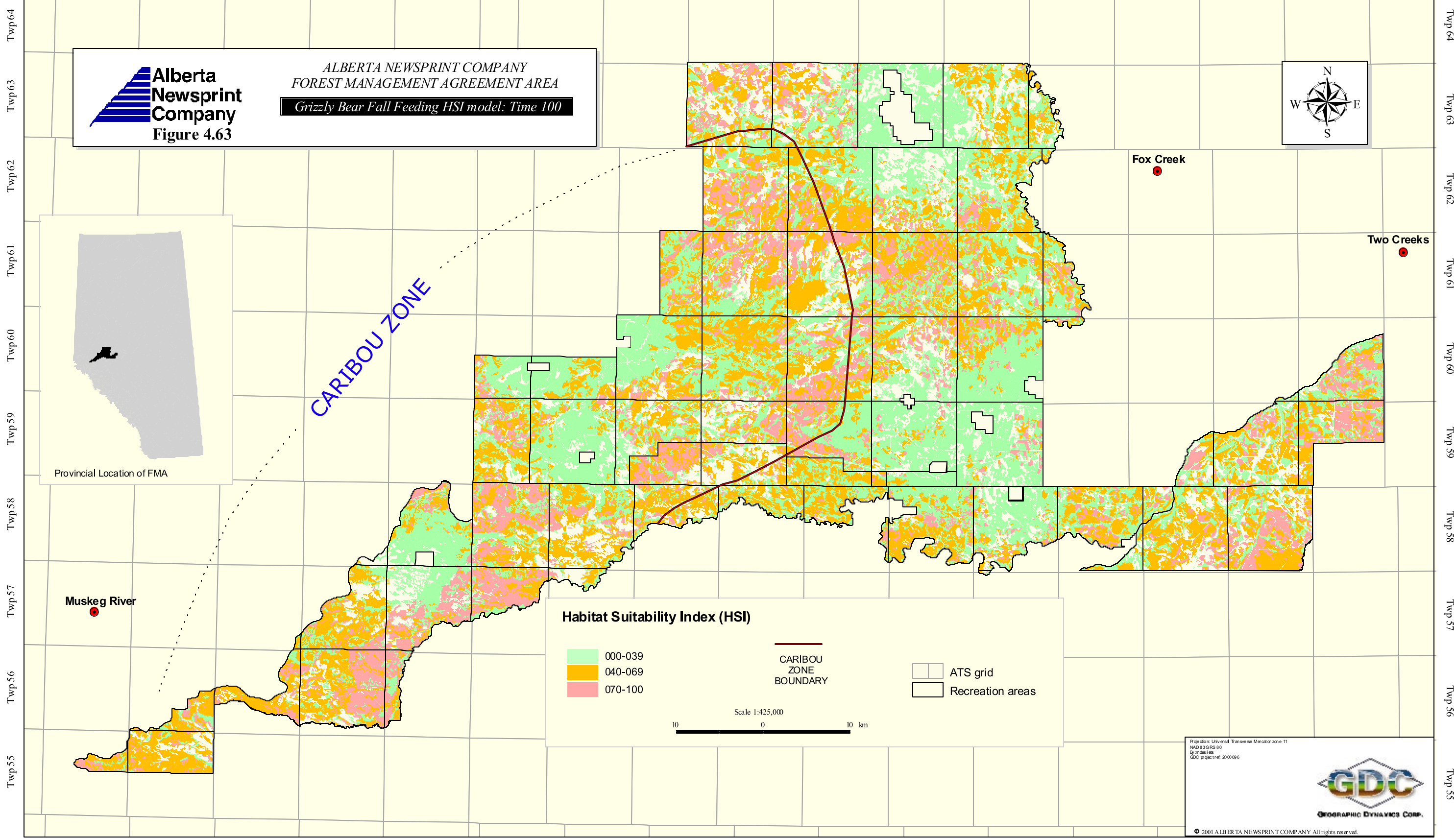
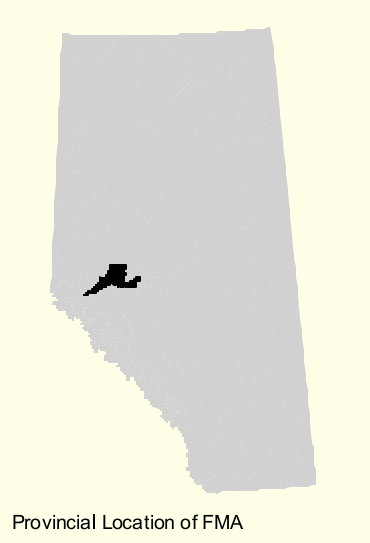
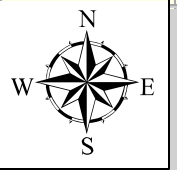


Rge 5 Rge 4 Rge 3 Rge 2 Rge 1 6th MER Rge 27 Rge 26 Rge 25 Rge 24 Rge 23 Rge 22 Rge 21 Rge 20 Rge 19 Rge 18 Rge 17



ALBERTA NEWSPRINT COMPANY  
FOREST MANAGEMENT AGREEMENT AREA  
Grizzly Bear Fall Feeding HSI model: Time 100



Provincial Location of FMA

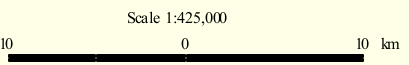
CARIBOU ZONE

Habitat Suitability Index (HSI)

- 000-039
- 040-069
- 070-100

CARIBOU ZONE BOUNDARY

- ATS grid
- Recreation areas



Projection: Universal Transverse Mercator zone 11  
NAD 83 GRS 80  
30 m x 30 m cells  
GDC project ref: 2000086

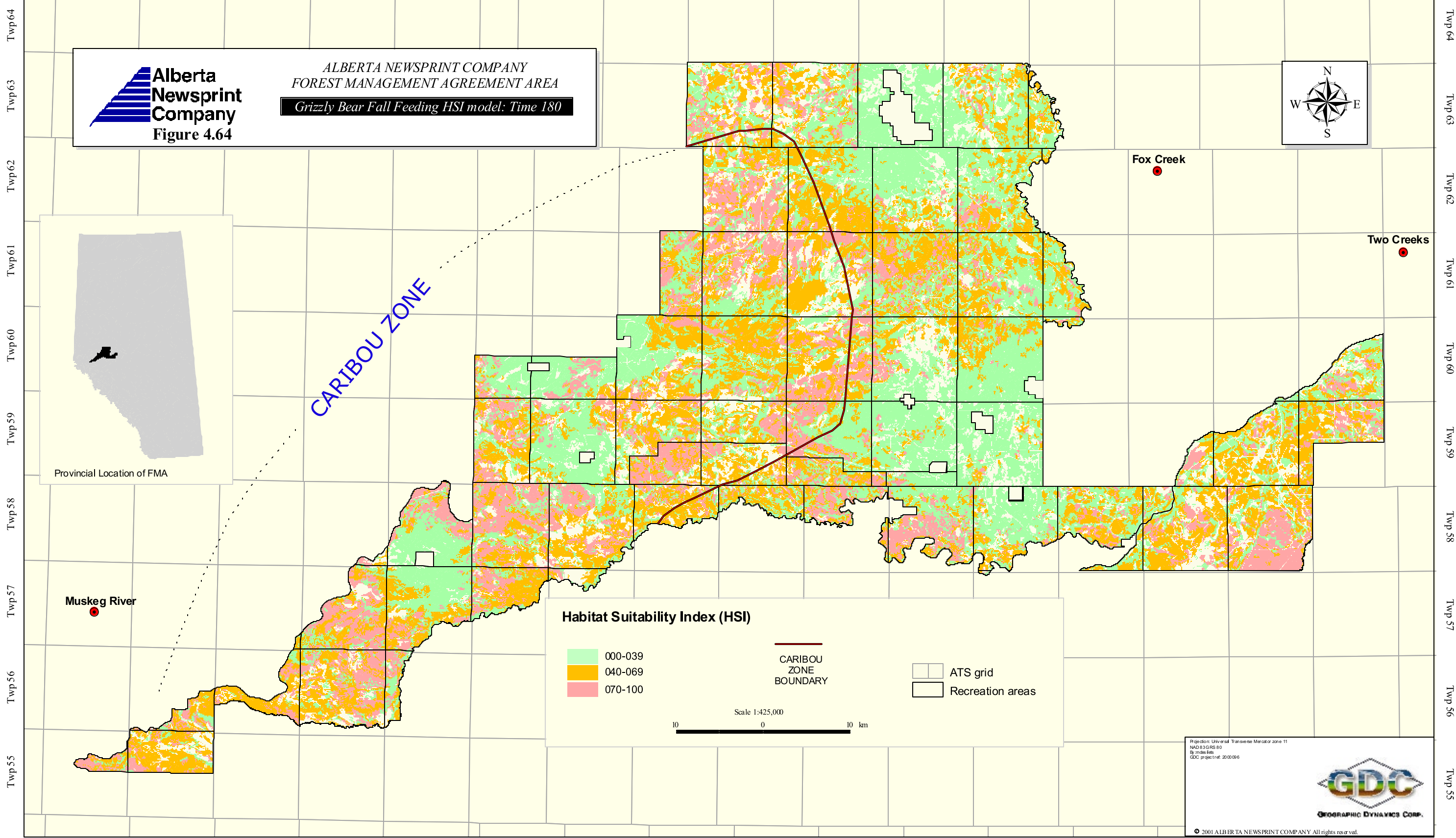


© 2001 ALBERTA NEWSPRINT COMPANY All rights reserved.

Rge 5 Rge 4 Rge 3 Rge 2 Rge 1 6th MER Rge 27 Rge 26 Rge 25 Rge 24 Rge 23 Rge 22 Rge 21 Rge 20 Rge 19 Rge 18 Rge 17

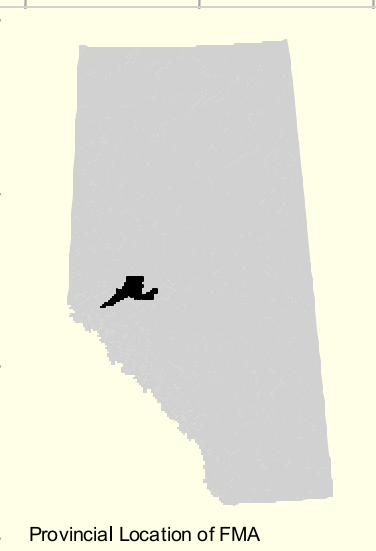
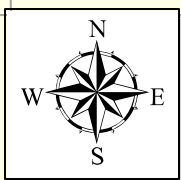
Twp 64  
Twp 63  
Twp 62  
Twp 61  
Twp 60  
Twp 59  
Twp 58  
Twp 57  
Twp 56  
Twp 55

Rge 5 Rge 4 Rge 3 Rge 2 Rge 1 6th MER Rge 27 Rge 26 Rge 25 Rge 24 Rge 23 Rge 22 Rge 21 Rge 20 Rge 19 Rge 18 Rge 17



**Alberta Newsprint Company**  
**Figure 4.64**

ALBERTA NEWSPRINT COMPANY  
 FOREST MANAGEMENT AGREEMENT AREA  
 Grizzly Bear Fall Feeding HSI model: Time 180



CARIBOU ZONE

**Habitat Suitability Index (HSI)**

	000-039		CARIBOU ZONE BOUNDARY		ATS grid
	040-069		Recreation areas		
	070-100				

Scale 1:425,000  
 10 0 10 km

Projection: Universal Transverse Mercator zone 11  
 NAD 83 GRS 80  
 3° cross-tie  
 GDC project ref: 200008

**GDC**  
 GEOGRAPHIC DYNAMICS CORP.

© 2001 ALBERTA NEWSPRINT COMPANY All rights reserved.

Rge 5 Rge 4 Rge 3 Rge 2 Rge 1 6th MER Rge 27 Rge 26 Rge 25 Rge 24 Rge 23 Rge 22 Rge 21 Rge 20 Rge 19 Rge 18 Rge 17

Twp 64  
Twp 63  
Twp 62  
Twp 61  
Twp 60  
Twp 59  
Twp 58  
Twp 57  
Twp 56  
Twp 55

Twp 64  
Twp 63  
Twp 62  
Twp 61  
Twp 60  
Twp 59  
Twp 58  
Twp 57  
Twp 56  
Twp 55