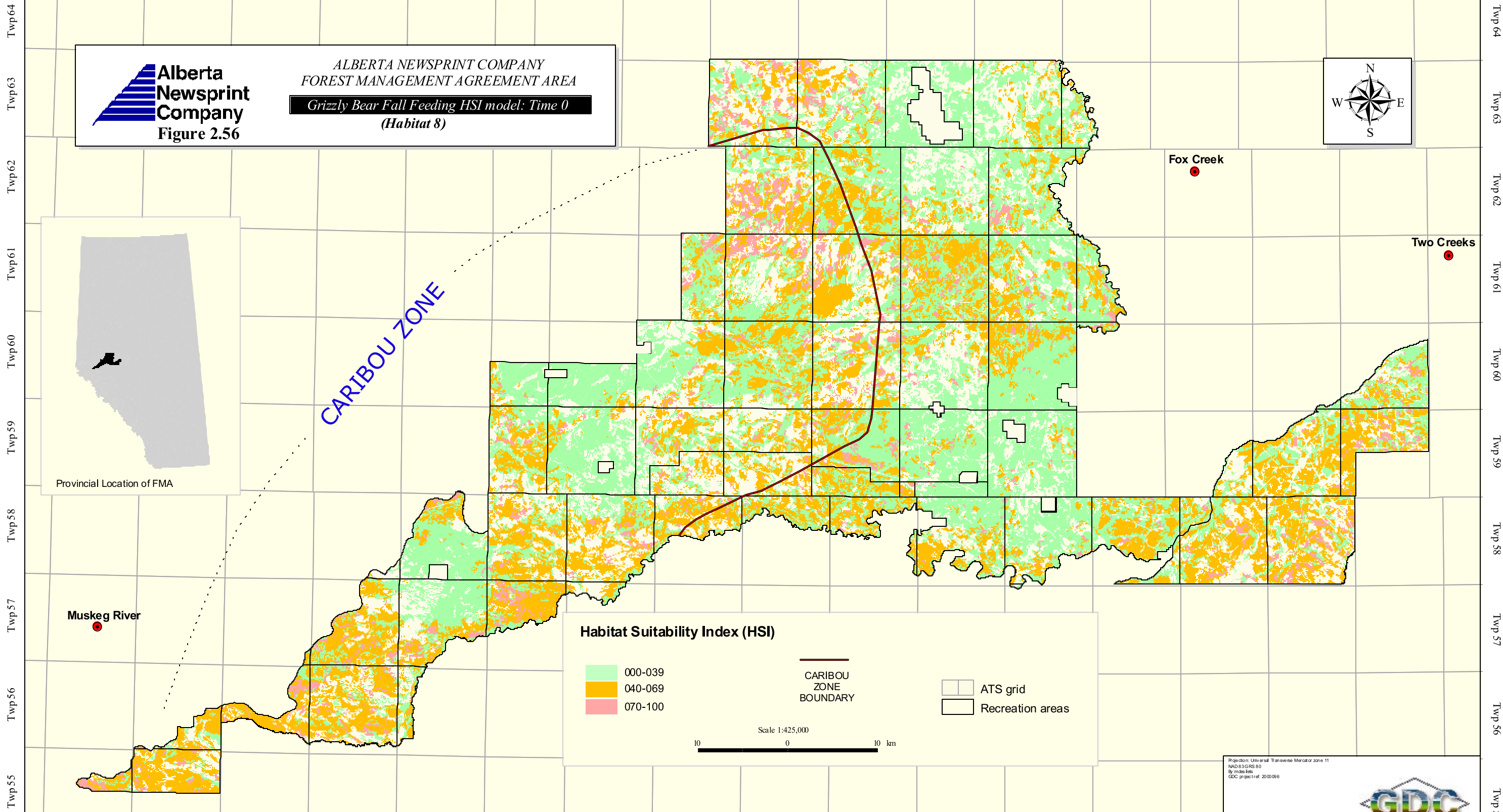
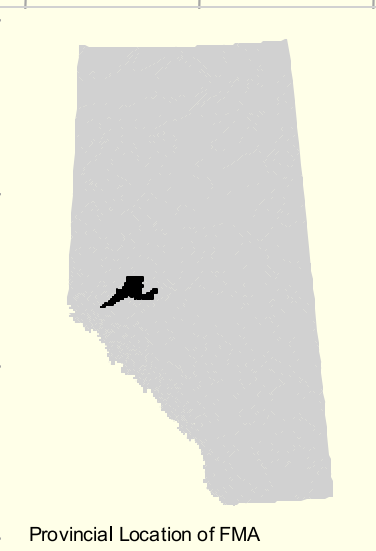
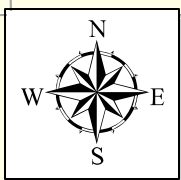


Rge 5 Rge 4 Rge 3 Rge 2 Rge 1 6th MER Rge 27 Rge 26 Rge 25 Rge 24 Rge 23 Rge 22 Rge 21 Rge 20 Rge 19 Rge 18 Rge 17



Alberta Newsprint Company
Figure 2.56

ALBERTA NEWSPRINT COMPANY
 FOREST MANAGEMENT AGREEMENT AREA
 Grizzly Bear Fall Feeding HSI model: Time 0
 (Habitat 8)



CARIBOU ZONE

Fox Creek

Two Creeks

Muskeg River

Habitat Suitability Index (HSI)

	000-039		CARIBOU ZONE BOUNDARY		ATS grid
	040-069		Recreation areas		
	070-100				

Scale 1:425,000

10 0 10 km

Projection: Universal Transverse Mercator zone 11
 NAD 83 GRS 80
 30 m x 30 m cells
 GDC project ref: 2000086

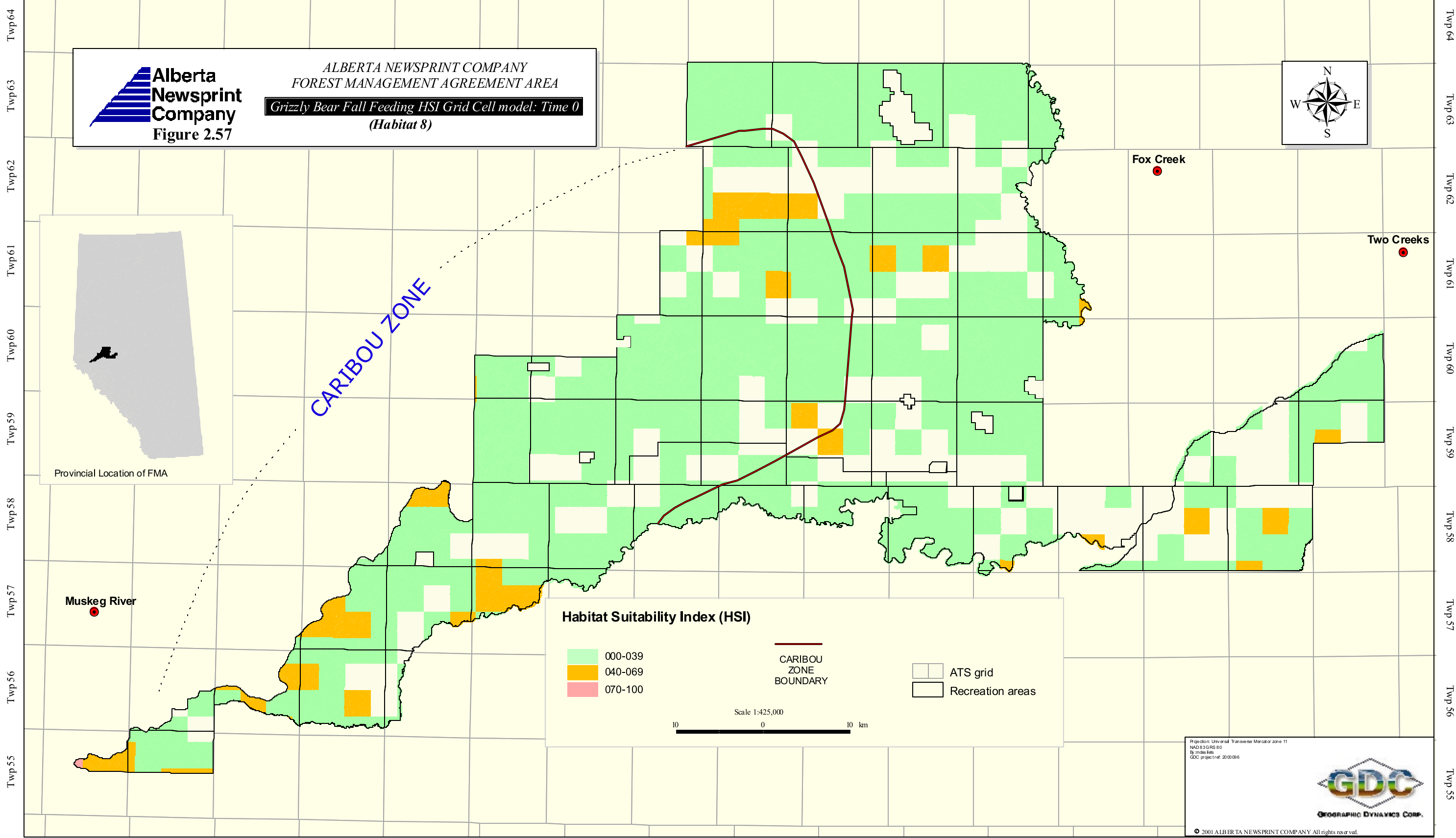


© 2001 ALBERTA NEWSPRINT COMPANY All rights reserved.

Rge 5 Rge 4 Rge 3 Rge 2 Rge 1 6th MER Rge 27 Rge 26 Rge 25 Rge 24 Rge 23 Rge 22 Rge 21 Rge 20 Rge 19 Rge 18 Rge 17

Twp 55 Twp 56 Twp 57 Twp 58 Twp 59 Twp 60 Twp 61 Twp 62 Twp 63 Twp 64

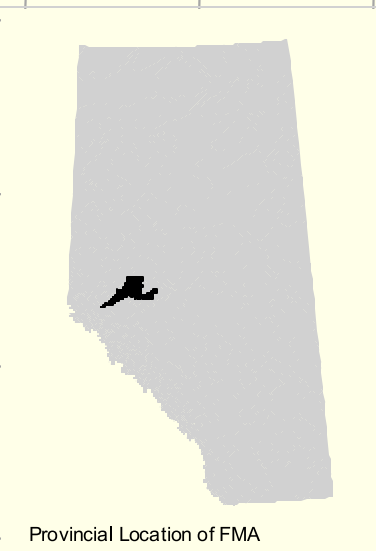
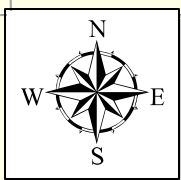
Rge 5 Rge 4 Rge 3 Rge 2 Rge 1 6th MER Rge 27 Rge 26 Rge 25 Rge 24 Rge 23 Rge 22 Rge 21 Rge 20 Rge 19 Rge 18 Rge 17



Alberta Newsprint Company
Figure 2.57

ALBERTA NEWSPRINT COMPANY
 FOREST MANAGEMENT AGREEMENT AREA

Grizzly Bear Fall Feeding HSI Grid Cell model: Time 0
 (Habitat 8)



CARIBOU ZONE

Habitat Suitability Index (HSI)

	000-039
	040-069
	070-100

— CARIBOU ZONE BOUNDARY

ATS grid

Recreation areas

Scale 1:425,000

10 0 10 km

Projection: Universal Transverse Mercator zone 11
 NAD 83 GRS 80
 30 m x 30 m cells
 GDC project ref: 2000086

© 2001 ALBERTA NEWSPRINT COMPANY All rights reserved.

Rge 5 Rge 4 Rge 3 Rge 2 Rge 1 6th MER Rge 27 Rge 26 Rge 25 Rge 24 Rge 23 Rge 22 Rge 21 Rge 20 Rge 19 Rge 18 Rge 17

Twp 64
Twp 63
Twp 62
Twp 61
Twp 60
Twp 59
Twp 58
Twp 57
Twp 56
Twp 55