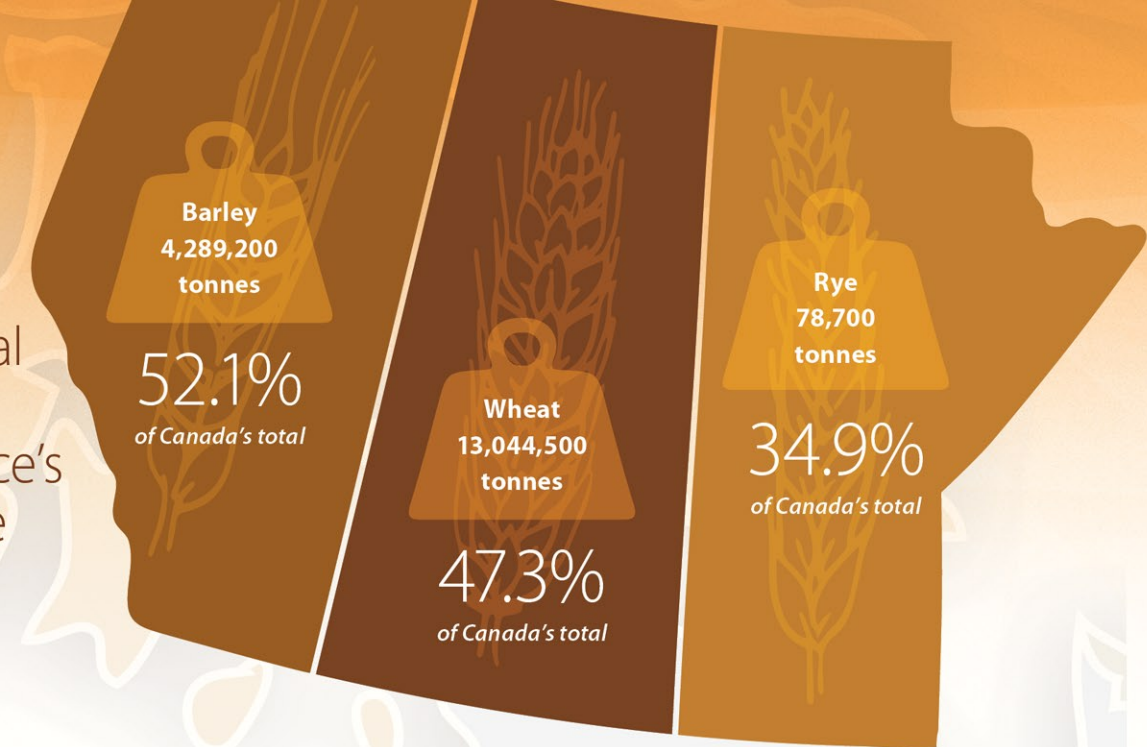


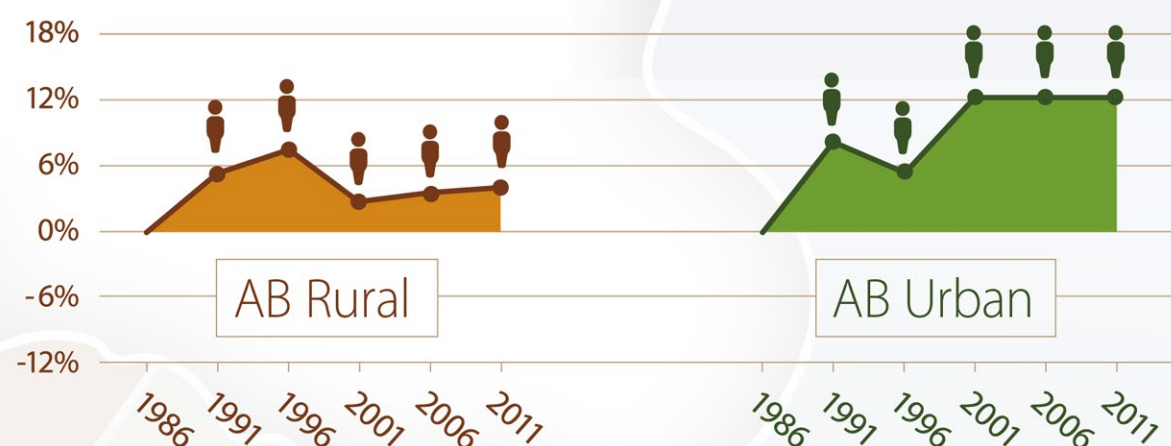
PRAIRIE CROPS

In 2015, the prairies generated \$30.6 billion in agricultural exports. Shown is each prairie province's largest crop relative to Canada's total production.

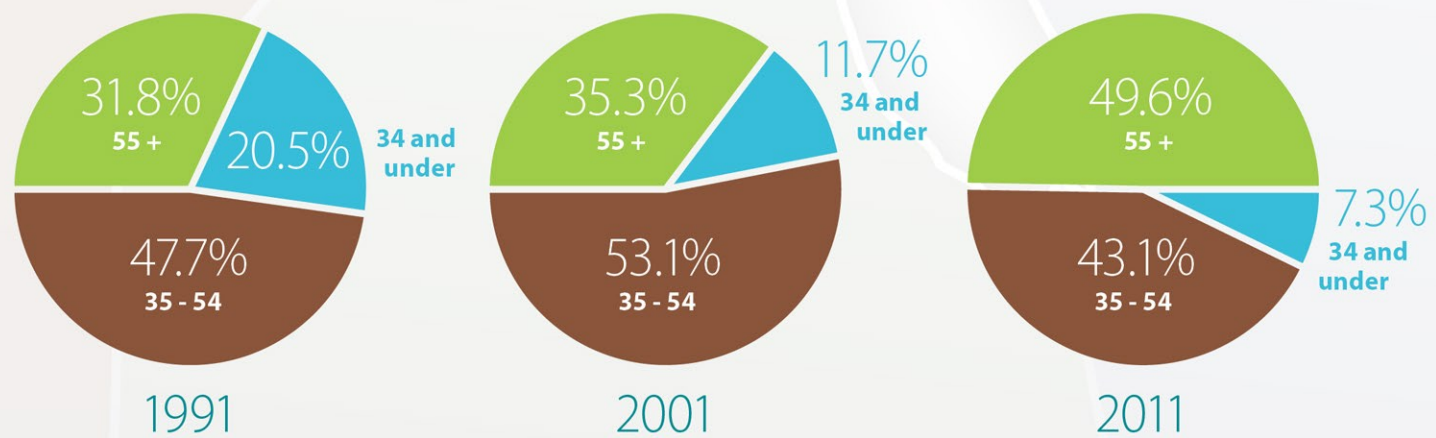


POPULATION 25-YEAR TREND

Percentage change in population. Source: Statistics Canada, Census of Population.

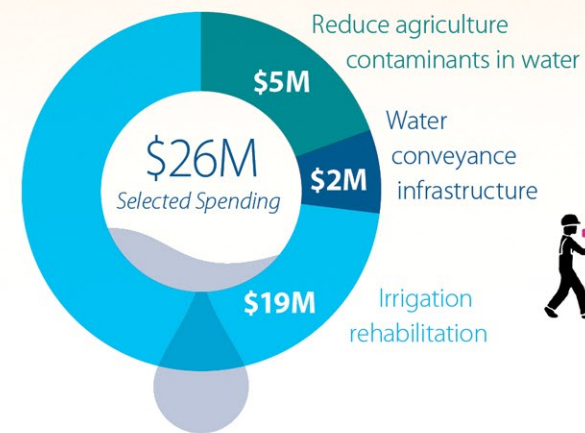


AGE PROFILES OF ALBERTA FARM OPERATORS



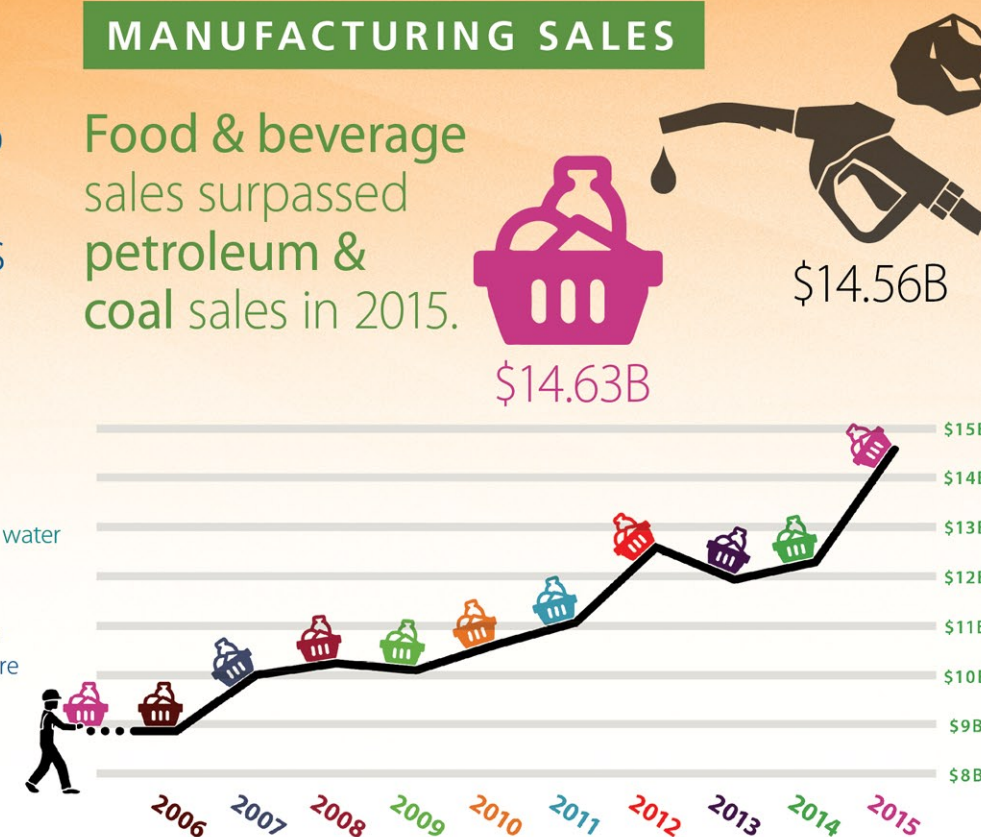
IRRIGATION

Alberta is home to 70% of all the irrigation in Canada, which includes 8,000 kilometres of canals and pipelines worth \$3.5 billion.



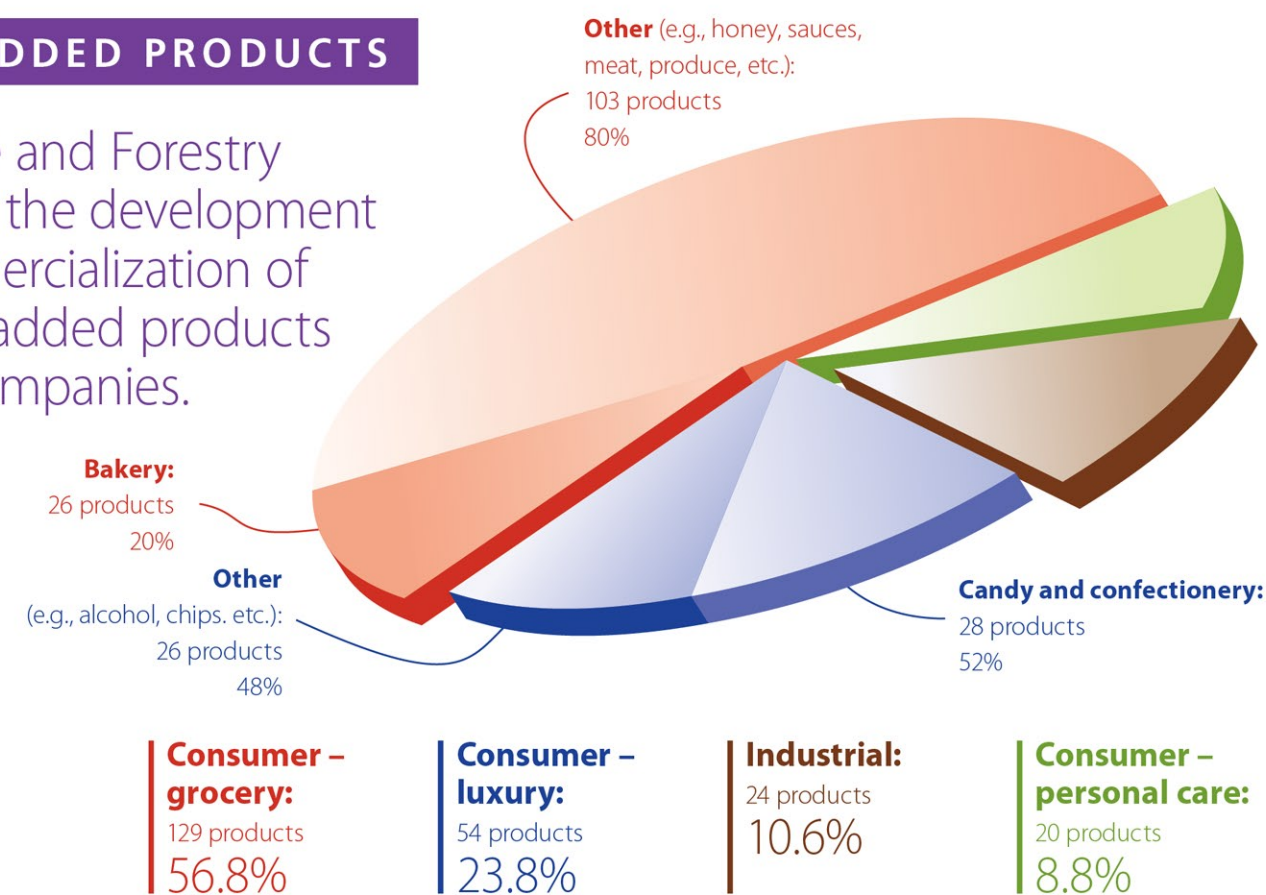
MANUFACTURING SALES

Food & beverage sales surpassed petroleum & coal sales in 2015.



VALUE-ADDED PRODUCTS

Agriculture and Forestry supported the development and commercialization of 227 value-added products from 49 companies.



Prepared by: Corporate Planning and Reporting, Alberta Agriculture and Forestry, January 2017.

AGRICULTURE AND FORESTRY

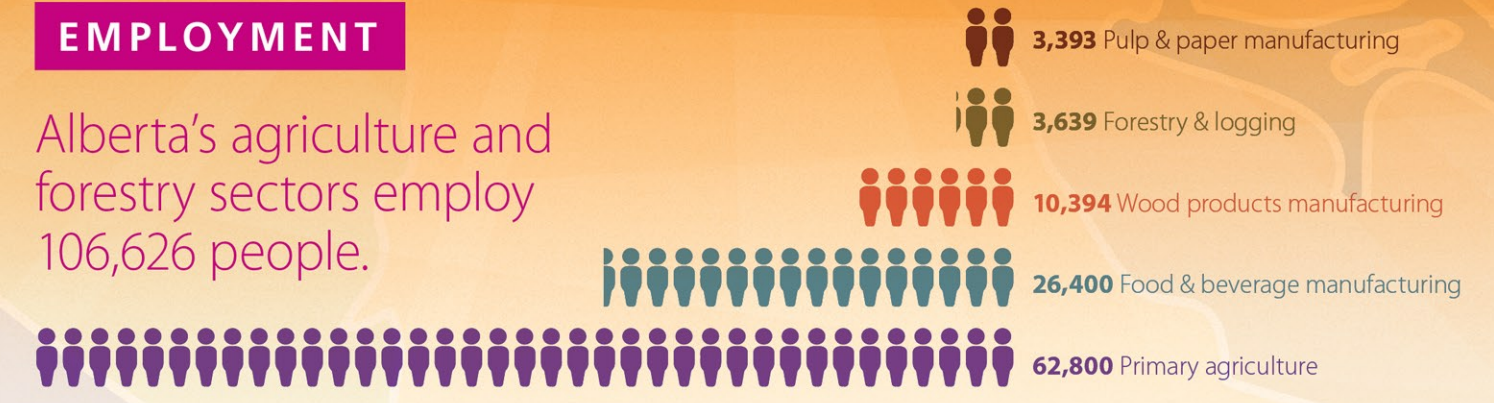
2015-16 Highlights

This document provides at-a-glance information on key areas of the agriculture and forestry sectors in order to portray the environment in which the ministry operates and to illustrate the achievement of ministry outcomes.



EMPLOYMENT

Alberta's agriculture and forestry sectors employ 106,626 people.



SUSTAINABLE FOREST MANAGEMENT

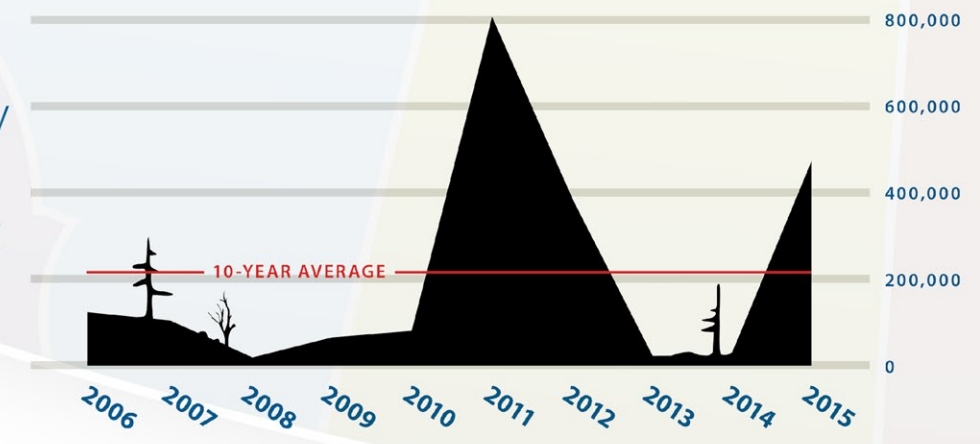
Forest regrowth as a result of reforestation is at an average of 97.5% during the past 5 years.



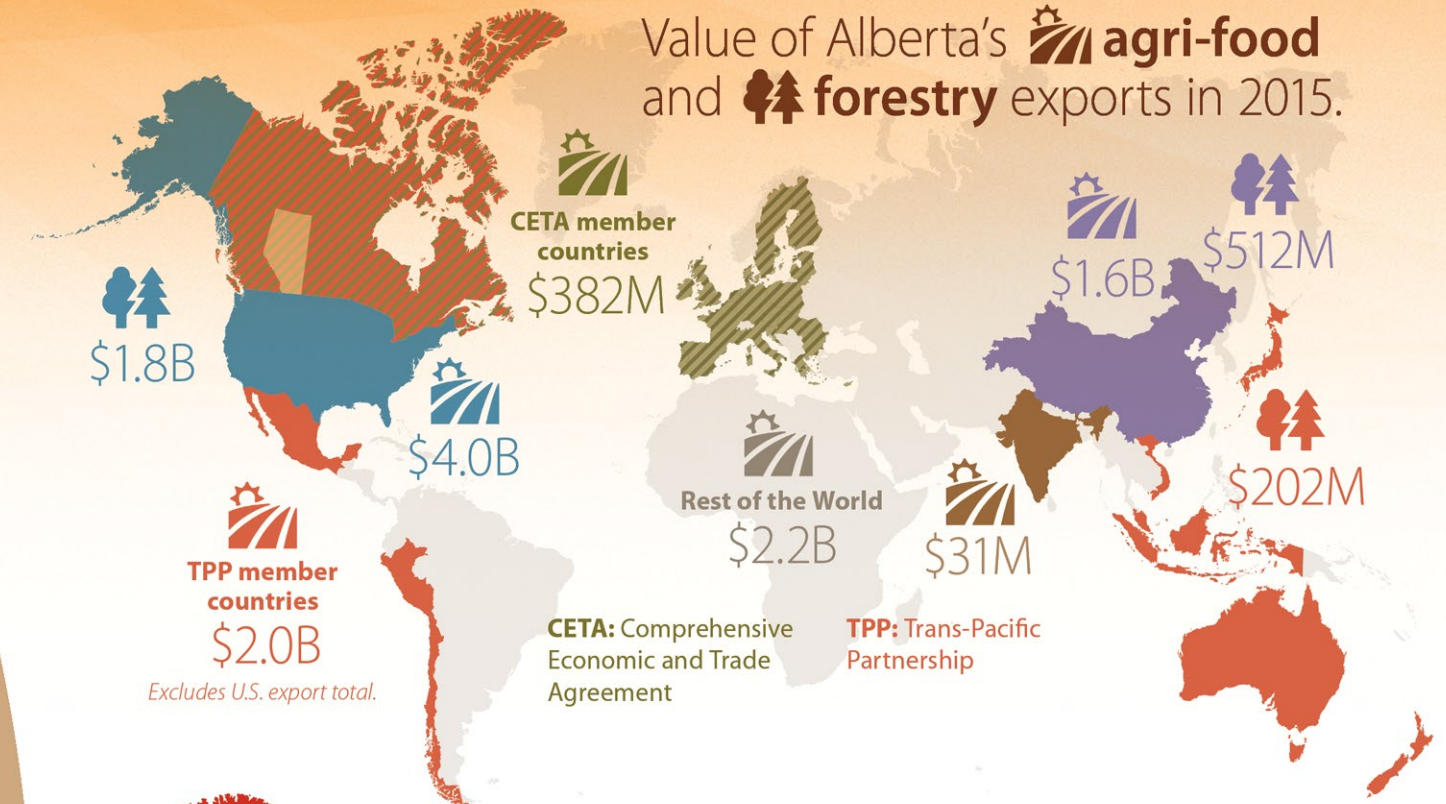
Timber harvest continues to be sustainable by staying well within the allowable cubic metres to be cut for each year.

FOREST FIRES

In the 2015 fire season, Agriculture and Forestry responded to more than 1,700 wildfires that burned approximately 500,000 hectares.

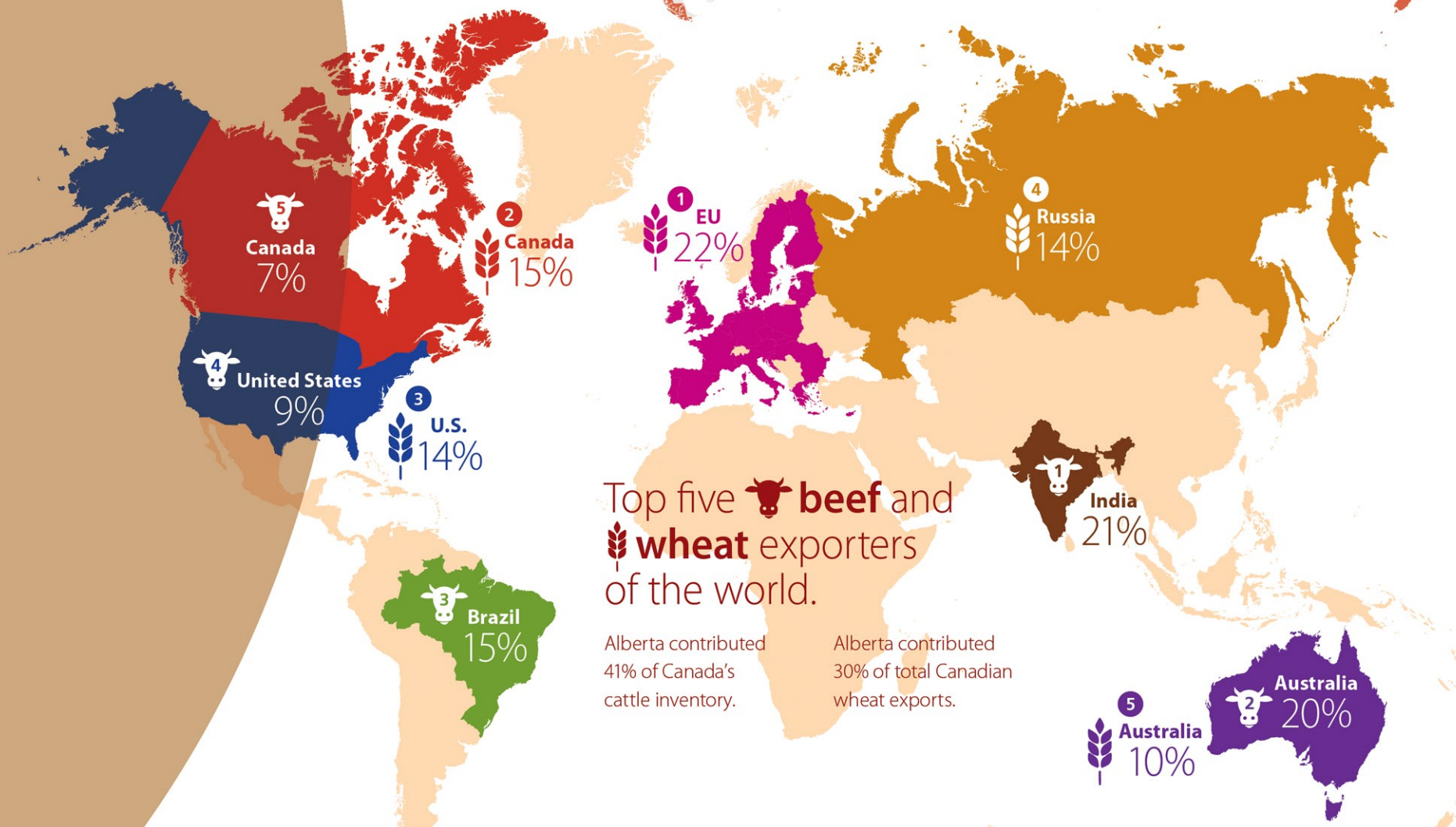


Value of Alberta's **agri-food** and **forestry** exports in 2015.



Top five **beef** and **wheat** exporters of the world.

Alberta contributed 41% of Canada's cattle inventory. Alberta contributed 30% of total Canadian wheat exports.



Agriculture and Forestry's work impacts 87% of Alberta's 66 million hectares. Total exports for 2015 were \$13 billion.

Farmland (30%): 20M Hectares
 Forest (57%): 38M Hectares
 Agri-food exports: \$10.2B
 Forestry exports: \$2.8B

SELECTED MAJOR EXPORTS



FARM CASH RECEIPTS

Farm cash receipts refer to the gross revenue of farm businesses.

