

# Evaluation of iVET® electronic birth alert device as a calving management tool for dairy cows



[pdutra@ualberta.ca](mailto:pdutra@ualberta.ca)

P.A. Dutra<sup>1,2</sup>, M. Gobikrushanth<sup>2</sup>, C.J. Felton<sup>3</sup> and D.J. Ambrose<sup>2,3</sup>

<sup>1</sup>Departamento de Zootecnia, Universidade Federal da Bahia, Salvador, Bahia, Brazil

<sup>2</sup>Department of Agricultural, Food and Nutritional Science, University of Alberta, Edmonton

<sup>3</sup>Livestock Research Branch, Alberta Agriculture and Rural Development, Edmonton

## INTRODUCTION

Knowing precisely when a cow enters labor will greatly enhance the ability to provide timely assistance in the event of difficult calving and prompt neonatal care, leading to improved animal welfare and calf survival.

## OBJECTIVE

To evaluate the iVET® electronic birth alert device as a reliable and efficient calving management tool in combination with remote live video monitoring.

[iVET Device – UNITRONIC<sup>AG</sup>, Waldstraße 8, Papenburg, GERMANY]



## TRANSMITTER

- Light sensor – alarms at changes in light intensity
- Temperature sensor - alarms at 1.5° C deviation
- Reusable for up to 20 birth detections

## RECEIVER

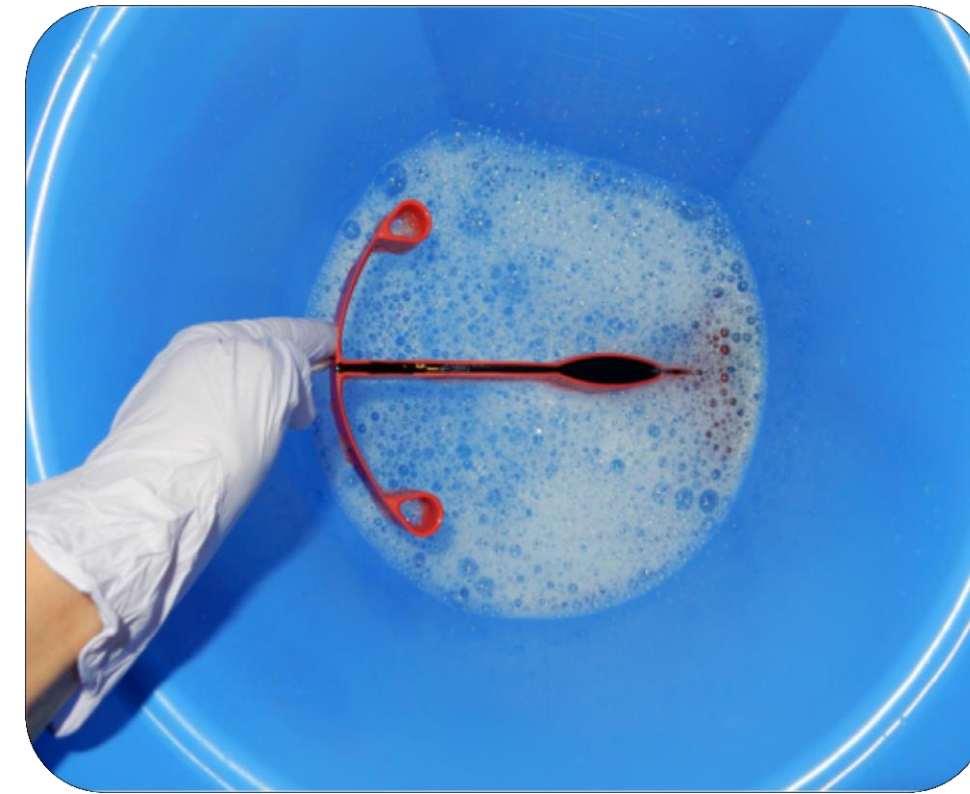
- Ceiling mounted
- Active SIM card required – sends SMS/voice messages
- Can link up to 10 transmitters simultaneously

## CASE OF INTEREST



The calf was large and extremely hypoxic. Could have died if not intervened and assisted on time with the help of iVET.

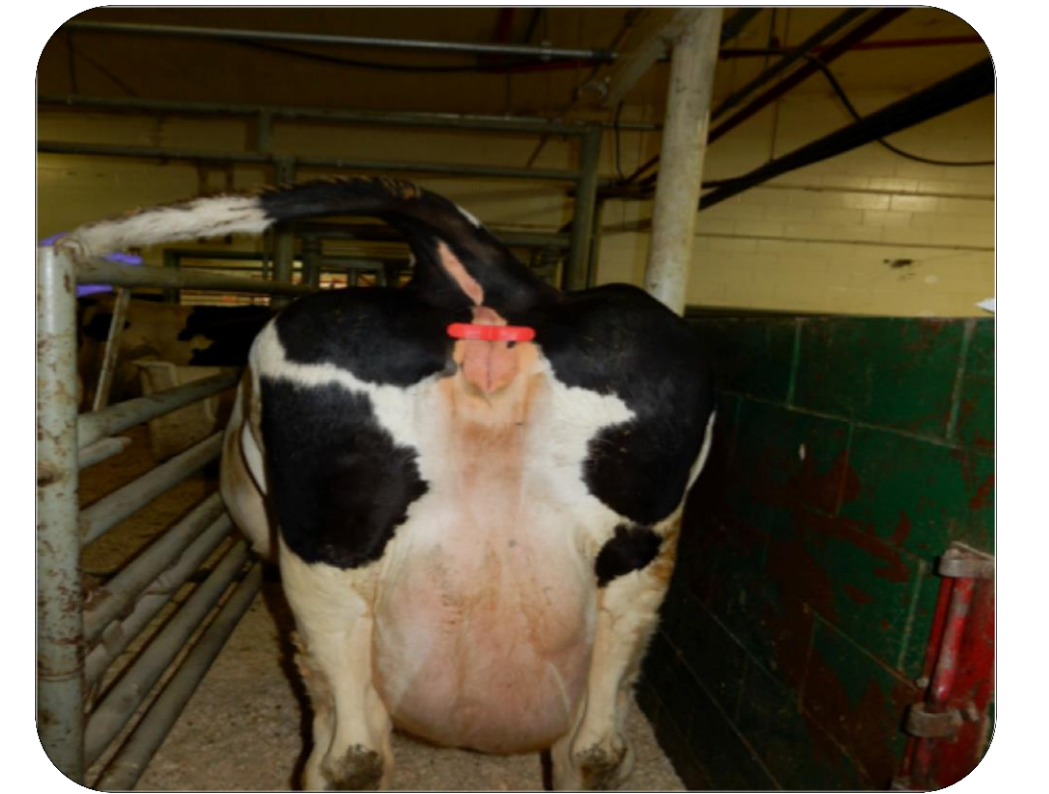
## MATERIALS AND METHODS



Disinfect transmitter



Gently insert device



Receive activation signal



Receive birth signal



Video monitoring



Successful calving

## RESULTS

Cows	False Alarm Received	Send SMS/Call received	Duration of calving (hours: mins)	Calving Score
1	No	Yes	3:07	2
2	No	Yes	3:19	0
3	No	Yes	0:02	0
4	No	Yes	20:00	1
5	No	Yes	5:54	0
6	No	Yes	0:42	0
7	No	Yes	0:02	0
8	No	Yes	0:20	1
9	No	Yes	0:23	1
10	No	Yes	1:10	0
11	No	Yes	0:10	0
12	No	Yes	0:35	0
13	No	Yes	4:24	0

Calving Score: 0 – Not assisted , 1 – Easy pull and 2 – Hard pull

## CONCLUSION

Based on 13 calving events, we believe that the iVET® device in combination with remote live video monitoring has the potential to improve calving management and calf survival.

## ACKNOWLEDGMENT

We acknowledge Livestock Research Branch, Alberta Agriculture and Rural Development for purchasing the iVET system.