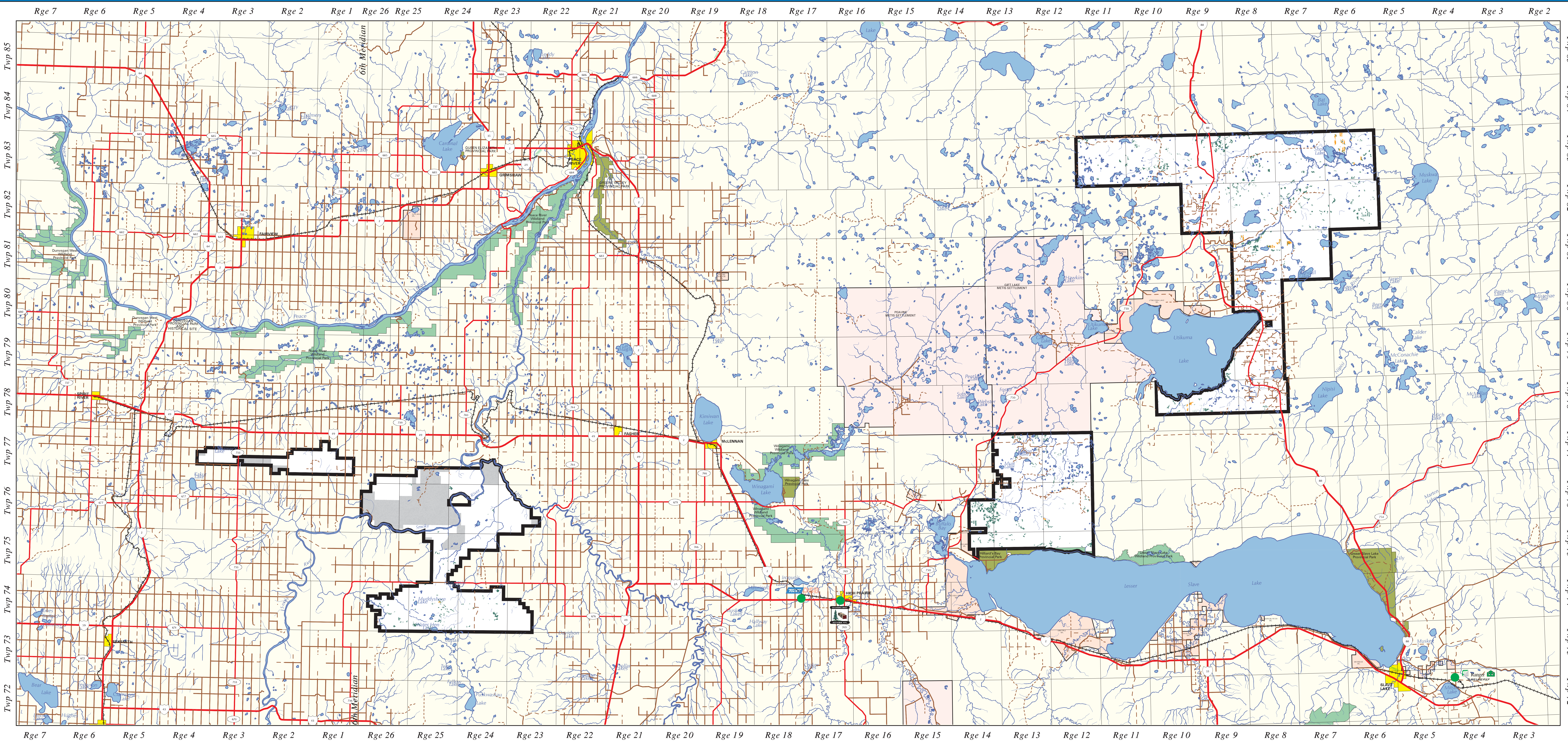
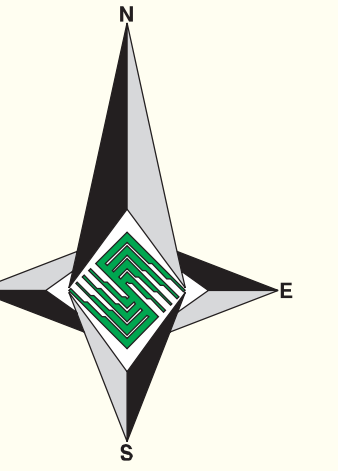


WILDLIFE HABITAT DISTRIBUTION

Species: **AMERICAN MARTEN**
 Time Period: **10 YEAR PROJECTION**



OPERATING AREA

BIRCH
WHITEMUD
SALT
UTIKUMA

PROVINCIAL INDEX

PLANIMETRIC LEGEND

	PRIMARY HIGHWAY		LAKE/RIVER
	DIVIDED PAVED GRAVEL		CITY/TOWN
	SECONDARY ROAD		PROVINCIAL PARK
	IMPROVED ROAD		WILDLAND PROVINCIAL PARK
	UNIMPROVED ROAD		METIS SETTLEMENTS
	TRUCK TRAIL		FIRST NATIONS RESERVES
	RAILWAY		GRAZING LEASE*
	RUNWAY		MILL SITE
	TOWNSHIP LINE		
	FMA BOUNDARY		
	STREAM		

* These areas were not selected in habitat analysis

AMERICAN MARTEN

Habitat
Foraging

HABITAT CRITERIA

- Canopy closure B, C, or D density
- Canopy composition of Sb, Sw, and/or Fb greater than 50%
- Tree Height greater than 15m
- Stand age greater than 90 years

OR

- Deciduous overstorey with an understorey meeting the same specifications as above

FORAGE CRITERIA

- Cutblocks greater than or equal to 30 years and less than or equal to 90 years old adjacent to stands meeting the above habitat criteria

Data is our core business™

0 5 10 15 20 25
KILOMETRES

Map Version 1.00
 Map Date: January 13, 2005
 Original Map Scale: 1:250000
 PMS File: marten_habitat_and_forage_10.dbf
 Map Production: Silvacom Ltd.
 Silvacom Reference: 1-001
 Map File: J:\010\maps\wildlife_map.apl