











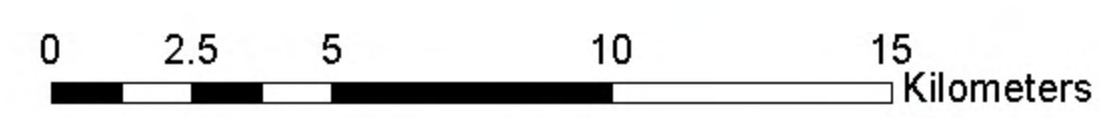


Appendix 7
Net Land Base Maps

Net Land Base

-  Mill Site
- Existing Major Roads**
 -  Highway
 -  Paved - Two Lane
 -  Gravel
- Hydrographic Features**
 -  Major Streams/Rivers
 -  Streams
 -  Lakes/Wetlands
 -  Reserve
 -  Urban Areas
 -  SLS Compartments
- Land Base**
 -  Active Land Base
 -  Passive Land Base



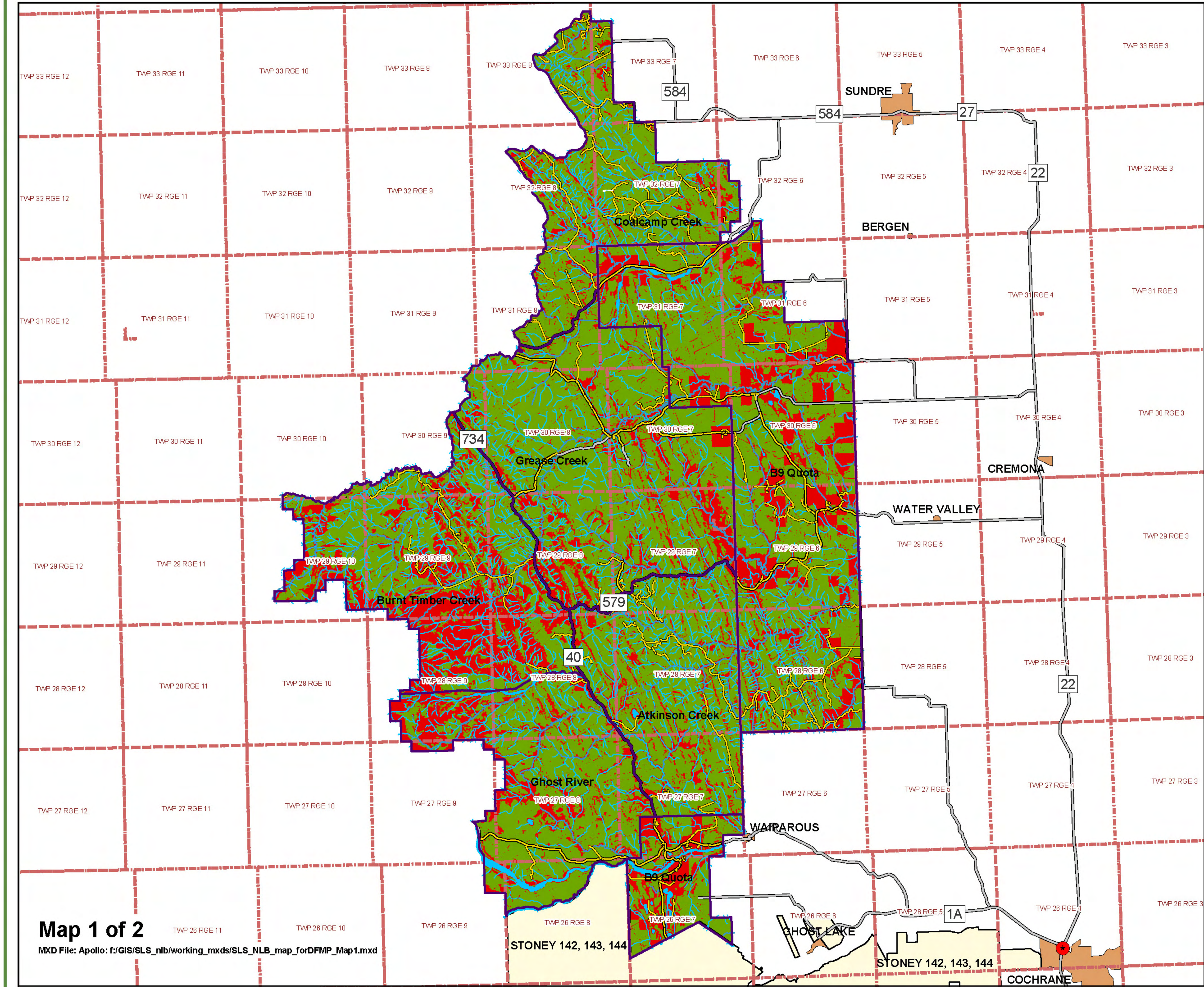
UTM Nad83 Zone 11 Projection
Scale: 1 : 135,000
November 24th, 2006

Produced by: Tesera Systems Inc.
Generated by: Spencer Cox
Telephone: (403) 932-0440
Email: spencer.cox@tesera.com



While considerable diligence has been exercised to ensure the accuracy of this map, Tesera Systems Inc. is not responsible for any damages or losses resulting from its application in forest development planning.

Copyright 2006 Spray Lake Sawmills



Net Land Base

- Mill Site
- Existing Major Roads**
 - Highway
 - Paved - Two Lane
 - Gravel
- Hydrographic Features**
 - Major Streams/Rivers
 - Streams
 - Lakes/Wetlands
 - Reserve
 - Urban Areas
 - SLS Compartments
- Land Base**
 - Active Land Base
 - Passive Land Base



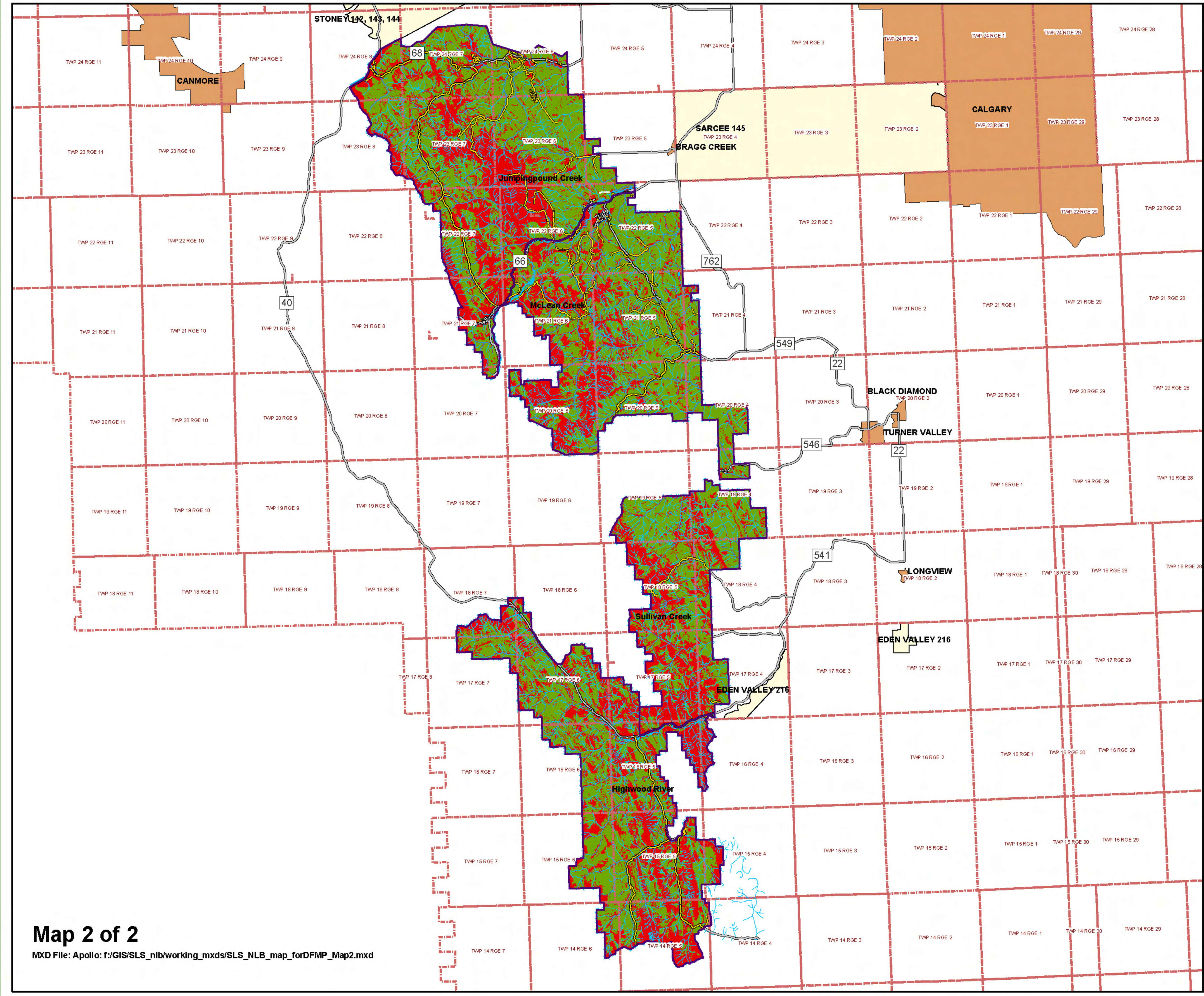
0 3.5 7 14 21 Kilometers

UTM Nad83 Zone 11 Projection
Scale: 1 : 185,000
November 24th, 2006

Produced by: Tesera Systems Inc.
Generated by: Spencer Cox
Telephone: (403) 932-0440
Email: spencer.cox@tesera.com

While considerable diligence has been exercised to ensure the accuracy of this map, Tesera Systems Inc. is not responsible for any damages or losses resulting from its application in forest development planning.

Copyright 2006 Spray Lake Sawmills



Appendix 8
Time 0 (2001) Age Class Maps



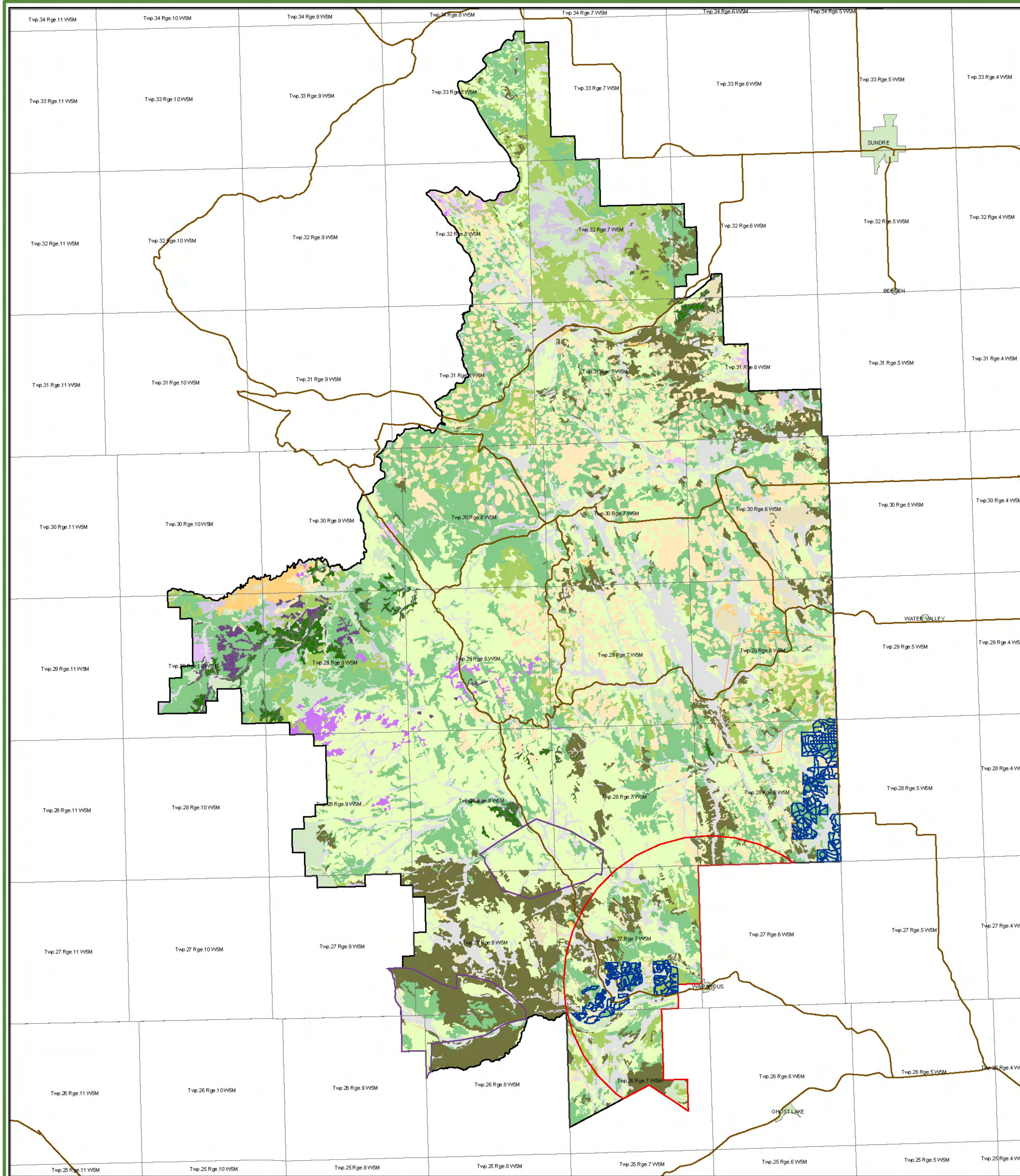
Time0 Age Class Map North FMU

Legend

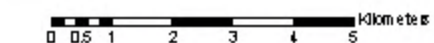
- Main Roads
- CTP Areas
- Fire Hazard Zones
- Cities, Towns, Villages
- Quota Holders Boundary
- MPB Priority Areas

UNOPERABLE

- 0
- 1-20
- 21-40
- 41-60
- 61-80
- 81-100
- 101-120
- 121-140
- 141-160
- 161-180
- 181-200
- 201-220
- 221-240
- 241+



UTM Nad83, Zone 11 Projection
Scale: 1 : 125,000
November 24, 2006



Produced by: Tesera Systems Inc.
Generated by: Dwight Crouse
Telephone: (403) 932-0446
Email: dwight.crouse@tesera.com



While considerable diligence has been exercised to ensure the accuracy of this map, Tesera Systems Inc. is not responsible for any damages or losses resulting from its application in forest development planning.

Copyright 2004 Spray Lake Sawmills



Time0 Age Class M South FMU

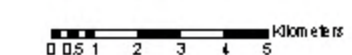
Legend

- Main Roads
- CTP Areas
- Fire Hazard Zones
- Cities, Towns, Villages
- Quota Holders Boundary
- MPB Priority Areas

20-year Age Classes

- 0
- 1-20
- 21-40
- 41-60
- 61-80
- 81-100
- 101-120
- 121-140
- 141-160
- 161-180
- 181-200
- 201-220
- 221-240
- 241+

UTM Nad83, Zone 11 Projection
Scale: 1 : 175,000
November 24, 2006



Produced by: Tesera Systems Inc.
Generated by: Dwight Crouse
Telephone: (403) 932-0446
Email: dwight.crouse@tesera.com



While considerable diligence has been exercised to ensure the accuracy of this data, Tesera Systems Inc. is not responsible for any damages or losses resulting from its use in any application. For more information, please contact us.

Copyright 2004 Spray Lake Sawmills