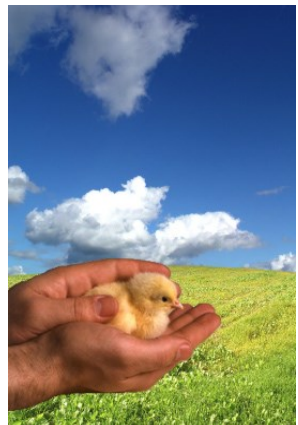
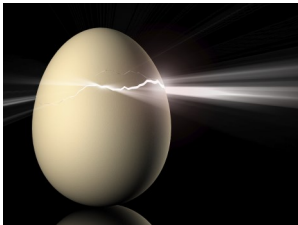


# Working Together... your blueprint for success

## On-Farm Fertility Testing: Steps for success

### Set-up

1. Plug in the incubator at least one hour prior to setting eggs. For first time use—it can take several hours to adjust the temperature setting properly. Follow the incubator directions for set-up and temperature adjustment. Temperature should be at 100 F.
2. Select 42 hatching eggs. Eggs should be suitable for shipping to the hatchery. Floor eggs are not acceptable for fertility testing. Following are unsuitable eggs:



3. Place 42 eggs inside the incubator directly on the wire mesh floor.
4. Verify that the incubator is operating properly during the incubation period (3, 5 or 7 days).

### Break-Out

1. Using a sharp pair of scissors, pierce the top wide end of the egg and cut off the top.
2. Embryonic development may be visible at this point. It may also be necessary to pour the egg contents into a small container to assess development.

See the back of this sheet for photos of embryonic development between 1-7 days of incubation.

Egg Images from: Ross Tech—Investigating Hatchery Practice, Aviagen. October 2009

# Working Together... your blueprint for success

## Embryonic Development



### Day 1

- Appearance of tissue development



### Day 3

- Heart beats
- Blood vessels very visible



### Day 5

- Appearance of elbows and knees



### Day 7

- Comb growth begins
- Egg tooth begins to appear

*Embryonic Development Images from: Chick Embryo Development, Cobb-Vantress*