

Agri-Food Exports

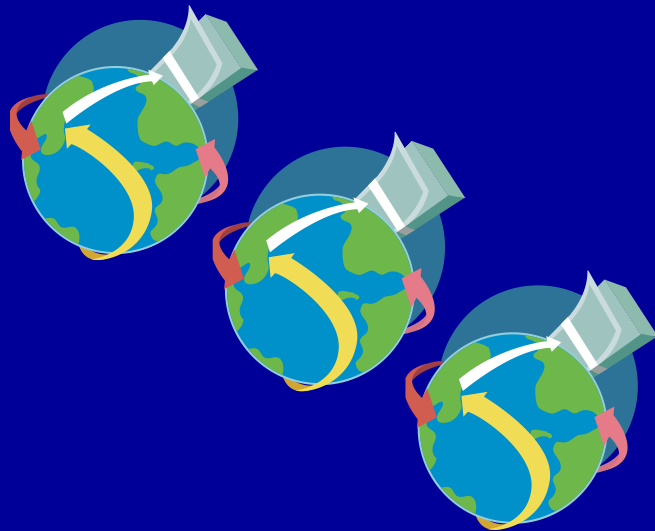
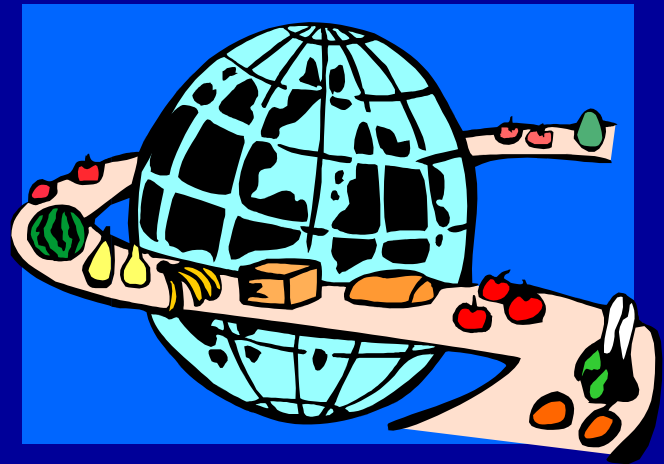
Alberta
2007 to 2016

Highlights on Alberta Agri-Food Exports in 2016

Tables:

Alberta Agri-Food Exports, 2007-2016:

- Top 5 Export Products and Markets
- All Products (Value and Quantity)
- Top 50 Markets
- Exports to the United States
- Exports to China
- Exports to Japan
- Exports to Mexico
- Exports to South Korea
- Exports to EU Countries



Alberta Agri-Food Exports, 2007 to 2016 (1)

Table of Content		Page
	Highlights on Alberta Agri-Food Exports in 2016	1
Tables		
1	Alberta Agri-Food Exports, Top Products and Markets, 2007-2016, Value	2
2	Alberta Agri-Food Exports by Product, 2007-2016, Value	3
3	Alberta Agri-Food Exports by Product, 2007-2016, Quantity	4
4	Alberta Agri-Food Exports by Country, 2007-2016, Value	5
5	Alberta Agri-Food Exports to the United States, 2007-2016, Value	6
6	Alberta Agri-Food Exports to China, 2007-2016, Value	7
7	Alberta Agri-Food Exports to Japan, 2007-2016, Value	8
8	Alberta Agri-Food Exports to Mexico, 2007-2016, Value	9
9	Alberta Agri-Food Exports to South Korea, 2007-2016, Value	10
10	Alberta Agri-Food Exports to EU 28 by Country, 2007-2016 Value	11
11	Alberta Agri-Food Exports to EU 28 by Product, 2007-2016 Value	11

(1) 2016 trade statistics are subject to revisions.

Note to Users: *The contents of this document may not be used or reproduced without properly accrediting Alberta Agriculture and Forestry, Economics and Competitiveness Branch, Statistics and Data Development Section.*

If you require more information or have any questions regarding this document please contact: the Statistics and Data Development Section, at 780-427-4011

September 15, 2017

Prepared by: Barbara Pekalski, Trade Research Statistician, phone: 780-427-5386, e-mail: barb.pekalski@gov.ab.ca
 Alberta Agriculture and Forestry, Economics and Competitiveness Branch, Statistics and Data Development Section

Highlights on Alberta Agri-Food Exports in 2016

In 2016, Alberta exports of primary and processed agricultural and food products (agri-food) were \$10.0 billion, marginally lower than the 2015 record of 10.2 billion. For the third consecutive year, gains were reported mainly in the exports of value added products. Nationally, Alberta accounted for 17.7 per cent of the Canadian total, and remained the third largest exporter of agri-food products after Saskatchewan and Ontario.

Export Products

Exports of value added products continued to grow, up 4.9 per cent to \$5.04 billion and represented just over one-half of Alberta's total. Meats were the largest value added exports, followed by refined and crude canola oil, french fries, prepared animal feeds, malt and canola cake and meal.

Exports of primary commodities (animals and crops), declined 7.9 per cent to \$4.96 billion in 2016 and accounted for 49.6 per cent of Alberta's total exports. The decline was the result of lower exports of major cereal grains combined with weaker prices.

In the crop sector, exports of major grains declined in both value and quantity, while exports of oilseeds, with the exception of flaxseed, increased in 2016. Wheat exports fell almost 25.0 per cent in value and 18.5 per cent in quantity. Substantially lower exports of wheat to the United States, Indonesia, Bangladesh and Peru contributed to the decline. Exports of canola seed rose 9.8 per cent in value and 11.0 per cent in quantity. China remained the largest market for canola seed, followed by Japan, Mexico and Pakistan. Among the other crops, increases were reported for dry peas, lentils, potatoes, mustard seed and other oilseeds.

In the livestock sector, exports of live animals improved in 2016. While exports of live cattle rose in both value and quantity, the increase in numbers was higher than in value. Also, live hog exports showed higher increase in numbers than in value. On the other hand, exports of beef rose 9.8 per cent in quantity, while the value declined slightly. In contrast, pork exports grew marginally in value, while quantity was down. The United States was Alberta's largest export market for livestock.

Trading Partners

The United States (US) continues to be Alberta's largest trading partner, accounting for 40.5 per cent of total agri-food exports. In 2016, exports to this market were just over \$4.0 billion. Substantial increases occurred in exports of value added products such as crude canola oil, dairy products, honey, processed meat and beef. These increases moderated declines in primary commodity exports. Commodity exports fell 5.2 per cent from 2015, mainly due to lower export values and quantities of major grains and oilseeds. The US remained Alberta's sole export market for non-purebred live cattle and hogs, and accounted for over 70.0 per cent of the province's total beef exports (value).

Exports to China, Alberta's second largest market in 2016, fell 13.4 per cent to \$1.4 billion. The decline was a result of substantially lower exports of wheat, barley, canola seed, beef and pork. Partially offsetting these declines were larger exports of crude canola oil. As in previous years, crude canola oil was the second largest export to China, after canola seed. In 2016, exports of canola seed fell 9.5 per cent, while crude canola oil was up 34.9 per cent. Canola seed and oil combined, made up almost 65.0 per cent of Alberta's total exports to this market.

Exports to Japan, Alberta's third largest market, rose 11.3 per cent to \$1.2 billion in 2016. Increased exports of canola seed, wheat, beef, pork and processed meat, contributed to the growth. Canola seed (\$403 million), the largest export to Japan, increased 13.0 per cent in value. Exports of beef rose 82.0 per cent to \$118.5 million. Pork, traditionally the second largest exports to this market, rose 7.0 per cent to \$213 million. Other increases included prepared animal feeds, milled cereals and horse meat.

Exports to Mexico, Alberta's fourth largest market, fell 5.8 per cent to \$540 million in 2016. Lower exports of beef, wheat, milled cereals, canola seed and live cattle contributed to the decline. Beef exports fell 31.4 per cent to \$98 million, and canola was down 1.5 per cent to \$248 million. Canola seed, beef and wheat combined, made up about 80.0 per cent of Alberta's total agri-food exports to this market.

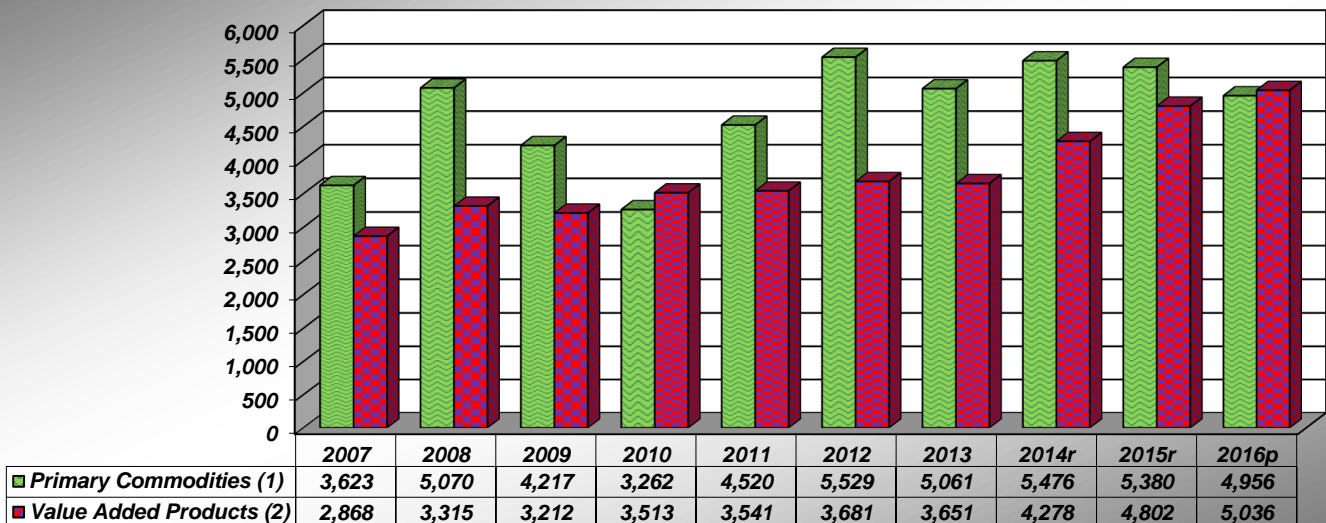
Exports to South Korea, Alberta's fifth largest export market, grew moderately by 1.8 per cent to \$237 million in 2016. Substantial increases were reported in exports of beef, french fries, animal feeds, crude canola oil and pork. On the other hand, exports of wheat and hides and skins declined from 2015.

At the regional level, the largest exports were reported for North America and Asia. Exports to Asia fell 1.4 per cent to \$3.9 billion and accounted for 38.9 per cent of Alberta's total. The highest growth occurred in exports to Eastern and Western Europe, up 18.0 per cent and 5.0 per cent, respectively.

Table 1 - Alberta Agri-Food Exports, Top Products and Markets, 2007 - 2016, Value

	2007	2008	2009	2010	2011	2012	2013	2014r	2015r	2016p	2016/2015 % Change
\$ Millions											
Total Agri-Food Exports	6,491	8,386	7,429	6,775	8,061	9,210	8,712	9,754	10,182	9,992	-1.9
- Primary Commodities (1)	3,623	5,070	4,217	3,262	4,520	5,529	5,061	5,476	5,380	4,956	-7.9
<i>% of Total</i>	55.8	60.5	56.8	48.2	56.1	60.0	58.1	56.1	52.8	49.6	
- Value Added Products (2)	2,868	3,315	3,212	3,513	3,541	3,681	3,651	4,278	4,802	5,036	4.9
<i>% of Total</i>	44.2	39.5	43.2	51.8	43.9	40.0	41.9	43.9	47.2	50.4	
\$ Millions											
Top Export Products (3)											2016/2015 % Change
1. Canola Seed	944	1,493	1,220	996	1,652	1,873	1,616	1,767	1,677	1,842	9.8
2. Wheat	1,422	2,398	2,093	1,410	1,915	2,276	2,307	2,339	2,423	1,819	-24.9
3. Beef (Fresh, Chilled, Frozen, Incl. Offal)	888	1,069	957	1,052	969	852	962	1,429	1,696	1,671	-1.5
4. Live Cattle (Excl. Purebred)	702	542	465	525	464	588	478	715	585	623	6.4
5. Crude Canola Oil	333	255	409	644	563	630	445	185	324	558	72.2
Top 5 Products	4,288	5,758	5,145	4,626	5,563	6,220	5,807	6,435	6,706	6,512	-2.9
<i>% of Total</i>	66.1	68.7	69.3	68.3	69.0	67.5	66.7	66.0	65.9	65.2	
\$ Millions											
Top Export Markets (3)											2016/2015 % Change
1. United States	2,697	3,213	2,704	2,431	2,551	2,967	3,050	3,945	3,998	4,046	1.2
<i>% of Total</i>	94.0	96.9	84.2	69.2	72.0	32.2	35.0	40.4	39.3	40.5	
2. China	468	624	987	1,069	937	1,646	1,517	1,329	1,588	1,375	-13.4
3. Japan	907	1,196	919	828	1,172	1,346	1,288	1,197	1,101	1,226	11.3
4. Mexico	456	606	438	460	640	632	536	537	572	540	-5.8
5. South Korea	118	149	117	146	297	174	114	228	233	237	1.8
Top 5 Markets	4,645	5,787	5,165	4,934	5,596	6,766	6,506	7,237	7,492	7,423	-0.9
<i>% of Total</i>	71.6	69.0	69.5	72.8	69.4	73.5	74.7	74.2	73.6	74.3	

Alberta Agri-Food Exports, 2007 to 2016, Value \$ Millions
Primary Commodities and Value Added Products



(1) Primary commodities refer to animal and crops.

(2) Value added products refer to products and by-products of manufacture (meats, cereal preparations, animal feed, oils and fats, beverages and other food products. It also includes crude animal and plant products (peat moss, nursery, hides and skins).

(3) Top products and markets are ranked by the 2016 year.

r - revised p - preliminary

Source: Statistics Canada

Prepared by: Alberta Agriculture and Forestry, Economics and Competitiveness Branch, Statistics and Data Development Section

Table 2 - Alberta Agri-Food Exports by Product, 2007 - 2016, Value

	2007	2008	2009	2010	2011	2012	2013	2014r	2015r	2016p	2016/2015
	\$ Millions										% Change
Total Agri-Food Exports	6,491.5	8,385.9	7,428.8	6,775.4	8,061.1	9,209.9	8,711.6	9,754.1	10,181.8	9,991.7	-1.9
Animals and Crops	3,623.1	5,070.5	4,216.7	3,262.4	4,520.3	5,529.2	5,060.7	5,476.1	5,379.6	4,955.8	-7.9
Purebred Cattle	6.1	0.4	0.8	0.1	0.4	0.7	4.3	3.7	1.0	1.5	55.9
Other Cattle (Excl. Purebred)	702.1	542.3	465.3	524.6	463.6	588.3	477.9	714.7	585.1	622.5	6.4
Live Hogs	53.8	50.0	38.7	40.2	42.5	39.3	45.2	61.8	53.1	54.6	2.8
Other Live Animals	35.7	35.0	30.0	28.4	20.3	23.6	26.4	41.5	52.9	53.4	0.8
Barley	157.2	323.9	146.9	73.4	120.2	188.4	183.0	194.2	194.9	142.0	-27.1
Wheat	1,421.7	2,398.5	2,093.1	1,409.6	1,915.3	2,276.1	2,307.0	2,339.5	2,423.2	1,818.8	-24.9
Oats	44.2	25.4	23.3	17.5	50.7	109.8	53.7	41.4	44.2	37.2	-15.8
Other Cereals Unmilled	16.8	9.8	8.9	6.7	14.6	21.7	26.0	7.0	20.7	7.3	-64.9
Hay and Fodder (Incl. Dehy Alfalfa Cubes)	129.8	88.3	79.9	51.7	64.3	114.2	104.1	100.5	96.1	89.4	-7.0
Peas, Dried	23.2	8.4	7.4	26.5	92.7	149.9	85.6	64.6	59.0	80.6	36.5
Lentils	7.9	5.5	8.7	9.2	2.4	3.8	5.6	5.6	13.5	34.7	157.6
Other Dried Beans	28.9	27.3	22.3	15.2	21.7	54.9	40.8	45.5	53.7	54.9	2.3
Potatoes, Seed and Other	16.0	3.8	8.9	8.8	10.9	11.6	11.9	21.6	26.3	52.4	99.2
Vegetables and Fruits	14.9	13.5	16.0	18.6	7.6	11.0	13.2	14.8	6.4	3.6	-42.9
Canola Seed	943.7	1,493.3	1,219.8	996.2	1,651.9	1,873.0	1,615.9	1,766.7	1,677.2	1,841.7	9.8
Mustard Seed	15.4	31.0	37.1	26.2	30.1	20.2	24.4	21.7	18.6	19.8	6.5
Linseed	5.3	12.8	8.0	8.8	9.8	21.6	33.9	29.5	51.0	34.4	-32.5
Other Oilseeds/Oilnuts/Kernels	0.5	1.1	1.5	0.7	1.2	21.0	1.7	1.7	2.6	6.9	167.6
Crude Animal and Plant Products	336.8	325.9	248.7	316.3	324.8	336.6	384.9	467.5	479.8	477.1	-0.6
Raw Hides and Skins	191.1	178.2	102.6	181.1	188.4	176.1	204.5	253.3	221.1	205.6	-7.0
Fur Skins Undressed	0.1	0.0	0.0	0.0	0.0	0.0	0.0	0.0	0.0	0.2	N/A
Bovine Semen	23.4	23.3	27.2	27.7	33.0	36.5	43.0	55.1	47.3	55.3	16.8
Other Crude Animal Products	22.9	29.2	28.9	29.5	27.4	32.0	38.9	52.8	69.6	56.0	-19.6
Seeds for Sowing	51.9	48.3	35.3	25.5	29.3	37.9	44.6	43.0	51.3	61.9	20.8
Nursery Stock	0.4	0.4	0.3	0.3	0.3	0.4	0.4	0.2	0.3	0.3	17.4
Peat Moss	44.9	43.1	51.2	48.0	41.5	48.8	48.6	54.9	80.6	85.5	6.2
Other Crude Vegetable Products	2.0	3.3	3.1	4.3	4.9	4.8	4.8	8.3	9.8	12.3	26.2
Products of Manufacture	2,531.5	2,989.6	2,963.4	3,196.7	3,215.9	3,344.2	3,266.1	3,810.4	4,322.3	4,558.8	5.5
Beef (Fresh, Chilled, Frozen, Incl. Offal)	888.0	1,068.7	956.9	1,051.8	969.4	852.2	961.7	1,428.9	1,696.5	1,670.6	-1.5
Pork (Fresh, Chilled, Frozen, Incl. Offal)	345.8	342.1	361.1	391.6	411.5	365.0	348.3	467.1	468.9	472.0	0.7
Horse Meat (Fresh, Chilled, Frozen)	47.7	52.7	60.3	49.2	41.9	45.9	46.1	53.8	50.9	51.0	0.3
Other Meat (Fresh, Chilled, Frozen, Incl. Offal)	11.4	15.6	14.8	14.5	12.2	11.9	12.8	11.8	16.4	15.7	-4.4
Processed Meats	5.4	2.7	3.6	3.2	9.0	23.0	28.8	34.5	33.6	43.5	29.5
Dairy Produce	8.4	4.0	0.4	3.1	1.7	4.9	0.5	3.5	0.3	0.8	189.8
Eggs	4.6	0.1	-	-	-	-	-	0.0	1.1	1.0	-4.8
Honey	7.0	18.5	16.9	15.5	9.4	11.0	12.8	14.9	20.5	33.1	61.7
Wheat or Meslin Flour	10.9	19.0	22.1	15.7	6.2	5.2	6.4	8.7	8.6	9.0	4.8
Malt Roasted or not Roasted	136.7	244.0	223.5	142.7	151.5	180.0	174.6	225.6	237.6	241.2	1.5
Other Cereals, Milled	25.9	32.7	37.2	28.5	33.2	41.7	47.4	51.1	61.6	58.9	-4.3
Cereal Preparations	37.8	40.2	42.5	38.9	35.8	32.2	33.0	37.2	48.9	50.2	2.7
Vegetable and Fruit Preparations	7.9	9.7	7.9	5.0	6.9	4.4	7.1	15.1	19.0	23.6	24.2
Fruit and Vegetable Juices	8.8	9.5	9.3	8.2	7.4	6.9	4.9	3.7	0.0	0.1	N/A
Processed Potatoes	239.1	235.2	261.3	191.4	201.6	203.3	208.3	279.0	328.8	336.7	2.4
Sugar and Sugar Preparations	14.5	31.9	12.2	14.6	39.8	34.1	17.8	10.7	17.7	16.2	-8.4
Food and Food Materials	35.9	37.6	38.1	35.6	44.1	44.7	29.9	36.4	38.0	41.3	8.7
Oilseed Cake and Meal	96.0	145.9	146.1	168.8	165.2	225.5	229.9	279.2	253.3	236.3	-6.7
Alfalfa Meal and Pellets	4.6	0.1	0.0	0.0	0.1	4.3	1.3	1.2	1.2	1.5	29.1
Other Feeds of Vegetable Origin	4.6	3.0	7.5	6.3	4.4	6.9	14.1	15.4	14.5	10.4	-28.2
Animal Feed Preparations	41.3	48.3	68.2	115.5	120.2	142.7	212.6	242.9	316.9	273.5	-13.7
Whiskey	34.5	39.2	39.3	42.8	54.7	73.7	71.5	66.5	66.9	61.8	-7.5
Beer	1.1	1.5	1.3	3.0	1.2	-	0.0	0.0	0.0	0.1	326.7
Other Beverages (Excl. Fruit Juices)	17.1	20.8	36.2	29.6	3.5	4.0	7.6	9.9	16.8	15.4	-8.7
Tobacco	-	-	-	-	-	-	0.0	-	-	0.2	-
Tallow	16.4	32.9	17.9	29.5	119.4	124.6	104.3	100.5	88.5	128.2	44.9
Canola/Mustard Oil - Crude	332.5	255.0	409.4	643.7	563.0	630.0	444.6	184.9	324.2	558.4	72.2
Canola/Mustard Oil - Refined	122.7	232.0	136.1	112.3	143.0	184.5	167.1	145.4	113.4	114.9	1.3
Other Oils, Fats and Waxes	25.0	46.8	33.0	35.6	59.4	81.7	72.3	82.3	78.3	93.0	18.8
Other Products	0.0	-	-	0.0	0.0	-	0.1	-	-	-	-

N/A - not applicable

Source: Statistics Canada

r - revised p - preliminary

Prepared by: Alberta Agriculture and Forestry, Economics and Competitiveness Branch, Statistics and Data Development Section

Table 3 - Alberta Agri-Food Exports by Product, 2007 - 2016, Quantity

	2007	2008	2009	2010	2011	2012	2013	2014r	2015r	2016p	2016/2015
Live Animals	Number										% Change
Purebred Cattle	2,002	56	85	95	61	46	950	1,063	294	313	6.5
Other Cattle (Excl. Purebred)	589,618	463,272	395,970	452,965	336,220	383,843	290,780	359,814	225,777	280,453	24.2
Live Hogs	602,956	611,515	536,839	546,086	636,466	599,942	571,400	614,794	643,722	714,727	11.0
Meat	tonnes										% Change
Beef (Fresh, Chilled, Frozen, Incl. Offal)	267,421	316,523	296,377	307,251	249,170	195,631	205,184	235,525	240,469	263,968	9.8
Pork (Fresh, Chilled, Frozen, Incl. Offal)	130,679	116,623	123,851	129,331	123,050	111,556	109,930	122,244	131,035	118,355	-9.7
Horse Meat (Fresh/Chilled/Frozen)	9,738	9,991	10,514	8,709	7,426	8,811	8,312	8,652	6,919	6,072	-12.2
Other Meat (Fresh/Chilled/Frozen, Incl. Offal)	6,891	6,461	5,914	6,990	6,131	7,126	8,507	5,829	6,890	5,962	-13.5
Processed Meats	992	810	743	709	2,246	6,196	7,971	8,530	7,877	10,258	30.2
Crops	tonnes										% Change
Wheat	5,352,937	5,521,386	6,853,538	5,520,112	5,543,766	6,715,670	6,845,987	7,331,799	7,564,066	6,162,330	-18.5
Barley	633,519	1,009,681	523,893	303,706	409,112	601,395	572,566	625,826	565,012	441,605	-21.8
Oats	208,495	95,435	102,533	80,596	197,779	422,882	182,839	127,986	140,150	132,255	-5.6
Other Cereals Unmilled	66,865	21,390	26,569	26,739	43,741	43,897	66,293	13,359	43,711	19,697	-54.9
Hay and Fodder (Incl. Dehy Alfalfa Cubes)	453,492	285,200	235,978	145,294	202,445	354,701	310,781	279,894	247,266	243,711	-1.4
Potatoes, Seed and Other	46,172	11,525	22,795	25,473	28,039	26,239	29,927	40,417	36,118	60,551	67.6
Vegetables and Fruits	10,017	6,947	8,862	8,720	5,576	6,485	7,328	10,966	3,559	1,923	-46.0
Peas, Dried	71,485	13,216	13,535	97,402	254,514	392,257	219,720	173,652	119,716	179,057	49.6
Lentils	15,266	5,949	10,499	10,878	2,730	4,916	7,622	9,409	14,318	33,041	130.8
Other Dried Beans	40,807	30,369	22,989	18,721	25,147	46,377	37,467	41,998	53,366	54,677	2.5
Canola Seed	2,230,870	2,564,493	2,692,978	2,189,621	2,836,740	2,999,516	2,609,422	3,319,319	3,106,387	3,448,081	11.0
Mustard Seed	25,347	28,982	32,039	31,214	38,711	24,039	26,878	24,984	21,676	22,182	2.3
Linseed	13,671	17,667	15,173	18,752	14,907	33,702	48,057	43,233	73,051	55,215	-24.4
Other Oilseeds/Oilnuts/Kernels	781	1,900	1,810	942	1,389	32,209	2,143	2,752	1,928	2,617	35.8
Other Products	tonnes										% Change
Dairy Produce	2,145	1,312	127	1,162	490	2,020	235	808	70	203	191.3
Honey	3,038	6,200	4,261	4,110	2,168	2,566	2,507	2,840	3,640	8,031	120.6
Wheat or Meslin Flour	22,867	27,414	37,872	29,342	9,532	8,176	9,761	11,225	10,109	9,880	-2.3
Malt Roasted or not Roasted	355,812	399,476	313,013	273,084	288,653	291,858	272,435	349,959	326,516	323,340	-1.0
Other Cereals, Milled	52,307	42,638	62,936	61,640	61,148	80,215	92,438	83,500	94,719	87,276	-7.9
Cereal Preparations	15,842	16,397	16,443	13,684	10,859	9,111	8,734	10,196	13,225	12,923	-2.3
Vegetable and Fruit Preparations	2,223	2,491	1,949	1,778	2,415	1,505	2,107	4,631	6,049	7,261	20.0
Processed Potatoes	227,347	214,628	211,420	173,424	185,069	179,105	176,736	227,131	224,867	233,322	3.8
Oilseed Cake and Meal	624,790	695,165	639,668	836,522	735,274	724,411	662,717	775,080	809,280	736,835	-9.0
Alfalfa Meal and Pellets	22,236	217	118	34	298	14,163	3,211	2,813	2,224	2,621	17.9
Other Feeds of Vegetable Origin	26,014	25,954	29,169	29,893	25,799	38,752	58,227	58,364	48,009	38,786	-19.2
Prepared Animal Feeds	43,298	47,360	53,703	111,804	98,895	110,428	130,932	127,769	119,362	110,563	-7.4
Canola/Mustard Oil - Crude	391,471	192,038	452,929	653,533	454,701	510,524	367,146	186,330	366,743	587,580	60.2
Canola/Mustard Oil - Refined	105,992	162,008	111,245	105,181	108,041	134,178	121,544	124,022	93,603	93,420	-0.2
Other Oils, Fats and Waxes	16,494	28,601	15,582	15,825	27,675	50,545	52,279	86,444	83,312	78,940	-5.2
Tallow	25,228	38,895	26,664	40,637	109,987	126,103	117,415	111,278	117,130	149,309	27.5
Seeds for Sowing	30,583	24,308	15,465	13,541	15,973	17,390	17,937	14,714	15,144	17,985	18.8
Peat Moss	182,132	206,995	170,616	181,744	167,954	185,711	147,062	158,914	204,352	199,822	-2.2
	Litres										% Change
Fruit and Vegetable Juices	20,662,479	28,432,616	19,068,005	11,795,011	9,857,530	8,976,594	5,826,103	4,434,662	953	45,080	4630.3
Whiskey (LPA)*	21,277,590	28,558,583	30,235,158	33,148,502	32,220,879	36,904,424	36,553,594	33,510,166	32,330,400	35,230,889	9.0
Beer	2,187,950	2,993,385	2,290,336	5,408,106	2,317,437	-	11,179	35,191	9,948	56,560	468.6

*(Litres of Proof Alcohol)

r - revised p - preliminary

Source: Statistics Canada

Prepared by: Alberta Agriculture and Forestry, Economics and Competitiveness Branch, Statistics and Data Development Section

Table 4 - Alberta Agri-Food Exports by Country, 2007 - 2016, Value

	2007	2008	2009	2010	2011	2012	2013	2014r	2015r	2016p	2016/2015
	\$ Millions										% Change
All Countries (Total)	6,491.5	8,385.9	7,428.8	6,775.4	8,061.1	9,209.9	8,711.6	9,754.1	10,181.8	9,991.7	-1.9
1 United States	2,697.2	3,213.0	2,703.7	2,431.2	2,550.7	2,967.1	3,050.0	3,945.5	3,998.3	4,045.9	1.2
<i>% of Total</i>	41.5	38.3	36.4	35.9	31.6	32.2	35.0	40.4	39.3	40.5	
2 China	467.6	623.6	986.7	1,068.7	936.9	1,646.4	1,517.3	1,328.9	1,587.7	1,375.3	-13.4
<i>% of Total</i>	7.2	7.4	13.3	15.8	11.6	17.9	17.4	13.6	15.6	13.8	
3 Japan	906.6	1,195.6	919.3	827.6	1,171.5	1,346.0	1,288.4	1,197.4	1,101.0	1,225.6	11.3
<i>% of Total</i>	14.0	14.3	12.4	12.2	14.5	14.6	14.8	12.3	10.8	12.3	
4 Mexico	455.6	606.2	438.1	460.1	640.2	632.5	536.3	537.3	572.5	539.5	-5.8
5 Korea, South	118.3	148.6	117.5	146.2	296.5	174.0	114.1	227.7	232.5	236.8	1.8
6 Pakistan	86.1	125.1	61.9	99.0	169.9	45.3	0.1	63.0	124.1	231.8	86.9
7 Hong Kong	70.4	64.9	55.7	95.7	104.1	82.7	152.8	191.7	108.0	174.3	61.4
8 United Arab Emirates	71.1	116.0	90.0	123.3	200.6	172.6	88.3	103.9	132.7	153.6	15.8
9 Indonesia	142.8	195.8	113.3	95.1	139.7	168.9	220.1	190.2	213.6	152.7	-28.5
10 Bangladesh	86.7	60.9	116.6	131.3	153.7	107.5	103.7	110.1	156.9	142.2	-9.4
11 Colombia	50.8	48.9	61.9	57.5	100.5	109.4	97.9	130.5	106.3	128.4	20.8
12 Peru	37.8	49.8	77.5	65.0	66.5	69.6	90.9	131.3	150.0	111.8	-25.4
13 France	23.7	29.2	33.8	24.5	31.2	35.1	23.4	31.2	58.1	106.3	82.9
14 India	37.5	1.8	3.2	8.4	57.8	58.3	38.5	17.7	30.9	82.1	165.6
15 Italy	58.6	70.2	84.3	64.8	72.3	58.0	53.6	94.2	95.6	78.5	-17.9
16 Nigeria	2.3	5.3	27.8	17.4	18.1	43.4	59.6	75.4	75.0	67.8	-9.6
17 Singapore	12.5	9.8	13.0	15.4	13.4	21.0	38.5	36.9	26.7	66.3	147.9
18 Algeria	27.4	109.1	29.3	27.6	10.8	53.5	34.7	43.5	50.7	57.3	13.0
19 Sri Lanka	69.8	124.3	96.9	83.9	94.9	120.4	49.1	67.2	76.9	53.4	-30.6
20 Philippines	58.5	56.5	77.5	50.9	43.7	34.4	51.5	30.3	128.5	52.8	-58.9
21 Ecuador	32.0	38.8	45.6	38.0	64.6	63.0	51.7	39.5	59.7	46.3	-22.4
22 Venezuela	46.2	115.3	100.4	70.2	87.1	109.9	128.6	105.0	126.1	46.1	-63.5
23 Ghana	16.5	33.8	34.0	29.4	43.5	44.6	52.4	24.7	44.3	45.5	2.7
24 United Kingdom	54.1	69.2	48.2	33.2	47.2	57.0	52.8	38.6	49.6	44.0	-11.3
25 Morocco	27.1	38.3	49.6	20.6	19.0	39.2	44.5	40.2	31.6	42.0	32.9
26 Belgium	25.4	35.2	26.1	24.6	50.3	22.9	23.8	37.8	29.3	42.0	43.1
27 Germany	28.2	13.2	16.7	10.6	72.8	11.9	15.7	18.4	33.5	33.4	-0.4
28 Taiwan	84.1	70.6	64.6	65.0	50.3	35.7	33.3	42.2	40.4	31.1	-23.0
29 Malaysia	38.7	69.6	22.0	14.8	40.6	66.4	16.6	12.1	36.8	30.5	-17.1
30 Cuba	11.9	31.5	22.4	21.7	27.3	35.7	33.2	24.3	31.4	29.9	-4.6
31 Chile	13.6	40.2	44.0	15.8	24.5	32.1	20.0	75.3	57.3	28.4	-50.4
32 Netherlands	25.4	13.7	17.0	9.8	29.6	35.1	15.4	25.5	23.5	26.7	13.6
33 Guatemala	6.4	8.4	9.2	5.4	4.5	7.4	15.1	10.0	16.3	23.7	45.9
34 South Africa	48.7	57.6	23.8	29.9	49.3	25.8	12.9	17.3	31.3	21.3	-32.2
35 Brazil	47.1	66.1	45.0	36.8	8.5	3.4	60.3	30.0	4.1	21.0	413.0
36 Turkey	1.7	30.0	4.9	2.6	8.9	8.3	10.5	10.5	25.4	20.6	-19.2
37 Russian Federation	16.7	24.9	20.4	48.3	66.4	49.7	24.4	72.2	13.8	18.2	31.6
38 Thailand	39.8	23.4	21.8	14.4	49.3	28.8	19.9	15.1	37.7	17.9	-52.5
39 Spain	14.3	19.7	27.3	8.9	8.2	11.8	21.5	17.1	29.4	16.0	-45.6
40 Australia	19.3	26.8	29.0	35.0	40.7	32.2	27.1	21.2	26.1	15.9	-39.1
41 Switzerland	13.6	22.1	21.2	17.1	25.1	14.5	16.8	17.9	18.3	15.5	-15.5
42 Cameroon	4	5.2	8.2	6.1	6.2	10.8	11.6	15.6	18.8	15.2	-18.9
43 New Zealand	4.4	8.7	9.5	8.9	13.7	9.1	11.0	12.0	13.0	13.1	1.2
44 Kenya	0.0	5.3	0.1	0.0	6.8	4.3	12.1	11.7	8.5	13.1	53.7
45 Vietnam	50.5	37.2	7.5	13.5	11.7	23.5	32.7	11.5	38.8	12.4	-68.1
46 Sudan	61.4	72.7	32.4	31.6	47.6	44.8	54.5	76.4	27.2	12.1	-55.5
47 Saudi Arabia	56.6	112.4	167.6	72.4	97.0	85.8	24.7	88.1	46.0	12.0	-73.9
48 Portugal	1	0.5	18.5	15.5	34.5	14.6	2.9	8.1	16.1	11.5	-28.3
49 Sweden	0.7	1.6	1.9	2.6	2.4	2.5	5.1	7.0	10.0	11.4	13.6
50 Mozambique	2.4	1.6	0.0	1.2	0.0	6.2	13.6	23.9	11.5	11.3	-1.4
All Other	218.6	438.0	382.2	178.0	150.4	327.1	238.0	250.9	199.9	181.1	-9.4

r - revised p - preliminary

Source: Statistics Canada

Prepared by: Alberta Agriculture and Forestry, Economics and Competitiveness Branch, Statistics and Data Development Section

Table 5 - Alberta Agri-Food Exports to the United States, 2007 - 2016, Value

	2007	2008	2009	2010	2011	2012	2013	2014r	2015r	2016p	2016/2015
	\$ Millions										% Change
Agri-Food Exports to U.S	2,697.2	3,213.0	2,703.7	2,431.2	2,550.7	2,967.1	3,050.0	3,945.5	3,998.3	4,045.9	1.2
Animals and Crops	1,171.5	1,390.9	1,031.9	903.3	1,006.1	1,311.6	1,225.5	1,547.7	1,261.0	1,195.9	-5.2
Purebred Cattle	-	0.1	0.2	0.1	0.1	0.1	0.0	1.0	0.3	0.2	-33.0
Other Cattle (Excl. Purebred)	702.1	542.3	465.3	524.6	459.5	588.3	476.8	714.4	584.0	622.1	6.5
Live Hogs	53.8	49.9	38.4	40.2	42.0	38.9	45.2	61.8	53.1	54.1	1.9
Other Live Animals (Bison, Horses, Poultry)	21.1	22.7	22.4	18.7	14.9	16.4	16.2	27.8	36.4	37.3	2.3
Barley	35.2	103.4	54.1	13.7	21.2	63.5	59.2	66.6	67.7	37.2	-45.1
Wheat	143.6	364.0	252.5	150.2	194.6	280.9	342.6	326.4	260.0	171.4	-34.1
Oats	39.9	24.5	22.5	16.9	47.7	101.9	51.3	40.1	41.0	31.2	-23.9
Other Cereals Unmilled	7.2	6.4	5.0	4.6	10.4	19.8	10.7	6.4	5.3	5.8	8.2
Hay and Fodder (Incl. Dehy Alfalfa Cubes)	13.1	16.1	13.7	7.3	20.2	31.6	34.5	27.8	23.0	17.8	-22.4
Peas, Dried	0.4	1.7	0.2	0.2	0.9	2.1	7.5	25.6	5.6	10.4	84.9
Lentils	0.0	0.0	0.6	-	-	0.4	1.1	0.4	1.5	0.2	-86.0
Other Dried Beans	11.5	15.3	17.7	10.8	15.0	31.8	24.9	26.4	28.6	36.6	28.1
Potatoes, Seed and Other	13.6	3.2	7.4	7.4	9.5	10.3	11.0	20.9	26.3	52.4	99.2
Vegetables and Fruits	14.1	13.2	15.1	16.0	6.7	10.0	12.3	10.8	6.3	3.4	-46.8
Canola Seed	107.1	203.5	92.7	72.4	137.1	93.0	109.3	169.3	96.8	95.4	-1.4
Mustard Seed	7.1	20.6	20.5	17.5	20.0	11.5	11.4	13.5	12.4	13.8	11.5
Linseed	1.5	3.0	2.3	2.3	5.2	9.7	10.5	8.1	12.1	6.6	-45.3
Other Oilseeds/Oilnuts/Kernels	0.3	0.9	1.5	0.5	1.0	1.5	0.9	0.5	0.4	0.1	-78.2
Crude Animal and Plant Products	119.2	110.7	108.5	106.9	93.9	112.3	131.8	158.8	180.2	196.6	9.1
Raw Hides and Skins	9.6	8.3	3.7	15.1	6.8	7.0	8.7	9.3	5.0	4.1	-18.5
Fur Skins Undressed	0.1	0.0	0.0	0.0	0.0	0.0	0.0	0.0	0.0	0.2	N/A
Bovine Semen	15.7	11.8	13.7	12.8	13.4	12.8	16.7	24.1	19.0	31.3	64.4
Other Crude Animal Products	3.8	7.1	7.0	5.5	7.1	12.1	16.6	28.3	24.9	16.6	-33.0
Seeds for Sowing	45.1	39.7	31.3	23.7	22.7	29.7	38.0	36.6	45.8	52.4	14.4
Nursery Stock	0.4	0.3	0.3	0.3	0.2	0.4	0.4	0.2	0.3	0.3	26.0
Peat Moss	43.9	41.7	50.3	47.0	40.4	47.2	47.8	54.2	79.8	85.0	6.5
Other Crude Vegetable Products	0.7	1.8	2.2	2.5	3.3	3.1	3.7	6.2	5.5	6.8	23.6
Products of Manufacture	1,406.4	1,711.4	1,563.3	1,421.0	1,450.8	1,543.1	1,692.6	2,238.9	2,557.1	2,653.3	3.8
Beef (Fresh, Chilled, Frozen, Incl. Offal)	670.8	820.7	709.7	723.8	655.3	581.0	618.9	946.0	1,150.1	1,183.8	2.9
Pork (Fresh, Chilled, Frozen, Incl. Offal)	107.5	55.6	57.3	65.7	57.4	57.9	85.0	126.5	138.9	137.1	-1.3
Horse Meat (Fresh, Chilled, Frozen)	-	-	-	-	-	-	-	-	-	0.0	-
Other Meat (Fresh, Chilled, Frozen, Incl. Offal)	1.6	3.6	4.2	5.9	3.7	1.7	3.0	3.4	6.9	8.2	19.9
Processed Meats	3.9	1.2	3.0	2.7	2.9	4.2	6.0	7.3	10.3	12.9	24.8
Dairy Produce	0.0	0.1	0.2	0.1	0.1	0.2	-	-	0.1	0.2	121.9
Eggs	4.6	0.1	-	-	-	-	-	0.0	1.1	1.0	-4.8
Honey	5.3	7.6	9.1	7.3	3.1	6.0	6.6	4.9	9.6	22.9	137.2
Wheat or Meslin Flour	3.9	7.3	4.6	3.3	4.0	4.5	5.1	5.7	7.2	7.2	-0.6
Malt Roasted or not Roasted	37.0	73.8	74.1	54.7	45.0	48.7	71.2	116.5	108.2	104.1	-3.8
Other Cereals, Milled	24.0	28.5	23.3	20.4	27.3	30.1	35.5	42.5	48.3	45.0	-7.0
Cereal Preparations	35.6	38.6	39.8	36.4	34.3	31.5	32.3	36.3	47.4	49.0	3.5
Vegetable and Fruit Preparations	7.8	9.5	7.9	4.9	6.8	4.3	7.1	15.0	19.0	23.5	24.1
Fruit and Vegetable Juices	4.7	4.6	4.7	3.8	3.0	2.5	0.3	0.1	-	-	-
Processed Potatoes	153.2	147.1	174.3	131.0	137.6	159.3	183.6	204.7	239.4	242.8	1.4
Sugar and Sugar Preparations	8.6	24.2	10.9	8.5	28.0	21.3	9.4	10.7	14.7	7.7	-47.6
Food and Food Materials	26.6	28.9	30.9	29.6	37.6	36.2	25.5	30.9	33.5	35.6	6.2
Oilseed Cake and Meal	94.3	144.0	142.9	61.0	87.7	163.5	217.5	274.1	248.7	234.4	-5.7
Alfalfa Meal and Pellets	0.9	0.1	0.0	0.0	0.1	0.9	1.3	1.2	1.2	1.5	29.1
Other Feeds of Vegetable Origin	2.1	1.9	4.5	3.8	2.8	5.5	7.2	6.4	6.2	1.7	-72.5
Animal Feed Preparations	15.0	17.8	25.6	37.8	48.7	62.0	90.3	113.2	176.5	100.2	-43.3
Whiskey	34.0	38.1	38.5	39.8	34.6	40.7	43.7	45.4	49.8	46.4	-6.9
Beer	1.1	1.5	1.3	3.0	1.2	-	0.0	0.0	0.0	0.1	326.7
Other Beverages (Excl. Fruit Juices)	8.0	5.7	20.6	14.2	3.1	3.7	7.0	8.4	9.5	7.7	-19.6
Tallow	16.4	32.9	17.9	29.5	43.6	49.6	38.8	44.1	41.0	60.5	47.4
Canola/Mustard Oil - Crude	9.1	33.2	11.8	4.2	5.5	3.0	1.3	21.2	44.4	175.8	295.8
Canola/Mustard Oil - Refined	114.6	160.1	123.8	102.5	129.8	171.1	154.0	130.6	101.4	96.8	-4.5
Other Oils, Fats and Waxes	16.0	24.7	22.2	27.0	47.6	53.5	42.2	43.6	43.6	47.1	8.0
Other Products	0.0	-	-	0.0	0.0	-	0.0	-	-	0.2	-

r - revised p - preliminary

Source: Statistics Canada

Prepared by: Alberta Agriculture and Forestry, Economics and Competitiveness Branch, Statistics and Data Development Section

Table 6 - Alberta Agri-Food Exports to China, 2007 - 2016, Value

	2007	2008	2009	2010	2011	2012	2013	2014r	2015r	2016p	2016/2015
	\$ Thousands										% Change
Agri-Food Exports to China	467,648	623,559	986,665	1,068,655	936,883	1,646,416	1,517,298	1,328,928	1,587,700	1,375,309	-13.4
Animals and Crops	179,910	326,839	560,138	251,580	354,139	872,174	873,499	924,319	963,656	829,153	-14.0
Live hogs	-	-	-	-	-	300	-	-	-	-	-
Other Live Animals (Horses)	-	-	-	-	-	-	-	-	0	-	-
Barley	32,964	25,293	46,747	22,502	21,268	40,029	51,946	76,800	114,101	89,642	-21.4
Wheat	187	-	13,290	22,364	23,356	74,309	109,320	35,839	120,206	70,955	-41.0
Oats	1	-	-	-	2	6	8	12	290	329	13.2
Other Cereals Unmilled	2	-	34	12	-	-	-	-	-	34	-
Hay and Fodder (Incl. Dehy Alfalfa Cubes)	10	-	-	-	-	299	1,606	4,515	6,973	16,683	139.2
Peas, Dried	2,721	43	146	2,792	30,446	75,567	34,391	11,825	6,459	7,378	14.2
Lentils	-	-	-	-	-	14	41	405	207	313	51.5
Other Dried Beans	-	-	-	-	-	45	-	-	-	-	-
Vegetables and Fruits	-	-	354	1,527	-	160	-	921	-	-	-
Canola Seed	143,609	300,955	497,086	200,729	277,135	673,134	663,645	782,652	689,815	624,514	-9.5
Mustard Seed	8	-	28	26	34	29	48	33	43	47	8.9
Linseed	408	548	2,453	1,627	1,898	8,283	12,494	11,316	25,562	19,259	-24.7
Crude Animal and Plant Products	60,946	61,302	53,239	89,184	128,019	137,777	175,180	210,090	145,220	170,655	17.5
Raw Hides and Skins	57,732	59,025	47,101	81,214	122,482	132,231	170,577	201,606	137,770	165,262	20.0
Fur Skins Undressed	-	-	-	-	-	-	-	7	-	-	-
Bovine Semen	1,150	499	1,179	670	878	2,914	2,687	5,905	4,207	1,489	-64.6
Other Crude Animal Products	1,824	1,371	4,644	6,880	4,034	1,860	1,221	1,574	2,874	2,676	-6.9
Seeds for Sowing	223	384	260	421	581	728	653	487	244	951	290.0
Nursery Stock	-	-	-	-	-	15	-	-	-	-	-
Peat Moss	-	4	8	-	18	27	-	-	15	-	-
Other Crude Vegetable Products	17	19	47	-	25	3	42	511	110	277	151.0
Products of Manufacture	226,792	235,418	373,288	727,891	454,725	636,465	468,618	194,519	478,824	375,500	-21.6
Beef (Fresh, Chilled, Frozen, Incl. Offal)	106	-	-	3	-	4,686	25,929	39,023	234,879	59,115	-74.8
Pork (Fresh, Chilled, Frozen, Incl. Offal)	3,255	4,362	564	95	2,759	3,726	740	967	22,456	17,263	-23.1
Horse Meat (Fresh, Chilled, Frozen)	-	-	-	-	-	-	-	-	-	37	-
Other Meat (Fresh, Chilled, Frozen, Incl. Offal)	63	-	-	27	154	-	-	-	-	-	-
Processed Meats	-	-	-	-	-	-	-	-	26	-	-
Dairy Produce	-	-	-	-	3	-	-	-	-	-	-
Honey	-	36	221	121	385	257	400	224	385	201	-47.9
Wheat or Meslin Flour	201	126	24	-	19	-	18	60	-	447	-
Malt Roasted or not Roasted	-	-	-	-	-	-	13	-	-	-	-
Other Cereals, Milled	16	2	-	1	13	10	172	189	-	-	-
Cereal Preparations	-	1	3	3	-	-	-	-	-	6	-
Fruit and Vegetable Juices	3	-	-	-	-	-	-	-	-	146	-
Processed Potatoes	13,299	6,147	3,391	1,994	6,102	4,211	6,793	27,195	19,633	19,921	1.5
Sugar and Sugar Preparations	-	-	-	-	-	-	-	7	-	-	-
Food and Food Materials	277	159	71	94	76	33	137	338	409	457	11.9
Oilseed Cake and Meal	102	11	1,011	102,981	74,587	56,415	-	-	4	-	-
Animal Feed Preparations	3,031	128	269	-	1,269	-	196	188	98	3,347	N/A
Whiskey	-	-	-	-	19	32	-	-	83	182	-
Other Beverages (Excl. Fruit Juices)	-	23	20	117	91	146	137	2	20	184	823.0
Tallow	-	-	-	-	-	-	-	-	-	191	-
Canola/Mustard Oil - Crude	206,327	171,712	365,852	622,451	369,241	565,043	432,438	124,511	197,714	266,704	34.9
Canola/Mustard Oil - Refined	-	50,718	-	-	-	1,880	1,646	1,800	3,024	6,645	119.7
Other Oils, Fats and Waxes	114	1,993	1,863	5	5	26	-	17	94	653	593.6

N/A - not applicable

0 (zero) refers to value lower than \$500.

r - revised p - preliminary

Source: Statistics Canada

Prepared by: Alberta Agriculture and Forestry, Economics and Competitiveness Branch, Statistics and Data Development Section

Table 7 - Alberta Agri-Food Exports to Japan, 2007 - 2016, Value

	2007	2008	2009	2010	2011	2012	2013	2014r	2015r	2016p	2016/2015
	\$ Thousands										% Change
Agri-Food Exports to Japan	906,621	1,195,606	919,261	827,649	1,171,516	1,345,995	1,288,407	1,197,409	1,100,971	1,225,639	11.3
Animals and Crops	594,172	836,627	520,075	444,168	743,419	888,568	878,333	719,999	607,921	668,226	9.9
Purebred Cattle	-	-	-	-	-	-	-	-	-	-	-
Live Hogs	-	-	-	-	-	-	-	-	-	-	-
Other Live Animals (Horses)	13,841	11,574	7,218	9,277	5,078	7,081	9,671	13,515	15,917	15,649	-1.7
Barley	15,447	45,883	18,573	12,584	37,161	49,156	40,830	34,081	12,990	8,205	-36.8
Wheat	94,465	189,182	103,779	85,176	157,227	219,647	203,503	187,833	159,764	189,343	18.5
Oats	1,298	449	446	484	1,832	3,085	1,698	762	966	933	-3.4
Other Cereals Unmilled	4,828	1,225	854	1,210	3,688	636	14,561	37	252	837	232.5
Hay and Fodder (Incl. Dehy Alfalfa Cubes)	103,594	64,449	58,972	42,296	38,149	67,417	58,276	57,927	55,851	45,169	-19.1
Peas, Dried	681	410	734	380	395	642	935	937	1,788	1,105	-38.2
Lentils	7	-	-	1	73	116	-	-	-	-	-
Other Dried Beans	340	189	55	22	-	-	45	230	163	95	-42.1
Vegetables and Fruits	-	225	15	450	74	-	95	-	-	94	-
Canola Seed	357,021	519,524	323,246	287,145	495,422	537,188	544,378	420,946	356,808	403,039	13.0
Mustard Seed	2,404	3,302	6,076	4,756	4,164	3,304	3,943	3,483	3,224	3,495	8.4
Linseed	136	185	73	387	120	237	396	204	181	215	18.9
Other Oilseeds/Oilnuts/Kernels	110	32	33	-	35	59	-	45	18	49	176.4
Crude Animal and Plant Products	7,217	6,141	3,127	3,404	3,525	5,076	3,612	4,508	5,769	3,076	-46.7
Raw Hides and Skins	6,465	4,550	1,539	1,961	1,951	2,805	1,761	2,393	2,207	912	-58.7
Fur Skins Undressed	-	15	-	-	-	0	-	-	-	-	-
Bovine Semen	303	839	1,078	1,062	884	1,400	1,412	1,256	2,484	1,639	-34.0
Other Crude Animal Products	89	-	72	37	9	6	23	163	123	45	-63.2
Seeds for Sowing	186	325	141	175	124	459	271	559	782	253	-67.7
Peat Moss	174	412	297	169	553	405	139	132	174	215	23.7
Other Crude Vegetable Products	-	-	-	-	4	-	5	4	-	13	-
Products of Manufacture	305,232	352,838	396,059	380,078	424,571	452,352	406,462	472,901	487,281	554,336	13.8
Beef (Fresh, Chilled, Frozen, Incl. Offal)	19,525	30,739	47,443	64,515	56,946	60,772	56,871	73,270	65,076	118,450	82.0
Pork (Fresh, Chilled, Frozen, Incl. Offal)	156,613	169,652	196,507	203,144	192,646	178,542	153,310	189,024	198,976	212,978	7.0
Horse Meat (Fresh, Chilled, Frozen)	16,803	16,926	18,571	14,735	13,992	17,058	17,919	20,350	24,556	26,868	9.4
Other Meat (Fresh, Chilled, Frozen, Incl. Offal)	-	-	-	0	96	38	30	419	70	-	-100.0
Processed Meats	812	382	0	-	5,401	18,097	22,375	26,477	22,988	29,273	27.3
Dairy Produce	-	-	-	264	-	998	-	-	-	-	-
Honey	684	3,951	4,545	6,108	4,813	4,464	5,771	9,832	10,236	9,872	-3.6
Wheat or Meslin Flour	21	-	-	-	-	-	-	-	-	-	-
Malt Roasted or not Roasted	52,338	72,722	80,201	52,422	55,601	67,201	70,383	68,358	80,613	82,325	2.1
Other Cereals, Milled	120	128	362	309	126	747	2,728	650	1,178	1,643	39.4
Cereal Preparations	532	402	130	132	-	-	43	149	646	628	-2.8
Vegetable and Fruit Preparations	-	41	-	-	-	-	-	-	-	-	-
Processed Potatoes	34,041	30,208	28,227	23,960	26,888	17,753	5,331	21,783	32,439	21,600	-33.4
Sugar and Sugar Preparations	23	56	10	19	15	27	4	-	2	6	-
Food and Food Materials	2,365	2,609	2,160	1,366	1,526	2,951	2,761	2,790	2,627	3,131	19.2
Oilseed Cake and Meal	-	10	112	5	88	62	687	91	149	189	26.7
Alfalfa Meal and Pellets	2,650	-	-	-	-	3,437	-	-	-	-	-
Other Feeds of Vegetable Origin	1,522	872	2,574	1,930	726	522	2,123	2,728	1,942	2,082	7.2
Animal Feed Preparations	415	639	600	1,139	1,407	1,743	2,336	3,766	6,279	9,464	50.7
Whiskey	12	10	20	20	1,510	13,950	10,078	5,950	2,610	668	-74.4
Other Beverages (Excl. Fruit Juices)	236	613	1,001	860	25	-	468	1,038	569	991	74.3
Tallow	-	-	-	-	48,753	48,182	38,591	36,091	25,123	20,126	-19.9
Canola/Mustard Oil - Crude	8,423	4,726	1,709	372	1,445	4,148	3,070	-	898	-	-
Canola/Mustard Oil - Refined	3,331	11,957	5,976	2,700	5,875	5,124	4,844	4,032	3,300	5,010	51.8
Other Oils, Fats and Waxes	4,768	6,196	5,910	6,078	6,689	6,536	6,738	6,101	7,005	9,036	29.0

0 (zero) refers to value lower than \$500.

r - revised p - preliminary

Source: Statistics Canada

Prepared by: Alberta Agriculture and Forestry, Economics and Competitiveness Branch, Statistics and Data Development Section

Table 8 - Alberta Agri-Food Exports to Mexico, 2007 - 2016, Value

	2007	2008	2009	2010	2011	2012	2013	2014r	2015r	2016p	2016/2015
	\$ Thousands										% Change
Agri-Food Exports to Mexico	455,580	606,214	438,059	460,144	640,239	632,455	536,302	537,275	572,487	539,546	-5.8
Animals and Crops	273,577	402,199	267,422	266,858	415,896	482,458	409,211	353,908	347,716	334,801	-3.7
Purebred Cattle	-	-	-	-	-	-	-	878	341	149	-56.3
Other Cattle (Excl. Purebred)	-	-	-	3	-	-	-	336	1,069	452	-57.7
Sheep, Goats and Horses, Live	-	-	-	-	0	1	10	-	0	-	-
Barley	4,708	14,589	3,423	-	3,993	8,535	374	335	-	173	-
Wheat	76,487	70,831	97,089	72,384	108,327	123,133	125,456	103,724	93,414	83,498	-10.6
Oats	1,366	190	99	111	340	2,173	286	18	814	2,380	192.3
Other Cereals Unmilled	154	-	-	5	-	-	-	-	-	-	-
Peas, Dried	49	-	-	-	-	-	36	38	-	-	-
Lentils	-	-	-	-	-	93	-	-	-	-	-
Other Dried Beans	419	-	273	74	-	1,526	1,994	-	-	-	-
Potatoes, Seed and Other	2,151	593	1,332	1,359	1,436	1,302	926	595	-	-	-
Canola Seed	188,205	315,929	165,134	192,865	301,670	345,461	279,748	247,767	251,830	247,982	-1.5
Linseed	39	68	72	58	129	235	380	217	249	168	-32.3
Crude Animal and Plant Products	6,649	10,880	8,828	10,487	7,305	8,874	8,909	11,369	16,010	18,155	13.4
Raw Hides and Skins	-	21	1	6	7	2	2	0	0	69	N/A
Fur Skins Undressed	-	-	-	1	0	1	1	-	-	-	-
Bovine Semen	148	132	77	957	185	66	88	386	1,080	1,072	-0.7
Other Crude Animal Products	6,497	10,727	8,751	9,519	7,112	8,805	8,819	10,980	14,927	17,014	14.0
Peat Moss	4	-	-	4	-	-	-	-	-	-	-
Other Crude Vegetable Products	-	-	-	-	-	-	-	3	3	-	-100.0
Products of Manufacture	175,354	193,135	161,809	182,798	217,038	141,123	118,181	171,998	208,761	186,590	-10.6
Beef (Fresh, Chilled, Frozen, Incl. Offal)	140,916	144,483	137,472	152,643	133,800	103,598	84,221	136,318	142,594	97,883	-31.4
Pork (Fresh, Chilled, Frozen, Incl. Offal)	11,615	12,165	3,851	7,518	3,465	4,210	10,385	9,157	9,863	15,938	61.6
Horse Meat (Fresh, Chilled, Frozen)	1,897	677	893	698	17	-	-	-	-	-	-
Other Meat (Fresh, Chilled, Frozen, Incl. Offal)	40	42	45	107	239	77	-	98	70	-	-100.0
Processed Meats	190	360	160	93	228	551	-	29	-	36	-
Dairy Produce	3,815	-	-	-	1,400	625	-	-	-	-	-
Malt Roasted or not Roasted	-	15,436	3,957	-	-	-	-	7,356	21,001	42,633	103.0
Other Cereals, Milled	330	643	472	1,482	2,897	5,456	2,455	4,929	11,453	10,285	-10.2
Vegetable and Fruit Preparations	-	-	-	1	-	-	-	-	-	-	-
Fruit and Vegetable Juices	4,051	4,918	4,598	4,419	4,373	4,399	4,597	3,531	-	-	-
Processed Potatoes	5,348	4,916	6,398	5,746	5,779	8,872	5,387	3,440	3,590	4,004	11.5
Sugar and Sugar Preparations	5,828	7,569	1,212	6,069	11,501	12,706	8,400	-	2,900	8,197	182.7
Food and Food Materials	512	0	19	-	1	-	-	432	-	0	-
Oilseed Cake and Meal	-	-	841	2,702	1,379	66	-	-	-	-	-
Alfalfa Meal and Pellets	35	-	-	-	-	-	-	-	-	-	-
Animal Feed Preparations	-	-	-	3	-	-	-	-	-	-	-
Whiskey	-	-	-	-	200	53	105	129	312	153	-50.8
Other Beverages (excl. Fruit Juices)	-	3	-	108	-	-	-	298	6,214	6,418	3.3
Tallow	-	-	-	6	69	-	-	4,420	9,142	-	-100.0
Canola/Mustard Oil - Crude	-	1,756	1,384	-	50,827	-	-	-	-	-	-
Canola/Mustard Oil - Refined	318	141	137	15	-	-	-	-	-	-	-
Other Oils, Fats and Waxes	459	26	371	1,187	864	511	2,632	1,861	1,622	1,041	-35.8

N/A - not applicable

0 (zero) refers to value lower than \$500.

r - revised p - preliminary

Source: Statistics Canada

Prepared by: Alberta Agriculture and Forestry, Economics and Competitiveness Branch, Statistics and Data Development Section

Table 9 - Alberta Agri-Food Exports to South Korea, 2007 - 2016, Value

	2007	2008	2009	2010	2011	2012	2013	2014r	2015r	2016p	2016/2015
	\$ Thousands										% Change
Agri-Food Exports to S. Korea	118,320	148,563	117,486	146,188	296,539	174,005	114,134	227,718	232,542	236,825	1.8
Animals and Crops	20,092	31,025	25,596	73,106	189,561	74,514	40,960	83,390	30,786	30,767	-0.1
Purebred Cattle	593	300	577	-	294	540	652	1,081	360	1,180	227.8
Live Hogs	-	-	-	-	126	-	-	-	-	-	-
Other Live Animals (Live Horses)	-	-	-	-	-	-	-	24	-	-	-
Barley	-	1,360	1	-	-	-	-	29	107	49	-54.3
Wheat	8,643	24,527	20,338	71,070	183,492	55,974	33,081	74,987	23,577	21,359	-9.4
Oats	31	5	9	1	68	139	108	436	507	453	-10.6
Other Cereals Unmilled	1,004	153	1,448	272	460	1,237	560	304	207	48	-76.9
Hay and Fodder (Incl. Dehy Alfalfa Cubes)	9,413	4,063	2,020	297	3,500	8,469	6,000	6,248	5,647	5,700	0.9
Peas, Dried	-	-	-	59	-	-	-	-	-	839	-
Lentils	-	-	-	-	58	54	-	-	-	2	-
Other Dried Beans	113	-	71	375	177	220	185	50	139	76	-45.5
Canola Seed	-	-	-	20	-	7,091	-	-	-	17	-
Mustard Seed	291	607	1,122	998	1,360	753	324	150	25	161	539.9
Linseed	5	10	10	13	26	37	51	81	216	831	283.9
Other Oilseeds/Oilnuts/Kernels	-	-	-	-	-	-	-	-	-	53	-
Crude Animal and Plant Products	29,269	37,107	16,829	11,154	18,364	10,106	9,992	28,067	65,365	28,735	-56.0
Raw Hides and Skins	29,000	36,567	16,523	10,714	16,693	8,779	9,394	27,264	64,490	28,257	-56.2
Bovine Semen	159	189	164	143	540	566	330	430	724	219	-69.7
Other Crude Animal Products	73	191	-	-	143	-	-	44	-	2	-
Seeds for Sowing	-	-	50	217	875	12	-	-	-	-	-
Peat Moss	36	141	93	79	72	284	29	22	85	-	-100.0
Other Crude Vegetable Products	-	18	-	-	41	465	239	307	65	256	291.4
Products of Manufacture	68,959	80,432	75,062	61,928	88,615	89,385	63,182	116,261	136,392	177,323	30.0
Beef (Fresh, Chilled, Frozen, Incl. Offal)	-	-	-	-	45	7,361	6,905	22,953	3,710	36,119	873.6
Pork (Fresh, Chilled, Frozen, Incl. Offal)	28,018	31,058	27,725	28,658	43,205	35,173	26,637	35,862	43,197	45,929	6.3
Other Meat (Fresh, Chilled, Frozen, Incl. Offal)	-	-	-	-	-	-	-	6	-	-	-
Processed Meats	-	-	-	-	-	-	90	-	-	6	-
Dairy Products	-	-	-	-	-	-	4	-	26	-	-100.0
Honey	149	126	12	7	10	200	-	-	208	-	-100.0
Wheat or Meslin Flour	4,241	9,138	15,423	11,404	1,906	318	307	277	289	209	-27.4
Malt Roasted or not Roasted	8,627	7,016	9,843	1,377	7,857	13,258	8,302	14,418	11,087	1,532	-86.2
Other Cereals, Milled	9	105	52	-	15	133	292	825	309	325	5.2
Cereal Preparations	1,057	221	1,658	1,705	746	431	524	583	833	485	-41.7
Vegetable and Fruit Preparations	-	-	30	67	65	-	-	-	-	-	-
Processed Potatoes	2,117	9,097	7,080	1,693	1,141	228	139	1,748	9,761	16,105	65.0
Sugar and Sugar Preparations	0	-	-	-	-	-	-	-	-	262	-
Other Food/Food Materials	716	378	443	253	258	1,008	508	296	565	877	55.3
Oilseed Cake and Meal	103	230	-	390	592	307	252	272	-	16	-
Alfalfa Meal and Pellets	6	-	-	-	-	-	-	-	-	-	-
Other Feeds of Vegetable Origin	665	203	438	469	841	797	3,174	6,133	5,527	4,877	-11.8
Animal Feed Preparations	-	37	-	89	483	1,051	1,343	2,026	3,118	3,923	25.9
Whiskey	-	-	-	-	-	-	-	-	-	9	-
Wines and Fermented Beverages	72	127	93	32	5	5	26	8	5	-	-100.0
Tallow	-	-	-	-	13,828	4,821	-	-	-	-	-
Canola/Mustard Oil - Crude	20,073	16,914	9,393	12,293	14,217	9,830	6,346	10,850	50,282	64,224	27.7
Canola/Mustard Oil - Refined	2,308	4,838	2,513	3,488	3,153	2,432	2,051	4,366	2,231	2,064	-7.5
Other Oils, Fats and Waxes	796	943	359	4	248	12,034	6,282	15,637	5,245	360	-93.1

0 (zero) refers to value lower than \$500.

r - revised p - preliminary

Source: Statistics Canada

Prepared by: Alberta Agriculture and Forestry, Economics and Competitiveness Branch, Statistics and Data Development Section

Table 10 - Alberta Agri-Food Exports to European Union Countries (EU 28) by Country, 2007 - 2016

	2007	2008	2009	2010	2011	2012	2013	2014r	2015r	2016p	2016/2015
Value	\$ Thousands										% Change
All Countries (Total)	6,491,477	8,385,912	7,428,837	6,775,409	8,061,065	9,209,942	8,711,642	9,754,059	10,181,765	9,991,742	-1.9
Exports to EU (28)	253,637	280,014	294,797	217,437	370,414	279,708	243,750	307,124	381,707	405,220	6.2
% of Total	3.9	3.3	4.0	3.2	4.6	3.0	2.8	3.1	3.7	4.1	
1 France	23,740	29,241	33,800	24,474	31,234	35,057	23,403	31,194	58,095	106,278	82.9
2 Italy	58,608	70,212	84,327	64,771	72,279	58,009	53,574	94,197	95,577	78,501	-17.9
3 United Kingdom	54,148	69,165	48,181	33,238	47,166	57,019	52,831	38,556	49,578	43,985	-11.3
4 Belgium	25,434	35,159	26,105	24,623	50,251	22,943	23,827	37,803	29,321	41,960	43.1
5 Germany	28,211	13,168	16,731	10,592	72,815	11,858	15,668	18,382	33,507	33,365	-0.4
6 Netherlands	25,372	13,702	17,001	9,768	29,580	35,060	15,446	25,506	23,499	26,693	13.6
7 Spain	14,288	19,666	27,328	8,884	8,169	11,826	21,470	17,084	29,421	16,017	-45.6
8 Portugal	966	546	18,455	15,539	34,463	14,636	2,871	8,127	16,083	11,524	-28.3
9 Sweden	678	1,577	1,905	2,640	2,358	2,511	5,144	6,976	10,027	11,387	13.6
10 Poland	882	416	551	143	2,149	4,046	6,173	5,663	8,201	11,328	38.1
11 Greece	5,888	5,097	2,022	2,431	4,903	7,629	6,097	7,241	7,178	5,406	-24.7
12 Czech Republic	4,914	8,517	6,443	7,154	4,293	5,049	4,455	4,146	7,312	4,956	-32.2
13 Finland	534	1,720	599	938	1,368	2,880	3,472	4,277	5,416	3,516	-35.1
14 Denmark	2,402	4,902	5,192	6,030	4,867	2,090	2,461	1,683	2,023	2,748	35.9
15 Hungary	1,107	1,429	2,627	2,682	2,325	2,381	2,090	1,711	1,866	1,830	-1.9
16 Romania	121	32	83	-	-	-	718	971	1,122	1,616	44.0
17 Lithuania	222	582	1,178	696	606	1,087	766	865	937	1,116	19.0
18 Latvia	523	1,022	321	841	409	596	374	279	574	756	31.8
19 Cyprus	35	1	109	46	185	292	807	1,028	423	525	24.2
20 Slovakia	221	319	44	39	260	-	-	12	-	515	-
21 Bulgaria	34	209	100	104	96	95	209	233	317	348	9.8
22 Croatia	36	27	195	483	197	166	207	371	511	280	-45.2
23 Ireland, Republic of (EIRE)	4,759	2,993	1,152	968	384	4,302	1,087	611	478	228	-52.4
24 Malta	58	-	26	11	-	-	388	92	176	184	4.8
25 Austria	251	179	244	183	10	3	100	0	17	75	341.5
26 Luxembourg	168	67	70	13	30	16	20	103	47	72	54.3
27 Estonia	1	68	10	145	16	-	16	13	4	11	215.6
28 Slovenia	36	-	-	-	-	158	77	-	-	-	-

Table 11 - Alberta Agri-Food Exports to EU 28 by Product, 2007 - 2016

	2007	2008	2009	2010	2011	2012	2013	2014r	2015r	2016p	2016/2015
Value	\$ Thousands										% Change
Exports to EU (28)	253,637	280,014	294,797	217,437	370,414	279,708	243,750	307,124	381,707	405,220	6.2
-- Primary Commodities	169,668	201,756	215,209	137,449	215,977	193,168	144,010	203,545	256,010	263,121	2.8
-- Value Added Products	83,969	78,259	79,588	79,988	154,436	86,540	99,740	103,579	125,697	142,099	13.0
Top Export Products											
1 Wheat	138,668	180,348	185,643	110,739	132,884	134,141	121,008	168,150	169,891	132,521	-22.0
2 Canola Seed	622	515	15,020	17,331	71,925	22,716	14	10,996	58,117	105,780	82.0
3 Prepared Animal Feeds	10,813	21,946	23,061	29,885	27,335	31,149	43,079	49,122	75,308	89,120	18.3
4 Whiskey	352	887	537	2,846	13,213	13,012	13,291	13,065	12,856	13,742	6.9
5 Horse Meat (Fresh/Chilled/Frozen)	19,046	21,220	25,883	21,315	16,280	15,349	10,969	15,549	13,600	13,393	-1.5
6 Dried Beans (1)	8,078	3,952	1,487	1,494	4,886	9,368	6,755	9,744	11,637	10,321	-11.3
7 Bovine Semen	3,786	5,436	6,176	5,335	7,163	8,056	9,776	11,692	9,403	9,798	4.2
8 Seeds for Sowing	5,674	7,725	3,402	833	4,850	6,502	5,315	4,605	4,317	6,369	47.5
9 Linseed	3,151	8,640	2,817	3,896	2,107	2,262	8,218	8,133	9,817	5,536	-43.6
10 Beef (Fresh/Chilled/Frozen, Incl. Offal)	967	349	1,235	3,063	6,427	5,292	6,291	7,158	4,433	3,133	-29.3
Top 10 Products	191,155	251,018	265,262	196,736	287,071	247,846	224,716	298,212	369,378	389,153	5.4
% of Total	75.4	89.6	90.0	90.5	77.5	88.6	92.2	97.1	96.8	96.0	

(1) Excludes dry peas and lentils.

r - revised p - preliminary

Source: Statistics Canada

Prepared by: Alberta Agriculture and Forestry, Economics and Competitiveness Branch, Statistics and Data Development Section