

Agri-Food Exports

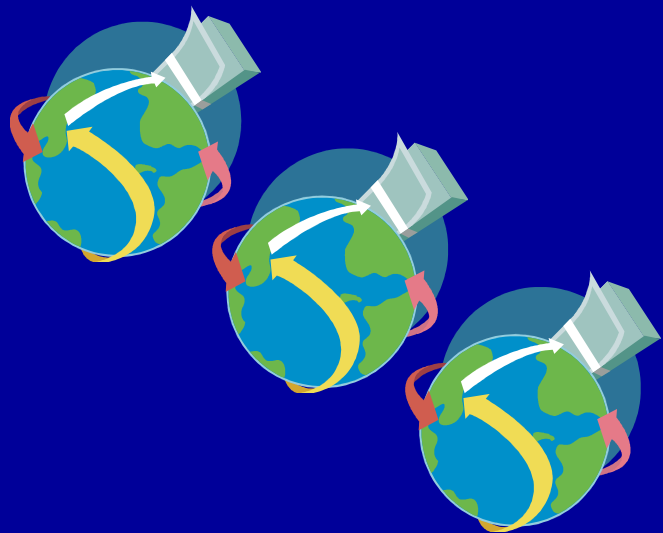
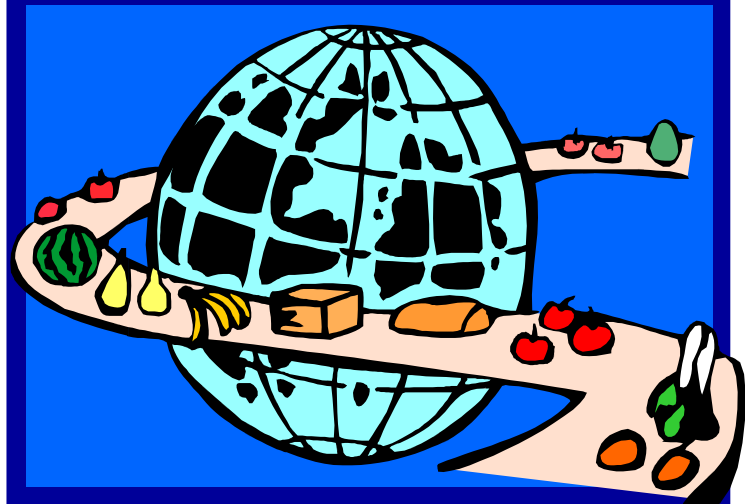
Alberta 2006 to 2015

Highlights on Alberta Agri-Food Exports in 2015

Tables:

Alberta Agri-Food Exports, 2006-2015:

- Top 5 Export Products and Markets
- All Products (Value and Quantity)
- Top 50 Markets
- Exports to the United States
- Exports to China
- Exports to Japan
- Exports to Mexico
- Exports to South Korea
- Exports to EU and TPP Countries



Alberta Agri-Food Exports, 2006 to 2015 (1)

Table of Content		Page
	Highlights on Alberta Agri-Food Exports in 2015	1
Tables		
1	Alberta Agri-Food Exports, Top Products and Markets, 2006-2015, Value	2
2	Alberta Agri-Food Exports by Product, 2006-2015, Value	3
3	Alberta Agri-Food Exports by Product, 2006-2015, Quantity	4
4	Alberta Agri-Food Exports by Country, 2006-2015, Value	5
5	Alberta Agri-Food Exports to the United States, 2006-2015, Value	6
6	Alberta Agri-Food Exports to China, 2006-2015, Value	7
7	Alberta Agri-Food Exports to Japan, 2006-2015, Value	8
8	Alberta Agri-Food Exports to Mexico, 2006-2015, Value	9
9	Alberta Agri-Food Exports to South Korea, 2006-2015, Value	10
10	Alberta Agri-Food Exports to EU 28, 2006-2015 Value	11
11	Alberta Agri-Food Exports to TPP Countries, 2006-2015, Value	11

(1) 2015 trade statistics are subject to revisions.

Note to Users: *The contents of this document may not be used or reproduced without properly accrediting Alberta Agriculture and Forestry, Economics and Competitiveness Branch, Statistics and Data Development Section.*

If you require more information or have any questions regarding this document please contact: the Statistics and Data Development Section, at 780-427-4011

June 28, 2016

Prepared by: Barbara Pekalski, Trade Research Statistician, phone: 780-427-5386, e-mail: barb.pekalski@gov.ab.ca
 Alberta Agriculture and Forestry, Economics and Competitiveness Branch, Statistics and Data Development Section

Highlights on Alberta Agri-Food Exports in 2015

In 2015, Alberta exports of primary and processed agricultural and food products (agri-food) set a new record at \$10.2 billion, surpassing the 2014 record by 4.5 per cent. Gains were reported mainly in exports of value added products, owing to relatively high meat prices and the low Canadian dollar. Nationally, Alberta accounted for 18.0 per cent of the Canadian total, and remained the third largest exporter of agri-food products after Saskatchewan and Ontario.

Export Products

Exports of value added products rose for the second consecutive year, up 12.5 per cent to \$4.8 billion and represented 47.2 per cent of Alberta's total. Meats were the largest value added export, followed by french fries, canola oil, prepared animal feeds, canola cake and meal, and malt. **Exports of primary commodities** (animals and crops), declined about 2.0 per cent to \$5.4 billion in 2015, and accounted for 52.8 per cent of Alberta's total exports. The decline was a result of lower exports of oilseeds and live cattle.

In the crop sector, exports of major grains were slightly higher, while exports of oilseeds were lower in both, value and quantity in 2015. Wheat exports rose 3.6 per cent in value and 3.1 per cent in quantity. Top markets for wheat were the United States, Indonesia, Japan, Peru and Bangladesh. Exports of canola seed declined 5.1 per cent in value and 6.4 per cent in quantity. For the third consecutive year, China was the largest market for canola seed, followed by Japan, Mexico and Pakistan. Among the other crops, declines were reported dry peas, mustard seed and hay and fodder.

In the livestock sector, as a result of high prices, exports of beef rose 18.7 per cent to \$1.7 billion with quantity up 2.1 per cent. While beef exports rose, exports of live cattle (excluding purebred) fell 18.1 per cent in value from the 2014 high, and the quantity was down 37.3 per cent. On the other hand, exports of live hogs increased in quantity but declined in value. Pork exports grew marginally in value, while quantity rose at a higher rate. The United States was Alberta's largest market for live cattle, hogs and beef.

Trading Partners

In 2015, Alberta's top export markets for agri-food products were the United States, China, Japan, Mexico and South Korea. Exports to these five countries were worth \$7.5 billion, representing almost three-quarters of Alberta's total agri-food exports.

The United States (US) continues to be Alberta's largest trading partner, accounting for 39.3 per cent of the total agri-food exports. In 2015, exports to this market were almost \$4.0 billion. Substantial increases occurred in exports of value added products such as meats, crude canola oil, prepared animal feed, french fries and processed cereals. These increases moderated declines in primary commodity exports. Commodity exports fell 18.6 per cent from 2014, mainly due to lower export values and quantities of major crops and live animals. The US remained Alberta's sole export market for non-purebred live cattle and hogs and accounted for almost 70.0 per cent of the province's total beef exports (quantity).

Exports to China, Alberta's second largest market in 2015, grew 19.5 per cent to \$1.6 billion. The growth was a result of significantly larger exports of beef, crude canola oil and wheat. In 2012 and 2013, crude canola oil was the second largest export to China, after canola seed. In 2015, beef became the second largest export, growing from \$39 million in 2014 to \$235 million. Exports of canola seed fell 11.9 per cent to \$690 million. Canola seed, beef and crude canola oil combined, made up over 70.0 per cent of Alberta's total agri-food exports to China.

Exports to Japan, Alberta's third largest market, fell for the third year in a row, down 8.1 per cent to \$1.1 billion in 2015. Lower exports of canola seed, wheat, barley and beef, contributed to the decline. Canola seed (\$357 million), the largest export to Japan, fell 15.2 per cent in value and 16.4 per cent in quantity. Moderating these declines were higher exports of pork, horse meat, malt, french fries and processed cereals. Pork, the second largest export to this market rose 5.3 per cent to \$199.0 million.

Exports to Mexico, Alberta's fourth largest market, rose 6.6 per cent to \$572 million in 2015. Larger exports of beef, pork, malt, milled cereals and canola seed, partially offset lower exports of wheat. Beef exports grew 4.6 per cent to \$143 million, and canola was up 1.6 per cent to \$252 million. Canola seed, beef and wheat combined, made up 85.2 per cent of Alberta's total agri-food exports to this market.

Exports to South Korea, Alberta's fifth largest export market, grew by 2.1 per cent to \$233 million in 2015. Substantial increases were reported in exports of hides and skins, crude canola oil and pork. Moderating these increases were lower exports of wheat, beef and malt. Wheat, Alberta's top export product to South Korea in 2014, fell 68.6 per cent to \$23.6 million, from \$75.0 million in 2015.

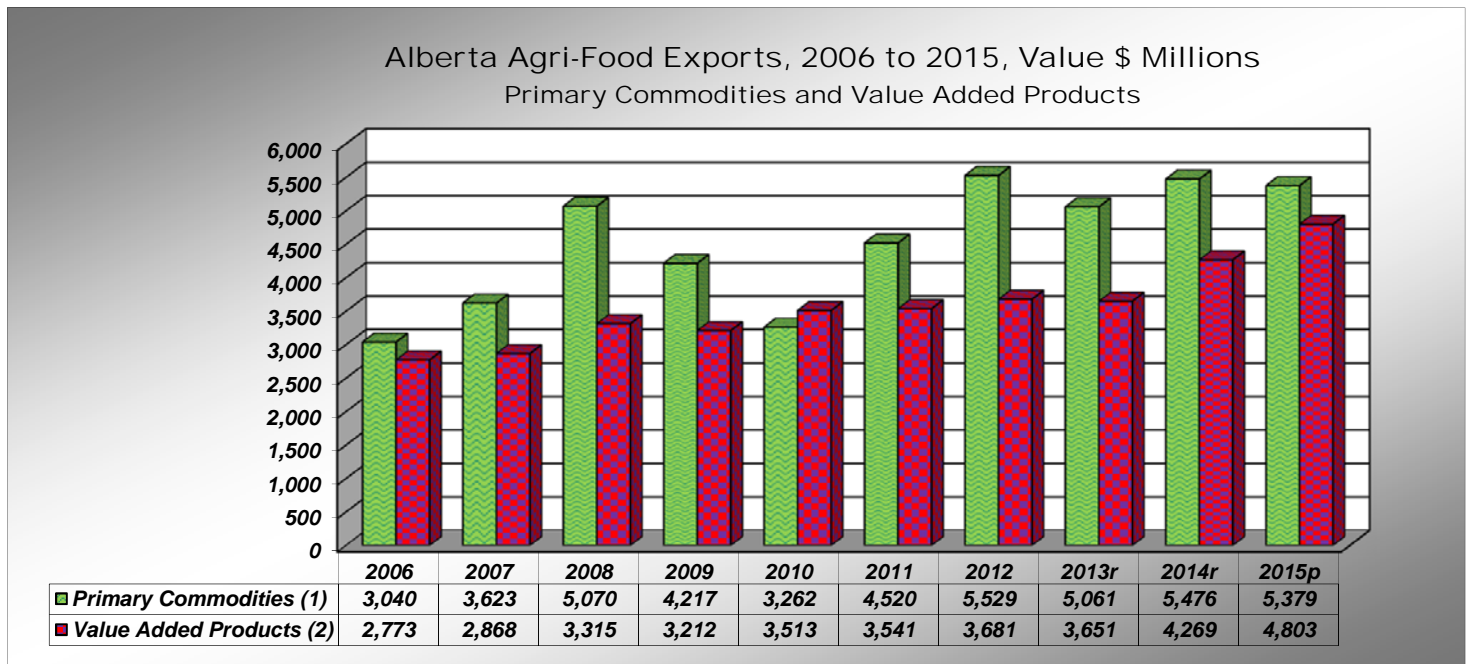
At the regional level, the largest exports were reported for North America and Asia. Exports to Asia rose 11.2 per cent to \$3.9 billion or 39.0 per cent of Alberta's total agri-food exports. The highest growth occurred in exports to Western Europe (22.6 per cent), Oceania (17.5 per cent), Africa (8.3 per cent) and Central America (7.9 per cent). On the other hand, exports to Eastern Europe, the Middle East and South America declined.

Source: Statistics Canada

Prepared by: Alberta Agriculture and Forestry, Economics and Competitiveness Branch, Statistics and Data Development Section

Table 1 - Alberta Agri-Food Exports, Top Products and Markets, 2006 - 2015, Value

	2006	2007	2008	2009	2010	2011	2012	2013r	2014r	2015p	2015/2014
	\$ Millions										% Change
Total Agri-Food Exports	5,813	6,491	8,386	7,429	6,775	8,061	9,210	8,712	9,745	10,181	4.5
- Primary Commodities (1)	3,040	3,623	5,070	4,217	3,262	4,520	5,529	5,061	5,476	5,379	-1.8
<i>% of Total</i>	52.3	55.8	60.5	56.8	48.2	56.1	60.0	58.1	56.2	52.8	
- Value Added Products (2)	2,773	2,868	3,315	3,212	3,513	3,541	3,681	3,651	4,269	4,803	12.5
<i>% of Total</i>	47.7	44.2	39.5	43.2	51.8	43.9	40.0	41.9	43.8	47.2	
	\$ Millions										% Change
Top Export Products (3)											2015/2014
1. Wheat	1,190	1,422	2,398	2,093	1,410	1,915	2,276	2,307	2,339	2,423	3.6
2. Beef (Fresh, Chilled, Frozen, Incl. Offal)	916	888	1,069	957	1,052	969	852	962	1,429	1,696	18.7
3. Canola Seed	716	944	1,493	1,220	996	1,652	1,873	1,616	1,767	1,677	-5.1
4. Live Cattle (Excl. Purebred)	690	702	542	465	525	464	588	478	715	585	-18.1
5. Pork (Fresh, Chilled, Frozen, Incl. Offal)	424	346	342	361	392	412	365	348	467	469	0.4
Top 5 Products	3,936	4,301	5,845	5,096	4,374	5,412	5,955	5,711	6,717	6,850	2.0
<i>% of Total</i>	67.7	66.3	69.7	68.6	64.6	67.1	64.7	65.6	68.9	67.3	
	\$ Millions										% Change
Top Export Markets (3)											2015/2014
1. United States	2,607	2,697	3,213	2,704	2,431	2,551	2,967	3,050	3,936	3,998	1.6
<i>% of Total</i>	94.0	94.0	96.9	84.2	69.2	31.6	32.2	35.0	40.4	39.3	
2. China	234	468	624	987	1,069	937	1,646	1,517	1,329	1,588	19.5
3. Japan	786	907	1,196	919	828	1,172	1,346	1,288	1,197	1,101	-8.1
4. Mexico	398	456	606	438	460	640	632	536	537	572	6.6
5. South Korea	123	118	149	117	146	297	174	114	228	233	2.1
Top 5 Markets	4,148	4,645	5,787	5,165	4,934	5,596	6,766	6,506	7,228	7,491	3.7
<i>% of Total</i>	71.3	71.6	69.0	69.5	72.8	69.4	73.5	74.7	74.2	73.6	



(1) Primary commodities refer to animal and crops.

(2) Value added products refer to products and by-products of manufacture (meats, cereal preparations, animal feed, oils and fats, beverages and other food products. It also includes crude animal and plant products (peat moss, nursery, hides and skins).

(3) Top products and markets are ranked by the 2015 year.

r - revised p - preliminary

Source: Statistics Canada

Prepared by: Alberta Agriculture and Forestry, Economics and Competitiveness Branch, Statistics and Data Development Section

Table 2 - Alberta Agri-Food Exports by Product, 2006 - 2015, Value

	2006	2007	2008	2009	2010	2011	2012	2013r	2014r	2015p	2015/2014
	\$ Millions										% Change
Total Agri-Food Exports	5,813.4	6,491.5	8,385.9	7,428.8	6,775.4	8,061.1	9,209.9	8,711.6	9,744.9	10,181.3	4.5
Animals and Crops	3,040.0	3,623.1	5,070.5	4,216.7	3,262.4	4,520.3	5,529.2	5,060.7	5,476.3	5,378.7	-1.8
Purebred Cattle	-	6.1	0.4	0.8	0.1	0.4	0.68	4.3	3.7	1.0	-73.5
Other Cattle (Excl. Purebred)	690.3	702.1	542.3	465.3	524.6	463.6	588.31	477.9	714.7	585.1	-18.1
Live Hogs	55.6	53.8	50.0	38.7	40.2	42.5	39.33	45.2	61.8	53.1	-14.1
Other Live Animals	37.8	35.7	35.0	30.0	28.4	20.3	23.62	26.4	41.5	52.9	27.5
Barley	83.6	157.2	323.9	146.9	73.4	120.2	188.39	183.0	194.2	194.8	0.3
Wheat	1,189.9	1,421.7	2,398.5	2,093.1	1,409.6	1,915.3	2,276.11	2,307.0	2,339.5	2,422.6	3.6
Oats	37.8	44.2	25.4	23.3	17.5	50.7	109.76	53.7	41.4	44.3	7.0
Other Cereals Unmilled	9.9	16.8	9.8	8.9	6.7	14.6	21.69	26.0	7.0	20.7	197.7
Hay and Fodder (Incl. Dehy Alfalfa Cubes)	106.2	129.8	88.3	79.9	51.7	64.3	114.19	104.1	100.5	96.1	-4.3
Peas, Dried	26.1	23.2	8.4	7.4	26.5	92.7	149.92	85.6	64.8	59.0	-9.0
Lentils	10.0	7.9	5.5	8.7	9.2	2.4	3.77	5.6	5.6	13.5	138.6
Other Dried Beans	30.0	28.9	27.3	22.3	15.2	21.7	54.92	40.8	45.5	53.7	18.1
Potatoes, Seed and Other	18.3	16.0	3.8	8.9	8.8	10.9	11.63	11.9	21.6	26.3	21.6
Vegetables and Fruits	12.7	14.9	13.5	16.0	18.6	7.6	11.04	13.2	14.8	6.4	-57.1
Canola Seed	716.0	943.7	1,493.3	1,219.8	996.2	1,651.9	1,873.0	1,615.9	1,766.7	1,676.9	-5.1
Mustard Seed	8.5	15.4	31.0	37.1	26.2	30.1	20.18	24.4	21.7	18.6	-14.2
Linseed	6.4	5.3	12.8	8.0	8.8	9.8	21.65	33.9	29.5	51.1	73.1
Other Oilseeds/Oilnuts/Kernels	0.9	0.5	1.1	1.5	0.7	1.2	21.01	1.7	1.7	2.6	46.9
Crude Animal and Plant Products	291.4	336.8	325.9	248.7	316.3	324.8	336.6	384.9	467.2	479.8	2.7
Raw Hides and Skins	160.8	191.1	178.2	102.6	181.1	188.4	176.1	204.5	253.3	221.1	-12.7
Fur Skins Undressed	0.1	0.1	0.0	0.0	0.0	0.0	0.0	0.0	0.0	0.0	-97.8
Bovine Semen	25.2	23.4	23.3	27.2	27.7	33.0	36.5	43.0	55.1	47.3	-14.1
Other Crude Animal Products	18.2	22.9	29.2	28.9	29.5	27.4	32.0	38.9	52.8	69.6	31.9
Seeds for Sowing	41.4	51.9	48.3	35.3	25.5	29.3	37.9	44.6	43.0	51.3	19.2
Nursery Stock	0.3	0.4	0.4	0.3	0.3	0.3	0.4	0.4	0.2	0.3	47.6
Peat Moss	39.5	44.9	43.1	51.2	48.0	41.5	48.8	48.6	54.7	80.6	47.3
Other Crude Vegetable Products	5.9	2.0	3.3	3.1	4.3	4.9	4.8	4.8	8.3	9.8	18.2
Products of Manufacture	2,482.0	2,531.5	2,989.6	2,963.4	3,196.7	3,215.9	3,344.2	3,266.1	3,801.4	4,322.8	13.7
Beef (Fresh, Chilled, Frozen, Incl. Offal)	916.4	888.0	1,068.7	956.9	1,051.8	969.4	852.2	961.7	1,428.9	1,696.5	18.7
Pork (Fresh, Chilled, Frozen, Incl. Offal)	423.7	345.8	342.1	361.1	391.6	411.5	365.0	348.3	467.0	468.9	0.4
Horse Meat (Fresh, Chilled, Frozen, Incl. Offal)	44.1	47.7	52.7	60.3	49.2	41.9	45.9	46.1	53.8	50.9	-5.5
Other Meat (Fresh, Chilled, Frozen, Incl. Offal)	13.5	11.4	15.6	14.8	14.5	12.2	11.9	12.8	11.8	16.4	39.1
Processed Meats	2.8	5.4	2.7	3.6	3.2	9.0	23.0	28.8	34.5	33.6	-2.8
Dairy Produce	2.8	8.4	4.0	0.4	3.1	1.7	4.9	0.5	3.5	0.3	-91.9
Eggs	1.7	4.6	0.1	-	-	-	-	-	0.0	1.1	n/a
Honey	4.9	7.0	18.5	16.9	15.5	9.4	11.0	12.8	14.9	20.5	37.3
Wheat or Meslin Flour	8.4	10.9	19.0	22.1	15.7	6.2	5.2	6.4	8.7	8.6	-1.1
Malt Roasted or not Roasted	96.5	136.7	244.0	223.5	142.7	151.5	180.0	174.6	225.6	237.6	5.3
Other Cereals, Milled	41.6	25.9	32.7	37.2	28.5	33.2	41.7	47.4	50.9	61.6	21.0
Cereal Preparations	39.8	37.8	40.2	42.5	38.9	35.8	32.2	33.0	37.2	48.9	31.4
Vegetable and Fruit Preparations	3.5	7.9	9.7	7.9	5.0	6.9	4.4	7.1	8.1	19.0	133.7
Fruit and Vegetable Juices	8.1	8.8	9.5	9.3	8.2	7.4	6.9	4.9	3.7	0.0	-99.9
Processed Potatoes	234.3	239.1	235.2	261.3	191.4	201.6	203.3	208.3	277.6	328.8	18.4
Sugar and Sugar Preparations	38.7	14.5	31.9	12.2	14.6	39.8	34.1	17.8	10.7	17.7	65.3
Food and Food Materials	35.8	35.9	37.6	38.1	35.6	44.1	44.7	29.9	36.4	38.0	4.3
Oilseed Cake and Meal	99.1	96.0	145.9	146.1	168.8	165.2	225.5	229.9	279.2	254.3	-8.9
Alfalfa Meal and Pellets	11.5	4.6	0.1	0.0	0.0	0.1	4.3	1.3	1.2	1.2	-1.8
Other Feeds of Vegetable Origin	4.0	4.6	3.0	7.5	6.3	4.4	6.9	14.1	15.4	14.5	-6.3
Animal Feed Preparations	26.5	41.3	48.3	68.2	115.5	120.2	142.7	212.6	242.8	316.9	30.5
Whiskey	36.2	34.5	39.2	39.3	42.8	54.7	73.7	71.5	66.1	66.9	1.2
Beer	1.2	1.1	1.5	1.3	3.0	1.2	-	0.0	0.0	0.0	-7.7
Other Beverages (Excl. Fruit Juices)	17.3	17.1	20.8	36.2	29.6	3.5	4.0	7.6	9.9	16.8	69.6
Tobacco	0.0	-	-	-	-	-	-	0.0	-	-	-
Tallow	8.9	16.4	32.9	17.9	29.5	119.4	124.6	104.3	100.5	88.5	-11.9
Canola/Mustard Oil - Crude	171.0	332.5	255.0	409.4	643.7	563.0	630.0	444.6	184.9	324.2	75.3
Canola/Mustard Oil - Refined	157.1	122.7	232.0	136.1	112.3	143.0	184.5	167.1	145.4	113.0	-22.3
Other Oils, Fats and Waxes	32.6	25.0	46.8	33.0	35.6	59.4	81.7	72.3	82.3	78.1	-5.1
Other Products	-	0.0	-	-	0.0	0.0	-	0.1	-	-	-

Source: Statistics Canada

r - revised p - preliminary

Prepared by: Alberta Agriculture and Forestry, Economics and Competitiveness Branch, Statistics and Data Development Section

Table 3 - Alberta Agri-Food Exports by Product, 2006 - 2015, Quantity

	2006	2007	2008	2009	2010	2011	2012	2013r	2014r	2015p	2015/2014
Live Animals	Number										% Change
Purebred Cattle	-	2,002	56	85	95	61	46	950	1,063	294	-72.3
Other Cattle (Excl. Purebred)	562,839	589,618	463,272	395,970	452,965	336,220	383,843	290,780	359,811	225,777	-37.3
Live Hogs	579,487	602,956	611,515	536,839	546,086	636,466	599,942	571,400	614,794	643,722	4.7
Meat	tonnes										% Change
Beef (Fresh, Chilled, Frozen, Incl. Offal)	262,101	267,421	316,523	296,377	307,251	249,170	195,631	205,184	235,525	240,469	2.1
Pork (Fresh, Chilled, Frozen, Incl. Offal)	159,132	130,679	116,623	123,851	129,331	123,050	111,556	109,930	122,225	131,035	7.2
Horse Meat (Fresh/Chilled/Frozen, Incl. Offal)	8,793	9,738	9,991	10,514	8,709	7,426	8,811	8,312	8,652	6,919	-20.0
Other Meat (Fresh/Chilled/Frozen, Incl. Offal)	8,426	6,891	6,461	5,914	6,990	6,131	7,126	8,507	5,829	6,890	18.2
Processed Meats	718	992	810	743	709	2,246	6,196	7,971	8,530	7,877	-7.6
Crops	tonnes										% Change
Wheat	5,973,511	5,352,937	5,521,386	6,853,538	5,520,112	5,543,766	6,715,670	6,845,987	7,331,799	7,561,405	3.1
Barley	470,711	633,519	1,009,681	523,893	303,706	409,112	601,395	572,566	625,825	564,627	-9.8
Oats	212,711	208,495	95,435	102,533	80,596	197,779	422,882	182,839	127,985	139,987	9.4
Other Cereals Unmilled	48,105	66,865	21,390	26,569	26,739	43,741	43,897	66,293	13,359	43,691	227.1
Hay and Fodder (Incl. Dehy Alfalfa Cubes)	396,885	453,492	285,200	235,978	145,294	202,445	354,701	310,781	279,736	247,266	-11.6
Potatoes, Seed and Other	53,312	46,172	11,525	22,795	25,473	28,039	26,239	29,927	40,405	36,118	-10.6
Vegetables and Fruits	8,062	10,017	6,947	8,862	8,720	5,576	6,485	7,328	10,966	3,559	-67.5
Peas, Dried	80,516	71,485	13,216	13,535	97,402	254,514	392,257	219,720	175,652	119,677	-31.9
Lentils	24,930	15,266	5,949	10,499	10,878	2,730	4,916	7,622	9,409	14,318	52.2
Other Dried Beans	48,187	40,807	30,369	22,989	18,721	25,147	46,377	37,467	41,998	53,092	26.4
Canola Seed	2,262,911	2,230,870	2,564,493	2,692,978	2,189,621	2,836,740	2,999,516	2,609,422	3,319,319	3,105,404	-6.4
Mustard Seed	18,499	25,347	28,982	32,039	31,214	38,711	24,039	26,878	24,984	21,683	-13.2
Linseed	19,789	13,671	17,667	15,173	18,752	14,907	33,702	48,057	43,231	73,082	69.0
Other Oilseeds/Oilnuts/Kernels	1,359	781	1,900	1,810	942	1,389	32,209	2,143	2,752	1,928	-30.0
Other Products	tonnes										% Change
Dairy Produce	1,141	2,145	1,312	127	1,162	490	2,020	235	808	70	-91.4
Honey	2,177	3,038	6,200	4,261	4,110	2,168	2,566	2,507	2,840	3,640	28.2
Wheat or Meslin Flour	19,280	22,867	27,414	37,872	29,342	9,532	8,176	9,761	11,225	10,109	-9.9
Malt Roasted or not Roasted	270,389	355,812	399,476	313,013	273,084	288,653	291,858	272,435	349,959	326,573	-6.7
Other Cereals, Milled	94,781	52,307	42,638	62,936	61,640	61,148	80,215	92,438	81,500	94,675	16.2
Cereal Preparations	17,913	15,842	16,397	16,443	13,684	10,859	9,111	8,734	10,195	13,225	29.7
Vegetable and Fruit Preparations	905	2,223	2,491	1,949	1,778	2,415	1,505	2,107	2,350	6,049	157.4
Processed Potatoes	227,840	227,347	214,628	211,420	173,424	185,069	179,105	176,736	226,179	224,867	-0.6
Oilseed Cake and Meal	604,098	624,790	695,165	639,668	836,522	735,274	724,411	662,717	775,080	808,222	4.3
Alfalfa Meal and Pellets	53,549	22,236	217	118	34	298	14,163	3,211	2,813	2,224	-20.9
Other Feeds of Vegetable Origin	23,326	26,014	25,954	29,169	29,893	25,799	38,752	58,227	58,364	47,928	-17.9
Prepared Animal Feeds	38,563	43,298	47,360	53,703	111,804	98,895	110,428	130,932	127,740	119,366	-6.6
Tallow	18,697	25,228	38,895	26,664	40,637	109,987	126,103	117,415	111,278	117,130	5.3
Canola/Mustard Oil - Crude	241,317	391,471	192,038	452,929	653,533	454,701	510,524	367,146	186,330	366,653	96.8
Canola/Mustard Oil - Refined	179,127	105,992	162,008	111,245	105,181	108,041	134,178	121,544	124,022	93,331	-24.7
Other Oils, Fats and Waxes	19,154	16,494	28,601	15,582	15,825	27,675	50,545	52,279	86,444	83,384	-3.5
Seeds for Sowing	29,465	30,583	24,308	15,465	13,541	15,973	17,390	17,937	14,714	15,144	2.9
Peat Moss	150,847	182,132	206,995	170,616	181,744	167,954	185,711	147,062	158,397	204,352	29.0
	Litres										% Change
Fruit and Vegetable Juices	11,886,142	20,662,479	28,432,616	19,068,005	11,795,011	9,857,530	8,976,594	5,826,103	4,434,662	953	-100.0
Whiskey (LPA)*	13,613,718	21,277,590	28,558,583	30,235,158	33,148,502	32,220,879	36,904,424	36,553,594	33,418,356	32,330,400	-3.3
Beer	2,343,673	2,187,950	2,993,385	2,290,336	5,408,106	2,317,437	-	11,179	35,191	9,948	-71.7

*(Litres of Proof Alcohol)

r - revised p - preliminary

Source: Statistics Canada

Prepared by: Alberta Agriculture and Forestry, Economics and Competitiveness Branch, Statistics and Data Development Section

Table 4 - Alberta Agri-Food Exports by Country, 2006 - 2015, Value

	2006	2007	2008	2009	2010	2011	2012	2013r	2014r	2015p	2015/2014
	\$ Millions										% Change
All Countries (Total)	5,813.4	6,491.5	8,385.9	7,428.8	6,775.4	8,061.1	9,209.9	8,711.6	9,744.9	10,181.3	4.5
1 United States	2,606.7	2,697.2	3,213.0	2,703.7	2,431.2	2,550.7	2,967.1	3,050.0	3,936.3	3,997.8	1.6
<i>% of Total</i>	44.8	41.5	38.3	36.4	35.9	31.6	32.2	35.0	40.4	39.3	
2 China	233.9	467.6	623.6	986.7	1,068.7	936.9	1,646.4	1,517.3	1,328.9	1,587.7	19.5
<i>% of Total</i>	4.0	7.2	7.4	13.3	15.8	11.6	17.9	17.4	13.6	15.6	
3 Japan	786.1	906.6	1,195.6	919.3	827.6	1,171.5	1,346.0	1,288.4	1,197.4	1,101.0	-8.1
<i>% of Total</i>	13.5	14.0	14.3	12.4	12.2	14.5	14.6	14.8	12.3	10.8	
4 Mexico	398.2	455.6	606.2	438.1	460.1	640.2	632.5	536.3	537.3	572.5	6.6
5 Korea, South	122.8	118.3	148.6	117.5	146.2	296.5	174.0	114.1	227.7	232.5	2.1
6 Indonesia	109.5	142.8	195.8	113.3	95.1	139.7	168.9	220.1	190.2	213.6	12.3
7 Bangladesh	25.3	86.7	60.9	116.6	131.3	153.7	107.5	103.7	110.1	156.9	42.6
8 Peru	41.1	37.8	49.8	77.5	65.0	66.5	69.6	90.9	131.3	150.0	14.2
9 United Arab Emirates	60.2	71.1	116.0	90.0	123.3	200.6	172.6	88.3	103.9	132.7	27.6
10 Philippines	18.1	58.5	56.5	77.5	50.9	43.7	34.4	51.5	30.3	128.5	323.6
11 Venezuela	48.7	46.2	115.3	100.4	70.2	87.1	109.9	128.6	105.0	126.1	20.1
12 Pakistan	82.0	86.1	125.1	61.9	99.0	169.9	45.3	0.1	63.0	124.1	97.0
13 Hong Kong	63.5	70.4	64.9	55.7	95.7	104.1	82.7	152.8	191.7	108.0	-43.7
14 Colombia	36.6	50.8	48.9	61.9	57.5	100.5	109.4	97.9	130.5	106.3	-18.6
15 Italy	47.0	58.6	70.2	84.3	64.8	72.3	58.0	53.6	94.2	95.6	1.5
16 Sri Lanka	85.5	69.8	124.3	96.9	83.9	94.9	120.4	49.1	67.2	76.9	14.4
17 Nigeria	19.8	2.3	5.3	27.8	17.4	18.1	43.4	59.6	75.4	75.0	-0.5
18 Ecuador	24.4	32.0	38.8	45.6	38.0	64.6	63.0	51.7	39.5	59.7	51.4
19 France	22.4	23.7	29.2	33.8	24.5	31.2	35.1	23.4	31.2	58.1	86.2
20 Chile	11.7	13.6	40.2	44.0	15.8	24.5	32.1	20.0	75.3	57.3	-23.9
21 Algeria	19.7	27.4	109.1	29.3	27.6	10.8	53.5	34.7	43.5	50.7	16.4
22 United Kingdom	37.4	54.1	69.2	48.2	33.2	47.2	57.0	52.8	38.6	49.6	28.6
23 Saudi Arabia	19.2	56.6	112.4	167.6	72.4	97.0	85.8	24.7	88.1	46.0	-47.8
24 Ghana	14.6	16.5	33.8	34.0	29.4	43.5	44.6	52.4	24.7	44.3	79.8
25 Taiwan	70.0	84.1	70.6	64.6	65.0	50.3	35.7	33.3	42.2	40.4	-4.3
26 Vietnam	36.0	50.5	37.2	7.5	13.5	11.7	23.5	32.7	11.5	38.8	235.8
27 Thailand	18.5	39.8	23.4	21.8	14.4	49.3	28.8	19.9	15.1	37.7	149.5
28 Malaysia	40.0	38.7	69.6	22.0	14.8	40.6	66.4	16.6	12.1	36.8	203.9
29 Germany	72.1	28.2	13.2	16.7	10.6	72.8	11.9	15.7	18.4	33.5	82.3
30 Morocco	20.5	27.1	38.3	49.6	20.6	19.0	39.2	44.5	40.2	31.6	-21.3
31 Cuba	8.6	11.9	31.5	22.4	21.7	27.3	35.7	33.2	24.3	31.4	29.3
32 South Africa	27.6	48.7	57.6	23.8	29.9	49.3	25.8	12.9	17.3	31.3	81.3
33 India	85.3	37.5	1.8	3.2	8.4	57.8	58.3	38.5	17.7	30.9	74.5
34 Spain	17.7	14.3	19.7	27.3	8.9	8.2	11.8	21.5	17.1	29.4	72.2
35 Belgium	20.3	25.4	35.2	26.1	24.6	50.3	22.9	23.8	37.8	29.3	-22.4
36 Sudan	17.8	61.4	72.7	32.4	31.6	47.6	44.8	54.5	76.4	27.2	-64.4
37 Singapore	6.9	12.5	9.8	13.0	15.4	13.4	21.0	38.5	36.9	26.7	-27.5
38 Australia	27.0	19.3	26.8	29.0	35.0	40.7	32.2	27.1	21.2	26.1	23.3
39 Turkey	11.9	1.7	30.0	4.9	2.6	8.9	8.3	10.5	10.5	25.4	142.8
40 Iraq	44.5	75.2	46.8	168.3	52.1	20.8	131.1	59.5	68.0	23.5	-65.4
41 Netherlands	74.4	25.4	13.7	17.0	9.8	29.6	35.1	15.4	25.5	23.5	-7.9
42 Cameroon	1	3.8	5.2	8.2	6.1	6.2	10.8	11.6	15.6	18.8	20.1
43 Switzerland	13.7	13.6	22.1	21.2	17.1	25.1	14.5	16.8	17.9	18.3	2.7
44 Guatemala	5.0	6.4	8.4	9.2	5.4	4.5	7.4	15.1	10.0	16.3	63.2
45 Portugal	1.8	1.0	0.5	18.5	15.5	34.5	14.6	2.9	8.1	16.1	N/A
46 Dominican Republic	7.0	5.9	8.4	14.3	9.5	5.3	7.9	1.5	7.4	15.5	109.2
47 Costa Rica	5.8	5.1	7.3	5.8	7.1	12.8	16.2	11.7	23.1	14.3	-38.1
48 Russian Federation	24	16.7	24.9	20.4	48.3	66.4	49.7	24.4	72.2	13.8	-80.9
49 New Zealand	4.3	4.4	8.7	9.5	8.9	13.7	9.1	11.0	12.0	13.0	8.0
50 Mozambique	12.4	2.4	1.6	0.0	1.2	0.0	6.2	13.6	23.9	11.5	-52.0
51 All Other	204.9	180.2	448.5	240.7	148.7	129.1	182.2	242.9	201.0	169.1	-15.9

r - revised p - preliminary

Source: Statistics Canada

Prepared by: Alberta Agriculture and Forestry, Economics and Competitiveness Branch, Statistics and Data Development Section

Table 5 - Alberta Agri-Food Exports to the United States, 2006 - 2015, Value

	2006	2007	2008	2009	2010	2011	2012	2013r	2014r	2015p	2015/2014
	\$ Millions										% Change
Agri-Food Exports to U.S	2,606.7	2,697.2	3,213.0	2,703.7	2,431.2	2,550.7	2,967.1	3,050.0	3,936.3	3,997.8	1.6
Animals and Crops	1,042.2	1,171.5	1,390.9	1,031.9	903.3	1,006.1	1,311.6	1,225.5	1,547.6	1,260.0	-18.6
Purebred Cattle	-	-	0.1	0.2	0.1	0.1	0.1	0.0	1.0	0.3	-71.9
Other Cattle (Excl. Purebred)	690.3	702.1	542.3	465.3	524.6	459.5	588.3	476.8	714.4	584.0	-18.2
Live Hogs	54.8	53.8	49.9	38.4	40.2	42.0	38.9	45.2	61.8	53.1	-14.1
Other Live Animals (Bison, Horses, Poultry)	22.3	21.1	22.7	22.4	18.7	14.9	16.4	16.2	27.8	36.5	31.4
Barley	10.3	35.2	103.4	54.1	13.7	21.2	63.5	59.2	66.6	67.5	1.3
Wheat	79.3	143.6	364.0	252.5	150.2	194.6	280.9	342.6	326.4	259.5	-20.5
Oats	35.9	39.9	24.5	22.5	16.9	47.7	101.9	51.3	40.1	41.1	2.4
Other Cereals Unmilled	5.7	7.2	6.4	5.0	4.6	10.4	19.8	10.7	6.4	5.4	-16.3
Hay and Fodder (Incl. Dehy Alfalfa Cubes)	6.7	13.1	16.1	13.7	7.3	20.2	31.6	34.5	27.8	23.0	-17.2
Peas, Dried	0.5	0.4	1.7	0.2	0.2	0.9	2.1	7.5	25.6	5.6	-78.0
Lentils	0.2	0.0	0.0	0.6	-	-	0.4	1.1	0.4	1.5	285.5
Other Dried Beans	12.7	11.5	15.3	17.7	10.8	15.0	31.8	24.9	26.4	28.6	8.4
Potatoes, Seed and Other	13.7	13.6	3.2	7.4	7.4	9.5	10.3	11.0	20.9	26.3	26.2
Vegetables and Fruits	12.6	14.1	13.2	15.1	16.0	6.7	10.0	12.3	10.8	6.3	-41.3
Canola Seed	91.2	107.1	203.5	92.7	72.4	137.1	93.0	109.3	169.3	96.4	-43.1
Mustard Seed	4.3	7.1	20.6	20.5	17.5	20.0	11.5	11.4	13.5	12.4	-8.4
Linseed	1.5	1.5	3.0	2.3	2.3	5.2	9.7	10.5	8.1	12.1	50.3
Other Oilseeds/Oilnuts/Kernels	0.2	0.3	0.9	1.5	0.5	1.0	1.5	0.9	0.5	0.4	-21.7
Crude Animal and Plant Products	110.3	119.2	110.7	108.5	106.9	93.9	112.3	131.8	158.6	180.2	13.6
Raw Hides and Skins	6.4	9.6	8.3	3.7	15.1	6.8	7.0	8.7	9.3	5.0	-46.0
Fur Skins Undressed	0.1	0.1	0.0	0.0	0.0	0.0	0.0	0.0	0.0	0.0	-97.2
Bovine Semen	18.9	15.7	11.8	13.7	12.8	13.4	12.8	16.7	24.1	19.0	-21.1
Other Crude Animal Products	4.3	3.8	7.1	7.0	5.5	7.1	12.1	16.6	28.3	24.9	-12.1
Seeds for Sowing	37.6	45.1	39.7	31.3	23.7	22.7	29.7	38.0	36.6	45.8	25.3
Nursery Stock	0.3	0.4	0.3	0.3	0.3	0.2	0.4	0.4	0.2	0.3	37.5
Peat Moss	38.7	43.9	41.7	50.3	47.0	40.4	47.2	47.8	54.0	79.8	47.8
Other Crude Vegetable Products	4.2	0.7	1.8	2.2	2.5	3.3	3.1	3.7	6.2	5.5	-11.4
Products of Manufacture	1,454.2	1,406.4	1,711.4	1,563.3	1,421.0	1,450.8	1,543.1	1,692.6	2,230.1	2,557.5	14.7
Beef (Fresh, Chilled, Frozen, Incl. Offal)	720.0	670.8	820.7	709.7	723.8	655.3	581.0	618.9	946.0	1,150.1	21.6
Pork (Fresh, Chilled, Frozen, Incl. Offal)	129.9	107.5	55.6	57.3	65.7	57.4	57.9	85.0	126.5	138.9	9.9
Other Meat (Fresh, Chilled, Frozen, Incl. Offal)	3.6	1.6	3.6	4.2	5.9	3.7	1.7	3.0	3.4	6.9	103.1
Processed Meats	1.5	3.9	1.2	3.0	2.7	2.9	4.2	6.0	7.3	10.3	40.7
Dairy Produce	-	0.0	0.1	0.2	0.1	0.1	0.2	-	-	0.1	-
Eggs	1.7	4.6	0.1	-	-	-	-	-	0.0	1.1	n/a
Honey	3.1	5.3	7.6	9.1	7.3	3.1	6.0	6.6	4.9	9.6	98.0
Wheat or Meslin Flour	5.0	3.9	7.3	4.6	3.3	4.0	4.5	5.1	5.7	7.2	27.6
Malt Roasted or not Roasted	22.5	37.0	73.8	74.1	54.7	45.0	48.7	71.2	116.5	108.2	-7.1
Other Cereals, Milled	33.7	24.0	28.5	23.3	20.4	27.3	30.1	35.5	42.5	48.3	13.6
Cereal Preparations	37.3	35.6	38.6	39.8	36.4	34.3	31.5	32.3	36.3	47.4	30.5
Vegetable and Fruit Preparations	3.4	7.8	9.5	7.9	4.9	6.8	4.3	7.1	8.0	19.0	136.0
Fruit and Vegetable Juices	4.5	4.7	4.6	4.7	3.8	3.0	2.5	0.3	0.1	-	-100.0
Processed Potatoes	153.4	153.2	147.1	174.3	131.0	137.6	159.3	183.6	203.3	239.4	17.7
Sugar and Sugar Preparations	38.4	8.6	24.2	10.9	8.5	28.0	21.3	9.4	10.7	14.7	37.7
Food and Food Materials	26.2	26.6	28.9	30.9	29.6	37.6	36.2	25.5	30.9	33.5	8.4
Oilseed Cake and Meal	96.3	94.3	144.0	142.9	61.0	87.7	163.5	217.5	274.1	249.6	-8.9
Alfalfa Meal and Pellets	1.6	0.9	0.1	0.0	0.0	0.1	0.9	1.3	1.2	1.2	-1.8
Other Feeds of Vegetable Origin	0.9	2.1	1.9	4.5	3.8	2.8	5.5	7.2	6.4	6.1	-4.5
Animal Feed Preparations	10.2	15.0	17.8	25.6	37.8	48.7	62.0	90.3	113.2	176.5	56.0
Whiskey	35.8	34.0	38.1	38.5	39.8	34.6	40.7	43.7	45.1	49.8	10.5
Beer	1.2	1.1	1.5	1.3	3.0	1.2	-	0.0	0.0	0.0	-7.7
Other Beverages (Excl. Fruit Juices)	10.2	8.0	5.7	20.6	14.2	3.1	3.7	7.0	8.4	9.5	13.0
Tallow	8.8	16.4	32.9	17.9	29.5	43.6	49.6	38.8	44.1	41.0	-7.1
Canola/Mustard Oil - Crude	6.6	9.1	33.2	11.8	4.2	5.5	3.0	1.3	21.2	44.4	109.5
Canola/Mustard Oil - Refined	83.1	114.6	160.1	123.8	102.5	129.8	171.1	154.0	130.6	101.1	-22.6
Other Oils, Fats and Waxes	15.4	16.0	24.7	22.2	27.0	47.6	53.5	42.2	43.6	43.5	-0.2
Other Products	-	0.0	-	-	0.0	0.0	-	0.0	-	-	-

r - revised p - preliminary

Source: Statistics Canada

Prepared by: Alberta Agriculture and Forestry, Economics and Competitiveness Branch, Statistics and Data Development Section

Table 6 - Alberta Agri-Food Exports to China, 2006 - 2015, Value

	2006	2007	2008	2009	2010	2011	2012	2013r	2014r	2015p	2015/2014
	\$ Thousands										% Change
Agri-Food Exports to China	233,914	467,648	623,559	986,665	1,068,655	936,883	1,646,416	1,517,298	1,328,928	1,587,700	19.5
Animals and Crops	111,017	179,910	326,839	560,138	251,580	354,139	872,174	873,499	924,319	963,656	4.3
Live hogs	-	-	-	-	-	-	300	-	-	-	-
Other Live Animals (Horses)	-	-	-	-	-	-	-	-	-	0	-
Barley	29,432	32,964	25,293	46,747	22,502	21,268	40,029	51,946	76,800	114,101	48.6
Wheat	10,633	187	-	13,290	22,364	23,356	74,309	109,320	35,839	120,206	235.4
Oats	-	1	-	-	-	2	6	8	12	290	2251.1
Other Cereals Unmilled	-	2	-	34	12	-	-	-	-	-	-
Hay and Fodder (Incl. Dehy Alfalfa Cubes)	-	10	-	-	-	-	299	1,606	4,515	6,973	54.4
Peas, Dried	1,097	2,721	43	146	2,792	30,446	75,567	34,391	11,825	6,459	-45.4
Lentils	-	-	-	-	-	-	14	41	405	207	-49.0
Other Dried Beans	-	-	-	-	-	-	45	-	-	-	-
Vegetables and Fruits	-	-	-	354	1,527	-	160	-	921	-	-
Canola Seed	69,536	143,609	300,955	497,086	200,729	277,135	673,134	663,645	782,652	689,815	-11.9
Mustard Seed	11	8	-	28	26	34	29	48	33	43	31.6
Linseed	309	408	548	2,453	1,627	1,898	8,283	12,494	11,316	25,562	125.9
Other Oilseeds/Oilnuts/Kernels	-	-	-	-	-	-	-	-	-	-	-
Crude Animal and Plant Products	64,947	60,946	61,302	53,239	89,184	128,019	137,777	175,180	210,090	145,220	-30.9
Raw Hides and Skins	62,346	57,732	59,025	47,101	81,214	122,482	132,231	170,577	201,606	137,770	-31.7
Fur Skins Undressed	-	-	-	-	-	-	-	-	7	-	-100.0
Bovine Semen	503	1,150	499	1,179	670	878	2,914	2,687	5,905	4,207	-28.8
Other Crude Animal Products	1,896	1,824	1,371	4,644	6,880	4,034	1,860	1,221	1,574	2,874	82.5
Seeds for Sowing	49	223	384	260	421	581	728	653	487	244	-50.0
Nursery Stock	9	-	-	-	-	-	15	-	-	-	-
Peat Moss	-	-	4	8	-	18	27	-	-	15	-
Other Crude Vegetable Products	143	17	19	47	-	25	3	42	511	110	-78.4
Products of Manufacture	57,950	226,792	235,418	373,288	727,891	454,725	636,465	468,618	194,519	478,824	146.2
Beef (Fresh, Chilled, Frozen, Incl. Offal)	-	106	-	-	3	-	4,686	25,929	39,023	234,879	501.9
Pork (Fresh, Chilled, Frozen, Incl. Offal)	3,170	3,255	4,362	564	95	2,759	3,726	740	967	22,456	2222.4
Other Meat (Fresh, Chilled, Frozen, Incl. Offal)	-	63	-	-	27	154	-	-	-	-	-
Processed Meats	36	-	-	-	-	-	-	-	-	26	-
Dairy Produce	-	-	-	-	-	3	-	-	-	-	-
Honey	-	-	36	221	121	385	257	400	224	385	71.6
Wheat or Meslin Flour	140	201	126	24	-	19	-	18	60	-	-100.0
Malt Roasted or not Roasted	2,147	-	-	-	-	-	-	13	-	-	-
Other Cereals, Milled	9	16	2	-	1	13	10	172	189	-	-100.0
Cereal Preparations	10	-	1	3	3	-	-	-	-	-	-
Fruit and Vegetable Juices	-	3	-	-	-	-	-	-	-	-	-
Processed Potatoes	12,698	13,299	6,147	3,391	1,994	6,102	4,211	6,793	27,195	19,633	-27.8
Sugar and Sugar Preparations	-	-	-	-	-	-	-	-	7	-	-
Food and Food Materials	1,166	277	159	71	94	76	33	137	338	409	20.7
Oilseed Cake and Meal	7	102	11	1,011	102,981	74,587	56,415	-	-	4	-
Animal Feed Preparations	5	3,031	128	269	-	1,269	-	196	188	98	-47.9
Whiskey	-	-	-	-	-	19	32	-	-	83	-
Other Beverages (Excl. Fruit Juices)	-	-	23	20	117	91	146	137	2	20	829.9
Canola/Mustard Oil - Crude	38,552	206,327	171,712	365,852	622,451	369,241	565,043	432,438	124,511	197,714	58.8
Canola/Mustard Oil - Refined	-	-	50,718	-	-	-	1,880	1,646	1,800	3,024	68.0
Other Oils, Fats and Waxes	9	114	1,993	1,863	5	5	26	-	17	94	467.1

0 (zero) refers to value lower than \$500.

r - revised p - preliminary

Source: Statistics Canada

Prepared by: Alberta Agriculture and Forestry, Economics and Competitiveness Branch, Statistics and Data Development Section

Table 7 - Alberta Agri-Food Exports to Japan, 2006 - 2015, Value

	2006	2007	2008	2009	2010	2011	2012	2013r	2014r	2015p	2015/2014
	\$ Thousands										% Change
Agri-Food Exports to Japan	786,066	906,621	1,195,606	919,261	827,649	1,171,516	1,345,995	1,288,407	1,197,409	1,100,971	-8.1
Animals and Crops	467,553	594,172	836,627	520,075	444,168	743,419	888,568	878,333	720,221	607,921	-15.6
Purebred Cattle	-	-	-	-	-	-	-	-	-	-	-
Live Hogs	-	-	-	-	-	-	-	-	-	-	-
Other Live Animals (Horses)	14,948	13,841	11,574	7,218	9,277	5,078	7,081	9,671	13,515	15,917	17.8
Barley	18,935	15,447	45,883	18,573	12,584	37,161	49,156	40,830	34,081	12,990	-61.9
Wheat	81,959	94,465	189,182	103,779	85,176	157,227	219,647	203,503	187,833	159,764	-14.9
Oats	645	1,298	449	446	484	1,832	3,085	1,698	762	966	26.7
Other Cereals Unmilled	581	4,828	1,225	854	1,210	3,688	636	14,561	37	252	576.0
Hay and Fodder (Incl. Dehy Alfalfa Cubes)	85,422	103,594	64,449	58,972	42,296	38,149	67,417	58,276	57,927	55,851	-3.6
Peas, Dried	989	681	410	734	380	395	642	935	1,159	1,788	54.3
Lentils	-	7	-	-	1	73	116	-	-	-	-
Other Dried Beans	48	340	189	55	22	-	-	45	230	163	-28.9
Vegetables and Fruits	-	-	225	15	450	74	-	95	-	-	-
Canola Seed	262,441	357,021	519,524	323,246	287,145	495,422	537,188	544,378	420,946	356,808	-15.2
Mustard Seed	1,414	2,404	3,302	6,076	4,756	4,164	3,304	3,943	3,483	3,224	-7.4
Linseed	170	136	185	73	387	120	237	396	204	181	-11.3
Other Oilseeds/Oilnuts/Kernels	-	110	32	33	-	35	59	-	45	18	-61.4
Crude Animal and Plant Products	4,028	7,217	6,141	3,127	3,404	3,525	5,076	3,612	4,508	5,769	28.0
Raw Hides and Skins	3,156	6,465	4,550	1,539	1,961	1,951	2,805	1,761	2,393	2,207	-7.8
Fur Skins Undressed	-	-	15	-	-	-	0	-	-	-	-
Bovine Semen	539	303	839	1,078	1,062	884	1,400	1,412	1,256	2,484	97.7
Other Crude Animal Products	219	89	-	72	37	9	6	23	163	123	-24.8
Seeds for Sowing	21	186	325	141	175	124	459	271	559	782	39.9
Peat Moss	88	174	412	297	169	553	405	139	132	174	31.0
Other Crude Vegetable Products	5	-	-	-	-	4	-	5	4	-	-100.0
Products of Manufacture	314,485	305,232	352,838	396,059	380,078	424,571	452,352	406,462	472,679	487,281	3.1
Beef (Fresh, Chilled, Frozen, Incl. Offal)	12,379	19,525	30,739	47,443	64,515	56,946	60,772	56,871	73,270	65,076	-11.2
Pork (Fresh, Chilled, Frozen, Incl. Offal)	185,223	156,613	169,652	196,507	203,144	192,646	178,542	153,310	189,024	198,976	5.3
Horse Meat (Fresh, Chilled, Frozen, Incl. Offal)	15,817	16,803	16,926	18,571	14,735	13,992	17,058	17,919	20,350	24,556	20.7
Other Meat (Fresh, Chilled, Frozen, Incl. Offal)	-	-	-	-	0	96	38	30	419	70	-83.2
Processed Meats	612	812	382	0	-	5,401	18,097	22,375	26,477	22,988	-13.2
Dairy Produce	-	-	-	-	264	-	998	-	-	-	-
Honey	508	684	3,951	4,545	6,108	4,813	4,464	5,771	9,832	10,236	4.1
Wheat or Meslin Flour	252	21	-	-	-	-	-	-	-	-	-
Malt Roasted or not Roasted	36,901	52,338	72,722	80,201	52,422	55,601	67,201	70,383	68,358	80,613	17.9
Other Cereals, Milled	8	120	128	362	309	126	747	2,728	428	1,178	175.1
Cereal Preparations	835	532	402	130	132	-	-	43	149	646	334.0
Vegetable and Fruit Preparations	-	-	41	-	-	-	-	-	-	-	-
Processed Potatoes	33,585	34,041	30,208	28,227	23,960	26,888	17,753	5,331	21,783	32,439	48.9
Sugar and Sugar Preparations	37	23	56	10	19	15	27	4	-	2	-
Food and Food Materials	2,683	2,365	2,609	2,160	1,366	1,526	2,951	2,761	2,790	2,627	-5.8
Oilseed Cake and Meal	-	-	10	112	5	88	62	687	91	149	63.2
Alfalfa Meal and Pellets	7,393	2,650	-	-	-	-	3,437	-	-	-	-
Other Feeds of Vegetable Origin	2,596	1,522	872	2,574	1,930	726	522	2,123	2,728	1,942	-28.8
Animal Feed Preparations	663	415	639	600	1,139	1,407	1,743	2,336	3,766	6,279	66.7
Whiskey	23	12	10	20	20	1,510	13,950	10,078	5,950	2,610	-56.1
Other Beverages (Excl. Fruit Juices)	557	236	613	1,001	860	25	-	468	1,038	569	-45.2
Tallow	-	-	-	-	-	48,753	48,182	38,591	36,091	25,123	-30.4
Canola/Mustard Oil - Crude	3,468	8,423	4,726	1,709	372	1,445	4,148	3,070	-	898	-
Canola/Mustard Oil - Refined	3,612	3,331	11,957	5,976	2,700	5,875	5,124	4,844	4,032	3,300	-18.2
Other Oils, Fats and Waxes	7,333	4,768	6,196	5,910	6,078	6,689	6,536	6,738	6,101	7,005	14.8

0 (zero) refers to value lower than \$500.

r - revised p - preliminary

Source: Statistics Canada

Prepared by: Alberta Agriculture and Forestry, Economics and Competitiveness Branch, Statistics and Data Development Section

Table 8 - Alberta Agri-Food Exports to Mexico, 2006 - 2015, Value

	2006	2007	2008	2009	2010	2011	2012	2013r	2014r	2015p	2015/2014
	\$ Thousands										% Change
Agri-Food Exports to Mexico	398,179	455,580	606,214	438,059	460,144	640,239	632,455	536,302	537,275	572,487	6.6
Animals and Crops	233,055	273,577	402,199	267,422	266,858	415,896	482,458	409,211	353,908	347,716	-1.7
Purebred Cattle	-	-	-	-	-	-	-	-	878	341	-61.2
Other Cattle (Excl. Purebred)	-	-	-	-	3	-	-	-	336	1,069	217.8
Live Hogs	719	-	-	-	-	-	-	-	-	-	-
Sheep, Goats and Horses, Live	28	-	-	-	-	0	1	10	-	0	-
Barley	1,246	4,708	14,589	3,423	-	3,993	8,535	374	335	-	-100.0
Wheat	90,273	76,487	70,831	97,089	72,384	108,327	123,133	125,456	103,724	93,414	-9.9
Oats	123	1,366	190	99	111	340	2,173	286	18	814	4463.6
Other Cereals Unmilled	-	154	-	-	5	-	-	-	-	-	-
Peas, Dried	-	49	-	-	-	-	-	36	38	-	-100.0
Lentils	-	-	-	-	-	-	93	-	-	-	-
Other Dried Beans	167	419	-	273	74	-	1,526	1,994	-	-	-
Potatoes, Seed and Other	4,568	2,151	593	1,332	1,359	1,436	1,302	926	595	-	-100.0
Canola Seed	135,869	188,205	315,929	165,134	192,865	301,670	345,461	279,748	247,767	251,830	1.6
Linseed	62	39	68	72	58	129	235	380	217	249	14.4
Crude Animal and Plant Products	5,022	6,649	10,880	8,828	10,487	7,305	8,874	8,909	11,369	16,010	40.8
Raw Hides and Skins	317	-	21	1	6	7	2	2	0	0	2.6
Fur Skins Undressed	-	-	-	-	1	0	1	1	-	-	-
Bovine Semen	35	148	132	77	957	185	66	88	386	1,080	179.8
Other Crude Animal Products	4,670	6,497	10,727	8,751	9,519	7,112	8,805	8,819	10,980	14,927	36.0
Peat Moss	-	4	-	-	4	-	-	-	-	-	-
Other Crude Vegetable Products	-	-	-	-	-	-	-	-	3	3	-3.4
Products of Manufacture	160,103	175,354	193,135	161,809	182,798	217,038	141,123	118,181	171,998	208,761	21.4
Beef (Fresh, Chilled, Frozen, Incl. Offal)	130,777	140,916	144,483	137,472	152,643	133,800	103,598	84,221	136,318	142,594	4.6
Pork (Fresh, Chilled, Frozen, Incl. Offal)	12,630	11,615	12,165	3,851	7,518	3,465	4,210	10,385	9,157	9,863	7.7
Horse Meat (Fresh, Chilled, Frozen, Incl. Offal)	2,372	1,897	677	893	698	17	-	-	-	-	-
Other Meat (Fresh, Chilled, Frozen, Incl. Offal)	-	40	42	45	107	239	77	-	98	70	-29.1
Processed Meats	71	190	360	160	93	228	551	-	29	-	-100.0
Dairy Produce	-	3,815	-	-	-	1,400	625	-	-	-	-
Malt Roasted or not Roasted	1,394	-	15,436	3,957	-	-	-	-	7,356	21,001	185.5
Other Cereals, Milled	1,400	330	643	472	1,482	2,897	5,456	2,455	4,929	11,453	132.4
Cereal Preparations	713	-	-	-	-	-	-	-	-	-	-
Vegetable and Fruit Preparations	-	-	-	-	1	-	-	-	-	-	-
Fruit and Vegetable Juices	3,512	4,051	4,918	4,598	4,419	4,373	4,399	4,597	3,531	-	-100.0
Processed Potatoes	5,755	5,348	4,916	6,398	5,746	5,779	8,872	5,387	3,440	3,590	4.4
Sugar and Sugar Preparations	237	5,828	7,569	1,212	6,069	11,501	12,706	8,400	-	2,900	-
Food and Food Materials	561	512	0	19	-	1	-	-	432	-	-100.0
Oilseed Cake and Meal	-	-	-	841	2,702	1,379	66	-	-	-	-
Alfalfa Meal and Pellets	-	35	-	-	-	-	-	-	-	-	-
Animal Feed Preparations	174	-	-	-	3	-	-	-	-	-	-
Whiskey	-	-	-	-	-	200	53	105	129	312	142.4
Other Beverages (excl. Fruit Juices)	36	-	3	-	108	-	-	-	298	6,214	1987.6
Tallow	-	-	-	-	6	69	-	-	4,420	9,142	106.9
Canola/Mustard Oil - Crude	-	-	1,756	1,384	-	50,827	-	-	-	-	-
Canola/Mustard Oil - Refined	93	318	141	137	15	-	-	-	-	-	-
Other Oils, Fats and Waxes	377	459	26	371	1,187	864	511	2,632	1,861	1,622	-12.8

0 (zero) refers to value lower than \$500.

r - revised p - preliminary

Source: Statistics Canada

Prepared by: Alberta Agriculture and Forestry, Economics and Competitiveness Branch, Statistics and Data Development Section

Table 9 - Alberta Agri-Food Exports to South Korea, 2006 - 2015, Value

	2006	2007	2008	2009	2010	2011	2012	2013r	2014r	2015p	2015/2014
	\$ Thousands										% Change
Agri-Food Exports to S. Korea	122,847	118,320	148,563	117,486	146,188	296,539	174,005	114,134	227,718	232,542	2.1
Animals and Crops	45,796	20,092	31,025	25,596	73,106	189,561	74,514	40,960	83,390	30,786	-63.1
Purebred Cattle	-	593	300	577	-	294	540	652	1,081	360	-66.7
Live Hogs	24	-	-	-	-	126	-	-	-	-	-
Other Live Animals (Live Horses)	-	-	-	-	-	-	-	-	24	-	-100.0
Barley	-	-	1,360	1	-	-	-	-	29	107	276.2
Wheat	33,896	8,643	24,527	20,338	71,070	183,492	55,974	33,081	74,987	23,577	-68.6
Oats	8	31	5	9	1	68	139	108	436	507	16.2
Other Cereals Unmilled	380	1,004	153	1,448	272	460	1,237	560	304	207	-31.9
Hay and Fodder (Incl. Dehy Alfalfa Cubes)	11,069	9,413	4,063	2,020	297	3,500	8,469	6,000	6,248	5,647	-9.6
Peas, Dried	-	-	-	-	59	-	-	-	-	-	-
Lentils	-	-	-	-	-	58	54	-	-	-	-
Other Dried Beans	116	113	-	71	375	177	220	185	50	139	177.9
Canola Seed	215	-	-	-	20	-	7,091	-	-	-	-
Mustard Seed	86	291	607	1,122	998	1,360	753	324	150	25	-83.2
Linseed	3	5	10	10	13	26	37	51	81	216	166.2
Crude Animal and Plant Products	15,396	29,269	37,107	16,829	11,154	18,364	10,106	9,992	28,067	65,365	132.9
Raw Hides and Skins	14,892	29,000	36,567	16,523	10,714	16,693	8,779	9,394	27,264	64,490	136.5
Bovine Semen	282	159	189	164	143	540	566	330	430	724	68.4
Other Crude Animal Products	-	73	191	-	-	143	-	-	44	-	-
Seeds for Sowing	90	-	-	50	217	875	12	-	-	-	-
Peat Moss	131	36	141	93	79	72	284	29	22	85	294.1
Other Crude Vegetable Products	-	-	18	-	-	41	465	239	307	65	-78.7
Products of Manufacture	61,655	68,959	80,432	75,062	61,928	88,615	89,385	63,182	116,261	136,392	17.3
Beef (Fresh, Chilled, Frozen, Incl. Offal)	-	-	-	-	-	45	7,361	6,905	22,953	3,710	-83.8
Pork (Fresh, Chilled, Frozen, Incl. Offal)	32,838	28,018	31,058	27,725	28,658	43,205	35,173	26,637	35,862	43,197	20.5
Horse Meat (Fresh, Chilled, Frozen, Incl. Offal)	-	-	-	-	-	-	-	-	-	-	-
Other Meat (Fresh, Chilled, Frozen, Incl. Offal)	31	-	-	-	-	-	-	-	6	-	-
Processed Meats	-	-	-	-	-	-	-	90	-	-	-
Dairy Products	-	-	-	-	-	-	-	4	-	26	-
Honey	7	149	126	12	7	10	200	-	-	208	-
Wheat or Meslin Flour	423	4,241	9,138	15,423	11,404	1,906	318	307	277	289	4.1
Malt Roasted or not Roasted	5,063	8,627	7,016	9,843	1,377	7,857	13,258	8,302	14,418	11,087	-23.1
Other Cereals, Milled	10	9	105	52	-	15	133	292	825	309	-62.6
Cereal Preparations	461	1,057	221	1,658	1,705	746	431	524	583	833	42.8
Vegetable and Fruit Preparations	-	-	-	30	67	65	-	-	-	-	-
Processed Potatoes	5,345	2,117	9,097	7,080	1,693	1,141	228	139	1,748	9,761	458.5
Sugar and Sugar Preparations	-	0	-	-	-	-	-	-	-	-	-
Other Food/Food Materials	627	716	378	443	253	258	1,008	508	296	565	91.2
Oilseed Cake and Meal	51	103	230	-	390	592	307	252	272	-	-100.0
Alfalfa Meal and Pellets	-	6	-	-	-	-	-	-	-	-	-
Other Feeds of Vegetable Origin	434	665	203	438	469	841	797	3,174	6,133	5,527	-9.9
Animal Feed Preparations	106	-	37	-	89	483	1,051	1,343	2,026	3,118	53.8
Wines and Fermented Beverages	-	72	127	93	32	5	5	26	8	5	-44.7
Tallow	-	-	-	-	-	13,828	4,821	-	-	-	-
Canola/Mustard Oil - Crude	9,854	20,073	16,914	9,393	12,293	14,217	9,830	6,346	10,850	50,282	363.4
Canola/Mustard Oil - Refined	84	2,308	4,838	2,513	3,488	3,153	2,432	2,051	4,366	2,231	-48.9
Other Oils, Fats and Waxes	6,321	796	943	359	4	248	12,034	6,282	15,637	5,245	-66.5

0 (zero) refers to value lower than \$500.

r - revised p - preliminary

Source: Statistics Canada

Prepared by: Alberta Agriculture and Forestry, Economics and Competitiveness Branch, Statistics and Data Development Section

Table 10 - Alberta Agri-Food Exports to European Union Countries (EU 28), 2006 - 2015, Value

	2006	2007	2008	2009	2010	2011	2012	2013r	2014r	2015p	2015/2014 % Change
	\$ Thousands										
All Countries (Total)	5,813,428	6,491,477	8,385,912	7,428,837	6,775,409	8,061,065	9,209,942	8,711,642	9,744,893	10,181,266	4.5
Exports to EU (28)	321,224	253,637	280,014	294,797	217,437	370,414	279,708	243,750	307,124	381,707	24.3
% of Total	5.5	3.9	3.3	4.0	3.2	4.6	3.0	2.8	3.2	3.7	
1 Italy	46,963	58,608	70,212	84,327	64,771	72,279	58,009	53,574	94,197	95,577	1.5
2 France	22,400	23,740	29,241	33,800	24,474	31,234	35,057	23,403	31,194	58,095	86.2
3 United Kingdom	37,352	54,148	69,165	48,181	33,238	47,166	57,019	52,831	38,556	49,578	28.6
4 Germany	72,070	28,211	13,168	16,731	10,592	72,815	11,858	15,668	18,382	33,507	82.3
5 Spain	17,698	14,288	19,666	27,328	8,884	8,169	11,826	21,470	17,084	29,421	72.2
6 Belgium	20,324	25,434	35,159	26,105	24,623	50,251	22,943	23,827	37,803	29,321	-22.4
7 Netherlands	74,424	25,372	13,702	17,001	9,768	29,580	35,060	15,446	25,506	23,499	-7.9
8 Portugal	1,787	966	546	18,455	15,539	34,463	14,636	2,871	8,127	16,083	97.9
9 Sweden	409	678	1,577	1,905	2,640	2,358	2,511	5,144	6,976	10,027	43.7
10 Poland	1,100	882	416	551	143	2,149	4,046	6,173	5,663	8,201	44.8
11 Czech Republic	3,852	4,914	8,517	6,443	7,154	4,293	5,049	4,455	4,146	7,312	76.4
12 Greece	4,096	5,888	5,097	2,022	2,431	4,903	7,629	6,097	7,241	7,178	-0.9
13 Finland	294	534	1,720	599	938	1,368	2,880	3,472	4,277	5,416	26.6
14 Denmark	2,618	2,402	4,902	5,192	6,030	4,867	2,090	2,461	1,683	2,023	20.2
15 Hungary	993	1,107	1,429	2,627	2,682	2,325	2,381	2,090	1,711	1,866	9.1
16 Romania	10,263	121	32	83	-	-	-	718	971	1,122	15.6
17 Lithuania	147	222	582	1,178	696	606	1,087	766	865	937	8.4
18 Latvia	922	523	1,022	321	841	409	596	374	279	574	105.6
19 Croatia	45	36	27	195	483	197	166	207	371	511	37.5
20 Ireland, Republic of (EIRE)	2,320	4,759	2,993	1,152	968	384	4,302	1,087	611	478	-21.8
21 Cyprus	90	35	1	109	46	185	292	807	1,028	423	-58.9
22 Bulgaria	155	34	209	100	104	96	95	209	233	317	35.8
23 Malta	194	58	-	26	11	-	-	388	92	176	91.2
24 Luxembourg	154	168	67	70	13	30	16	20	103	47	-54.7
25 Austria	52	251	179	244	183	10	3	100	0	17	4,121.8
26 Estonia	222	1	68	10	145	16	-	16	13	4	-72.0
27 Slovakia	248	221	319	44	39	260	-	-	12	-	-100.0
28 Slovenia	32	36	-	-	-	-	158	77	-	-	-

Table 11 - Alberta Agri-Food Exports to Trans-Pacific Partnership Countries (TPP), 2006 - 2015, Value

	2006	2007	2008	2009	2010	2011	2012	2013r	2014r	2015p	2015/2014 % Change
	\$ Thousands										
Exports to TPP	3,958,094	4,236,139	5,256,851	4,263,555	3,887,208	4,573,608	5,199,444	5,111,563	5,971,345	6,019,962	0.8
% of Total	68.1	65.3	62.7	57.4	57.4	56.7	56.5	58.7	61.3	59.1	
1 United States (US)	2,606,735	2,697,170	3,212,989	2,703,726	2,431,171	2,550,749	2,967,055	3,049,960	3,936,307	3,997,783	1.6
2 Japan	786,066	906,621	1,195,606	919,261	827,649	1,171,516	1,345,995	1,288,407	1,197,409	1,100,971	-8.1
3 Mexico	398,179	455,580	606,214	438,059	460,144	640,239	632,455	536,302	537,275	572,487	6.6
4 Peru	41,095	37,820	49,791	77,480	64,972	66,467	69,637	90,890	131,313	149,975	14.2
5 Chile	11,731	13,621	40,191	44,035	15,784	24,490	32,065	20,020	75,263	57,298	-23.9
6 Vietnam	36,011	50,485	37,190	7,513	13,456	11,732	23,475	32,674	11,548	38,773	235.8
7 Malaysia	40,031	38,674	69,624	21,961	14,790	40,608	66,442	16,619	12,103	36,781	203.9
8 Singapore	6,918	12,512	9,775	13,023	15,387	13,447	21,049	38,525	36,901	26,735	-27.5
9 Australia	26,981	19,255	26,762	29,017	34,965	40,672	32,210	27,108	21,201	26,132	23.3
10 New Zealand	4,346	4,401	8,710	9,469	8,890	13,689	9,061	10,994	12,025	12,991	8.0
11 Brunei Darussalam	-	-	-	12	-	-	-	63	-	35	-
TPP Excluding the US	1,351,359	1,538,969	2,043,862	1,559,829	1,456,037	2,022,860	2,232,389	2,061,603	2,035,038	2,022,179	-0.6
% of Total	23.2	23.7	24.4	21.0	21.5	25.1	24.2	23.7	20.9	19.9	

r - revised p - preliminary

Source: Statistics Canada

Prepared by: Alberta Agriculture and Forestry, Economics and Competitiveness Branch, Statistics and Data Development Section