

Appendix 6
MPB Ranking Maps








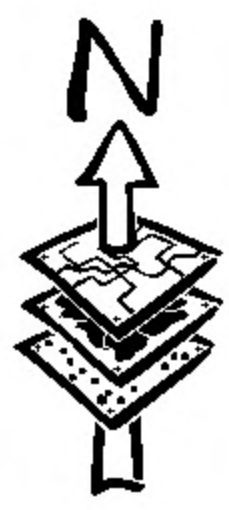
Spray Lake Sawmills

MPB Pine Ranking On SLS FMA Mapsheet 1 of 2

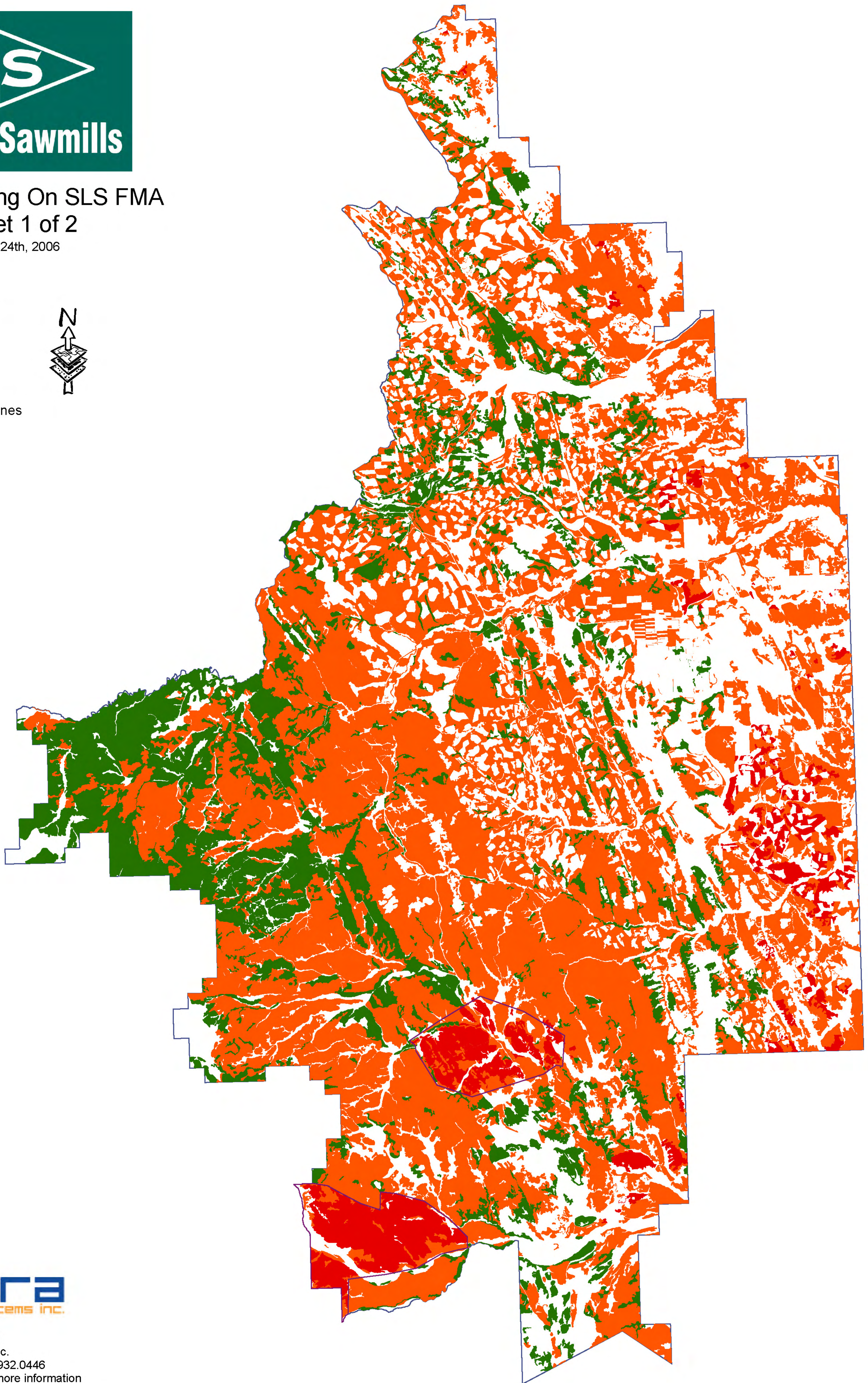
November 24th, 2006

Legend

-  FMA Boundary
-  Rank 1
-  Rank 2
-  Rank 3
-  MPB Priority Zones



Scale: 1:75,000



MPB SSI, Ranking and Mapping
performed by Tesera Systems Inc.
Contact: Dwight Crouse @ 403.932.0446
dwight.crouse@tesera.com for more information

While considerable diligence has been exercised to ensure the accuracy of this map, Tesera Systems Inc. is not responsible for any damages or losses resulting from its application in resource planning.






Copywrite 2006 Spray Lake Sawmills (1980) Ltd.



MPB Pine Ranking On SLS FMA Mapsheet 2 of 2

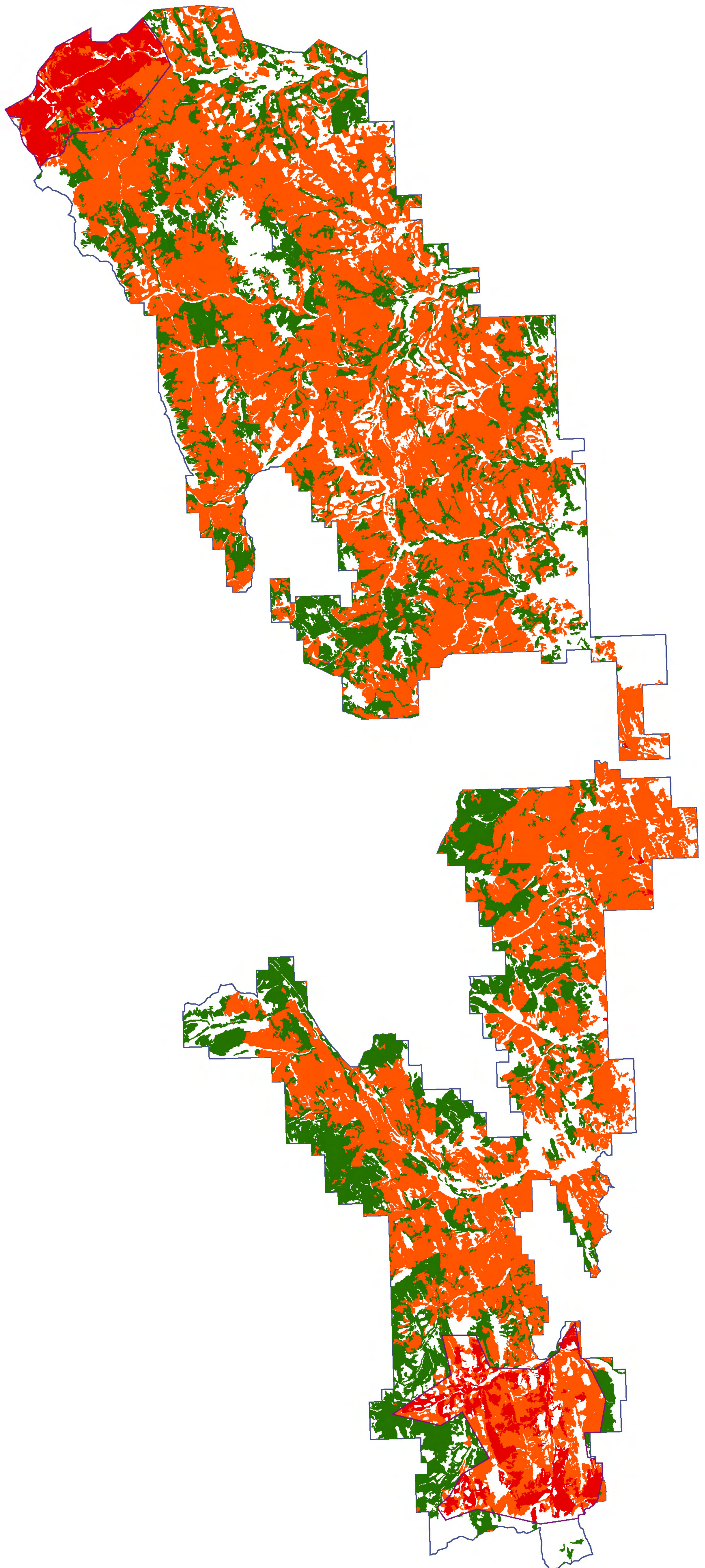
November 24th, 2006

Legend

-  FMA Boundary
-  Rank 1
-  Rank 2
-  Rank 3
-  MPB Priority Zones



Scale: 1:100,000



MPB SSI, Ranking and Mapping
performed by Tesera Systems Inc.
Contact: Dwight Crouse @ 403.932.0446
dwright.crouse@tesera.com for more information

While considerable diligence has been exercised to ensure the accuracy of this map, Tesera Systems Inc. is not responsible for any damages or losses resulting from its application in resource planning.

Copyright 2006 Spray Lake Sawmills (1980) Ltd.