



# Spray Lake Sawmills

## 25 Year Harvest Map Preferred Management Strategy South FMU

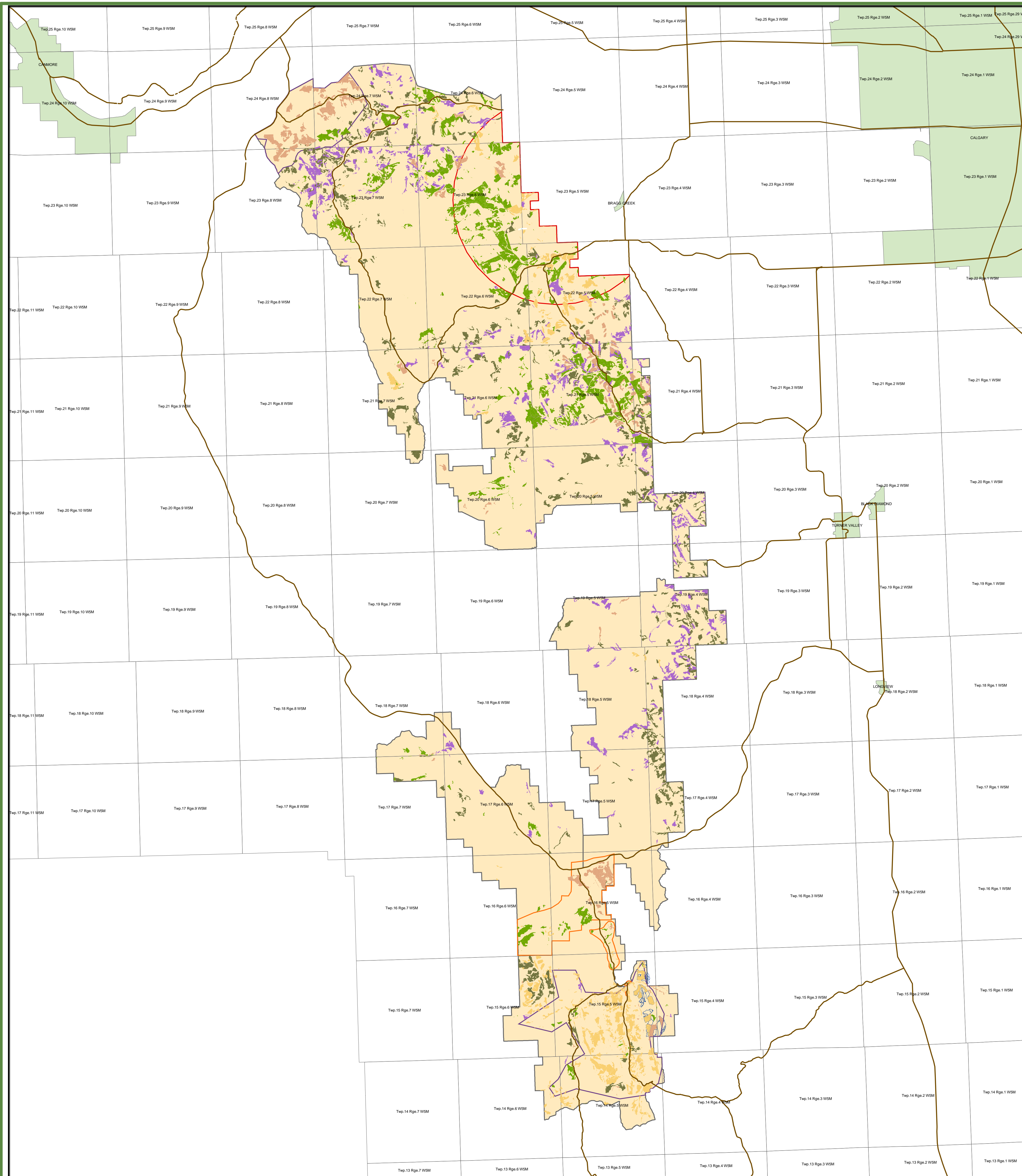
20-Year Adjacency w/ 4ha Minimum  
5-Year Regen Delay

### Legend

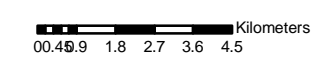
- Main Roads
- CTP Areas
- Fire Hazard Zones
- Cities, Towns, Villages
- Quota/Long-Term Permit Holders
- MPB Priority Areas
- Compartments

### Preferred Management Strategy

- 2001-2006
- 2006-2011
- 2011-2016
- 2016-2021
- 2021-2026



UTM Nad83 Zone 11 Projection  
Scale: 1 : 176,000  
November 23, 2006



Produced by: Tesera Systems Inc.  
Generated by: Dwight Crouse  
Telephone: (403) 932-0446  
Email: dwight.crouse@tesera.com



While considerable diligence has been exercised to ensure the accuracy of this map, Tesera Systems Inc. is not responsible for any damages or losses resulting from its application in forest development planning.

Copyright 2004 Spray Lake Sawmills

**Appendix 6 – 25-Year Harvest Sequence for the  
Preferred Management Strategy with 2 ha  
Minimum Adjacency**



# Spray Lake Sawmills

## 25 Year Harvest Map Preferred Management Strategy North FMU

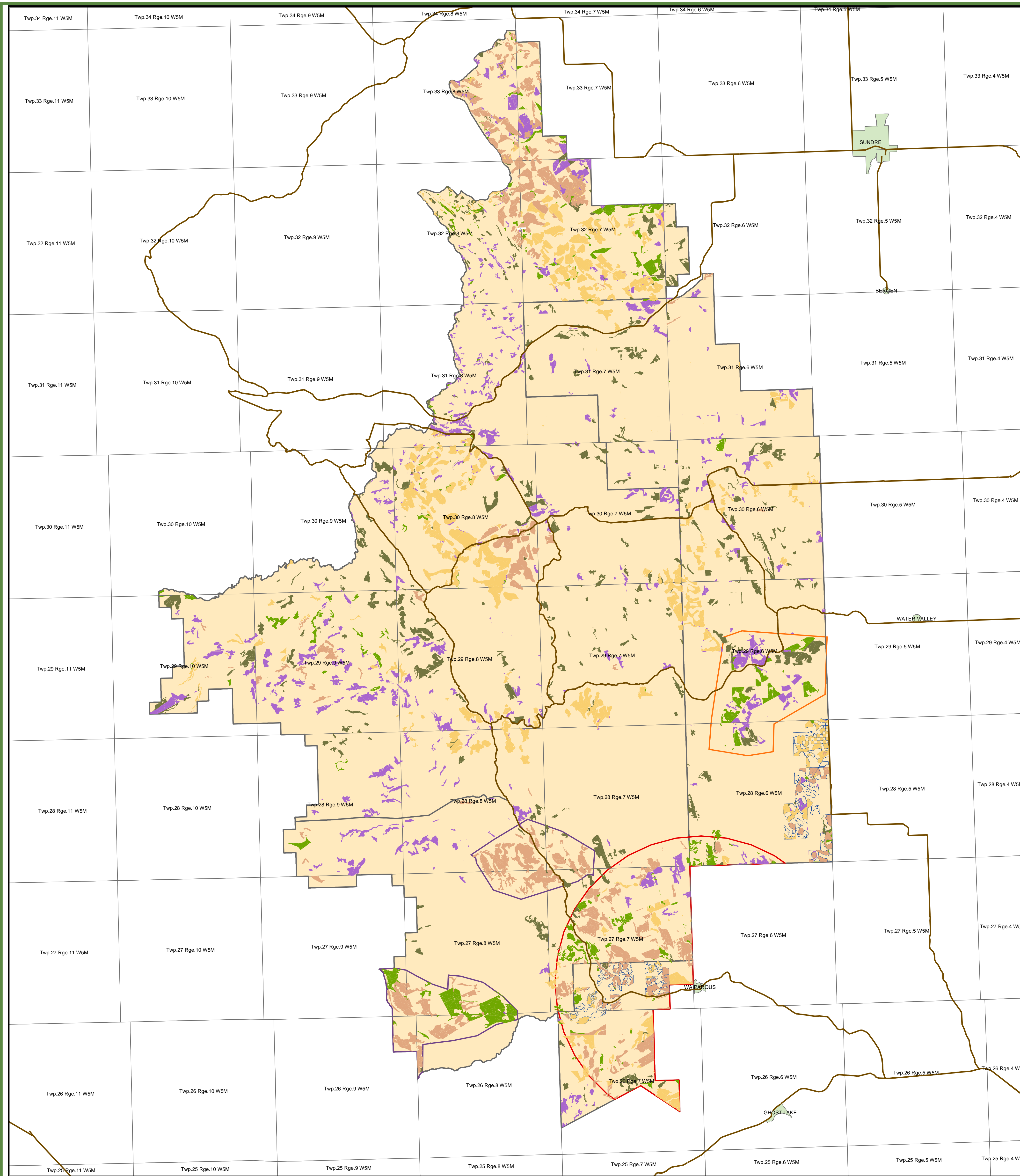
20-Year Adjacency w/ 2ha Minimum  
5-Year Regen Delay

### Legend

- Main Roads
- CTP Areas
- Fire Hazard Zones
- Cities, Towns, Villages
- Quota/Long-Term Permit Holders
- MPB Priority Areas
- Compartments

### Preferred Management Strategy, 2ha Adjacency

- 2001-2006
- 2006-2011
- 2011-2016
- 2016-2021
- 2021-2026



UTM Nad83 Zone 11 Projection  
Scale: 1 : 125,000  
November 23, 2006



Produced by: Tesera Systems Inc.  
Generated by: Dwight Crouse  
Telephone: (403) 932-0446  
Email: dwight.crouse@tesera.com



While considerable diligence has been exercised to ensure the accuracy of this map, Tesera Systems Inc. is not responsible for any damages or losses resulting from its application in forest development planning.

Copyright 2004 Spray Lake Sawmills



# Spray Lake Sawmills

## 25 Year Harvest Map Preferred Management Strategy South FMU

20-Year Adjacency w/ 2ha Minimum  
5-Year Regen Delay

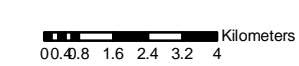
### Legend

- Main Roads
- CTP Areas
- Fire Hazard Zones
- Cities, Towns, Villages
- Quota/Long-Term Permit Holders
- MPB Priority Areas
- Compartments

### Preferred Management Strategy, 2ha Adjacency

- 2001-2006
- 2006-2011
- 2011-2016
- 2016-2021
- 2021-2026

UTM Nad83 Zone 11 Projection  
Scale: 1 : 175,000  
November 23, 2006



Produced by: Tesera Systems Inc.  
Generated by: Dwight Crouse  
Telephone: (403) 932-0446  
Email: [dwight.crouse@tesera.com](mailto:dwight.crouse@tesera.com)



While considerable diligence has been exercised to ensure the accuracy of this map, Tesera Systems Inc. is not responsible for any damages or losses resulting from its application in forest development planning.

Copyright 2004 Spray Lake Sawmills

