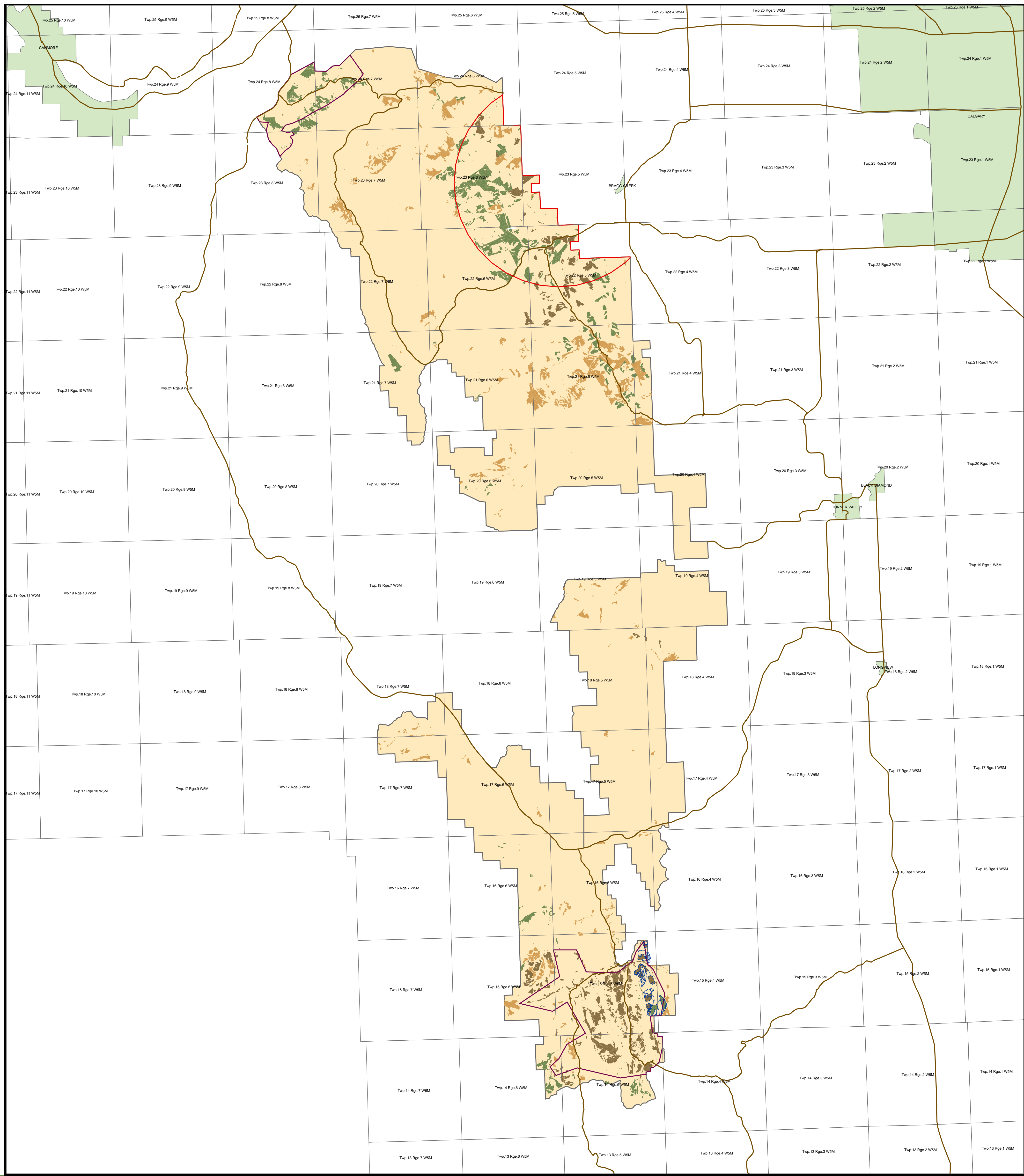





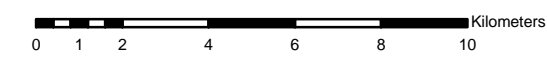
15 Year Harvest Map
Run 4 - FMA Surge Cut, South FMU
20-Year Adjacency
5-Year Regen Delay

Legend

- Main Roads
- Cataract Creek CTP Area
- Beetle Priority Zones
- Fire Hazard Zones
- Cities, Towns, Villages
- Compartments
- FMA Wide Surge Cut - South FMU**
 - 2001-2006
 - 2006-2011
 - 2011-2016



UTM Nad83 Zone 11 Projection
Scale: 1 : 175,000
November 3, 2004



Produced by: Tesera Systems Inc.
Generated by: Colin Lynch
Telephone: (403) 932-0443
Email: colin.lynch@tesera.com



While considerable diligence has been exercised to ensure the accuracy of this map, Tesera Systems Inc. is not responsible for any damages or losses resulting from its application in forest development planning.

Copyright 2004 Spray Lake Sawmills



**Ecosection (Wildlife Habitat Unit)
Rarity/Abundance in comparison
with the 15 Year Harvest from
SLS's Preferred Management
Strategy**

Legend

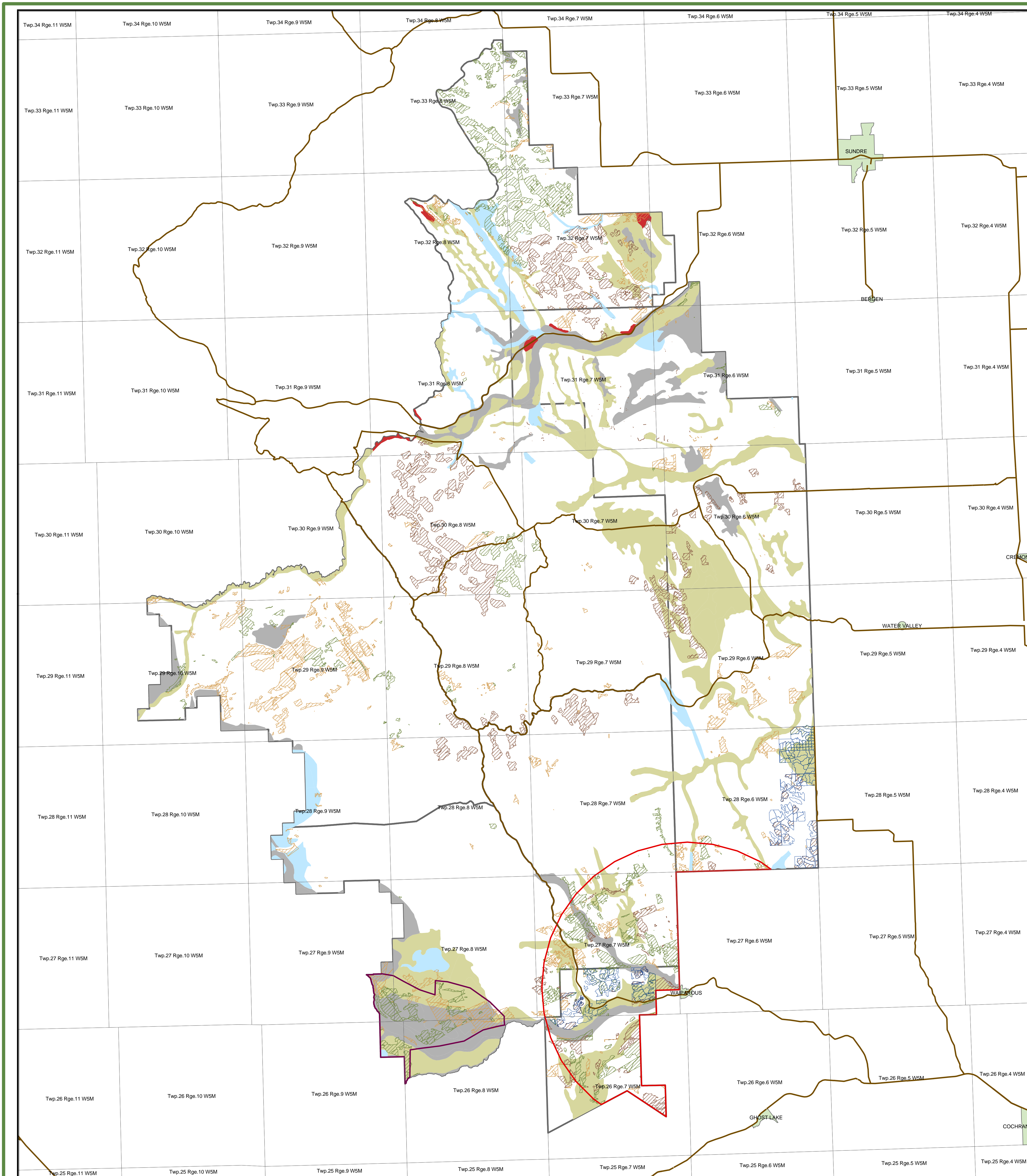
- Main Roads
- Ghost-Waiparous CTP Area
- Dogpound CTP Area
- Beetle Priority Zones
- Fire Hazard Zones
- Cities, Towns, Villages
- Compartments

FMA Wide Surge Cut - North FMU

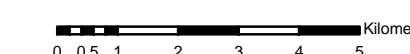
- 2001-2006
- 2006-2011
- 2011-2016

North FMU Ecosection - Abundance Classes

- Abundant
- Common
- Rare
- Scarce
- Uncommon



UTM Nad83 Zone 11 Projection
Scale: 1 : 125,000
November 3, 2004



Produced by: Tesera Systems Inc.
Generated by: Colin Lynch
Telephone: (403) 932-0443
Email: colin.lynch@tesera.com



While considerable diligence has been exercised to ensure the accuracy of this map, Tesera Systems Inc. is not responsible for any damages or losses resulting from its application in forest development planning.

Copyright 2004 Spray Lake Sawmills



**Ecosection (Wildlife Habitat Unit)
Rarity/Abundance in comparison
with the 15 Year Harvest from
SLS's Preferred Management
Strategy**

Legend

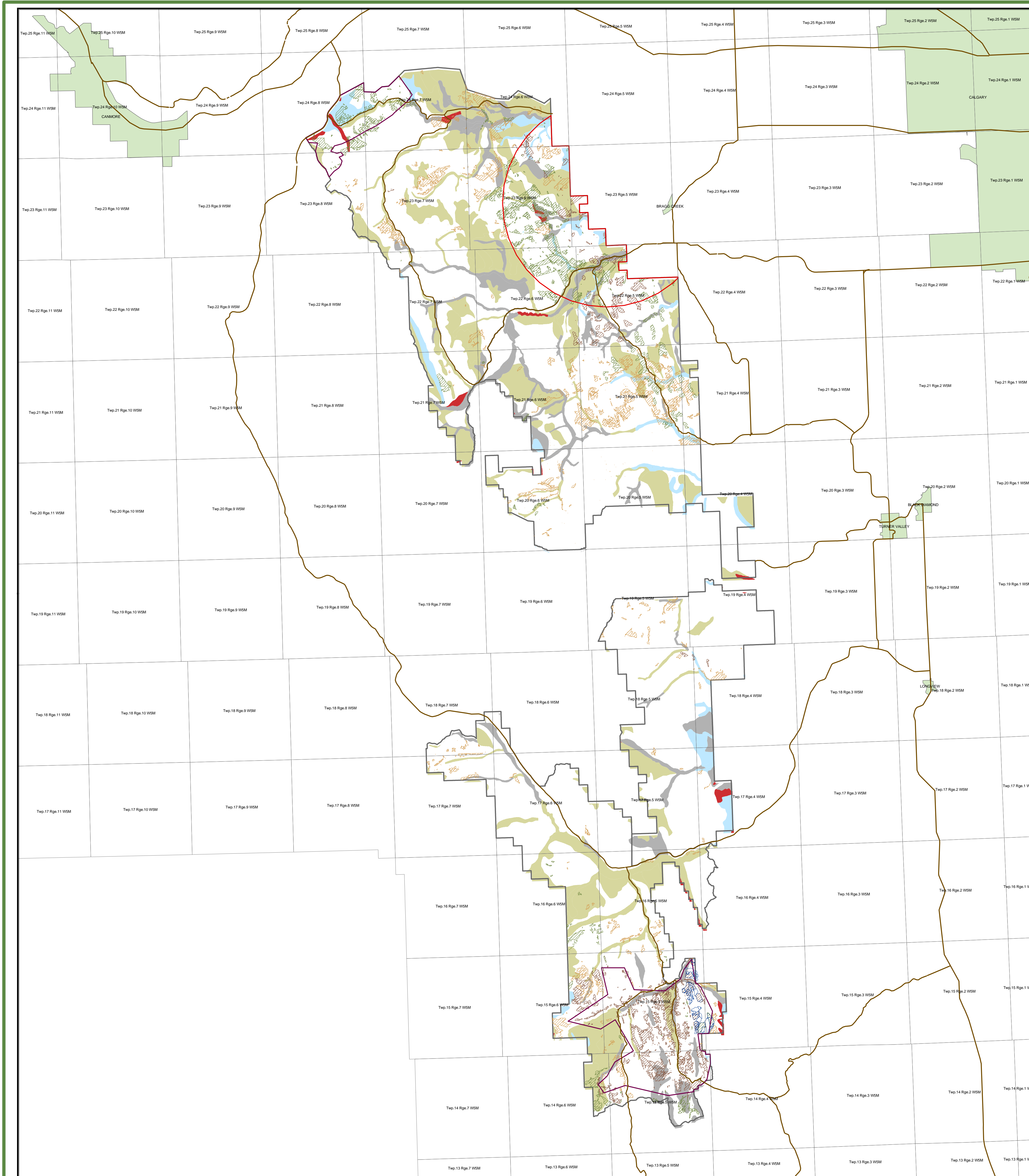
- Main Roads
- Cataract Creek CTP Area
- Beetle Priority Zones
- Fire Hazard Zones
- Cities, Towns, Villages
- Compartments

FMA Wide Surge Cut - North FMU

- 2001-2006
- 2006-2011
- 2011-2016

South FMU Ecosection - Abundance Classes

- Abundant
- Common
- Rare
- Scarce
- Uncommon



UTM Nad83 Zone 11 Projection
Scale: 1 : 125,000
November 3, 2004

Kilometers
00.489 1.8 2.7 3.6 4.5



Produced by: Tesera Systems Inc.
Generated by: Colin Lynch
Telephone: (403) 932-0443
Email: colin.lynch@tesera.com



While considerable diligence has been exercised to ensure the accuracy of this map, Tesera Systems Inc. is not responsible for any damages or losses resulting from its application in forest development planning.

Copyright 2004 Spray Lake Sawmills



Ecosite (Wildlife Habitat Unit) Rarity/Abundance in comparison with the 15 Year Harvest from SLS's Preferred Management Strategy

Legend

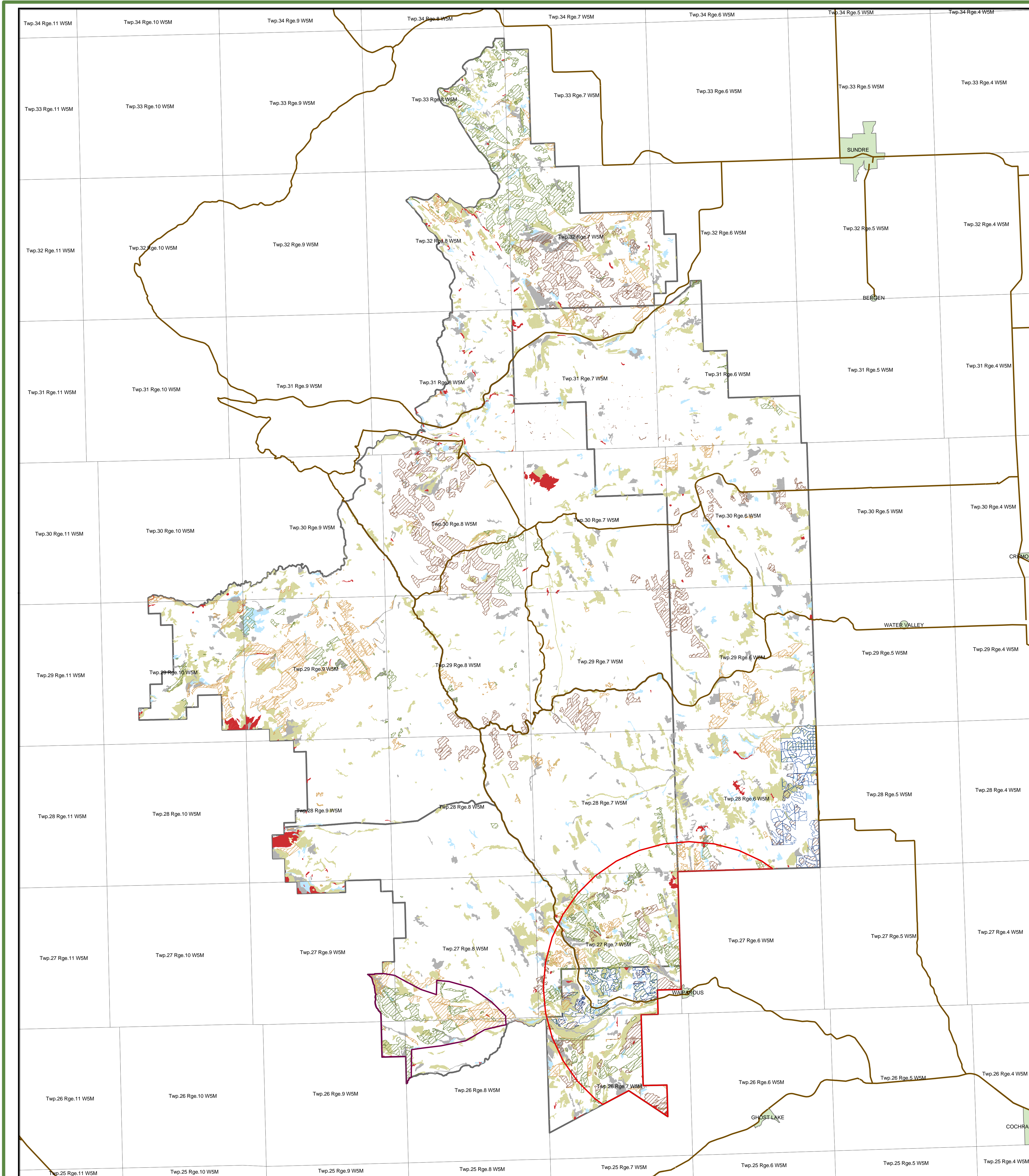
- Main Roads
- Ghost-Waiparous CTP Area
- Dogpound CTP Area
- Beetle Priority Zones
- Fire Hazard Zones
- Cities, Towns, Villages
- Compartments

FMA Wide Surge Cut - North FMU

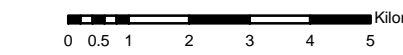
- 2001-2006
- 2006-2011
- 2011-2016

North FMU Ecosite - Abundance Classes

- Abundant
- Common
- Rare
- Scarce
- Uncomon



UTM Nad83 Zone 11 Projection
Scale: 1 : 125,000
November 3, 2004



Produced by: Tesera Systems Inc.
Generated by: Colin Lynch
Telephone: (403) 932-0443
Email: colin.lynch@tesera.com



While considerable diligence has been exercised to ensure the accuracy of this map, Tesera Systems Inc. is not responsible for any damages or losses resulting from its application in forest development planning.

Copyright 2004 Spray Lake Sawmills