

UP AND COMING PROBLEM WEEDS IN ALBERTA

Nicole Kimmel
Weed Specialist





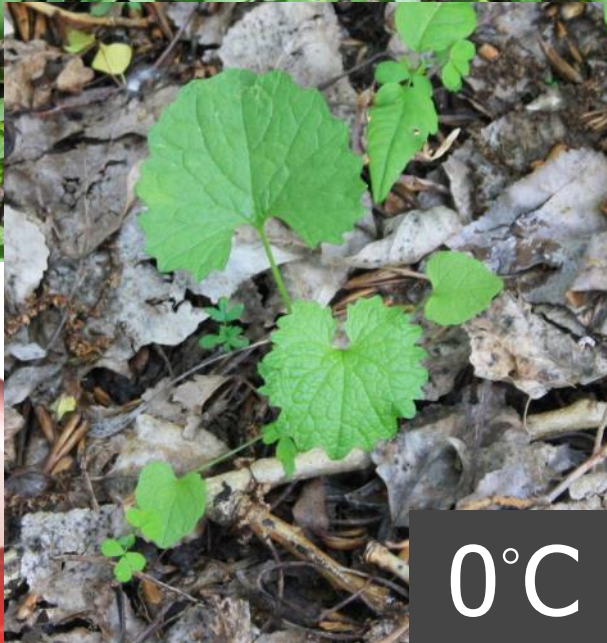
WEEDY TRAITS



INVASIVE ECOLOGY OF WEEDS

1965 BAKER'S LIST OF
IDEAL CHARACTERISTICS OF
WEEDS

Germinates in a wide range of environments.



0°C



Long-lived seeds that are internally controlled so that germination is discontinuous.



100 years



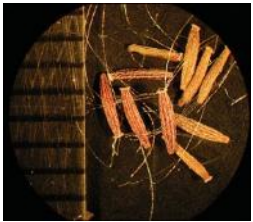
600 years



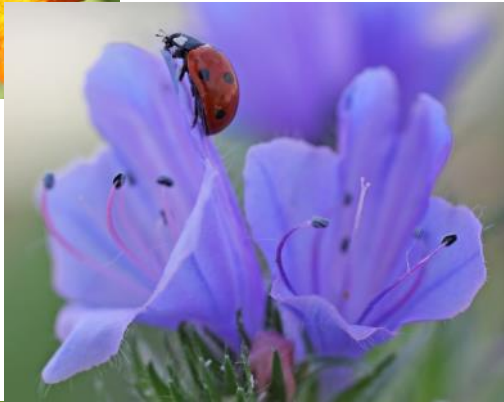
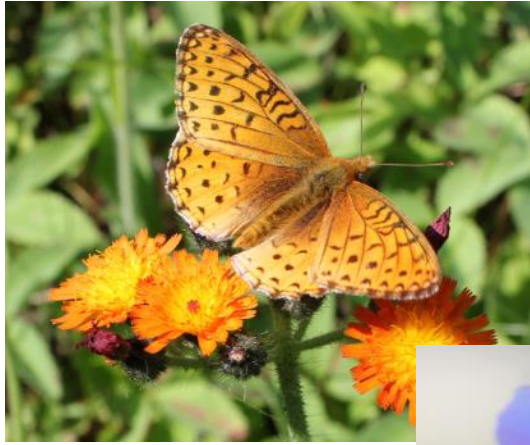
1700
years

Rapid growth from vegetative through flowering stage.

5 weeks



Self-compatible,
but not
completely.
Cross pollination
(when present) by
wind or generalist
insects.



Norm Boulet

Seeds produced continuously throughout the growth period.



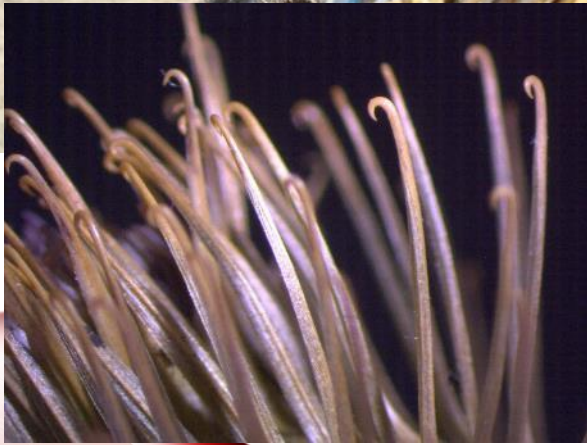
Seed production occurs under a wide range of environmental conditions.



High seed
output when
environmental
conditions are
favorable.



Seeds adapted to short and long distance dispersal.



If perennial, has a high rate of vegetative reproduction or regeneration from fragments.




If perennial, stems fragment easily, so it is difficult to pull from the ground.

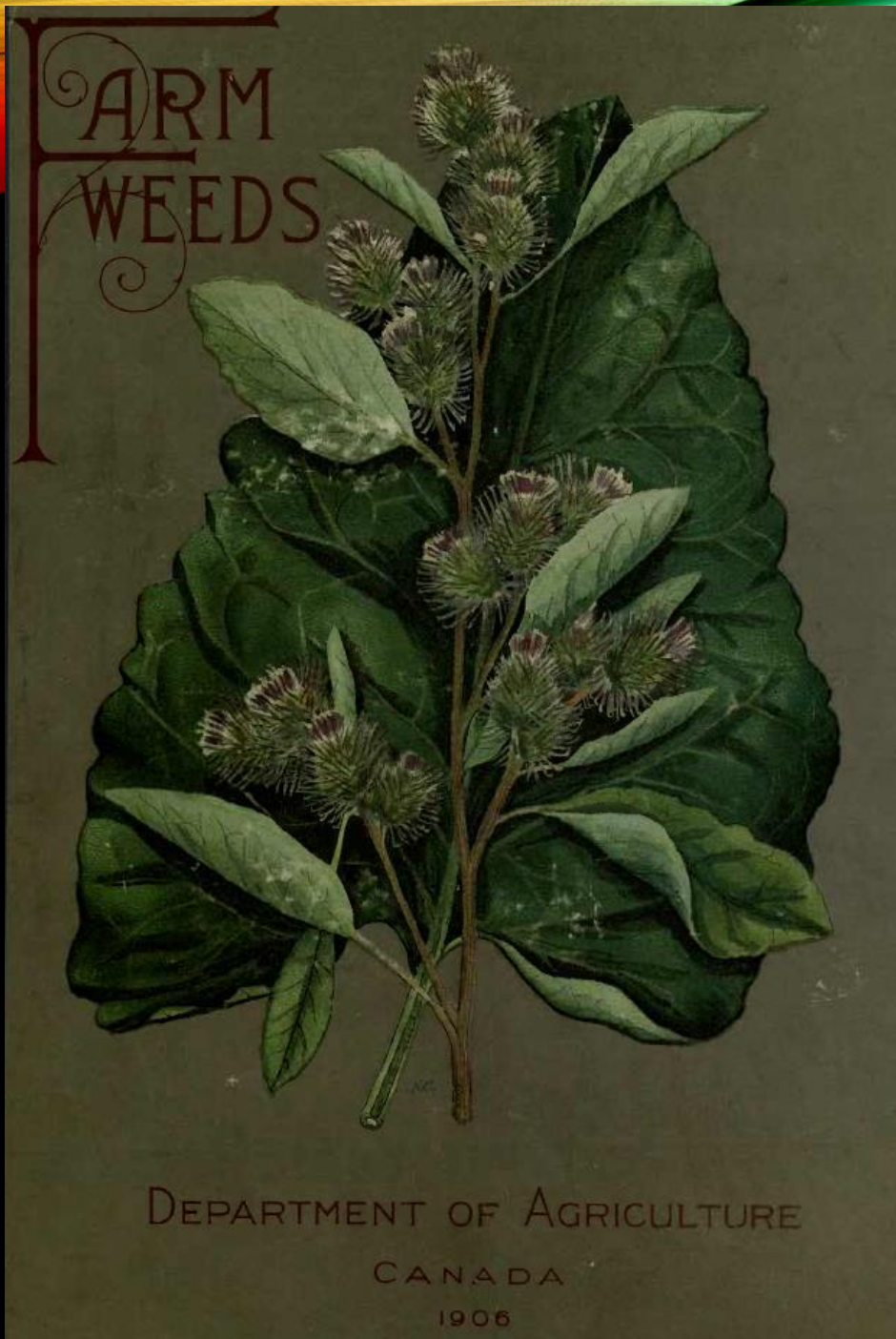


Strong potential to out compete other species via allelopathy, rosettes, rapid growth, and other means.





There are some weeds
so noxious that, if
farmers knew their **real**
character and recognized
them **on first appearance**,
they would **postpone all**
other business until they
were destroyed.



Canadian Advice from 1906



TRENDS IN WEED IDENTIFICATION

Marsh Willow Herb

Epilobium palustre



Field Violet

Viola arvensis



Marsh Cudweed

Gnaphalium uliginosum



Photos from Toby Newton



Yellow Cress
Rorippa palustris



Tumble Mustard

Sisymbrium altissimum

New England Wild Flower Society



Spokane Wildflowers



Nodding Thistle
Carduus palustre



Garden Orach

Atriplex hortensis



Baker Creek Heirloom Seeds



The Kitchen Garden Blog

Alberta Weed
Monitoring Network ■



QUESTIONS?

NICOLE KIMMEL

(780) 422 0885

nicole.kimmel@gov.ab.ca

RESOURCES

www.agriculture.alberta.ca/weeds

