



Landscape Alberta Nursery Trades Association

Presentation to the
Emerald Ash Borer Forum
February 16, 2011

Nigel Bowles
Executive Director

Landscape Alberta Nursery Trades Association

- ❑ **Established:** 1957
- ❑ **Members:** Nursery growers, garden centres, landscape contractors, arborists and turf producers
- ❑ **Activities:** Certification, business & technical training, publications, industry liaison, research & funding, lobbyists
- ❑ **National initiatives:** Vineland, Red Seal, Occupational standards
- ❑ **Administration:** Staff of 6 people located in Edmonton

Alberta Commercial Tree Nursery Profile

Outlook for Alberta's Commercial Tree Nursery Industry

Profile & Prospects



Landscape Alberta
Nursery Trades Association

Report prepared by



Major funding by

Agriculture & Food Council
the Centre

Alberta Commercial Tree Nursery Profile

▣ Number of Growers: 150

Alberta Commercial Tree Nursery Profile

- ▣ Number of Growers: 150
- ▣ Acres under production: 5,900

Alberta Commercial Tree Nursery Profile

- ▣ Number of Growers: 150
- ▣ Acres under production: 5,900
- ▣ Number of employees: 1,300

Alberta Commercial Tree Nursery Profile

- ▣ Number of Growers: 150
- ▣ Acres under production: 5,900
- ▣ Number of employees: 1,300
- ▣ Farm gate sales: \$77,000,000.00

Alberta Commercial Tree Nursery Profile (Growth since 1999)

- ▣ Number of Growers: 150
(70 + 54%)
- ▣ Acres under production: 5,900
(3,688 + 34%)
- ▣ Number of employees: 1,300
(537 2x)
- ▣ Farm gate sales: \$77,000,000.00
(\$28,000,000.00 2.3x)

Nursery Production

Number of growing seasons required to produce saleable ash spp. trees.

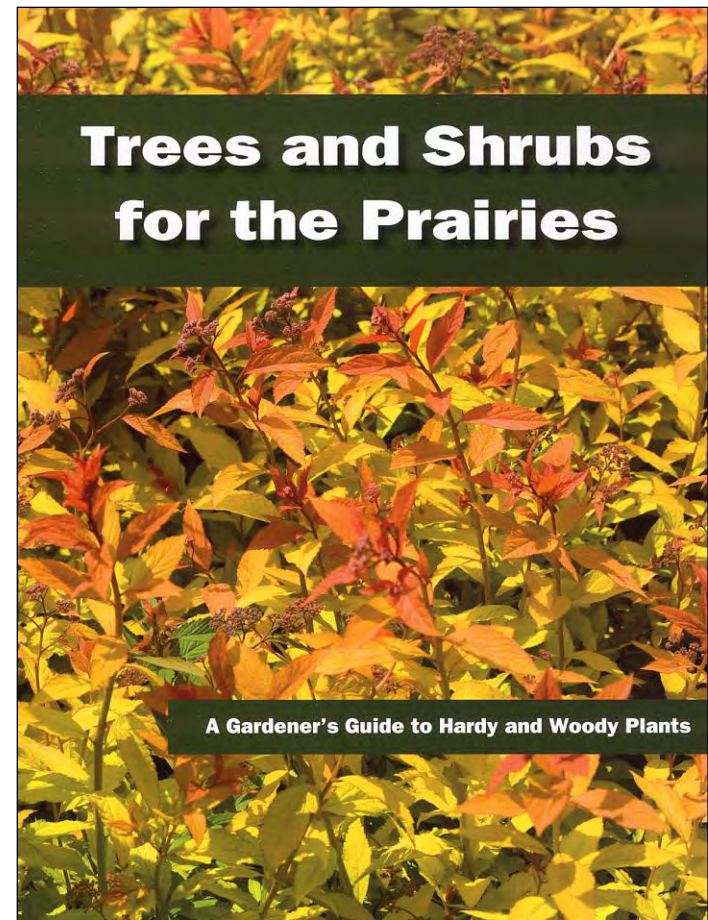
- ▣ 50 mm = 4 - 5 growing seasons
- ▣ 70 - 90 mm = 6 - 7 growing seasons
- ▣ Long-term investment to produce product

Nursery Production

Most popular species/cultivars of ash trees grown for the prairie market.

- Foothills Green Ash
- Northern Gem Ash*
- Northern Treasure Ash*
- Patmore Green Ash
- Prairie Spire Ash
- Manchurian Ash*

* Susceptible to Cottony psyllid



Nursery Production

Major buyers of ash spp. trees:

- ▣ 65% Landscape contractors
- ▣ 20% Governments
- ▣ 10% Others
- ▣ 5% Garden centres

Nursery Production

Production % committed to ash spp.

- ▣ Ranges between 5% and 40%
- ▣ Average ash spp. production, 18%
- ▣ Example. 5,000 trees in production = 900 ash trees

Nursery Production

Gross revenues (%) derived from the sale of ash spp.


- ▣ Ranges between 2% and 20%
- ▣ Average ash spp. revenues, 12%
- ▣ Example: Gross annual revenues @
 $\$2,000,000.00 \times 12\% = \$240,000.00$

EAB Monitoring



- ❑ Mixed responses
- ❑ Some nurseries monitor using traps, others visually, while some not specifically for EAB
- ❑ 6 Alberta nurseries enrolled in the national Clean Plants Program. (Highest in Canada.)

Clean Plants



Clean Plants

The Domestic Phytosanitary Certification Program
is administered in Canada under the



CANADIAN NURSERY CERTIFICATION INSTITUTE
INSTITUT DE CERTIFICATION DES PÉPINIÈRES DU CANADA

Emerald Ash Borer – Urban Impacts

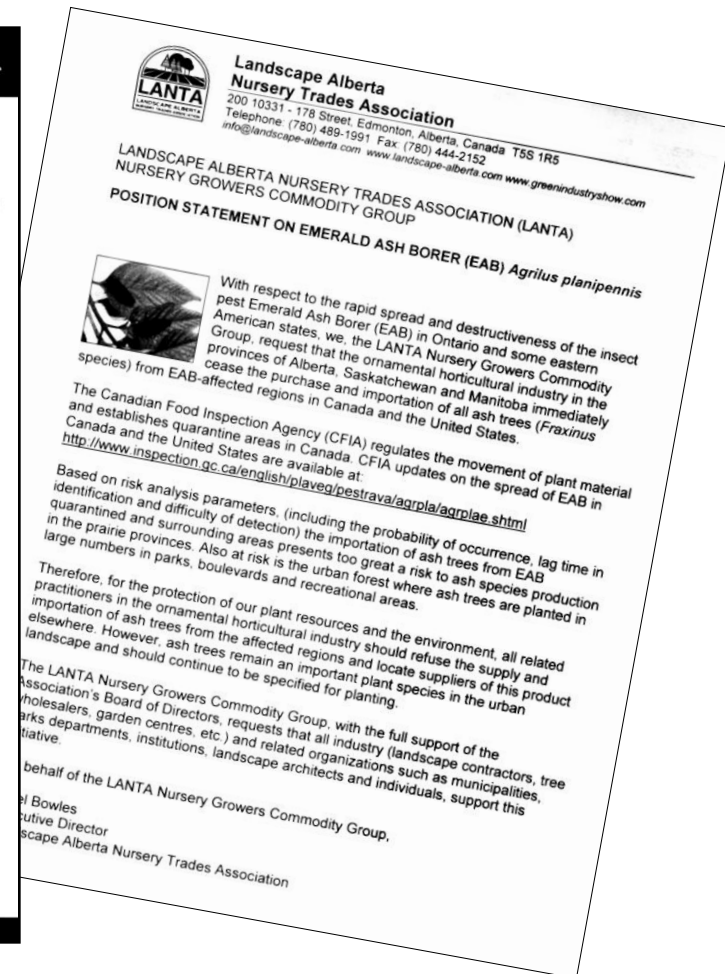
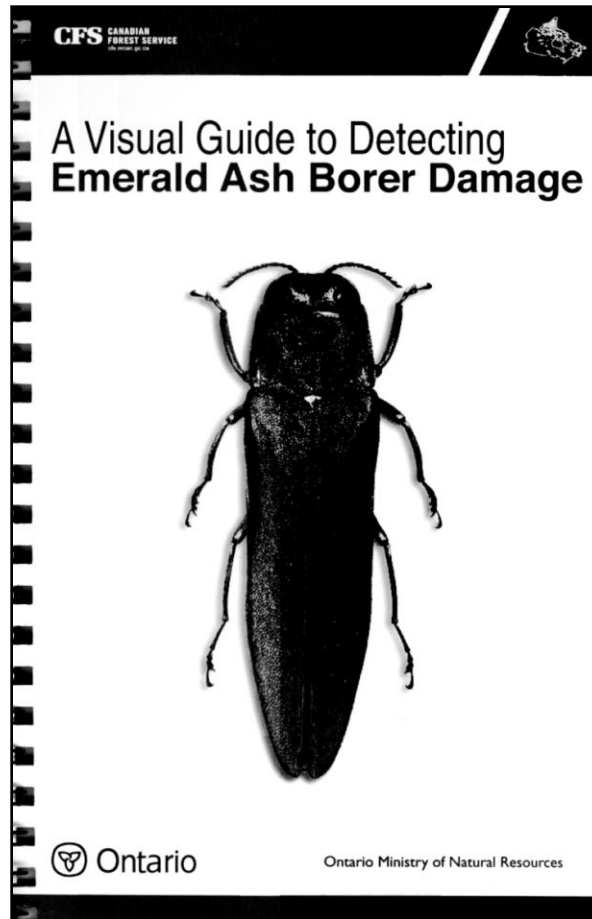
Nursery growers main concerns:

- ❑ Movement of firewood
- ❑ Contractors/municipalities buying ash trees from eastern Canada or US
- ❑ Restrictive planting
- ❑ Creation of monocultures

Testing of Rural and Urban Shade Trees Program

- ▣ Addressing concerns that current rural and **urban forests in Canada's colder climate** zones are at risk from invasive pest species
- ▣ Diverse list of alternative tree cultivars is lacking
- ▣ Approximately 150 cultivars will be evaluated through this project

Industry Information



Questions
