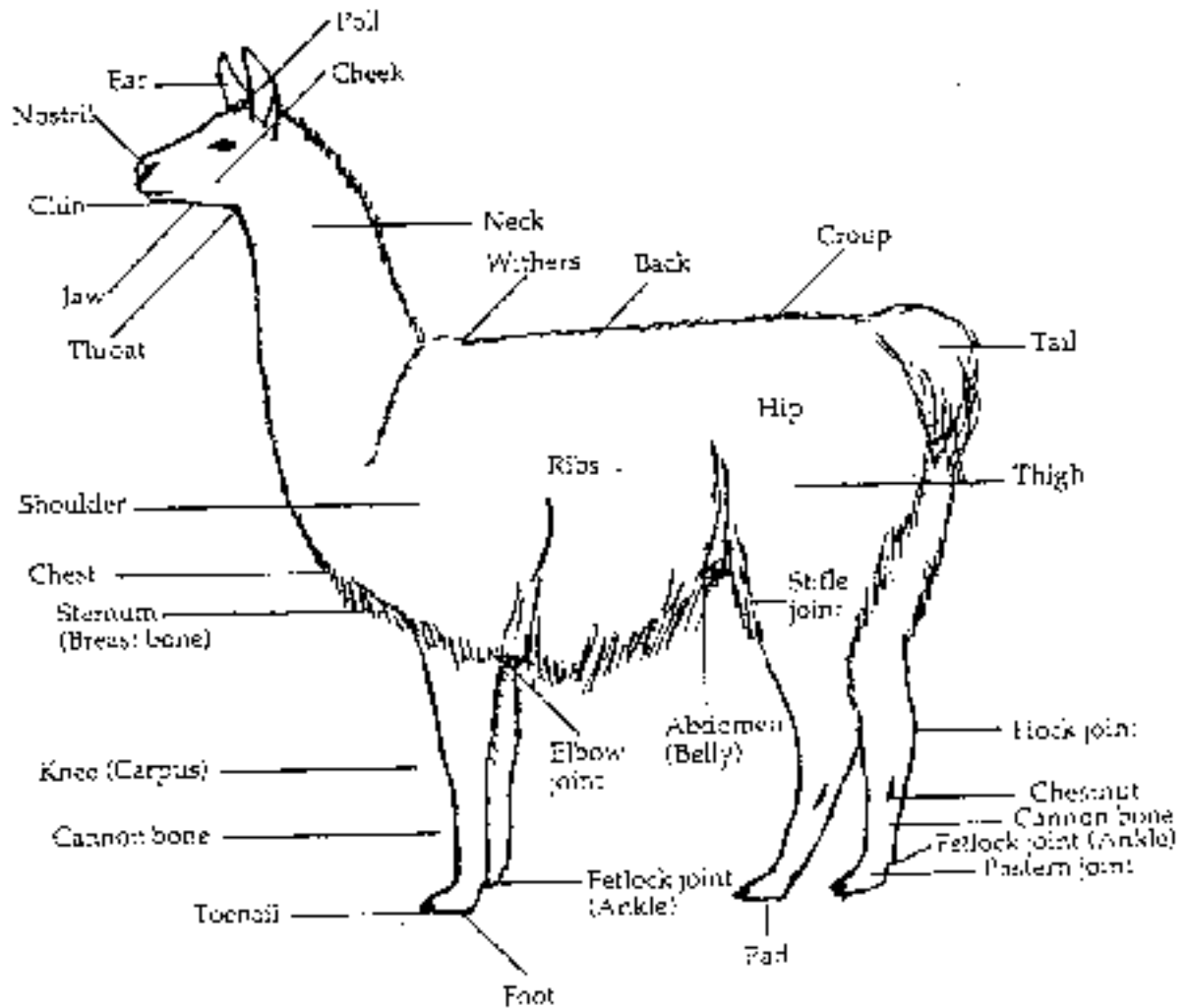


Judging Llama

Parts of the Llama



General Appearance

- Overall balance and style
- Muscling
- Condition
- Tail head setting
- Size, scale (average height is 40-45" at shoulder)
- Breed and sex character
- Well sprung rib

Head and Neck

- Clear, bright eyes
- Teeth meet properly
- Ears shaped according to breed
- Medium to long length neck

Feet and Legs

- Proper set to leg
- Sturdy thick bone
- Clean thighs and legs
- Strong, flexible pasterns
- Straight bones and front legs
- Legs nearly straight when viewed from rear

Wool

- Good quality fibre
- Colour and type according to breed

Movement

- Smooth gait
- Correct movement in front and rear legs
- No excessive head or tail movement
- Feet move in a straight line
- Correct length of stride
- Straight topline

Disposition

- A hereditary trait
- Important in training llamas
- Especially important for pack llamas

Source: 4-H Ontario Judging Tool Kit