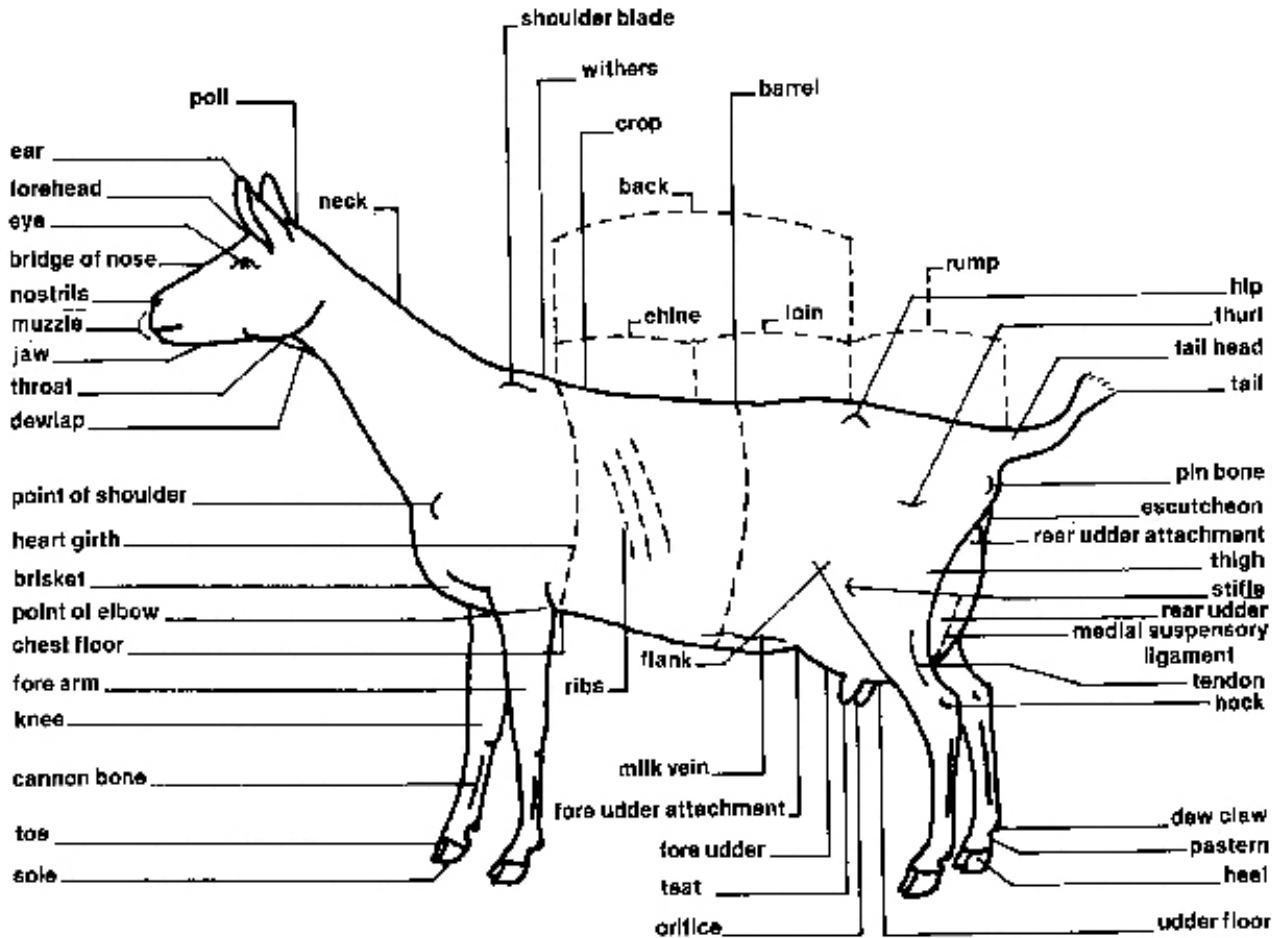


Judging Goats

Parts of the Goat



Dairy Goat Scorecard

	Perfect Score	
	Doe	Buck
General Appearance.....	35	54
Attractive individuality indicating femininity, vigour, strength and stretch with a harmonious blending and correlation of parts, impressive style and attractive carriage; graceful and powerful walk.		
	Doe	Buck
• Style (includes shoulders)	5	8
• Breed Character and Head	5	8
• Topline	5	8
• Rump	8	10
• Feet and Legs.....	12	20
Body Capacity	15	23
Relatively large in proportion to the size of the animal, providing ample digestive capacity, strength and vigour; width throughout, starting at head.		
<ul style="list-style-type: none"> • wide, deep barrel and heart girth • wide in head, full in crops • wide through back and loin • wide chest floor between front legs • full at elbow 		
Dairy Character	15	23
Animation, angularity, general openness and freedom from excess tissue, giving due regard to stage of lactation for does.		
<ul style="list-style-type: none"> • long, lean neck blending into shoulders • well-defined withers • flat, long, well-sprung ribs • fine-textured, loose, supple skin; fine hair • lean and angular lines 		

	Perfect Score	
	Doe	Buck
Mammary System (Does only).....	35	0

A capacious, strongly attached, well-balanced udder of good quality, indicating heavy production and a long period of usefulness.

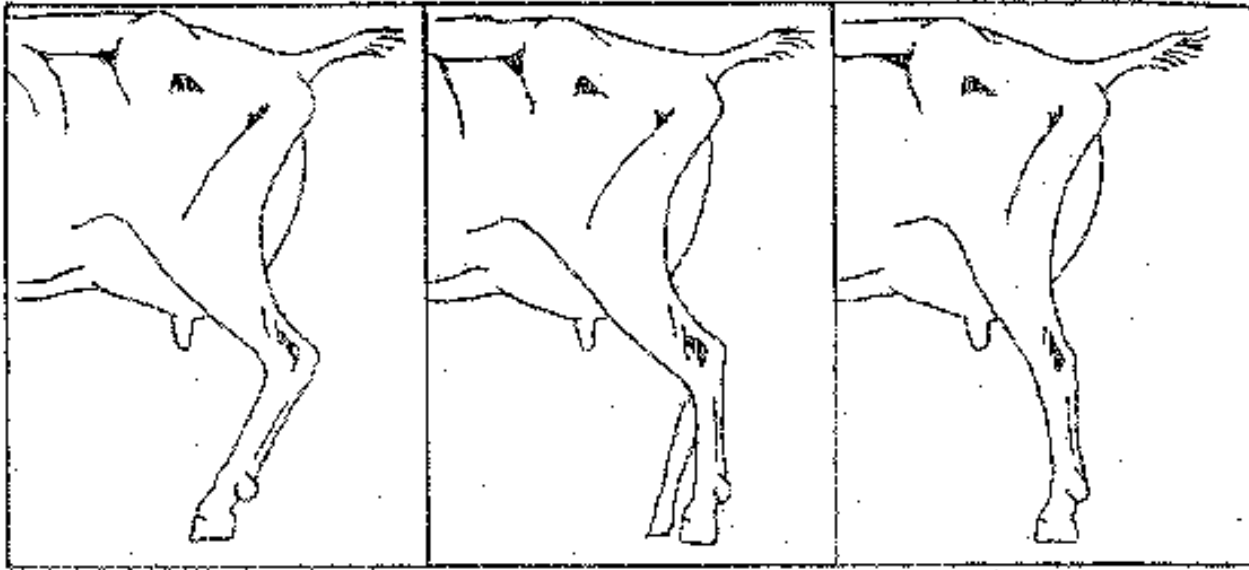
- Medial suspensory ligament, shape, texture 15
- Fore Udder 8
- Rear Udder 8
- Teats 4

Judge's Eye

The ideal slope of rump should resemble the middle diagram. The goat on the left has an extremely steep slope of rump, while the goat on the right has a level rump; both undesirable characteristics.



The set of the rear legs should resemble the middle diagram. The goat on the left has extremely sickled legs, while the goat on the right has extremely posty rear legs; both undesirable sets of legs.



Scorecard courtesy of the Canadian Goat Society. Diagrams copyright 2000 Angela Beltane for the CGS.

Source: 4-H Ontario Judging Tool Kit

Market Kid Scorecard

Perfect Score

General Appearance.....	30
Quality and Condition.....	15
• well muscled, with smooth firm flesh	
• clean, strong bone	
• smooth, glossy hair and loose, supple skin	
Size and Development.....	15
• size appropriate to age; high growth preferred	
Fore Quarters	25
Shoulders	10
• well muscled with smooth, firm flesh	
• withers barely defined	
Brisket.....	7
• broad, deep and muscular	
Forelegs	8
• heavily muscled, round, clean bone	
• strong, straight legs with strong, flexible pasterns	
Hind Quarters.....	25
Rump	10
• long and broad with smooth, firm flesh	
Twist and Thighs.....	10
• low, wide, well fleshed twist	
• deep, wide, firm and muscular thighs	
Hind legs	5
• clean and strong bone	

Body.....	15
Capacity.....	2
• ample room for digestive system	
Heart girth.....	2
• large girth with wide chest floor	
• fullness at point of elbow	
Barrel.....	4
• deep and broad; well supported	
Loin.....	7
• broad and strong with full, deep flanks	
Head and Neck.....	5
Head.....	2
• clear, bright eyes; large, open nostrils	
Neck.....	3
• medium length, strong and thick	
• blending smoothly into shoulder and brisket	
Total.....	100

Source: 4-H Ontario Judging Tool Kit