

Alberta Livestock Industry in 2008.....

Table No.

48. Livestock on Farms, Canada and Provinces, July 1, 1997-2008

49. Cattle and Calves on Alberta Farms, July 1, 1963-2008.....

50. Pigs on Alberta Farms, July 1, 1965-2008

51. Sheep and Lambs on Alberta Farms, July 1, 1965-2008.....

52. Livestock Slaughtered, Canada and Provinces, 2001-2008

53. Livestock Slaughtered in Alberta, 1998-2008

54. Summary of Alberta Slaughter Hog Marketings, 1999-2008.....

55. Alberta Supply and Disposition Livestock Balance Sheet, 2006-2008

56. Alberta Direct to Packer Sales, 1998-2008

57. Alberta Slaughter Cattle Prices, 1998-2008

58. Average Feeder Cattle Prices, Edmonton, 1996-2008

59. Average Feeder Cattle Prices, Southern Alberta, 1996-2008

60. Average Calf Prices, Edmonton, 1996-2008.....

61. Average Calf Prices, Southern Alberta, 1996-2008.....

62. Alberta Average Slaughter Hog Prices (Index 100), 1997-2008.....

63. Central Alberta Average Market Lamb Prices (95-115 Lbs.), 1997-2008.....

64. Alberta Sheep and Lamb Marketings, 1997-2008.....

65. Alberta Brand Inspection Record of Live Cattle and Calf Shipments Out-of-Province, 2007 and 2008.....

66. Registrations and Sales of Registered Horses in Alberta, 1999-2008.....

67. Alberta Horse Meat Exports by Destination, 1999-2008.....

68. Alberta Game Farming Industry, 1999-2008.....

69. Alberta Dairy Industry, 2002-2008.....

70. Output and Value of Poultry Meats, Alberta, 1997-2008.....

71. Production, Disposition and Value of Eggs, Alberta, 1997-2008.....

72. Chickens Slaughtered in Registered Stations, Alberta, 1996-2008.....

Alberta Livestock Industry in 2008

Cattle and Calves

The size of the cattle and calf herd in Alberta decreased in 2008. Estimates, as of July 1, 2008, showed annual numbers down 6.2 per cent to 6.0 million head, from 6.4 million head in 2007. Lower inventories were typical of all cattle classes, with the exception of calves, dairy cows and dairy heifers (replacements). The overall inventory decline is largely attributed to a number of factors including high feed costs, the continued strength of the Canadian dollar and strong marketings of animals over the past year.

The provincial beef breeding herd comprised of cows and heifers, contracted by 5.8 per cent to 2.2 million head. The number of beef cows fell 5.8 per cent to 2.0 million head, while beef heifers for replacement decreased 6.0 per cent from a year ago, to 267,000 head. Steers on farms fell 19.5 per cent, to 805,000 head after a record high of 1.0 million head the previous year. Heifers for slaughter were down 10.2 per cent, to 750,000 head. Total calves on farms increased marginally by 0.8 per cent, to 2.0 million head. With respect to the size of the provincial dairy herd (cows and heifers), numbers rose 4.1 per cent, to 126,000 head. Milk cows increased 3.6 per cent, while replacement dairy heifers increased 5.3 per cent, to an estimated 86,000 head and 40,000 head, respectively.

The July 1 Canadian cattle and calf inventory fell by 4.3 per cent from a year ago, to 15.2 million head. Alberta continues to lead the nation in cattle and calf inventories (6.0 million head), followed by Saskatchewan (3.4 million head), and Ontario (1.9 million head). Currently, Alberta accounts for 51.5 per cent of the Western Canadian herd of 11.7 million head, and 39.6 per cent of the national total of 15.2 million head.

Preliminary data pegged Alberta's annual total cattle slaughter (excluding calves), in federally and provincially inspected plants at 2.3 million head in 2008, a 3.9 per cent increase from 2007. Steers and heifers made up the bulk of the slaughter, and together accounted for 81.7 per cent of the total. Cow slaughter increased to 415,040 head, up 14.5 per cent from 2007.

Nationally, in 2008, cattle slaughter (excluding calves), in federally and provincially inspected plants totalled 3.5 million head, with Alberta accounting for 66.5 per cent. Also, Alberta contributed 89.2 per cent to the total Western Canadian kill of 2.6 million head.

Slaughter cattle prices were up in 2008, compared to 2007. For slaughter steers, the average price increased 0.3 per cent to \$88.57 per cwt., while the price for slaughter heifers rose 0.1 per cent to \$88.44 per cwt. Average slaughter bull price strengthened to \$52.33 per cwt., or 46.0 per cent above the 2007 level. Average slaughter cow prices (D1/D2), increased by 14.5 per cent to \$43.56 per cwt.

Total live cattle and calf shipments from Alberta in 2008, as per brand inspection records, decreased 20.8 per cent from a year earlier to 690,170 head. This was fuelled largely by a decline in live cattle exports to the United States. Cattle and calf shipments are comprised of feeders, slaughter, and breeding animals.

Live feeder cattle and calf shipments to all destinations in 2008 totalled 214,498 head, 17.0 per cent lower than in 2007. A total of 128,486 head were shipped to other provinces, with the remainder exported to the United States and other regions.

Total shipments of cattle and calves for slaughter fell 22.5 per cent to 457,159 head compared to a year ago. Of the total shipments destined for slaughter, 85.7 per cent were shipped to the United States.

Shipments of live replacement cattle and calves fell by 21.7 per cent, to 18,513 head. The majority of replacement cattle (92.8 per cent) were shipped to other Canadian provinces.

Pigs

As of July 1, 2008, the estimated number of pigs on farms in Alberta was 1.7 million head, down 15.2 per cent from 2.0 million head in 2007. The market hog inventory declined to 1.5 million head, down 15.8 per cent from a year earlier. Alberta's breeding stock inventory of boars, sows, and bred gilts fell 9.8 per cent to 171,000 head, marking the sixth consecutive decline on a "year-over-year" basis for breeding stock. Boar numbers fell to 6,000 head from 6,900 head a year earlier, due to increased usage of artificial insemination.

Among the provinces, Alberta continued to rank fourth in pig inventories behind Quebec (4.1 million head), Ontario (3.2 million head) and Manitoba (2.7 million head). For Western Canada, the size of the pig herd was 5.5 million head, with Alberta accounting for 30.5 per cent. Alberta also accounted for 12.9 per cent of the national pig inventory of 13.0 million head.

In 2008, hog slaughter in federally and provincially inspected plants in Alberta totalled 2.7 million head, or 8.0 per cent lower than in 2007. Decreasing, as well, were slaughter hog marketings (or hogs of Alberta origin slaughtered in Canada), which

fell 9.2 per cent to 3.0 million head. The 2008 average Alberta index 100 hog price decreased 0.8 per cent from 2007, to \$1.18 per kilogram.

Sheep and Lambs

Inventory estimates as of July 1, 2008, show the size of the provincial of sheep and lamb flock falling to 185,000 head, down 9.8 per cent from a year earlier. Declines in numbers were noted for all animal classes. Among the provinces, Alberta ranked third in sheep and lamb inventories after Ontario (295,000 head), and Quebec (290,000 head). The size of the Western Canadian flock was 436,000 head as of July 1 2008, with Alberta accounting for 42.4 per cent of the total. Nationally, there were 1.1 million head of sheep and lambs on farms with Alberta contributing 17.4 per cent.

Apiculture

The estimated number of beekeepers in Alberta decreased in 2008, falling 3.6 per cent from 2007, to 700. The number of colonies went up to 240,000, from 237,000 in 2007.

Preliminary estimates peg Alberta honey production in 2008 at 9,800 tonnes, down 25.3 per cent from 2007. Nationally, total honey production in 2008 was estimated at 28,112 tonnes, down 10.7 per cent from 2007. Alberta accounted for 34.9 per cent of the national honey production in 2008, while only possessing 9.9 per cent of Canada's beekeepers. Alberta accounts for 41.0 per cent of the national number of colonies. In addition, the average colony in Alberta had an estimated yield of 41 kilograms of honey, down 25.5 per cent from 55 kilograms in 2007.

Table 48: Livestock on Farms, Canada and Provinces, July 1, 1997-2008

	Canada	Alberta	Sask.	Manitoba	British Columbia	Ontario	Quebec	Atlantic Provinces
<i>Cattle and Calves - '000 Head</i>								
1997.....	15,058.3	5,848.0	2,834.0	1,449.0	835.0	2,294.0	1,466.0	332.3
1998.....	14,944.4	6,045.0	2,747.0	1,447.0	790.0	2,204.0	1,386.5	324.9
1999.....	14,753.4	6,056.0	2,719.0	1,400.0	800.0	2,120.0	1,343.0	315.4
2000.....	14,968.4	6,279.0	2,750.0	1,400.0	805.0	2,097.0	1,335.0	302.4
2001.....	15,424.5	6,500.0	2,900.0	1,425.0	815.0	2,130.0	1,360.0	294.5
2002.....	15,420.9	6,387.0	2,940.0	1,470.0	836.5	2,125.0	1,370.0	292.4
2003.....	15,670.0	6,100.0	3,220.0	1,590.0	885.0	2,160.9	1,420.0	294.1
2004.....	16,610.0	6,400.0	3,540.0	1,730.0	950.0	2,180.3	1,515.0	294.7
2005.....	16,880.0	6,700.0	3,625.0	1,735.0	915.0	2,154.6	1,455.0	295.4
2006.....	16,000.0	6,300.0	3,450.0	1,680.0	820.0	2,032.6	1,425.0	292.4
2007.....	15,885.0	6,410.0	3,430.0	1,540.0	805.0	1,956.0	1,395.0	289.0
2008.....	15,195.0	6,010.0	3,385.0	1,515.0	750.0	1,881.2	1,375.0	278.8
<i>Pigs - '000 Head</i>								
1997.....	11,672.4	1,822.0	862.0	1,809.5	171.0	3,123.9	3,542.5	341.5
1998.....	12,357.1	1,880.9	930.8	1,998.6	177.1	3,331.0	3,662.5	376.2
1999.....	12,688.8	1,848.2	917.8	2,044.0	173.7	3,381.3	3,949.3	374.5
2000.....	13,401.0	1,918.2	1,028.4	2,295.5	167.9	3,515.9	4,095.1	380.0
2001.....	14,050.4	2,029.4	1,129.1	2,556.0	168.3	3,476.2	4,294.4	397.0
2002.....	14,715.0	2,140.9	1,230.4	2,785.0	168.0	3,655.9	4,353.1	381.7
2003.....	14,720.0	2,030.0	1,250.0	2,850.0	160.0	3,714.5	4,350.0	365.5
2004.....	14,980.0	2,030.0	1,350.0	2,890.0	155.0	3,849.4	4,350.0	355.6
2005.....	15,195.0	2,000.0	1,395.0	2,940.0	144.0	3,995.4	4,384.0	336.6
2006.....	15,065.0	2,056.0	1,389.0	2,980.0	135.0	3,929.6	4,250.0	325.4
2007.....	14,690.0	1,970.0	1,320.0	2,965.0	129.0	3,886.8	4,120.0	299.2
2008.....	12,980.0	1,670.0	971.0	2,720.0	120.0	3,237.0	4,075.0	187.0
<i>Sheep and Lambs - '000 Head</i>								
1997.....	821.5	225.7	73.8	42.1	68.5	226.4	141.3	43.7
1998.....	892.0	225.0	89.0	50.0	75.0	249.0	159.7	44.3
1999.....	979.0	240.0	98.0	60.0	73.0	275.0	185.6	47.4
2000.....	1,105.3	270.0	123.0	69.0	72.0	312.0	212.6	46.7
2001.....	1,247.7	287.0	149.0	84.0	85.0	340.0	256.0	46.7
2002.....	1,252.1	288.0	155.0	78.0	70.0	335.0	279.0	47.1
2003.....	1,247.2	255.0	145.0	82.0	73.0	353.0	292.0	47.2
2004.....	1,240.5	248.0	160.0	82.0	75.0	340.0	290.0	45.5
2005.....	1,190.5	239.0	142.0	78.0	76.0	310.0	302.0	43.5
2006.....	1,151.2	228.0	133.0	68.5	62.5	311.0	307.0	41.2
2007.....	1,095.7	205.0	120.0	70.0	58.0	305.0	295.0	42.7
2008.....	1,062.0	185.0	125.0	66.0	60.0	295.0	290.0	41.0

Source: Statistics Canada Cat. No. 23-012-X, "Cattle Statistics"; Cat. No. 23-010-X, "Hog Statistics"; and Cat. 23-011-X, "Sheep Statistics"

Table 49: Cattle and Calves on Alberta Farms, July 1, 1963-2008

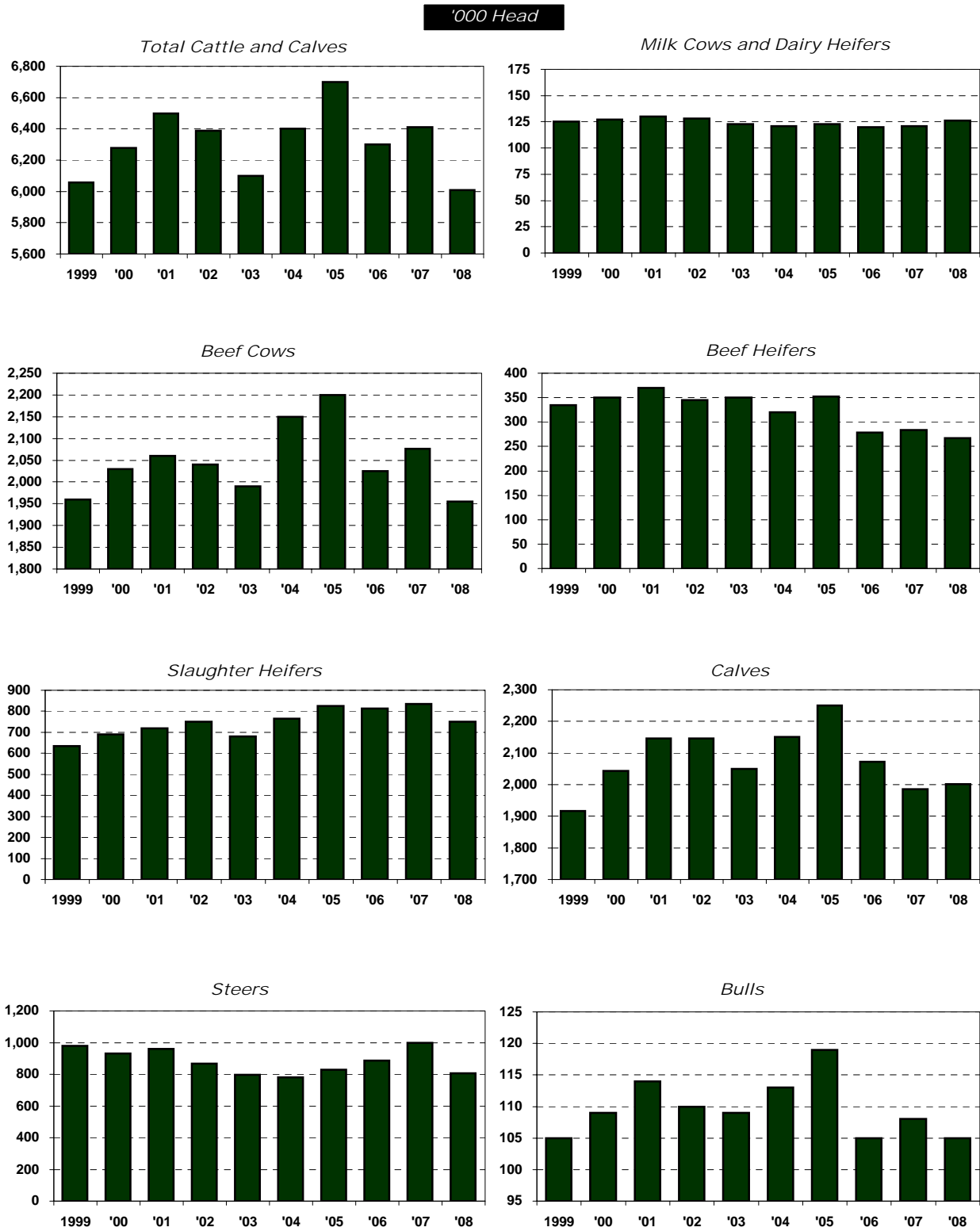
								Total		Alberta as a % of Canada	
	Bulls	Milk Cows	Dairy Heifers	Beef Cows	(1) Beef Heifers	Slaughter Heifers	Calves	Steers	Alberta		Canada
'000 Head											
1963.....	58.0	280.0	67.0	940.0	326.0	-	962.0	402.0	3,035.0	12,365.0	24.5
1964.....	63.0	279.0	61.0	1,018.0	401.0	-	1,018.0	480.0	3,320.0	12,994.0	25.6
1965.....	66.0	269.0	55.0	1,108.0	423.0	-	1,076.0	476.0	3,473.0	13,260.0	26.2
1966.....	64.0	243.0	51.0	1,119.0	362.0	-	1,080.0	521.0	3,440.0	12,878.8	26.7
1967.....	65.0	224.0	48.0	1,113.0	405.0	-	1,035.0	503.0	3,393.0	12,697.0	26.7
1968.....	62.0	208.0	44.0	1,098.0	381.0	-	1,018.0	530.0	3,341.0	12,487.0	26.8
1969.....	61.0	192.0	40.0	1,097.0	381.0	-	989.0	526.0	3,286.0	12,366.0	26.6
1970.....	65.0	195.0	38.0	1,170.0	430.0	-	1,070.0	525.0	3,493.0	12,826.0	27.2
1971.....	72.0	186.0	38.0	1,270.0	451.0	-	1,157.0	528.0	3,702.0	13,270.9	27.9
1972.....	75.0	178.0	32.0	1,364.0	500.0	-	1,225.0	550.0	3,924.0	13,736.0	28.6
1973.....	79.0	171.0	34.0	1,509.0	522.0	-	1,319.0	567.0	4,201.0	14,249.0	29.5
1974.....	87.0	165.0	35.0	1,660.0	559.0	-	1,434.0	655.0	4,595.0	15,318.0	30.0
1975.....	87.0	157.0	36.0	1,692.0	550.0	-	1,458.0	709.0	4,689.0	15,622.0	30.0
1976.....	88.0	163.0	51.0	1,530.0	270.0	368.0	1,435.0	770.0	4,675.0	15,063.0	31.0
1977.....	87.0	160.0	50.0	1,500.0	260.0	318.0	1,315.0	660.0	4,350.0	14,292.9	30.4
1978.....	82.0	158.0	51.0	1,400.0	240.0	320.0	1,239.0	645.0	4,135.0	13,352.7	31.0
1979.....	85.0	162.0	53.0	1,370.0	230.0	325.0	1,205.0	650.0	4,080.0	13,238.8	30.8
1980.....	90.0	168.0	56.0	1,400.0	245.0	306.0	1,290.0	600.0	4,155.0	13,381.9	31.0
1981.....	89.5	166.0	54.5	1,368.0	243.0	325.0	1,300.0	607.0	4,153.0	13,364.5	31.1
1982.....	90.0	159.0	50.0	1,394.0	227.0	320.0	1,260.0	580.0	4,080.0	13,170.0	31.0
1983.....	91.0	146.0	48.0	1,388.0	217.0	300.0	1,235.0	540.0	3,965.0	12,835.7	30.9
1984.....	91.0	141.0	49.0	1,368.0	233.0	298.0	1,255.0	540.0	3,975.0	12,581.9	31.6
1985.....	91.0	132.0	49.0	1,345.0	222.0	264.0	1,245.0	492.0	3,840.0	12,160.0	31.6
1986.....	91.0	124.0	51.0	1,315.0	232.0	255.0	1,252.0	426.0	3,746.0	11,787.7	31.8
1987.....	90.0	121.0	52.0	1,369.0	259.0	271.0	1,297.0	465.0	3,924.0	11,815.7	33.2
1988.....	91.0	117.0	50.0	1,444.0	283.0	287.0	1,351.0	526.0	4,149.0	12,153.2	34.1
1989.....	92.0	112.0	51.0	1,506.0	303.0	319.0	1,421.0	571.0	4,375.0	12,456.9	35.1
1990.....	94.0	109.0	49.0	1,567.0	305.0	320.0	1,478.0	568.0	4,490.0	12,560.2	35.7
1991.....	95.0	105.0	47.0	1,635.0	324.0	330.0	1,560.0	575.0	4,671.0	12,842.9	36.4
1992.....	97.0	105.0	47.0	1,667.0	335.0	348.0	1,581.0	631.0	4,811.0	13,025.1	36.9
1993.....	103.0	98.0	42.0	1,760.0	313.0	410.0	1,666.0	549.0	4,941.0	13,251.8	37.3
1994.....	112.0	100.0	43.0	1,917.0	400.0	359.0	1,818.0	567.0	5,316.0	13,924.4	38.2
1995.....	120.0	101.0	43.0	2,050.0	455.0	374.0	1,901.0	564.0	5,608.0	14,729.6	38.1
1996.....	119.0	103.0	44.0	2,023.0	390.0	459.0	1,945.0	653.0	5,736.0	15,051.4	38.1
1997.....	109.0	98.0	42.0	1,959.0	370.0	550.0	2,020.0	700.0	5,848.0	15,058.3	38.8
1998.....	104.0	92.0	39.0	1,920.0	330.0	625.0	2,035.0	900.0	6,045.0	14,944.4	40.4
1999.....	105.0	88.0	37.0	1,960.0	335.0	635.0	1,916.0	980.0	6,056.0	14,753.4	41.0
2000.....	109.0	89.0	38.0	2,030.0	350.0	690.0	2,043.0	930.0	6,279.0	14,968.4	41.9
2001.....	114.0	91.0	39.0	2,060.0	370.0	720.0	2,146.0	960.0	6,500.0	15,424.5	42.1
2002.....	110.0	90.0	38.0	2,040.0	345.0	750.0	2,146.0	868.0	6,387.0	15,420.9	41.4
2003.....	109.0	85.0	38.0	1,990.0	350.0	680.0	2,050.0	798.0	6,100.0	15,670.0	38.9
2004.....	113.0	82.0	39.0	2,150.0	320.0	765.0	2,151.0	780.0	6,400.0	16,610.0	38.5
2005.....	119.0	85.0	38.0	2,200.0	352.0	825.0	2,251.0	830.0	6,700.0	16,880.0	39.7
2006.....	105.0	82.0	38.0	2,025.0	278.0	812.0	2,072.0	888.0	6,300.0	16,000.0	39.4
2007.....	108.0	83.0	38.0	2,076.0	284.0	835.0	1,986.0	1,000.0	6,410.0	15,825.0	40.5
2008.....	105.0	86.0	40.0	1,955.0	267.0	750.0	2,002.0	805.0	6,010.0	15,195.0	39.6

Note: Cattle statistics prior to 1975 are as of June 1.

(1) Comprises heifers for beef herd replacement. Prior to 1976, included slaughter heifers.

Source: Statistics Canada Cat. No. 23-012-X, "Cattle Statistics"

Fig. 25 Number of Cattle and Calves on Alberta Farms, July 1, 1999-2008



Source: Statistics Canada Cat. No. 23-012-X, "Cattle Statistics"

Table 50: Pigs on Alberta Farms, July 1, 1965-2008

	Breeding Stock			All Other Pigs				Total		Alberta as a % of Canada
	Boars	Sows	Total	- 45 Lbs.	45-130 Lbs.	+130 Lbs.	Total	Alberta	Canada	
'000 Head										
1965.....	-	-	-	-	-	-	-	1,169.0	5,147.0	22.7
1966.....	-	-	-	-	-	-	-	1,092.7	5,401.3	20.2
1967.....	-	-	-	-	-	-	-	1,262.0	6,070.0	20.8
1968.....	-	-	-	-	-	-	-	1,266.0	5,771.0	21.9
1969.....	-	-	-	-	-	-	-	1,187.0	5,809.0	20.4
1970.....	-	-	-	-	-	-	-	1,532.0	7,113.0	21.5
1971.....	-	-	-	-	-	-	-	1,739.1	7,624.0	22.8
1972.....	-	-	-	-	-	-	-	1,510.0	6,995.0	21.6
1973.....	-	-	-	-	-	-	-	1,540.0	7,022.0	21.9
1974.....	-	-	-	-	-	-	-	1,375.0	6,564.0	20.9
1975.....	-	-	-	-	-	-	-	920.0	5,284.0	17.4
1976.....	7.6	86.5	94.1	321.8	257.5	206.5	785.8	879.9	5,855.2	15.0
1977.....	7.8	92.0	99.8	339.5	286.9	218.1	844.5	944.3	6,394.0	14.8
1978.....	8.1	96.8	104.9	365.7	296.1	193.3	855.1	960.0	7,373.7	13.0
1979.....	9.5	121.3	130.8	361.1	363.9	274.2	999.2	1,130.0	9,165.8	12.3
1980.....	9.6	125.8	135.4	401.6	393.1	320.9	1,115.6	1,251.0	10,090.5	12.4
1981.....	9.3	127.0	136.3	368.7	380.0	300.0	1,048.7	1,185.0	9,872.2	12.0
1982.....	9.0	125.0	134.0	377.0	370.0	299.0	1,046.0	1,180.0	9,702.5	12.2
1983.....	10.0	133.0	143.0	385.0	393.0	334.0	1,112.0	1,255.0	9,887.6	12.7
1984.....	11.0	155.0	166.0	435.0	464.0	405.0	1,304.0	1,470.0	10,272.5	14.3
1985.....	10.0	152.0	162.0	402.0	461.0	450.0	1,313.0	1,475.0	10,154.0	14.5
1986.....	11.0	159.0	170.0	444.0	472.0	422.0	1,338.0	1,508.0	9,891.3	15.2
1987.....	13.0	175.0	188.0	506.0	506.0	470.0	1,482.0	1,670.0	10,529.1	15.9
1988.....	13.0	184.0	197.0	530.0	562.0	518.0	1,610.0	1,807.0	11,038.3	16.4
1989.....	14.0	185.0	199.0	540.0	543.0	527.0	1,610.0	1,809.0	10,820.5	16.7
1990.....	13.0	176.0	189.0	505.0	505.0	490.0	1,500.0	1,689.0	10,146.3	16.6
1991.....	13.0	187.0	200.0	545.0	525.0	490.0	1,560.0	1,760.0	10,444.5	16.9
1992.....	14.1	198.9	213.0	560.2	606.5	533.4	1,700.1	1,913.1	10,803.0	17.7
1993.....	12.9	194.2	207.1	544.4	571.0	526.1	1,641.5	1,848.6	10,596.4	17.4
1994.....	13.5	196.6	210.1	533.1	536.5	498.9	1,568.5	1,778.6	10,728.1	16.6
1995.....	13.3	191.6	204.9	586.1	624.2	615.9	1,826.2	2,031.1	11,536.0	17.6
1996.....	12.0	178.5	190.5	538.0	591.7	555.7	1,685.4	1,875.9	11,547.6	16.2
1997.....	10.5	182.4	192.9	525.6	583.0	520.5	1,629.1	1,822.0	11,672.4	15.6
1998.....	9.9	181.2	191.1	526.7	631.8	531.3	1,689.8	1,880.9	12,357.1	15.2
1999.....	9.9	179.2	189.1	553.2	598.2	507.7	1,659.1	1,848.2	12,688.8	14.6
2000.....	9.7	185.7	195.4	561.8	647.0	514.0	1,722.8	1,918.2	13,401.0	14.3
2001.....	8.9	200.9	209.8	586.9	690.8	541.9	1,819.6	2,029.4	14,050.4	14.4
2002.....	7.9	209.0	216.9	621.9	711.5	590.6	1,924.0	2,140.9	14,715.0	14.5
2003.....	7.5	203.5	211.0	636.5	585.6	596.9	1,819.0	2,030.0	14,720.0	13.8
2004.....	7.3	198.0	205.3	622.7	623.3	578.7	1,824.7	2,030.0	14,980.0	13.6
2005.....	7.2	196.8	204.0	615.1	621.9	559.0	1,796.0	2,000.0	15,195.0	13.2
2006.....	7.1	188.0	195.1	614.4	676.4	570.1	1,860.9	2,056.0	15,065.0	13.6
2007.....	6.9	182.6	189.5	582.2	615.2	583.1	1,780.5	1,970.0	14,690.0	13.4
2008.....	6.0	165.0	171.0	504.8	488.8	505.4	1,499.0	1,670.0	12,980.0	12.9

Note: Pig statistics prior to 1975 are as of June 1.

Source: Statistics Canada Cat. No. 23-010-X, "Hog Statistics"

Table 51: Sheep and Lambs on Alberta Farms, July 1, 1965-2008

	Rams 1 Year Plus	Ewes and Wethers	Lambs, Breeding Under 1 Year	Lambs, Market Under 1 Year	Total		Alberta as a % of Canada
					Alberta	Canada	
<i>'000 Head</i>							
1965.....	-	-	-	-	355.0	1,132.0	31.4
1966.....	-	-	-	-	301.4	1,005.5	30.0
1967.....	-	-	-	-	260.0	922.0	28.2
1968.....	-	-	-	-	210.0	829.2	25.3
1969.....	-	-	-	-	180.0	796.0	22.6
1970.....	-	-	-	-	199.0	796.0	25.0
1971.....	-	-	-	-	244.9	851.3	28.8
1972.....	-	-	-	-	259.0	845.0	30.7
1973.....	-	-	-	-	255.0	832.5	30.6
1974.....	-	-	-	-	250.0	783.5	31.9
1975.....	-	-	-	-	226.0	702.6	32.2
1976.....	-	-	-	-	183.0	577.2	31.7
1977.....	-	-	-	-	146.5	558.6	26.2
1978.....	-	-	-	-	142.5	587.2	24.3
1979.....	-	-	-	-	153.5	648.7	23.7
1980.....	-	-	-	-	178.0	733.8	24.3
1981.....	-	-	-	-	198.0	803.2	24.7
1982.....	-	-	-	-	203.0	811.9	25.0
1983.....	-	-	-	-	202.0	802.9	25.2
1984.....	4.5	85.5	-	-	188.0	768.8	24.5
1985.....	4.1	75.9	-	-	175.0	720.3	24.3
1986.....	3.9	79.0	17.8	82.9	183.6	694.9	26.4
1987.....	4.3	89.0	21.0	88.7	203.0	731.3	27.8
1988.....	4.6	97.0	23.0	106.4	231.0	788.9	29.3
1989.....	5.0	110.0	26.0	110.0	251.0	827.5	30.3
1990.....	5.6	120.0	28.0	121.4	275.0	874.4	31.5
1991.....	6.0	135.0	32.0	126.0	299.0	917.8	32.6
1992.....	7.6	143.5	36.9	123.0	311.0	897.1	34.7
1993.....	6.0	135.2	27.6	118.2	287.0	883.0	32.5
1994.....	6.3	116.0	29.6	98.1	250.0	825.6	30.3
1995.....	5.7	124.7	31.4	102.2	264.0	857.6	30.8
1996.....	6.0	115.3	30.7	92.5	244.5	846.7	28.9
1997.....	5.8	109.5	28.7	81.7	225.7	821.5	27.5
1998.....	5.9	109.1	26.7	83.3	225.0	892.0	25.2
1999.....	6.5	111.0	30.0	92.5	240.0	979.0	24.5
2000.....	6.6	118.2	35.9	109.3	270.0	1,105.3	24.4
2001.....	7.0	128.8	30.4	120.8	287.0	1,247.7	23.0
2002.....	7.5	132.4	29.1	119.0	288.0	1,252.1	23.0
2003.....	6.7	119.0	27.8	101.5	255.0	1,247.2	20.4
2004.....	5.1	101.5	19.3	122.1	248.0	1,240.5	20.0
2005.....	5.3	103.5	19.0	111.2	239.0	1,190.5	20.1
2006.....	5.2	103.6	16.0	103.2	228.0	1,151.2	19.8
2007.....	4.8	92.0	15.8	92.4	205.0	1,095.7	18.7
2008.....	4.0	88.2	11.5	81.3	185.0	1,062.0	17.4

Note: Sheep statistics prior to 1975 are as of June 1.

Source: Statistics Canada Cat. No. 23-011-X, "Sheep Statistics"

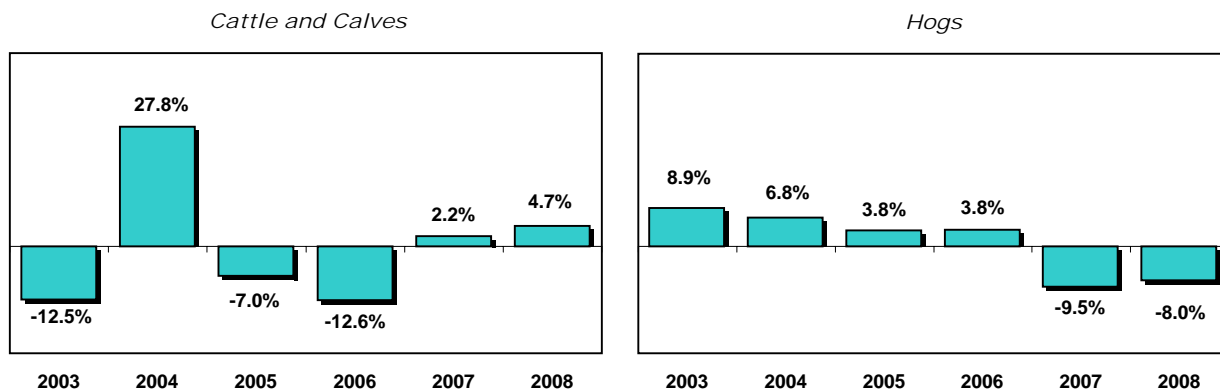
Table 52: Livestock Slaughtered (1), Canada and Provinces, 2001-2008

	Canada	Alberta	British Columbia, Saskatchewan and Manitoba	Ontario	Quebec and Atlantic Provinces	
Cattle and Calves - Head						
2001.....	3,693,240	2,342,002	211,512	699,416	440,310	
2002.....	3,749,650	2,367,910	225,919	707,981	447,840	
2003.....	3,435,781	2,071,455	200,487	729,137	434,702	
2004.....	4,334,220	2,648,341	275,492	863,668	546,719	
2005r.....	4,276,373	2,462,980	382,829	852,604	577,960	
2006r.....	3,864,555	2,151,879	326,531	844,066	542,079	
2007r.....	3,795,498	2,200,258	264,220	763,817	567,203	
2008p.....	3,775,970	2,303,493	281,960	724,753	465,764	
	Canada	Alberta	Saskatchewan and Manitoba	British Columbia	Ontario	Quebec and Atlantic Provinces
Hogs - Head						
2001.....	20,541,855	2,218,087	5,187,826	451,171	4,256,837	8,427,934
2002.....	21,978,971	2,587,197	5,555,179	504,683	4,620,615	8,711,297
2003.....	22,288,130	2,818,608	5,502,803	512,474	4,757,630	8,696,615
2004.....	22,701,314	3,008,995	5,505,254	521,714	4,664,010	9,001,341
2005r.....	22,158,939	3,122,270	5,393,054	503,404	4,602,168	8,538,043
2006r.....	21,619,564	3,241,863	5,137,169	488,843	4,513,639	8,238,050
2007r.....	21,078,382	2,934,702	4,745,023	494,884	4,799,704	8,104,069
2008p.....	21,520,329	2,701,366	4,854,146	525,014	5,122,047	8,317,756
	Canada	Western Canada	Ontario	Quebec and Atlantic Provinces		
Sheep and Lambs - Head						
2001.....	421,962	82,861	217,333	121,768		
2002.....	464,726	91,381	242,340	131,005		
2003.....	508,614	98,143	268,689	141,782		
2004.....	541,664	116,627	301,050	123,987		
2005.....	582,085	109,601	308,282	164,202		
2006.....	548,258	99,670	286,005	162,583		
2007r.....	540,657	111,655	269,189	159,813		
2008p.....	535,070	113,779	276,277	145,014		

(1) Data represent livestock slaughtered in federally and provincially inspected plants, irrespective of origin.

Source: Agriculture and Agri-Food Canada

Fig. 26 Slaughter Activity in Alberta, Annual Per Cent Change, 2003-2008



Source: Agriculture and Agri-Food Canada

Table 53: Livestock Slaughtered in Alberta (1), 1998-2008

		Steers	Heifers	Cows	Bulls	Total Cattle	Calves	Total Cattle and Calves	Hogs
		<i>Head</i>							
1998.....		1,111,853	800,052	189,294	8,878	2,113,768	401	2,114,169	1,596,267
1999.....		1,214,464	902,976	184,135	12,091	2,322,085	222	2,322,307	2,135,335
2000.....		1,246,491	885,050	194,593	7,346	2,334,592	311	2,334,903	2,091,472
2001.....		1,232,796	887,062	217,408	4,180	2,341,749	253	2,342,002	2,218,087
2002.....		1,223,119	909,351	231,917	3,207	2,367,580	330	2,367,910	2,587,197
2003.....		1,152,896	809,113	125,930	3,818	2,067,125	4,330	2,071,455	2,818,608
2004.....		1,331,105	1,061,256	202,670	16,637	2,644,632	3,709	2,648,341	3,008,995
2005.....		1,293,679	1,011,486	144,591	11,393	2,459,587	3,393	2,462,980	3,122,016
2006	Jan.....	60,832	66,096	23,998	659	151,585	250	151,835	270,269
	Feb.....	61,558	72,960	24,481	633	159,632	279	159,911	267,022
	Mar.....	78,147	99,471	28,271	1,024	206,913	342	207,255	334,079
	Apr.....	77,663	60,293	20,607	828	159,391	262	159,653	260,035
	May.....	114,766	75,325	20,326	968	211,385	240	211,625	261,620
	Jun.....	108,068	58,693	18,198	973	185,932	275	186,207	326,198
	Jul.....	96,685	41,468	14,799	744	153,696	160	153,856	249,186
	Aug.....	123,219	66,137	22,340	1,993	213,689	167	213,856	237,394
	Sep.....	86,868	56,114	22,620	1,452	167,054	304	167,358	297,772
	Oct.....	77,201	63,524	26,250	1,533	168,508	230	168,738	230,939
	Nov.....	84,400	89,963	42,147	1,272	217,782	336	218,118	239,776
	Dec.....	63,438	57,894	30,771	1,051	153,154	247	153,401	267,573
	Annual (2).....	1,032,845	807,938	294,808	13,130	2,148,721	3,092	2,151,813	3,241,863
2007r	Jan.....	89,393	78,154	41,785	803	210,135	214	210,349	230,497
	Feb.....	70,338	72,982	32,122	880	176,322	206	176,528	228,510
	Mar.....	58,930	76,970	28,528	1,143	165,571	753	166,324	296,697
	Apr.....	66,064	67,491	22,235	1,200	156,990	524	157,514	228,911
	May.....	112,650	65,384	30,870	1,539	210,443	482	210,925	223,262
	Jun.....	111,544	47,656	25,169	1,352	185,721	218	185,939	259,610
	Jul.....	94,868	45,251	21,019	1,058	162,196	204	162,400	221,048
	Aug.....	132,142	58,966	30,465	1,567	223,140	227	223,367	223,678
	Sep.....	90,362	57,338	28,404	1,244	177,348	376	177,724	286,627
	Oct.....	86,850	87,509	34,692	876	209,927	42	209,969	239,214
	Nov.....	62,799	71,965	33,954	544	169,262	116	169,378	225,725
	Dec.....	67,189	52,699	33,271	440	153,599	195	153,794	270,923
	Annual (2).....	1,043,129	782,365	362,514	12,646	2,200,654	3,557	2,204,211	2,934,702
2008p	Jan.....	83,522	65,573	48,909	441	198,445	8	198,453	204,741
	Feb.....	65,200	65,048	39,871	165	170,284	0	170,284	227,791
	Mar.....	59,716	70,135	33,362	230	163,443	1	163,444	278,594
	Apr.....	93,231	92,143	30,836	370	216,580	4	216,584	230,931
	May.....	97,681	57,576	25,345	252	180,854	0	180,854	204,759
	Jun.....	113,642	53,655	25,122	181	192,600	1	192,601	228,047
	Jul.....	131,613	54,210	29,425	224	215,472	5	215,477	189,591
	Aug.....	97,378	48,045	26,627	146	172,196	3	172,199	185,157
	Sep.....	89,224	58,614	30,548	365	178,751	27	178,778	237,319
	Oct.....	85,908	86,146	39,701	787	212,542	36	212,578	205,848
	Nov.....	71,183	71,176	42,484	503	185,346	53	185,399	222,941
	Dec.....	96,920	59,556	42,810	770	200,056	26	200,082	285,647
	Annual (2).....	1,085,218	781,877	415,040	4,434	2,286,569	164	2,286,733	2,701,366

(1) Data represents livestock slaughtered in federally and provincially inspected plants in Alberta, irrespective of origin.

(2) Cattle by class type: monthly data do not add up to totals as revisions are unavailable.

Source: "Red Meat Market Information", Agriculture and Agri-Food Canada; and Canadian Beef Grading Agency

Fig. 27 Number of Cattle Slaughtered (Excluding Calves), Alberta as a Per Cent of Canada, 2001-2008

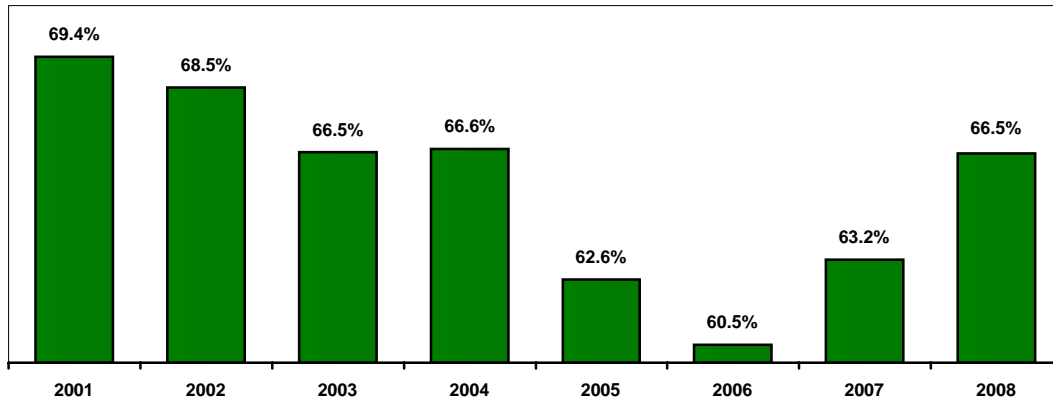
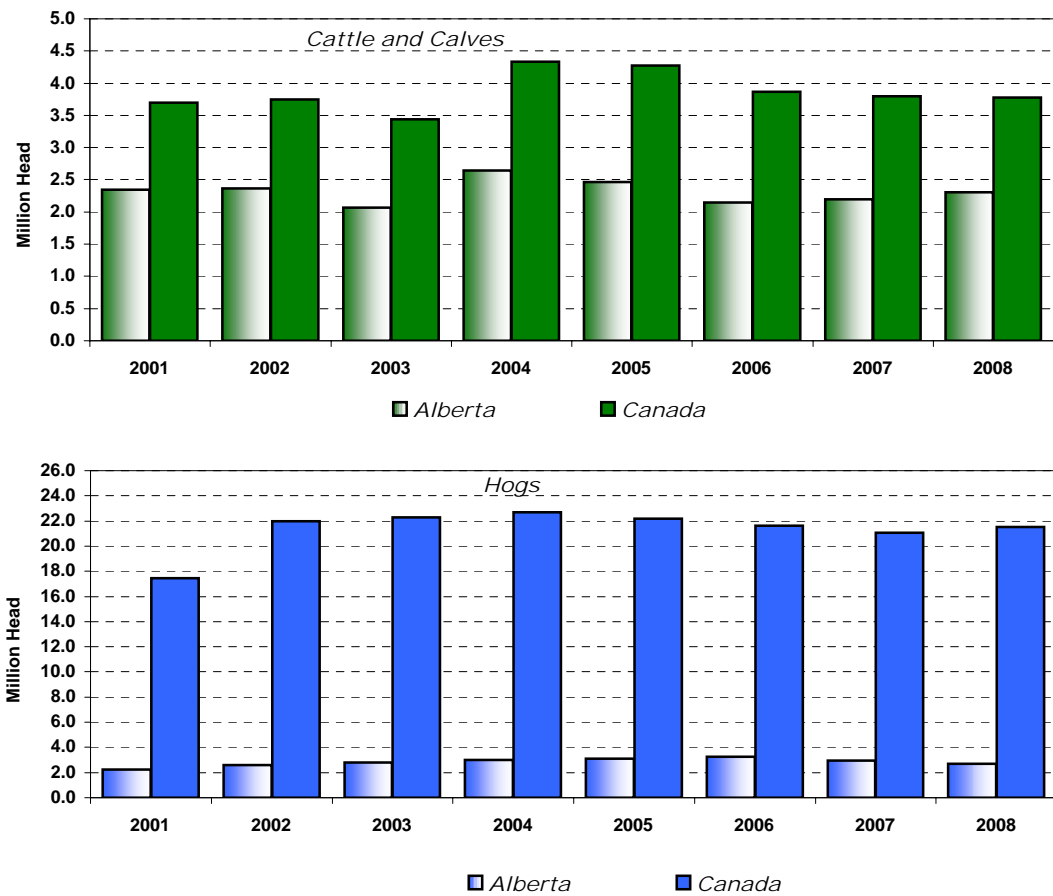


Fig. 28 Cattle and Calves and Hogs Slaughtered in Alberta and Canada, 2001-2008



Note: Data represents livestock slaughtered in federally and provincially inspected plants in Alberta, irrespective of origin.
 Source: "Red Meat Market Information", Agriculture and Agri-Food Canada; and Canadian Beef Grading Agency

Table 54: Summary of Alberta Slaughter Hog Marketings (1), 1999-2008

	Head		Head
1999.....	2,677,053	2004.....	3,468,657
2000.....	2,953,509	2005.....	3,574,185
2001.....	3,016,333	2006.....	3,704,335
2002.....	2,933,187	2007.....	3,340,017
2003.....	3,494,660	2008.....	3,033,480

(1) Data represents slaughter in federally and provincially inspected plants by province of origin.

Source: "Red Meat Market Information", Agriculture and Agri-Food Canada

Table 55: Alberta Supply and Disposition Livestock Balance Sheet, 2006-2008

July 1 to June 30	Cattle and Calves			Pigs			Sheep and Lambs		
	2006	2007r	2008p	2006	2007r	2008p	2006	2007r	2008p
	'000 Head								
Beginning Inventory at									
July 1 (previous year).....	6,700.0	6,300.0	6,410.0	2,000.0	2,056.0	1,970.0	239.0	228.0	205.0
Births (1).....	1,820.5	1,963.3	1,832.4	4,106.2	3,918.3	3,573.7	163.0	145.3	132.2
Interprovincial Imports (2).....	969.4	1,151.4	855.5	75.8	70.6	68.1	0.0	0.0	0.0
International Imports.....	0.0	0.2	0.3	0.4	0.1	0.2	3.1	16.0	28.4
Total Supply.....	9,489.9	9,414.9	9,098.2	6,182.4	6,045.0	5,612.0	405.1	389.3	365.6
Interprovincial Exports (2).....	155.7	162.1	171.2	20.0	20.0	20.0	29.8	42.7	38.4
International Exports.....	498.2	550.2	583.3	603.3	595.1	614.6	0.1	0.0	0.0
Total Slaughter (3).....	2,147.0	2,017.8	2,069.5	3,294.9	3,254.2	3,123.3	122.5	115.5	119.3
Deaths (4).....	389.0	274.8	264.2	208.2	205.7	184.1	24.7	26.1	22.9
Total Disposition.....	3,189.9	3,004.9	3,088.2	4,126.4	4,075.0	3,942.0	177.1	184.3	180.6
Ending Inventory at									
June 30 (current year).....	6,300.0	6,410.0	6,010.0	2,056.0	1,970.0	1,670.0	228.0	205.0	185.0

Note: Ending Inventory is derived by subtracting Total Disposition from Total Supply.

(1) Birth estimates for pigs have been adjusted for peri-natal mortality.

(2) Interprovincial imports and exports of feeder animals only. This number reflects net interprovincial movements in the case of sheep and lambs.

(3) Animals slaughtered in federally and provincially inspected plants (adjusted for interprovincial movements) and farm slaughter.

(4) Deaths include on-farm mortality and condemnations at slaughter.

Source: Agriculture Division, Statistics Canada

Table 56: Alberta Direct to Packer Sales (1), 1998-2008

	Steers - Live Sales		Heifers - Live Sales		Steers - Railgrade		Heifers - Railgrade	
	No. Sold	\$/100 Lbs.	No. Sold	\$/100 Lbs.	No. Sold	\$/100 Lbs.	No. Sold	\$/100 Lbs.
1998.....	536,635	83.81	244,132	84.44	83,610	140.94	29,321	142.25
1999.....	498,088	89.75	211,600	90.15	84,930	150.79	50,386	151.40
2000.....	500,723	95.27	210,500	95.88	106,976	159.42	58,644	160.02
2001.....	519,424	102.99	211,879	103.36	92,865	171.32	59,970	171.94
2002.....	529,805	98.75	251,341	98.89	150,263	163.98	73,344	163.84
2003.....	444,210	84.34	214,766	84.73	42,957	142.41	30,623	150.17
2004.....	483,086	78.34	306,932	78.51	154,565	129.94	97,371	131.47
2005.....	613,665	85.34	294,968	85.40	210,340	141.97	133,918	140.86
2006								
Jan.....	35,947	95.21	20,671	95.65	11,393	158.84	11,304	158.98
Feb.....	41,330	89.20	33,293	88.65	8,789	147.87	5,156	147.60
Mar.....	48,899	87.50	40,666	87.54	15,277	145.17	7,956	145.62
Apr.....	37,041	85.06	22,661	85.02	24,953	142.11	4,313	141.94
May.....	46,744	84.68	26,936	84.85	19,663	140.79	7,352	141.18
Jun.....	63,778	86.61	26,097	86.81	21,760	143.95	6,759	143.70
Jul.....	44,859	85.68	18,480	85.77	12,371	142.28	4,012	142.92
Aug.....	53,310	84.98	15,043	84.76	9,709	140.07	7,820	140.21
Sep.....	52,344	86.03	28,872	85.86	14,113	141.75	6,424	142.30
Oct.....	43,312	85.73	27,796	85.84	8,577	141.74	5,999	142.25
Nov.....	41,053	85.00	25,785	85.42	10,148	140.76	5,091	141.68
Dec.....	30,939	85.04	13,211	84.94	7,580	141.51	3,111	141.18
Annual.....	539,556	86.76	299,511	86.79	164,333	143.93	75,297	144.17
2007								
Jan.....	43,389	87.61	21,687	87.48	14,062	146.53	5,419	146.24
Feb.....	37,242	88.89	32,033	87.76	12,287	148.20	6,543	148.24
Mar.....	40,758	96.33	35,500	95.59	13,387	161.05	5,139	160.95
Apr.....	24,529	101.47	21,997	100.59	8,619	170.36	8,340	151.81
May.....	40,412	100.79	20,136	100.52	13,774	168.33	4,969	167.66
Jun.....	49,310	89.56	23,150	89.30	27,377	149.59	5,356	149.28
Jul.....	51,800	84.34	23,030	84.13	12,140	140.93	1,552	140.44
Aug.....	49,467	86.21	18,362	85.44	18,208	143.61	4,713	144.10
Sep.....	59,744	84.78	30,789	84.76	13,229	141.91	1,355	143.01
Oct.....	32,785	79.31	26,539	79.61	9,509	133.19	3,893	133.15
Nov.....	34,005	76.26	23,350	76.35	6,467	127.85	2,420	126.64
Dec.....	37,837	84.60	18,867	84.56	12,869	141.54	2,264	141.42
Annual.....	501,278	88.38	295,440	88.05	161,928	147.81	51,963	146.41
2008								
Jan.....	47,048	81.34	16,098	82.01	5,545	137.81	1,778	138.02
Feb.....	35,435	82.23	19,305	81.68	9,018	137.82	3,532	137.39
Mar.....	35,160	85.28	21,812	84.29	23,872	142.64	5,238	142.10
Apr.....	25,835	86.57	13,827	86.12	27,494	144.40	6,993	144.30
May.....	36,242	91.19	15,071	90.65	23,353	152.21	7,864	152.29
Jun.....	66,924	90.18	19,907	89.78	16,982	150.25	7,224	150.47
Jul.....	53,217	96.05	16,232	95.16	12,495	160.19	7,349	160.18
Aug.....	50,714	95.76	10,276	95.01	10,610	159.79	6,166	159.72
Sep.....	57,739	93.62	22,324	93.10	11,573	156.47	9,122	156.63
Oct.....	24,887	92.15	21,346	91.87	12,028	154.27	11,789	154.59
Nov.....	29,909	95.62	18,376	95.02	11,829	159.94	11,162	160.09
Dec.....	53,869	89.34	19,307	89.16	14,480	149.88	6,269	149.60
Annual.....	516,979	89.92	213,881	89.46	179,279	150.41	84,486	150.38

(1) Weighted average prices.

Source: "Red Meat Market Information", Agriculture and Agri-Food Canada

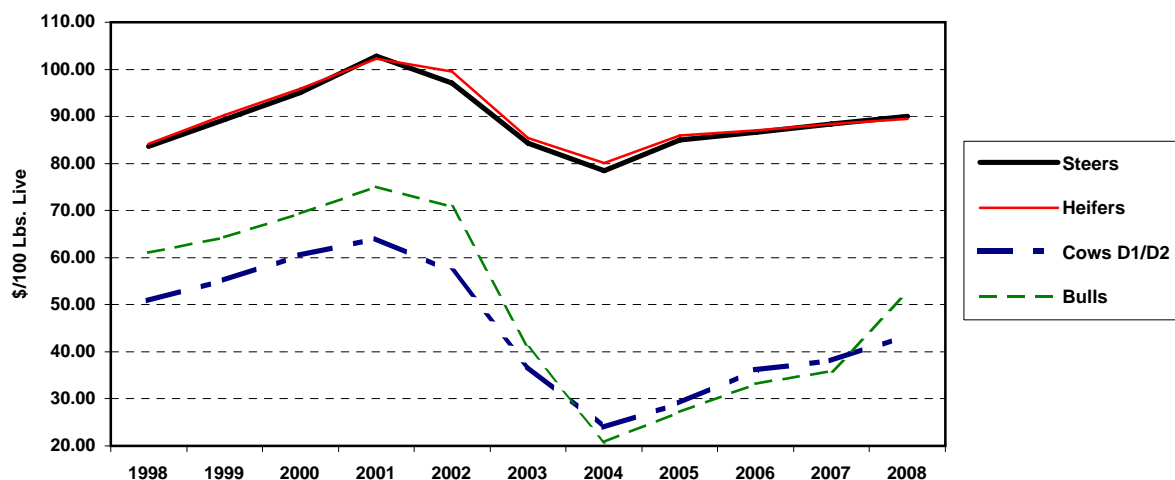
Table 57: Alberta Slaughter Cattle Prices, 1998-2008

	Slaughter Steers (1)	Slaughter Heifers (1)	Cows D1/D2	Cows D3	Feeder Cows	Bulls
\$/100 Lbs. Live						
1998.....	83.56	84.17	50.91	45.45	53.29	61.07
1999.....	89.30	90.34	55.26	48.21	58.38	64.29
2000.....	95.00	95.90	60.47	53.83	63.37	69.40
2001.....	102.82	102.29	63.99	56.42	66.20	75.03
2002.....	97.14	99.58	57.04	50.88	59.08	70.67
2003.....	84.28	85.35	37.04	29.44	45.84	40.85
2004.....	78.40	80.11	23.89	17.48	26.61	20.76
2005.....	84.98	85.87	29.13	22.36	32.40	27.17
2006.....	86.66	86.98	36.13	28.74	38.30	33.13
2007.....	88.32	88.34	38.06	31.14	39.37	35.85
2008 Jan.....	81.27	81.54	32.00	26.27	32.78	34.40
Feb.....	83.42	82.84	38.45	31.47	40.12	43.06
Mar.....	85.29	84.32	43.23	36.22	45.42	49.22
Apr.....	87.93	87.48	47.04	39.73	48.67	51.18
May.....	90.86	90.62	46.28	38.61	47.55	53.65
Jun.....	90.18	89.41	44.99	37.84	46.72	54.49
Jul.....	95.55	95.09	51.81	44.51	54.55	60.91
Aug.....	96.71	95.51	51.39	42.84	51.64	64.08
Sep.....	93.42	92.72	47.29	40.31	48.24	59.53
Oct.....	93.36	92.64	43.61	37.60	44.43	56.88
Nov.....	95.16	94.69	38.81	32.89	43.50	51.54
Dec.....	87.69	86.79	37.85	32.45	41.16	48.99
Annual.....	88.57	88.44	43.56	36.73	45.40	52.33

(1) Weighted average of weekly prices.

Source: Canfax

Fig. 29 Alberta Slaughter Cattle Prices, 1998-2008



Source: Canfax

Table 58: Average Feeder Cattle Prices (1), Edmonton, 1996-2008

	Feeder Steers				Feeder Heifers			
	+900 Lbs.	800 to 900 Lbs.	700 to 800 Lbs.	600 to 700 Lbs.	+800 Lbs.	700 to 800 Lbs.	600 to 700 Lbs.	500 to 600 Lbs.
	\$/100 Lbs. Live				\$/100 Lbs. Live			
1996.....	73.53	74.89	75.84	77.07	68.12	69.29	69.00	69.58
1997.....	89.35	95.71	99.53	104.36	87.56	91.57	94.32	97.42
1998.....	90.80	98.56	104.39	111.37	90.80	97.95	103.31	109.18
1999.....	96.52	104.48	110.60	119.43	95.22	103.88	110.87	118.47
2000.....	109.61	119.61	128.15	139.78	109.90	122.26	131.06	142.90
2001.....	115.15	124.98	133.42	143.28	118.73	127.45	135.27	145.05
2002.....	105.14	111.57	116.79	123.54	106.91	111.17	115.85	122.15
2003.....	98.36	103.78	108.91	115.68	98.84	103.14	108.73	115.71
2004.....	80.21	83.93	88.95	95.53	78.14	81.24	84.74	88.35
2005.....	98.87	104.78	110.75	117.73	97.44	101.23	105.70	110.99
2006								
Jan.....	112.29	115.41	119.29	129.10	109.12	112.60	118.17	126.56
Feb.....	100.54	105.26	113.24	125.56	101.91	107.53	115.77	124.95
Mar.....	94.71	101.30	111.33	123.34	95.47	102.91	111.67	120.78
Apr.....	89.27	98.23	109.55	122.90	92.12	101.26	112.09	119.26
May.....	92.96	102.34	111.89	121.89	96.00	104.02	110.90	117.19
Jun.....	103.52	109.98	118.20	127.76	105.42	111.42	117.68	123.07
Jul.....	107.63	114.43	120.17	127.85	108.45	113.76	117.70	122.25
Aug.....	107.41	114.50	121.88	127.12	107.36	112.88	117.50	122.12
Sep.....	107.79	114.65	120.63	124.46	107.57	111.40	115.26	119.69
Oct.....	101.23	107.53	111.51	115.63	102.58	103.85	105.76	112.96
Nov.....	93.87	97.81	101.20	105.67	91.05	92.98	96.18	104.40
Dec.....	91.67	94.88	97.62	102.08	87.97	89.49	92.56	99.88
Annual.....	100.24	106.36	113.04	121.11	100.42	105.34	110.94	117.76
2007								
Jan.....	90.22	93.09	96.05	101.28	87.06	89.04	89.04	98.96
Feb.....	94.40	96.66	101.23	109.08	90.37	93.14	98.00	103.05
Mar.....	96.40	100.35	105.58	115.32	93.48	96.41	101.30	106.86
Apr.....	96.43	101.20	110.05	118.37	95.21	99.35	104.90	109.98
May.....	96.27	103.28	111.83	121.52	94.89	101.02	106.82	111.89
Jun.....	92.73	99.35	108.93	118.39	93.54	100.49	107.57	111.68
Jul.....	92.43	100.15	106.27	113.11	91.64	97.78	104.90	107.96
Aug.....	99.83	105.38	108.81	112.34	96.74	100.35	103.02	105.70
Sep.....	96.33	101.94	106.16	109.20	94.48	96.34	97.86	100.10
Oct.....	88.85	92.15	94.38	96.33	84.04	84.75	85.13	87.61
Nov.....	82.53	85.63	88.05	93.18	78.31	78.94	81.42	86.57
Dec.....	88.10	87.96	90.71	95.51	81.37	82.27	84.51	89.32
Annual.....	92.88	97.26	102.34	108.64	90.09	93.32	97.04	101.64
2008								
Jan.....	80.77	82.51	84.49	89.70	75.24	76.15	77.94	82.40
Feb.....	81.69	83.70	87.26	95.47	76.96	79.04	83.07	87.35
Mar.....	80.98	83.43	88.68	97.63	78.26	80.26	83.42	88.43
Apr.....	81.40	84.94	91.31	98.67	79.34	81.99	85.43	88.67
May.....	86.58	93.30	99.11	103.85	85.16	87.50	90.80	93.45
Jun.....	91.37	96.51	102.46	105.79	88.28	91.05	94.01	96.74
Jul.....	96.22	99.61	103.57	106.99	92.89	94.68	96.67	98.55
Aug.....	99.89	102.54	105.01	106.75	96.55	97.96	98.61	99.85
Sep.....	96.10	100.09	103.10	103.77	92.13	92.88	93.21	94.44
Oct.....	92.05	94.66	97.33	99.47	87.98	86.70	87.51	89.08
Nov.....	92.28	95.11	97.82	100.46	85.82	86.53	88.72	90.77
Dec.....	88.06	90.50	92.54	97.05	80.59	81.11	83.57	86.11
Annual.....	88.95	92.24	96.06	100.47	84.93	86.32	88.58	91.32

(1) Simple average prices.

Source: Canfax

Table 59: Average Feeder Cattle Prices (1), Southern Alberta, 1996-2008

	Feeder Steers				Feeder Heifers			
	+900 Lbs.	800 to 900 Lbs.	700 to 800 Lbs.	600 to 700 Lbs.	+800 Lbs.	700 to 800 Lbs.	600 to 700 Lbs.	500 to 600 Lbs.
	\$/100 Lbs. Live				\$/100 Lbs. Live			
1996.....	73.10	76.04	76.91	77.20	67.93	72.49	71.60	71.24
1997.....	88.48	96.38	99.79	104.70	87.16	94.51	98.27	100.06
1998.....	89.57	98.83	105.01	112.31	90.84	100.14	105.58	110.37
1999.....	96.51	106.39	111.81	121.11	97.09	107.50	114.60	121.65
2000.....	108.89	121.03	129.13	140.85	109.91	123.72	132.72	144.52
2001.....	115.65	126.60	134.80	145.22	120.14	128.74	136.54	145.28
2002.....	105.84	112.01	117.43	124.70	108.63	113.14	118.38	124.55
2003.....	100.16	106.08	112.79	119.57	102.51	104.83	111.27	118.78
2004.....	79.29	83.26	87.36	92.81	77.48	80.20	83.82	88.05
2005.....	98.83	105.22	110.94	118.13	99.43	102.96	107.77	113.23
2006								
Jan.....	109.91	116.73	121.32	127.55	110.51	115.97	119.37	124.28
Feb.....	102.28	108.62	115.42	126.78	102.62	109.47	116.66	126.33
Mar.....	95.59	102.02	111.95	125.45	96.46	104.37	113.94	120.22
Apr.....	91.26	99.13	111.77	125.01	94.95	100.19	110.15	117.98
May.....	92.57	100.69	110.64	123.47	95.73	102.07	110.34	117.46
Jun.....	103.39	109.66	114.93	124.35	104.42	109.80	113.96	121.12
Jul.....	109.94	115.06	120.53	126.21	106.75	111.77	117.44	122.02
Aug.....	108.31	115.96	122.42	125.95	109.80	114.64	117.74	124.54
Sep.....	108.38	116.04	123.90	127.17	108.80	113.58	117.94	123.93
Oct.....	102.94	109.27	112.77	118.55	102.73	104.87	109.86	116.71
Nov.....	94.78	98.95	102.13	107.45	93.06	94.77	99.79	105.77
Dec.....	90.08	93.84	96.43	101.10	87.87	90.47	93.93	99.08
Annual.....	100.79	107.16	113.68	121.59	101.14	106.00	111.76	118.29
2007								
Jan.....	88.42	92.67	96.33	100.52	87.24	89.79	93.66	98.55
Feb.....	91.97	96.82	101.97	107.13	89.64	93.10	97.20	103.39
Mar.....	95.52	100.00	105.69	115.13	96.46	97.86	101.95	107.41
Apr.....	95.82	101.71	107.95	118.02	96.83	100.51	106.16	111.16
May.....	96.99	103.56	113.50	124.08	97.93	103.25	109.04	112.72
Jun.....	94.15	101.82	113.38	121.87	95.32	101.14	105.62	111.24
Jul.....	96.08	104.58	109.90	114.63	91.88	96.56	102.65	107.04
Aug.....	102.26	106.52	112.17	117.90	100.14	103.16	107.32	111.72
Sep.....	97.73	103.09	107.61	111.19	96.02	98.60	101.22	104.26
Oct.....	89.76	92.53	94.75	97.79	86.63	86.98	87.75	90.24
Nov.....	81.92	85.19	88.18	92.59	79.86	80.18	82.16	86.72
Dec.....	86.41	89.55	91.92	97.34	83.82	84.01	86.10	90.62
Annual.....	93.09	98.17	103.61	109.85	91.81	94.60	98.40	102.92
2008								
Jan.....	76.51	80.06	84.38	89.00	73.27	76.01	77.80	80.89
Feb.....	81.54	84.38	87.46	93.89	77.82	79.74	83.13	87.69
Mar.....	79.86	83.39	87.91	95.60	79.86	81.27	84.08	87.18
Apr.....	81.45	85.56	91.70	100.15	81.10	82.10	85.32	88.88
May.....	88.03	92.12	98.12	104.48	84.42	86.18	89.38	92.61
Jun.....	89.42	94.33	99.77	104.83	87.25	90.68	92.91	94.79
Jul.....	96.53	101.01	104.77	105.78	93.78	97.71	98.17	101.92
Aug.....	101.23	104.75	106.70	109.50	97.35	99.66	101.82	103.95
Sep.....	97.99	101.26	103.63	105.55	94.08	94.68	95.89	98.33
Oct.....	91.82	95.63	97.34	100.46	90.31	90.32	90.42	91.81
Nov.....	94.55	95.69	99.30	103.27	89.24	89.63	90.58	92.11
Dec.....	91.45	90.04	94.69	98.21	86.00	85.97	87.15	88.55
Annual.....	89.20	92.35	96.31	100.89	86.21	87.83	89.72	92.39

(1) Simple average prices.

Source: Canfax

Table 60: Average Calf Prices (1), Edmonton, 1996-2008

	Feeder Steer Calves			Feeder Heifer Calves	
	500 to 600 Lbs.	400 to 500 Lbs.	Under 400 Lbs.	400 to 500 Lbs.	300 to 400 Lbs.
	\$/100 Lbs. Live			\$/100 Lbs. Live	
1996.....	78.48	79.58	80.23	70.05	70.37
1997.....	108.90	113.04	114.84	99.53	100.28
1998.....	118.54	126.99	130.94	114.95	117.90
1999.....	129.79	139.78	147.74	127.72	134.97
2000.....	153.04	171.58	189.76	159.09	174.75
2001.....	156.24	174.28	192.78	160.45	175.85
2002.....	131.97	144.04	152.10	131.02	137.99
2003.....	124.57	134.09	139.59	123.08	127.82
2004.....	100.89	105.67	108.64	92.13	95.18
2005.....	124.28	130.53	133.57	116.11	119.07
2006					
Jan.....	143.00	152.90	158.00	135.60	139.54
Feb.....	139.51	152.53	156.59	133.03	137.31
Mar.....	135.33	146.54	149.81	129.27	131.74
Apr.....	133.80	140.67	144.77	126.86	130.59
May.....	130.51	135.66	140.14	123.04	128.46
Jun.....	134.95	138.75	139.86	126.75	129.74
Jul.....	134.23	139.01	139.96	126.46	130.23
Aug.....	133.73	142.50	146.92	127.52	134.00
Sep.....	130.09	140.71	150.60	125.39	134.71
Oct.....	125.11	137.88	145.39	123.04	129.21
Nov.....	116.79	126.62	134.33	113.24	119.88
Dec.....	112.17	120.11	125.24	106.83	111.06
Annual.....	130.77	139.49	144.30	124.75	129.71
2007					
Jan.....	109.44	116.29	120.63	102.02	104.83
Feb.....	115.77	123.24	125.23	107.41	109.39
Mar.....	122.32	127.41	130.59	112.30	115.72
Apr.....	124.96	130.57	133.66	115.41	118.23
May.....	127.20	131.96	131.08	118.15	118.83
Jun.....	124.70	128.02	128.00	115.01	117.06
Jul.....	119.47	120.59	119.33	108.78	111.00
Aug.....	116.45	121.27	126.04	109.43	113.27
Sep.....	112.59	118.69	124.72	106.31	111.05
Oct.....	103.03	110.23	115.56	92.85	99.18
Nov.....	102.67	110.98	115.28	92.96	98.63
Dec.....	105.12	113.04	117.09	95.75	100.45
Annual.....	115.31	121.02	123.93	106.37	109.80
2008					
Jan.....	97.31	100.65	102.58	85.11	85.94
Feb.....	102.70	105.52	107.02	90.73	91.39
Mar.....	104.68	106.92	107.48	91.78	91.67
Apr.....	103.16	103.99	103.75	91.24	90.51
May.....	107.33	107.00	104.38	94.20	92.48
Jun.....	107.49	110.86	111.06	99.02	97.56
Jul.....	108.16	111.72	111.10	99.98	99.18
Aug.....	111.29	114.58	117.46	103.07	104.63
Sep.....	106.63	112.51	118.49	98.37	102.40
Oct.....	103.71	108.86	112.45	92.66	94.72
Nov.....	107.82	114.84	118.49	95.92	98.15
Dec.....	102.81	109.10	112.70	90.74	93.03
Annual.....	105.26	108.88	110.58	94.40	95.14

(1) Simple average prices.

Source: Canfax

Table 61: Average Calf Prices (1), Southern Alberta, 1996-2008

	Feeder Steer Calves			Feeder Heifer Calves	
	500 to 600 Lbs.	400 to 500 Lbs.	Under 400 Lbs.	400 to 500 Lbs.	300 to 400 Lbs.
	\$/100 Lbs. Live			\$/100 Lbs. Live	
1996.....	78.06	79.14	82.60	71.46	73.59
1997.....	109.17	114.07	114.59	101.70	98.60
1998.....	119.84	125.85	128.31	115.88	120.77
1999.....	130.22	137.90	145.04	128.40	135.42
2000.....	154.02	169.15	182.76	156.17	170.16
2001.....	157.88	170.32	185.07	156.59	169.21
2002.....	133.21	140.74	147.54	130.31	135.76
2003.....	127.25	133.74	140.49	124.72	128.66
2004.....	97.47	102.96	106.04	91.63	97.25
2005.....	124.47	130.16	134.30	118.90	121.74
2006					
Jan.....	136.20	142.52	148.59	130.90	134.17
Feb.....	138.70	146.32	150.53	134.02	138.15
Mar.....	136.20	142.02	145.45	128.03	129.68
Apr.....	133.66	136.82	142.38	124.16	129.91
May.....	131.47	136.35	142.29	124.52	128.72
Jun.....	131.89	132.79	144.50	125.70	133.25
Jul.....	131.34	135.13	141.38	126.13	129.88
Aug.....	133.48	139.75	148.45	129.70	136.83
Sep.....	134.13	143.20	152.23	130.29	138.67
Oct.....	125.72	139.30	146.15	123.78	129.25
Nov.....	115.75	129.14	135.51	113.29	119.74
Dec.....	109.28	118.35	121.92	105.43	109.30
Annual.....	129.82	136.81	143.28	124.66	129.80
2007					
Jan.....	108.20	113.70	115.41	103.94	107.64
Feb.....	112.70	119.01	122.03	106.16	110.41
Mar.....	121.88	124.62	126.94	112.22	115.64
Apr.....	122.85	127.73	131.38	114.78	118.68
May.....	139.29	131.08	132.31	116.85	123.22
Jun.....	127.00	127.53	128.08	113.36	116.54
Jul.....	122.63	-	-	-	-
Aug.....	121.10	123.91	127.71	116.24	119.81
Sep.....	115.59	122.46	126.15	110.16	115.16
Oct.....	103.90	112.79	116.77	96.12	101.59
Nov.....	100.91	108.48	113.71	92.49	96.78
Dec.....	104.86	111.25	115.00	95.95	100.73
Annual.....	116.74	120.23	123.23	107.12	111.47
2008					
Jan.....	95.30	96.20	97.33	84.11	88.81
Feb.....	99.37	103.42	106.21	90.74	92.15
Mar.....	102.20	105.07	102.89	91.17	89.96
Apr.....	104.21	105.41	104.11	89.75	89.59
May.....	108.09	110.24	108.11	94.24	94.02
Jun.....	107.56	109.23	108.33	94.03	94.77
Jul.....	109.03	108.56	109.55	102.41	102.90
Aug.....	111.06	113.46	118.96	106.77	108.25
Sep.....	106.96	112.38	117.78	103.34	107.19
Oct.....	103.88	108.29	111.28	95.49	96.96
Nov.....	107.97	114.56	116.87	95.33	97.77
Dec.....	104.71	111.18	115.84	94.08	95.60
Annual.....	105.03	108.17	109.77	95.12	96.50

(1) Simple average prices.

Source: Canfax

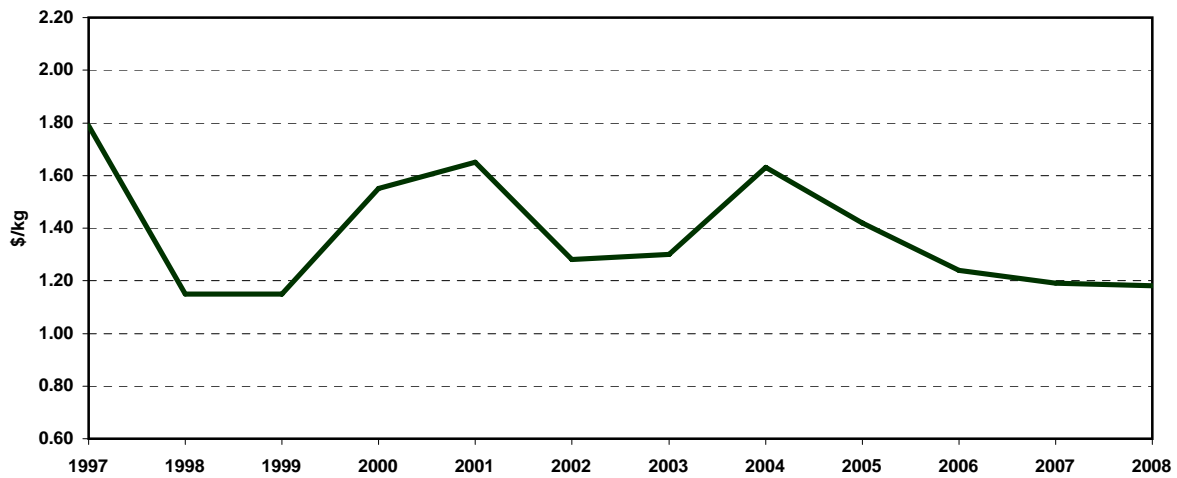
Table 62: Alberta Average Slaughter Hog Prices (Index 100), 1997-2008

	Annual Average Price	Monthly Average Price		
	\$/kg	2007		2008
		\$/kg		
1997.....	1.79	Jan.....	1.21	0.89
1998.....	1.15	Feb.....	1.33	1.01
1999.....	1.15	Mar.....	1.25	0.94
2000.....	1.55	Apr.....	1.28	1.09
2001.....	1.65	May.....	1.37	1.33
2002.....	1.28	Jun.....	1.35	1.26
2003.....	1.30	Jul.....	1.27	1.31
2004.....	1.63	Aug.....	1.28	1.50
2005.....	1.42	Sep.....	1.13	1.31
2006.....	1.24	Oct.....	0.97	1.31
2007.....	1.19	Nov.....	0.84	1.13
2008.....	1.18	Dec.....	0.92	1.13

Note: Weighted average prices up until 1998.

Source: Alberta Agriculture and Rural Development, Statistics and Data Development Branch

Fig. 30 Alberta Average Slaughter Hog Prices (Index 100), 1997-2008



Source: Alberta Agriculture and Rural Development, Statistics and Data Development Branch

Table 63: Central Alberta Average Market Lamb Prices (95-115 Lbs.) (1),
1997-2008

	Annual Average Price	Monthly Average Price	
	\$/100 Lbs.	2007	2008
		\$/100 Lbs.	
1997.....	108.11	Jan.....	116.16 112.80
1998.....	94.52	Feb.....	116.40 117.00
1999.....	93.88	Mar.....	115.20 117.60
2000.....	99.40	Apr.....	111.60 121.92
2001.....	86.89	May.....	118.08 126.60
2002.....	88.40	Jun.....	120.00 127.80
2003.....	89.95	Jul.....	120.00 124.80
2004.....	83.18	Aug.....	120.00 112.80
2005.....	109.75	Sep.....	120.00 117.00
2006.....	123.37	Oct.....	118.08 117.60
2007.....	116.86	Nov.....	112.80 117.60
2008.....	119.23	Dec.....	112.80 117.60

Note: Plant price converted to live weight equivalent.

(1) Simple average prices.

Source: Sunterra Meats; and Alberta Agriculture and Rural Development, Statistics and Data Development Branch

Table 64: Alberta Sheep and Lamb Marketings (1), 1997-2008

	Sheep	Lambs	Total Sheep and Lambs
	Head		
1997 (2).....	-	-	59,900
1998 (2).....	-	-	57,200
1999 (2).....	-	-	55,000
2000 (2).....	-	-	61,800
2001 (2).....	-	-	71,400
2002 (2).....	-	-	78,600
2003 (2).....	-	-	87,300
2004 (2).....	-	-	105,400
2005 (2).....	-	-	98,800
2006 (2).....	-	-	89,700
2007 (2).....	-	-	98,200
2008 (2).....	-	-	94,700

(1) These data represent sheep and lambs of Alberta origin slaughtered in Alberta and other Canadian provinces.

(2) Estimate from Alberta's sheep and lamb balance sheets.

Source: Statistics Canada

Table 65: Alberta Brand Inspection Record of Live Cattle and Calf Shipments Out-of-Province (1), 2007 and 2008

	B.C.		Saskatchewan		Manitoba		Ontario		Quebec	
	2007	2008p	2007	2008p	2007	2008p	2007	2008p	2007	2008p
Head										
Feeders.....	12,609	17,240	61,449	48,498	6,563	7,021	55,503	44,802	18,777	10,767
Bulls.....	103	2,037	408	2,378	54	221	33	40	158	12
Cows.....	1,003	5,082	2,062	5,399	30	684	89	290	362	10
Heifers.....	1,205	3,414	12,385	14,851	692	1,130	3,820	6,479	637	364
Steers.....	2,413	3,304	8,035	7,016	1,676	2,054	11,158	14,485	5,423	5,096
Calves.....	2,084	403	20,930	8,207	3,581	1,431	28,175	16,211	4,833	2,721
Yearlings.....	5,801	3,000	17,629	10,647	530	1,501	12,228	7,297	7,364	2,564
Slaughter.....	1,687	15,053	14,906	36,761	7	9,125	7,099	1,278	5,426	3,031
Bulls.....	459	5252	6,930	7,020	6	2,905	406	4	2,601	244
Cows.....	727	9118	5,984	19,047	0	5,970	114	197	2,629	2,780
Heifers.....	124	181	1,091	2,632	0	161	323	500	39	2
Steers.....	228	202	655	7,908	1	86	5,037	103	1	5
Calves.....	9	38	0	61	0	0	331	463	6	0
Yearlings.....	140	262	246	93	0	3	888	11	150	0
Replacement.....	6,295	5,644	13,495	9,543	1,082	390	442	668	1,624	753
Bulls.....	435	423	1,094	842	68	59	20	19	44	28
Cows.....	3,463	3174	8,432	6,190	721	188	318	488	1,295	359
Heifers.....	615	973	1,155	1,022	65	87	88	69	268	362
Calves.....	1,782	1074	2,814	1,489	228	56	16	92	17	4
Yearlings.....	0	0	0	0	0	0	0	0	0	0
All Classes.....	20,591	37,937	89,850	94,802	7,652	16,536	63,044	46,748	25,827	14,551

	Maritimes		United States		Other		Total	
	2007	2008p	2007	2008p	2007	2008p	2007	2008p
Head								
Feeders.....	0	158	103,498	85,892	70	120	258,469	214,498
Bulls.....	0	0	17	234	0	13	773	4,935
Cows.....	0	0	28	411	0	0	3,574	11,876
Heifers.....	0	0	19,765	38,457	0	22	38,504	64,717
Steers.....	0	0	15,451	13,570	0	0	44,156	45,525
Calves.....	0	158	13,732	5,072	0	8	73,335	34,211
Yearlings.....	0	0	54,505	28,148	70	77	98,127	53,234
Slaughter.....	0	0	560,512	391,867	0	44	589,637	457,159
Bulls.....	0	0	446	5,668	0	2	10,848	21,095
Cows.....	0	0	459	7,175	0	40	9,913	44,327
Heifers.....	0	0	273,555	199,732	0	0	275,132	203,208
Steers.....	0	0	279,794	175,858	0	0	285,716	184,162
Calves.....	0	0	305	0	0	0	651	562
Yearlings.....	0	0	5,953	3,434	0	2	7,377	3,805
Replacement.....	3	177	430	1,110	278	228	23,649	18,513
Bulls.....	2	7	106	172	35	2	1,804	1,552
Cows.....	0	89	134	161	0	69	14,363	10,718
Heifers.....	0	1	166	636	243	102	2,600	3,252
Calves.....	1	80	24	141	0	55	4,882	2,991
Yearlings.....	0	0	0	0	0	0	0	0
All Classes.....	3	335	664,440	478,869	348	392	871,755	690,170

(1) Shipments exclude unclassified animals.

Source: Livestock Identification Services Ltd.

Table 66: Registrations and Sales of Registered Horses in Alberta, 1999-2008

	1999	2000	2001	2002	2003	2004	2005	2006	2007r	2008p
<i>Registration by Breed Association - Head</i>										
Arabian.....	391	394	375	467	283	246	257	241	258	229
Appaloosa.....	353	316	226	198	170	126	207	130	133	85
Morgan.....	200	306	290	295	250	225	248	253	218	161
Paint.....	1,843	1,824	1,489	1,382	1,095	1,075	855	916	873	862
Quarter Horse.....	5,753	6,265	6,287	6,516	6,162	6,133	5,836	6,342	5,269	5,856
Standardbred.....	334	424	324	272	298	309	360	401	377	322
Thoroughbred.....	533	480	490	478	498	492	558	550	487	451
Draft.....	284	261	247	307	250	201	228	190	180	232
Other (1).....	709	657	954	843	658	678	764	910	723	539
Warmblood (3).....	-	-	-	-	-	-	-	-	-	268
Total (4).....	10,400	10,927	10,682	10,758	9,664	9,485	9,313	9,933	8,518	9,005
<i>Ownership Transfers - Head</i>										
Arabian (2).....	470	539	392	433	268	293	328	279	311	232
Appaloosa.....	344	305	269	219	293	144	125	127	122	91
Morgan.....	363	383	387	439	388	332	320	238	282	200
Paint.....	-	-	-	-	-	-	-	-	-	-
Quarter Horse.....	5,495	5,959	5,984	5,971	5,736	5,431	5,506	5,533	5,450	5,517
Standardbred.....	-	-	-	-	-	-	-	-	-	-
Thoroughbred.....	-	-	-	-	-	-	-	-	-	-
Draft.....	359	262	281	306	250	192	226	328	189	226
Other (1).....	934	746	1,189	1,110	912	807	944	947	924	514
Warmblood (3).....	-	-	-	-	-	-	-	-	-	302
Total (4).....	7,965	8,194	8,502	8,478	7,847	7,199	7,449	7,452	7,278	7,082

(1) Other registrations and transfers include the addition of donkey data in 2001.

(2) Part breed transfers are not recorded (except when made at time of registration).

(3) Warmblood figures included in "Other" up to 2007.

(4) Transfer totals do not include Standardbreds, Thoroughbreds and Paints.

Source: Alberta Agriculture and Rural Development, Rural Extension and Industry Development Division, Livestock Business Development Branch; and Breed Registries

Table 67: Alberta Horse Meat Exports by Destination, 1999-2008 (1)

	1999	2000	2001	2002	2003	2004	2005	2006	2007	2008
<i>Quantity - tonnes</i>										
Europe.....	6,121	5,504	7,180	5,985	5,410	5,300	4,791	4,175	4,975	6,639
Japan.....	4,846	3,947	3,595	2,222	2,283	3,041	3,245	3,163	3,939	3,164
Mexico.....	0	376	380	352	1,409	1,507	1,667	1,454	796	173
Other Countries.....	0	40	89	26	24	15	61	0	28	15
Total.....	10,967	9,867	11,244	8,586	9,126	9,864	9,764	8,793	9,738	9,991
<i>Value - \$'000</i>										
Europe.....	39,075	33,828	47,421	37,998	31,307	31,366	28,488	25,880	28,805	34,949
Japan.....	19,347	17,192	17,095	12,952	11,347	13,825	16,752	15,817	16,803	16,926
Mexico.....	-	612	688	577	1,856	2,599	2,862	2,372	1,897	677
Other Countries.....	-	44	245	111	59	76	205	0	205	133
Total.....	58,422	51,677	65,450	51,639	44,568	47,866	48,307	44,069	47,711	52,685

(1) Refers to fresh or chilled and frozen meat and may include some meat of asses and mules.

Source: Statistics Canada; and Alberta Agriculture and Rural Development, Statistics and Data Development Branch

Table 68: Alberta Game Farming Industry, 1999-2008

	Licenced Game Farms	Farms With Elk	Elk on Farms	Farms With Deer	Whitetail Deer on Farms	Mule Deer on Farms	Reindeer on Farms
<i>Number</i>							
1999.....	513	377	25,914	168	6,499	319	159
2000.....	575	424	33,265	182	8,601	323	191
2001.....	601	451	42,021	181	11,057	391	251
2002.....	605	460	48,186	188	12,152	442	289
2003.....	602	453	45,963	172	9,663	408	317
2004.....	535	426	41,631	138	8,400	403	318
2005.....	505	391	36,495	123	8,033	299	310
2006.....	476	368	30,931	106	7,246	263	219
2007.....	414	319	27,047	81	5,543	112	156
2008p.....	406	312	22,992	77	4,584	99	139

Source: Alberta Agriculture and Rural Development, Regulatory Services Division, Inspection and Investigation Branch

Table 69: Alberta Dairy Industry, 2002-2008

	2002-03	2003-04	2004-05	2005-06	2006-07	2007-08p
<i>Dairy Year From August 1 to July 31</i>						
Number of Milk Producers.....	784	754	723	706	662	641
Number of Cream Producers.....	1	1	0	0	0	0
Milk Production ('000 litres).....	623,380	635,065	637,044	624,029	626,151	656,024
Cream Production (kg).....	3,304	2,744	0	0	0	0
Average Daily Shipment Per Milk Producer (litres).....	2,178	2,308	2,414	2,422	2,591	2,804
	2003r	2004r	2005r	2006	2007	2008p
<i>Calendar Year - \$'000</i>						
Farm Cash Receipts						
Dairy Products.....	384,704	382,979	398,675	382,095	426,818	459,317
Dairy Products - Manufacturing Activity						
Value of Manufacturing Sales.....	1,011,723	1,067,564	x	x	x	x
International Exports of Dairy Products						
Total.....	10,200	5,312	3,113	2,844	8,370	4,031
Cuba	-	-	1,924	792	-	1,871
Egypt.....	-	119	-	1,273	1,243	1,300
Asia (1).....	9,370	5,095	176	-	541	753
To Other Countries.....	830	98	1,013	780	6,586	107

Note: Use preliminary numbers (p) with caution.

(1) Asia countries including: Philippines, Hong Kong, Singapore, China, Indonesia, Japan, Taiwan, Thailand and Vietnam.

Source: Alberta Dairy Board; Alberta Milk; Statistics Canada; and Alberta Agriculture and Rural Development, Statistics and Data Development Branch

Table 70: Output and Value of Poultry Meats, Alberta, 1997-2008

	Total Production		Consumed by Producers		Sold	
	tonnes	\$'000	tonnes	\$'000	tonnes	\$'000
<i>Stewing Hen and Chicken</i>						
1997.....	67,518	107,257	591	938	66,927	106,319
1998.....	74,655	115,688	608	940	74,046	114,747
1999.....	79,748	114,646	608	874	79,140	113,772
2000.....	82,732	118,861	293	417	82,439	118,444
2001.....	86,906	133,015	323	509	86,583	132,506
2002.....	84,306	122,270	273	395	84,033	121,874
2003.....	82,097	124,493	265	402	81,832	124,090
2004.....	89,197	138,452	269	412	88,928	138,041
2005.....	87,494	141,955	268	427	87,226	141,529
2006.....	87,889	137,987	270	430	87,619	137,557
2007r.....	89,605	152,390	272	391	89,332	151,999
2008p.....	90,385	173,461	272	446	90,113	173,014
<i>Turkey</i>						
1997.....	11,754	21,803	38	71	11,716	21,732
1998.....	11,314	20,772	39	72	11,275	20,700
1999.....	11,694	20,695	39	69	11,655	20,626
2000.....	11,408	20,265	39	69	11,369	20,196
2001.....	13,127	23,790	38	69	13,089	23,721
2002.....	11,764	21,450	38	69	11,726	21,381
2003.....	13,191	24,242	34	62	13,157	24,180
2004.....	12,129	23,209	33	62	12,096	23,147
2005.....	13,118	24,034	33	61	13,085	23,973
2006r.....	13,325	23,887	34	61	13,291	23,826
2007r.....	14,091	28,074	35	69	14,056	28,005
2008p.....	16,318	36,387	35	77	16,283	36,310
<i>Total Stewing Hen, Chicken and Turkey</i>						
1997.....	79,272	129,060	629	1,009	78,643	128,051
1998.....	85,969	136,460	647	1,012	85,321	135,447
1999.....	91,442	135,341	647	943	90,795	134,398
2000.....	94,140	139,126	332	486	93,808	138,640
2001.....	100,033	156,805	361	578	99,672	156,227
2002.....	96,070	143,720	311	464	95,759	143,255
2003.....	96,069	148,735	310	464	94,989	143,256
2004.....	101,326	161,661	302	471	101,024	161,188
2005.....	100,612	165,989	301	488	100,311	165,502
2006.....	101,214	161,874	304	491	100,910	161,383
2007r.....	103,696	180,464	307	460	103,388	180,004
2008p.....	106,703	209,848	307	523	106,396	209,324

Source: Statistics Canada Cat. No. 23-015 XIB, "Poultry and Egg Statistics"

Table 71: Production, Disposition and Value of Eggs, Alberta, 1997-2008

	Production		Disposition						
	Average No. of Layers	Dozens	Sold (Includes Exports)				Leakers and Rejects	Producer Use for Consump.	Value
			For Consumption		For Hatching				
	'000	'000	'000 doz.	\$'000	'000 doz.	\$'000	'000 doz.	'000 doz.	\$'000
1997.....	1,952	40,369	33,570	35,467	5,546	16,392	785	468	494
1998.....	1,987	40,844	34,022	35,309	5,546	16,392	796	480	510
1999.....	1,998	40,735	33,927	35,223	5,546	16,392	794	468	525
2000.....	2,157	41,553	33,390	34,948	6,345	22,200	810	468	585
2001.....	2,244	43,608	35,658	38,213	6,607	23,613	851	492	625
2002.....	2,244	42,599	34,809	40,523	6,563	23,349	831	396	511
2003.....	2,235	43,178	35,445	41,006	6,493	23,544	844	396	508
2004.....	2,299	44,343	36,413	44,322	6,670	24,703	864	396	527
2005.....	2,346	45,769	37,836	41,438	6,646	24,308	891	396	488
2006.....	2,300	45,565	38,012	41,196	6,267	22,682	890	396	500
2007r.....	2,321	46,325	38,460	41,955	6,588	26,280	905	372	470
2008p Jan.....	2,298	4,138	3,512	3,956	514	2,064	81	31	41
Feb.....	2,286	3,844	3,249	3,719	489	2,049	75	31	41
Mar.....	2,288	4,064	3,417	4,035	537	2,250	79	31	41
Apr.....	2,315	3,965	3,269	3,922	588	2,505	77	31	41
May.....	2,344	4,102	3,411	4,126	580	2,469	80	31	41
Jun.....	2,350	3,999	3,330	4,029	560	2,395	78	31	41
Jul.....	2,353	4,119	3,446	4,223	562	2,404	80	31	42
Aug.....	2,366	4,115	3,444	4,275	560	2,449	80	31	43
Sep.....	2,370	4,002	3,313	4,136	580	2,533	78	31	42
Oct.....	2,319	4,010	3,380	4,215	521	2,275	78	31	42
Nov.....	2,284	3,934	3,265	3,947	561	2,451	77	31	41
Dec.....	2,273	4,069	3,502	4,231	457	1,995	79	31	41
Annual.....	2,321	48,359	40,538	48,814	6,507	27,839	942	372	497

Source: Statistics Canada Cat. No. 23-015 XIB, "Poultry and Egg Statistics"

Table 72: Chickens Slaughtered in Registered Stations, Alberta, 1996-2008

	Under 1 kg	1 to 2 kg	2 kg and Over	Total
	Eviscerated Weight - tonnes			
1996.....	613	59,597	1,869	62,079
1997.....	750	65,674	1,824	68,247
1998.....	325	70,344	1,563	72,232
1999.....	54	77,335	683	78,072
2000.....	30	79,542	302	79,874
2001.....	8	84,424	341	84,773
2002.....	7	81,680	561	82,248
2003.....	5	79,419	561	79,985
2004.....	8	93,018	57	93,083
2005.....	19	85,287	30	85,337
2006.....	33	84,853	70	84,956
2007r.....	41	86,975	48	87,063
2008p.....	36	86,111	33	86,181

Source: Agriculture and Agri-Food Canada