

Table No.

47	Livestock on Farms, Canada and Provinces, July 1, 1995-2006
48	Cattle and Calves on Alberta Farms, July 1, 1961-2006.....
49	Pigs on Alberta Farms, July 1, 1963-2006
50	Sheep and Lambs on Alberta Farms, July 1, 1963-2006.....
51	Livestock Slaughtered, Canada and Provinces, 1999-2006
52	Livestock Slaughtered in Alberta, 1996-2006
53	Summary of Alberta Slaughter Hog Marketings, 1997-2006.....
54	Alberta Supply and Disposition Livestock Balance Sheet, 2004-2006
55	Alberta Direct to Packer Sales, 1996-2006
56	Alberta Slaughter Cattle Prices, 1996-2006
57	Average Feeder Cattle Prices, Edmonton, 1994-2006
58	Average Feeder Cattle Prices, Southern Alberta, 1994-2006
59	Average Calf Prices, Edmonton, 1994-2006.....
60	Average Calf Prices, Southern Alberta, 1994-2006.....
61	Alberta Average Slaughter Hog Prices (Index 100), 1995-2006.....
62	Central Alberta Average Market Lamb Prices (95-115 lbs), 1995-2006.....
63	Alberta Sheep and Lamb Marketings, 1995-2006.....
64	Alberta Brand Inspection Record of Live Cattle and Calf Shipments Out-of-Province, 2005 and 2006.....
65	Registrations and Sales of Registered Horses in Alberta, 1997-2006.....
66	Alberta Horse Meat Exports by Destination, 1997-2006.....
67	Pregnant Mare Urine (PMU) Statistics, Alberta, 1989-90 to 2006-07.....
68	Alberta Dairy Industry, 2001-2006.....
69	Output and Value of Poultry Meats, Alberta, 1995-2006.....
70	Production, Disposition and Value of Eggs, Alberta, 1995-2006.....
71	Chickens Slaughtered in Registered Stations, Alberta, 1994-2006.....
72	Alberta Game Farming Industry, 1997-2006.....

Alberta Livestock Industry, 2006

Cattle and Calves

Alberta's cattle and calf herd decreased in 2006. Estimates, as of July 1, 2006, showed the total provincial herd falling 6.0 per cent to 6,300,000 head, from 6,700,000 head in 2005. Lower inventories were typical of most cattle classes. The exceptions were steers, which rose by 7.0 per cent to 888,000 head, and dairy heifers, which remained flat at 38,000 head. The lower inventories were largely the result of the re-opening of the United States border on July 18, 2005 to under thirty month (UTM) old cattle from Canada and the resumption of exports. The border had been closed since May 2003, following the discovery of bovine spongiform encephalopathy (BSE) on an Alberta farm.

Total beef cows and heifers were estimated at 2,303,000 head, down 9.8 per cent from 2005. When compared to a year earlier, there was an 8.0 per cent drop in beef cow numbers to 2,025,000 head, while beef heifer numbers fell 21.0 per cent to 278,000 head. Slaughter heifer numbers dropped to 812,000 head or 1.6 per cent below the previous year's record of 825,000 head. The provincial dairy herd, comprised of cows and heifers, decreased 2.4 per cent to 120,000 head, from 123,000 a year ago.

Compared to other Canadian provinces, Alberta (as of July 1, 2006), continued to be the lead province in cattle and calf inventories (6,300,000 head). Next was Saskatchewan (3,450,000 head), followed by Ontario (2,032,600 head) and Manitoba (1,680,000 head). Alberta accounted for more than one-half (51.4 per cent) of the total estimated western Canadian herd of 12,250,000 head, and 39.4 per cent of the national total of 16,000,000 head.

Preliminary data pegged Alberta's annual total cattle slaughter (excluding calves) in federally and provincially inspected plants at 2,148,719 head in 2006, a 12.6 per cent decrease from 2005. Steers and heifers made up the bulk of the slaughter, and together accounted for 85.7 per cent of cattle slaughtered. Total cow slaughter increased significantly to 294,908 head, up 103.9 per cent from the 2005 slaughter level of 144,591 head. The overall slaughter decline was partially attributed to the resumption of under thirty-month old live cattle exports to the United States in July 2005.

Nationally, the 2006 data showed cattle slaughter (excluding calves) in federally and provincially inspected plants at 3,548,983 head, with Alberta accounting for 60.5 per cent of the national total. Alberta contributed 86.9 per cent to the western Canadian kill of 2,472,415 head.

Annual prices for all classes of slaughter cattle in 2006 were above corresponding 2005 levels and showed continued recovery from the price collapse after the discovery of BSE in May 2003. The 2006 Alberta annual average slaughter steer price increased 2.0 per cent to \$86.66 per cwt., while the price for slaughter heifers rose 1.3 per cent to \$86.98 per cwt. Average slaughter bull price strengthened to \$33.13 per cwt. or 21.9 per cent of the 2005 level.

Total Alberta live cattle and calf shipments in 2006, as per brand inspection records, increased 64.6 per cent from a year earlier to 810,476 head, largely a result of the partial resumption of live cattle exports to the United States in July 2005. These shipments consisted of feeders, slaughter animals, and breeding herd replacements.

Live feeder cattle and calf shipments to all destinations in 2006 totaled 189,226 head, 30.3 per cent more than 2005. A total of 143,636 head was shipped to other provinces, with the remainder exported to the United States. The largest volume was shipped to Saskatchewan.

Total shipments of cattle and calves for slaughter increased 84.5 per cent in 2006 to 598,954 head, from 324,692 head in 2005. Of this, 91.7 per cent were shipped to the United States, compared to 70.0 per cent in 2005.

Shipments of live replacement cattle and calves fell marginally by 0.4 per cent in 2006 to 22,296 head, from 22,377 head a year earlier. All live replacement cattle and calf exports in 2006 were shipped to other provinces, with the exception of one animal that was exported to the United States.

Pigs

As of July 1, 2006, the estimated number of pigs on farms in Alberta was 2,056,000 head, up 2.8 per cent from 2,000,000 head in 2005. The market hog inventory rose to 1,860,900 head, up 3.6 per cent from 1,796,000 head a year earlier. Alberta's breeding stock inventory of boars, sows, and bred gilts fell 4.4 per cent to 195,100 head (204,000 head in 2005). Boar numbers fell to 7,100 head from 7,200 head a year earlier, due to increased usage of artificial insemination. Among provinces, Alberta continued to rank fourth in pig inventories, behind Quebec (4,250,000 head), Ontario (3,929,600 head), and Manitoba (2,980,000 head). For western Canada, the size of the pig herd as of July 1, 2006 was 6,560,000 head, with Alberta accounting for 31.3 per cent. Alberta also accounted for 13.6 per cent of the national pig inventory of 15,065,000 head.

In 2006, Alberta hog slaughter in federally and provincially inspected plants climbed to a fifth consecutive record high of 3,241,863 head, up 3.8 per cent from 2005. As well, slaughter hog marketings (or hogs of Alberta origin slaughtered in Canada) increased to a second consecutive record of 3,704,335 head, up 3.6 per cent from 2005. Due to the strong marketings in 2006, the average Alberta index 100 hog price declined 14.4 per cent to \$1.25 per kilogram, from \$1.46 per kilogram in 2005.

Sheep and Lambs

Estimates of sheep and lamb inventories as of July 1, 2006 showed the size of the provincial flock falling to 228,000 head, down 4.6 per cent from a year earlier. The decline was partially fuelled by higher market lamb prices, which resulted in higher marketings. Among provinces, Alberta ranked third in sheep and lamb inventories after Ontario (311,000 head), and Quebec (307,000 head). The size of the western Canadian flock was 492,000 head as of July 1 2006, with Alberta accounting for 46.3 per cent. Nationally, there were 1,151,200 sheep and lambs on farms as of July 1, 2006, with Alberta contributing 19.8 per cent.

Apiculture

Preliminary estimates indicate that the number of beekeepers in Alberta decreased marginally in 2006. The total number was estimated at 725, down 0.4 per cent from 728 in 2005. As well, the number of colonies declined marginally in 2006 to 250,000, from 251,000 a year ago. The average honey price in 2005 was \$2.17 per kilogram, a 34.6 per cent drop from 2004.

Total Alberta honey production in 2006 was 17,015 tonnes, up 17.6 per cent from 14,463 tonnes in 2005. Nationally, total honey production in 2006 was 43,045 tonnes, up 19.2 per cent from 36,119 tonnes in 2005. Alberta accounted for 39.5 per cent of the national total in 2006, practically unchanged from 40.0 per cent in 2005. In 2006, the average colony in Alberta produced an estimated 68 kilograms of honey, up 17.2 per cent from 58 kilograms in 2005.

Table 47: Livestock on Farms, Canada and Provinces, July 1, 1995-2006

	Canada	Alberta	Sask.	Manitoba	British Columbia	Ontario	Quebec	Atlantic Provinces
Cattle and Calves - '000 Head								
1995.....	14,729.6	5,608.0	2,838.0	1,342.0	846.0	2,295.0	1,469.0	331.6
1996.....	15,051.4	5,736.0	2,907.0	1,424.0	867.0	2,299.0	1,486.0	332.4
1997.....	15,058.3	5,848.0	2,834.0	1,449.0	835.0	2,294.0	1,466.0	332.3
1998.....	14,944.4	6,045.0	2,747.0	1,447.0	790.0	2,204.0	1,386.5	324.9
1999.....	14,753.4	6,056.0	2,719.0	1,400.0	800.0	2,120.0	1,343.0	315.4
2000.....	14,968.4	6,279.0	2,750.0	1,400.0	805.0	2,097.0	1,335.0	302.4
2001.....	15,424.5	6,500.0	2,900.0	1,425.0	815.0	2,130.0	1,360.0	294.5
2002r.....	15,420.9	6,387.0	2,940.0	1,470.0	836.5	2,125.0	1,370.0	292.4
2003r.....	15,670.0	6,100.0	3,220.0	1,590.0	885.0	2,160.9	1,420.0	294.1
2004r.....	16,610.0	6,400.0	3,540.0	1,730.0	950.0	2,180.3	1,515.0	294.7
2005r.....	16,880.0	6,700.0	3,625.0	1,735.0	915.0	2,154.6	1,455.0	295.4
2006.....	16,000.0	6,300.0	3,450.0	1,680.0	820.0	2,032.6	1,425.0	292.4
Pigs - '000 Head								
1995.....	11,536.0	2,031.1	868.0	1,666.7	184.8	3,092.6	3,366.3	326.5
1996.....	11,547.6	1,875.9	829.3	1,813.7	175.5	3,065.7	3,455.0	332.5
1997.....	11,672.4	1,822.0	862.0	1,809.5	171.0	3,123.9	3,542.5	341.5
1998.....	12,357.1	1,880.9	930.8	1,998.6	177.1	3,331.0	3,662.5	376.2
1999.....	12,688.8	1,848.2	917.8	2,044.0	173.7	3,381.3	3,949.3	374.5
2000.....	13,401.0	1,918.2	1,028.4	2,295.5	167.9	3,515.9	4,095.1	380.0
2001.....	14,050.4	2,029.4	1,129.1	2,556.0	168.3	3,476.2	4,294.4	397.0
2002r.....	14,715.0	2,140.9	1,230.4	2,785.0	168.0	3,655.9	4,353.1	381.7
2003r.....	14,720.0	2,030.0	1,250.0	2,850.0	160.0	3,714.5	4,350.0	365.5
2004r.....	14,980.0	2,030.0	1,350.0	2,890.0	155.0	3,849.4	4,350.0	355.6
2005r.....	15,195.0	2,000.0	1,395.0	2,940.0	144.0	3,995.4	4,384.0	336.6
2006.....	15,065.0	2,056.0	1,389.0	2,980.0	135.0	3,929.6	4,250.0	325.4
Sheep and Lambs - '000 Head								
1995.....	857.6	264.0	78.2	34.5	83.0	227.0	127.0	43.9
1996.....	846.7	244.5	86.0	37.5	77.3	219.9	138.0	43.5
1997.....	821.5	225.7	73.8	42.1	68.5	226.4	141.3	43.7
1998.....	892.0	225.0	89.0	50.0	75.0	249.0	159.7	44.3
1999.....	979.0	240.0	98.0	60.0	73.0	275.0	185.6	47.4
2000.....	1,105.3	270.0	123.0	69.0	72.0	312.0	212.6	46.7
2001.....	1,247.7	287.0	149.0	84.0	85.0	340.0	256.0	46.7
2002r.....	1,252.1	288.0	155.0	78.0	70.0	335.0	279.0	47.1
2003r.....	1,247.2	255.0	145.0	82.0	73.0	353.0	292.0	47.2
2004r.....	1,240.5	248.0	160.0	82.0	75.0	340.0	290.0	45.5
2005r.....	1,190.5	239.0	142.0	78.0	76.0	310.0	302.0	43.5
2006.....	1,151.2	228.0	133.0	68.5	62.5	311.0	307.0	41.2

Source: Agriculture Division, Statistics Canada

Table 48: Cattle and Calves on Alberta Farms, July 1, 1961-2006

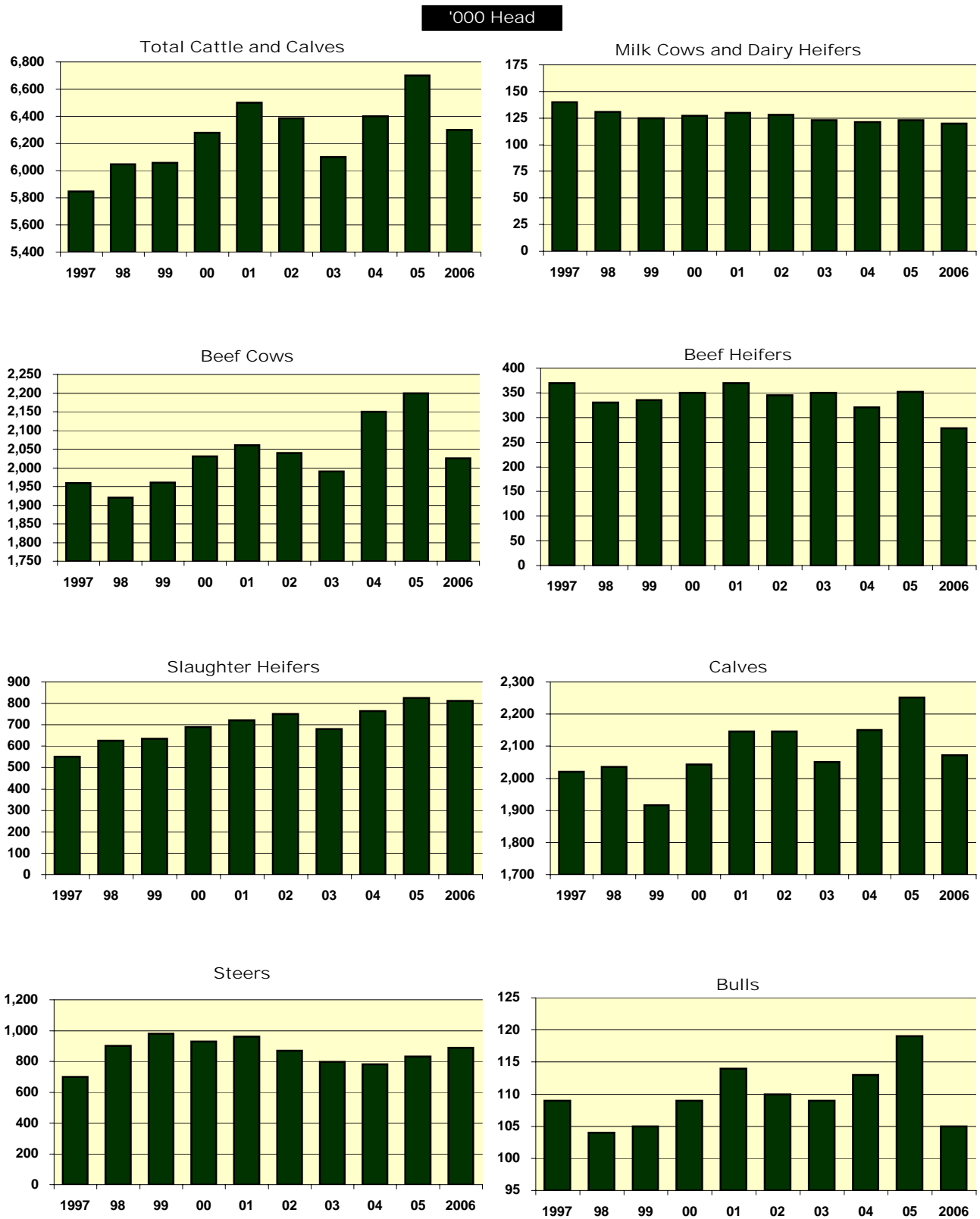
									Total		Alberta as a % of Canada
	Bulls	Milk Cows	Dairy Heifers	Beef Cows	(1) Beef Heifers	Slaughter Heifers	Calves	Steers	Alberta	Canada	
	'000 Head										
1961.....	57.0	288.0	69.0	890.0	271.0	-	913.0	392.0	2,879.0	11,933.8	24.1
1962.....	57.0	282.0	67.0	910.0	278.0	-	925.0	380.0	2,899.0	12,067.0	24.0
1963.....	58.0	280.0	67.0	940.0	326.0	-	962.0	402.0	3,035.0	12,365.0	24.5
1964.....	63.0	279.0	61.0	1,018.0	401.0	-	1,018.0	480.0	3,320.0	12,994.0	25.6
1965.....	66.0	269.0	55.0	1,108.0	423.0	-	1,076.0	476.0	3,473.0	13,260.0	26.2
1966.....	64.0	243.0	51.0	1,119.0	362.0	-	1,080.0	521.0	3,440.0	12,878.8	26.7
1967.....	65.0	224.0	48.0	1,113.0	405.0	-	1,035.0	503.0	3,393.0	12,697.0	26.7
1968.....	62.0	208.0	44.0	1,098.0	381.0	-	1,018.0	530.0	3,341.0	12,487.0	26.8
1969.....	61.0	192.0	40.0	1,097.0	381.0	-	989.0	526.0	3,286.0	12,366.0	26.6
1970.....	65.0	195.0	38.0	1,170.0	430.0	-	1,070.0	525.0	3,493.0	12,826.0	27.2
1971.....	72.0	186.0	38.0	1,270.0	451.0	-	1,157.0	528.0	3,702.0	13,270.9	27.9
1972.....	75.0	178.0	32.0	1,364.0	500.0	-	1,225.0	550.0	3,924.0	13,736.0	28.6
1973.....	79.0	171.0	34.0	1,509.0	522.0	-	1,319.0	567.0	4,201.0	14,249.0	29.5
1974.....	87.0	165.0	35.0	1,660.0	559.0	-	1,434.0	655.0	4,595.0	15,318.0	30.0
1975.....	87.0	157.0	36.0	1,692.0	550.0	-	1,458.0	709.0	4,689.0	15,622.0	30.0
1976.....	88.0	163.0	51.0	1,530.0	270.0	368.0	1,435.0	770.0	4,675.0	15,063.0	31.0
1977.....	87.0	160.0	50.0	1,500.0	260.0	318.0	1,315.0	660.0	4,350.0	14,292.9	30.4
1978.....	82.0	158.0	51.0	1,400.0	240.0	320.0	1,239.0	645.0	4,135.0	13,352.7	31.0
1979.....	85.0	162.0	53.0	1,370.0	230.0	325.0	1,205.0	650.0	4,080.0	13,238.8	30.8
1980.....	90.0	168.0	56.0	1,400.0	245.0	306.0	1,290.0	600.0	4,155.0	13,381.9	31.0
1981.....	89.5	166.0	54.5	1,368.0	243.0	325.0	1,300.0	607.0	4,153.0	13,364.5	31.1
1982.....	90.0	159.0	50.0	1,394.0	227.0	320.0	1,260.0	580.0	4,080.0	13,170.0	31.0
1983.....	91.0	146.0	48.0	1,388.0	217.0	300.0	1,235.0	540.0	3,965.0	12,835.7	30.9
1984.....	91.0	141.0	49.0	1,368.0	233.0	298.0	1,255.0	540.0	3,975.0	12,581.9	31.6
1985.....	91.0	132.0	49.0	1,345.0	222.0	264.0	1,245.0	492.0	3,840.0	12,160.0	31.6
1986.....	91.0	124.0	51.0	1,315.0	232.0	255.0	1,252.0	426.0	3,746.0	11,787.7	31.8
1987.....	90.0	121.0	52.0	1,369.0	259.0	271.0	1,297.0	465.0	3,924.0	11,815.7	33.2
1988.....	91.0	117.0	50.0	1,444.0	283.0	287.0	1,351.0	526.0	4,149.0	12,153.2	34.1
1989.....	92.0	112.0	51.0	1,506.0	303.0	319.0	1,421.0	571.0	4,375.0	12,456.9	35.1
1990.....	94.0	109.0	49.0	1,567.0	305.0	320.0	1,478.0	568.0	4,490.0	12,560.2	35.7
1991.....	95.0	105.0	47.0	1,635.0	324.0	330.0	1,560.0	575.0	4,671.0	12,842.9	36.4
1992.....	97.0	105.0	47.0	1,667.0	335.0	348.0	1,581.0	631.0	4,811.0	13,025.1	36.9
1993.....	103.0	98.0	42.0	1,760.0	313.0	410.0	1,666.0	549.0	4,941.0	13,251.8	37.3
1994.....	112.0	100.0	43.0	1,917.0	400.0	359.0	1,818.0	567.0	5,316.0	13,924.4	38.2
1995.....	120.0	101.0	43.0	2,050.0	455.0	374.0	1,901.0	564.0	5,608.0	14,729.6	38.1
1996.....	119.0	103.0	44.0	2,023.0	390.0	459.0	1,945.0	653.0	5,736.0	15,051.4	38.1
1997.....	109.0	98.0	42.0	1,959.0	370.0	550.0	2,020.0	700.0	5,848.0	15,058.3	38.8
1998.....	104.0	92.0	39.0	1,920.0	330.0	625.0	2,035.0	900.0	6,045.0	14,944.4	40.4
1999.....	105.0	88.0	37.0	1,960.0	335.0	635.0	1,916.0	980.0	6,056.0	14,753.4	41.0
2000.....	109.0	89.0	38.0	2,030.0	350.0	690.0	2,043.0	930.0	6,279.0	14,968.4	41.9
2001.....	114.0	91.0	39.0	2,060.0	370.0	720.0	2,146.0	960.0	6,500.0	15,424.5	42.1
2002.....	110.0	90.0	38.0	2,040.0	345.0	750.0	2,146.0	868.0	6,387.0	15,420.9	41.4
2003.....	109.0	85.0	38.0	1,990.0	350.0	680.0	2,050.0	798.0	6,100.0	15,670.0	38.9
2004.....	113.0	82.0	39.0	2,150.0	320.0	765.0	2,151.0	780.0	6,400.0	16,610.0	38.5
2005.....	119.0	85.0	38.0	2,200.0	352.0	825.0	2,251.0	830.0	6,700.0	16,880.0	39.7
2006.....	105.0	82.0	38.0	2,025.0	278.0	812.0	2,072.0	888.0	6,300.0	16,000.0	39.4

Note: Cattle statistics prior to 1975 are as of June 1.

(1) Comprises heifers for beef herd replacement. Prior to 1976, included slaughter heifers.

Source: Agriculture Division, Statistics Canada

Fig. 25 Number of Cattle and Calves on Alberta Farms, July 1, 1997-2006



Source: Agriculture Division, Statistics Canada

Table 49: Pigs on Alberta Farms, July 1, 1963-2006

	Breeding Stock			All Other Pigs				Total		Alberta as a % of Canada
	Boars	Sows	Total	- 45 lbs	45-130 Lbs	+130 lbs	Total	Alberta	Canada	
'000 Head										
1963.....	-	-	-	-	-	-	-	1,113.0	5,211.0	21.4
1964.....	-	-	-	-	-	-	-	1,302.0	5,667.0	23.0
1965.....	-	-	-	-	-	-	-	1,169.0	5,147.0	22.7
1966.....	-	-	-	-	-	-	-	1,092.7	5,401.3	20.2
1967.....	-	-	-	-	-	-	-	1,262.0	6,070.0	20.8
1968.....	-	-	-	-	-	-	-	1,266.0	5,771.0	21.9
1969.....	-	-	-	-	-	-	-	1,187.0	5,809.0	20.4
1970.....	-	-	-	-	-	-	-	1,532.0	7,113.0	21.5
1971.....	-	-	-	-	-	-	-	1,739.1	7,624.0	22.8
1972.....	-	-	-	-	-	-	-	1,510.0	6,995.0	21.6
1973.....	-	-	-	-	-	-	-	1,540.0	7,022.0	21.9
1974.....	-	-	-	-	-	-	-	1,375.0	6,564.0	20.9
1975.....	-	-	-	-	-	-	-	920.0	5,284.0	17.4
1976.....	7.6	86.5	94.1	321.8	257.5	206.5	785.8	879.9	5,855.2	15.0
1977.....	7.8	92.0	99.8	339.5	286.9	218.1	844.5	944.3	6,394.0	14.8
1978.....	8.1	96.8	104.9	365.7	296.1	193.3	855.1	960.0	7,373.7	13.0
1979.....	9.5	121.3	130.8	361.1	363.9	274.2	999.2	1,130.0	9,165.8	12.3
1980.....	9.6	125.8	135.4	401.6	393.1	320.9	1,115.6	1,251.0	10,090.5	12.4
1981.....	9.3	127.0	136.3	368.7	380.0	300.0	1,048.7	1,185.0	9,872.2	12.0
1982.....	9.0	125.0	134.0	377.0	370.0	299.0	1,046.0	1,180.0	9,702.5	12.2
1983.....	10.0	133.0	143.0	385.0	393.0	334.0	1,112.0	1,255.0	9,887.6	12.7
1984.....	11.0	155.0	166.0	435.0	464.0	405.0	1,304.0	1,470.0	10,272.5	14.3
1985.....	10.0	152.0	162.0	402.0	461.0	450.0	1,313.0	1,475.0	10,154.0	14.5
1986.....	11.0	159.0	170.0	444.0	472.0	422.0	1,338.0	1,508.0	9,891.3	15.2
1987.....	13.0	175.0	188.0	506.0	506.0	470.0	1,482.0	1,670.0	10,529.1	15.9
1988.....	13.0	184.0	197.0	530.0	562.0	518.0	1,610.0	1,807.0	11,038.3	16.4
1989.....	14.0	185.0	199.0	540.0	543.0	527.0	1,610.0	1,809.0	10,820.5	16.7
1990.....	13.0	176.0	189.0	505.0	505.0	490.0	1,500.0	1,689.0	10,146.3	16.6
1991.....	13.0	187.0	200.0	545.0	525.0	490.0	1,560.0	1,760.0	10,444.5	16.9
1992.....	14.1	198.9	213.0	560.2	606.5	533.4	1,700.1	1,913.1	10,803.0	17.7
1993.....	12.9	194.2	207.1	544.4	571.0	526.1	1,641.5	1,848.6	10,596.4	17.4
1994.....	13.5	196.6	210.1	533.1	536.5	498.9	1,568.5	1,778.6	10,728.1	16.6
1995.....	13.3	191.6	204.9	586.1	624.2	615.9	1,826.2	2,031.1	11,536.0	17.6
1996.....	12.0	178.5	190.5	538.0	591.7	555.7	1,685.4	1,875.9	11,547.6	16.2
1997.....	10.5	182.4	192.9	525.6	583.0	520.5	1,629.1	1,822.0	11,672.4	15.6
1998.....	9.9	181.2	191.1	526.7	631.8	531.3	1,689.8	1,880.9	12,357.1	15.2
1999.....	9.9	179.2	189.1	553.2	598.2	507.7	1,659.1	1,848.2	12,688.8	14.6
2000.....	9.7	185.7	195.4	561.8	647.0	514.0	1,722.8	1,918.2	13,401.0	14.3
2001.....	8.9	200.9	209.8	586.9	690.8	541.9	1,819.6	2,029.4	14,050.4	14.4
2002r.....	7.9	209.0	216.9	621.9	711.5	590.6	1,924.0	2,140.9	14,715.0	14.5
2003r.....	7.5	203.5	211.0	636.5	585.6	596.9	1,819.0	2,030.0	14,720.0	13.8
2004r.....	7.3	198.0	205.3	622.7	623.3	578.7	1,824.7	2,030.0	14,980.0	13.6
2005r.....	7.2	196.8	204.0	615.1	621.9	559.0	1,796.0	2,000.0	15,195.0	13.2
2006.....	7.1	188.0	195.1	614.4	676.4	570.1	1,860.9	2,056.0	15,065.0	13.6

Note: Pig statistics prior to 1975 are as of June 1.

Source: Agriculture Division, Statistics Canada

Table 50: Sheep and Lambs on Alberta Farms, July 1, 1963-2006

	Rams 1 Year Plus	Ewes & Wethers	Lambs, Breeding Under 1 Year	Lambs, Market Under 1 Year	Total		Alberta as a % of Canada
					Alberta	Canada	
'000 Head							
1963.....	-	-	-	-	431.0	1,346.0	32.0
1964.....	-	-	-	-	400.0	1,272.0	31.4
1965.....	-	-	-	-	355.0	1,132.0	31.4
1966.....	-	-	-	-	301.4	1,005.5	30.0
1967.....	-	-	-	-	260.0	922.0	28.2
1968.....	-	-	-	-	210.0	829.2	25.3
1969.....	-	-	-	-	180.0	796.0	22.6
1970.....	-	-	-	-	199.0	796.0	25.0
1971.....	-	-	-	-	244.9	851.3	28.8
1972.....	-	-	-	-	259.0	845.0	30.7
1973.....	-	-	-	-	255.0	832.5	30.6
1974.....	-	-	-	-	250.0	783.5	31.9
1975.....	-	-	-	-	226.0	702.6	32.2
1976.....	-	-	-	-	183.0	577.2	31.7
1977.....	-	-	-	-	146.5	558.6	26.2
1978.....	-	-	-	-	142.5	587.2	24.3
1979.....	-	-	-	-	153.5	648.7	23.7
1980.....	-	-	-	-	178.0	733.8	24.3
1981.....	-	-	-	-	198.0	803.2	24.7
1982.....	-	-	-	-	203.0	811.9	25.0
1983.....	-	-	-	-	202.0	802.9	25.2
1984.....	4.5	85.5	-	-	188.0	768.8	24.5
1985.....	4.1	75.9	-	-	175.0	720.3	24.3
1986.....	3.9	79.0	17.8	82.9	183.6	694.9	26.4
1987.....	4.3	89.0	21.0	88.7	203.0	731.3	27.8
1988.....	4.6	97.0	23.0	106.4	231.0	788.9	29.3
1989.....	5.0	110.0	26.0	110.0	251.0	827.5	30.3
1990.....	5.6	120.0	28.0	121.4	275.0	874.4	31.5
1991.....	6.0	135.0	32.0	126.0	299.0	917.8	32.6
1992.....	7.6	143.5	36.9	123.0	311.0	897.1	34.7
1993.....	6.0	135.2	27.6	118.2	287.0	883.0	32.5
1994.....	6.3	116.0	29.6	98.1	250.0	825.6	30.3
1995.....	5.7	124.7	31.4	102.2	264.0	857.6	30.8
1996.....	6.0	115.3	30.7	92.5	244.5	846.7	28.9
1997.....	5.8	109.5	28.7	81.7	225.7	821.5	27.5
1998.....	5.9	109.1	26.7	83.3	225.0	892.0	25.2
1999.....	6.5	111.0	30.0	92.5	240.0	979.0	24.5
2000.....	6.6	118.2	35.9	109.3	270.0	1,105.3	24.4
2001.....	7.0	128.8	30.4	120.8	287.0	1,247.7	23.0
2002.....	7.5	132.4	29.1	119.0	288.0	1,252.1	23.0
2003.....	6.7	119.0	27.8	101.5	255.0	1,247.2	20.4
2004.....	5.1	101.5	19.3	122.1	248.0	1,240.5	20.0
2005r.....	5.3	103.5	19.0	111.2	239.0	1,190.5	20.1
2006.....	5.2	103.6	16.0	103.2	228.0	1,151.2	19.8

Note: Sheep statistics prior to 1975 are as of June 1.

Source: Agriculture Division, Statistics Canada

Table 51: Livestock Slaughtered (1), Canada and Provinces, 1999-2006

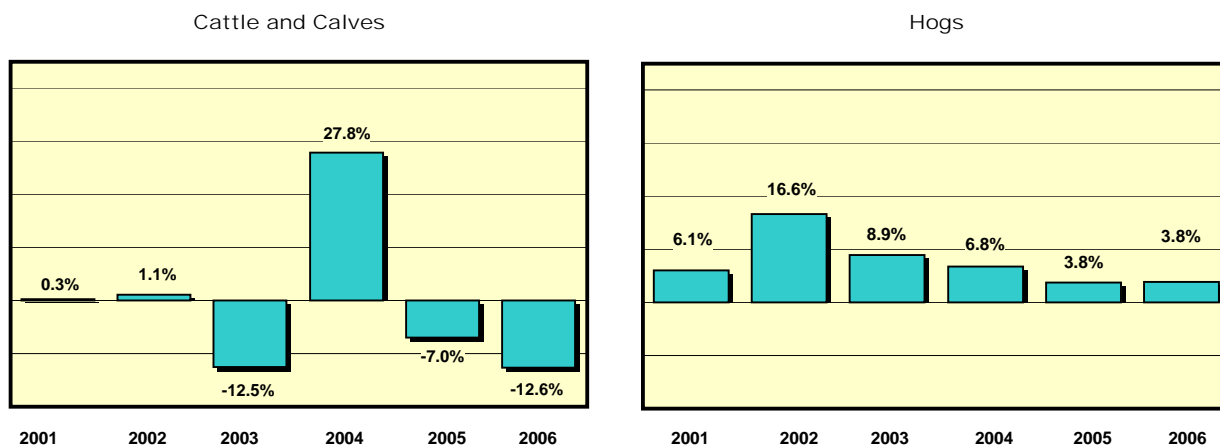
	Canada	Alberta	(2) Sask. & Manitoba	British Columbia	Ontario	Quebec	(3) Atlantic Provinces	
Cattle and Calves - Head								
1999.....	3,848,374	2,322,307	194,648	50,259	809,543	413,016	58,601	
2000.....	3,750,399	2,334,903		198,793	764,373	403,452	48,878	
2001.....	3,693,240	2,342,002		211,512	699,416	394,774	45,536	
2002.....	3,749,650	2,367,910		225,919	707,981		447,840	
2003.....	3,435,781	2,071,455		200,487	729,137		434,702	
2004.....	4,334,220	2,648,341		275,492	863,668		546,719	
2005.....	4,276,557	2,462,980		383,013	852,604		577,960	
2006.....	3,864,771	2,151,811		326,815	844,066		542,079	
	Canada	Alberta	Sask.	Manitoba	British Columbia	Ontario	Quebec	Atlantic Provinces
Hogs - Head								
1999.....	18,771,402	2,135,335	1,023,036	3,073,034	319,593	4,157,888	7,524,386	538,130
2000.....	19,484,817	2,091,472	922,334	3,923,880	346,356	4,039,243	7,653,040	508,492
2001.....	20,541,855	2,218,087	1,040,278	4,147,548	451,171	4,256,837	7,892,285	535,649
2002.....	21,978,971	2,587,197	1,133,882	4,421,297	504,683	4,620,615	8,167,213	544,084
2003.....	22,288,130	2,818,608	1,150,284	4,352,519	512,474	4,757,630	8,173,540	523,075
2004.....	22,701,314	3,008,995	1,149,912	4,355,342	521,714	4,664,010	8,494,115	507,226
2005.....	22,158,685	3,122,016	973,519	4,419,535	503,404	4,602,168	8,095,290	442,753
2006.....	21,619,437	3,241,863	863,712	4,273,330	488,843	4,513,639	7,817,107	420,943
	Canada	Western Canada	Ontario	Quebec	Atlantic Provinces			
Sheep and Lambs - Head								
1999.....	364,529	67,127	196,772	92,283	8,347			
2000.....	401,741	74,124	210,453	107,731	9,433			
2001.....	421,962	82,861	217,333	112,121	9,647			
2002.....	464,726	91,381	242,340	120,904	10,101			
2003.....	508,614	98,143	268,689	130,850	10,932			
2004.....	541,664	116,627	301,050	113,319	10,668			
2005.....	582,085	109,601	308,282	151,503	12,699			
2006.....	548,258	99,670	286,005	151,846	10,737			

(1) Data represent livestock slaughtered in federally and provincially inspected plants, irrespective of origin.

(2) Data for British Columbia is included with Saskatchewan and Manitoba from 2000 onwards.

(3) Data for Atlantic Provinces is included with Quebec for 2002.

Fig. 26 Slaughter Activity in Alberta, Annual Per Cent Change, 2001-2006



Source: Agriculture and Agri-Food Canada

Table 52: Livestock Slaughtered in Alberta (1), 1996-2006

	Steers	Heifers	Cows	Bulls	Total		Hogs	
					Cattle	Calves & Calves		
Head								
1996.....	-	-	-	-	1,794,705	854	1,795,559	2,135,395
1997(2).....	1,025,656	684,020	198,518	5,439	1,913,365	574	1,913,939	2,216,615
1998.....	1,111,853	800,052	189,294	8,878	2,113,768	401	2,114,169	1,596,267
1999.....	1,214,464	902,976	184,135	12,091	2,322,085	222	2,322,307	2,135,335
2000.....	1,246,491	885,050	194,593	7,346	2,334,592	311	2,334,903	2,091,472
2001.....	1,232,796	887,062	217,408	4,180	2,341,749	253	2,342,002	2,218,087
2002.....	1,223,119	909,351	231,917	3,207	2,367,580	330	2,367,910	2,587,197
2003.....	1,152,896	809,113	125,930	3,818	2,067,125	4,330	2,071,455	2,818,608
2004								
Jan.....	83,162	94,791	14,484	425	177,780	204	177,984	227,485
Feb.....	87,401	90,867	19,576	584	195,456	212	195,668	225,237
Mar.....	100,559	137,738	22,690	1,213	260,934	385	261,319	300,795
Apr.....	90,809	86,188	16,656	931	198,437	363	198,800	224,949
May.....	116,028	68,176	10,934	1,256	203,553	225	203,778	230,566
Jun.....	160,353	81,009	17,401	1,436	257,736	380	258,116	280,740
Jul.....	125,530	67,314	14,274	1,722	205,406	300	205,706	224,391
Aug.....	119,624	67,274	13,638	1,616	198,379	278	198,657	229,135
Sep.....	143,854	91,051	18,402	2,376	253,071	341	253,412	275,359
Oct.....	104,186	84,249	14,776	1,566	203,298	289	203,587	226,431
Nov.....	100,936	89,906	18,298	1,768	214,315	292	214,607	240,586
Dec.....	98,663	102,693	21,541	1,744	276,267	440	276,707	323,321
Annual (2).....	1,331,105	1,061,256	202,670	16,637	2,644,632	3,709	2,648,341	3,008,995
2005r								
Jan.....	94,129	86,417	3,350	472	184,368	268	184,636	238,661
Feb.....	94,948	82,133	666	313	178,060	284	178,344	236,802
Mar.....	124,451	135,574	662	386	261,073	351	261,424	292,102
Apr.....	121,402	98,270	1,990	482	222,144	296	222,440	241,234
May.....	114,191	81,181	14,814	1,263	211,449	282	211,731	225,184
Jun.....	159,795	72,700	20,528	1,500	254,523	361	254,884	286,651
Jul.....	126,965	56,045	14,291	1,369	198,530	225	198,755	243,474
Aug.....	149,223	78,672	14,112	1,141	193,587	232	193,819	233,590
Sep.....	102,292	81,028	14,286	1,147	248,034	298	248,332	288,008
Oct.....	65,730	64,746	11,885	1,018	142,237	278	142,515	231,545
Nov.....	81,015	94,444	25,980	1,356	159,924	269	160,193	277,778
Dec.....	59,538	80,276	22,027	946	205,658	249	205,907	326,987
Annual (2).....	1,293,679	1,011,486	144,591	11,393	2,459,587	3,393	2,462,980	3,122,016
2006p								
Jan.....	60,832	66,096	23,998	659	151,583	250	151,833	270,269
Feb.....	61,558	72,960	24,481	633	159,632	279	159,911	267,022
Mar.....	78,147	99,471	28,271	1,024	206,913	342	207,255	334,079
Apr.....	77,663	60,293	20,607	828	159,391	262	159,653	260,035
May.....	114,766	75,325	20,326	968	167,272	240	167,512	261,620
Jun.....	108,068	58,693	18,198	973	230,045	275	230,320	326,198
Jul.....	96,685	41,468	14,799	744	153,696	160	153,856	249,186
Aug.....	123,219	66,137	22,340	1,993	171,308	167	171,475	237,394
Sep.....	86,868	56,114	22,620	1,452	209,435	304	209,739	297,772
Oct.....	77,201	63,524	26,250	1,533	168,508	230	168,738	230,939
Nov.....	84,400	89,963	42,147	1,272	175,510	336	175,846	239,776
Dec.....	63,438	57,894	30,771	1,051	195,426	247	195,673	267,573
Annual (2).....	1,032,845	807,938	294,808	13,130	2,148,719	3,092	2,151,811	3,241,863

(1) Data represents livestock slaughtered in federally and provincially inspected plants in Alberta, irrespective of origin.

(2) Cattle by class type: monthly data do not add up to totals as revisions are unavailable. Breakdown for 1996 unavailable.

Source: "Livestock Market Review", Agriculture and Agri-Food Canada; and Canfax

Fig. 27 Number of Cattle Slaughtered (Excluding Calves), Alberta as a Per Cent of Canada, 1999-2006

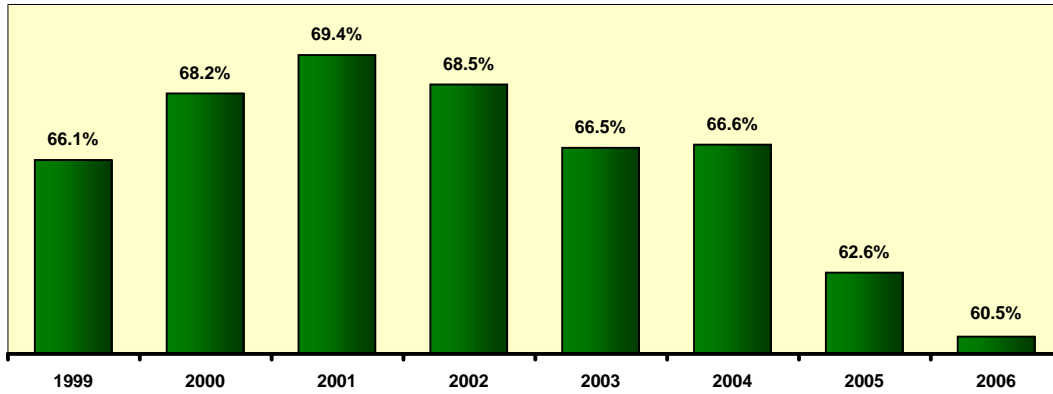


Fig. 28 Cattle and Calves and Hogs Slaughtered in Alberta and Canada, 1999-2006



Note: Data represents livestock slaughtered in federally and provincially inspected plants in Alberta, irrespective of origin.

Source: "Livestock Market Review", Agriculture and Agri-Food Canada; and Canfax

Table 53: Summary of Alberta Slaughter Hog Marketings (1), 1997-2006

	Head		Head
1997.....	2,221,730	2002.....	2,933,187
1998.....	1,746,343	2003.....	3,494,660
1999.....	2,677,053	2004.....	3,468,657
2000.....	2,953,509	2005.....	3,574,185
2001.....	3,016,333	2006.....	3,704,335

(1) Data represents slaughter in federally and provincially inspected plants by province of origin.

Source: "Livestock Market Review", Agriculture and Agri-Food Canada.

Table 54: Alberta Supply and Disposition Livestock Balance Sheet, 2004-2006

July 1 to June 30	Cattle and Calves			Pigs			Sheep and Lambs		
	2004	2005	2006p	2004	2005	2006p	2004r	2005r	2006p
('000 Head)									
Beginning Inventory at									
July 1 (previous year).....	6,100.0	6,400.0	6,700.0	2,030.0	2,030.0	2,000.0	255.0	248.0	239.0
Births (1).....	1,965.5	1,971.5	1,811.7	3,764.9	3,947.6	4,106.2	167.4	161.9	163.0
Interprovincial Imports (2).....	890.1	1,238.9	969.4	22.5	57.9	75.8	0.0	0.0	0.0
International Imports.....	0.0	0.0	0.0	1.3	0.2	0.4	0.0	0.0	3.1
Total Supply.....	8,955.6	9,610.4	9,481.1	5,818.7	6,035.7	6,182.4	422.4	409.9	405.1
Interprovincial Exports (2).....	110.7	139.2	155.7	20.0	20.0	20.0	34.0	28.3	29.8
International Exports.....	0.0	0.0	498.2	471.4	599.6	603.3	0.0	0.0	0.1
Total Slaughter (3).....	2,239.8	2,539.3	2,138.3	3,105.9	3,212.6	3,294.9	116.3	118.3	122.5
Deaths (4).....	205.1	231.9	388.9	191.4	203.5	208.2	24.1	24.3	24.7
Total Disposition.....	2,555.6	2,910.4	3,181.1	3,788.7	4,035.7	4,126.4	174.4	170.9	177.1
Ending Inventory at									
June 30 (current year).....	6,400.0	6,700.0	6,300.0	2,030.0	2,000.0	2,056.0	248.0	239.0	228.0

Note: Ending Inventory is derived by subtracting Total Disposition from Total Supply.

(1) Birth estimates for pigs have been adjusted for peri-natal mortality.

(2) Interprovincial imports and exports of feeder animals only. This number reflects net interprovincial movements in the case of sheep and lambs.

(3) Animals slaughtered in federally and provincially inspected plants (adjusted for interprovincial movements) and farm slaughter.

(4) Deaths include on-farm mortality and condemnations at slaughter.

Source: Agriculture Division, Statistics Canada

Table 55: Alberta Direct to Packer Sales, 1996-2006

	Steers - Live Sales		Heifers - Live Sales		Steers - Railgrade		Heifers - Railgrade	
	No. Sold	\$/100 Lbs.	No. Sold	\$/100 Lbs.	No. Sold	\$/100 Lbs.	No. Sold	\$/100 Lbs.
1996.....	460,998	78.80	219,217	78.89	73,638	129.20	19,366	132.79
1997.....	497,354	83.92	239,144	83.77	68,526	141.56	31,216	137.88
1998.....	536,635	83.60	244,132	84.44	83,610	140.91	29,321	143.04
1999.....	498,088	89.22	211,600	90.24	84,930	148.91	50,386	151.70
2000.....	500,723	94.98	210,500	96.19	106,976	158.95	58,644	159.24
2001.....	519,424	102.68	92,865	172.67	211,879	102.14	59,970	170.80
2002.....	529,805	97.58	251,341	99.50	150,263	158.84	73,344	167.12
2003.....	444,208	81.38	214,766	89.04	-	140.42	-	141.80
2004								
Jan.....	36,471	80.51	29,205	83.06	5,868	131.95	7,809	139.55
Feb.....	37,059	79.50	25,012	79.09	10,008	132.96	6,326	131.07
Mar.....	26,360	86.39	23,785	86.63	17,178	111.15	16,591	147.08
Apr.....	29,429	83.71	20,402	83.97	9,401	140.06	9,422	141.59
May.....	35,522	82.71	21,164	84.05	11,256	139.20	4,885	139.95
Jun.....	45,448	71.93	26,169	71.99	19,643	120.48	7,644	120.11
Jul.....	35,987	70.59	16,367	70.53	15,744	118.61	6,728	118.53
Aug.....	34,889	66.58	14,128	67.03	11,470	113.02	5,213	112.48
Sep.....	58,532	77.26	29,743	77.50	16,364	127.90	8,156	128.21
Oct.....	45,781	78.00	25,534	78.05	12,340	130.44	6,710	131.71
Nov.....	45,004	79.04	31,502	78.91	8,338	132.22	8,722	133.47
Dec.....	52,604	84.94	43,921	85.00	16,955	142.91	9,165	143.14
Annual.....	483,086	78.27	306,932	79.69	154,565	127.17	97,371	134.37
2005								
Jan.....	43,369	85.22	29,248	85.49	13,006	142.48	8,006	143.28
Feb.....	41,532	88.59	25,644	88.77	9,089	148.63	17,309	122.37
Mar.....	54,235	83.26	27,557	83.50	22,261	138.81	15,723	138.12
Apr.....	41,850	80.22	27,575	80.69	25,053	133.48	10,699	135.13
May.....	44,323	79.45	15,783	79.31	20,378	132.29	6,905	132.78
Jun.....	69,260	80.32	21,739	80.52	23,795	134.07	10,658	134.43
Jul.....	61,639	84.71	16,750	84.39	23,628	140.84	12,083	140.13
Aug.....	78,477	85.47	25,443	84.99	21,137	140.54	12,031	140.32
Sep.....	65,154	84.84	29,551	84.80	19,317	139.82	13,263	140.37
Oct.....	44,114	86.55	25,877	86.34	3,430	143.63	6,486	145.13
Nov.....	35,631	91.02	28,382	92.20	16,444	151.83	10,167	151.51
Dec.....	34,081	96.00	21,419	95.81	12,802	159.82	10,588	159.48
Annual.....	613,665	84.93	294,968	85.74	210,340	140.53	133,918	139.23
2006								
Jan.....	35,947	95.23	20,671	95.61	11,393	159.49	11,304	159.56
Feb.....	41,330	89.31	33,293	88.68	8,789	148.44	5,156	147.79
Mar.....	48,899	87.54	40,666	87.60	15,277	145.00	7,956	146.62
Apr.....	37,041	85.09	22,661	84.99	24,953	142.05	4,313	141.83
May.....	46,744	84.64	26,936	84.82	19,663	141.20	7,352	141.42
Jun.....	63,778	86.71	26,097	86.59	21,760	143.65	6,759	143.83
Jul.....	44,859	85.85	18,480	86.01	12,371	142.10	4,012	142.55
Aug.....	53,310	85.09	15,043	84.69	9,709	139.85	7,820	140.05
Sep.....	52,344	86.08	28,872	85.88	14,113	142.48	6,424	142.45
Oct.....	43,312	85.72	27,796	85.76	8,577	141.61	5,999	142.15
Nov.....	41,053	85.09	25,785	85.26	10,148	140.80	5,091	142.08
Dec.....	30,939	85.02	13,211	84.94	7,580	141.69	3,111	141.02
Annual.....	539,556	86.67	299,511	86.84	164,333	143.78	75,297	145.46

Source: "Livestock Market Review", Agriculture and Agri-Food Canada

Table 56: Alberta Slaughter Cattle Prices, 1996-2006

	Slaughter Steers (1)	Slaughter Heifers (1)	Cows D1/D2	Cows D3	Feeder Cows	Bulls
	\$/100 Lbs. Live					
1996.....	78.42	78.67	44.92	38.17	44.54	48.58
1997.....	84.00	83.85	50.48	44.11	53.01	56.84
1998.....	83.56	84.17	50.91	45.45	53.29	61.07
1999.....	89.30	90.34	55.26	48.21	58.38	64.29
2000.....	95.00	95.90	60.47	53.83	63.37	69.40
2001.....	102.82	102.29	63.99	56.42	66.20	75.03
2002.....	97.14	99.58	57.04	50.88	59.08	70.67
2003.....	84.28	85.35	37.04	29.44	45.84	40.85
2004.....	78.40	80.11	23.89	17.48	26.61	20.76
2005.....	84.98	85.87	29.13	22.36	32.40	27.17
2006 Jan.....	95.39	95.77	32.54	25.20	38.16	30.10
2006 Feb.....	89.32	88.72	33.09	25.52	35.31	30.63
2006 Mar.....	87.51	87.72	38.17	30.24	36.88	33.91
2006 Apr.....	85.22	85.00	39.15	30.96	42.53	35.01
2006 May.....	85.03	84.99	36.85	29.26	38.68	34.53
2006 Jun.....	86.92	86.87	35.04	28.39	39.48	33.52
2006 Jul.....	85.84	85.93	38.74	30.96	42.42	36.25
2006 Aug.....	85.23	85.04	39.28	31.85	40.25	37.24
2006 Sep.....	86.01	85.73	36.35	29.52	39.19	34.97
2006 Oct.....	85.69	85.83	38.45	31.54	40.25	34.72
2006 Nov.....	84.97	85.25	31.59	24.78	31.30	27.81
2006 Dec.....	85.68	85.84	34.28	26.71	35.11	28.89
2006 Annual.....	86.66	86.98	36.13	28.74	38.30	33.13

(1) Weighted average of weekly prices.

Source: Canfax

Fig. 29 Alberta Slaughter Cattle Prices, 1996-2006

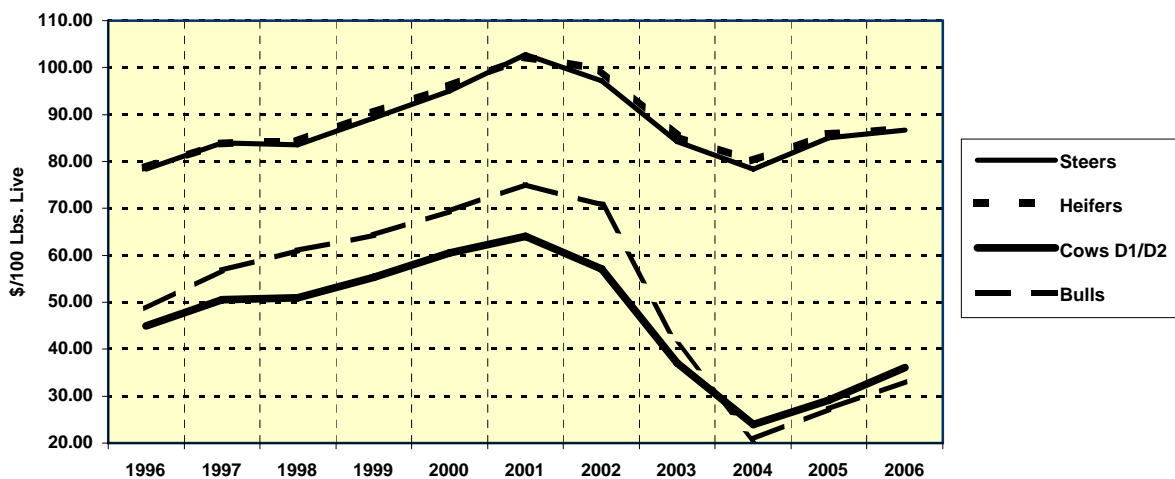


Table 57: Average Feeder Cattle Prices, Edmonton (1), 1994-2006

	Feeder Steers				Feeder Heifers			
	+900 Lbs.	800 to 900 Lbs.	700 to 800 Lbs.	600 to 700 Lbs.	+800 Lbs.	700 to 800 Lbs.	600 to 700 Lbs.	500 to 600 Lbs.
	\$/100 Lbs. Live				\$/100 Lbs. Live			
1994.....	101.16	107.11	110.79	114.10	100.11	106.84	109.50	113.45
1995.....	85.91	91.36	93.78	94.17	86.71	90.49	91.01	91.29
1996.....	73.53	74.89	75.84	77.07	68.12	69.29	69.00	69.58
1997.....	89.35	95.71	99.53	104.36	87.56	91.57	94.32	97.42
1998.....	90.80	98.56	104.39	111.37	90.80	97.95	103.31	109.18
1999.....	96.52	104.48	110.60	119.43	95.22	103.88	110.87	118.47
2000.....	109.61	119.61	128.15	139.78	109.90	122.26	131.06	142.90
2001.....	115.15	124.98	133.42	143.28	118.73	127.45	135.27	145.05
2002.....	105.14	111.57	116.79	123.54	106.91	111.17	115.85	122.15
2003.....	98.36	103.78	108.91	115.68	98.84	103.14	108.73	115.71
2004								
Jan.....	75.85	77.87	81.40	90.64	74.49	77.99	82.53	86.72
Feb.....	68.00	69.17	71.29	79.69	65.05	67.28	70.86	75.55
Mar.....	79.96	81.15	87.16	98.10	76.63	80.35	86.64	93.89
Apr.....	86.73	90.34	98.07	108.37	84.27	89.87	95.81	102.05
May.....	82.46	87.83	95.44	103.87	83.11	88.60	94.02	96.19
Jun.....	74.88	82.18	91.35	99.37	73.43	79.62	84.26	86.45
Jul.....	73.80	81.39	90.41	96.17	74.72	79.43	85.19	87.88
Aug.....	73.96	79.96	84.87	90.45	73.43	77.12	79.38	80.09
Sep.....	83.88	86.75	90.06	92.54	81.69	81.92	82.06	82.64
Oct.....	86.33	88.63	90.66	92.22	82.50	82.54	81.73	84.41
Nov.....	87.39	89.30	90.67	94.09	83.03	82.98	83.72	88.44
Dec.....	89.24	92.54	95.97	100.84	85.34	87.21	90.65	95.93
Annual.....	80.21	83.93	88.95	95.53	78.14	81.24	84.74	88.35
2005								
Jan.....	95.38	99.86	102.36	111.56	91.42	93.33	97.39	104.67
Feb.....	95.83	101.60	107.58	117.05	94.14	98.24	103.06	110.97
Mar.....	83.42	89.86	96.73	107.47	82.59	88.59	95.19	102.19
Apr.....	82.24	87.13	96.46	105.98	81.54	86.75	92.66	97.04
May.....	86.58	92.87	101.85	111.07	86.54	91.28	97.39	101.49
Jun.....	88.31	95.67	105.84	113.78	87.86	93.69	100.77	105.71
Jul.....	100.15	107.71	113.37	116.49	98.18	103.94	107.14	110.57
Aug.....	107.69	115.10	121.81	126.88	107.74	112.59	116.27	119.45
Sep.....	108.30	115.61	121.54	125.19	107.98	111.74	113.80	116.61
Oct.....	110.93	117.59	121.89	126.31	111.71	113.66	115.48	119.89
Nov.....	113.71	117.57	119.72	125.36	110.82	110.17	114.11	121.78
Dec.....	113.89	116.82	119.80	125.61	108.76	110.83	115.08	121.54
Annual.....	98.87	104.78	110.75	117.73	97.44	101.23	105.70	110.99
2006								
Jan.....	112.29	115.41	119.29	129.10	109.12	112.60	118.17	126.56
Feb.....	100.54	105.26	113.24	125.56	101.91	107.53	115.77	124.95
Mar.....	94.71	101.30	111.33	123.34	95.47	102.91	111.67	120.78
Apr.....	89.27	98.23	109.55	122.90	92.12	101.26	112.09	119.26
May.....	92.96	102.34	111.89	121.89	96.00	104.02	110.90	117.19
Jun.....	103.52	109.98	118.20	127.76	105.42	111.42	117.68	123.07
Jul.....	107.63	114.43	120.17	127.85	108.45	113.76	117.70	122.25
Aug.....	107.41	114.50	121.88	127.12	107.36	112.88	117.50	122.12
Sep.....	107.79	114.65	120.63	124.46	107.57	111.40	115.26	119.69
Oct.....	101.23	107.53	111.51	115.63	102.58	103.85	105.76	112.96
Nov.....	93.87	97.81	101.20	105.67	91.05	92.98	96.18	104.40
Dec.....	91.67	94.88	97.62	102.08	87.97	89.49	92.56	99.88
Annual.....	100.24	106.36	113.04	121.11	100.42	105.34	110.94	117.76

(1) Prices prior to 1996 are weighted averages.

Source: "Livestock Market Review", Agriculture and Agri-Food Canada; and Canfax

Table 58: Average Feeder Cattle Prices, Southern Alberta (1), 1994-2006

	Feeder Steers				Feeder Heifers			
	+900 Lbs.	800 to 900 Lbs.	700 to 800 Lbs.	600 to 700 Lbs.	+800 Lbs.	700 to 800 Lbs.	600 to 700 Lbs.	500 to 600 Lbs.
	\$/100 Lbs. Live				\$/100 Lbs. Live			
1994.....	100.94	106.63	112.72	113.96	101.83	108.78	114.31	112.89
1995.....	86.45	93.98	97.38	97.08	87.15	92.70	95.17	91.88
1996.....	73.10	76.04	76.91	77.20	67.93	72.49	71.60	71.24
1997.....	88.48	96.38	99.79	104.70	87.16	94.51	98.27	100.06
1998.....	89.57	98.83	105.01	112.31	90.84	100.14	105.58	110.37
1999.....	96.51	106.39	111.81	121.11	97.09	107.50	114.60	121.65
2000.....	108.89	121.03	129.13	140.85	109.91	123.72	132.72	144.52
2001.....	115.65	126.60	134.80	145.22	120.14	128.74	136.54	145.28
2002.....	105.84	112.01	117.43	124.70	108.63	113.14	118.38	124.55
2003.....	100.16	106.08	112.79	119.57	102.51	104.83	111.27	118.78
2004								
Jan.....	76.56	79.05	82.37	87.45	71.88	74.19	78.54	86.71
Feb.....	65.84	65.59	70.08	77.84	63.60	66.49	72.09	76.50
Mar.....	78.96	82.08	86.42	97.43	75.85	79.19	86.40	93.41
Apr.....	85.26	90.70	97.81	105.88	83.52	86.69	93.77	100.16
May.....	84.18	90.38	97.28	106.77	84.08	88.99	93.09	96.18
Jun.....	70.00	78.49	83.44	90.77	72.17	76.25	80.44	83.42
Jul.....	70.90	76.80	84.11	86.14	70.72	77.39	79.72	81.59
Aug.....	73.38	79.03	82.72	85.03	73.38	76.11	76.67	76.70
Sep.....	82.77	87.08	89.44	91.28	81.68	82.22	82.92	83.14
Oct.....	87.43	89.90	90.46	92.50	83.74	81.92	82.34	84.92
Nov.....	87.09	88.47	90.07	94.45	83.44	83.80	86.20	93.05
Dec.....	89.06	91.49	94.10	98.20	85.75	89.21	93.63	100.84
Annual.....	79.29	83.26	87.36	92.81	77.48	80.20	83.82	88.05
2005								
Jan.....	94.71	101.30	104.46	112.32	94.93	97.70	102.80	109.23
Feb.....	96.16	101.91	108.09	117.89	96.91	100.33	105.80	113.66
Mar.....	86.21	90.82	98.93	110.16	86.56	90.71	98.38	104.78
Apr.....	84.52	87.70	95.87	105.33	83.93	88.87	94.10	101.94
May.....	87.07	93.49	100.75	110.73	87.44	91.82	97.58	102.58
Jun.....	86.81	95.74	99.37	107.77	88.40	91.54	97.06	101.18
Jul.....	101.08	109.85	114.95	118.96	101.31	104.94	108.86	111.97
Aug.....	108.22	115.46	122.02	125.07	109.26	113.08	116.20	118.58
Sep.....	109.24	117.28	122.17	126.76	109.49	114.31	117.02	120.42
Oct.....	112.53	118.14	122.24	128.39	113.89	115.34	118.96	123.61
Nov.....	110.53	116.22	121.27	126.86	110.57	113.25	118.21	123.35
Dec.....	108.89	114.74	121.20	127.31	110.49	113.67	118.22	127.47
Annual.....	98.83	105.22	110.94	118.13	99.43	102.96	107.77	113.23
2006								
Jan.....	109.91	116.73	121.32	127.55	110.51	115.97	119.37	124.28
Feb.....	102.28	108.62	115.42	126.78	102.62	109.47	116.66	126.33
Mar.....	95.59	102.02	111.95	125.45	96.46	104.37	113.94	120.22
Apr.....	91.26	99.13	111.77	125.01	94.95	100.19	110.15	117.98
May.....	92.57	100.69	110.64	123.47	95.73	102.07	110.34	117.46
Jun.....	103.39	109.66	114.93	124.35	104.42	109.80	113.96	121.12
Jul.....	109.94	115.06	120.53	126.21	106.75	111.77	117.44	122.02
Aug.....	108.31	115.96	122.42	125.95	109.80	114.64	117.74	124.54
Sep.....	108.38	116.04	123.90	127.17	108.80	113.58	117.94	123.93
Oct.....	102.94	109.27	112.77	118.55	102.73	104.87	109.86	116.71
Nov.....	94.78	98.95	102.13	107.45	93.06	94.77	99.79	105.77
Dec.....	90.08	93.84	96.43	101.10	87.87	90.47	93.93	99.08
Annual.....	100.79	107.16	113.68	121.59	101.14	106.00	111.76	118.29

(1) Prices prior to 1996 are weighted averages.

Source: "Livestock Market Review", Agriculture and Agri-Food Canada; and Canfax

Table 59: Average Calf Prices, Edmonton (1), 1994-2006

	Feeder Steer Calves			Feeder Heifer Calves	
	500 to 600 Lbs.	400 to 500 Lbs.	Under 400 Lbs.	400 to 500 Lbs.	300 to 400 Lbs.
	\$/100 Lbs. Live			\$/100 Lbs. Live	
1994.....	120.18	132.90	144.43	122.24	132.86
1995.....	97.24	101.75	108.17	92.86	97.74
1996.....	78.48	79.58	80.23	70.05	70.37
1997.....	108.90	113.04	114.84	99.53	100.28
1998.....	118.54	126.99	130.94	114.95	117.90
1999.....	129.79	139.78	147.74	127.72	134.97
2000.....	153.04	171.58	189.76	159.09	174.75
2001.....	156.24	174.28	192.78	160.45	175.85
2002.....	131.97	144.04	152.10	131.02	137.99
2003.....	124.57	134.09	139.59	123.08	127.82
2004					
Jan.....	99.15	103.04	103.50	89.61	90.50
Feb.....	86.95	92.66	95.99	80.34	83.22
Mar.....	104.93	107.94	108.79	97.58	98.85
Apr.....	114.29	115.94	120.75	104.69	106.66
May.....	108.20	110.58	112.25	96.61	98.67
Jun.....	101.85	103.30	105.61	87.78	90.38
Jul.....	97.71	98.36	98.75	88.52	88.63
Aug.....	93.15	94.42	97.52	81.49	86.50
Sep.....	94.89	100.86	104.24	87.73	90.44
Oct.....	98.03	108.11	114.82	91.61	96.47
Nov.....	102.80	113.53	117.91	96.38	102.61
Dec.....	108.71	119.28	123.53	103.19	109.23
Annual.....	100.89	105.67	108.64	92.13	95.18
2005					
Jan.....	118.59	124.00	122.00	110.52	110.25
Feb.....	124.45	129.22	132.59	115.72	118.77
Mar.....	117.43	121.65	120.18	106.51	108.78
Apr.....	110.47	112.26	114.17	101.03	103.23
May.....	115.43	116.11	115.96	104.47	105.30
Jun.....	116.41	117.87	115.75	107.63	106.63
Jul.....	118.94	121.33	123.31	111.73	113.63
Aug.....	131.72	137.88	147.19	124.21	132.02
Sep.....	131.49	141.94	147.37	123.44	129.14
Oct.....	134.72	148.92	157.45	129.28	135.45
Nov.....	135.60	149.09	155.05	130.80	133.94
Dec.....	136.09	146.14	151.78	128.00	131.64
Annual.....	124.28	130.53	133.57	116.11	119.07
2006					
Jan.....	143.00	152.90	158.00	135.60	139.54
Feb.....	139.51	152.53	156.59	133.03	137.31
Mar.....	135.33	146.54	149.81	129.27	131.74
Apr.....	133.80	140.67	144.77	126.86	130.59
May.....	130.51	135.66	140.14	123.04	128.46
Jun.....	134.95	138.75	139.86	126.75	129.74
Jul.....	134.23	139.01	139.96	126.46	130.23
Aug.....	133.73	142.50	146.92	127.52	134.00
Sep.....	130.09	140.71	150.60	125.39	134.71
Oct.....	125.11	137.88	145.39	123.04	129.21
Nov.....	116.79	126.62	134.33	113.24	119.88
Dec.....	112.17	120.11	125.24	106.83	111.06
Annual.....	130.77	139.49	144.30	124.75	129.71

(1) Prices prior to 1996 are weighted averages.

Source: "Livestock Market Review", Agriculture and Agri-Food Canada; and Canfax

Table 60: Average Calf Prices, Southern Alberta (1), 1994-2006

	Feeder Steer Calves			Feeder Heifer Calves	
	500 to 600 Lbs.	400 to 500 Lbs.	Under 400 Lbs.	400 to 500 Lbs.	300 to 400 Lbs.
	\$/100 Lbs. Live			\$/100 Lbs. Live	
1994.....	116.95	124.08	128.28	118.36	120.97
1995.....	95.35	99.12	105.89	93.24	96.29
1996.....	78.06	79.14	82.60	71.46	73.59
1997.....	109.17	114.07	114.59	101.70	98.60
1998.....	119.84	125.85	128.31	115.88	120.77
1999.....	130.22	137.90	145.04	128.40	135.42
2000.....	154.02	169.15	182.76	156.17	170.16
2001.....	157.88	170.32	185.07	156.59	169.21
2002.....	133.21	140.74	147.54	130.31	135.76
2003.....	127.25	133.74	140.49	124.72	128.66
2004					
Jan.....	93.19	99.63	103.25	94.25	96.25
Feb.....	83.65	87.92	92.88	81.33	83.00
Mar.....	105.12	107.41	109.99	96.69	98.86
Apr.....	111.66	114.12	115.38	103.11	104.84
May.....	109.50	110.34	108.44	96.23	96.78
Jun.....	91.80	93.95	96.50	84.72	89.00
Jul.....	88.28	92.41	93.25	82.38	-
Aug.....	85.68	87.88	93.22	79.38	-
Sep.....	93.72	98.51	102.99	86.15	90.17
Oct.....	97.00	109.30	115.47	90.69	95.64
Nov.....	103.30	115.75	120.59	101.22	103.61
Dec.....	106.70	118.33	120.48	103.45	114.39
Annual.....	97.47	102.96	106.04	91.63	97.25
2005					
Jan.....	118.43	121.08	128.52	114.35	118.71
Feb.....	126.43	129.97	134.31	118.63	119.59
Mar.....	118.78	119.25	125.04	110.38	109.20
Apr.....	115.41	117.18	121.13	105.71	111.45
May.....	117.53	119.05	122.04	107.49	108.26
Jun.....	110.67	112.38	112.06	101.96	104.42
Jul.....	121.28	123.74	125.31	114.97	119.50
Aug.....	127.38	135.51	140.88	126.58	128.80
Sep.....	132.02	141.57	145.56	129.64	133.03
Oct.....	134.14	144.60	151.59	132.28	136.78
Nov.....	136.12	148.55	152.88	132.44	137.13
Dec.....	135.43	149.09	152.27	132.42	133.96
Annual.....	124.47	130.16	134.30	118.90	121.74
2006					
Jan.....	136.20	142.52	148.59	130.90	134.17
Feb.....	138.70	146.32	150.53	134.02	138.15
Mar.....	136.20	142.02	145.45	128.03	129.68
Apr.....	133.66	136.82	142.38	124.16	129.91
May.....	131.47	136.35	142.29	124.52	128.72
Jun.....	131.89	132.79	144.50	125.70	133.25
Jul.....	131.34	135.13	141.38	126.13	129.88
Aug.....	133.48	139.75	148.45	129.70	136.83
Sep.....	134.13	143.20	152.23	130.29	138.67
Oct.....	125.72	139.30	146.15	123.78	129.25
Nov.....	115.75	129.14	135.51	113.29	119.74
Dec.....	109.28	118.35	121.92	105.43	109.30
Annual.....	129.82	136.81	143.28	124.66	129.80

(1) Prices prior to 1996 are weighted averages.

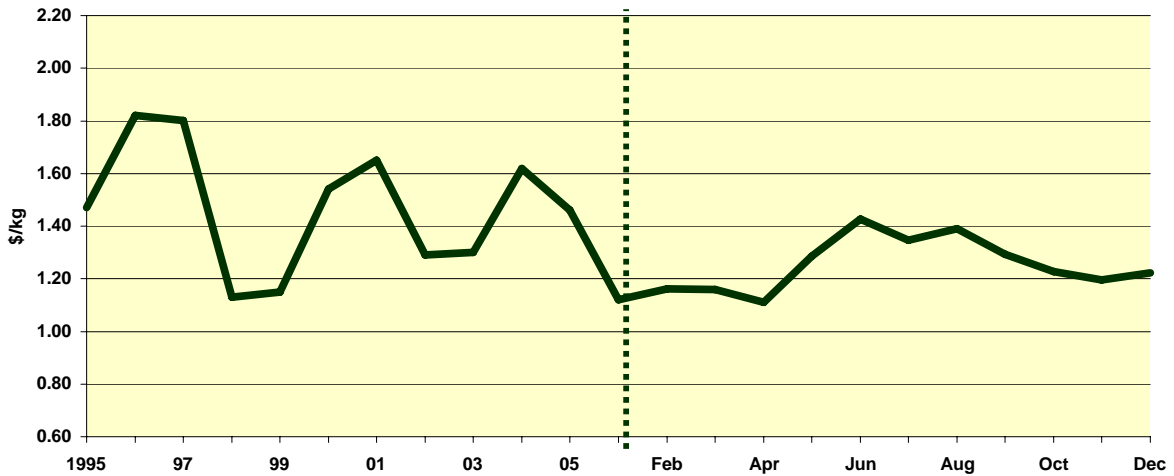
Source: "Livestock Market Review", Agriculture and Agri-Food Canada; and Canfax

Table 61: Alberta Average Slaughter Hog Prices (Index 100), 1995-2006

	Annual Average Price		Monthly Average Price	
	\$ /kg		2005	2006
			\$ /kg	
1995.....	1.47	Jan.....	1.52	1.12
1996.....	1.82	Feb.....	1.47	1.16
1997.....	1.80	Mar.....	1.47	1.16
1998.....	1.13	Apr.....	1.52	1.11
1999.....	1.15	May.....	1.65	1.28
2000.....	1.54	Jun.....	1.84	1.43
2001.....	1.65	Jul.....	1.45	1.35
2002.....	1.29	Aug.....	1.46	1.39
2003.....	1.30	Sep.....	1.39	1.29
2004.....	1.62	Oct.....	1.33	1.23
2005.....	1.46	Nov.....	1.23	1.19
2006.....	1.25	Dec.....	1.22	1.22

Note: Weighted average prices up until 1998.

Fig. 30 Alberta Average Slaughter Hog Prices (Index 100), 1995-2006



Source: "Livestock Market Review", Agriculture and Agri-Food Canada; and Alberta Agriculture and Food

Table 62: Central Alberta Average Market Lamb Prices (95-115 lbs.) (1),
1995-2006

	Annual Average Price	Monthly Average Price	
	\$/100 Lbs.	2005	2006
		\$/100 Lbs.	
1995.....	91.05	Jan..... 93.60	122.40
1996.....	108.20	Feb..... 104.40	126.60
1997.....	108.11	Mar..... 118.08	129.60
1998.....	94.52	Apr..... 115.20	132.00
1999.....	93.88	May..... 114.00	122.40
2000.....	99.40	Jun..... 102.24	120.60
2001.....	86.89	Jul..... 96.60	123.60
2002.....	88.40	Aug..... 106.08	119.52
2003.....	89.95	Sep..... 115.20	118.80
2004.....	83.18	Oct..... 115.20	121.20
2005.....	109.69	Nov..... 115.68	122.40
2006.....	123.36	Dec..... 120.00	121.20

Note: Plant price converted to live weight equivalent.

(1) Simple average prices.

Source: Sunterra Meats; and Alberta Agriculture and Food

Table 63: Alberta Sheep and Lamb Marketings (1), 1995-2006

	Sheep	Lambs	Total Sheep and Lambs
	Head		
1995.....	1,690	55,872	57,562
1996 (2).....	-	-	64,900 (est)
1997 (2).....	-	-	59,900 (est)
1998 (2).....	-	-	57,200 (est)
1999 (2).....	-	-	55,000 (est)
2000 (2).....	-	-	61,800 (est)
2001 (2).....	-	-	71,400 (est)
2002 (2).....	-	-	78,600 (est)
2003r (2).....	-	-	87,300 (est)
2004 (2).....	-	-	105,400 (est)
2005 (2).....	-	-	98,800 (est)
2006 (2).....	-	-	89,700 (est)

(1) These data represent sheep and lambs of Alberta origin slaughtered in Alberta and other Canadian provinces.

(2) Estimate from Alberta's sheep and lamb balance sheets.

Source: "Livestock Market Review", Agriculture and Agri-Food Canada; and Statistics Canada

Table 64: Alberta Brand Inspection Record of Live Cattle and Calf Shipments Out-of-Province (1), 2005 and 2006

	B.C.		Saskatchewan		Manitoba		Ontario		Quebec	
	2005	2006p	2005	2006p	2005	2006p	2005	2006p	2005	2006p
Head										
Feeders.....	21,500	12,596	60,088	65,671	1,106	5,199	33,211	46,152	9,187	14,018
Bulls.....	263	139	1,076	766	59	31	77	314	425	188
Cows.....	1,407	1,260	3,723	3,093	189	34	70	204	300	690
Heifers.....	2,111	1,427	10,228	21,173	18	146	3,394	2,124	338	474
Steers.....	5,577	3,801	20,539	9,395	550	1,900	17,205	12,210	3,488	3,030
Calves.....	1,719	2,280	16,431	21,898	104	2,697	10,628	20,767	2,046	3,800
Yearlings.....	10,423	3,689	8,091	9,346	186	391	1,837	10,533	2,590	5,836
Slaughter.....	6,286	1,553	79,778	38,645	360	19	6,237	6,729	4,782	2,678
Bulls.....	1,057	642	9,335	8,664	87	9	568	1,826	2,111	808
Cows.....	4,397	709	42,018	19,670	133	10	410	251	2,590	1,719
Heifers.....	92	45	8,101	3,210	5	0	2,061	302	40	63
Steers.....	247	148	17,802	4,976	135	0	2,990	3,567	32	9
Calves.....	32	2	218	210	0	0	0	0	9	0
Yearlings.....	461	7	2,304	1,915	0	0	208	783	0	79
Replacement.....	11,247	6,087	9,540	14,653	957	693	282	373	244	477
Bulls.....	731	687	872	937	60	78	50	42	22	11
Cows.....	5,996	3,287	5,751	9,242	637	523	97	157	60	289
Heifers.....	2,353	681	1,253	1,304	97	87	110	154	93	163
Calves.....	2,167	1,432	1,664	3,170	163	5	25	20	69	14
Yearlings.....	0	0	0	0	0	0	0	0	0	0
All Classes.....	39,033	20,236	149,406	118,969	2,423	5,911	39,730	53,254	14,213	17,173

	Maritimes		United States		Other		Total	
	2005	2006p	2005	2006p	2005	2006p	2005	2006p
Head								
Feeders.....	227	0	19,957	45,590	0	0	145,276	189,226
Bulls.....	0	0	0	0	0	0	1,900	1,438
Cows.....	0	0	62	115	0	0	5,751	5,396
Heifers.....	0	0	11,169	15,005	0	0	27,258	40,349
Steers.....	0	0	6,603	14,029	0	0	53,962	44,365
Calves.....	0	0	276	7,132	0	0	31,204	58,574
Yearlings.....	227	0	1,847	9,309	0	0	25,201	39,104
Slaughter.....	0	0	227,208	549,330	41	0	324,692	598,954
Bulls.....	0	0	9	20	0	0	13,167	11,969
Cows.....	0	0	0	11	0	0	49,548	22,370
Heifers.....	0	0	81,420	259,604	0	0	91,719	263,224
Steers.....	0	0	143,940	284,879	41	0	165,187	293,579
Calves.....	0	0	0	6	0	0	259	218
Yearlings.....	0	0	1,839	4,810	0	0	4,812	7,594
Replacement.....	107	12	0	1	0	0	22,377	22,296
Bulls.....	6	5	0	1	0	0	1,741	1,761
Cows.....	0	0	0	0	0	0	12,541	13,498
Heifers.....	100	7	0	0	0	0	4,006	2,396
Calves.....	1	0	0	0	0	0	4,089	4,641
Yearlings.....	0	0	0	0	0	0	0	0
All Classes.....	334	12	247,165	594,921	41	0	492,345	810,476

(1) Shipments exclude unclassified animals.

Source: Livestock Identification Services Ltd.

Table 65: Registrations and Sales of Registered Horses in Alberta, 1997-2006

	1997	1998	1999	2000	2001	2002	2003	2004r	2005r	2006p
Registration by Breed Association - Head										
Arabian.....	563	522	391	394	375	467	283	246	257	241
Appaloosa.....	442	402	353	316	226	198	170	126	207	130
Morgan.....	231	264	200	306	290	295	250	225	248	253
Paint.....	1,649	1,805	1,843	1,824	1,489	1,382	1,095	1,075	855	916
Quarter Horse.....	4,046	4,770	5,753	6,265	6,287	6,516	6,162	6,133	5,836	6,342
Standardbred.....	332	314	334	424	324	272	298	309	310	353
Thoroughbred.....	498	493	533	480	490	478	498	492	558	550
Draft.....	309	327	284	261	247	307	250	201	228	190
Other (1).....	520	664	709	657	954	843	658	678	764	910
Total.....	8,590	9,561	10,400	10,927	10,682	10,758	9,664	9,485	9,263	9,885
Ownership Transfers - Head										
Arabian (2).....	566	538	470	539	392	433	268	293	328	279
Appaloosa.....	358	323	344	305	269	219	293	144	125	127
Morgan.....	243	232	363	383	387	439	388	332	320	238
Paint.....	-	-	-	-	-	-	-	-	-	-
Quarter Horse.....	4,618	5,492	5,495	5,959	5,984	5,971	5,736	5,431	5,506	5,533
Standardbred.....	-	-	-	-	-	-	-	-	-	-
Thoroughbred.....	-	-	-	-	-	-	-	-	-	-
Draft.....	270	391	359	262	281	306	250	192	226	328
Other (1).....	628	788	934	746	1,189	1,110	912	807	944	947
Total (3).....	6,683	7,764	7,965	8,194	8,502	8,478	7,847	7,199	7,449	7,452

(1) Other registrations and transfers include the addition of donkey data in 2001.

(2) Part breed transfers are not recorded (except when made at time of registration).

(3) Transfer totals do not include Standardbreds, Thoroughbreds and Paints.

Source: Alberta Agriculture and Food, Livestock Development Division, Forage and Horse Branch; and Breed Registries

Table 66: Alberta Horse Meat Exports by Destination, 1997-2006

	1997	1998	1999	2000	2001	2002	2003	2004	2005	2006
Quantity - tonnes										
Europe.....	7,246	7,323	6,121	5,504	7,180	5,989	5,410	5,300	4,793	4,175
Japan.....	5,110	5,081	4,846	3,947	3,595	2,222	2,283	3,041	3,245	3,163
United States.....	23	0	0	40	86	18	21	0	0	0
Other Countries.....	254	106	0	377	383	356	1,413	1,522	1,728	1,454
Total.....	12,633	12,510	10,967	9,867	11,244	8,585	9,127	9,863	9,766	8,792
Value - \$'000										
Europe.....	41,492	42,744	39,076	33,829	47,421	38,043	31,307	31,366	28,488	25,880
Japan.....	17,466	19,452	19,347	17,192	17,095	12,952	11,347	13,825	16,752	15,817
United States.....	23	0	0	44	189	18	19	0	0	0
Other Countries.....	407	305	0	612	744	626	1,895	2,675	3,067	2,372
Total.....	59,388	62,501	58,422	51,677	65,450	51,639	44,568	47,866	48,307	44,069

Source: Statistics Canada; and Alberta Agriculture and Food, Statistics and Data Development Unit

Table 67: Pregnant Mare Urine (PMU) Statistics, Alberta, 1989-90 to 2006-07

	Mares	Farms	Gross Revenue
	Number	Number	\$'000
1989-90.....	3,297	27	3,846
1990-91.....	3,416	26	4,472
1991-92.....	5,725	37	6,975
1992-93.....	9,674	64	11,969
1993-94.....	9,571	66	12,475
1994-95.....	9,580	66	13,556
1995-96.....	8,832	66	13,646
1996-97.....	8,042	64	12,950
1997-98.....	8,219	61	11,033
1998-99.....	7,465	60	12,128
1999-00.....	6,108	59	12,685
2000-01.....	6,280	59	14,050
2001-02.....	7,500	56	15,600
2002-03.....	7,700	56	16,533
2003-04.....	6,042	54	14,853
2004-05.....	1,478	19	3,946
2005-06.....	0	0	0
2006-07p.....	0	0	0

Source: Alberta Agriculture and Food, Agri-Industry Commercialization Branch

Table 68: Alberta Dairy Industry, 2001-2006

	2000-01	2001-02	2002-03	2003-04	2004-05	2005-06p
Number of Milk Producers.....	853	817	784	754	723	706
Number of Cream Producers.....	2	1	1	1	0	0
Milk Production ('000 litres).....	629,690	639,079	623,380	635,065	637,044	624,029
Cream Production (kg).....	3,026	3,060	3,304	2,744	0	0
Average Daily Shipment Per						
Milk Producer (litres).....	2,022	2,143	2,178	2,308	2,414	2,422
	2001	2002	2003	2004	2005	2006p
	Calendar Year - \$'000					
Farm Cash Receipts						
Dairy Products.....	348,378	366,827	384,704	382,979	398,675	382,095
Dairy Products - Manufacturing Activity						
Value of Manufacturing Shipments.....	892,453	742,051	1,057,889	1,210,672	1,265,510	1,324,957
International Exports of Dairy Products						
Total.....	11,593	10,867	16,982	6,318	3,244	2,844
To Mexico (1).....	9,588	9,375	0	0	0	0
To Asia-Pacific (2).....	1,704	661	9,370	5,095	176	0
To Other Countries.....	301	831	7,612	1,223	3,068	2,844

Note: Use preliminary numbers (p) with caution.

(1) The principal dairy commodity exported to Mexico is milk powder.

(2) Asia Pacific countries including: Vietnam, Philippines, Thailand, China, Japan, Taiwan, South Korea, Bangladesh, Sri Lanka, Singapore, and Indonesia.

Source: Alberta Dairy Board; Alberta Milk; Statistics Canada; and Alberta Agriculture and Food, Statistics and Data Development Unit

Table 69: Output and Value of Poultry Meats, Alberta, 1995-2006

	Total Production		Consumed by Producers		Sold	
	tonnes	\$'000	tonnes	\$'000	tonnes	\$'000
Stewing Hen and Chicken						
1995.....	63,495	91,713	562	792	62,933	90,921
1996.....	63,710	102,932	565	905	63,145	102,027
1997.....	67,518	107,257	591	938	66,927	106,319
1998.....	74,655	115,688	608	940	74,046	114,747
1999.....	79,748	114,646	608	874	79,140	113,772
2000.....	82,732	118,861	293	417	82,439	118,444
2001.....	86,906	133,015	323	509	86,583	132,506
2002.....	84,306	122,270	273	395	84,033	121,874
2003.....	82,097	124,493	265	402	81,832	124,090
2004r.....	89,197	138,452	269	412	88,928	138,041
2005r.....	87,494	141,955	268	427	87,226	141,529
2006p.....	87,901	138,000	268	417	87,633	137,583
Turkey						
1995.....	12,435	20,771	38	64	12,397	20,707
1996.....	11,686	21,977	37	69	11,649	21,908
1997.....	11,754	21,803	38	71	11,716	21,732
1998.....	11,314	20,772	39	72	11,275	20,700
1999.....	11,694	20,695	39	69	11,655	20,626
2000.....	11,408	20,265	39	69	11,369	20,196
2001.....	13,127	23,790	38	69	13,089	23,721
2002.....	11,764	21,450	38	69	11,726	21,381
2003.....	13,191	24,242	34	62	13,157	24,180
2004.....	12,129	23,209	33	62	12,096	23,147
2005r.....	13,118	24,034	33	61	13,085	23,973
2006p.....	13,324	23,886	33	60	13,291	23,826
Total Stewing Hen, Chicken and Turkey						
1995.....	75,930	112,484	600	856	75,330	111,628
1996.....	75,396	124,909	602	974	74,794	123,935
1997.....	79,272	129,060	629	1,009	78,643	128,051
1998.....	85,969	136,460	647	1,012	85,321	135,447
1999.....	91,442	135,341	647	943	90,795	134,398
2000.....	94,140	139,126	332	486	93,808	138,640
2001.....	100,033	156,805	361	578	99,672	156,227
2002.....	96,069	143,720	310	464	95,759	143,256
2003.....	95,288	148,735	299	471	94,989	148,270
2004r.....	101,326	161,661	302	474	101,024	161,188
2005r.....	100,612	165,989	301	488	100,311	165,502
2006p.....	101,225	161,886	301	477	100,924	161,409

Source: Statistics Canada Cat. No. 23-015 XIB, "Poultry and Egg Statistics"

Table 70: Production, Disposition and Value of Eggs, Alberta, 1995-2006

	Production		Disposition						
	Average No. of Layers	Dozens	Sold (Includes Exports)				Leakers & Rejects	Producer	
			For Consumption	Value	For Hatching	Value		Use for Consump.	Value
	'000	'000	'000 doz.	\$'000	'000 doz.	\$'000	'000 doz.	'000 doz.	\$'000
1995.....	1,989	41,782	34,964	35,725	5,546	16,392	816	456	491
1996.....	1,953	40,728	33,906	37,764	5,561	16,437	793	468	508
1997.....	1,952	40,369	33,570	35,467	5,546	16,392	785	468	494
1998.....	1,987	40,844	34,022	35,309	5,546	16,392	796	480	510
1999.....	1,998	40,735	33,927	35,223	5,546	16,392	794	468	525
2000.....	2,157	41,553	33,390	34,948	6,345	22,200	810	468	585
2001.....	2,244	43,608	35,658	38,213	6,607	23,613	851	492	625
2002.....	2,244	42,599	34,809	40,523	6,563	23,349	831	396	511
2003.....	2,235	43,178	35,445	41,006	6,493	23,544	844	396	508
2004.....	2,299	44,343	36,413	44,322	6,670	24,703	864	396	527
2005r	2,346	45,769	37,836	41,438	6,646	24,308	891	396	488
2006 Jan.....	2,365	4,010	3,346	3,560	553	1,975	78	33	41
Feb.....	2,318	3,548	2,979	3,223	467	1,666	69	33	41
Mar.....	2,286	3,855	3,250	3,518	497	1,775	75	33	41
Apr.....	2,312	3,769	3,177	3,468	486	1,735	73	33	42
May.....	2,264	3,817	3,186	3,480	524	1,869	74	33	42
Jun.....	2,248	3,636	3,025	3,306	507	1,839	71	33	42
Jul.....	2,317	3,870	3,225	3,555	537	1,951	75	33	42
Aug.....	2,375	3,925	3,252	3,619	563	2,042	77	33	43
Sep.....	2,381	3,795	3,150	3,505	538	1,955	74	33	43
Oct.....	2,374	3,932	3,277	3,520	545	1,980	77	33	41
Nov.....	2,385	3,856	3,201	3,436	547	1,987	75	33	41
Dec.....	2,344	3,940	3,321	3,562	509	1,846	77	33	41
Annual.....	2,331	45,953	38,389	41,752	6,273	22,620	895	396	500

Source: Statistics Canada Cat. No. 23-015 XIB, "Poultry and Egg Statistics"

Table 71: Chickens Slaughtered in Registered Stations, Alberta, 1994-2006

	Under 1 kg	1 to 2 kg	2 kg and Over	Total
	Eviscerated Weight - tonnes			
1994.....	1,329	56,141	2,420	59,890
1995.....	784	59,938	2,126	62,848
1996.....	613	59,597	1,869	62,079
1997.....	750	65,674	1,824	68,247
1998.....	325	70,344	1,563	72,232
1999.....	54	77,335	683	78,072
2000.....	30	79,542	302	79,874
2001.....	8	84,424	341	84,773
2002.....	7	81,680	561	82,248
2003.....	5	79,419	561	79,985
2004.....	8	93,018	57	93,083
2005.....	19	85,287	30	85,337
2006p.....	33	84,853	70	84,956

Source: Agriculture and Agri-Food Canada

Table 72: Alberta Game Farming Industry, 1997-2006

	Licenced Game Farms	Farms With Elk	Elk on Farms	Farms With Deer	Whitetail Deer on Farms	Mule Deer on Farms	Reindeer on Farms
	Number						
1997.....	400	273	15,449	136	3,717	360	-
1998.....	459	335	19,638	155	4,884	282	66
1999.....	513	377	25,914	168	6,499	319	159
2000.....	575	424	33,265	182	8,601	323	191
2001.....	601	451	42,021	181	11,057	391	251
2002.....	605	460	48,186	188	12,152	442	289
2003.....	602	453	45,963	172	9,663	408	317
2004.....	535	426	41,631	138	8,400	403	318
2005r.....	505	391	36,495	123	8,039	306	309
2006p.....	476	268	30,635	106	7,119	278	248

Source: Alberta Agriculture and Food, Regulatory Services Division, Inspection and Investigation Branch