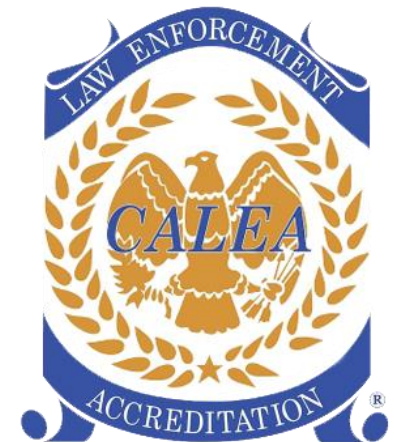


COMMERCIAL VEHICLE ENFORCEMENT

Manure Management Update 2015



Overview:

- Cargo Securement
- Legal Weights
- Floatation Tires
- Slow Moving Vehicles
- Exemptions

Cargo Securement

Cargo securement requirements

17 (4) A driver, a carrier or an owner of a commercial vehicle shall ensure that cargo transported by a commercial vehicle is contained, immobilized or secured so that it cannot

- (a) leak, spill, blow off, fall** from, fall through or otherwise be dislodged from the commercial vehicle, or
- (b) shift upon or within the commercial vehicle** to such an extent that the commercial vehicle's stability or manoeuvrability is adversely affected.

Cargo – means all articles or material carried by a vehicle, including those used in the operation of the vehicle.

(Commercial Vehicle Safety Regulation AR 121/2009)

Loose Cargo



Loose Cargo



Loose Cargo



Loose Cargo



Loose Cargo



Loose Cargo



Loose Cargo



Loose Cargo



Loose Cargo



Loose Cargo



Weights:

Legal weights for Commercial Vehicles:

- Steering axle: 5500kgs power unit or 7300kgs truck
- Single axle: 9100kgs
- Tandem axle: 17 000kgs
- Tridem axle: 24 000kgs

Legal weights for Farm Trailers:

- Farm trailers fall under quantum axle groups
- 9100 kilograms for a quantum axle group consisting of 2 axles
- 17 000 kilograms for a quantum axle group consisting of 3 or more axles with 12 or more tires
- 15 000 kilograms for a quantum axle group consisting of 3 or more axles with fewer than 12 tires

Note: all weights are subject to tire capacities and specific measurements for each respective grouping.

Weights, Permits, and Roads Bans

Please note that Alberta weights, permits, and roads bans are only valid on provincial highways and roads.

Additional permits must be obtained, and weights and road bans must be complied with each respective municipality and county travelling through.

Floatation Tires:

Sec. 32(1) In this section and sections 33 to 36

(h) “self-propelled floater implement of husbandry” means a motor vehicle that is designed, adapted or modified exclusively for the field application of fertilizers.

Sec. 36 Self-propelled floater implement of husbandry

No person shall operate a self-propelled floater implement of husbandry on a paved highway at any time during which the implement is carrying a load.

(Commercial Vehicle Safety Regulation AR 121/2009)

Self-propelled floater implement of husbandry **CANNOT** be loaded and operated on a highway



Slow Moving Vehicles:

Sec. 3(2) (Schedule 1)

A commercial vehicle shall not be operated on a highway if it is:
(c) a piece of machinery or equipment used at or designed for a maximum speed not exceeding 40 kilometres per hour,
Unless a slow moving vehicle sign is displayed on the vehicle.

(Commercial Vehicle Safety Regulation AR 121/2009)



Slow Moving Vehicle

Slow Moving Vehicles:

Slow moving vehicles:

Sec. 3(1) If a person driving a vehicle is driving the vehicle on a highway at a speed that is less than the normal speed of the traffic on the highway at that time and place and under the conditions then existing, that person shall drive the vehicle
(a) in the right traffic lane then available for traffic, or
(b) as close as practicable to the right curb or edge of the roadway

(Use of Highway Rules of The Road Regulation AR 304/2002)



Exemption for Farmers:

Farmers are exempt from having an air brake endorsement on their licence while operating a farm vehicle. They are **NOT** exempt from the class of licence.



Exemptions for Farm Plated Vehicles:

- Written pre-trip inspection reports
- Log books, when travelling within the province
- CVIP's (Annual mechanical inspections)

Notes:

- We are starting to see a trend with farmers voluntarily getting their vehicles inspected, so they are at least looked at once a year.
- Farm vehicles are legislated to be in the same working order as normal commercial vehicles.

Examples of Neglected Equipment









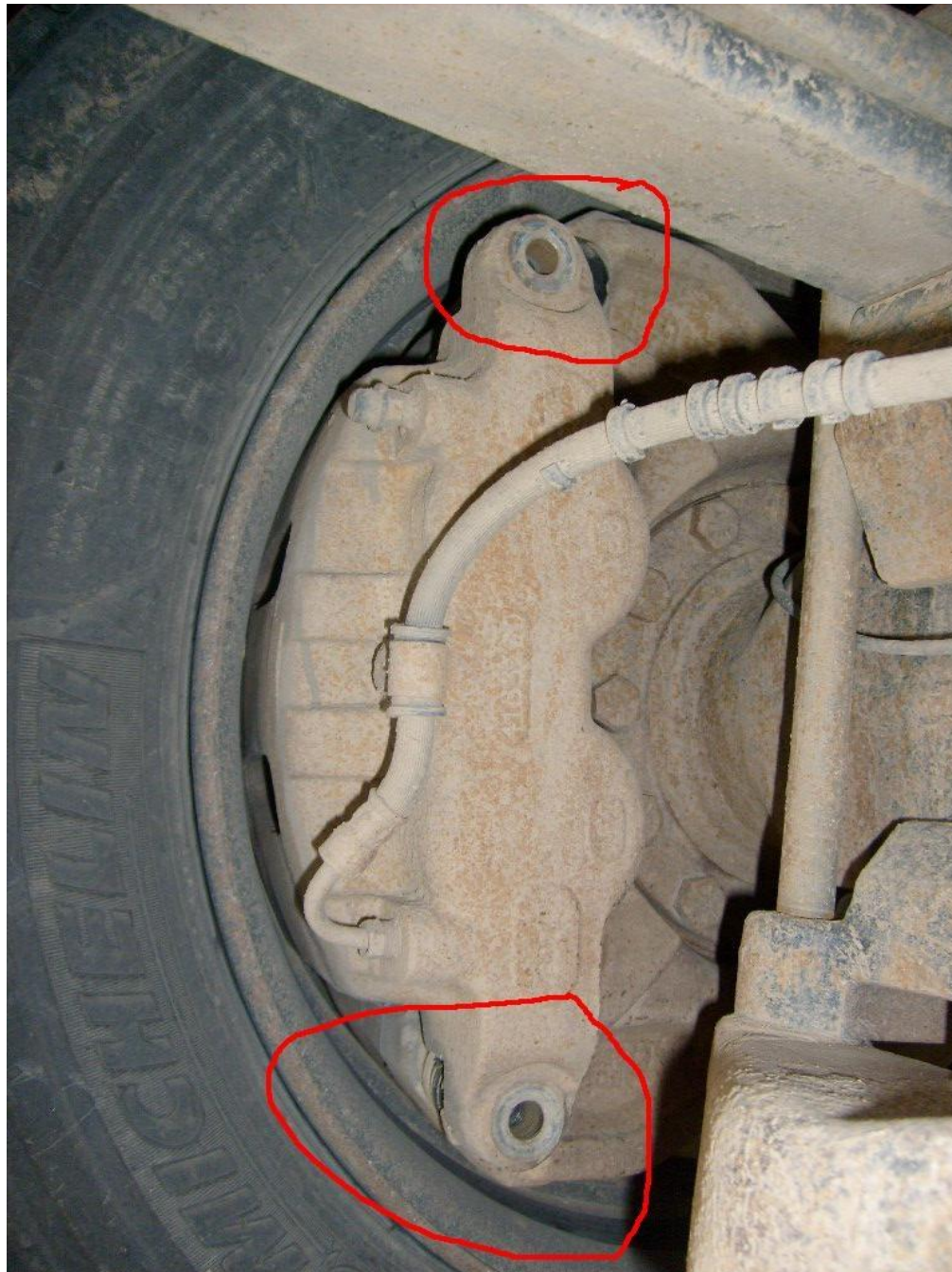














Public Highways Development Act

43(1) A person who, without justification or excuse,
 (a) obstructs or deposits any material on a
highway, or
 (b) interferes with, breaks, cuts or otherwise
injures a highway,
is guilty of an offence.

Any Questions or Comments?