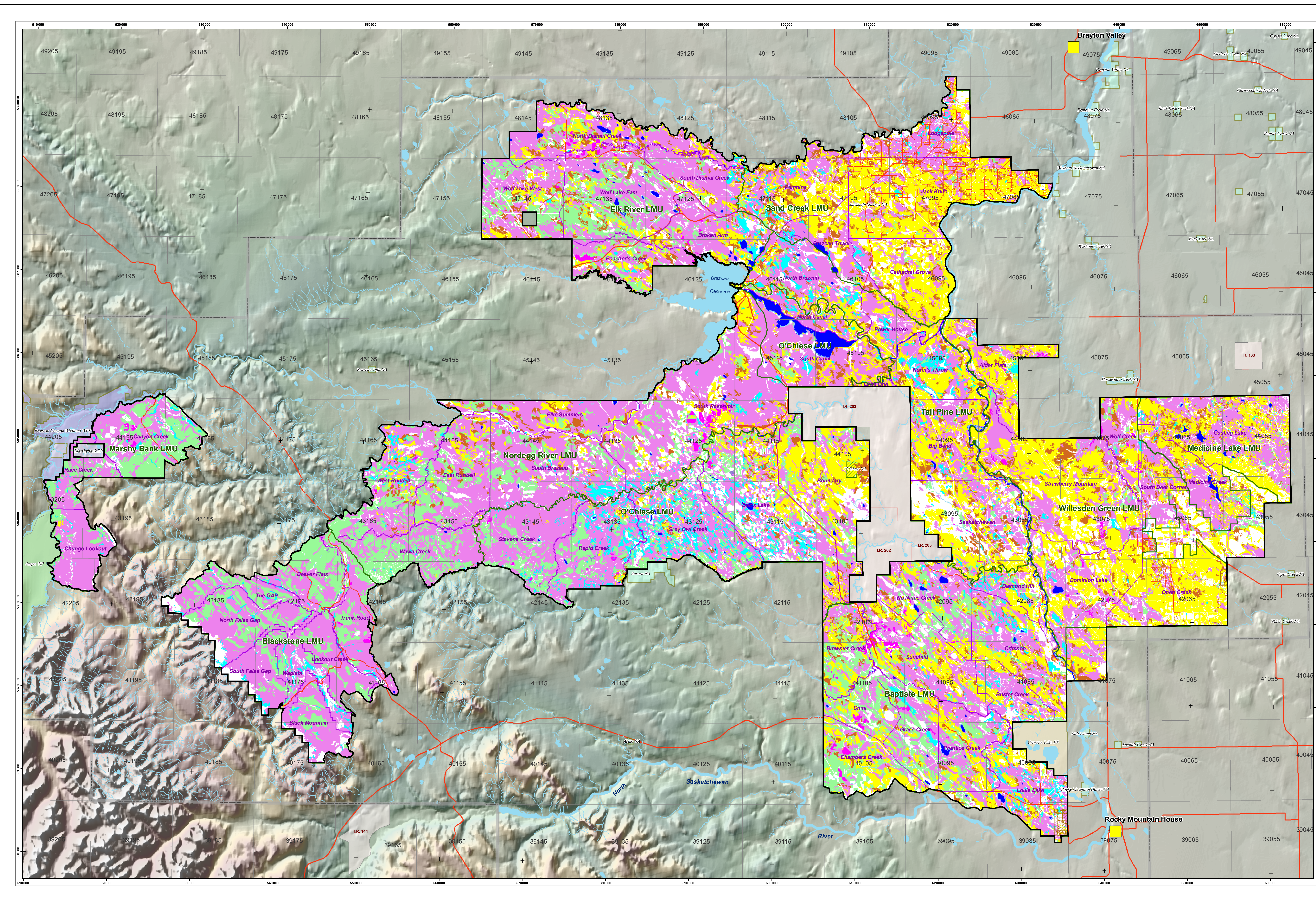


# Fuel Type - Fire Behaviour Prediction (FBP)



**Sustained Yield Unit R12**

**Weyerhaeuser Drayton Valley**

**Fire Fuel Type  
Fire Behaviour Prediction (FBP)**

**Legend**

**Base Features**

- SYU Boundary
- Extent of Net Landbase Digital Data
- LMU Boundary
- Harvest Design Area
- Roads / Access
- ATS
- Communities
- Reserve
- Lakes / Rivers
- Streams

**Protected Areas**

- NP - National Park
- PP - Provincial Park
- WPP - Wildland Park
- ER - Ecological Reserve
- NA - Natural Area

**Recreation/Natural Areas Inside FMA**

- Natural Areas
- Recreational Lease

**Fuel Code & Description**

- C-1, Spruce/Lichen Woodland
- C-2, Boreal Spruce
- C-3, Mature Jack or Lodgepole Pine
- C-4, Immature Jack or Lodgepole Pine
- C-7, Ponderosa Pine/Douglas-fir
- D-1, Leafless Aspen
- M-1, Boreal Mixedwood - leafless
- O1a, Grass
- NF, Non-fuel
- WA, Water

Classification derived from ASRD AV2FBP fire management model

**Weyerhaeuser Drayton Valley  
Location Map**

1:150,000 @ 50" X 28"  
1:350,000 @ 22" X 12"

Projection: UTM Zone 11 - Datum: NAD83 (CSRS)

**Timberline**  
Forest Inventory Consultants

Timberline Forest Inventory Consultants  
Resource Analysis Department  
Edmonton, Alberta  
May 16, 2015

Asst. Project Manager: [Name], [Title]