

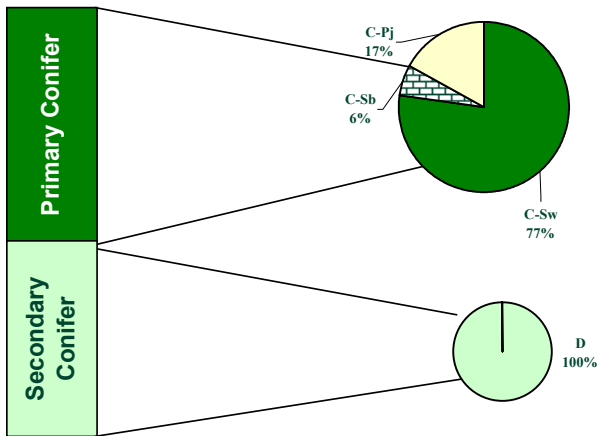
The Alberta-Pacific FMA Area Timber Supply Analysis

FMU S18



Summary Category (60-Year Average)	Prim Coniferous		Prim Deciduous		Total
Net Harvestable Landbase (ha)	-		-		212,679
LRSY (m ³ /yr)	187,902		339,088		526,990
Woodstock™ Aspatial AAC (m ³ /yr)	159,461		224,090		383,551
Stanley Spatial AAC - (m ³ /yr)	156,786	98%	222,437	99%	379,222
Stand Retention Deduction	0%		5%		-
Cull Deduction	2%		4%		-

Woodstock/Stanley Spatial Coniferous Harvest Summary by Cover Type: 60-Year Average

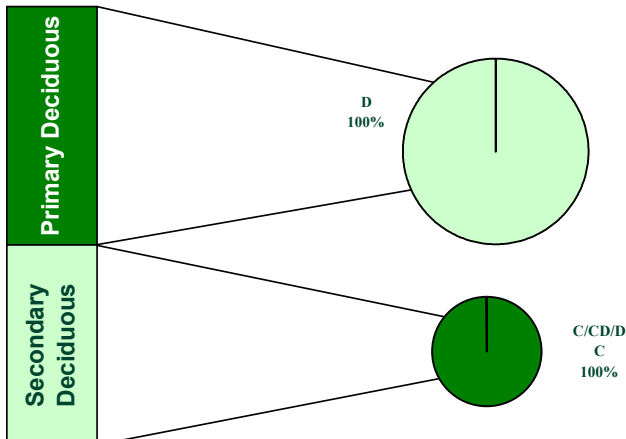


Primary Coniferous Average Harvest	
Cover Group	m ³ /yr
C-Sw	121,148
C-Sb	8,949
C-Pj	26,688
Total	156,786

Incidental Coniferous Average Harvest	
Cover Group	m ³ /yr
D	58,413
Total	58,413

Total Conifer Harvest	215,199
------------------------------	----------------

Woodstock/Stanley Spatial Deciduous Harvest Summary by Cover Type: 60-Year Average



Primary Deciduous Average Harvest	
Cover Group	m ³ /yr
D	222,437
Total	222,437

Incidental Deciduous Average Harvest	
Cover Group	m ³ /yr
C/CD/DC	57,560
Total	57,560

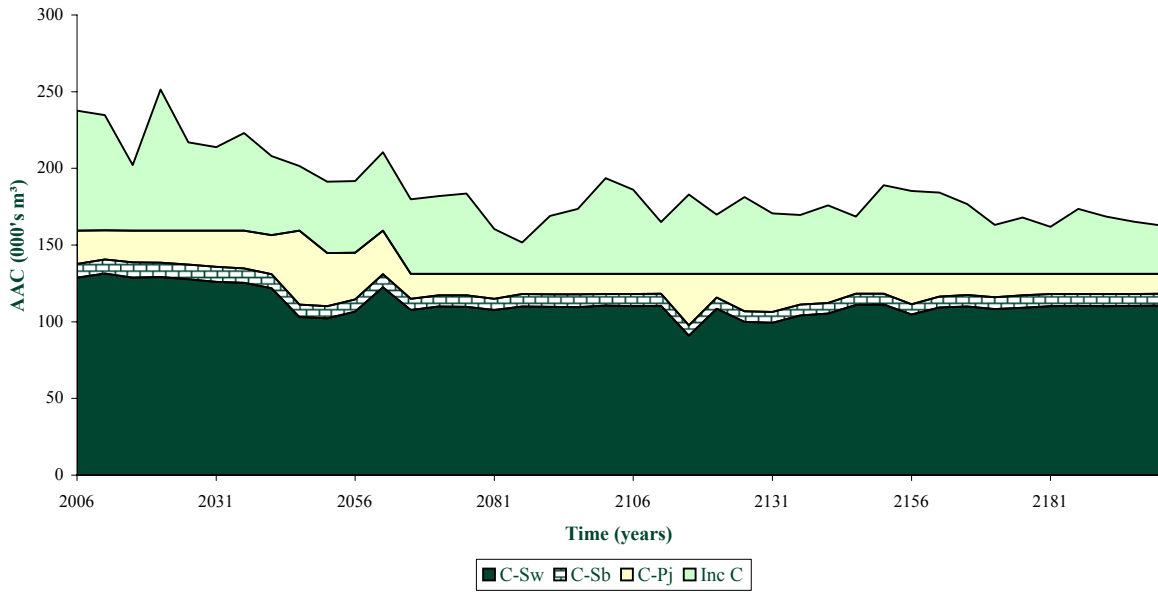
Total Deciduous Harvest	279,996
--------------------------------	----------------

The Alberta-Pacific FMA Area Timber Supply Analysis

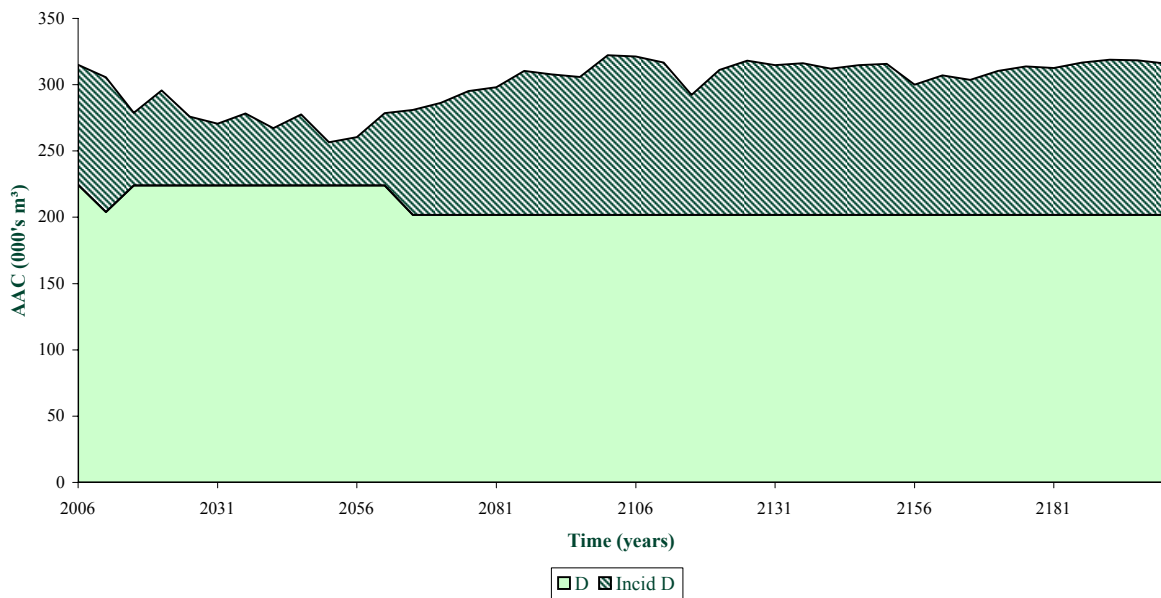
FMU S18



FMA and Non-FMA Coniferous AAC by Cover Type



FMA and Non-FMA Deciduous AAC by Cover Type

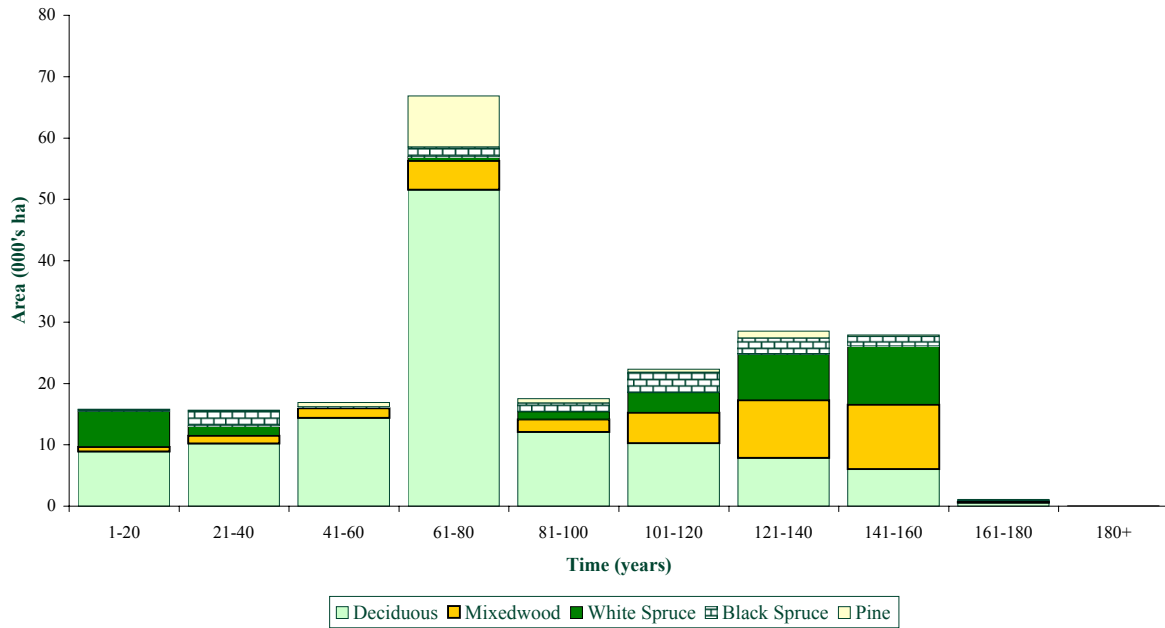


The Alberta-Pacific FMA Area Timber Supply Analysis

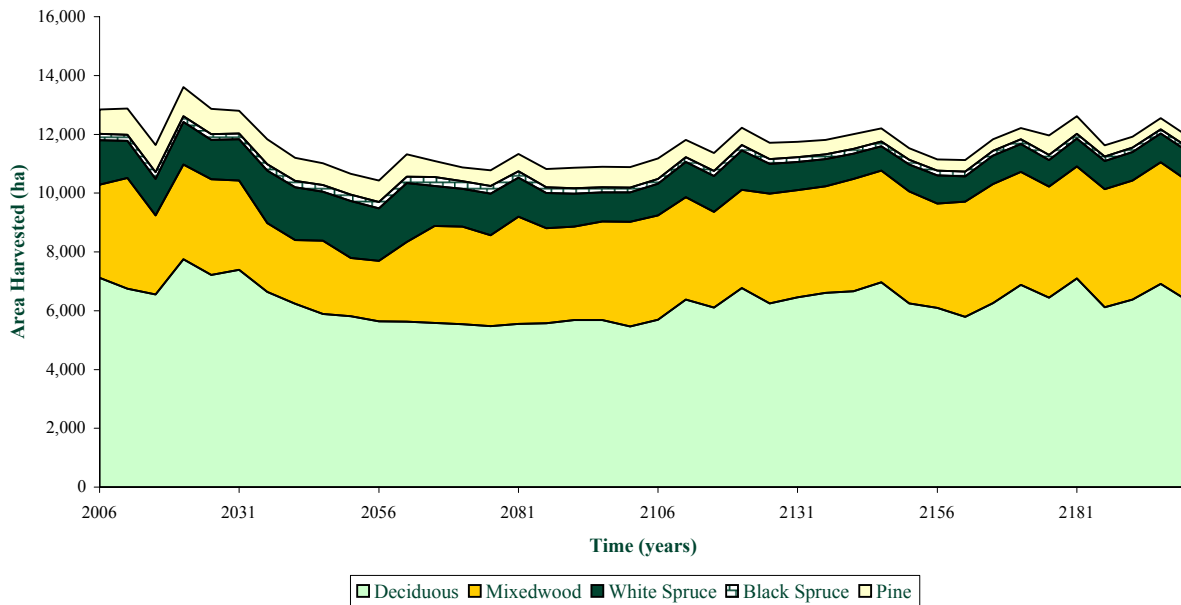
FMU S18



Initial Ageclass Structure by Cover Type



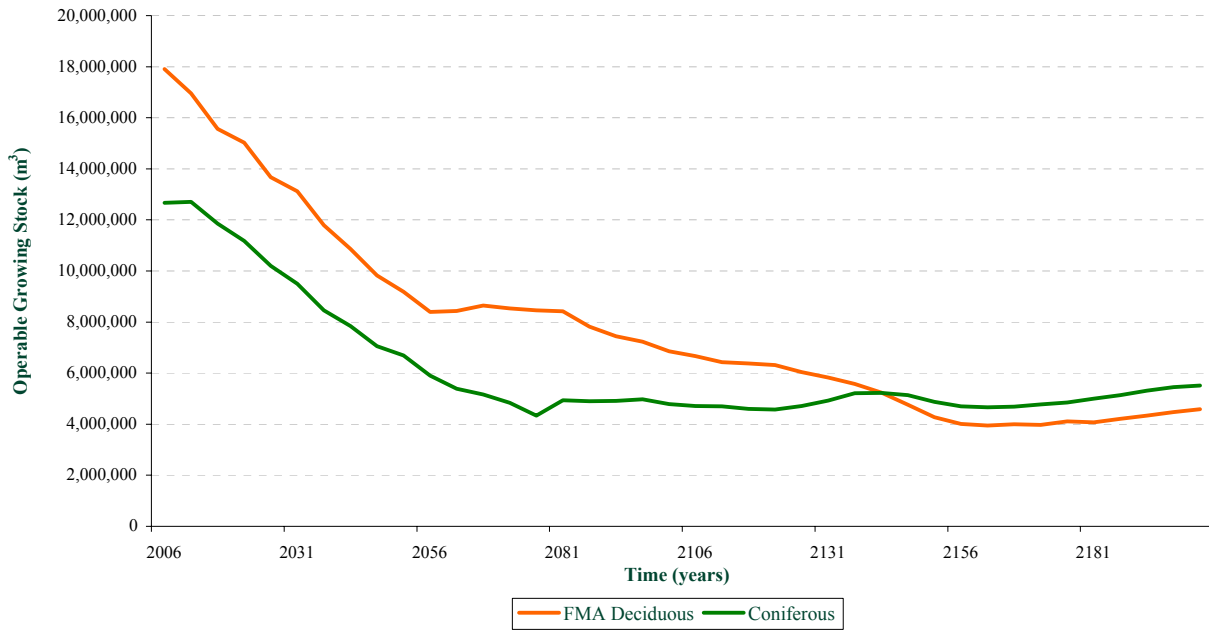
Area Harvested by Cover Type



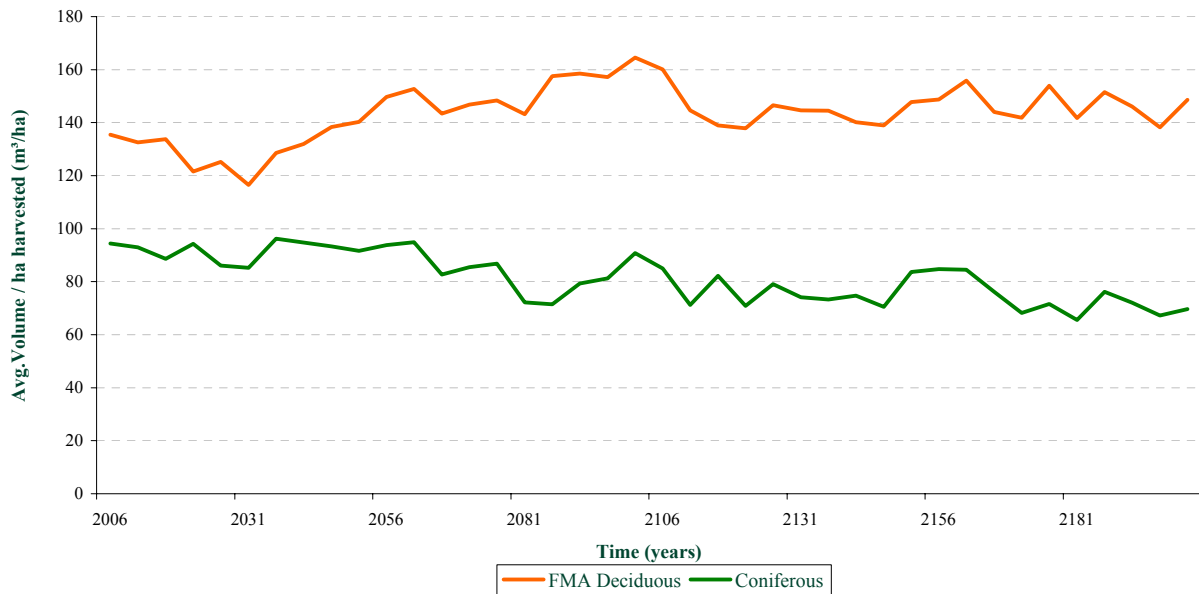
The Alberta-Pacific FMA Area Timber Supply Analysis FMU S18



Growing Stock Over Time



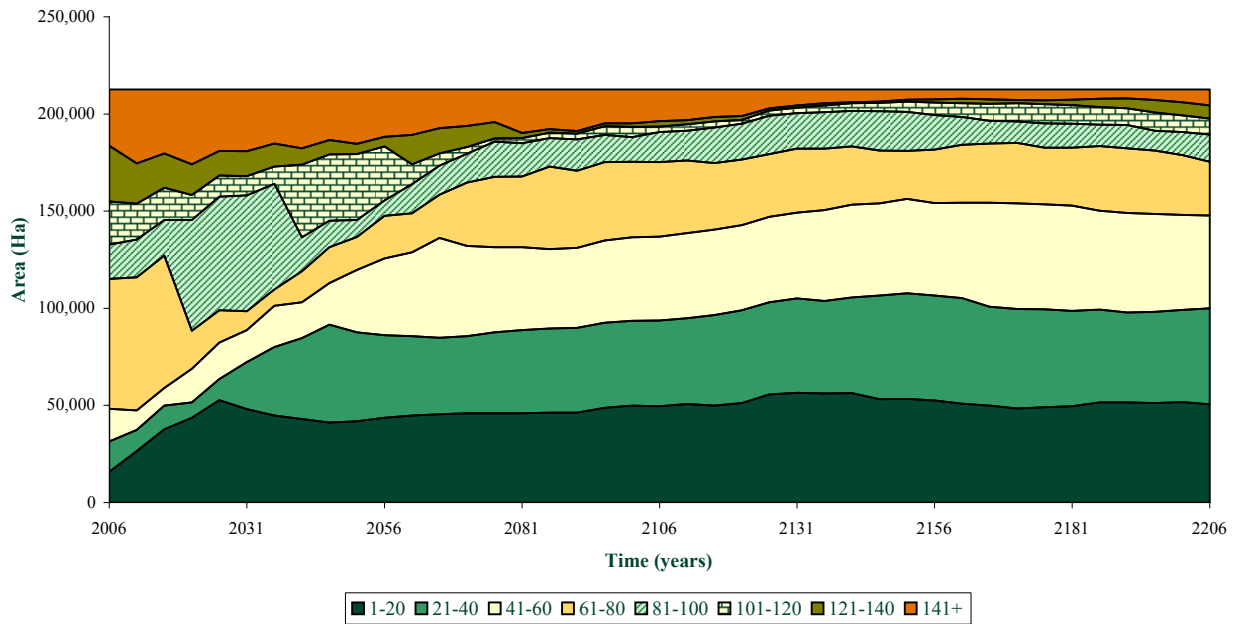
Average Volume Per Ha Harvested Over Time



The Alberta-Pacific FMA Area Timber Supply Analysis FMU S18



Age Class Distribution



Average Harvest Ages Over Time

Species Group	Now	+ 50 Years	+ 100 Years	+ 150 Years	+ 200 Years
Deciduous	129	115	82	80	66
Deciduous/Coniferous	135	112	110	75	68
Coniferous/Deciduous	144	168	84	80	80
White Spruce	136	183	87	104	100
Black Spruce	133	139	175	120	133
Pine	113	114	80	105	113