

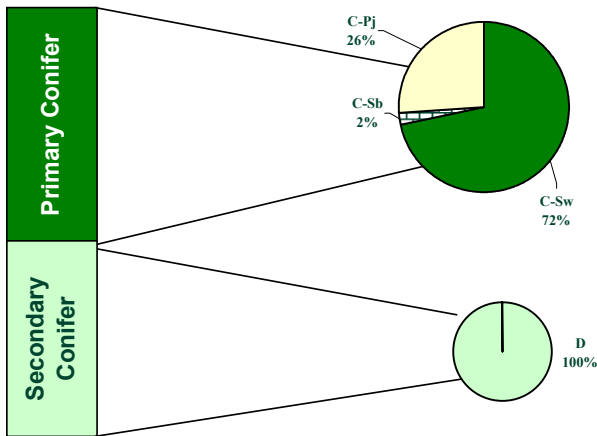
The Alberta-Pacific FMA Area Timber Supply Analysis

FMU L8



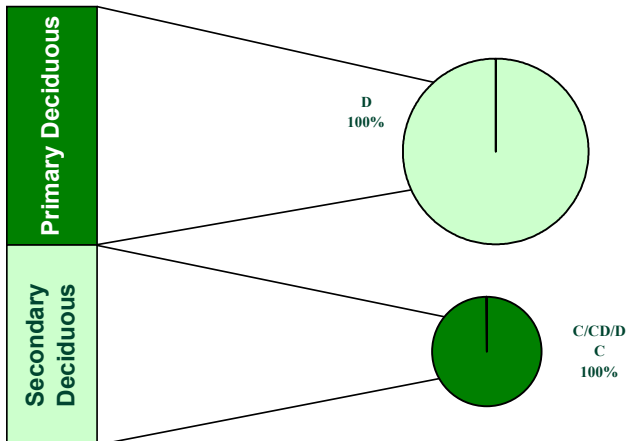
Summary Category (60-Year Average)	Prim Coniferous	Prim Deciduous	Total
Net Harvestable Landbase (ha)	-	-	44,802
LRSY (m³/yr)	36,459	76,306	112,766
Woodstock™ Aspatial AAC (m³/yr)	29,027	57,260	86,287
Stanley Spatial AAC - (m³/yr)	28,588	54,861	83,449
Stand Retention Deduction	0%	5%	-
Cull Deduction	2%	4%	-

Woodstock/Stanley Spatial Coniferous Harvest Summary by Cover Type: 60-Year Average



Primary Coniferous Average Harvest	
Cover Group	m³/yr
C-Sw	20,494
C-Sb	641
C-Pj	7,452
Total	28,588
Incidental Coniferous Average Harvest	
Cover Group	m³/yr
D	10,940
Total	10,940
Total Conifer Harvest	39,527

Woodstock/Stanley Spatial Deciduous Harvest Summary by Cover Type: 60-Year Average



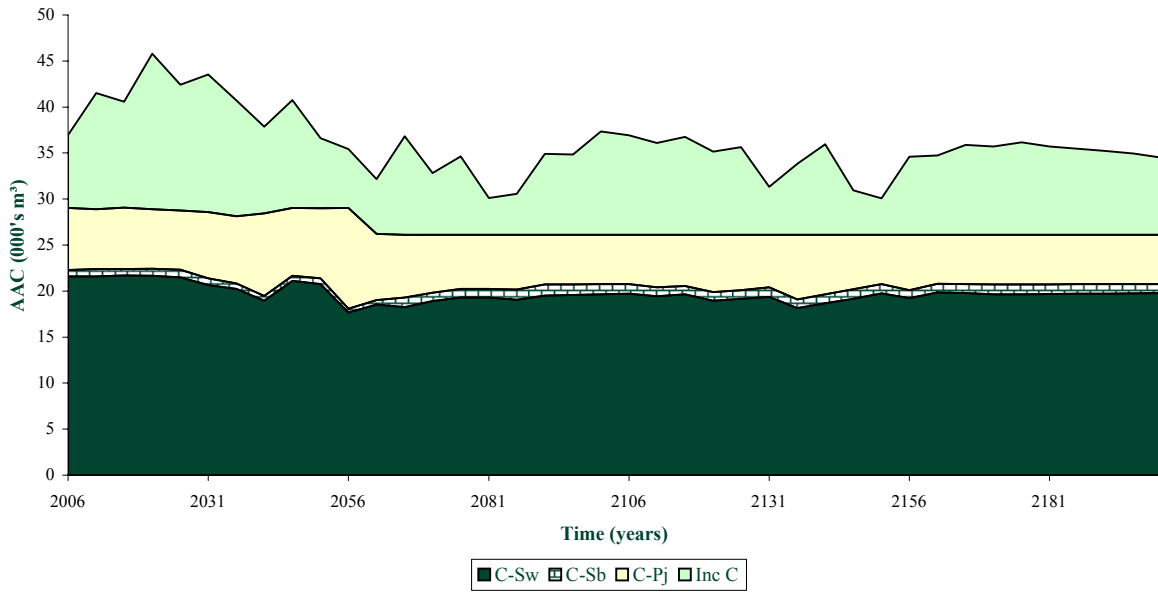
Primary Deciduous Average Harvest	
Cover Group	m³/yr
D	54,861
Total	54,861
Incidental Deciduous Average Harvest	
Cover Group	m³/yr
C/CD/DC	10,890
Total	10,890
Total Deciduous Harvest	65,751

The Alberta-Pacific FMA Area Timber Supply Analysis

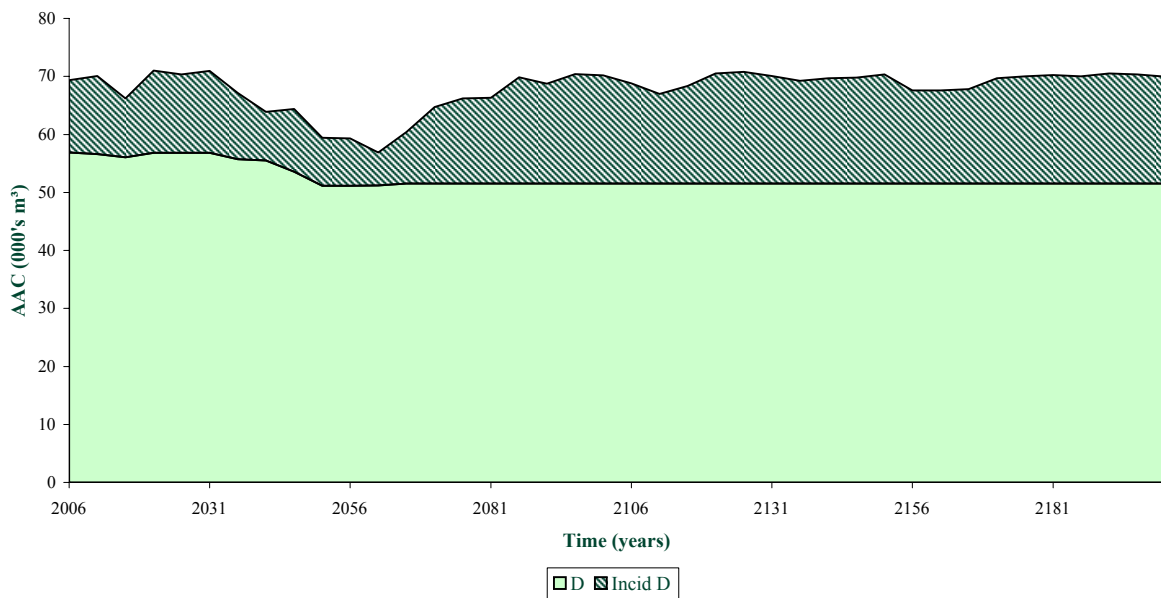
FMU L8



FMA and Non FMA Coniferous AAC by Cover Type



FMA and Non-FMA Deciduous AAC by Cover Type

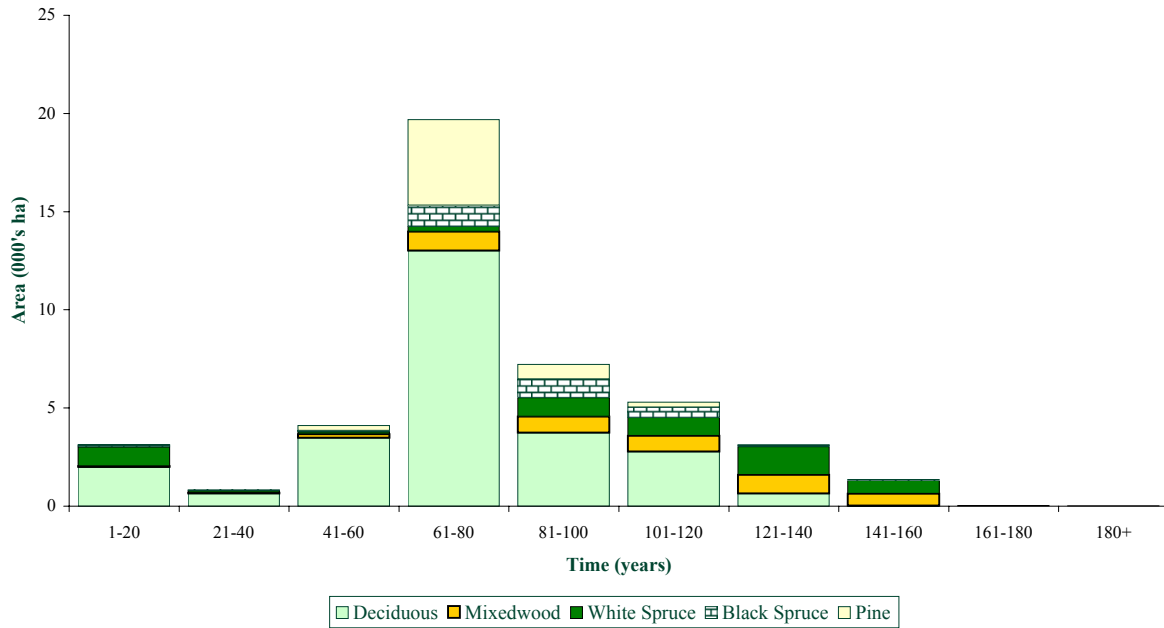


The Alberta-Pacific FMA Area Timber Supply Analysis

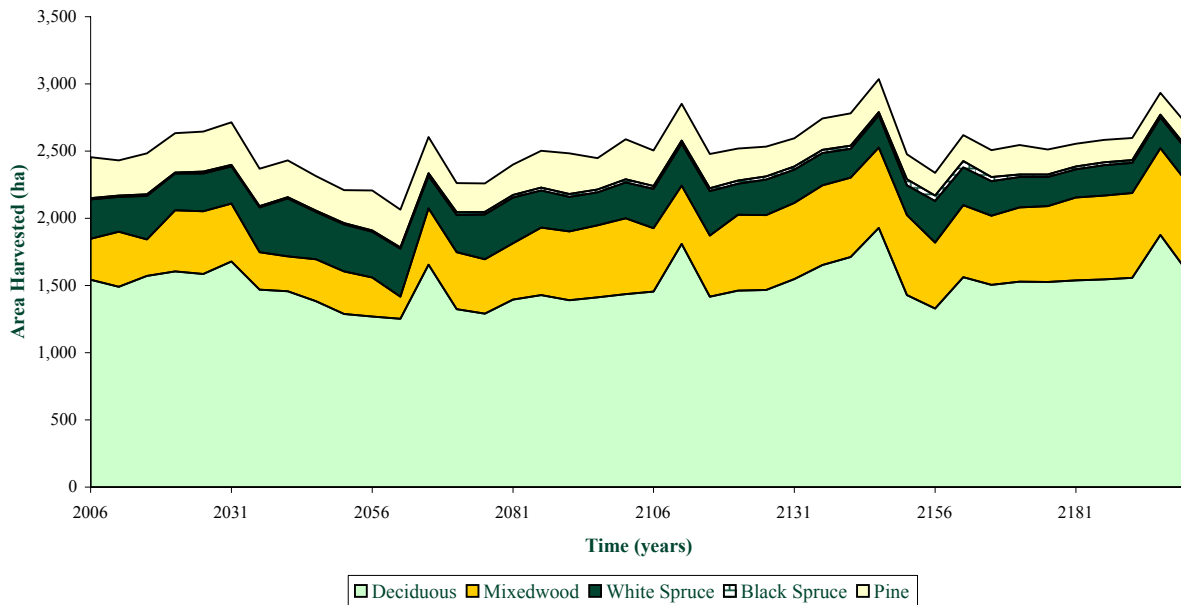
FMU L8



Initial Ageclass Structure by Cover Type



Area Harvested by Cover Type

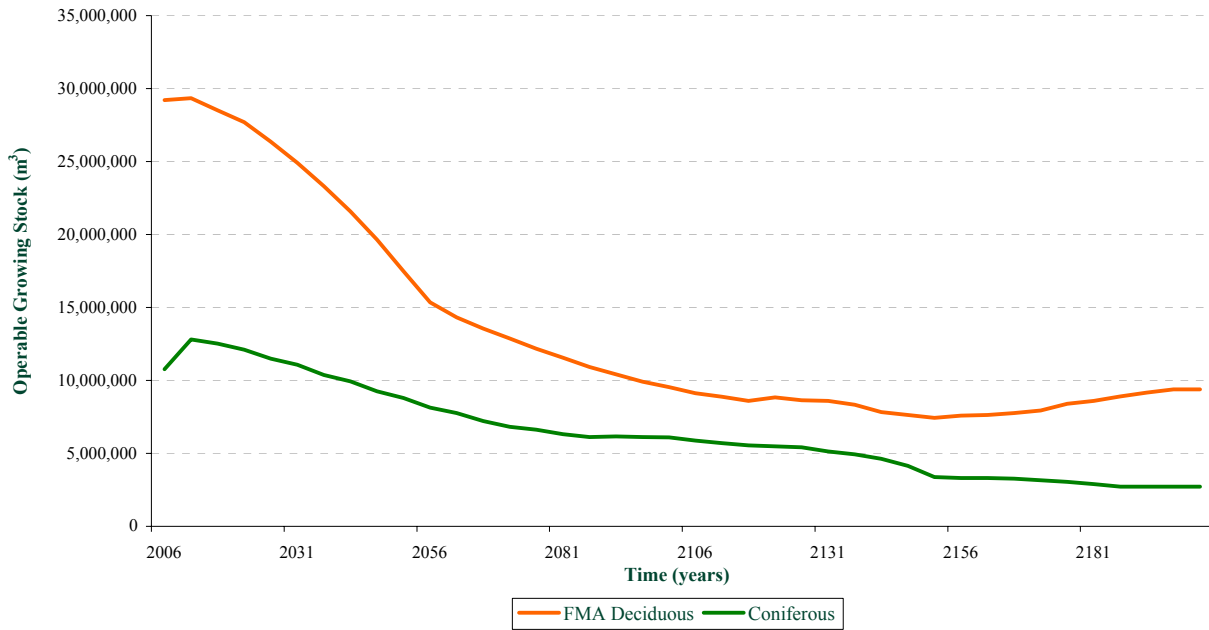


The Alberta-Pacific FMA Area Timber Supply Analysis

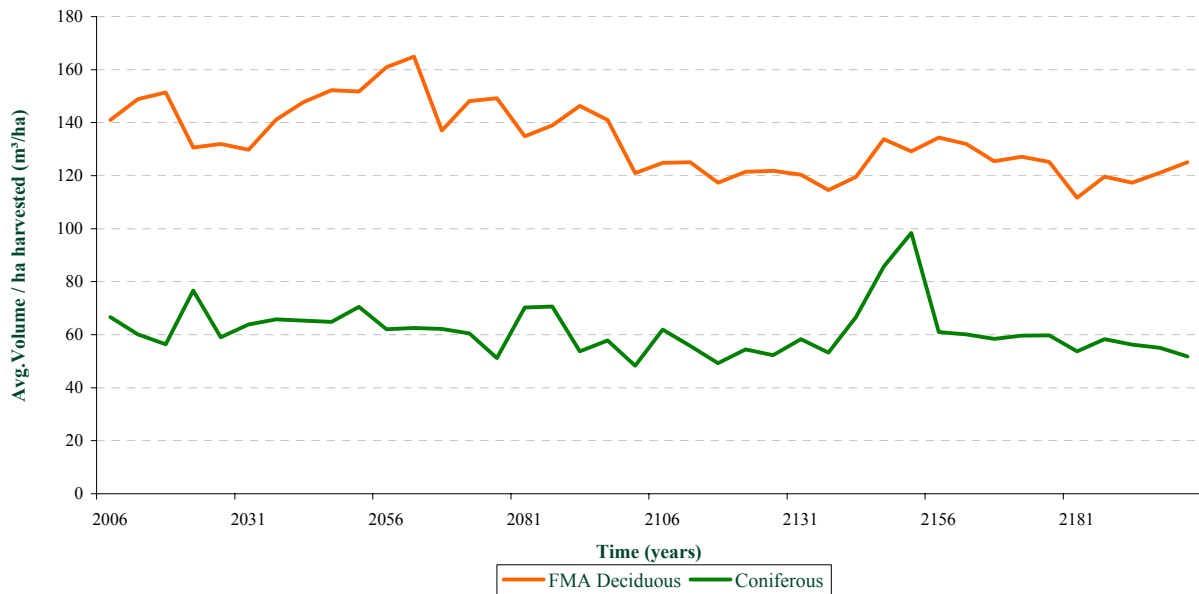
FMU L8



Growing Stock Over Time



Average Volume Per Ha Harvested Over Time

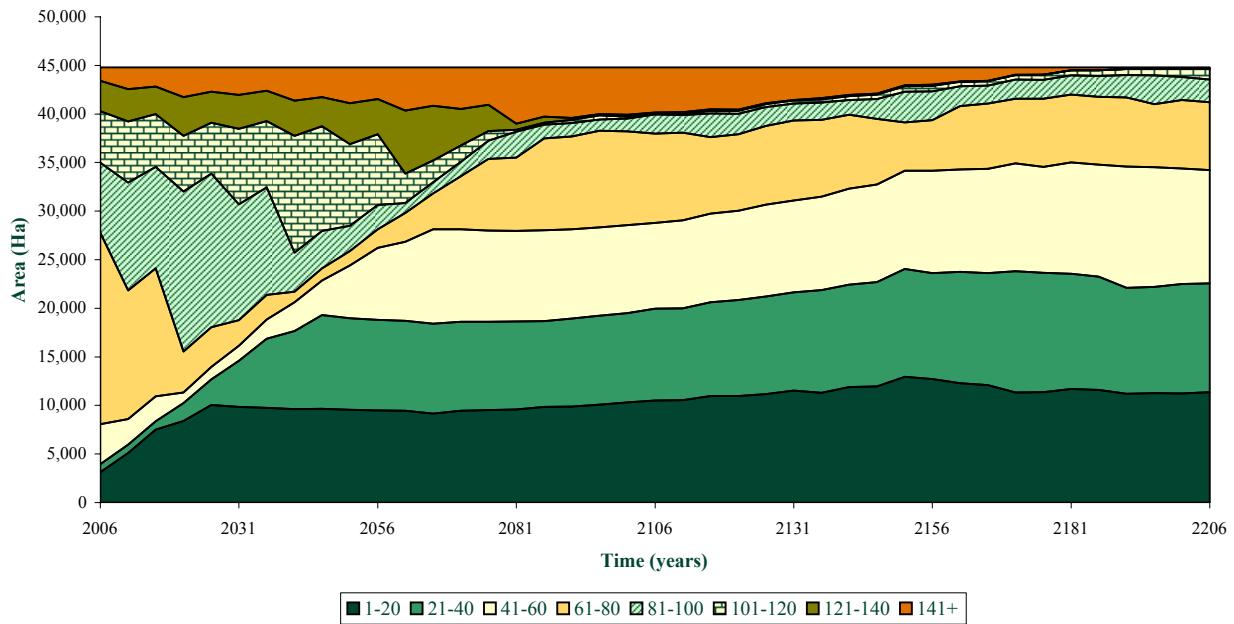


The Alberta-Pacific FMA Area Timber Supply Analysis

FMU L8



Age Class Distribution



Average Harvest Ages Over Time

Species Group	Now	+ 50 Years	+ 100 Years	+ 150 Years	+ 200 Years
Deciduous	90	117	82	81	67
Deciduous/Coniferous	101	119	85	72	62
Coniferous/Deciduous	126	182	80	80	80
White Spruce	133	155	80	100	95
Black Spruce	120	127	165	218	120
Pine	88	119	82	99	103