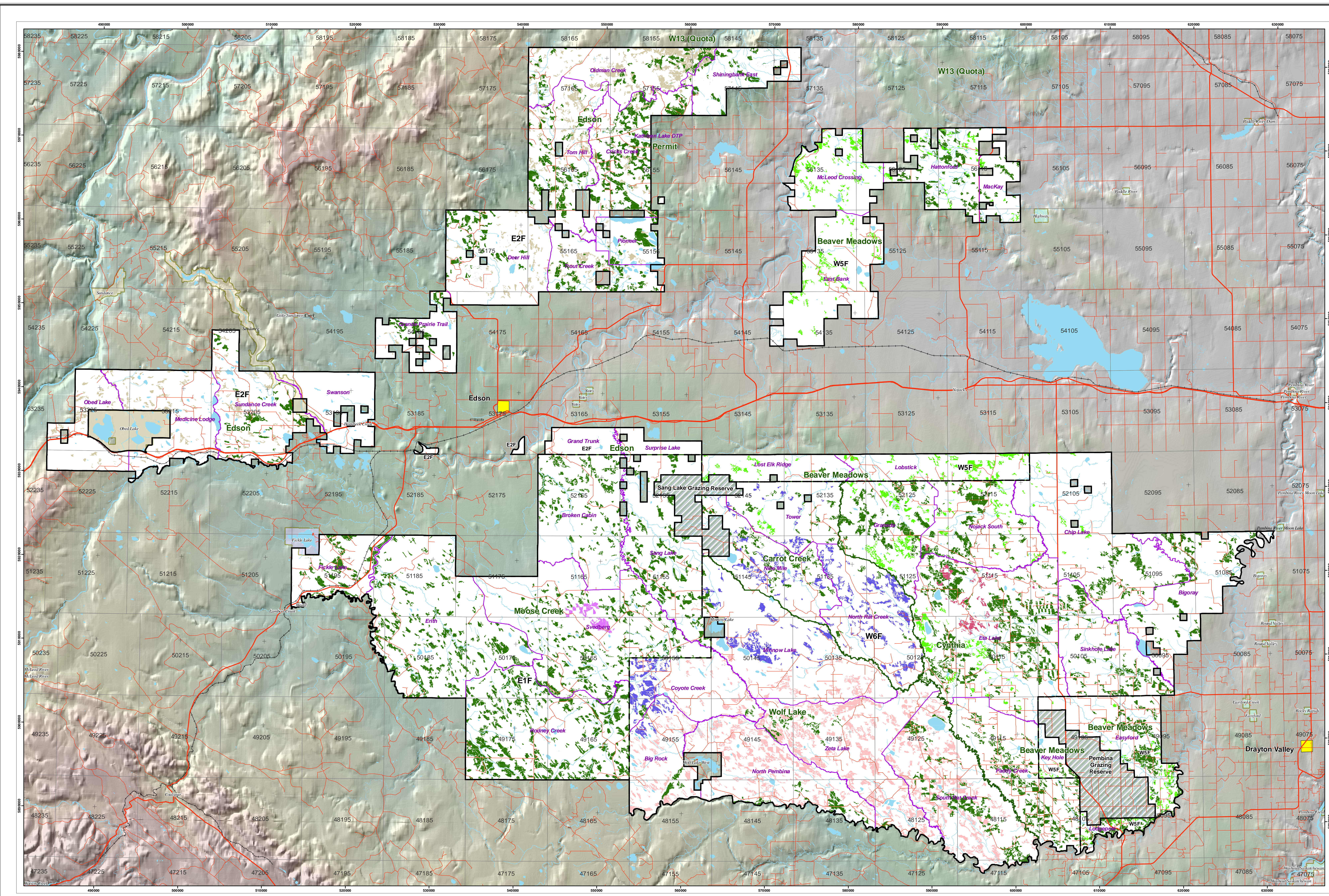



# SHS By Disposition Holder (Pd 1-3)



**FMU E1, E2, W5, W6**



**Weyerhaeuser  
Edson**

**SHS (Pd 1-3) By  
Disposition Holder**

**Legend**

**Base Features**

- FMA Boundary
- LMU Boundary
- Harvest Design Area
- Roads / Access
- Railway
- ATS
- Communities
- Lakes / Rivers
- Streams

**Protected Areas**

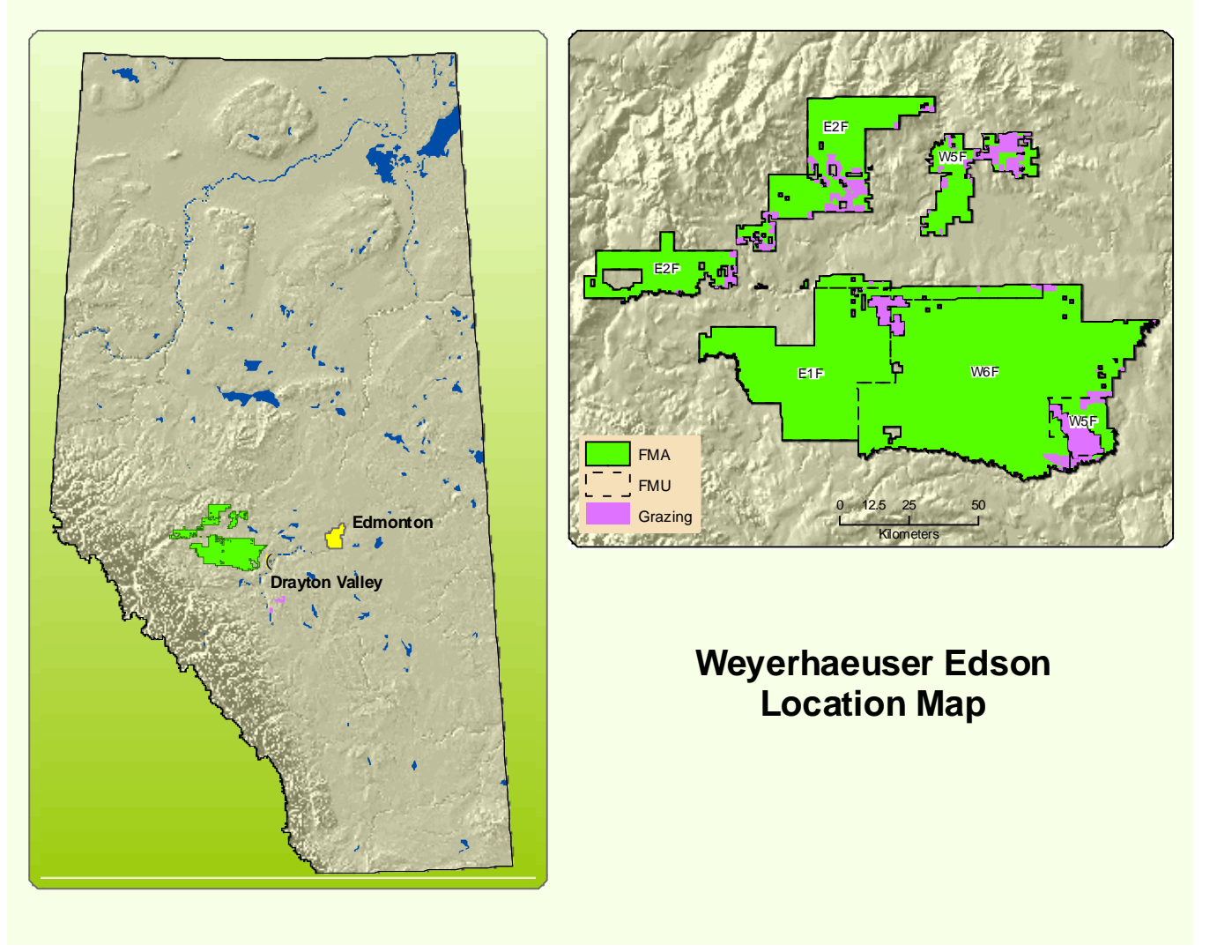
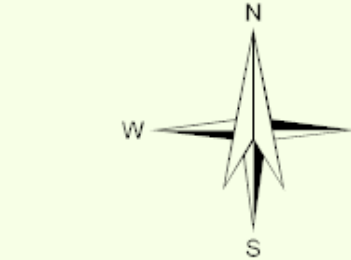
- PP - Provincial Park
- PRA - Provincial Recreation Area
- NA - Natural Area

**Grazing Reserves**

- Sang Lake & Pembina


**Disposition Holder**

- Alberta Newsprint Company
- Blue Ridge Lumber
- Cold Creek Timber Limited
- EDFOR
- Edson Timber Products
- MTU
- Millar Western Forest Products
- Weyerhaeuser
- Not Assigned

1:150,000 @ 50" X 28"  
1:350,000 @ 22" X 12"

Projection: UTM Zone 11 - Datum: NAD83 (CSRS)



Timberline Natural Resource Group  
Resource Analysis Department  
Edmonton, Alberta  
February 29, 2008