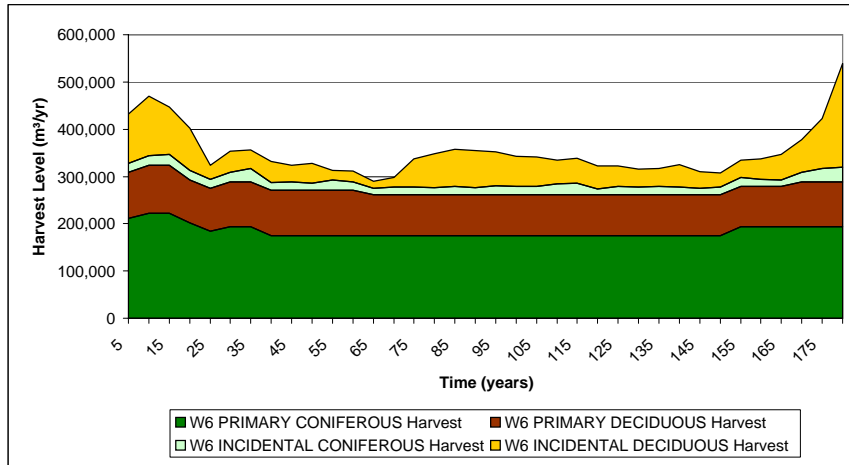
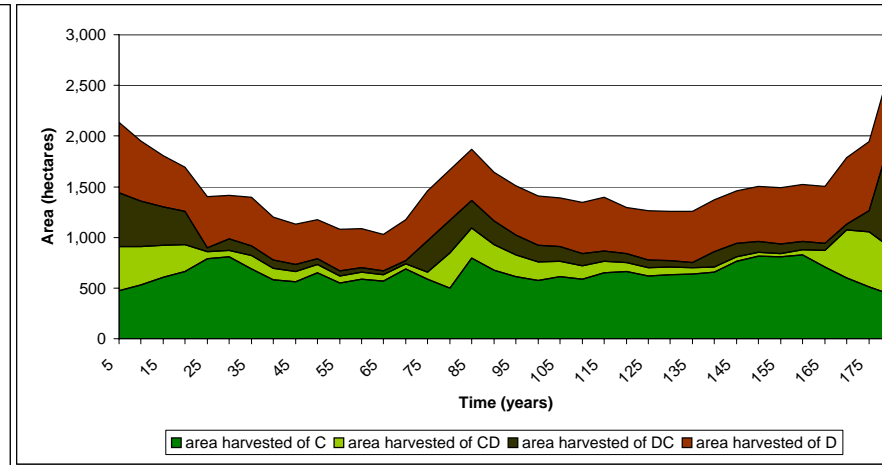


RUN411 Evenflow, smoothed out BCG harvest, min. growing stock level set, carryover cut over 20 years

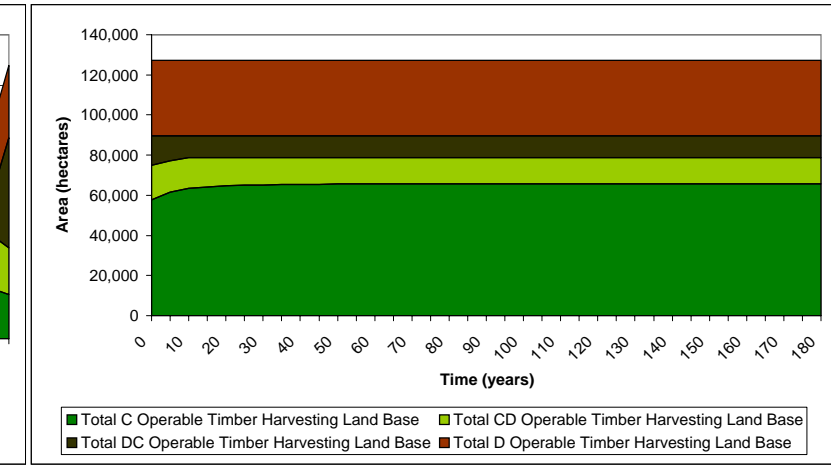
Annual Harvest Levels



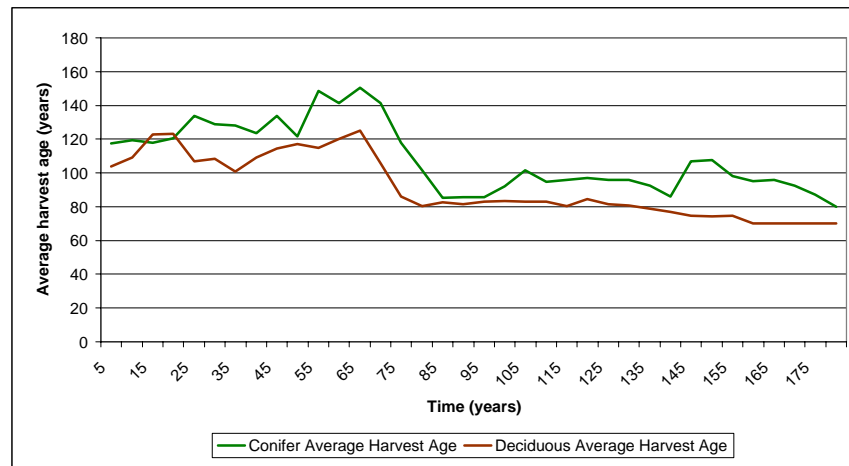
Annual area harvested in Broad Cover Type



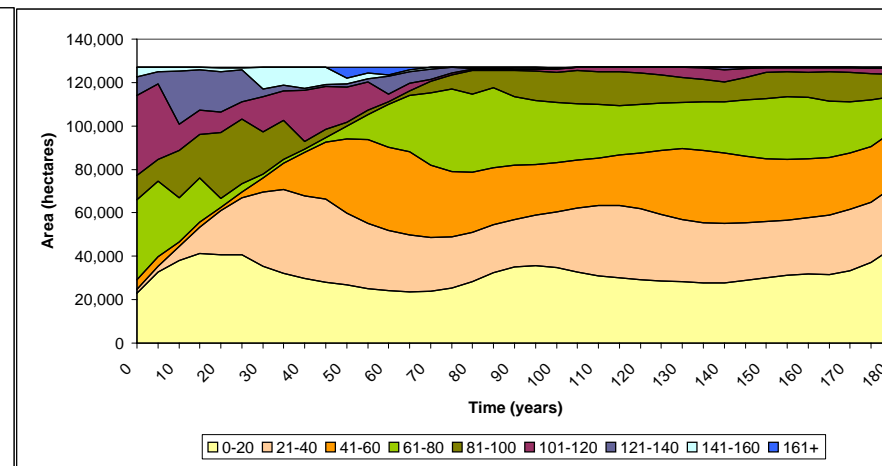
Area in Broad Cover Type



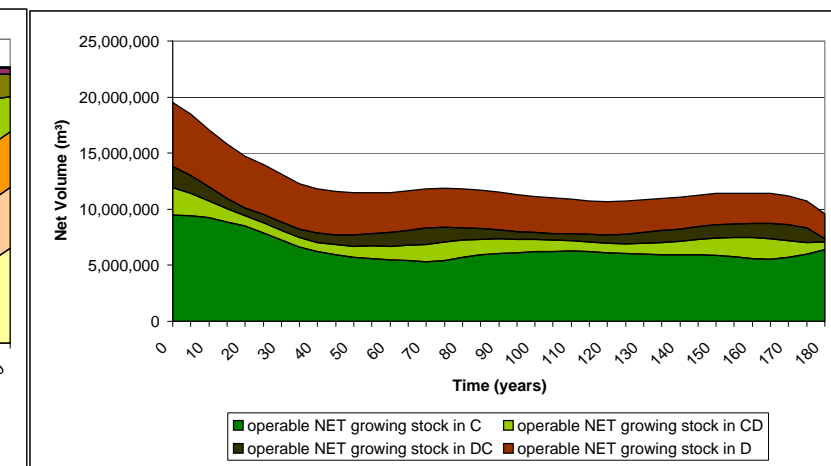
Average Harvest Age



Age Class Distribution



Operable Growing Stock

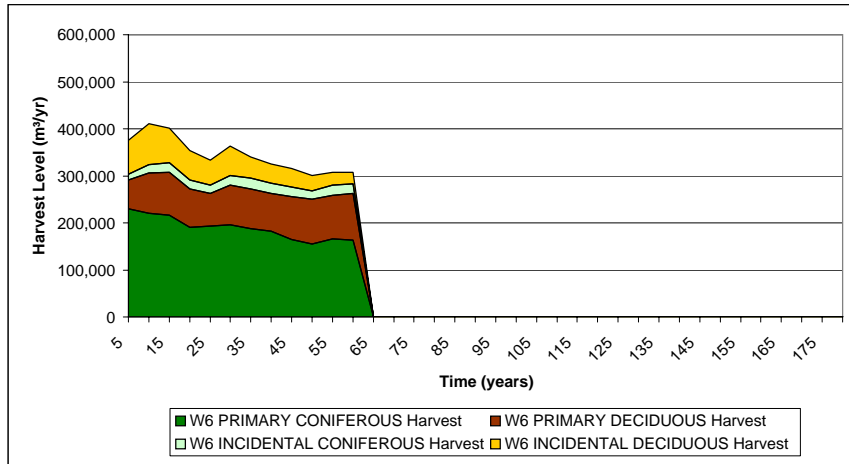


	Harvest Levels* (Net 15/11)			Proportion of Conifer Harvest to Total Harvest	Harvest Levels**				Harvest Levels by Operator			Percent Difference from 1996 AAC				
	Coniferous	Deciduous	Total		Primary Coniferous	Primary Deciduous	Incidental Coniferous	Incidental Deciduous	Quota Holders Conif	Weyerhaeuser Conif	Weyerhaeuser Decid	Weyerhaeuser Total	Quota Holders Conif	Weyerhaeuser Conif	Weyerhaeuser Decid	Weyerhaeuser Total
With 5% spatial reduction																
Years 1-60	184,588	131,709	316,297	58%	166,543	81,799	18,045	49,910	104,439	51,897	114,118	166,015	-26%	-6%	15%	8%
Without any spatial reduction (for comparison to Stanley results)																
Years 1-60	194,303	138,641	332,944	58%	175,309	86,104	18,994	52,537	109,936	56,115	121,050	177,165	-22%	1%	22%	15%

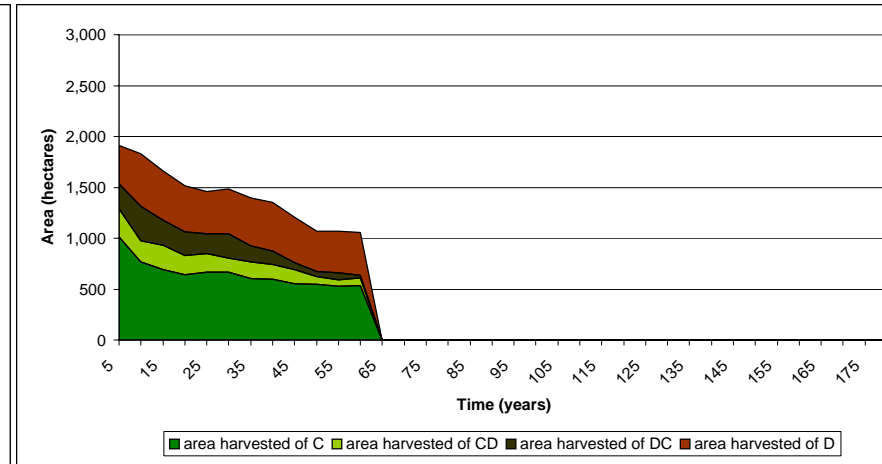
* All harvest levels are Woodstock levels reduced by within block retention (3%) and cull (3% conif, 7% decid)

** Primary and incidental harvest levels are determined by averaging the harvest of the first 60 years. Primary conifer is coniferous harvest from C, CD, and DC stands. Primary decid is deciduous harvest from D stands.

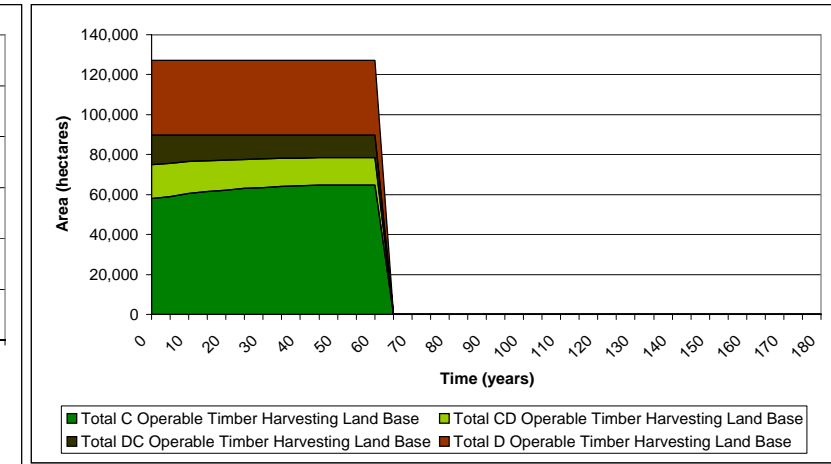
Annual Harvest Levels



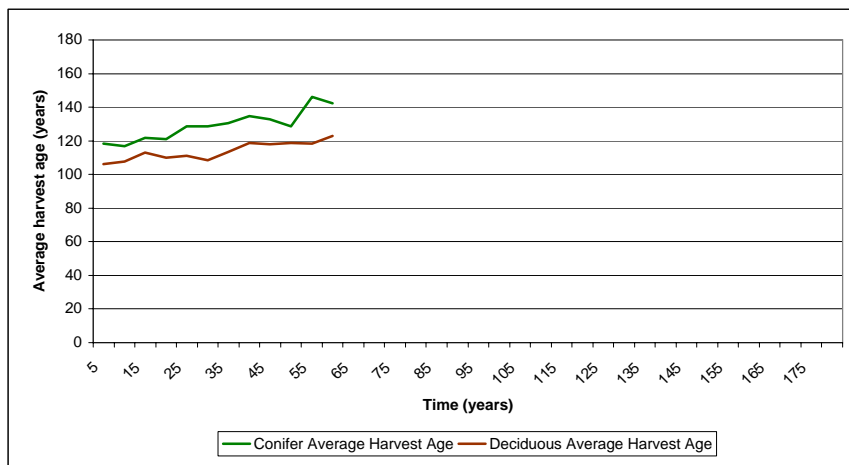
Annual area harvested in Broad Cover Type



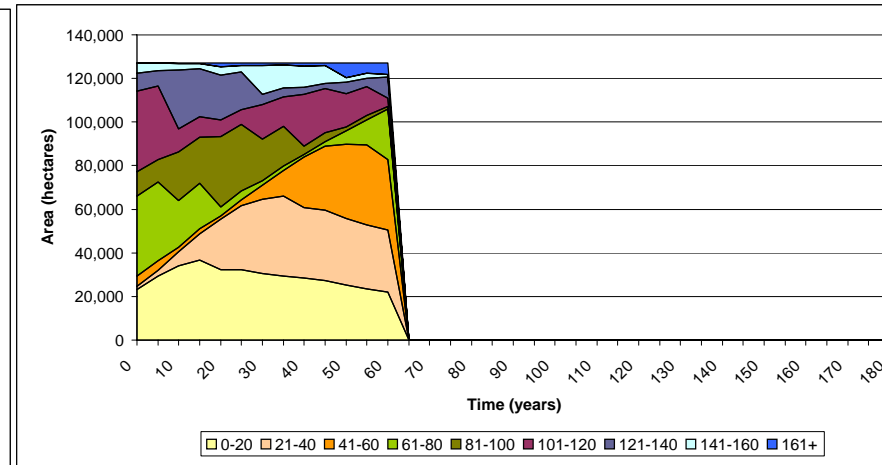
Area in Broad Cover Type



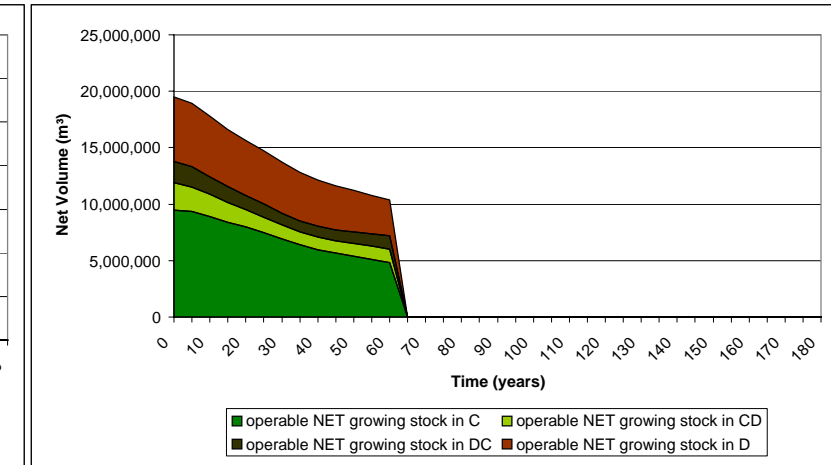
Average Harvest Age



Age Class Distribution



Operable Growing Stock



Years 1-60	Harvest Levels* (Net 15/11)			Proportion of Conifer Harvest to Total Harvest	Harvest Levels**				Harvest Levels by Operator			Percent Difference from 1996 AAC				
	Coniferous	Deciduous	Total		Primary Coniferous	Primary Deciduous	Incidental Coniferous	Incidental Deciduous	Quota Holders Conif	Weyerhaeuser		Quota Holders Conif	Weyerhaeuser		Total	
	190,276	121,255	311,531	61%	172,282	74,662	17,994	46,593	108,038	53,986	103,664	157,650	-23%	-2%	5%	2%

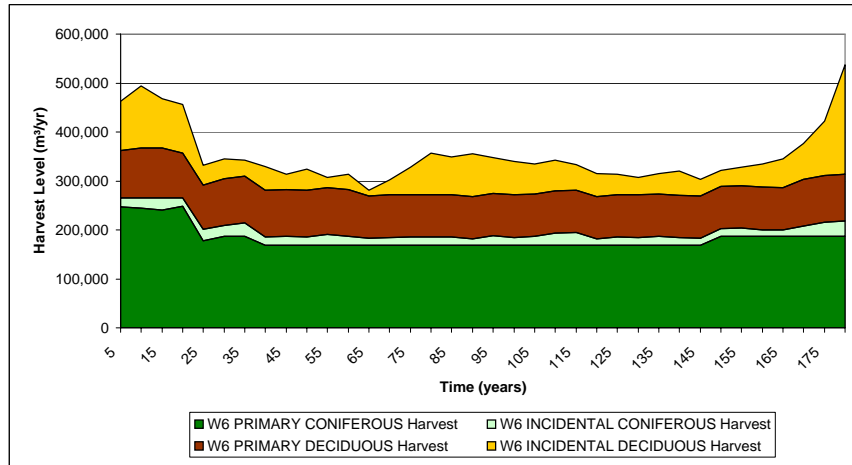
* All harvest levels are Stanley levels reduced by within block retention (3%) and cull (3% conif, 7% decid)

** Primary and incidental harvest levels are determined by averaging the harvest of the first 60 years. Primary conifer is coniferous harvest from C, CD, and DC stands. Primary decid is deciduous harvest from D stands.

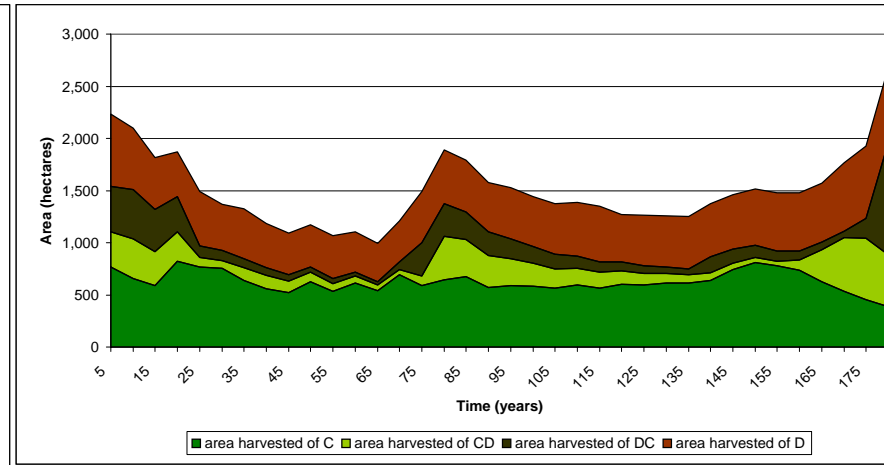
Woodstock Detailed Results - Divided Landbase

RUN476 20 year surge cut for conifer, smoothed out BCG harvest, conifer surge cut between 200-220,000 m³/yr, min. growing stock level set, carryover cut over 20 years

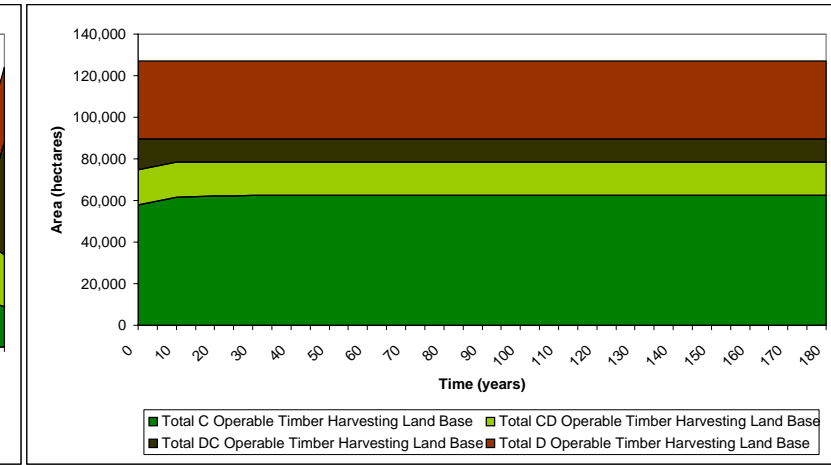
Annual Harvest Levels



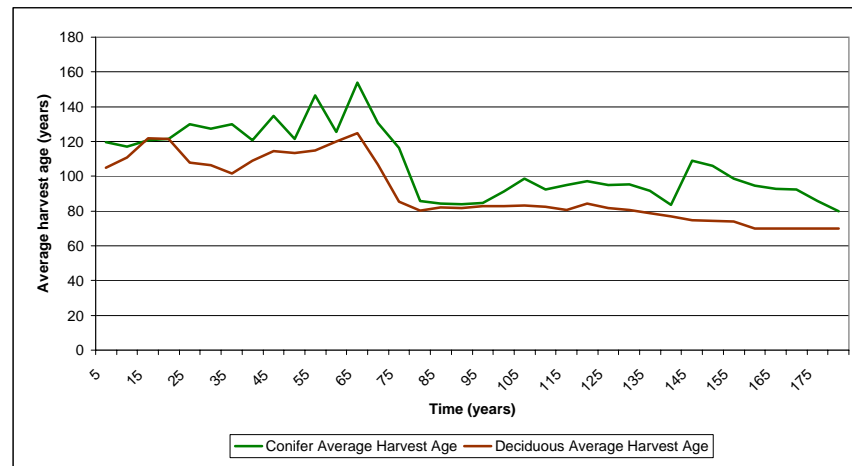
Annual area harvested in Broad Cover Type



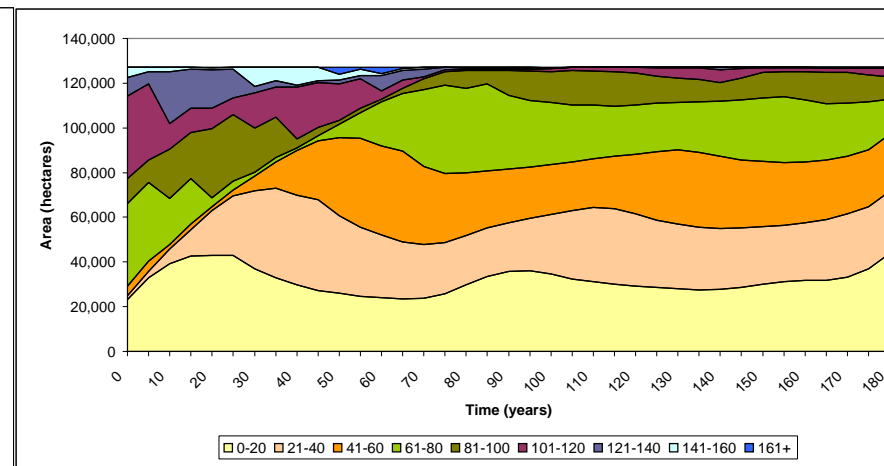
Area in Broad Cover Type



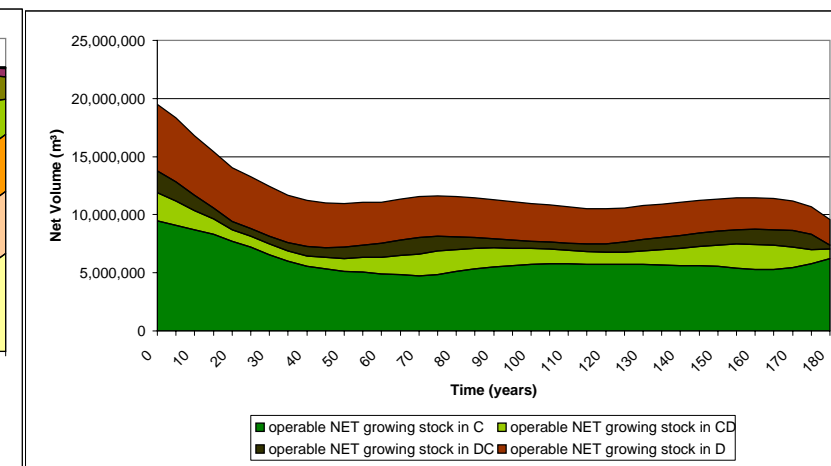
Average Harvest Age



Age Class Distribution



Operable Growing Stock

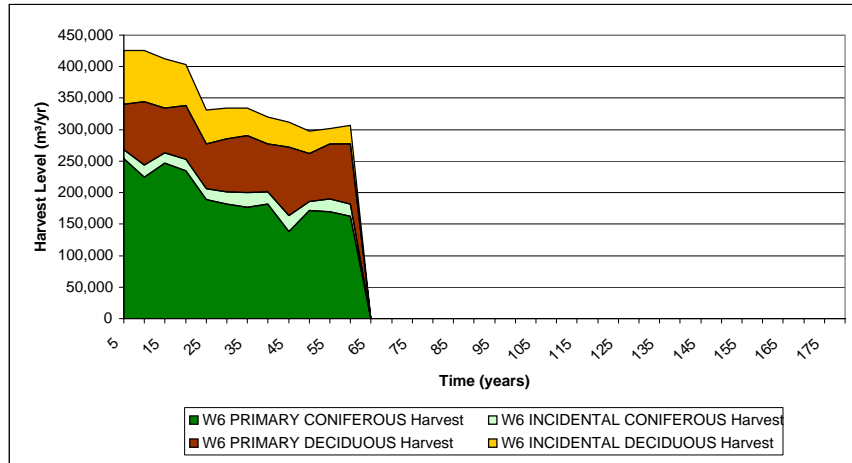


	Harvest Levels* (Net 15/11)			Proportion of Conifer Harvest to Total Harvest	Harvest Levels**				Harvest Levels by Operator			Percent Difference from 1996 AAC				
	Coniferous	Deciduous	Total		Primary Coniferous	Primary Deciduous	Incidental Coniferous	Incidental Deciduous	Quota Holders Conif	Weyerhaeuser Conif	Weyerhaeuser Decid	Total	Quota Holders Conif	Weyerhaeuser Conif	Weyerhaeuser Decid	Total
With 5% spatial reduction																
Years 1-20	221,676	174,775	396,451	56%	204,262	83,103	17,414	91,672	128,093	65,331	157,184	222,515	-9%	18%	59%	44%
Years 21-60	174,303	112,154	286,456	61%	155,838	81,319	18,465	30,835	97,726	48,325	94,563	142,888	-30%	-13%	-5%	-7%
Without any spatial reduction (for comparison to Stanley results)																
Years 1-20	233,343	183,974	417,317	56%	215,013	87,477	18,330	96,497	134,835	70,257	166,383	236,639	-4%	27%	68%	53%
Years 21-60	183,476	118,057	301,533	61%	164,040	85,599	19,437	32,458	102,869	52,355	100,466	152,821	-27%	-5%	1%	-1%

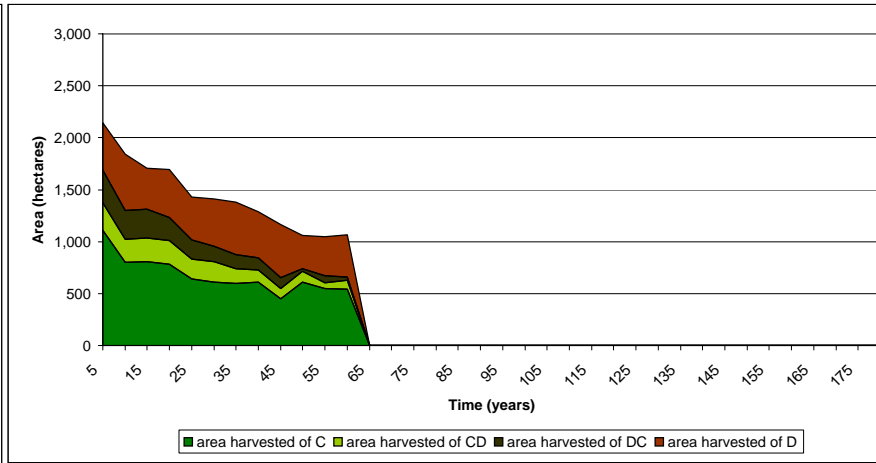
* All harvest levels are Woodstock levels reduced by spatial considerations (5%), within block retention (3%) and cull (3% conif, 7% decid)

** Primary and incidental harvest levels are determined by averaging the harvest of the first 60 years. Primary conifer is coniferous harvest from C, CD, and DC stands. Primary decid is deciduous harvest from D stands.

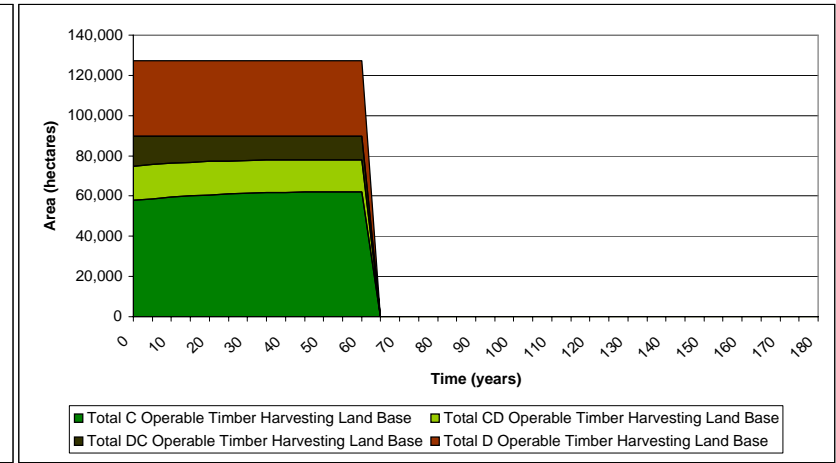
Annual Harvest Levels



Annual area harvested in Broad Cover Type



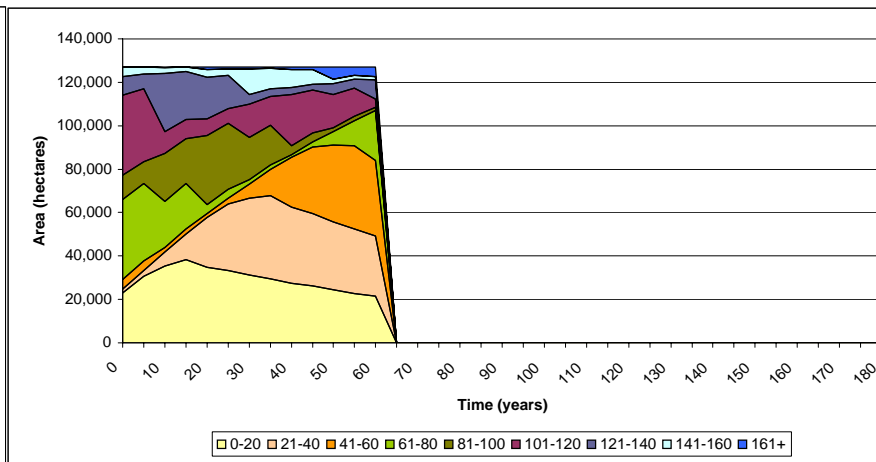
Area in Broad Cover Type



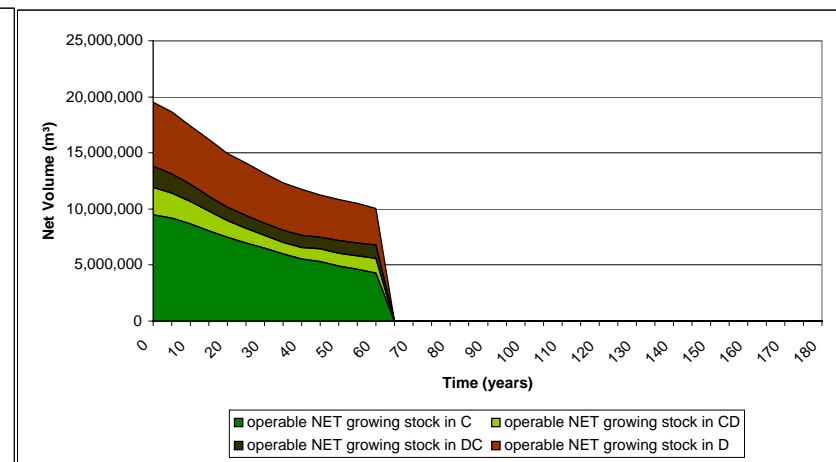
Average Harvest Age



Age Class Distribution



Operable Growing Stock



	Harvest Levels* (Net 15/11)			Proportion of Conifer Harvest to Total Harvest	Harvest Levels**				Harvest Levels by Operator			Percent Difference from 1996 AAC				
	Coniferous	Deciduous	Total		Primary	Incidental	Quota Holders	Weyerhaeuser		Quota Holders	Weyerhaeuser					
					Coniferous	Deciduous	Coniferous	Deciduous	Conif	Conif	Decid	Total	Conif	Conif	Decid	Total
Years 1-20	226,120	142,671	368,791	61%	209,841	72,826	16,279	69,846	131,591	66,276	125,080	191,357	-6%	20%	26%	24%
Years 21-60	180,017	113,511	293,528	61%	161,317	77,782	18,700	35,729	101,162	50,603	95,920	146,523	-28%	-9%	-3%	-5%

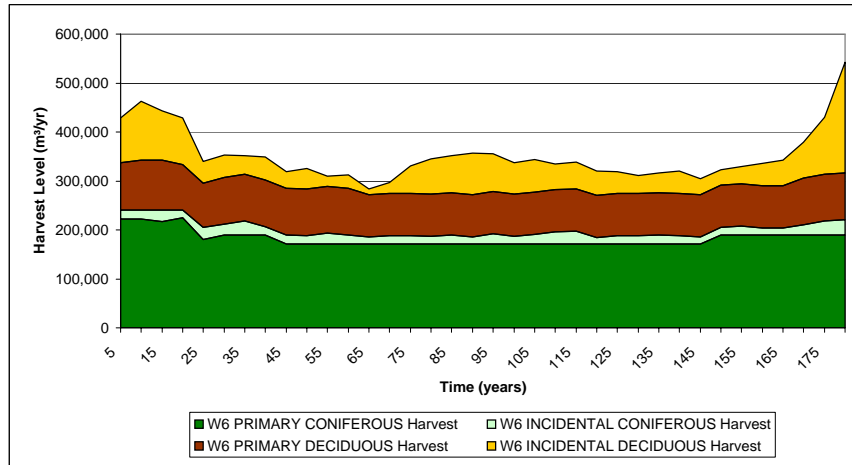
* All harvest levels are reduced by spatial considerations, within block retention, and cull

** Primary and incidental harvest levels are determined by averaging the harvest of the first 60 years. Primary conifer is coniferous harvest from C, CD, and DC stands. Primary decid is deciduous harvest from D stands.

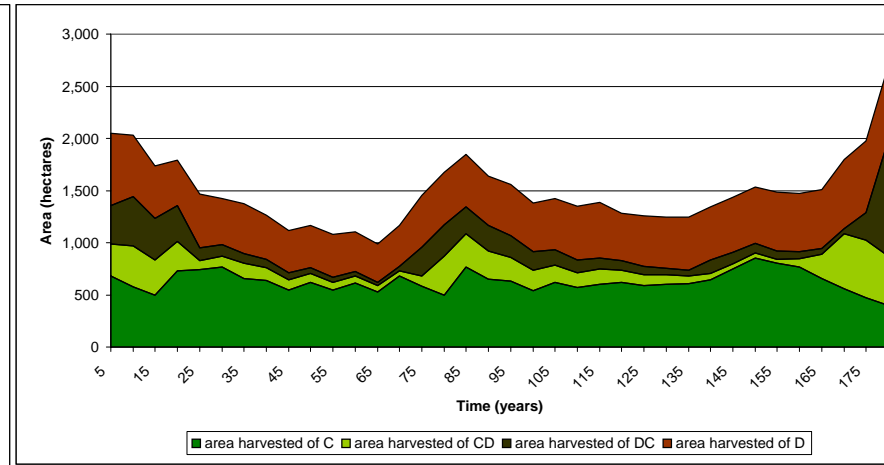
Woodstock Detailed Results - Divided Landbase

RUN477 20 year surge cut for conifer, smoothed out BCG harvest, conifer surge cut between 190-200,000 m³/yr, min. growing stock level set, carryover cut over 20 years

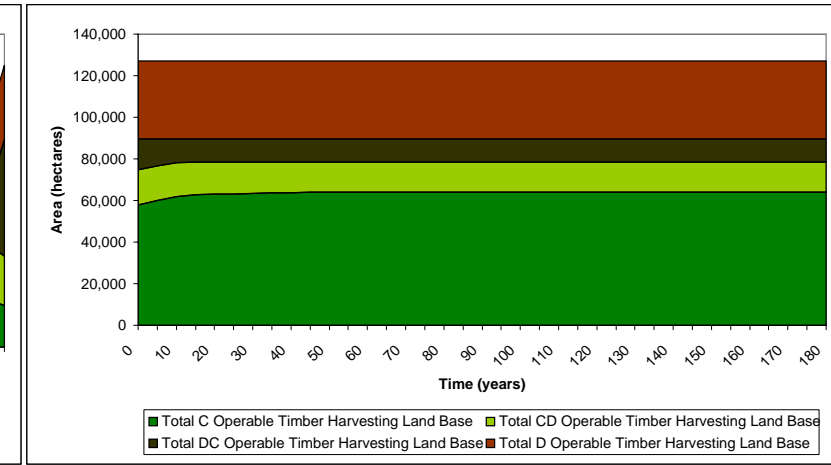
Annual Harvest Levels



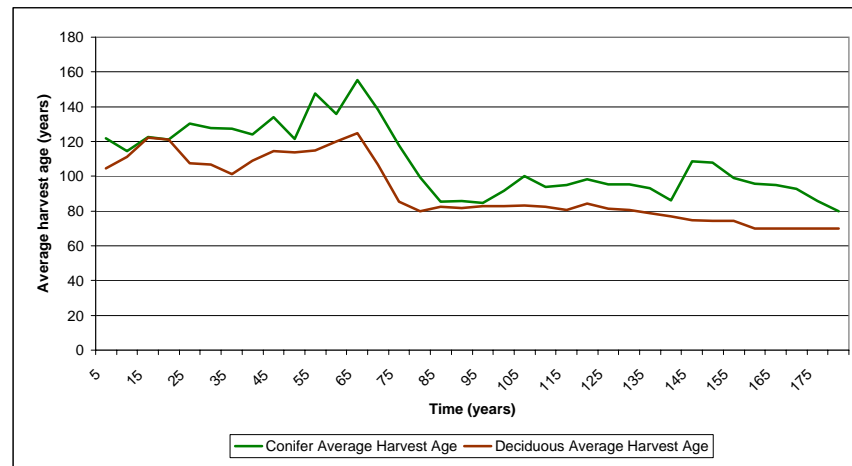
Annual area harvested in Broad Cover Type



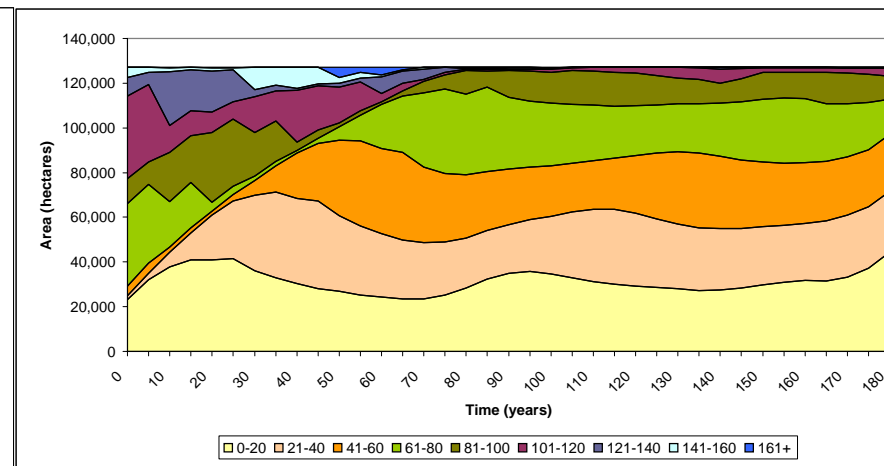
Area in Broad Cover Type



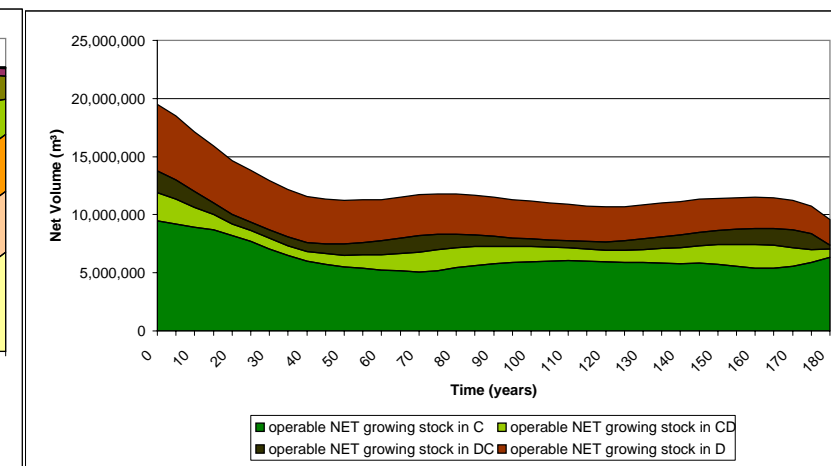
Average Harvest Age



Age Class Distribution



Operable Growing Stock

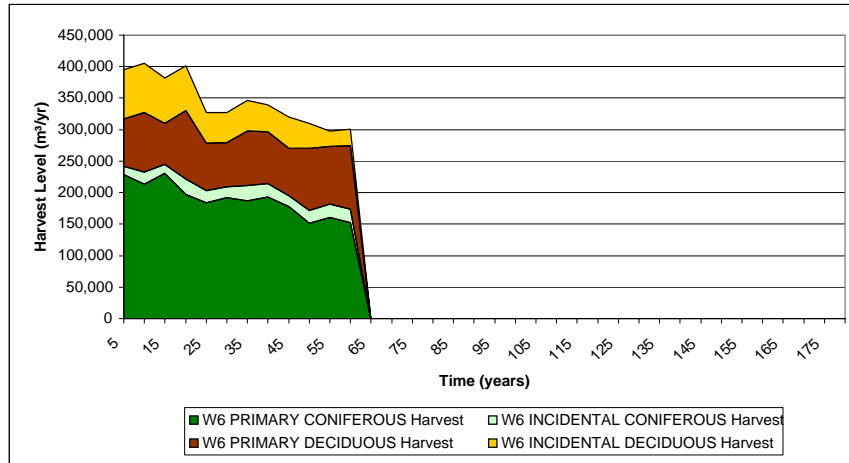


	Harvest Levels* (Net 15/11)			Proportion of Conifer Harvest to Total Harvest	Harvest Levels**				Harvest Levels by Operator			Percent Difference from 1996 AAC				
	Coniferous	Deciduous	Total		Primary Coniferous	Primary Deciduous	Incidental Coniferous	Incidental Deciduous	Quota Holders Conif	Weyerhaeuser Conif	Weyerhaeuser Decid	Total	Quota Holders Conif	Weyerhaeuser Conif	Weyerhaeuser Decid	Total
With 5% spatial reduction																
Years 1-20	200,224	170,221	370,445	54%	182,921	83,111	17,303	87,110	114,710	57,262	152,630	209,892	-18%	4%	54%	36%
Years 21-60	178,981	113,447	292,428	61%	160,471	81,327	18,510	32,120	100,631	50,098	95,856	145,954	-28%	-9%	-3%	-5%
Without any spatial reduction (for comparison to Stanley results)																
Years 1-20	210,762	179,180	389,942	54%	192,548	87,486	18,213	91,694	120,747	61,763	161,589	223,352	-14%	12%	63%	45%
Years 21-60	188,401	119,418	307,819	61%	168,917	85,608	19,484	33,810	105,928	54,221	101,827	156,048	-25%	-2%	3%	1%

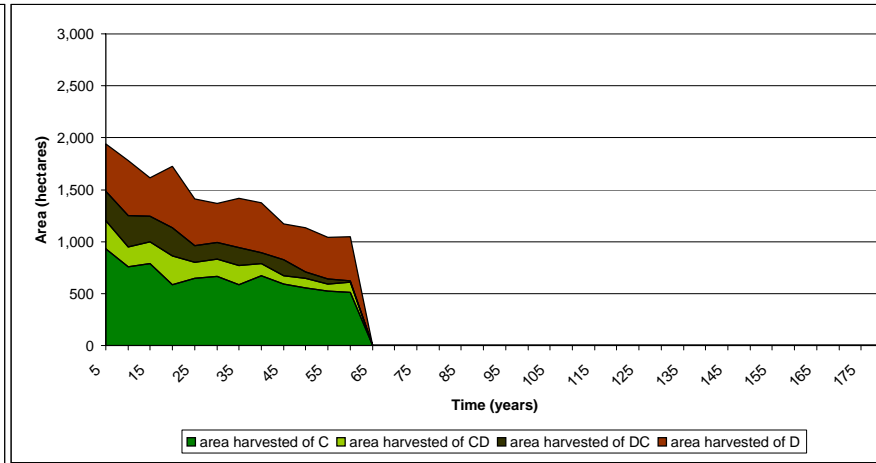
* All harvest levels are Woodstock levels reduced by spatial considerations (5%), within block retention (3%) and cull (3% conif, 7% decid)

** Primary and incidental harvest levels are determined by averaging the harvest of the first 60 years. Primary conifer is coniferous harvest from C, CD, and DC stands. Primary decid is deciduous harvest from D stands.

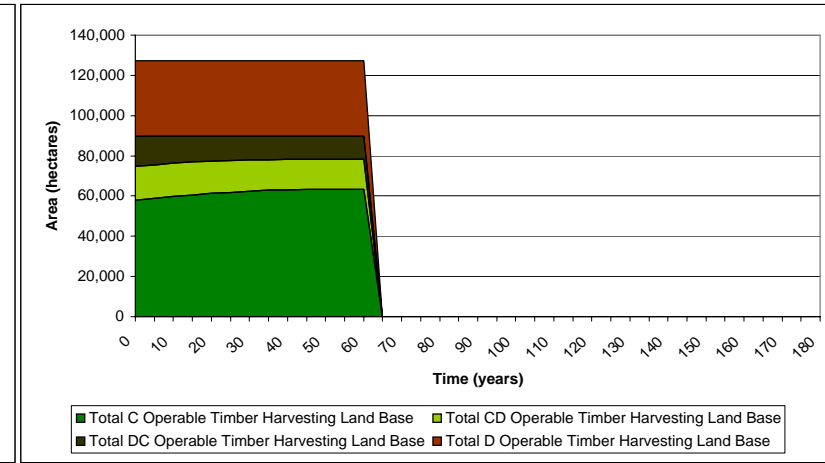
Annual Harvest Levels



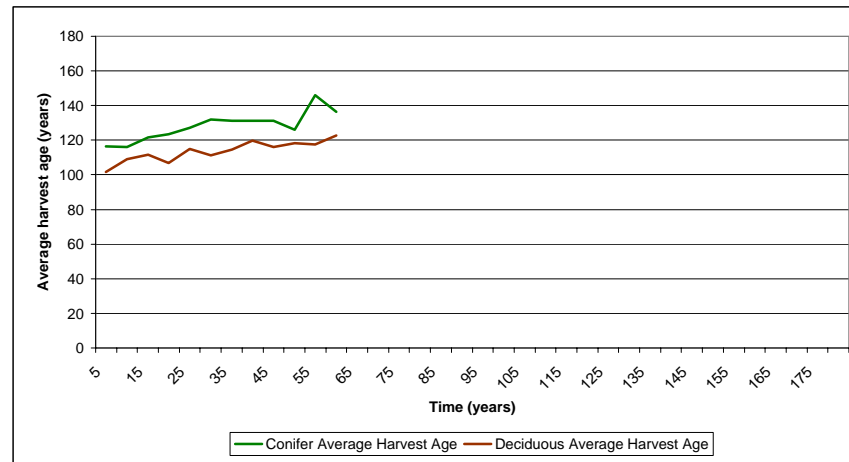
Annual area harvested in Broad Cover Type



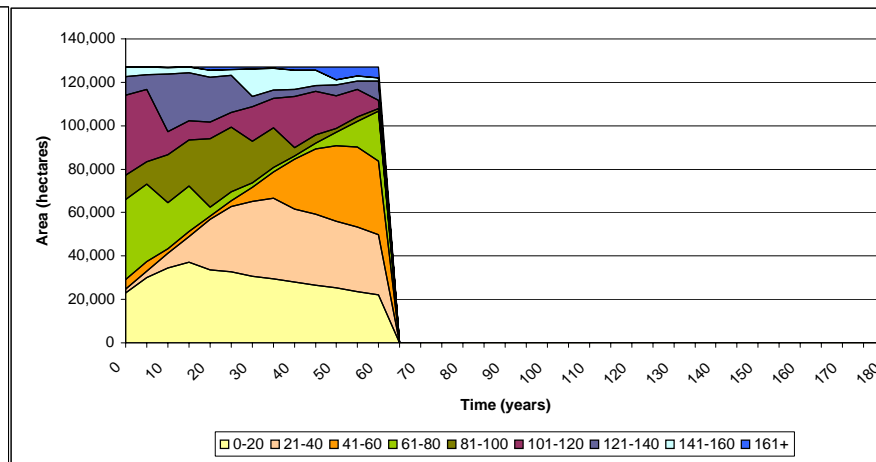
Area in Broad Cover Type



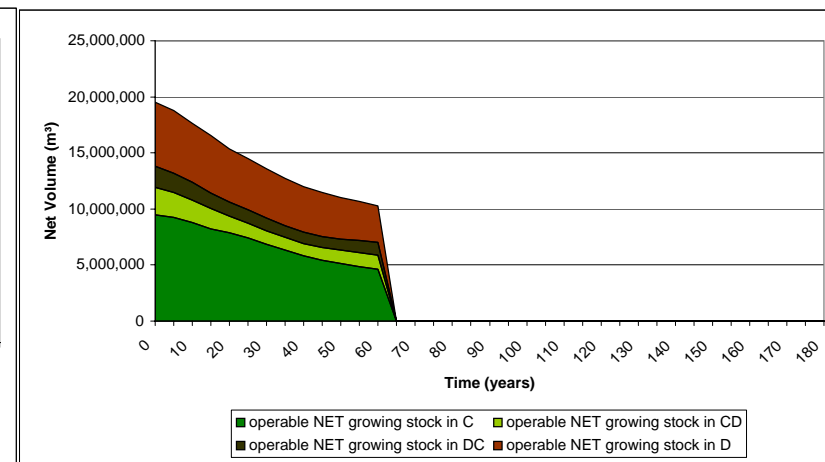
Average Harvest Age



Age Class Distribution



Operable Growing Stock



	Harvest Levels* (Net 15/11)			Proportion of Conifer Harvest to Total Harvest	Harvest Levels**				Harvest Levels by Operator			Percent Difference from 1996 AAC				
	Coniferous	Deciduous	Total		Primary	Incidental	Quota Holders	Weyerhaeuser		Quota Holders	Weyerhaeuser					
					Coniferous	Deciduous	Coniferous	Deciduous	Conif	Conif	Decid	Total	Conif	Conif	Decid	Total
Years 1-20	205,482	143,837	349,319	59%	188,611	75,899	16,870	67,939	118,278	58,952	126,246	185,198	-16%	7%	27%	20%
Years 21-60	183,154	113,991	297,145	62%	164,567	76,897	18,587	37,094	103,200	51,702	96,400	148,102	-27%	-7%	-3%	-4%

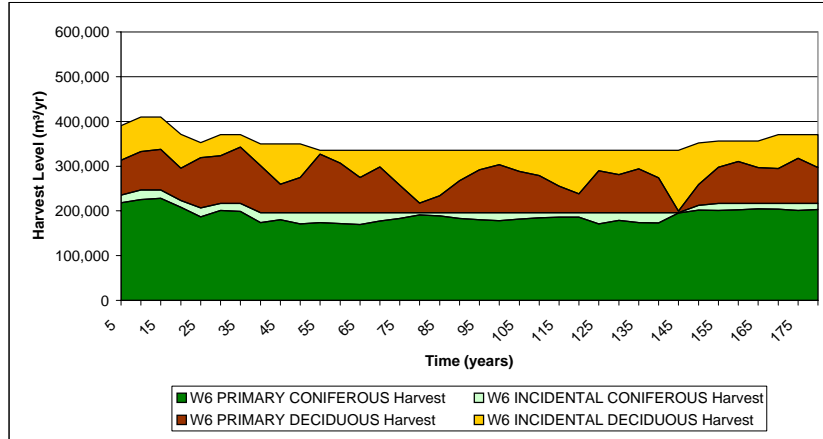
* All harvest levels are reduced by spatial considerations, within block retention, and cull

** Primary and incidental harvest levels are determined by averaging the harvest of the first 60 years. Primary conifer is coniferous harvest from C, CD, and DC stands. Primary decid is deciduous harvest from D stands.

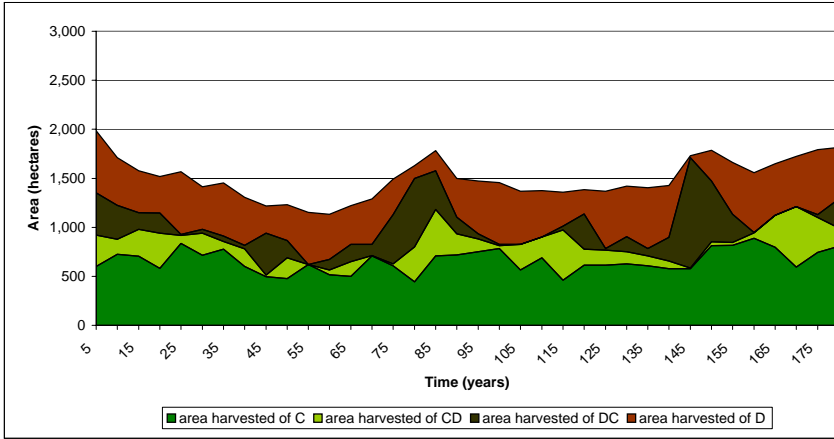
Woodstock Detailed Results - Combined Landbase

RUN211 Evenflow, min. growing stock level set, carryover cut over 20 years

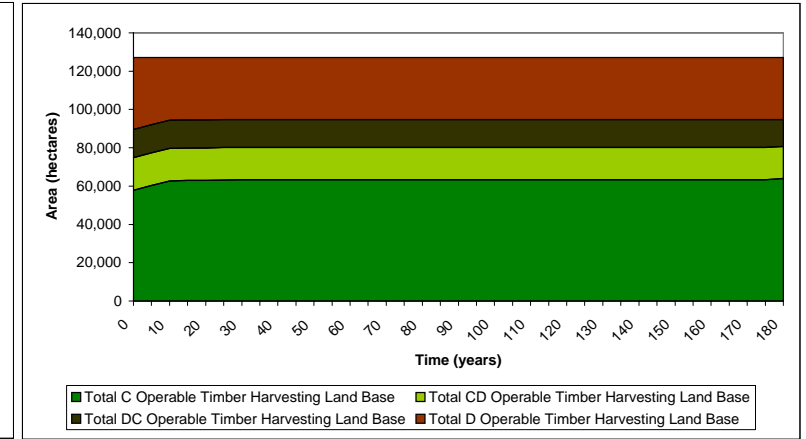
Annual Harvest Levels



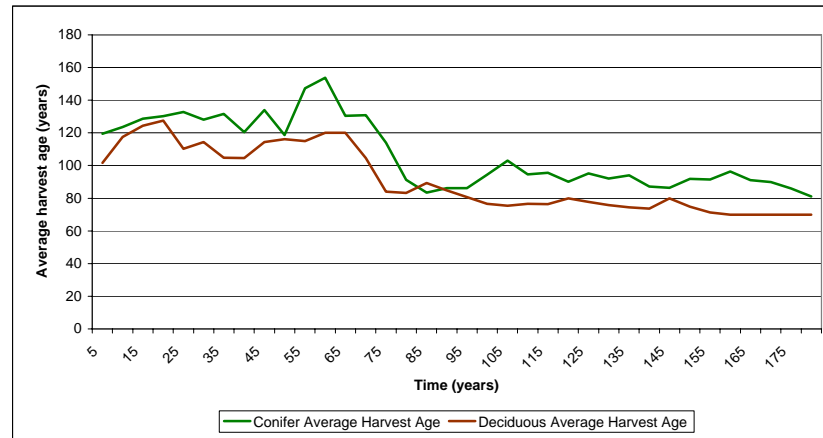
Annual area harvested in Broad Cover Type



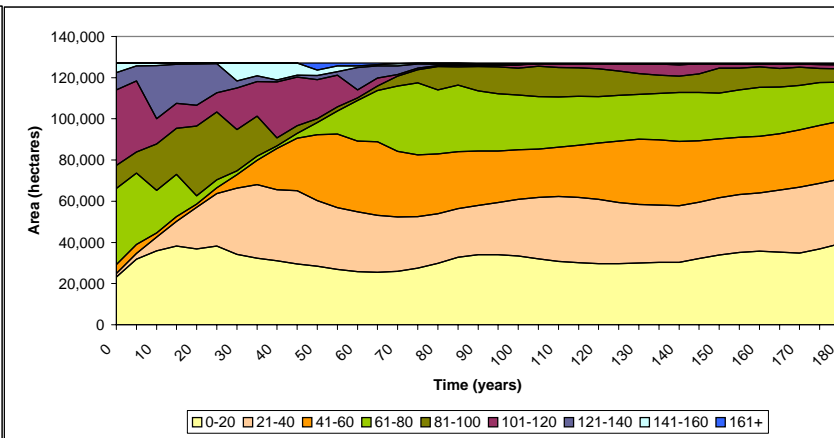
Area in Broad Cover Type



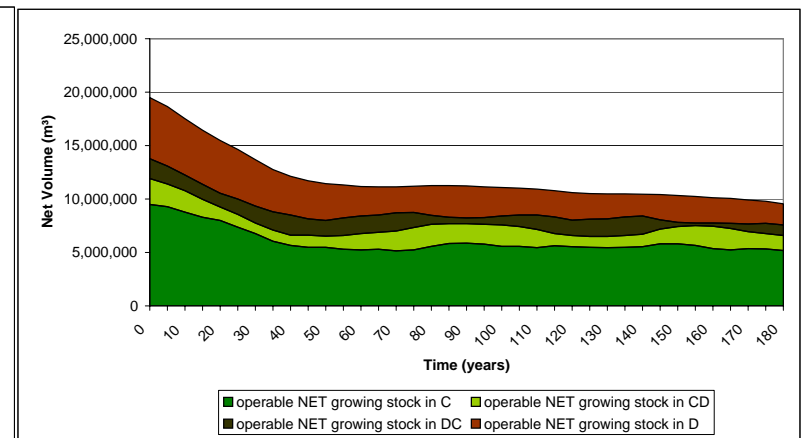
Average Harvest Age



Age Class Distribution



Operable Growing Stock

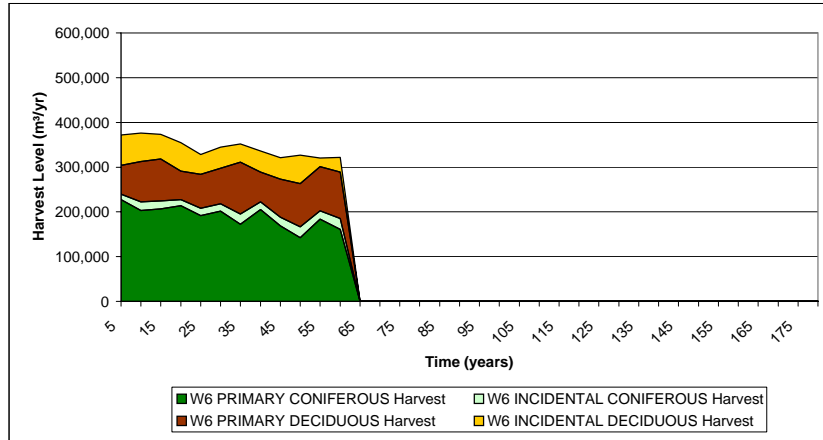


	Harvest Levels* (Net 15/11)			Proportion of Conifer Harvest to Total Harvest	Harvest Levels**				Harvest Levels by Operator			Percent Difference from 1996 AAC				
	Coniferous	Deciduous	Total		Primary Coniferous	Primary Deciduous	Incidental Coniferous	Incidental Deciduous	Quota Holders Conif	Weyerhaeuser Conif	Weyerhaeuser Decid	Total	Quota Holders Conif	Weyerhaeuser Conif	Weyerhaeuser Decid	Total
With 5% spatial reduction Years 1-60	186,545	129,878	316,423	59%	168,943	82,527	17,602	47,350	105,944	52,349	112,287	164,636	-25%	-5%	13%	7%
Without any spatial reduction (for comparison to Stanley results) Years 1-60	196,363	136,713	333,077	59%	177,835	86,871	18,529	49,842	111,520	56,591	119,122	175,714	-21%	2%	20%	14%

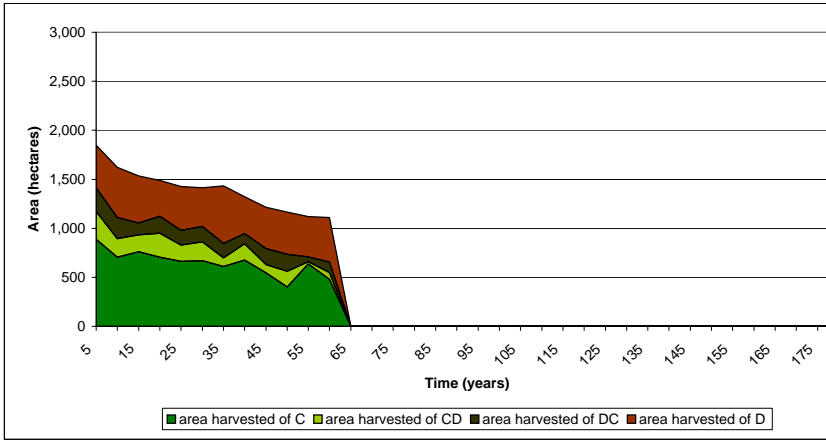
* All harvest levels are Woodstock levels reduced within block retention (3%) and cull (3% conif, 7% decid)

** Primary and incidental harvest levels are determined by averaging the harvest of the first 60 years. Primary conifer is coniferous harvest from C, CD, and DC stands. Primary decid is deciduous harvest from D stands.

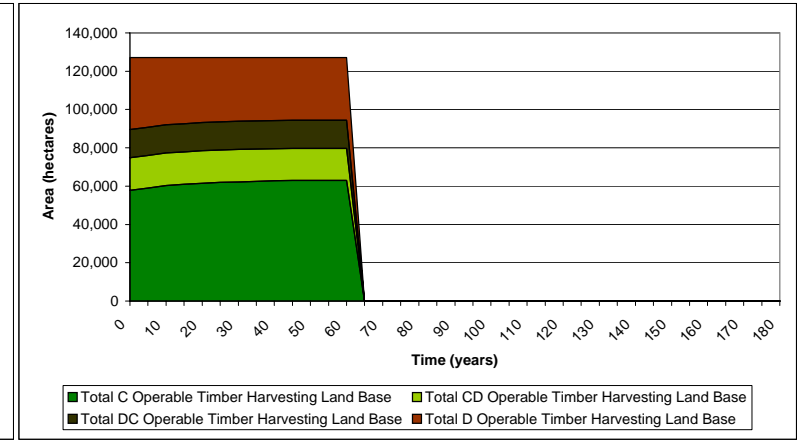
Annual Harvest Levels



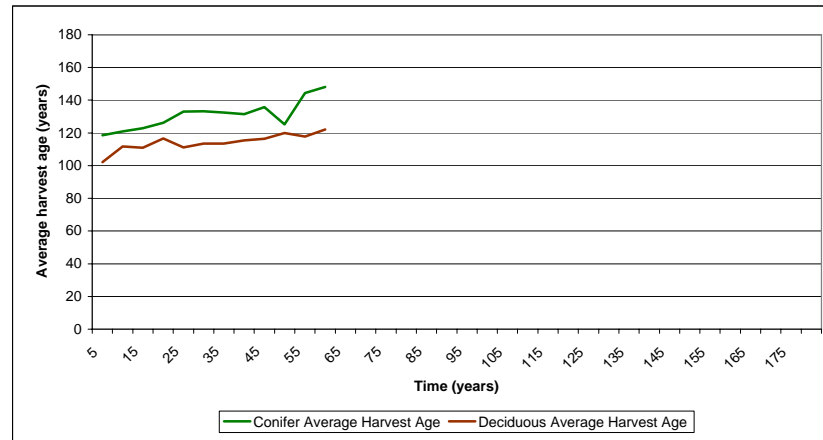
Annual area harvested in Broad Cover Type



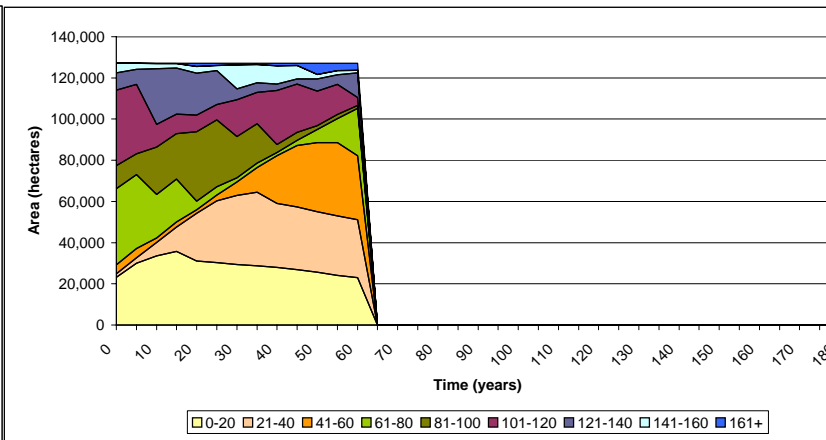
Area in Broad Cover Type



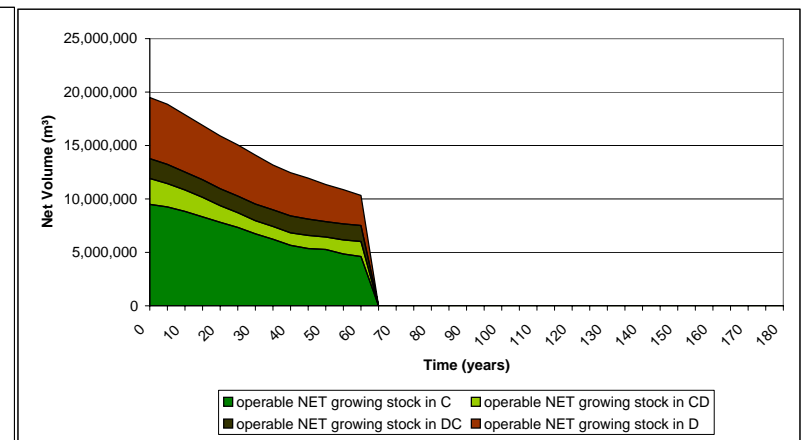
Average Harvest Age



Age Class Distribution



Operable Growing Stock



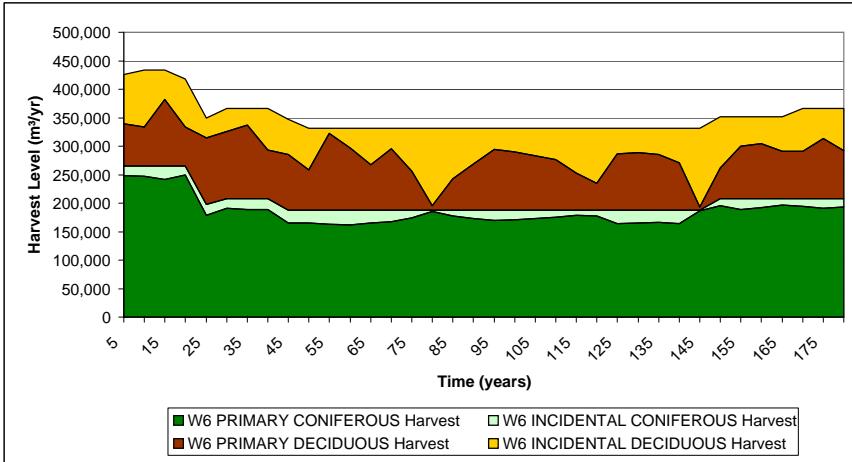
Years 1-60	Harvest Levels* (Net 15/11)			Proportion of Conifer Harvest to Total Harvest	Harvest Levels**				Harvest Levels by Operator			Percent Difference from 1996 AAC				
	Coniferous	Deciduous	Total		Primary	Incidental	Quota Holders	Weyerhaeuser		Quota Holders	Weyerhaeuser					
	Coniferous	Deciduous	Total	Coniferous	Deciduous	Coniferous	Deciduous	Conif	Conif	Decid	Total	Conif	Conif	Decid	Total	
Years 1-60	190,681	121,915	312,596	61%	173,307	77,443	17,374	44,472	108,681	53,748	104,324	158,072	-23%	-3%	5%	2%

* All harvest levels are Stanley levels reduced by within block retention (3%) and cull (3% conifer, 7% decid)

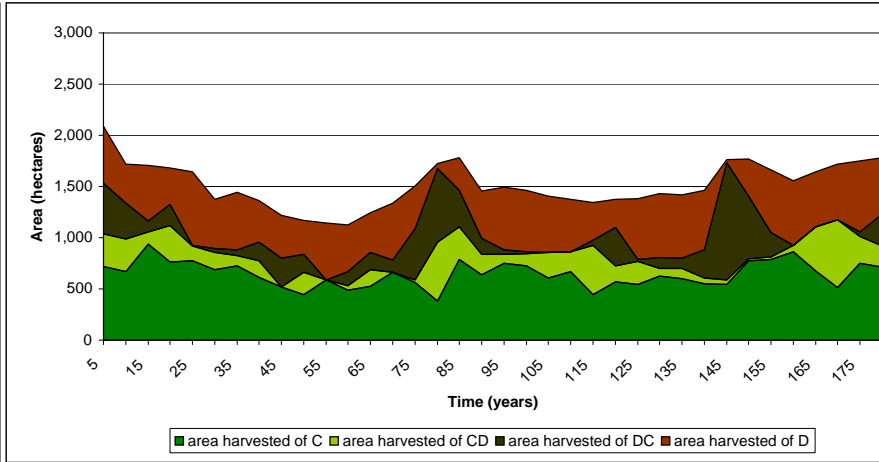
** Primary and incidental harvest levels are determined by averaging the harvest of the first 60 years. Primary conifer is coniferous harvest from C, CD, and DC stands. Primary decid is deciduous harvest from D stands.

RUN276 20-year surge cut for coniferous, conifer surge cut between 200-220,000 m³/yr, min. growing stock level set, carryover cut over 20 years

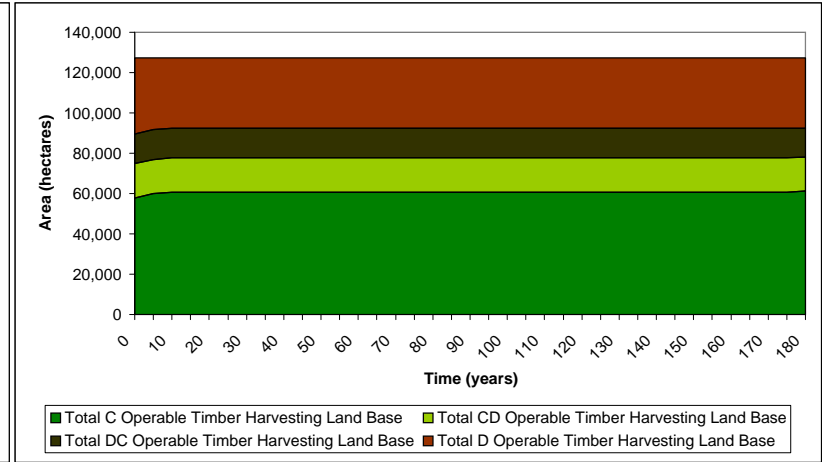
Annual Harvest Levels



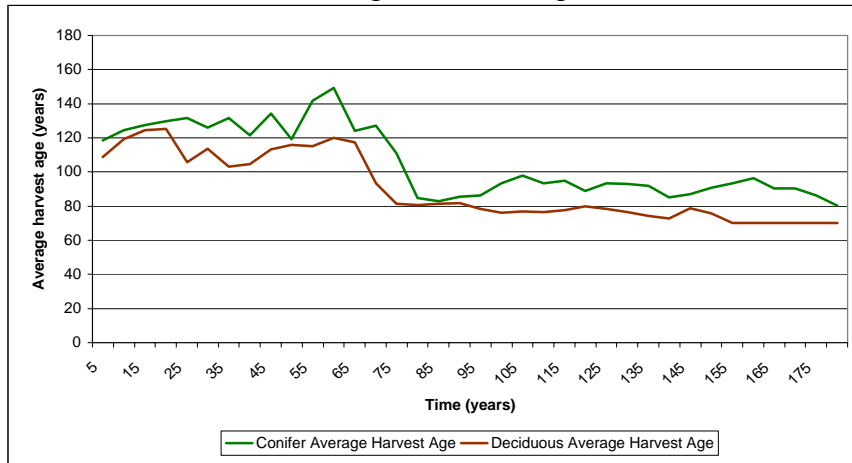
Annual area harvested in Broad Cover Type



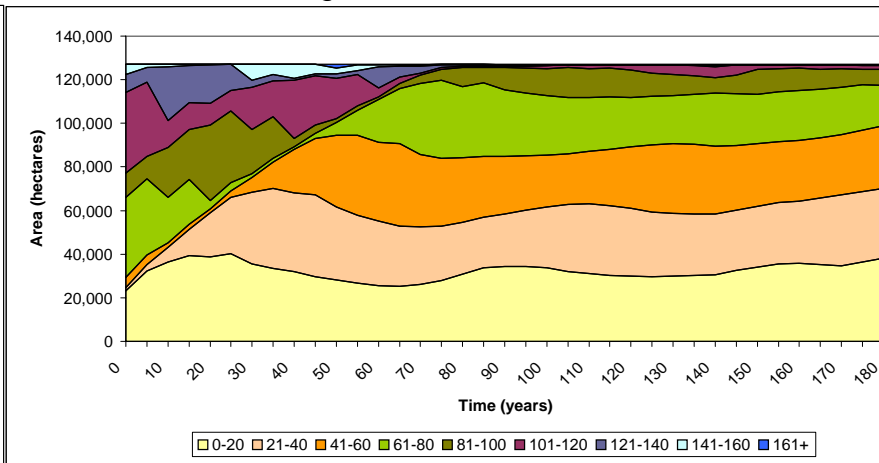
Area in Broad Cover Type



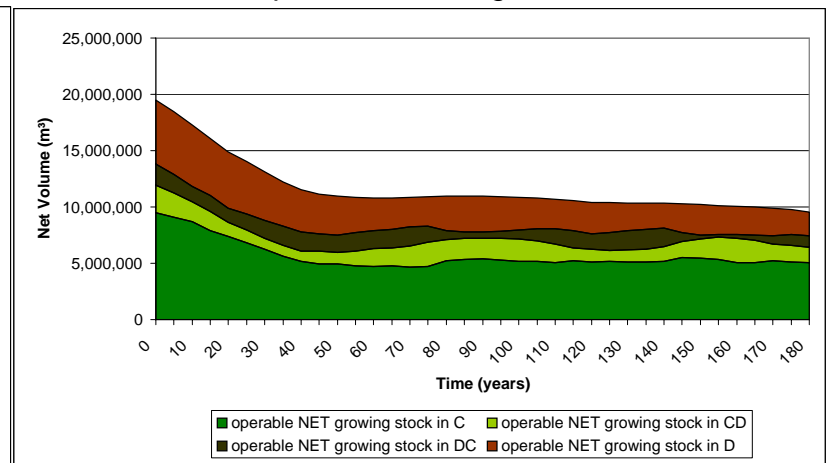
Average Harvest Age



Age Class Distribution



Operable Growing Stock

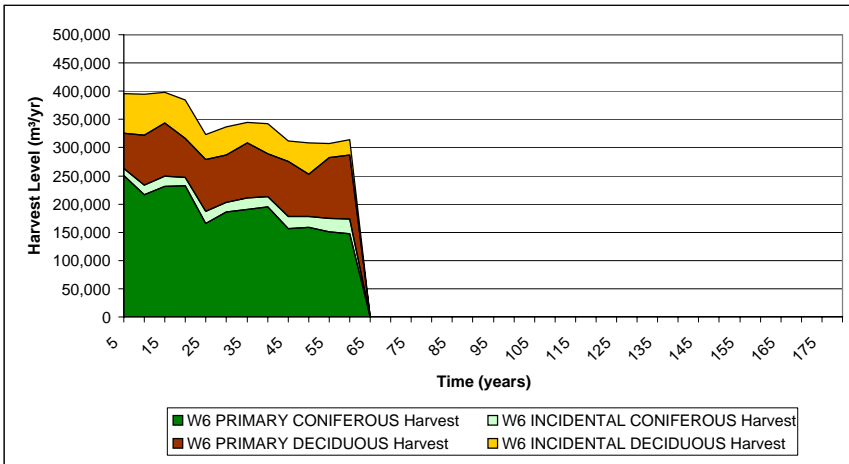


Harvest Levels* (Net 15/11)			Proportion of Conifer Harvest to Total Harvest	Harvest Levels**				Harvest Levels by Operator			Percent Difference from 1996 AAC					
Coniferous	Deciduous	Total		Coniferous	Primary Deciduous	Incidental Coniferous	Incidental Deciduous	Quota Holders Conif	Weyerhaeuser		Quota Holders		Weyerhaeuser			
							Conif	Conif	Decid	Total	Conif	Conif	Decid	Total		
With 5% spatial reduction																
Years 1-20	221,676	138,268	359,944	62%	205,436	69,344	16,240	68,924	128,829	64,595	120,677	185,272	-8%	17%	22%	20%
Years 21-60	175,883	130,481	306,364	57%	156,818	92,084	19,065	38,396	98,341	49,290	112,890	162,180	-30%	-11%	14%	5%
Without any spatial reduction (for comparison to Stanley results)																
Years 1-20	233,343	145,545	378,889	62%	216,248	72,994	17,095	72,552	135,609	69,482	127,954	197,436	-4%	26%	29%	28%
Years 21-60	185,140	137,348	322,488	57%	165,072	96,931	20,068	40,417	103,517	53,371	119,757	173,129	-26%	-4%	21%	12%

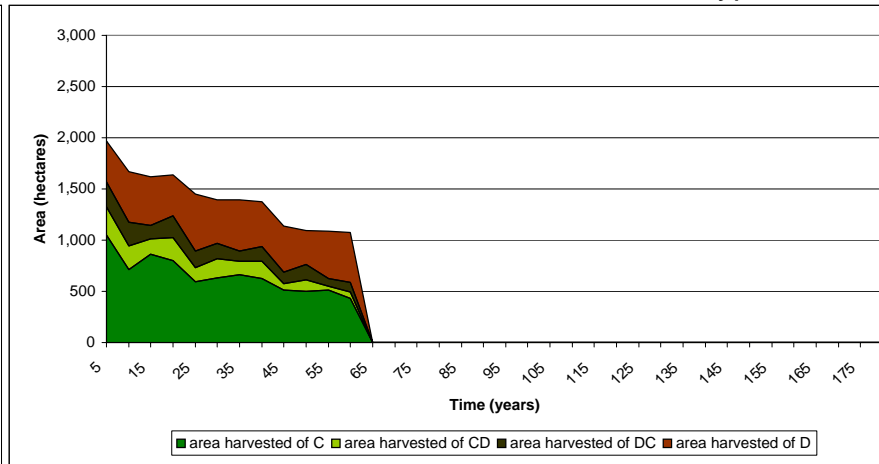
* All harvest levels are Woodstock levels reduced within block retention (3%) and cull (3% conif, 7% decid)

** Primary and incidental harvest levels are determined by averaging the harvest of the first 60 years. Primary conifer is coniferous harvest from C, CD, and DC stands. Primary decid is deciduous harvest from D stands.

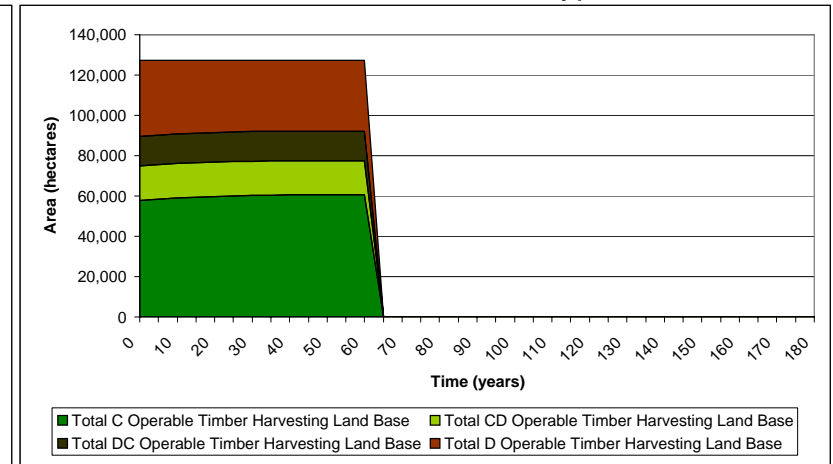
Annual Harvest Levels



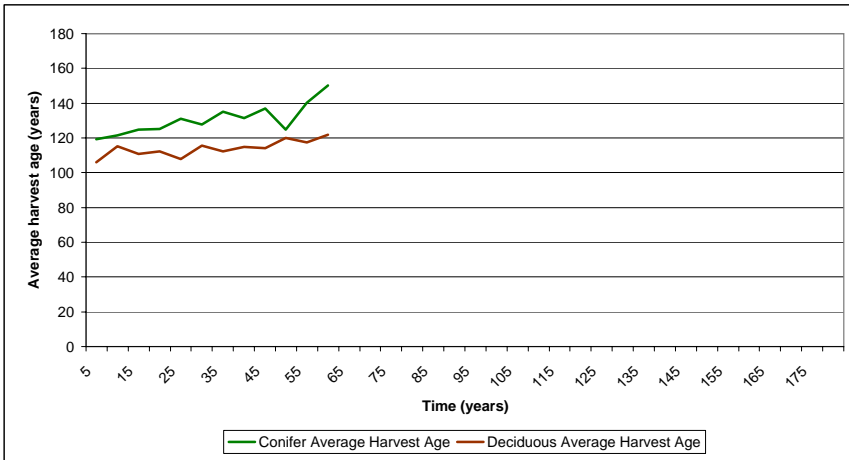
Annual area harvested in Broad Cover Type



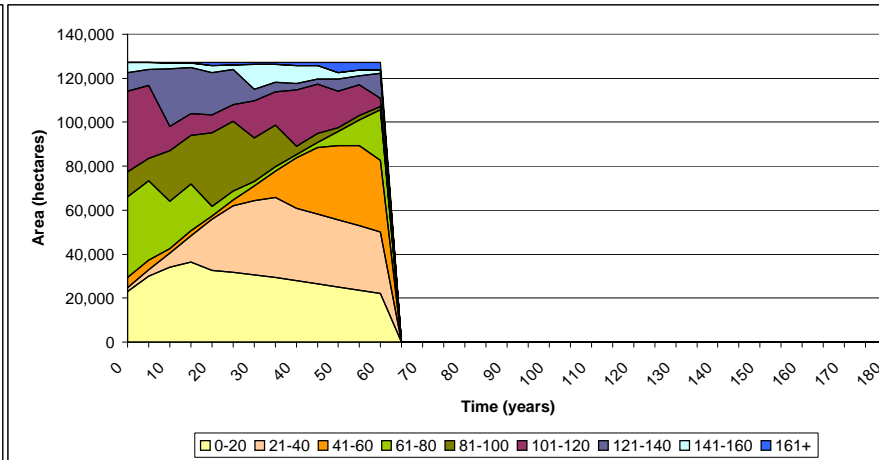
Area in Broad Cover Type



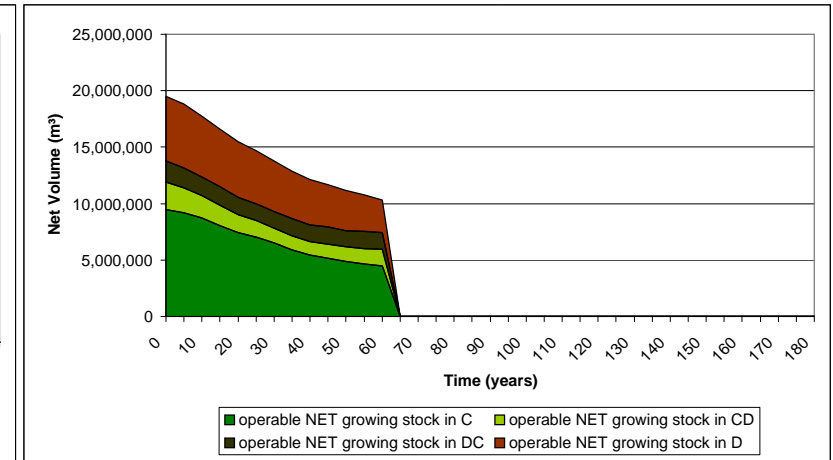
Average Harvest Age



Age Class Distribution



Operable Growing Stock



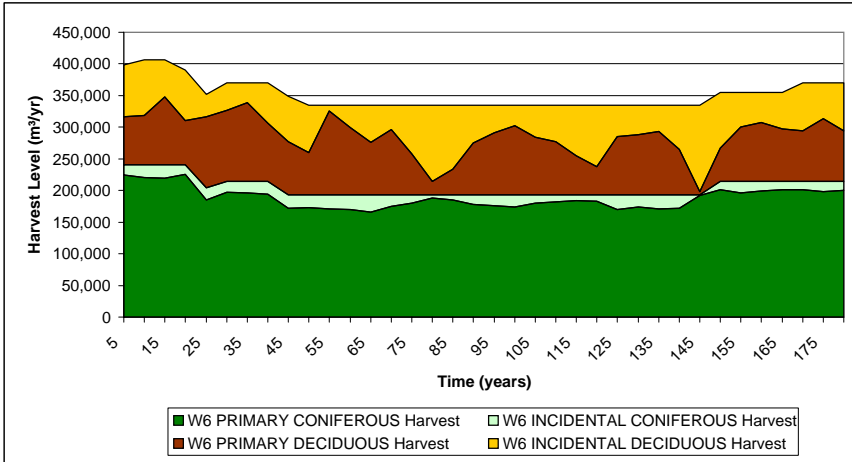
	Harvest Levels* (Net 15/11)			Proportion of Conifer Harvest to Total Harvest	Harvest Levels**				Harvest Levels by Operator			Percent Difference from Baseline				
	Coniferous	Deciduous	Total		Coniferous	Primary Deciduous	Incidental Coniferous	Incidental Deciduous	Quota Holders Conif	Weyerhaeuser Conif	Weyerhaeuser Decid	Weyerhaeuser Total	Quota Holders Conif	Weyerhaeuser Conif	Weyerhaeuser Decid	Weyerhaeuser Total
Years 1-20	217,618	129,838	347,456	63%	203,081	69,841	14,537	59,997	127,352	62,014	112,247	174,261	-9%	12%	13%	13%
Years 21-60	178,501	120,642	299,143	60%	158,851	83,714	19,650	36,927	99,616	50,634	103,051	153,684	-29%	-8%	4%	0%

* All harvest levels are reduced by spatial considerations, within block retention, and cull

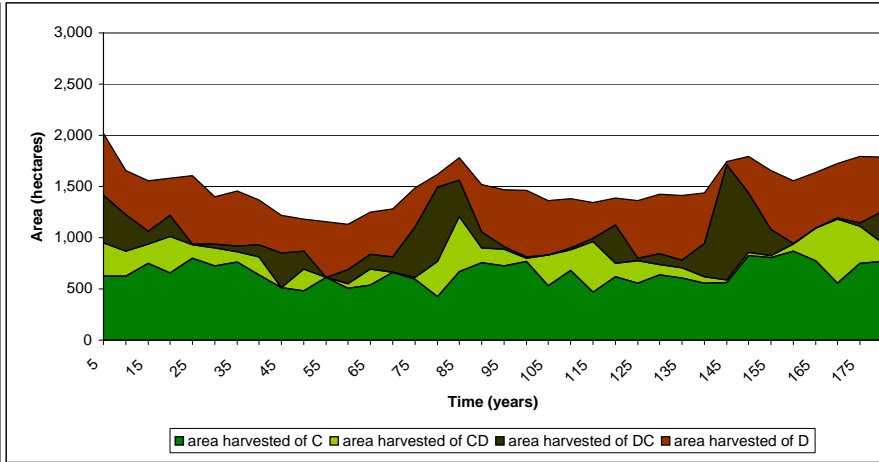
** Primary and incidental harvest levels are determined by averaging the harvest of the first 60 years. Primary conifer is coniferous harvest from C, CD, and DC stands. Primary decid is deciduous harvest from D stands.

RUN277 20-year surge cut for coniferous, conifer surge cut between 190-200,000 m³/yr, min. growing stock level set, carryover cut over 20 years

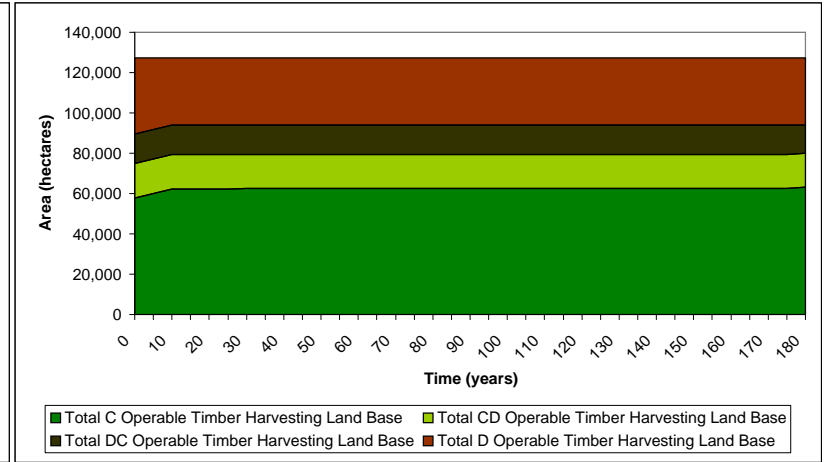
Annual Harvest Levels



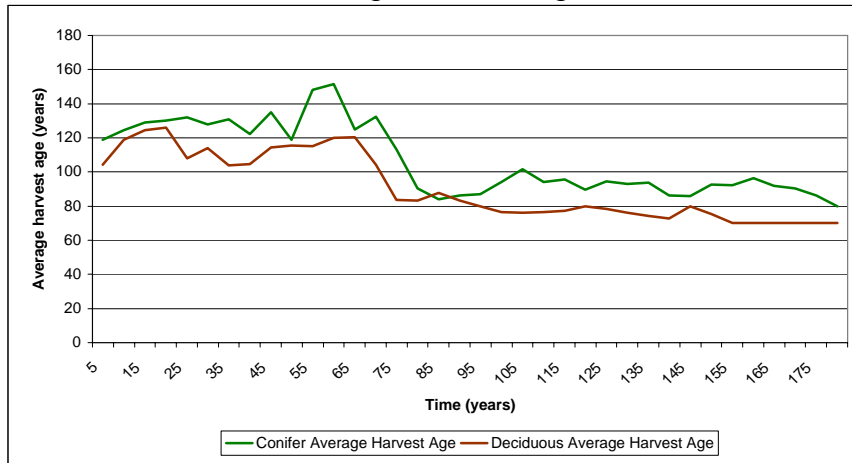
Annual area harvested in Broad Cover Type



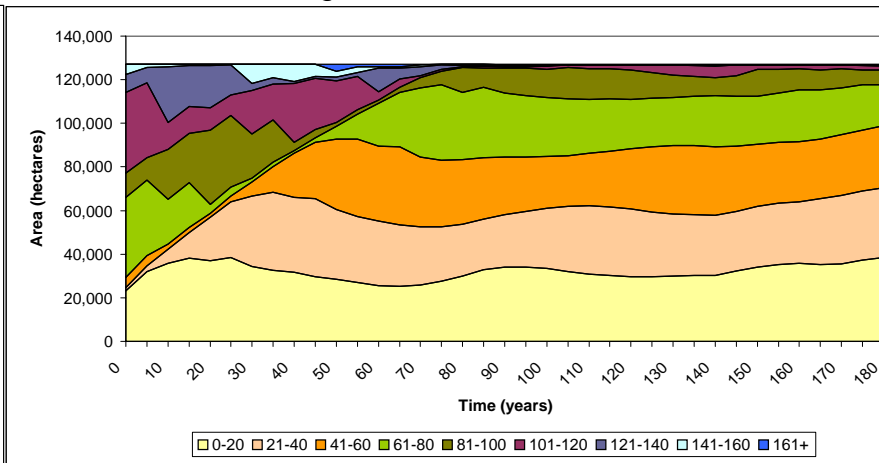
Area in Broad Cover Type



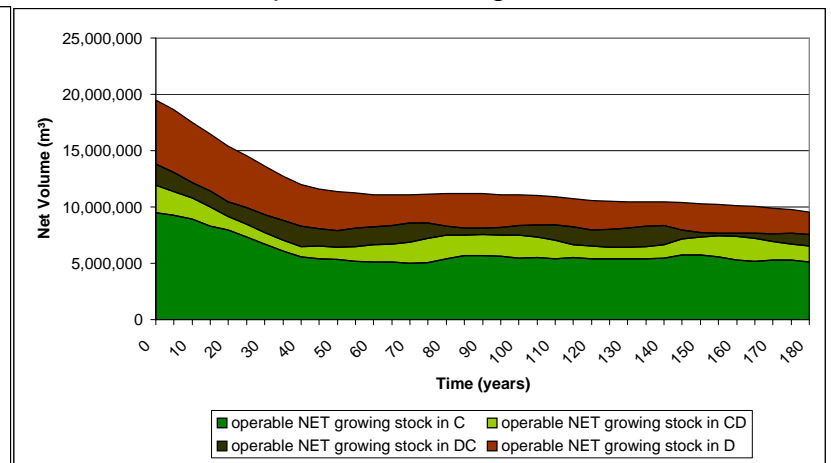
Average Harvest Age



Age Class Distribution



Operable Growing Stock

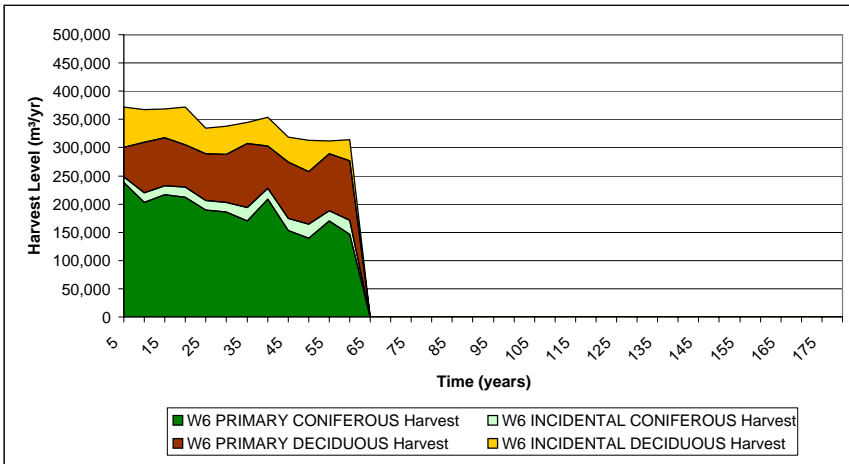


Harvest Levels* (Net 15/11)			Proportion of Conifer Harvest to Total Harvest	Harvest Levels**				Harvest Levels by Operator			Percent Difference from 1996 AAC					
Coniferous	Deciduous	Total		Coniferous	Primary Deciduous	Incidental Coniferous	Incidental Deciduous	Quota Holders Conif	Weyerhaeuser		Quota Holders		Weyerhaeuser			
							Conif	Conif	Decid	Total	Conif	Conif	Decid	Total		
With 5% spatial reduction																
Years 1-20	200,224	135,479	335,702	60%	183,873	69,711	16,350	65,768	115,307	56,665	117,888	174,552	-18%	2%	19%	13%
Years 21-60	181,031	127,847	308,878	59%	162,889	88,822	18,142	39,025	102,148	50,631	110,256	160,887	-27%	-8%	11%	4%
Without any spatial reduction (for comparison to Stanley results)																
Years 1-20	210,762	142,609	353,371	60%	193,551	73,380	17,211	69,229	121,376	61,134	125,018	186,152	-14%	11%	26%	21%
Years 21-60	190,559	134,576	325,135	59%	171,462	93,497	19,097	41,079	107,524	54,783	116,985	171,768	-23%	-1%	18%	11%

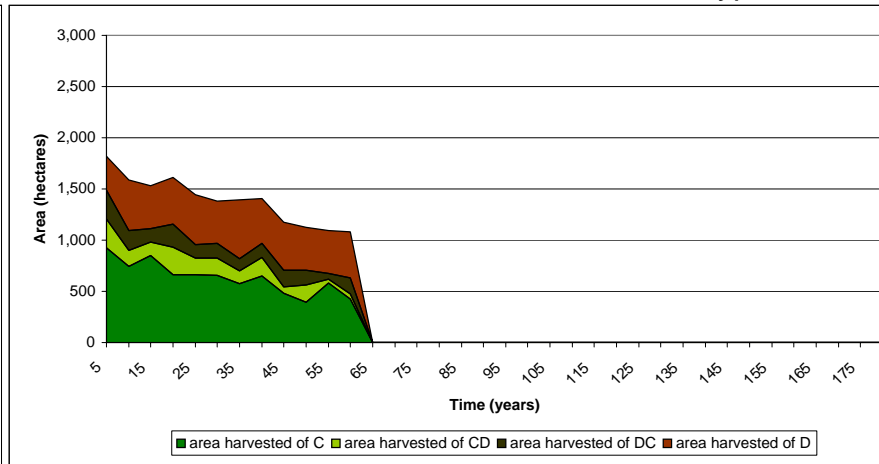
* All harvest levels are Woodstock levels reduced within block retention (3%) and cull (3% conif, 7% decid)

** Primary and incidental harvest levels are determined by averaging the harvest of the first 60 years. Primary conifer is coniferous harvest from C, CD, and DC stands. Primary decid is deciduous harvest from D stands.

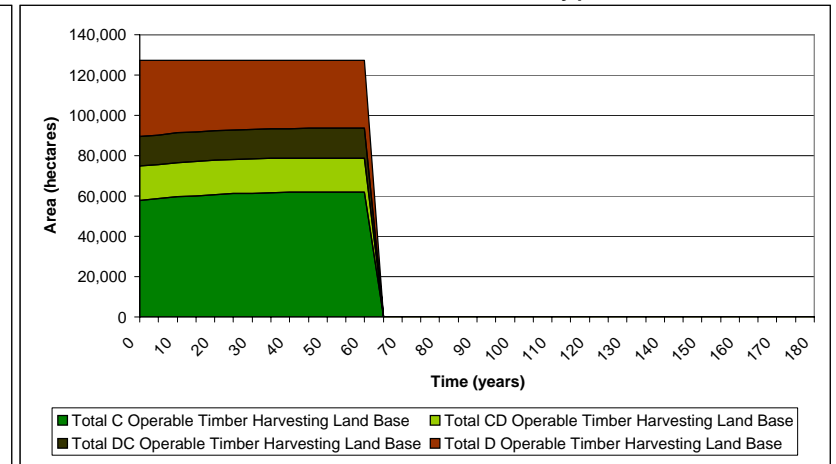
Annual Harvest Levels



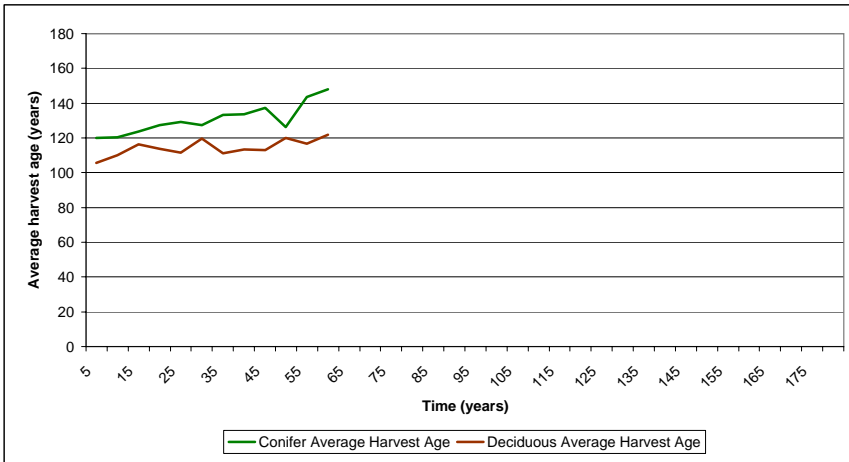
Annual area harvested in Broad Cover Type



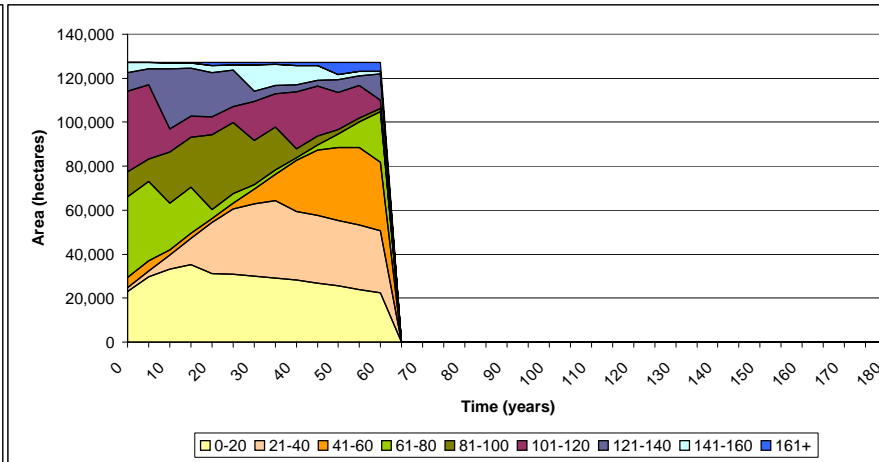
Area in Broad Cover Type



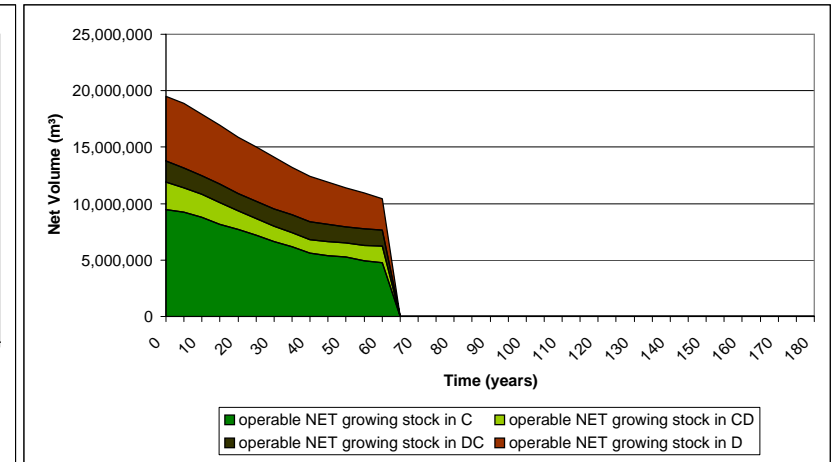
Average Harvest Age



Age Class Distribution



Operable Growing Stock



	Harvest Levels* (Net 15/11)			Proportion of Conifer Harvest to Total Harvest	Harvest Levels**				Harvest Levels by Operator			Percent Difference from Baseline				
	Coniferous	Deciduous	Total		Coniferous	Deciduous	Coniferous	Deciduous	Incidental	Quota Holders	Weyerhaeuser		Quota Holders	Weyerhaeuser		
									Conif	Conif	Decid	Total	Conif	Conif	Decid	Total
Years 1-20	202,998	122,947	325,945	62%	188,666	66,719	14,331	56,228	118,313	56,433	105,356	161,789	-16%	2%	6%	5%
Years 21-60	179,968	123,746	303,714	59%	160,355	84,990	19,613	38,756	100,559	51,158	106,155	157,313	-28%	-8%	7%	2%

* All harvest levels are reduced by spatial considerations, within block retention, and cull

** Primary and incidental harvest levels are determined by averaging the harvest of the first 60 years. Primary conifer is coniferous harvest from C, CD, and DC stands. Primary decid is deciduous harvest from D stands.

Table 1; Divided Landbase Results - 60 year average harvest levels

Scenario	Description	Effective Time Period for Harvest Levels	Harvest Levels* (Net 15/11)			Proportion of Conifer Harvest to Total Harvest	Harvest Levels**				Harvest Levels by Operator				Percent Difference from Baseline			
			Coniferous	Deciduous	Total		Primary Coniferous	Primary Deciduous	Incidental Coniferous	Incidental Deciduous	Quota Holders Coniferous	Quota Holders Coniferous	Weyerhaeuser Deciduous	Weyerhaeuser Total	Quota Holders Coniferous	Quota Holders Deciduous	Weyerhaeuser Coniferous	Weyerhaeuser Deciduous
LFS Yields																		
RUN50	LFS fully stocked yield curves for regenerated stands	Years 1-60	162,213	100,109	262,322	62%	147,511	65,819	14,702	34,290	92,504	41,457	82,518	123,975	-34%	-25%	-17%	-20%
RUN80	LFS yield curves	Years 1-60	148,445	94,038	242,483	61%	128,223	58,257	20,222	35,781	80,409	39,785	76,447	116,231	-43%	-28%	-23%	-25%

* All harvest levels are Woodstock levels reduced by spatial considerations (8.5% for conifer landbase, 17.1% for deciduous landbase), within block retention, and cull

** Primary and incidental harvest levels are determined by averaging the harvest of the first 60 years

Primary conifer is coniferous harvest from the conifer landbase, primary decid is deciduous harvest from the deciduous landbase

*** As calculated by The Forestry Corp. The numbers are slightly different from the DFMP due to rounding in the TSA process. Incidental volumes were calculated from Woodstock, not from Stanley.

**** Primary conifer is coniferous harvest from C, CD, and DC stands. Primary decid is deciduous harvest from D stands.

Table 2; Divided Landbase Spatial Results - 60 year average harvest levels

Scenario	Description	Effective Time Period for Harvest Levels	Harvest Levels* (Net 15/11)			Proportion of Conifer Harvest to Total Harvest	Harvest Levels**				Harvest Levels by Operator				Percent Difference from Baseline			
			Coniferous	Deciduous	Total		Primary Coniferous	Incidental Coniferous	Deciduous	Quota Holders Coniferous	Weyerhaeuser Coniferous	Weyerhaeuser Deciduous	Total	Quota Holders Coniferous	Coniferous	Deciduous	Total	
Spatial Allocation																		
RUN401	Non-spatial	Years 1-60	194,023	136,813	330,835	59%	175,304	84,441	18,718	52,372	109,933	55,837	119,222	175,059	-22%	1%	20%	13%
RUN401-Stanley1	Spatial (DFMP settings), blocked total primary cut	Years 1-60	198,699	120,227	318,926	62%	180,640	74,004	18,058	46,223	113,280	57,167	102,636	159,803	-19%	3%	4%	4%
	Spatial reduction (or apparent increase for spatial considerations)	Years 1-60	2%	-12%	-4%		3%	-12%	-4%	-12%								
RUN401-Stanley2	Spatial (DFMP settings), blocked primary cut by landbase	Years 1-60	192,492	105,214	297,706	65%	179,050	59,038	13,442	46,176	112,282	51,958	87,623	139,580	-20%	-6%	-12%	-10%
	Spatial reduction (or apparent increase for spatial considerations)	Years 1-60	-1%	-23%	-10%		2%	-30%	-28%	-12%								
RUN401-Stanley3	Spatial (DFMP settings), blocked total cut	Years 1-60	198,356	119,735	318,092	62%	180,346	73,428	18,010	46,307	113,095	57,009	102,144	159,154	-20%	3%	3%	3%
	Spatial reduction (or apparent increase for spatial considerations)	Years 1-60	2%	-12%	-4%		3%	-13%	-4%	-12%								
RUN410	Non-spatial	Years 1-60	192,996	138,839	331,835	58%	174,007	85,480	18,989	53,359	109,120	55,624	121,248	176,872	-22%	1%	22%	15%
RUN410-TOTPCUT	Spatial (reduced deviations), blocked total primary cut	Years 1-60	189,651	123,985	313,635	60%	171,793	76,050	17,857	47,935	107,732	53,667	106,394	160,061	-23%	-3%	7%	4%
	Spatial reduction (or apparent increase for spatial considerations)	Years 1-60	-2%	-9%	-5%		-2%	-10%	-5%	-8%								
RUN411	Non-spatial	Years 1-60	194,171	138,803	332,974	58%	175,180	86,054	18,991	52,749	109,855	56,064	121,212	177,276	-22%	1%	22%	15%
RUN411-Stanley-total	Spatial (reduced deviations), blocked total primary cut	Years 1-60	190,294	123,611	313,906	61%	172,417	76,289	17,877	47,322	108,123	53,920	106,020	159,940	-23%	-3%	7%	4%
	Spatial reduction (or apparent increase for spatial considerations)	Years 1-60	-2%	-10%	-5%		-2%	-10%	-4%	-10%								
RUN465	Non-spatial	Years 1-20 Years 21-60	235,454 181,866	178,663 116,900	414,117 298,766	57% 61%	217,291 163,372	84,395 84,517	18,163 18,494	94,268 32,383	136,263	70,939	161,072	232,011	-3%	28%	63%	50%
RUN465_TOTPCUT	Spatial (DFMP settings), blocked total primary cut	Years 1-20 Years 21-60	220,473 187,993	155,073 106,844	375,546 294,838	59% 64%	201,930 170,052	85,459 71,702	18,544 17,941	69,614 35,142	126,630	65,591	137,482	203,073	-10%	19%	39%	32%
	Spatial reduction (or apparent increase for spatial considerations)	Years 1-20 Years 21-60	-6% 3%	-13% -9%	-9% -1%		-7% 4%	1% -15%	2% -3%	-26% 9%								
RUN475	Non-spatial	Years 1-20 Years 21-60	235,567 183,404	181,401 118,768	416,967 302,172	56% 61%	218,136 163,769	84,237 86,291	17,431 19,635	97,164 32,477	136,793	70,522	163,810	234,332	-3%	27%	65%	52%
RUN475-TOTPCUT	Spatial (reduced deviations), blocked total primary cut	Years 1-20 Years 21-60	224,955 185,121	146,343 111,462	371,299 296,583	61% 62%	208,301 166,956	75,016 75,555	16,654 18,165	71,328 35,906	130,626	66,078	128,752	194,830	-7%	19%	30%	26%
	Spatial reduction (or apparent increase for spatial considerations)	Years 1-20 Years 21-60	-5% 1%	-19% -6%	-11% -2%		-5% 2%	-11% -12%	-4% -7%	-27% 11%								
RUN476	Non-spatial	Years 1-20 Years 21-60	233,343 183,476	183,974 118,057	417,317 301,533	56% 61%	215,013 164,040	87,477 85,599	18,330 19,437	96,497 32,458	134,835	70,257	166,383	236,639	-4%	27%	68%	53%
RUN476-TOTPCUT	Spatial (reduced deviations), blocked total primary cut	Years 1-20 Years 21-60	226,120 180,017	142,671 113,511	368,791 293,528	61% 61%	209,841 161,317	72,826 77,782	16,279 18,700	69,846 35,729	131,591	66,276	125,080	191,357	-6%	20%	26%	24%
	Spatial reduction (or apparent increase for spatial considerations)	Years 1-20 Years 21-60	-3% -2%	-22% -4%	-12% -3%		-2% -2%	-17% -9%	-11% -4%	-28% 10%								
RUN477	Non-spatial	Years 1-20 Years 21-60	210,762 188,401	179,180 119,418	389,942 307,819	54% 61%	192,548 168,917	87,486 85,608	18,213 19,484	91,694 33,810	120,747	61,763	161,589	223,352	-14%	12%	63%	45%
RUN477-TOTPCUT	Spatial (reduced deviations), blocked total primary cut	Years 1-20 Years 21-60	205,482 183,154	143,837 113,991	349,319 297,145	59% 62%	188,611 164,567	75,899 76,897	16,870 18,587	67,939 37,094	118,278	58,952	126,246	185,198	-16%	7%	27%	20%
	Spatial reduction (or apparent increase for spatial considerations)	Years 1-20 Years 21-60	-3% -3%	-20% -5%	-10% -3%		-2% -3%	-13% -10%	-7% -5%	-26% 10%								

* All harvest levels are reduced by within block retention and cull

** Primary and incidental harvest levels are determined by averaging the harvest of the first 60 years

Primary conifer is coniferous harvest from C, CD, and DC stands, primary decid is deciduous harvest from D stands

Table 3; Divided Landbase Results - 180 year average harvest levels

Scenario	Description	Effective Time Period for Harvest Levels	Harvest Levels* (Net 15/11)			Proportion of Conifer Harvest to Total Harvest	Harvest Levels**				Harvest Levels by Operator				Percent Difference from Baseline			
			Coniferous	Deciduous	Total		Primary Coniferous	Primary Deciduous	Incidental Coniferous	Incidental Deciduous	Quota Holders Coniferous	Quota Holders Coniferous	Weyerhaeuser Deciduous	Weyerhaeuser Total	Quota Holders Coniferous	Quota Holders Coniferous	Weyerhaeuser Deciduous	Weyerhaeuser Deciduous
LFS Yields																		
RUN50	LFS fully stocked yield curves for regenerated stands	Years 1-180	163,801	116,832	280,633	58%	144,423	64,442	19,377	52,390	90,568	44,981	99,241	144,222	-36%	-19%	0%	-7%
RUN80	LFS yield curves	Years 1-180	149,899	116,308	266,208	56%	128,223	58,257	21,676	58,052	80,409	41,238	98,717	139,956	-43%	-25%	0%	-9%

* All harvest levels are Woodstock levels reduced by spatial considerations (8.5% for conifer landbase, 17.1% for deciduous landbase), within block retention, and cull

** Primary and incidental harvest levels are determined by averaging the harvest for 180 years

Primary conifer is coniferous harvest from the conifer landbase, primary decid is deciduous harvest from the deciduous landbase

*** As calculated by The Forestry Corp. The numbers are slightly different from the DFMP due to rounding in the TSA process. Incidental volumes were calculated from Woodstock, not from Stanley.

**** Primary conifer is coniferous harvest from C, CD, and DC stands. Primary decid is deciduous harvest from D stands.

Table 4; Divided Landbase Spatial Results - 180 year average harvest levels

Scenario	Description	Effective Time Period for Harvest Levels	Harvest Levels* (Net 15/11)			Proportion of Conifer Harvest to Total Harvest	Harvest Levels**				Harvest Levels by Operator				Percent Difference from Baseline			
			Coniferous	Deciduous	Total		Primary Coniferous	Deciduous	Incidental Coniferous	Deciduous	Quota Holders Coniferous	Coniferous	Deciduous	Total	Quota Holders Coniferous	Coniferous	Deciduous	Total
Spatial Allocation																		
RUN401	Non-spatial	Years 1-180	193,778	141,386	335,163	58%	175,799	81,924	17,978	59,462	110,244	55,282	123,795	179,077	-22%	0%	25%	16%
RUN401-Stanley1	Spatial (DFMP settings), blocked total primary cut	Years 1-180	196,907	133,070	329,977	60%	181,151	71,798	15,756	61,272	113,600	55,055	115,479	170,534	-19%	0%	17%	10%
	Spatial reduction (or apparent increase for spatial considerations)	Years 1-180	2%	-6%	-2%		3%	-12%	-12%	3%								
RUN401-Stanley2	Spatial (DFMP settings), blocked primary cut by landbase	Years 1-180	192,125	118,010	310,136	62%	179,556	57,278	12,570	60,732	112,599	51,274	100,419	151,693	-20%	-7%	1%	-2%
	Spatial reduction (or apparent increase for spatial considerations)	Years 1-180	-1%	-17%	-7%		2%	-30%	-30%	2%								
RUN401-Stanley3	Spatial (DFMP settings), blocked total cut	Years 1-180	195,460	132,488	327,948	60%	179,726	71,698	15,734	60,790	112,706	54,502	114,897	169,399	-20%	-1%	16%	10%
	Spatial reduction (or apparent increase for spatial considerations)	Years 1-180	1%	-6%	-2%		2%	-12%	-12%	2%								
RUN410	Non-spatial	Years 1-180	188,831	134,174	323,005	58%	171,107	81,149	17,724	53,025	107,301	53,278	116,583	169,861	-24%	-4%	18%	10%
RUN410-TOTPCUT	Spatial (reduced deviations), blocked total primary cut	Years 1-180	183,642	125,048	308,691	59%	167,680	73,085	15,963	51,963	105,152	50,239	107,457	157,696	-25%	-9%	8%	2%
	Spatial reduction (or apparent increase for spatial considerations)	Years 1-180	-5%	-12%	-8%		-2%	-10%	-10%	-2%								
RUN411	Non-spatial	Years 1-180	188,649	134,644	323,293	58%	170,972	81,204	17,678	53,440	107,216	53,181	117,053	170,234	-24%	-4%	18%	10%
RUN411-Stanley-total	Spatial (reduced deviations), blocked total primary cut	Years 1-180	184,127	125,924	310,051	59%	168,156	73,365	15,971	52,560	105,451	50,425	108,333	158,758	-25%	-9%	9%	3%
	Spatial reduction (or apparent increase for spatial considerations)	Years 1-180	-5%	-11%	-7%		-2%	-10%	-10%	-2%								
RUN465	Non-spatial	Years 1-20 Years 21-180	235,454 185,928	178,663 140,336	414,117 326,264	57% 57%	217,291 168,005	84,395 81,596	18,163 17,923	94,268 58,741	136,263	70,939	161,072	232,011	-3%	28%	63%	50%
RUN465_TOTPCUT	Spatial (DFMP settings), blocked total primary cut	Years 1-20 Years 21-180	220,322 190,080	173,063 130,366	393,384 320,446	56% 59%	201,930 174,874	85,459 69,223	18,392 15,206	87,604 61,142	126,630	65,439	155,472	220,911	-10%	18%	57%	43%
	Spatial reduction (or apparent increase for spatial considerations)	Years 1-20 Years 21-180	-6% 2%	-3% -7%	-5% -2%		-7% 4%	1% -15%	1% -15%	-7% 4%								
RUN475	Non-spatial	Years 1-20 Years 21-180	235,567 181,318	181,401 131,294	416,967 312,612	56% 58%	218,136 163,509	84,237 80,898	17,431 17,810	97,164 50,396	136,793	70,522	163,810	234,332	-3%	27%	65%	52%
RUN475-TOTPCUT	Spatial (reduced deviations), blocked total primary cut	Years 1-20 Years 21-180	223,824 182,284	167,799 122,209	391,623 304,493	57% 60%	208,301 166,690	75,016 70,833	15,523 15,594	92,783 51,376	130,626	64,947	150,208	215,155	-7%	17%	52%	39%
	Spatial reduction (or apparent increase for spatial considerations)	Years 1-20 Years 21-180	-5% 1%	-7% -7%	-6% -3%		-5% 2%	-11% -12%	-11% -12%	-5% 2%								
RUN476	Non-spatial	Years 1-20 Years 21-180	233,343 181,448	183,974 131,032	417,317 312,480	56% 58%	215,013 163,778	87,477 80,602	18,330 17,669	96,497 50,430	134,835	70,257	166,383	236,639	-4%	27%	68%	53%
RUN476-TOTPCUT	Spatial (reduced deviations), blocked total primary cut	Years 1-20 Years 21-180	225,101 177,116	167,001 122,834	392,102 299,950	57% 59%	209,841 161,060	72,826 73,241	15,260 16,056	94,176 49,593	131,591	65,258	149,410	214,668	-6%	18%	51%	39%
	Spatial reduction (or apparent increase for spatial considerations)	Years 1-20 Years 21-180	-4% -2%	-9% -6%	-6% -4%		-2% -2%	-17% -9%	-17% -9%	-2% -2%								
RUN477	Non-spatial	Years 1-20 Years 21-180	210,762 184,737	179,180 130,428	389,942 315,165	54% 59%	192,548 167,057	87,486 80,610	18,213 17,679	91,694 49,818	120,747	61,763	161,589	223,352	-14%	12%	63%	45%
RUN477-TOTPCUT	Spatial (reduced deviations), blocked total primary cut	Years 1-20 Years 21-180	204,412 178,637	165,718 120,943	370,130 299,579	55% 60%	188,611 162,756	75,899 72,407	15,801 15,880	89,819 48,536	118,278	57,882	148,127	206,009	-16%	5%	50%	33%
	Spatial reduction (or apparent increase for spatial considerations)	Years 1-20 Years 21-180	-3% -3%	-8% -7%	-5% -5%		-2% -3%	-13% -10%	-13% -10%	-2% -3%								

* All harvest levels are reduced by within block retention and cull

** Primary and incidental harvest levels are determined by reducing the 180 year average harvest level by the appropriate spatial reduction

Primary conifer is coniferous harvest from C, CD, and DC stands, primary decid is deciduous harvest from D stands

Table 5; Combined Landbase Results - 60 year average harvest levels

Scenario	Description	Effective Time Period for Harvest Levels	Harvest Levels* (Net 15/11)			Proportion of Conifer Harvest to Total Harvest	Harvest Levels**				Harvest Levels by Operator				Percent Difference from Baseline			
			Coniferous	Deciduous	Total		Primary		Incidental		Quota Holders		Weyerhaeuser		Quota Holders		Weyerhaeuser	
						Coniferous	Deciduous	Coniferous	Deciduous	Conif	Conif	Decid	Total	Conif	Conif	Decid	Total	
RUN276	20-year surge cut for coniferous, conifer surge cut between 200-220,000 m³/yr, min. growing stock level set, carryover cut over 20	Years 1-20 Years 21-60	210,009 166,626	130,991 123,613	341,000 290,239	62% 57%	194,623 148,565	65,694 87,238	15,386 18,061	65,297 36,376	122,048	59,709	113,400	173,108	-13%	8%	14%	12%
RUN277	20-year surge cut for coniferous, conifer surge cut between 190-200,000 m³/yr, min. growing stock level set, carryover cut over 20	Years 1-20 Years 21-60	189,685 171,503	128,348 121,118	318,034 292,621	60% 59%	174,196 154,316	66,042 84,147	15,490 17,187	62,306 36,971	109,238	52,195	110,757	162,953	-22%	-6%	12%	6%
RUN250	20-year surge cut for coniferous and deciduous	Years 1-20 Years 21-60	224,964 165,144	169,068 115,094	394,033 280,238	57% 59%	204,848 148,292	96,659 76,008	20,116 16,852	72,410 39,086	128,460	68,252	151,477	219,729	-9%	23%	53%	42%
RUN255	20-year surge cut for coniferous and deciduous, conifer surge cut between 200-220,000 m³/yr	Years 1-20 Years 21-60	207,384 170,825	172,634 111,543	380,017 282,368	55% 60%	186,293 154,499	102,726 72,516	21,090 16,325	69,907 39,027	116,825	62,307	155,043	217,350	-17%	13%	56%	41%
RUN300	Evenflow with deciduous harvest age reduced by 10 years	Years 1-60	175,955	124,163	300,117	59%	158,484	79,593	17,471	44,570	99,385	48,318	106,572	154,889	-29%	-13%	8%	0%
RUN360	20-year surge cut for coniferous with deciduous harvest age reduced by 10 years	Years 1-20 Years 21-60	240,074 158,067	135,043 126,809	375,117 284,876	64% 55%	225,719 138,678	65,139 87,371	14,355 19,389	69,904 39,438	141,548	70,273	117,452	187,726	1%	27%	19%	22%
RUN350	20-year surge cut for coniferous and deciduous with deciduous harvest reduced by 10 years	Years 1-20 Years 21-60	243,313 160,032	165,771 120,566	409,085 280,598	59% 57%	224,001 142,324	91,544 80,591	19,312 17,707	74,227 39,975	140,471	74,590	148,180	222,770	0%	35%	50%	44%
Maximize one species harvest volume, set minimum harvest level for other****																		
RUN150	Max. coniferous harvest volume, min. 120,000 m³/yr deciduous harvest volume	Years 1-60	147,434	123,380	270,814	54%	131,531	75,299	15,903	48,082	82,483	36,699	105,789	142,488	-41%	-34%	7%	-8%
RUN151	Max. deciduous harvest volume, min. 165,000 m³/yr coniferous harvest volume	Years 1-60	166,643	115,951	282,594	59%	151,420	70,938	15,223	45,013	94,955	43,436	98,360	141,796	-32%	-21%	-1%	-8%
RUN152	Max. deciduous harvest volume, min. 175,000 m³/yr coniferous harvest volume	Years 1-60	175,051	107,839	282,890	62%	159,926	67,406	15,124	40,433	100,290	46,509	90,248	136,757	-29%	-16%	-9%	-11%
RUN153	Max. deciduous harvest volume, min. 185,000 m³/yr coniferous harvest volume	Years 1-60	185,090	96,443	281,533	66%	171,231	58,551	13,859	37,892	107,379	49,459	78,852	128,311	-24%	-11%	-20%	-17%
RUN154	Max. deciduous harvest volume, min. 195,000 m³/yr coniferous harvest volume			INFEASIBLE				INFEASIBLE										
RUN155	Max. coniferous harvest volume (first 20 years), min. 165,000 m³/yr coniferous harvest volume (years 21-180), min. 120,000 m³/yr deciduous harvest volume			INFEASIBLE				INFEASIBLE										
RUN156	Max. coniferous harvest volume, 20 year surge cut for conifer, min. 165,000 m³/yr coniferous harvest volume (years 21-180)	Years 1-20 Years 21-60	304,108 165,194	96,300 98,649	400,408 263,843	76% 63%	296,738 148,880	32,643 44,846	7,370 16,314	63,657 53,803	186,084	89,772	78,709	168,481	32%	62%	-21%	9%
RUN157	Max. coniferous harvest volume, 20 year surge cut for conifer, coniferous harvest volume must be within 55-60% of total	Years 1-20 Years 21-60	241,498 180,207	102,342 104,838	343,840 285,045	70% 63%	230,083 164,119	59,539 56,210	11,415 16,088	42,802 48,628	144,285	68,961	84,751	153,711	3%	25%	-14%	0%

* All harvest levels are Woodstock levels reduced by spatial considerations (assumed 10%), within block retention, and cull

** Primary and incidental harvest levels are determined by averaging the harvest of the first 60 years

Primary conifer is coniferous harvest from C, CD, and DC stands, primary decid is deciduous harvest from D stands

*** As calculated by The Forestry Corp. The numbers are slightly different from the DFMP due to rounding in the TSA process. Incidental volumes were calculated from Woodstock, not from Stanley.

**** Assumed 3% reduction for spatial considerations

Table 7; Combined Landbase Results - 180 year average harvest levels

Scenario	Description	Effective Time Period for Harvest Levels	Harvest Levels* (Net 15/11)			Proportion of Conifer Harvest to Total Harvest	Harvest Levels**				Harvest Levels by Operator				Percent Difference from Baseline			
			Coniferous	Deciduous	Total		Primary		Incidental		Quota Holders		Weyerhaeuser		Quota Holders		Weyerhaeuser	
						Coniferous	Deciduous	Coniferous	Deciduous	Conif	Conif	Decid	Total	Conif	Conif	Decid	Total	
RUN276	20-year surge cut for coniferous, conifer surge cut between 200-220,000 m³/yr, min. growing stock level set, carryover cut over 20	Years 1-20 Years 21-180	210,009 164,792	130,991 119,584	341,000 284,376	62% 58%	194,623 150,471	65,694 69,602	15,386 14,321	65,297 49,982	122,048	59,709	113,400	173,108	-13%	8%	14%	12%
RUN277	20-year surge cut for coniferous, conifer surge cut between 190-200,000 m³/yr, min. growing stock level set, carryover cut over 20	Years 1-20 Years 21-180	189,685 169,615	128,348 117,169	318,034 286,784	60% 59%	174,196 155,779	66,042 67,075	15,490 13,837	62,306 50,093	109,238	52,195	110,757	162,953	-22%	-6%	12%	6%
RUN250	20-year surge cut for coniferous and deciduous	Years 1-20 Years 21-180	224,964 170,811	169,068 118,155	394,033 288,966	57% 59%	204,848 156,312	96,659 67,410	20,116 14,498	72,410 50,745	128,460	68,252	151,477	219,729	-9%	23%	53%	42%
RUN255	20-year surge cut for coniferous and deciduous, conifer surge cut between 200-220,000 m³/yr	Years 1-20 Years 21-180	207,384 176,128	172,634 114,642	380,017 290,770	55% 61%	186,293 162,270	102,726 63,512	21,090 13,858	69,907 51,130	116,825	62,307	155,043	217,350	-17%	13%	56%	41%
RUN300	Evenflow with deciduous harvest age reduced by 10 years	Years 1-180	175,955	124,697	300,652	59%	159,741	74,001	16,213	50,696	100,174	47,529	107,106	154,635	-29%	-14%	8%	0%
RUN360	20-year surge cut for coniferous with deciduous harvest age reduced by 10 years	Years 1-20 Years 21-180	240,074 163,292	135,043 128,868	375,117 292,159	64% 56%	225,719 146,349	65,139 77,445	14,355 16,943	69,904 51,423	141,548	70,273	117,452	187,726	1%	27%	19%	22%
RUN350	20-year surge cut for coniferous and deciduous with deciduous harvest reduced by 10 years	Years 1-20 Years 21-180	243,313 165,523	165,771 123,521	409,085 289,044	59% 57%	224,001 149,392	91,544 73,464	19,312 16,131	74,227 50,057	140,471	74,590	148,180	222,770	0%	35%	50%	44%
Maximize one species harvest volume, set minimum harvest level for other****																		
RUN150	Max. coniferous harvest volume, min. 120,000 m³/yr deciduous harvest volume	Years 1-180	145,075	123,380	268,455	54%	126,388	77,484	18,687	45,896	79,258	37,565	105,789	143,354	-44%	-32%	7%	-7%
RUN151	Max. deciduous harvest volume, min. 165,000 m³/yr coniferous harvest volume	Years 1-180	167,126	115,333	282,459	59%	150,029	69,869	17,097	45,464	94,083	44,791	97,742	142,533	-33%	-19%	-1%	-8%
RUN152	Max. deciduous harvest volume, min. 175,000 m³/yr coniferous harvest volume	Years 1-180	175,847	107,264	283,111	62%	160,503	61,513	15,344	45,751	100,651	46,944	89,673	136,616	-28%	-15%	-9%	-12%
RUN153	Max. deciduous harvest volume, min. 185,000 m³/yr coniferous harvest volume	Years 1-180	185,411	95,929	281,340	66%	171,755	51,357	13,656	44,572	107,708	49,452	78,338	127,789	-23%	-11%	-21%	-17%
RUN154	Max. deciduous harvest volume, min. 195,000 m³/yr coniferous harvest volume		INFEASIBLE				INFEASIBLE											
RUN155	Max. coniferous harvest volume (first 20 years), min. 165,000 m³/yr coniferous harvest volume (years 21-180), min. 120,000 m³/yr deciduous harvest volume		INFEASIBLE				INFEASIBLE											
RUN156	Max. coniferous harvest volume, 20 year surge cut for conifer, min. 165,000 m³/yr coniferous harvest volume (years 21-180)	Years 1-20 Years 21-180	304,108 165,710	96,300 93,755	400,408 259,465	76% 64%	296,738 150,471	32,643 47,983	7,370 15,239	63,657 45,772	186,084	89,772	78,709	168,481	32%	62%	-21%	9%
RUN157	Max. coniferous harvest volume, 20 year surge cut for conifer, coniferous harvest volume must be within 55-60% of total	Years 1-20 Years 21-180	241,498 179,398	102,342 97,974	343,840 277,371	70% 65%	230,083 165,230	59,539 49,760	11,415 14,168	42,802 48,214	144,285	68,961	84,751	153,711	3%	25%	-14%	0%

* All harvest levels are Woodstock levels reduced by spatial considerations (assumed 10%), within block retention, and cull

** Primary and incidental harvest levels are determined by averaging the harvest for 180 years

Primary conifer is coniferous harvest from C, CD, and DC stands, primary decid is deciduous harvest from D stands

*** As calculated by The Forestry Corp. The numbers are slightly different from the DFMP due to rounding in the TSA process. Incidental volumes were calculated from Woodstock, not from Stanley.

**** Assumed 3% reduction for spatial considerations

Table 8; Combined Landbase Spatial Results - 180 year average harvest levels

Scenario	Description	Effective Time Period for Harvest Levels	Harvest Levels* (Net 15/11)			Proportion of Conifer Harvest to Total Harvest	Harvest Levels**				Harvest Levels by Operator				Percent Difference from Baseline			
			Coniferous	Deciduous	Total		Primary Coniferous	Deciduous	Incidental Coniferous	Deciduous	Quota Holders Coniferous	Coniferous	Deciduous	Total	Quota Holders Coniferous	Coniferous	Deciduous	Total
Spatial Allocation																		
RUN122	Non-spatial	Years 1-180	213,449	110,195	323,644	66%	196,958	58,846	16,491	51,348								
RUN122-Stanley	Spatial (DFMP settings)	Years 1-180	210,223	115,673	325,896	65%	193,981	61,772	16,242	53,901	121,645	60,326	98,082	158,408	-13%	9%	-1%	3%
	Spatial reduction (or apparent increase for spatial considerations)	Years 1-180	-2%	5%	1%		-2%	5%	-2%	5%								
RUN122-Stanley2	Spatial (reduced deviations)	Years 1-180	193,078	104,142	297,220	65%	178,160	55,614	14,917	48,528	111,724	53,101	86,551	139,653	-20%	-4%	-13%	-10%
	Spatial reduction (or apparent increase for spatial considerations)	Years 1-180	-10%	-5%	-8%		-10%	-5%	-10%	-5%								
RUN123	Non-spatial	Years 1-180	195,268	135,201	330,469	59%	177,887	80,221	17,380	54,980	111,553	55,462	117,610	173,073	-21%	0%	19%	12%
RUN123-Stanley	Spatial (DFMP settings)	Years 1-180	192,901	119,958	312,859	62%	175,731	71,177	17,170	48,781	110,201	54,448	102,367	156,815	-22%	-2%	3%	2%
	Spatial reduction (or apparent increase for spatial considerations)	Years 1-180	-1%	-11%	-5%		-1%	-11%	-1%	-11%								
RUN200	Non-spatial	Years 1-180	195,646	136,291	331,937	59%	178,650	78,456	16,996	57,835	112,031	55,363	118,700	174,063	-20%	0%	20%	13%
RUN200-Stanley	Spatial (DFMP settings)	Years 1-180	194,958	120,051	315,009	62%	178,021	69,107	16,937	50,944	111,637	55,069	102,460	157,528	-21%	0%	3%	2%
	Spatial reduction (or apparent increase for spatial considerations)	Years 1-180	0%	-12%	-5%		0%	-12%	0%	-12%								
RUN210	Non-spatial	Years 1-180	191,670	130,338	322,007	60%	176,279	73,330	15,391	57,007	110,545	52,873	112,747	165,620	-21%	-4%	14%	7%
RUN210-TOTCUT	Spatial (reduced deviations)	Years 1-180	186,728	116,350	303,079	62%	171,734	65,461	14,994	50,889	107,695	50,782	98,759	149,541	-23%	-8%	0%	-3%
	Spatial reduction (or apparent increase for spatial considerations)	Years 1-180	-3%	-11%	-6%		-3%	-11%	-3%	-11%								
RUN211	Non-spatial	Years 1-180	192,105	128,783	320,888	60%	176,811	71,671	15,294	57,112	110,878	52,975	111,192	164,167	-21%	-4%	12%	6%
RUN211-Stanley	Spatial (reduced deviations)	Years 1-180	186,546	114,843	301,388	62%	171,694	63,913	14,852	50,930	107,669	50,624	97,252	147,876	-23%	-8%	-2%	-4%
	Spatial reduction (or apparent increase for spatial considerations)	Years 1-180	-3%	-11%	-6%		-3%	-11%	-3%	-11%								
RUN265	Non-spatial	Years 1-20 Years 21-180	233,343 187,782	145,387 138,738	378,730 326,520	62% 58%	216,090 170,051	72,232 82,681	17,253 17,731	73,155 56,057	135,510	69,581	127,796	197,377	-4%	26%	29%	28%
RUN265-Stanley	Spatial (DFMP settings)	Years 1-20 Years 21-180	211,643 195,181	142,396 114,858	354,039 310,039	60% 63%	195,994 176,751	70,746 68,450	15,648 18,430	71,650 46,408	122,908	60,483	124,805	185,288	-13%	9%	26%	20%
	Spatial reduction (or apparent increase for spatial considerations)	Years 1-20 Years 21-180	-9% 4%	-2% -17%	-7% -5%		-9% 4%	-2% -17%	-9% 4%	-2% -17%								
RUN265-TOTCUT_4DEV	Spatial (reduced deviations)	Years 1-20 Years 21-180	215,841 181,552	128,282 124,536	344,123 306,088	63% 59%	199,882 164,409	63,734 74,217	15,959 17,143	64,548 50,319	125,346	62,243	110,691	172,934	-11%	13%	12%	12%
	Spatial reduction (or apparent increase for spatial considerations)	Years 1-20 Years 21-180	-8% -3%	-12% -10%	-9% -6%		-8% -3%	-12% -10%	-8% -3%	-12% -10%								
RUN275	Non-spatial	Years 1-20 Years 21-180	233,343 182,817	140,391 133,542	373,734 316,359	62% 58%	217,132 166,677	67,715 78,179	16,211 16,140	72,676 55,363	136,164	68,928	122,800	191,727	-3%	25%	24%	24%
RUN275-TOTCUT	Spatial (reduced deviations)	Years 1-20 Years 21-180	222,366 178,021	124,171 120,477	346,538 298,498	64% 60%	206,918 162,304	59,892 70,530	15,448 15,717	64,280 49,947	129,758	64,356	106,580	170,936	-8%	16%	8%	11%
	Spatial reduction (or apparent increase for spatial considerations)	Years 1-20 Years 21-180	-5% -3%	-12% -10%	-7% -6%		-5% -3%	-12% -10%	-5% -3%	-12% -10%								
RUN276	Non-spatial	Years 1-20 Years 21-180	233,343 183,102	145,545 132,871	378,889 315,973	62% 58%	216,248 167,190	72,994 77,335	17,095 15,912	72,552 55,536	135,609	69,482	127,954	197,436	-4%	26%	29%	28%
RUN276-TOTCUT	Spatial (reduced deviations)	Years 1-20 Years 21-180	217,618 176,536	129,838 116,709	347,456 293,246	63% 60%	201,675 161,195	65,116 67,929	15,943 15,342	64,722 48,781	126,471	62,896	112,247	175,143	-10%	14%	13%	13%
	Spatial reduction (or apparent increase for spatial considerations)	Years 1-20 Years 21-180	-7% -4%	-11% -12%	-8% -7%		-7% -4%	-11% -12%	-7% -4%	-11% -12%								
RUN277	Non-spatial	Years 1-20 Years 21-180	210,762 188,462	142,609 130,188	353,371 318,649	60% 59%	193,551 173,088	73,380 74,528	17,211 15,374	69,229 55,659	121,376	61,134	125,018	186,152	-14%	11%	26%	21%
RUN277-TOTCUT	Spatial (reduced deviations)	Years 1-20 Years 21-180	202,998 177,987	122,947 119,711	325,945 297,698	62% 60%	186,421 163,468	63,263 68,531	16,577 14,520	59,684 51,180	116,905	57,841	105,356	163,197	-17%	5%	6%	6%
	Spatial reduction (or apparent increase for spatial considerations)	Years 1-20 Years 21-180	-4% -6%	-14% -8%	-8% -7%		-4% -6%	-14% -8%	-4% -6%	-14% -8%								

* All harvest levels are reduced by within block retention and cull

** Primary and incidental harvest levels are determined by reducing the 180 year average harvest level by the appropriate spatial reduction
Primary conifer is coniferous harvest from C, CD, and DC stands, primary decid is deciduous harvest from D stands