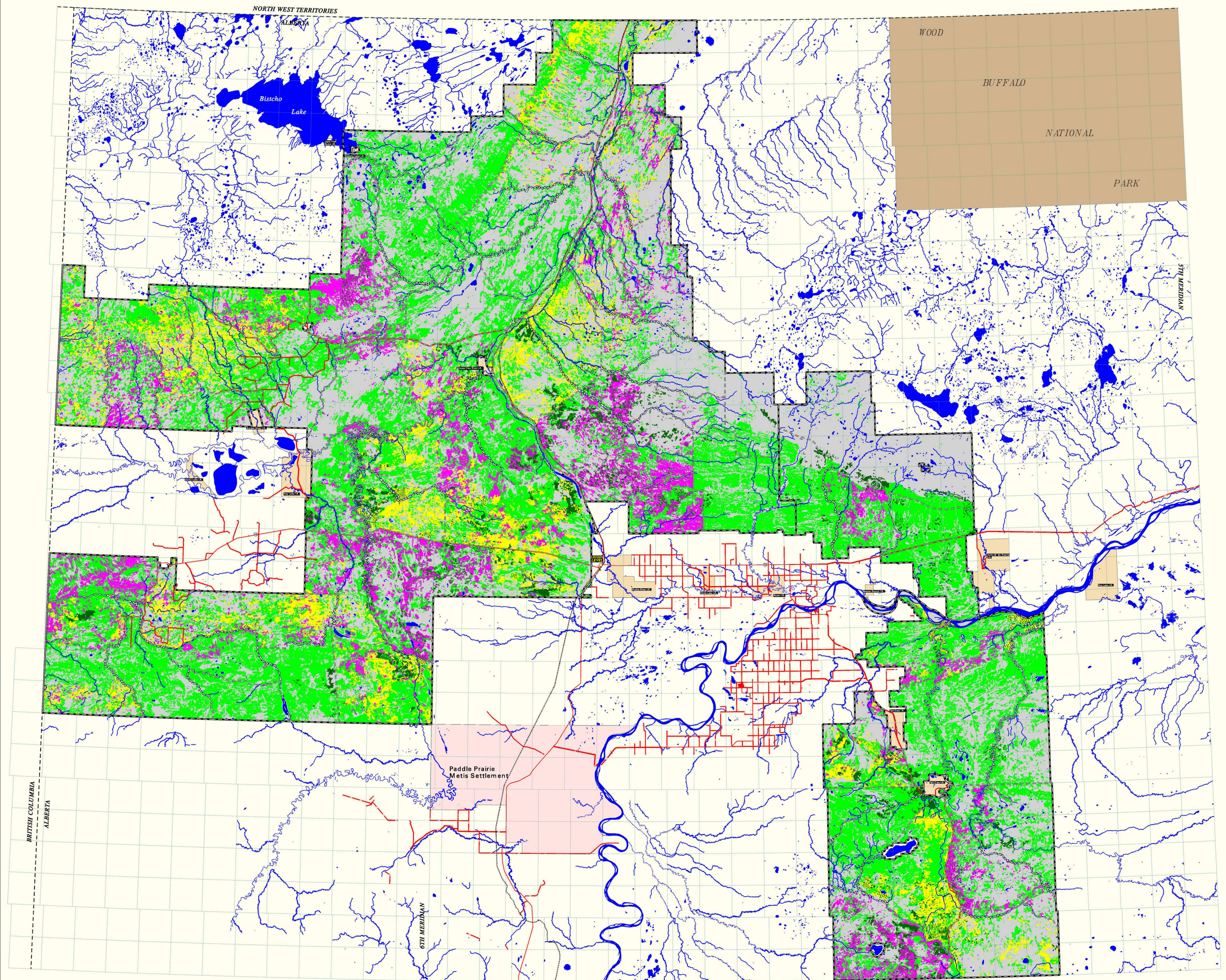


Rge 12 Rge 11 Rge 10 Rge 9 Rge 8 Rge 7 Rge 6 Rge 5 Rge 4 Rge 3 Rge 2 Rge 1 Rge 23 Rge 22 Rge 21 Rge 20 Rge 19 Rge 18 Rge 17 Rge 16 Rge 15 Rge 14 Rge 13 Rge 12 Rge 11 Rge 10 Rge 9 Rge 8 Rge 7 Rge 6 Rge 5 Rge 4 Rge 3 Rge 2 Rge 1



Rge 13 Rge 12 Rge 11 Rge 10 Rge 9 Rge 8 Rge 7 Rge 6 Rge 5 Rge 4 Rge 3 Rge 2 Rge 1 Rge 25 Rge 24 Rge 23 Rge 22 Rge 21 Rge 20 Rge 19 Rge 18 Rge 17 Rge 16 Rge 15 Rge 14 Rge 13 Rge 12 Rge 11 Rge 10 Rge 9 Rge 8 Rge 7 Rge 6 Rge 5 Rge 4 Rge 3 Rge 2 Rge 1

<p>PROVINCIAL INDEX</p>	<p>OPERATING AREA INDEX</p>	<p>NATURAL SUB-REGIONS</p>	<p>PLANIMETRIC LEGEND</p> <ul style="list-style-type: none"> Divided Highway Four Lane Highway Two Lane Highway High Grade Gravel Low Grade Gravel Railroad Indian Reserve Metis Settlement 	<p>STANDS SCHEDULED FOR HARVEST</p> <ul style="list-style-type: none"> Years 1-10 Years 11-20 <p>LANDBASE CATEGORIES</p> <ul style="list-style-type: none"> Net Landbase Not Selected For Harvest Cutblocks Net Landbase Deletions 	<p>HARVEST SIMULATION PARAMETERS</p> <p>Run No: 30c Landbase: Single Harvest Unit: FMA Flow Constraint: Dual Even Flow Regen. Strategy: Fully Stocked Planning Horizon (yrs): 200 Compartment Sequencing: ON Adjacency: OFF Conifer AAC: 1,810,000 m³/yr Deciduous AAC: 2,051,000 m³/yr</p>
--------------------------------	------------------------------------	-----------------------------------	--	---	--