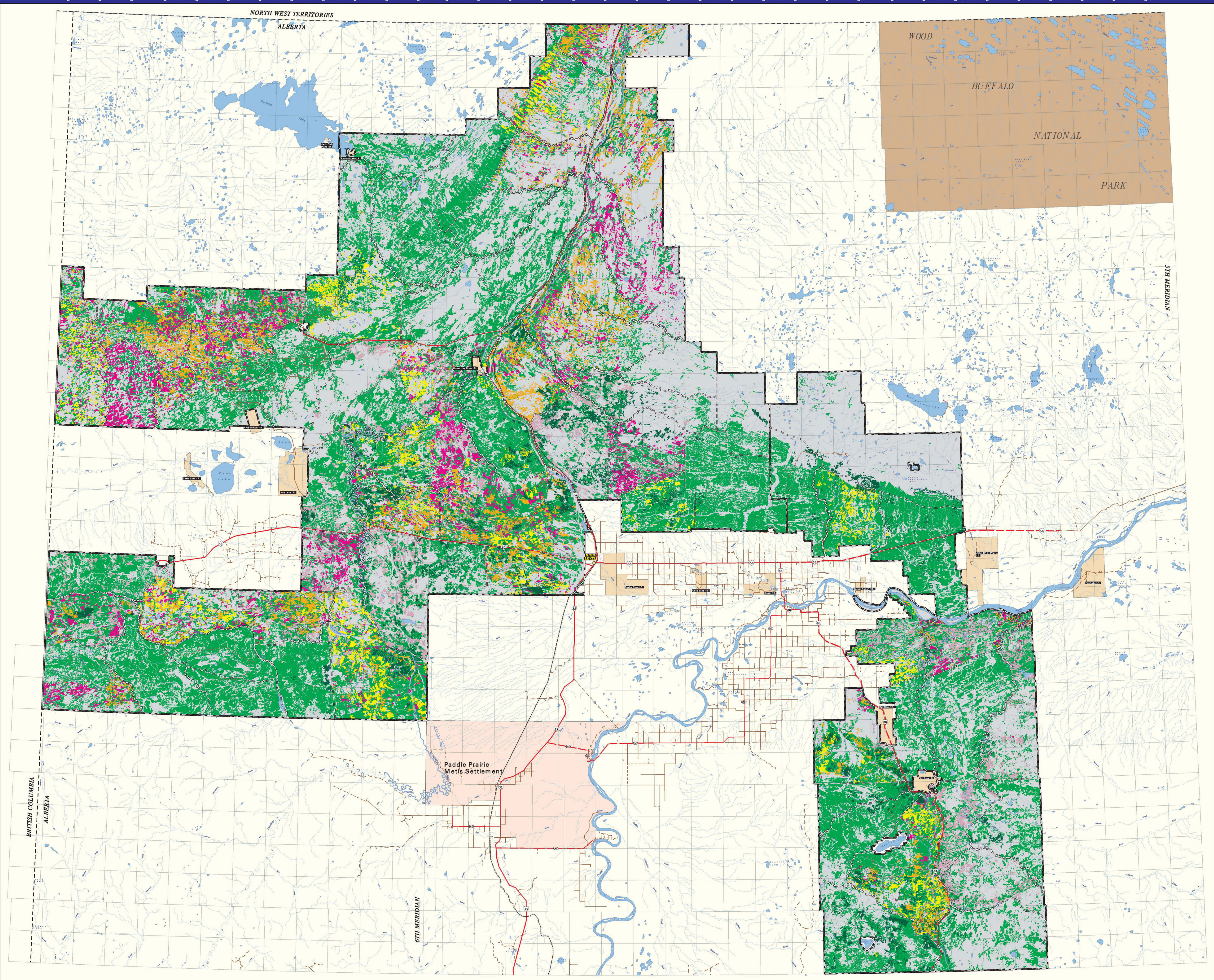
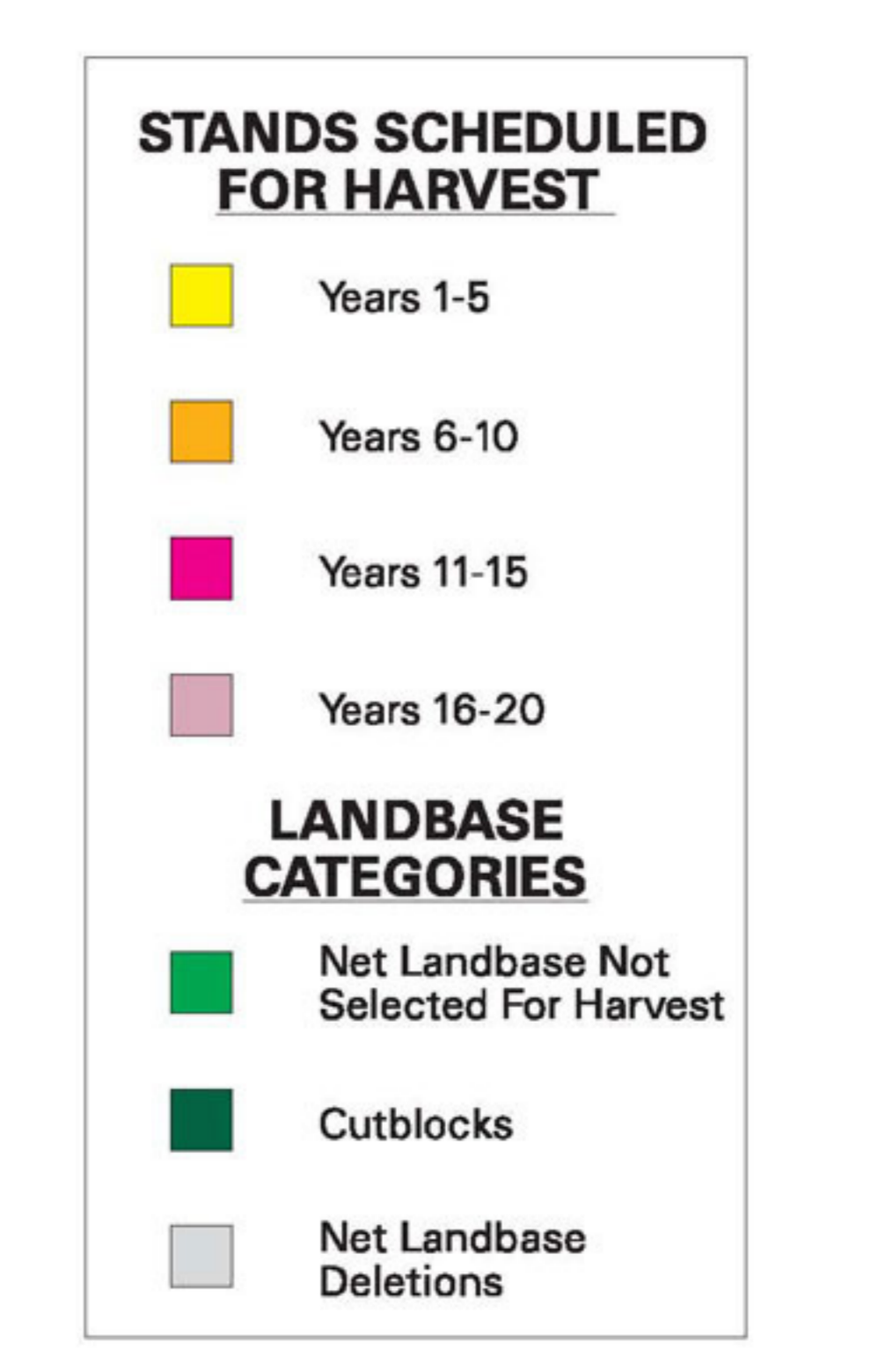
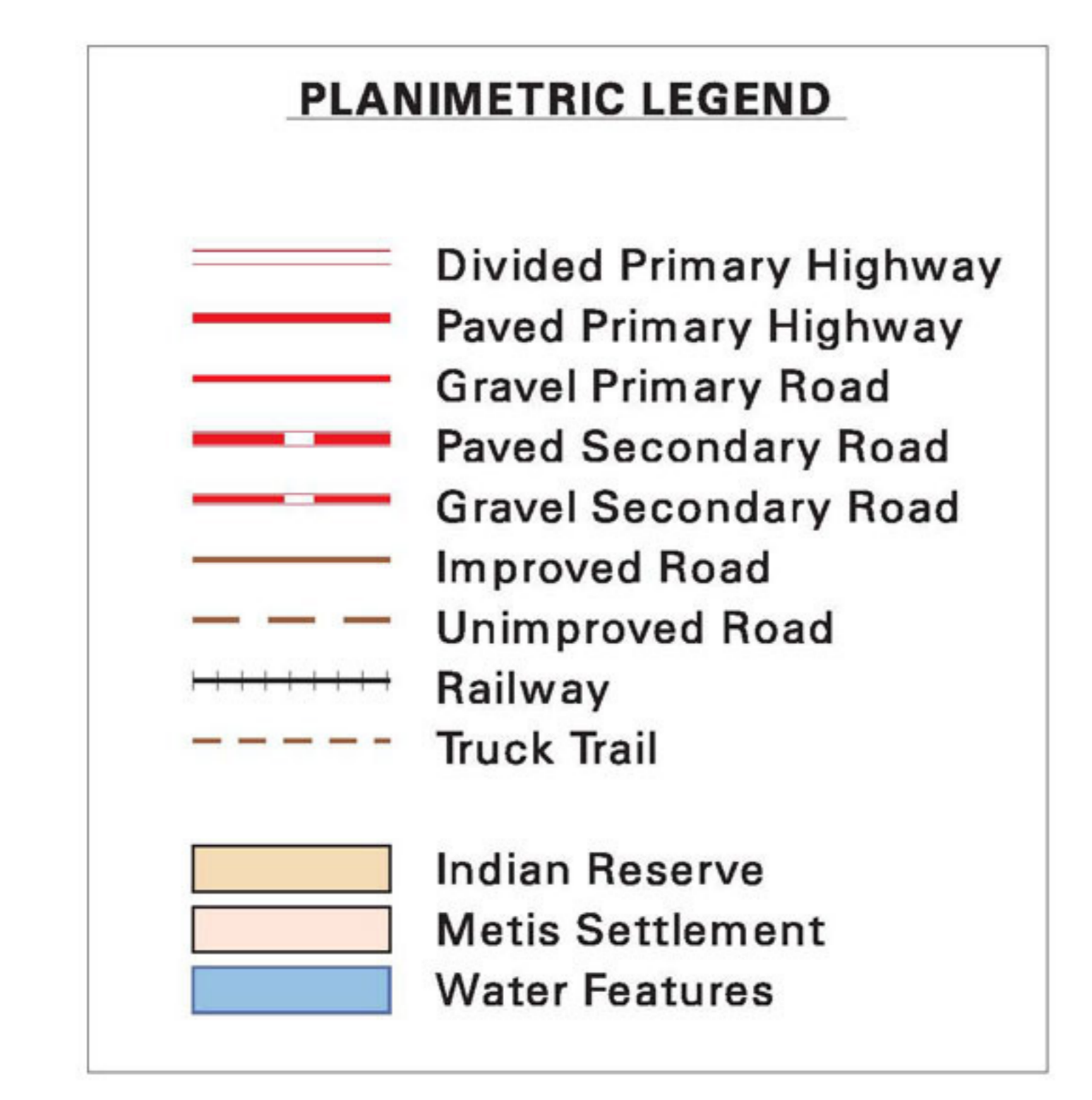
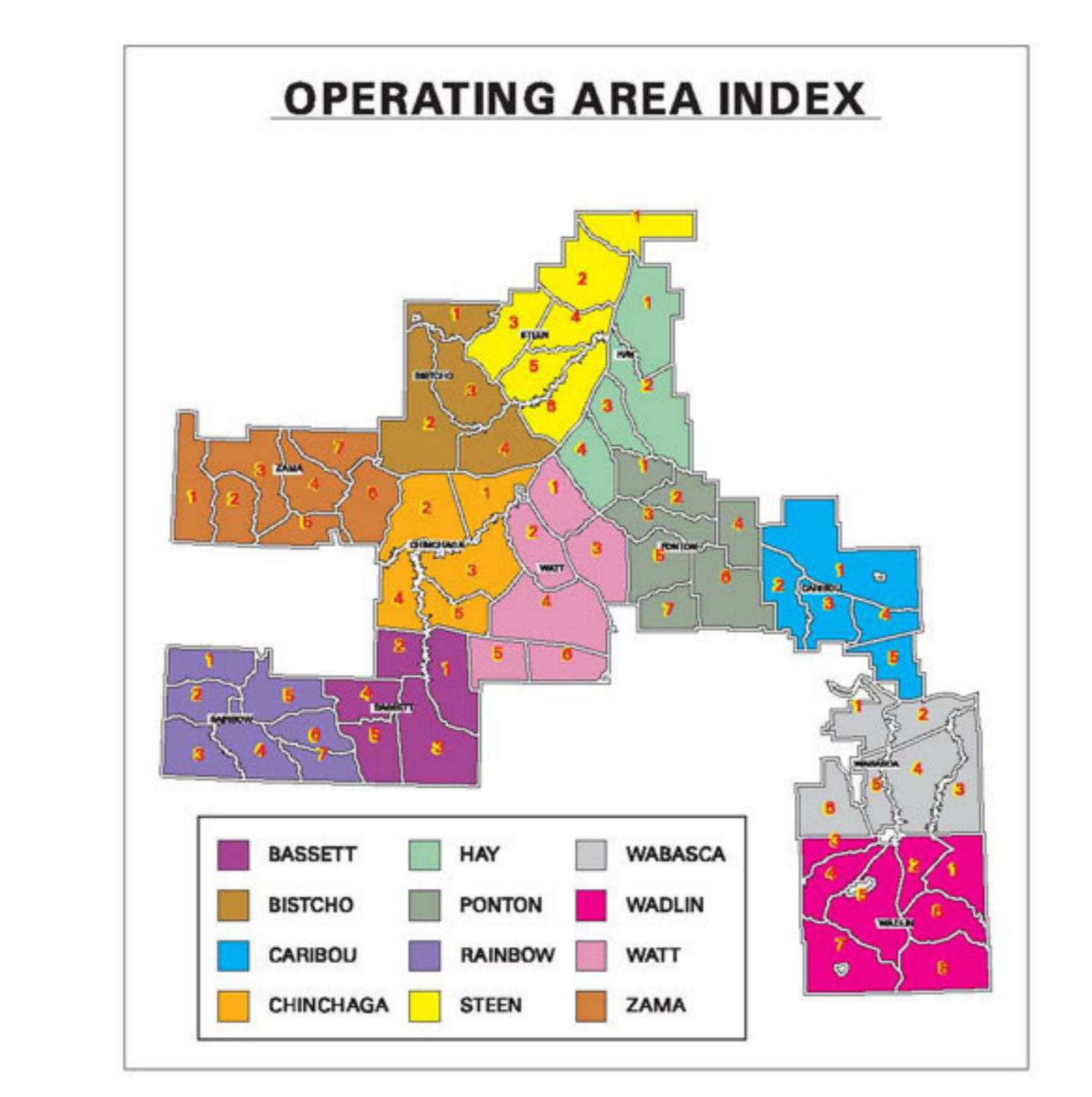
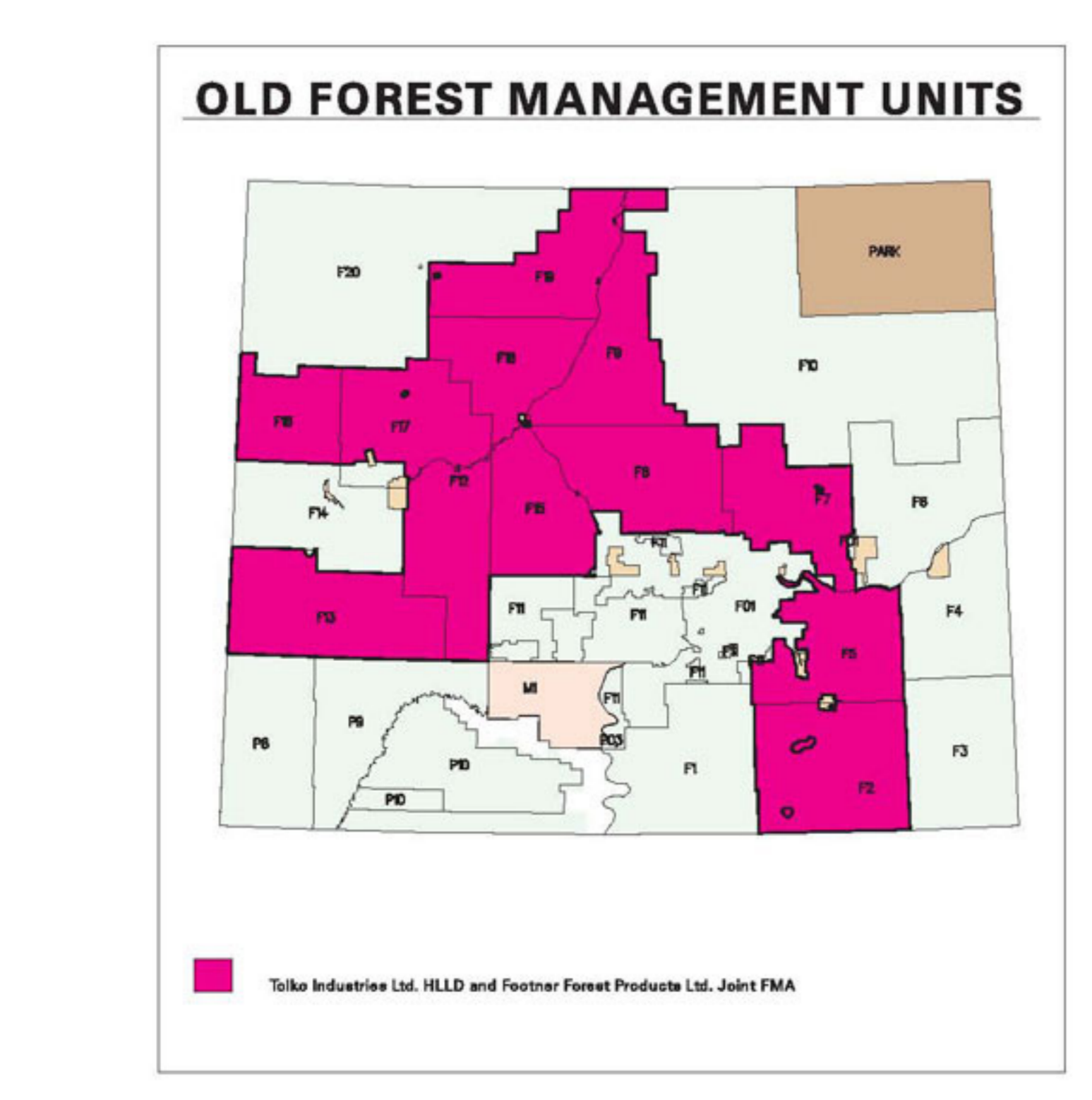
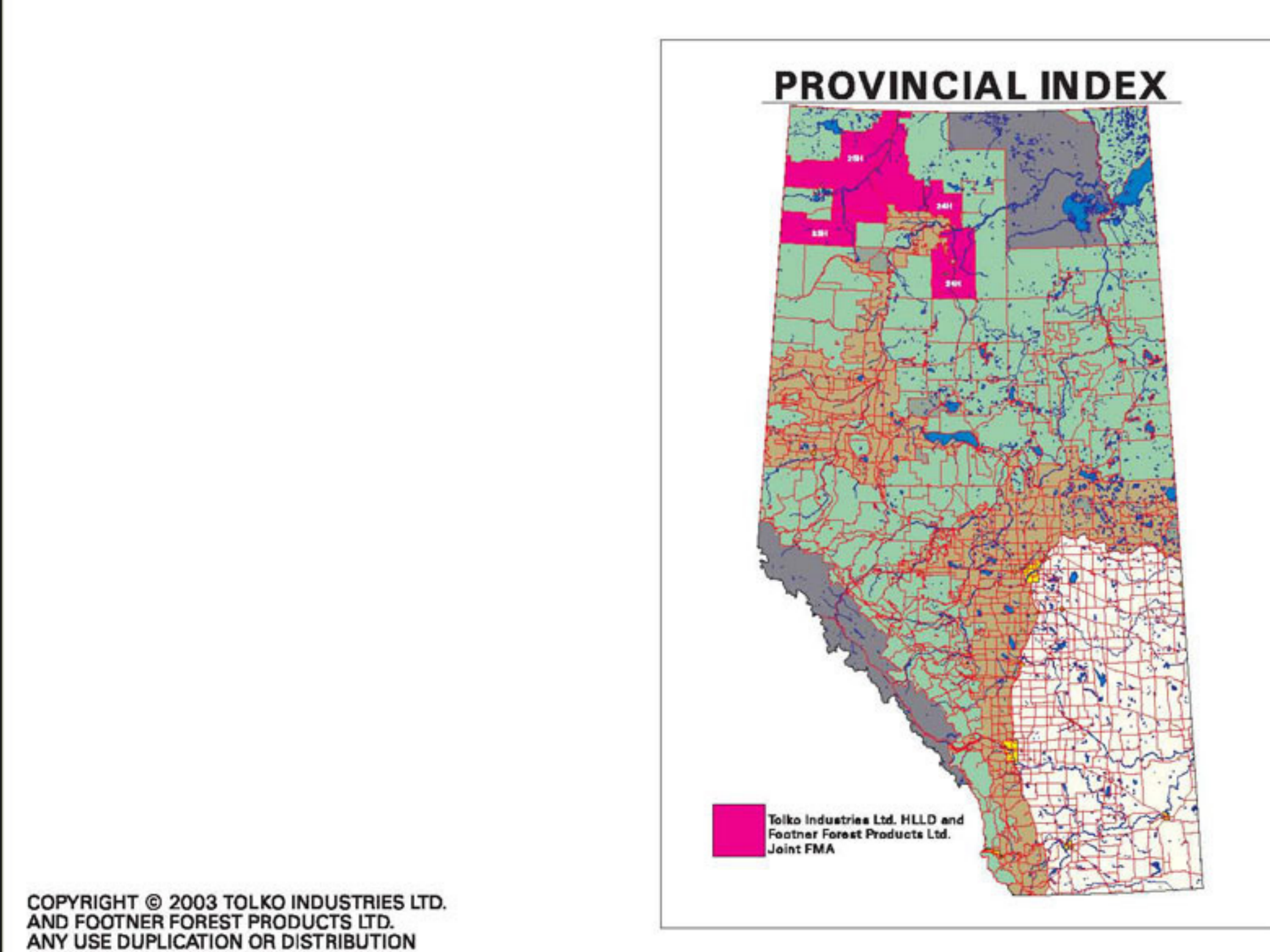


Rge 12 Rge 11 Rge 10 Rge 9 Rge 8 Rge 7 Rge 6 Rge 5 Rge 4 Rge 3 Rge 2 Rge 1 Rge 23 Rge 22 Rge 21 Rge 20 Rge 19 Rge 18 Rge 17 Rge 16 Rge 15 Rge 14 Rge 13 Rge 12 Rge 11 Rge 10 Rge 9 Rge 8 Rge 7 Rge 6 Rge 5 Rge 4 Rge 3 Rge 2 Rge 1



Rge 13 Rge 12 Rge 11 Rge 10 Rge 9 Rge 8 Rge 7 Rge 6 Rge 5 Rge 4 Rge 3 Rge 2 Rge 1 Rge 25 Rge 24 Rge 23 Rge 22 Rge 21 Rge 20 Rge 19 Rge 18 Rge 17 Rge 16 Rge 15 Rge 14 Rge 13 Rge 12 Rge 11 Rge 10 Rge 9 Rge 8 Rge 7 Rge 6 Rge 5 Rge 4 Rge 3 Rge 2 Rge 1



HARVEST SIMULATION PARAMETERS

Run No: ramp6
Landbase: Single
Harvest Unit: FMA
Flow Constraint: Ramp up-Dual Even Flow
Regen. Strategy: Fully Stocked
Planning Horizon (yrs): 200
Compartment Sequencing: ON
Adjacency: ON
Structure Retention: N/A
Planned Blocks: Sequenced
Conifer AAC: 1.20 -1.68 million m³/yr
Deciduous AAC: 1.00 -1.88 million m³/yr

