

Table No.

- 10. Population of Canada and Provinces on July 1, 1991-2008.....
- 11. Alberta Urban and Rural Population, 1976-2006.....
- 12. Alberta Employed Labour Force in Agri-Food Industries, 1991-2008.....
- 13. Selected Economic Indicators, Canada and Alberta, 1976-2008.....
- 14. Alberta Gross Domestic Product (GDP) for Agriculture Industries In Chained (2002) Dollars
and Nominal Dollars, 1999-2008.....
- 15. Capital Investment Expenditures in Alberta Agri-Food Industries, 1999-2008.....
- 16. Farm Bankruptcies, Canada and Provinces, 1991-2008.....
- 17. Alberta Average Farm Input Prices, 2007 and 2008
- 18. Alberta Agricultural Real Estate Average Value by C.L.I., 1989-2008.....
- 19. Average Alberta Agricultural Land Values by C.L.I. and Municipality, 2008.....

Table 10: Population of Canada and Provinces on July 1, 1991-2008

	Nfld.	P.E.I.	N.S.	N.B.	Que.	Ont.	Man.	Sask.	Alberta	B.C.	Yukon/ NWT (1)	Canada
Number of Persons												
1991r.....	579,644	130,369	914,969	745,567	7,067,396	10,431,316	1,109,604	1,002,713	2,592,306	3,373,787	89,749	28,037,420
1992r.....	580,109	130,827	919,451	748,121	7,110,010	10,572,205	1,112,689	1,003,995	2,632,672	3,468,802	92,383	28,371,264
1993r.....	579,977	132,177	923,925	748,812	7,156,537	10,690,038	1,117,618	1,006,900	2,667,292	3,567,772	93,716	28,684,764
1994r.....	574,466	133,437	926,871	750,185	7,192,403	10,819,146	1,123,230	1,009,575	2,700,606	3,676,075	94,669	29,000,663
1995r.....	567,397	134,415	928,120	750,943	7,219,219	10,950,119	1,129,150	1,014,187	2,734,519	3,777,390	96,852	29,302,311
1996r.....	559,698	135,737	931,327	752,268	7,246,897	11,082,903	1,134,196	1,018,945	2,775,133	3,874,317	98,797	29,610,218
1997r.....	550,911	136,095	932,402	752,511	7,274,611	11,227,651	1,136,128	1,017,902	2,829,848	3,948,583	99,306	29,905,948
1998r.....	539,843	135,804	931,836	750,530	7,295,935	11,365,901	1,137,489	1,017,332	2,899,066	3,983,113	98,324	30,155,173
1999r.....	533,329	136,281	933,784	750,601	7,323,250	11,504,759	1,142,448	1,014,524	2,952,692	4,011,375	98,243	30,401,286
2000r.....	527,966	136,470	933,821	750,517	7,356,951	11,683,290	1,147,313	1,007,565	3,004,198	4,039,230	98,409	30,685,730
2001r.....	522,033	136,663	932,454	749,801	7,396,331	11,896,663	1,151,439	1,000,221	3,058,017	4,076,264	99,134	31,019,020
2002r.....	519,531	136,876	935,015	749,331	7,441,076	12,091,029	1,156,613	996,801	3,128,364	4,098,178	100,842	31,353,656
2003r.....	518,520	137,221	937,491	749,389	7,485,838	12,242,273	1,163,819	996,483	3,183,396	4,122,396	102,844	31,639,670
2004r.....	517,447	137,674	939,376	749,369	7,535,929	12,390,599	1,173,566	997,447	3,239,471	4,155,170	104,628	31,940,676
2005r.....	514,363	138,055	937,941	747,960	7,581,911	12,528,480	1,178,301	993,579	3,322,200	4,196,788	105,631	32,245,209
2006r.....	510,313	137,920	938,010	745,674	7,631,552	12,665,346	1,184,031	992,122	3,421,253	4,243,580	106,273	32,576,074
2007r.....	506,459	138,118	936,039	745,370	7,686,038	12,793,572	1,193,514	999,697	3,510,892	4,310,305	107,368	32,927,372
2008p.....	507,895	139,818	938,310	747,302	7,750,504	12,928,996	1,207,959	1,015,985	3,585,142	4,381,603	107,875	33,311,389
% Change 2008/2007	0.3%	1.2%	0.2%	0.3%	0.8%	1.1%	1.2%	1.6%	2.1%	1.7%	0.5%	1.2%
% Share of Canada in 2008	1.5%	0.4%	2.8%	2.2%	23.3%	38.8%	3.6%	3.0%	10.8%	13.2%	0.3%	100.0%

(1) Includes Yukon, Northwest Territories and Nunavut.

Source: Statistics Canada Cat. No. 91-002-XPB, "Quarterly Demographic Statistics"

Table 11: Alberta Urban and Rural Population (1), 1976-2006

	Total Population	Total Urban (2)	Total Rural (3)
Number of Persons			
1976.....	1,838,035	1,379,170	458,870
1981.....	2,237,724	1,727,545	510,179
1986 (4).....	2,365,830	1,877,760	488,070
1991 (4).....	2,545,555	2,030,895	514,660
1996 (4).....	2,696,825	2,142,815	554,010
2001 (4).....	2,974,807	2,405,160	569,647
2006 (4).....	3,290,350	2,699,851	590,499
% Change From Previous Census Year			
1981.....	21.7	25.3	11.2
1986 (4).....	5.7	8.7	-4.3
1991 (4).....	7.6	8.2	5.4
1996 (4).....	5.9	5.5	7.6
2001 (4).....	10.3	12.2	2.8
2006 (4).....	10.6	12.3	3.7

(1) Statistics Canada conducts the Census of Population once every five years (beginning of June from 1976 to 1991 and mid-May from 1996 to 2006). The 2006 Census was conducted on May 16, 2006.

(2) Refers to persons living in a continuously built-up area having a population concentration of 1,000 or more and a population density of 400 or more per square kilometre based on the previous census.

(3) Refers to all persons living outside urban areas.

(4) Excludes incompletely enumerated Indian Reserves.

Source: Statistics Canada, Census of Population

Table 12: Alberta Employed Labour Force (1) in Agri-Food Industries, 1991-2008

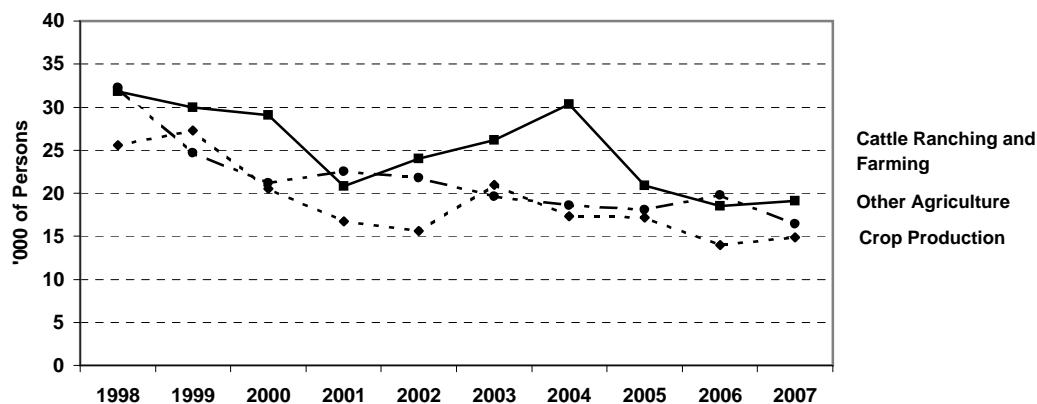
	Agriculture										Total Agri-Food Industries	
	Animal Production							Manufacturing				
	All Industries	Crop Production	Total	Cattle Ranching and Farming		Other Animal Production	Mixed Farming	Support Activities	Total Agriculture	All Manufacturing Industries		Food and Beverage
'000 of Persons												
1991.....	1,284.4	27.2	38.1	25.2	12.9	29.0	1.5	95.5	90.9	17.2	112.7	
1992.....	1,280.0	29.2	35.7	25.6	10.1	28.2	1.7	94.8	90.9	16.6	111.4	
1993.....	1,288.7	27.7	34.4	24.3	10.1	28.4	1.5	92.0	93.1	18.9	110.9	
1994.....	1,324.5	24.3	37.4	27.0	10.4	25.8	1.8	89.2	99.9	16.8	106.0	
1995.....	1,364.9	23.9	38.9	29.3	9.6	26.0	2.0	90.8	106.4	18.9	109.7	
1996.....	1,405.1	26.6	39.7	29.5	10.2	24.3	1.5	92.1	107.0	19.5	111.6	
1997.....	1,451.4	24.5	40.8	31.1	9.7	20.3	3.1	88.7	119.8	19.3	108.0	
1998.....	1,509.9	25.6	42.7	31.8	10.9	19.2	2.2	89.7	126.0	20.4	110.1	
1999.....	1,544.0	27.3	42.2	30.0	12.2	10.4	2.1	82.0	133.5	18.2	100.2	
2000.....	1,584.0	20.5	41.1	29.1	12.0	7.8	1.5	70.8	137.8	19.0	89.8	
2001.....	1,630.9	16.7	33.2	20.8	12.4	8.6	1.5	60.0	138.9	21.9	81.9	
2002.....	1,670.8	15.6	36.1	24.0	12.1	7.4	2.3	61.4	146.2	28.0	89.4	
2003.....	1,716.7	21.0	38.1	26.2	11.9	5.4	2.2	66.8	146.1	25.1	91.9	
2004.....	1,757.5	17.3	41.8	30.3	11.5	5.6	1.5	66.2	144.3	26.1	92.3	
2005.....	1,784.4	17.2	29.0	20.9	8.1	8.6	1.5	56.2	130.9	22.3	78.5	
2006.....	1,870.7	14.0	27.2	18.5	8.7	9.3	1.8	52.3	137.5	27.0	79.3	
2007.....	1,959.4	14.9	27.4	19.1	8.3	6.2	1.9	50.4	142.9	23.3	73.7	
2008p..	2,013.3	15.9	36.8	26.0	10.8	5.1	3.2	61.0	144.1	24.5	85.5	
% Share of All Industries in 2008												
	100.0%	0.8%	1.8%	1.3%	0.5%	0.3%	0.2%	3.0%	7.2%	1.2%	4.2%	

Note: Totals may not add up due to rounding.

(1) Annual averages for employed labour force refers to persons 15 years of age and over who (a) did any work during the reference period or (b) had a job but were not at work due to illness or disability; personal or family responsibilities; bad weather; labour disputes; vacation; or other reasons not specified. Work includes any work for pay or profit. It also includes unpaid family work which contributes directly to the operation of a farm, business or professional practice owned or operated by a related member of the household.

Source: Statistics Canada "Labour Force Survey"

Fig. 6 Employment in Alberta Agriculture Industries, 1998-2008



Source: Statistics Canada "Labour Force Survey"

Table 13: Selected Economic Indicators, Canada and Alberta, 1976-

	All Items Consumer Price Index (2002=100) (1)		Canada Interest Rates		Canada - United States Exchange Rate	
	Canada	Alberta	Bank Rate (2)	Prime Rate (3)	Canada\$ per US\$	US\$ per Canada\$
1976.....	31.1	-	9.29	10.04	0.9860	1.0142
1977.....	33.6	-	7.71	8.50	1.0634	0.9403
1978.....	36.6	-	8.98	9.69	1.1407	0.8767
1979.....	40.0	40.0	12.10	12.90	1.1714	0.8537
1980.....	44.0	44.1	12.89	14.25	1.1692	0.8553
1981.....	49.5	49.8	17.93	19.29	1.1989	0.8341
1982.....	54.9	55.4	13.96	15.81	1.2337	0.8105
1983.....	58.1	58.3	9.55	11.17	1.2324	0.8114
1984.....	60.6	59.8	11.31	12.06	1.2951	0.7722
1985.....	63.0	61.6	9.65	10.58	1.3655	0.7323
1986.....	65.6	63.7	9.21	10.52	1.3895	0.7197
1987.....	68.5	66.3	8.40	9.52	1.3260	0.7542
1988.....	71.2	68.1	9.69	10.83	1.2307	0.8125
1989.....	74.8	70.9	12.29	13.33	1.1840	0.8446
1990.....	78.4	75.0	13.05	14.06	1.1668	0.8571
1991.....	82.8	79.4	9.03	9.94	1.1457	0.8728
1992.....	84.0	80.6	6.78	7.48	1.2087	0.8273
1993.....	85.6	81.4	5.09	5.94	1.2901	0.7751
1994.....	85.7	82.6	5.77	6.88	1.3657	0.7322
1995.....	87.6	84.5	7.31	8.65	1.3724	0.7286
1996.....	88.9	86.4	4.53	6.06	1.3635	0.7334
1997.....	90.4	88.1	3.52	4.96	1.3846	0.7222
1998.....	91.3	89.2	5.10	6.60	1.4835	0.6741
1999.....	92.9	91.4	4.92	6.44	1.4857	0.6731
2000.....	95.4	94.5	5.77	7.27	1.4854	0.6732
2001.....	97.8	96.7	4.31	5.81	1.5488	0.6456
2002.....	100.0	100.0	2.71	4.21	1.5703	0.6368
2003.....	102.8	104.4	3.19	4.69	1.4010	0.7138
2004.....	104.7	105.9	2.50	4.00	1.3013	0.7685
2005.....	107.0	108.1	2.92	4.42	1.2114	0.8255
2006.....	109.1	112.3	4.31	5.81	1.1343	0.8816
2007.....	111.5	117.9	4.60	6.10	1.0740	0.9311
2008.....	114.1	121.6	3.21	4.73	1.0671	0.9371

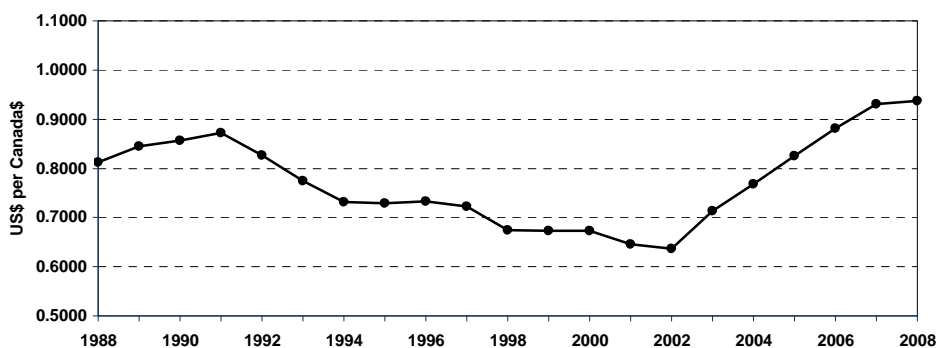
(1) The Consumer Price Index (CPI) measures the percentage change through time in the cost of purchasing a constant "basket" of goods and services representing the purchases by a particular population group in a specified time period. The All Items Index includes these components: food; shelter; household operations and furnishings; clothing and footwear; transportation; health and personal care; recreation; education and reading; and alcoholic beverages and tobacco products.

(2) The Bank Rate is the minimum rate at which the Bank of Canada makes short-term advances to the chartered banks.

(3) The Canada Prime Rate or the Chartered Bank Rate on Prime Business Loans is the rate charged to the most credit-worthy borrowers

Source: Statistics Canada Cat. No. 62-001-XPB, "The Consumer Price Index"; and Bank of Canada Review

Fig. 7 Canada - US Exchange Rate (US\$ per Canada\$), 1988-2008



Source: Bank of Canada Review

Table 14: Alberta Gross Domestic Product (GDP) for Agriculture Industries in Chained (2002) Dollars and Nominal Dollars, 1999-2008

	1999	2000	2001	2002	2003	2004r	2005r	2006r	2007r	2008p
At Basic Prices in Chained (2002) Dollars (1) (\$ Millions)										
All Alberta Industries	130,697.5	139,171.5	141,905.0	144,266.2	148,953.0	157,088.1	164,545.3	174,079.8	179,064.1	178,711.3
% Change From Previous Year	2.1	6.5	2.0	1.7	3.2	5.5	4.7	5.8	2.9	-0.2
Agriculture Industries	4,710.9	4,636.1	3,767.5	2,664.8	3,921.0	4,548.8	4,778.6	4,503.5	4,392.7	4,670.1
% Change From Previous Year	10.8	-1.6	-18.7	-29.3	47.1	16.0	5.1	-5.8	-2.5	6.3
Crop and Animal Production	4,648.3	4,571.9	3,701.1	2,595.7	3,844.7	4,480.9	4,697.8	4,425.6	4,318.2	4,587.6
% Change From Previous Year	11.0	-1.6	-19.0	-29.9	48.1	16.5	4.8	-5.8	-2.4	6.2
Support Activities for Agriculture	62.6	64.2	66.4	69.1	76.3	67.9	80.8	77.9	74.5	82.5
% Change From Previous Year	-1.9	2.6	3.4	4.1	10.4	-11.0	19.0	-3.6	-4.4	10.7
Support Activities for Crop Production	33.1	28.7	27.2	30.7	47.3	35.2	45.4	41.4	38.5	45.4
% Change From Previous Year	-0.3	-13.3	-5.2	12.9	54.1	-25.6	29.0	-8.8	-7.0	17.9
Support Activities for Animal Production	29.5	35.5	39.2	38.4	29.0	32.7	35.4	36.5	36.0	37.1
% Change From Previous Year	-3.6	20.3	10.4	-2.0	-24.5	12.8	8.3	3.1	-1.4	3.1
In Nominal Dollars (2) (\$ Millions)										
All Alberta Industries	111,505.9	139,045.0	148,393.3	144,266.2	163,676.2	183,009.4	212,773.0	-	-	-
% Change From Previous Year	9.2	24.7	6.7	-2.8	13.5	11.8	16.3	-	-	-
Agriculture Industries	2,898.8	2,819.6	3,175.2	2,664.8	3,211.9	3,732.6	3,041.0	-	-	-
% Change From Previous Year	2.5	-2.7	12.6	-16.1	20.5	16.2	-18.5	-	-	-
% Share of All Industries	2.6	2.0	2.1	1.8	2.0	2.0	1.4	-	-	-
Crop and Animal Production	2,846.0	2,764.4	3,116.2	2,595.7	3,135.4	3,661.3	2,953.0	-	-	-
% Change From Previous Year	2.6	-2.9	12.7	-16.7	20.8	16.8	-19.3	-	-	-
Support Activities for Agriculture	52.8	55.2	59.0	69.1	76.5	71.3	88.0	-	-	-
% Change From Previous Year	-0.4	4.5	6.9	17.1	10.7	-6.8	23.4	-	-	-
Support Activities for Crop Production	28.2	26.4	26.0	30.7	45.0	35.1	48.3	-	-	-
% Change From Previous Year	-1.1	-6.4	-1.5	18.1	46.6	-22.0	37.6	-	-	-
Support Activities for Animal Production	24.6	28.8	33.0	38.4	31.5	36.2	39.7	-	-	-
% Change From Previous Year	0.4	17.1	14.6	16.4	-18.0	14.9	9.7	-	-	-

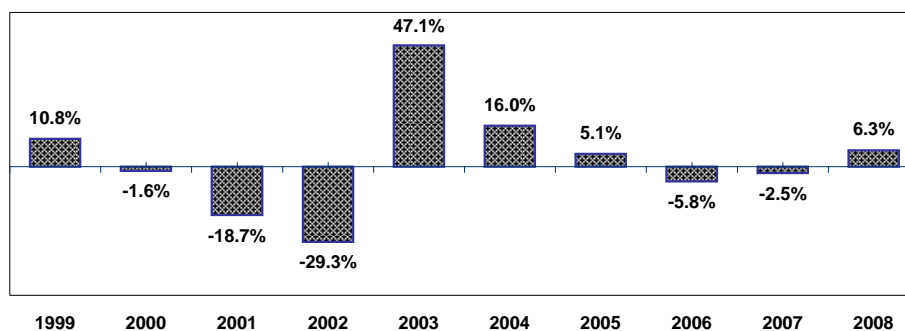
(1) The official measure of GDP published by Statistics Canada is expressed in Chained Fisher 2002 reference dollars. The Chained Fisher measure is an aggregation formula that more accurately weights the contribution of each industry in the total economy (or an aggregate of sum set of elemental industries) according to more current weights instead of weights from some fixed year in the past. To arrive at the Chained Fisher measure, a Chained index of change for each industry and for any chosen aggregate of industries is first derived, individually; the aggregates are not a simple sum of the component industries. This index is then converted to a dollar series by choosing a "reference year" (2002) for the dollar units. The dollar series is then built up by applying the index to the reference year dollar and thereby presenting the changes expressed in the index into dollars.

So, while the Chained Fisher measure provides a much better valuation of each industry in the current year, this measure does not come without its own set of drawbacks. One drawback is that time series expressed in Chained Fisher units cannot be added up. To obtain aggregates, summing of the components must be done at a much earlier phase in the calculation. For example, the total for crop and animal production is calculated as one estimation, then the separate totals for crop production and livestock production are estimated.

(2) Data in current dollars were not available from 2006 to 2008 at time of printing this publication.

Source: Statistics Canada CANSIM Table Number 379-0025

Fig. 8 Alberta GDP for Agriculture Industries at Basic Prices in Chained (2002) Dollars - Annual Per Cent Change, 1999-2008



Source: Statistics Canada CANSIM Table Number 379-0025

Table 15: Capital Investment Expenditures in Alberta Agri-Food Industries
(1),

	Manufacturing Industries									Total Agri-Food Industries (3)
	All Alberta Industries	Total				Agriculture Industries (2)				
		Manuf.	Food	Beverage	Food and Beverage	Crop Production	Animal Production	Support Services	Total Agriculture	
\$ Millions										
1999.....	31,684.1	2,482.5	163.2	25.9	189.1	418.3	420.9	18.4	857.6	1,046.7
2000.....	37,474.3	2,713.8	189.0	20.0	209.0	457.1	478.7	11.8	947.6	1,156.6
2001.....	42,238.2	1,843.2	112.4	28.4	140.8	381.6	461.9	11.1	854.6	995.4
2002.....	42,643.6	1,573.2	93.0	22.9	115.9	446.4	485.8	13.3	945.5	1,061.4
2003.....	44,743.9	1,567.3	138.4	28.4	166.8	417.8	404.2	13.1	835.1	1,001.9
2004.....	50,807.7	1,745.5	137.7	36.3	174.0	486.6	473.8	10.8	971.2	1,145.2
2005.....	65,033.9	2,467.4	151.3	40.0	191.3	455.6	501.9	26.9	984.4	1,175.7
2006.....	76,923.7	2,566.0	147.9	25.5	173.4	415.4	413.3	16.3	845.0	1,018.4
2007r.....	83,932.5	2,917.0	115.7	29.5	145.2	570.3	554.6	39.5	1,164.4	1,309.6
2008p.....	86,981.3	3,098.9	118.0	28.5	146.5	489.3	516.2	24.0	1,029.5	1,176.0
% Share of All Industries in 2008										
	100.0	3.6	0.1	0.0	0.2	0.6	0.6	0.0	1.2	1.4
% Change From Previous Year										
2000.....	18.3	9.3	15.8	-22.8	10.5	9.3	13.7	-35.9	10.5	10.5
2001.....	12.7	-32.1	-40.5	42.0	-32.6	-16.5	-3.5	-5.9	-9.8	-13.9
2002.....	1.0	-14.6	-17.3	-19.4	-17.7	17.0	5.2	19.8	10.6	6.6
2003.....	4.9	-0.4	48.8	24.0	43.9	-6.4	-16.8	-1.5	-11.7	-5.6
2004.....	13.6	11.4	-0.5	27.8	4.3	16.5	17.2	-17.6	16.3	14.3
2005.....	28.0	41.4	9.9	10.2	9.9	-6.4	5.9	149.1	1.4	2.7
2006.....	18.3	4.0	-2.2	-36.3	-9.4	-8.8	-17.7	-39.4	-14.2	-13.4
2007r.....	9.1	13.7	-21.8	15.7	-16.3	37.3	34.2	142.3	37.8	28.6
2008p.....	3.6	6.2	2.0	-3.4	0.9	-14.2	-6.9	-39.2	-11.6	-10.2

(1) Statistics Canada conducts The Capital and Repair Expenditures Survey (CES) to generate data on investment made in Canada in all types of industries. Information on capital expenditures provides a useful indication of market conditions in the economy as a whole and in specific industries. Expenditures planned also provide an indication of the views of management regarding future market demands in relation to present productive capacity.

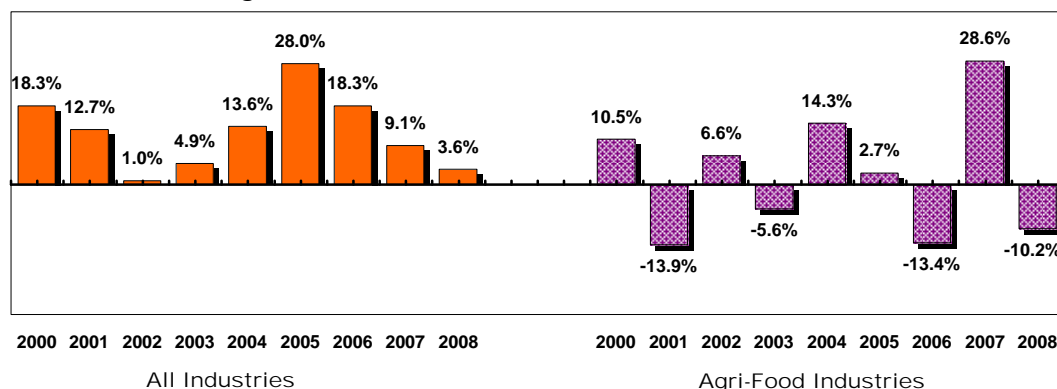
Capital investment expenditures refers to the cost of procuring, constructing and installing new durable plant and machinery and equipment, whether for replacement of worn or obsolete assets, as additions to existing assets or for lease or rent to others. Also included are all capitalized costs such as feasibility studies, architectural, legal, installation and engineering fees, the value of capital assets put in place by firms either by contract or with their own labour force, as well as the capitalized interest charges on loans with which capital projects are financed. Gross outlays have been reported without any deduction for scrap, trade-in value of old assets and include any grants and/or subsidies received.

(2) Agriculture industries refer to establishments growing crops, raising animals or producing animal products as well as establishments providing support services for crops and livestock production. Note: The figures shown above for "Support Services" include estimates for the forestry industry (separate data for agriculture are not available due to confidentiality).

(3) Agri-food industries is the sum of food and beverage manufacturing industries plus agriculture industries.

Source: Statistics Canada Cat. No. 61-205-XIB, "Private and Public Investment in Canada, Intentions 2009"

Fig. 9 Alberta Capital Investment Expenditures in Agri-Food Industries - Annual Per Cent Change, 2000-2008



Source: Statistics Canada Cat. No. 61-205-XIB, "Private and Public Investment in Canada, Intentions 2009"

Table 16: Farm Bankruptcies, Canada and Provinces, 1991-2008

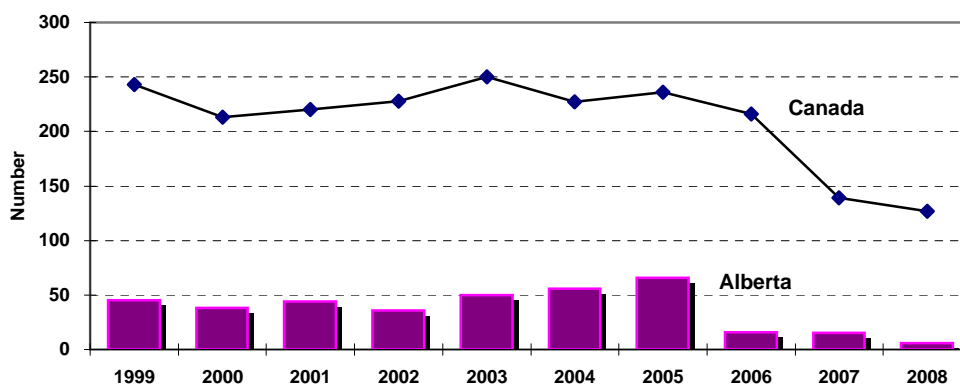
	British Columbia							Other Canada (1)
	Canada	Alberta	Sask.	Manitoba	Ontario	Quebec		
	Number							
1991.....	441	71	15	224	21	15	82	13
1992.....	383	73	10	191	15	21	63	10
1993.....	349	80	5	166	13	22	49	14
1994.....	308	68	11	132	7	15	67	8
1995.....	273	87	12	94	10	23	33	14
1996.....	275	75	1	95	24	17	54	9
1997.....	243	61	4	76	19	15	54	14
1998.....	244	55	5	92	27	12	47	6
1999.....	243	45	6	99	29	17	42	5
2000.....	213	38	14	76	18	20	40	7
2001.....	220	44	6	64	19	23	57	7
2002.....	228	36	16	53	43	38	33	9
2003.....	250	50	19	65	29	27	51	9
2004.....	227	56	4	64	27	34	31	11
2005.....	236	66	6	75	26	25	33	5
2006.....	216	16	8	79	36	29	37	11
2007.....	139	15	1	49	14	21	30	9
2008.....	127	6	6	34	22	31	20	8

Note: Starting in 2003, bankruptcies are based on the North American Industrial Classification System (NAICS). Data for prior years are based on the 1980 Standard Industrial Classification System (SIC).

(1) Includes Atlantic Provinces, Yukon, Northwest Territories and Nunavut.

Source: Industry Canada, Office of the Superintendent of Bankruptcy Canada

Fig. 10 Canada and Alberta Farm Bankruptcies, 1999-2008



Source: Industry Canada, Office of the Superintendent of Bankruptcy Canada

Table 17: Alberta Average Farm Input Prices (Dollars), 2007 and 2008

Item	Specifications	2007r	2008	% Chg. '08/'07
		Dollars		
Lumber, construction grade.....	2x6, spruce, thousand board feet (M)	497.01	428.46	-13.8
Lumber, rough grade.....	2x8, spruce, thousand board feet (M)	622.83	616.06	-1.1
Sheathing, plywood.....	unsanded, spruce, 9.6 mm, 4'x8' sheet	15.15	14.16	-6.5
Fence posts.....	standard grade, treated, 3"-4" x 7' post	3.93	3.90	-0.9
Concrete, ready-mix.....	20 MPA strength, cubic metre	167.11	181.41	8.6
Nails.....	standard grade, 4" spiral, 50 lb box	65.36	64.86	-0.8
Pipe, plastic.....	1" diameter, 75 PSI, 100' coil	59.31	59.63	0.5
Rods, steel reinforcing.....	10 mm x 6 metre	5.90	6.52	10.5
Barbed wire.....	12 gauge, double strand, 40 kg spool	53.34	57.67	8.1
Grain bin, hopper-bottom.....	3500 bushel capacity	12,087.28	12,894.69	6.7
Truck tires, 1st line, blackwall.....	LT285-70R-17 radial, enviro tax inc'd	309.13	312.83	1.2
Storage battery.....	12 volts, 24 series, 525 cranking amps	88.10	99.28	12.7
V-Belt, implement.....	1/2" X 70" fibre belt	13.15	13.56	3.1
Antifreeze.....	ethylene glycol, anti-corrosive, 4 litre	12.84	14.19	10.5
Mechanical repairs.....	farm machinery, per hour	86.52	94.62	9.4
Baler twine.....	plastic, 28,000' bale	29.80	29.62	-0.6
General farm labour.....	full time, without board, per month	2,321.27	2,466.74	6.3
Tractor.....	105-130 hp, 6 cylinder diesel, fwd (Changed from 100-110 hp to 105-130 hp July 2007)	93,572.57 (1)	93,415.42	N/A
Tractor.....	325-375 hp, 6-8 cylinder diesel, 4wd (Changed from 300-325 hp to 325-375 hp July 2007)	216,580.43 (1)	217,969.24	N/A
Combine, self-propelled.....	diesel, 250-310 hp, 250-315 bu hopper (Changed from 250-300 hp, 210-240 bu hopper to 250-310 hp, 250-315 bu hopper July 2007)	277,988.76 (1)	272,938.49	N/A
Air drill.....	40'-42', with packer wheels, 325 bu tank	135,162.23	138,270.74	2.3
Sprayer.....	pull-type, 800-900 gallon tank, 90'-100' boom	35,661.86	37,945.89	6.4
Round baler.....	pull-type, PTO driven, 5'x6' bale	40,358.12	38,973.24	-3.4
Double disc.....	heavy duty tandem, 19'-21', 22" blades	32,894.84	33,120.15	0.68
Truck, 3/4 ton.....	V-8, 5.4L or 5.9L, 4x4, 4 speed auto trans.	36,666.47	36,927.95	0.7
Calf starter ration.....	pellets, 13-20%, tonne (bulk) (Changed from 20-24% to 13-20% July 2007)	443.14 (1)	477.48	N/A
Dairy supplement.....	pellets, 32%, tonne (bulk)	504.03	586.50	16.36
Feedlot supplement.....	pellets, 32%, tonne (bulk)	345.52	394.60	14.2
Hog grower ration.....	15-17%, tonne (bulk) (Changed from 15% to 15-17% July 2007)	350.28 (1)	386.00	N/A
Swine supplement.....	pellets, 35-40%, tonne (bulk) (Changed from 40% to 35-40% July 2007)	541.63 (1)	642.33	N/A
Broiler grower complete feed.....	18-20%, tonne (bulk)	422.63	426.67	1.0
Cattle mineral, salt free.....	18% phosphorus:18% calcium, 25 kg bag	25.36	31.77	25.3
Feed barley.....	No. 1, farm gate, bushel	3.36	3.87	15.0
Feed wheat.....	No. 1, farm gate, bushel	4.19	5.60	33.8
Hay, good quality.....	baled, over 50% alfalfa, farm gate, ton	61.30	70.29	14.7
Fertilizer, Urea.....	46-0-0, tonne, bulk	546.67	731.37	33.8
Fertilizer, Monammonium Phosphate.....	11-51-0, tonne, bulk	570.15	1,158.88	103.26
Fertilizer, Anhydrous Ammonia.....	82-0-0, tonne, bulk (applicator inc'd)	877.16	1,166.59	33.0
Refine Extra.....	granular, 320 g	247.68	256.98	3.8
Assert 300 SC.....	liquid, 10.8 litres	259.40	261.71	0.9
Roundup WeatherMax.....	liquid, 10 litres	129.54	144.50	11.5
Penicillin G, injectable.....	short-acting, 300 mg/ml, 250 ml	13.43	13.90	3.5
Vitamin A D with E, injectable.....	IU/cc: A-500,000, D-75,000, E-50, 250 ml	25.31	25.58	1.0
Seed; wheat.....	certified No. 1, 100 kg, bulk	33.31	44.67	34.1
Seed; barley.....	certified No. 1, 100 kg, bulk	31.02	38.22	23.2
Seed; conventional canola.....	certified No. 1, treated, 100 kg, bagged	1,005.59	929.72	-7.5
Seed; herbicide tolerant canola.....	certified No. 1, treated, 100 kg, bagged	1,213.80	1,311.51	8.0
Gasoline, marked.....	regular unleaded, 100 litres	84.42	99.28	17.6
Diesel fuel, marked.....	100 litres (provincial allowance deducted)	74.58	98.23	31.7
Propane.....	liquefied, bulk, 100 litres	51.20	63.74	24.5
Natural gas.....	excl. service or delivery charge, GJ	6.37	7.60	19.2
Electricity.....	farm use, excl. service/delivery, 100 kWh	8.99	9.93	10.5
Oil, for diesel engines.....	CD-30W, enviro tax inc'd, 5 litres	14.74	15.67	6.3

Note: The prices reported are simple averages for the province and are based on a survey conducted in the first week of each month.

(1) Specifications changed July 2007 - average based on July to December 2007

N/A - Comparison is not appropriate due to change in specifications

Source: Agricultural Input Monitoring System (AIMS), Alberta Agriculture and Rural Development, Statistics and Data Development Branch

Table 18: Alberta Agricultural Real Estate Average Value by C.L.I.,
1989-2008

	C.L.I.1	C.L.I.2	C.L.I.3	C.L.I.4	C.L.I.5	C.L.I.6	Other	All Classes
	\$/Acre							
1989.....	672.86	471.51	402.18	301.17	326.90	318.84	301.01	391.74
1990.....	678.68	506.60	421.63	333.38	355.23	323.02	268.06	418.29
1991.....	710.00	463.00	408.00	312.00	341.00	302.00	350.00	393.00
1992.....	667.00	492.00	425.00	317.00	356.00	359.00	378.00	409.00
1993.....	732.00	539.00	449.00	330.00	335.00	422.00	356.00	428.00
1994.....	880.72	558.67	483.44	360.66	409.33	465.98	413.43	473.18
1995.....	878.13	551.92	493.92	384.91	387.95	493.47	416.08	472.43
1996.....	976.83	529.69	503.85	437.92	505.03	579.50	425.32	509.27
1997.....	1,097.73	716.10	597.77	523.39	564.06	428.78	476.28	609.88
1998.....	1,300.78	712.02	632.44	494.84	590.18	605.05	480.82	622.36
1999.....	1,208.37	778.85	620.95	552.65	611.20	798.97	452.06	656.56
2000.....	1,326.87	794.98	700.56	572.23	567.81	611.78	635.81	689.45
2001.....	1,276.16	863.72	697.43	648.13	723.85	637.01	626.64	736.85
2002.....	1,263.10	866.51	736.03	630.60	866.32	766.27	576.80	757.20
2003.....	1,376.18	886.11	707.05	651.10	704.06	749.72	650.00	745.73
2004.....	1,562.15	898.62	821.06	724.67	821.37	829.06	706.59	832.40
2005.....	1,639.73	1,053.44	870.29	785.77	927.51	909.98	920.24	923.02
2006.....	1,548.10	1,141.28	972.29	819.55	947.49	869.91	920.26	982.10
2007.....	1,416.58	1,296.84	1,154.32	1,041.84	1,021.92	1,192.61	1,157.82	1,151.05
2008.....	1,832.08	1,377.87	1,229.46	1,043.72	1,136.08	1,278.02	1,027.71	1,200.63

Canada Land Inventory Classification

Class 1: Soils with no significant limitations in use for crops.

Class 2: Soils with moderate limitations that restrict the range of crops or require moderate conservation practices.

Class 3: Soils with moderately severe limitations that restrict the range of crops or require special conservation practices.

Class 4: Soils with severe limitations that restrict the range of crops or require special conservation practices or both.

Class 5: Soils that are unsuitable for annual cultivation. These soils could be improved for the production of perennial forages and pasture.

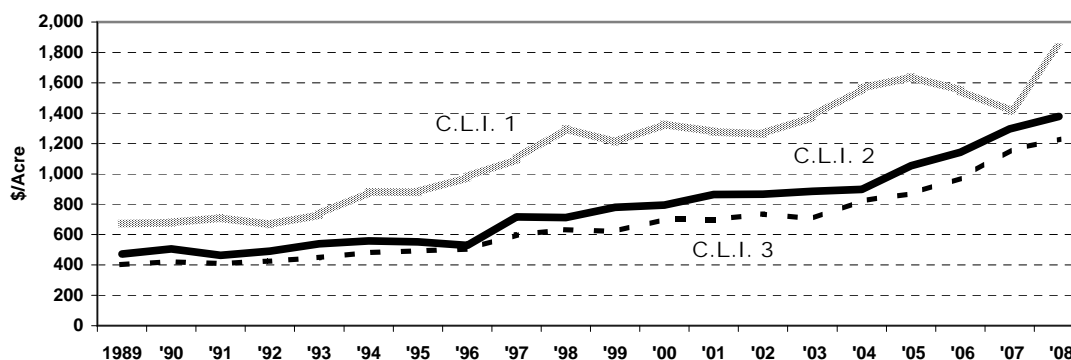
Class 6: Soils that have some natural grazing potential but where improvement practices are not feasible.

Other: (Classes 7, 8 and 9) Soils that have no capability for arable culture or permanent pasture; are organic and frequently found in the wooded regions of the province; or are unclassified due to a lack of C.L.I. Maps of the area at a 1:250,000 scale or lower.

Note: Average value for **All Classes** is weighted by the number of acres transacted in each C.L.I. Class.

Source: Alberta Registries; and Alberta Agriculture and Rural Development, Statistics and Data Development Branch

Fig. 11 Alberta Average Agricultural Real Estate Values, 1989-2008



Source: Alberta Registries; and Alberta Agriculture and Rural Development, Statistics and Data Development Branch

Table 19: Average Alberta Agricultural Land Values by C.L.I. and Municipality, 2008

	C.L.I. 1	C.L.I. 2	C.L.I. 3	C.L.I. 4	C.L.I. 5	C.L.I. 6	Other (1)	All Classes
	\$/Acre							
Beaver County.....	-	1,153.32	860.52	925.22	2,251.78	-	993.43	1,076.39
Birch Hills County.....	-	761.68	990.58	521.80	-	-	816.70	836.27
Brazeau County.....	-	-	1,104.52	1,574.13	2,042.61	-	-	1,625.54
Cardston County.....	-	1,956.18	657.88	-	3,083.45	1,793.40	-	1,814.58
Clear Hills County.....	-	338.98	945.45	634.06	919.48	-	458.76	693.42
Clearwater County.....	-	-	1,957.80	2,128.07	2,031.32	1,259.10	2,098.52	2,043.24
County of Athabasca No. 12.....	-	-	812.27	916.92	1,150.95	-	1,115.82	955.22
County of Barrhead No. 11.....	-	2,366.24	1,215.18	1,441.41	881.37	-	1,300.74	1,404.93
County of Camrose No. 22.....	2,396.30	1,542.23	1,219.81	926.39	1,710.22	1,571.04	1,112.63	1,513.05
County of Forty Mile No. 8.....	1,785.57	2,276.84	858.56	968.24	556.73	2,877.27	-	1,161.23
County of Grande Prairie No. 1.....	-	1,379.77	1,025.16	951.36	898.39	-	1,386.14	1,128.38
County of Lethbridge No. 26.....	-	1,274.69	1,917.23	646.74	-	800.38	789.69	1,138.42
County of Minburn No. 27.....	1,250.99	1,000.20	1,281.31	737.56	-	-	-	1,044.34
County of Newell No. 4.....	2,127.75	1,427.69	779.18	1,524.91	1,499.62	-	-	1,605.30
County of Paintearth No. 18.....	-	631.04	1,100.07	976.88	559.10	550.43	-	996.86
County of St. Paul No. 19.....	-	1,081.64	1,040.56	1,010.92	866.28	1,045.25	-	995.25
County of Stettler No. 6.....	-	1,334.04	1,033.86	1,288.16	725.84	1,534.71	1,164.30	1,133.77
County of Thorhild No. 7.....	-	2,039.50	1,258.65	742.98	-	1,900.23	781.43	1,220.84
County of Two Hills No. 21.....	1,241.78	914.90	793.30	841.90	-	-	-	866.16
County of Vermilion River No. 24.....	-	1,294.74	1,055.10	1,187.75	-	-	-	1,177.03
County of Warner No. 5.....	-	1,091.16	1,862.36	654.60	1,261.17	-	874.34	1,402.22
County of Wetaskiwin No. 10.....	1,337.21	1,730.62	1,914.49	1,537.52	1,814.52	-	1,398.02	1,622.24
Cypress County.....	3,190.56	2,048.22	754.98	1,169.39	2,053.39	-	-	1,467.87
Flagstaff County.....	-	1,648.48	1,108.17	863.09	-	938.14	1,771.31	1,253.90
Kneehill County.....	1,672.66	1,131.63	2,127.32	1,376.09	1,957.80	-	-	1,796.92
Lac La Biche County.....	-	-	-	1,356.77	1,082.25	-	862.63	1,217.18
Lac Ste. Anne County.....	-	1,094.98	1,445.95	1,364.20	909.67	-	999.03	1,241.79
Lacombe County.....	-	2,246.17	2,217.07	1,863.09	1,795.03	1,623.77	1,949.21	2,094.49
Lamont County.....	1,244.76	1,587.24	2,086.04	1,767.02	2,494.86	-	-	1,852.13
Leduc County.....	1,450.85	1,780.88	1,665.07	73.36	1,314.25	-	1,273.32	1,507.69
M.D. of Acadia No. 34.....	-	-	875.59	276.07	1,200.95	1,401.11	-	917.73
M.D. of Big Lakes.....	-	1,161.47	608.76	905.65	-	-	678.76	762.62
M.D. of Bonnyville No. 87.....	-	-	1,031.01	1,167.12	1,764.29	2,473.00	2,486.17	1,408.58
M.D. of Fairview No. 136.....	-	1,115.61	1,018.85	740.26	1,094.61	-	937.76	1,055.94
M.D. of Foothills No. 31.....	-	1,891.67	2,024.51	625.49	-	-	-	1,812.79
M.D. of Greenview No. 16.....	-	873.59	978.44	801.85	1,703.81	-	81.31	913.85
M.D. of Lesser Slave River No. 124.....	-	-	1,606.44	755.30	664.53	509.85	797.77	813.53
M.D. of Northern Lights No. 22.....	-	712.16	624.12	676.33	-	2,182.97	431.88	683.48
M.D. of Peace River No. 135.....	-	-	1,376.82	-	-	-	-	1,376.82
M.D. of Pincher Creek No. 9.....	-	1,672.29	3,002.37	2,413.83	2,249.88	1,896.93	-	2,160.71
M.D. of Provost No. 52.....	-	-	778.72	440.54	1,137.85	369.28	-	597.94
M.D. of Rocky View No. 44.....	161.34	174.04	854.70	781.87	2,501.97	-	153.25	833.05
M.D. of Smoky River No. 130.....	-	837.99	1,114.79	661.78	-	-	1,003.63	963.66
M.D. of Spirit River No. 133.....	-	1,086.39	523.58	-	1,013.46	-	934.94	826.26
M.D. of Taber.....	2,873.61	1,746.17	1,862.00	2,246.70	1,048.00	-	-	1,976.47
M.D. of Wainwright No. 61.....	707.20	1,450.45	1,033.83	615.22	-	1,346.76	2,614.06	1,000.12
M.D. of Willow Creek No. 26.....	-	1,725.88	1,901.50	2,767.81	2,223.98	1,601.26	2,225.20	1,929.86
Mackenzie County.....	-	-	587.47	636.65	543.34	-	456.73	610.57
Mountain View County.....	2,546.31	-	2,261.44	1,767.02	2,402.44	3,102.73	2,185.85	2,385.06
Northern Sunrise County.....	-	777.97	777.46	1,188.44	-	-	498.57	729.72
Parkland County.....	-	-	1,892.04	1,826.17	2,449.29	-	950.25	1,932.13
Ponoka County.....	-	1,874.95	2,066.57	766.23	1,004.39	2,414.19	2,625.86	1,696.30
Red Deer County.....	2,137.11	2,272.44	2,171.00	1,836.67	1,888.99	625.49	-	2,079.67
Saddle Hills County.....	-	587.36	717.25	669.68	377.63	-	670.66	660.33
Smoky Lake County.....	-	1,248.81	1,199.84	827.25	583.63	499.62	968.29	931.13
Special Area 2 Hanna.....	-	-	-	513.24	253.37	183.06	-	358.95
Special Area 3 Oyen.....	-	-	432.15	823.45	1,117.42	1,131.70	-	851.75
Special Area 4 Consort.....	-	-	406.57	472.08	191.23	220.37	-	270.14
Starland County.....	-	1,255.68	1,270.59	870.40	997.88	-	779.16	1,041.09
Strathcona County.....	-	-	-	-	-	1,234.40	-	1,234.40
Sturgeon County.....	1,783.35	1,501.07	1,794.25	3,309.86	-	2,814.72	1,873.59	1,972.49
Vulcan County.....	-	1,858.31	1,898.20	1,346.22	800.28	1,317.04	-	1,665.27
Westlock County.....	-	1,656.78	1,552.63	1,201.67	1,693.35	868.35	931.89	1,312.00
Wheatland County.....	-	2,106.79	1,899.06	1,699.50	1,864.03	1,862.85	-	1,854.72
Woodlands County.....	-	-	755.86	1,112.11	824.01	603.90	1,523.35	916.48
Yellowhead County.....	-	1,448.49	1,636.54	1,092.14	663.68	829.45	1,698.95	1,237.93
Alberta Average.....	1,832.08	1,377.87	1,229.46	1,043.72	1,136.08	1,278.02	1,027.71	1,200.63

C.L.I. - Canada Land Inventory Note: All Classes average value is weighted by the number of acres transacted in each C.L.I. Class.

(1) Includes parcels that were predominantly C.L.I.7, C.L.I.8, or C.L.I. 9.

Source: Alberta Registries; and Alberta Agriculture and Rural Development, Statistics and Data Development Branch