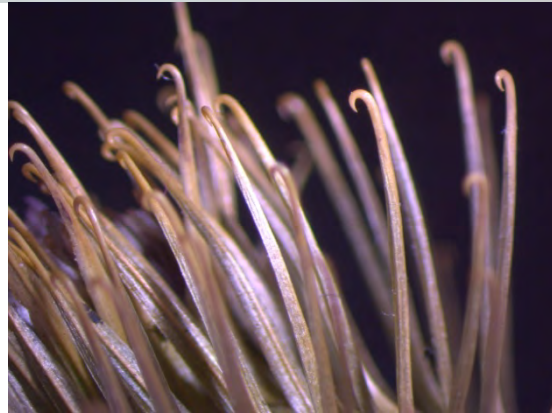


Lesser Burdock (*Arctium minus*)

Description

Lesser Burdock is a tall biennial, reaching as much as 3 m. The fleshy tap-root can grow up to 1m long. The stout, grooved, rough stem has multiple branches. Basal leaf stems are hollow. It has large (up to 60 cm) alternating, heart shaped leaves that have a long petiole, have very wavy margins and are pubescent on the underside. The flowers are purple, sessile or short stalked. The flower head is surrounded by a whorls of bracts, each curving to form a Velcro like hook, allowing them to be carried long distances on the fur of animals.



Key Identifiers

- ✓ Large plant and leaves
- ✓ Lower leaf stalks are hollow
- ✓ Whorl of bracts under 2.5cm in diameter
- ✓ Sessile or short stalked flowers
- ✓ Flowers spread out along stem with very few branches
- ✓ Velcro like hooks on bracts

Location in Canada

Lesser Burdock occurs in all Canadian Provinces from Newfoundland to British Columbia. Sometimes grown for medicinal purposes.

Resources

<http://www.agf.gov.bc.ca/cropprot/weedguid/burdock.htm>

<http://www.invasiveplantatlas.org/subject.html?sub=5140>

Similar species

Great Burdock (*Arctium lappa*) lower leaf stalks are solid and flower heads are more than 2.5 cm across

Woolly Burdock (*Arctium tomentosum*) flower heads are less than 2.5 cm across, densely cobwebby and flowers clumped along stem with branches in groups



Great Burdock, Lesser Burdock, Woolly Burdock