

Table No.

1 Selected Farm Income Statistics, Canada and Provinces, 2002-2006

2 Farm Cash Receipts by Type, Alberta and Canada, 2005 and 2006

3 Alberta Farm Cash Receipts by Type, 1977-2006

4 Alberta Farm Cash Receipts From the Sale of Crops, 1977-2006

5 Alberta Farm Cash Receipts From the Sale of Livestock, 1977-2006

6 Alberta Farm Operating Expenses and Depreciation, 1977-2006

7 Alberta Net Income From Farming Operations, 1977-2006.....

8 Current Value of Alberta Farm Capital and Value Per Acre of Farm Land and Buildings, 1977-2006.....

9 Alberta Farm Debt Outstanding by Lender at December 31, 1977-2006

Measures of Net Farm Income (1)

The agriculture economic statistics program uses three aggregate measures of net farm income:

Net cash income measures farm business cash flow (gross revenue minus operating expenses) generated from the production of agricultural goods. Net cash income represents the amount of money available for debt repayment, investment or withdrawal by the owner.

Realized net income (RNI) measures the financial flows, both monetary (cash income) and non-monetary (depreciation and income-in-kind), of farm businesses. Similar to net cash income, realized net income represents the net farm income from transactions in a given year, regardless of the year the agricultural goods were produced.

Total net income measures the financial flows and stock changes of farm businesses. Total net income values agriculture economic production during the year that the agricultural goods were produced. It represents the return to owner's equity, unpaid labour, management and risk.

Components of Net Farm Income Measures

Farm cash receipts include revenues from the sale of agricultural commodities, program payments from government agencies, and payments from private crop and livestock insurance programs. Receipts are recorded in the calendar year (January-December) when the money is paid (cash basis) to farmers. Farm to farm sales are excluded. They are assumed to cancel each other out, and have no net impact.

Farm operating expenses represent business costs incurred by farm businesses for goods and services used in the production of agricultural commodities. Expenses, which are recorded when the money is disbursed by the farmer, include property taxes, custom work, livestock purchases, rent, fertilizer and lime, pesticides, machinery and building repairs, fuel for heating and machines, wages, interest and business share of insurance premiums.

Income-in-kind measures the value of the agricultural goods produced on farms and consumed by farm operator families. It is included to measure total farm production. There is no monetary disbursement related to income-in-kind. It is calculated using Statistics Canada estimates of per capita food consumption, coupled with Census (2) measurements of the farm population and the average prices that producers would have received in the marketplace.

Depreciation charges account for the economic depreciation or for the loss in fair market value of the capital assets of the farm business. There is no monetary disbursement associated with depreciation. Calculated on farm buildings, farm machinery, and the farm business share of autos, trucks and the farm home, depreciation is generally considered to be the result of aging, wear and tear, and obsolescence. It represents a decrease in the potential economic benefits that can be generated by the capital asset.

Value of inventory change (VIC) measures the dollar value of the physical change in producer-owned inventories. This concept is used to value total agricultural economic production. To calculate VIC, the change in producer-owned inventories (between the end and the beginning of a calendar year) is first derived and then multiplied by the average annual crop prices or value per animal. This calculation is different from the financial or accounting book value approach, which values the beginning and ending stocks, and then derives the change.

(1) Source: Adapted from Agriculture and Agri-Food Canada and Statistics Canada, *Understanding Measurements of Farm Income*, Publication No. 2060/B and Catalogue No. 21-525-XIE, November 2000, Section 1 "Agriculture Economic Statistics Program Measures".
 (2) Statistics Canada, Census of Population

Alberta Farm Income, 2006

Farm Cash Receipts

In 2006, Alberta's total farm cash receipts (FCR) was practically unchanged at \$7.8 billion and the fifth highest on record. Down marginally by 0.7 per cent from 2005, the decline stemmed from lower livestock market receipts and direct program payments to producers more than offsetting an appreciable increase in crop market receipts. Unlike FCR, farm market receipts for the province (crop and livestock receipts excluding program payments) increased for the third consecutive year, rising 1.7 per cent to \$6.9 billion, from \$6.7 billion in 2005. As well, these receipts were the fourth highest on record, and 1.5 per cent above the average for the previous five years (2001-2005).

Following a decline in 2005, crop market receipts rebounded in 2006, increasing 7.6 per cent to \$2.6 billion, from \$2.4 billion in 2005. In general, the growth in receipts was due to increased marketings, along with stronger prices for some principal crops. Canola receipts jumped 33.8 per cent to a record \$991.0 million, displacing the previous record of \$881.4 million in 1998. The sharp increase stemmed from higher marketings (up 30.0 per cent) and prices (up 2.9 per cent). With respect to wheat, higher marketings pushed receipts up by 1.9 per cent to \$810.6 million (\$795.7 million in 2005). Barley receipts fell 6.7 per cent to \$133.0 million (\$142.5 million in 2005), as both prices and marketings declined. Also, oats receipts were down 16.1 per cent to \$33.4 million (\$39.8 million in 2005), the result of substantially lower marketings.

Livestock market receipts were slightly lower in 2006, falling 1.5 per cent to \$4.3 billion, from \$4.4 billion in 2005, marking the first decline since 2003. The slippage was due mainly to lower receipts for hogs, dairy, poultry, and eggs. Most livestock receipts were down from year earlier levels due to lower marketings and/or prices. More specifically, hog receipts declined 8.9 per cent to \$495.3 million (\$543.8 million in 2005), while dairy receipts fell 4.2 per cent to \$382.1 million (\$398.7 million in 2005). For poultry and eggs, receipts were down 2.0 per cent to \$207.2 million (\$211.5 million in 2005). On a positive note, cattle and calf receipts increased in 2006, rising 0.5 per cent or \$15.7 million to \$3.0 billion as a result of marginally higher marketings and prices. As well, sheep and lamb receipts increased 8.9 per cent to \$19.6 million (\$18.0 million in 2005), due to stronger prices.

Direct Program Payments

Direct program payments to Alberta producers declined 15.4 per cent in 2006 to \$945.1 million, from \$1.1 billion in 2005. This was mainly the result of the winding down of some major programs, including bovine spongiform encephalopathy (BSE) and Net Income Stabilization Account (NISA), now replaced by the Canadian Agricultural Income Stabilization (CAIS) program. NISA withdrawals declined 33.4 per cent to \$62.7 million, from \$94.1 million in 2005, while BSE payments were almost totally phased out. Moderating the decline in total program payments were higher payments for crop and hail insurance, up 49.6 per cent to \$221.6 million (\$148.1 million in 2005), and CAIS payments (including the CAIS Inventory Transition Initiative), which rose 5.8 per cent to \$475.6 million, from \$449.6 million in 2005.

Farm Operating Expenses and Net Farm Income

In 2006, Alberta producers spent an estimated \$6.7 billion in farm operating expenses (net of rebates), up 3.6 per cent from \$6.5 billion in 2005. Expenses were impacted during the year by many factors, such as inflation, rising interest rates and energy costs, and the rapid appreciation of the Canadian dollar against the U.S. dollar. Costs for several major expense items increased, including commercial feed (up 6.7 per cent to \$1.1 billion), machinery fuel and repairs (up 4.1 per cent to \$1.0 billion), interest (up 16.7 per cent to \$555.8 million), cash wages, room and board (up 4.0 per cent to \$568.9 million), and fertilizer and lime (up 2.4 per cent to \$634.1 million). Moderating the overall increase was a decline in livestock and poultry purchases (a major expense item), which fell 5.9 per cent to \$742.3 million.

With lower FCR and higher operating expenses, net cash income (FCR less operating expenses) fell 21.0 per cent in 2006 to \$1.1 billion, from \$1.4 billion in 2005. Realized net income (RNI), the sum of net cash income and income-in-kind (\$36.6 million) less depreciation (a non-cash cost of \$1.2 billion), was negative \$16.1 million, down from \$271.5 million in 2005. When RNI was adjusted for value of inventory change (both crops and livestock), the resulting total net income was negative \$360.6 million (compared with \$561.6 million in 2005). Just to note, livestock and crop inventories (notably canola) fell in 2006, due to increased marketings coupled with lower production.

Farm Debt and Capital Values

Total farm debt outstanding as at December 31, 2006 was a record \$11.0 billion, up 5.5 per cent from \$10.4 billion in 2005. In all, chartered banks were owed \$4.4 billion by Alberta producers (40.4 per cent of the total farm debt), down 1.0 per cent from \$4.5 billion in 2005. The next largest group of lenders after chartered banks was provincial government agencies such as the Agricultural Financial Services Corporation. This group accounted for \$2.5 billion (22.7 per cent) of total debt owed by producers in 2006, up from \$2.3 billion (21.6 per cent) in 2005. Federal government agencies such as the Farm Credit Corporation followed with a total of \$2.2 billion in loans to Alberta producers in 2006 (19.7 per cent of total debt), up from

\$1.9 billion in 2005 (18.2 per cent of total debt). Credit Unions were also an important credit source, accounting for \$713.5 million worth of loans in 2006, up 5.9 per cent from \$673.5 million in 2005.

In 2006, the total value of Alberta farm capital (machinery and equipment, land and buildings, and livestock and poultry) was a record \$60.5 billion. This was up 4.1 per cent from \$58.1 billion in 2005 and marked the third successive record high. The value of land and buildings increased 3.6 per cent to \$46.0 billion (\$44.4 billion in 2005), while machinery and equipment was up slightly by 0.9 per cent to \$9.1 billion (\$9.0 billion in 2005). With regard to the value of livestock and poultry, Statistics Canada has noted that “valuing the on-farm inventories of livestock has proven challenging since May 2003 when trade restrictions imposed as a result of bovine spongiform encephalopathy created uncertainty in all livestock markets”. Despite this challenge, the value of Alberta livestock and poultry was estimated at \$5.5 billion in 2006, up 14.6 per cent from \$4.8 billion in 2005.

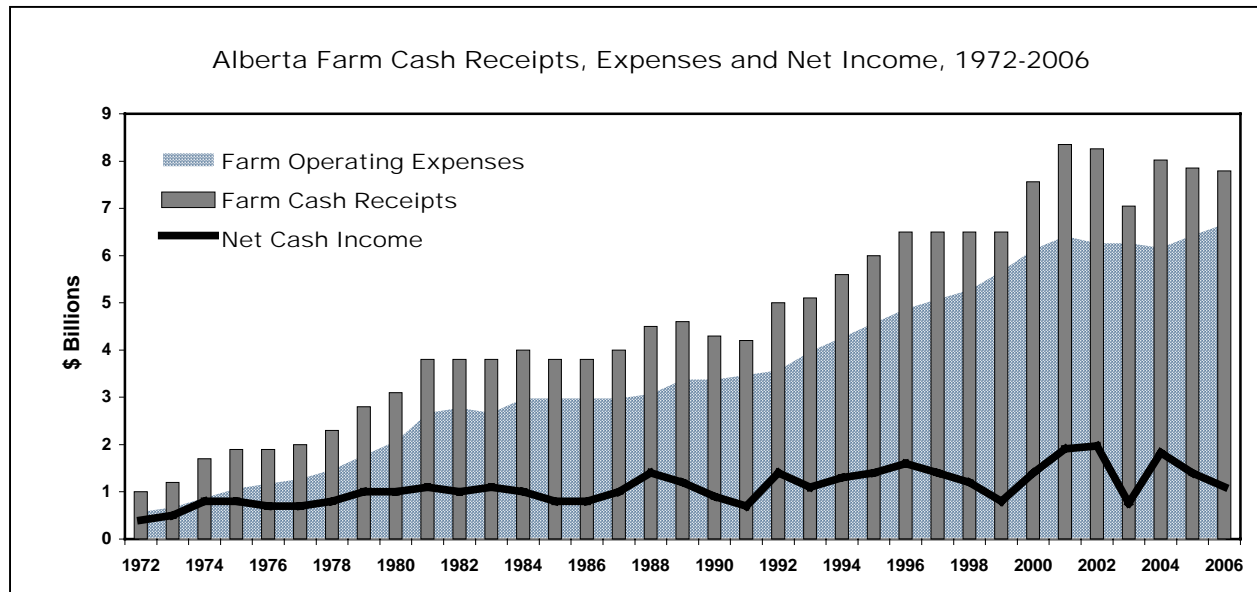


Table 1: Selected Farm Income Statistics, Canada and Provinces, 2002-2006

	Canada	Alberta	Sask.	Manitoba	British Columbia	Ontario	Quebec	Atlantic Provinces
\$'000								
Total Farm Cash Receipts (Market Receipts plus Program Payments)								
2002.....	36,075,277	8,262,351	6,460,836	3,848,306	2,194,984	8,503,906	5,527,067	1,277,827
2003r.....	34,419,826	7,048,793	5,812,928	3,605,900	2,283,276	8,448,126	5,947,422	1,273,381
2004r.....	36,458,435	8,023,915	5,949,657	3,852,686	2,401,739	8,616,978	6,305,250	1,308,210
2005r.....	36,798,628	7,854,045	6,262,549	3,804,926	2,390,445	8,944,607	6,189,169	1,352,887
2006p.....	37,014,256	7,796,488	6,632,992	3,685,874	2,342,236	8,926,977	6,252,057	1,377,632
Total Farm Cash Receipts - % Share of Canada								
2002.....	100.0	22.9	17.9	10.7	6.1	23.6	15.3	3.5
2003r.....	100.0	20.5	16.9	10.5	6.6	24.5	17.3	3.7
2004r.....	100.0	22.0	16.3	10.6	6.6	23.6	17.3	3.6
2005r.....	100.0	21.3	17.0	10.3	6.5	24.3	16.8	3.7
2006p.....	100.0	21.1	17.9	10.0	6.3	24.1	16.9	3.7
Crop Market Cash Receipts								
2002.....	14,454,970	2,136,646	3,747,216	1,912,848	1,034,444	3,617,968	1,413,568	592,280
2003r.....	13,400,716	1,971,402	2,938,781	1,700,093	1,142,284	3,735,407	1,428,451	484,298
2004r.....	14,434,436	2,600,331	3,274,566	1,783,637	1,202,488	3,596,441	1,458,388	518,585
2005r.....	13,481,153	2,371,069	3,134,809	1,285,530	1,096,809	3,622,277	1,440,650	530,009
2006p.....	14,482,106	2,551,378	3,636,866	1,275,343	1,086,684	3,821,883	1,506,706	603,246
Livestock and Livestock Products Market Cash Receipts								
2002.....	18,191,366	5,086,794	1,709,760	1,716,495	1,129,625	4,262,530	3,645,484	640,678
2003r.....	16,170,994	3,709,380	1,374,232	1,597,690	1,081,586	4,127,282	3,643,750	637,074
2004r.....	17,161,734	3,980,896	1,485,373	1,638,784	1,011,699	4,346,144	4,012,054	686,784
2005r.....	18,394,053	4,366,007	1,804,508	1,820,668	1,173,408	4,521,850	3,999,178	708,434
2006p.....	17,959,991	4,299,995	1,728,934	1,784,444	1,150,406	4,442,960	3,849,170	704,082
Total Farm Market Receipts (Crops plus Livestock and Livestock Products)								
2002.....	32,646,336	7,223,440	5,456,976	3,629,343	2,164,069	7,880,498	5,059,052	1,232,958
2003r.....	29,571,710	5,680,782	4,313,013	3,297,783	2,223,870	7,862,689	5,072,201	1,121,372
2004r.....	31,596,170	6,581,227	4,759,939	3,422,421	2,214,187	7,942,585	5,470,442	1,205,369
2005r.....	31,875,206	6,737,076	4,939,317	3,106,198	2,270,217	8,144,127	5,439,828	1,238,443
2006p.....	32,442,097	6,851,373	5,365,800	3,059,787	2,237,090	8,264,843	5,355,876	1,307,328
Program Payments								
2002.....	3,428,941	1,038,911	1,003,860	218,963	30,915	623,408	468,015	44,869
2003r.....	4,848,116	1,368,011	1,499,915	308,117	59,406	585,437	875,221	152,009
2004r.....	4,862,265	1,442,688	1,189,718	430,265	187,552	674,393	834,808	102,841
2005r.....	4,923,422	1,116,969	1,323,232	698,728	120,228	800,480	749,341	114,444
2006p.....	4,572,159	945,115	1,267,192	626,087	105,146	662,134	896,181	70,304
Farm Operating Expenses After Rebates								
2002.....	28,655,761	6,290,125	4,794,537	2,919,089	1,875,754	7,132,298	4,550,262	1,093,696
2003r.....	29,572,368	6,291,842	4,994,051	3,067,767	1,923,426	7,290,686	4,868,233	1,136,363
2004r.....	29,814,534	6,191,442	5,010,832	3,138,974	1,946,148	7,328,333	5,048,056	1,150,749
2005r.....	30,496,233	6,459,718	5,265,339	3,055,288	2,041,325	7,495,043	5,004,255	1,175,265
2006p.....	31,514,904	6,694,946	5,322,917	3,268,630	2,092,882	7,752,499	5,159,788	1,223,242

Source: Statistics Canada Cat. No.'s 21-010, 21-011, 21-012 and 21-013, "Agriculture Economic Statistics"; and Alberta Agriculture and Food

Table 1 (Cont'd.): Selected Farm Income Statistics, Canada and Provinces,
2002-2006

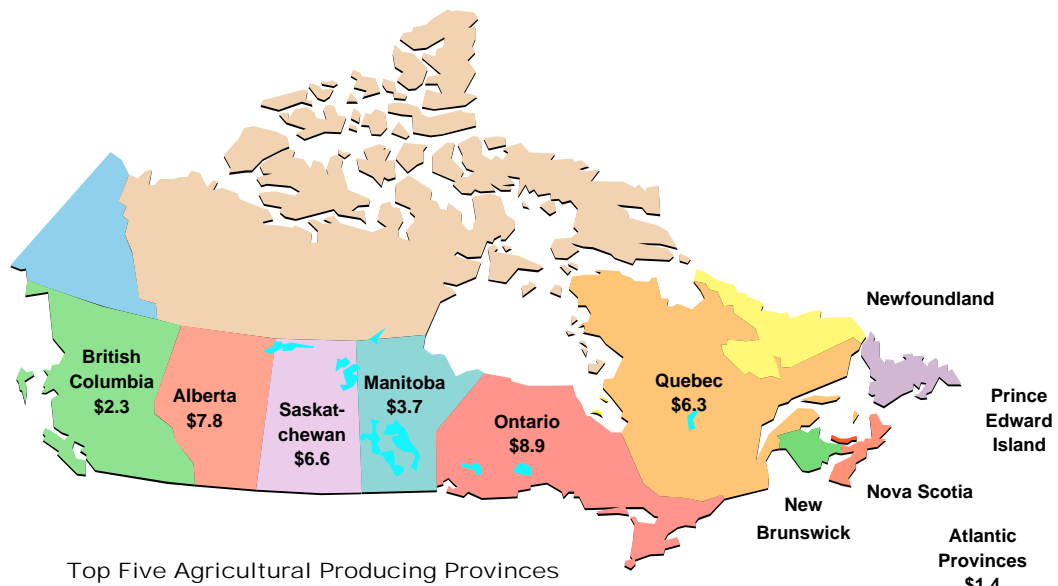
	Canada	Alberta	Sask.	Manitoba	British Columbia	Ontario	Quebec	Atlantic Provinces
\$'000								
Net Cash Income (Total Farm Cash Receipts minus Farm Operating Expenses After Rebates)								
2002.....	7,419,516	1,972,226	1,666,299	929,217	319,230	1,371,608	976,805	184,131
2003r.....	4,847,458	756,951	818,877	538,133	359,850	1,157,440	1,079,189	137,018
2004r.....	6,643,901	1,832,473	938,825	713,712	455,591	1,288,645	1,257,194	157,461
2005r.....	6,302,395	1,394,327	997,210	749,638	349,120	1,449,564	1,184,914	177,622
2006p.....	5,499,352	1,101,542	1,310,075	417,244	249,354	1,174,478	1,092,269	154,390
Realized Net Farm Income								
2002.....	3,040,699	869,921	767,632	541,314	70,046	292,915	442,501	56,370
2003r.....	422,901	-360,838	-81,546	133,429	110,460	93,356	519,081	8,959
2004r.....	2,271,124	733,848	32,120	318,284	201,983	244,513	716,032	24,344
2005r.....	1,834,214	271,453	92,009	352,484	90,722	386,464	603,481	37,601
2006p.....	1,095,697	-16,062	417,710	25,027	-16,296	132,402	537,991	14,925
Total Net Farm Income								
2002.....	1,486,430	-208,405	36,461	514,982	88,124	439,880	461,912	153,476
2003r.....	2,871,154	580,671	799,005	539,974	154,193	172,298	625,339	-326
2004r.....	4,068,395	1,278,136	922,174	260,393	177,147	566,230	843,368	20,947
2005r.....	2,478,789	561,638	749,110	124,649	47,166	394,516	578,383	23,327
2006p.....	479,206	-360,578	8,367	356,571	-61,663	47,568	433,260	55,681
Farm Debt Outstanding at December 31								
2002.....	43,667,904	9,672,876	6,009,220	4,201,079	2,278,917	10,928,231	9,020,593	1,556,988
2003r.....	46,642,490	10,341,741	6,528,396	4,721,159	2,430,903	11,419,329	9,426,295	1,774,667
2004r.....	48,737,743	10,477,714	6,690,058	5,055,355	2,672,152	12,107,598	9,851,571	1,882,973
2005r.....	50,048,750	10,418,696	6,964,656	5,368,986	2,594,213	12,524,913	10,187,316	1,989,970
2006p.....	52,348,854	10,996,273	7,024,619	5,805,355	2,967,976	13,053,422	10,534,132	1,967,077
Value of Farm Capital at July 1 (1)								
2002.....	197,109,702	54,935,622	32,715,364	15,111,348	15,844,990	51,362,226	22,158,052	4,982,100
2003r.....	198,435,678	54,802,576	32,837,145	15,230,300	16,034,095	52,219,798	22,341,791	4,969,973
2004r.....	200,913,618	55,303,604	33,078,635	15,384,940	16,463,345	53,214,486	22,475,498	4,993,110
2005r.....	206,604,853	58,108,784	33,648,802	15,745,411	17,504,392	54,082,361	22,509,558	5,005,545
2006p.....	212,157,980	60,497,645	33,909,690	15,925,597	19,159,111	55,110,632	22,503,396	5,051,909
Value per Acre of Farm Land and Buildings, Dollars (2)								
2002.....	885	770	338	531	2,115	3,135	1,958	1,400
2003.....	905	787	346	548	2,167	3,229	2,003	1,405
2004.....	927	811	350	554	2,266	3,337	2,022	1,420
2005r.....	948	842	353	565	2,378	3,417	2,044	1,427
2006p.....	975	870	355	573	2,632	3,518	2,050	1,442

(1) Valuing the on-farm inventories of livestock has proven challenging since May, 2003 when trade restrictions imposed as a result of a single case of bovine spongiform encephalopathy (BSE) created uncertainty in all livestock markets. Users should use figures for "livestock and poultry" with caution.

(2) Figures shown for Atlantic provinces are averages.

Source: Statistics Canada Cat. No.'s 21-010, 21-011, 21-012 and 21-013, "Agriculture Economic Statistics"; and Alberta Agriculture and Food

Fig. 1 Distribution of 2006 Canadian Farm Cash Receipts* (\$ Billions)



- #1 Ontario (24.1%)
- #2 Alberta (21.1%)
- #3 Saskatchewan (17.9%)
- #4 Quebec (16.9%)
- #5 Manitoba (10.0%)

* In 2006, total Canadian farm cash receipts, including direct program payments to producers, was \$37.0 billion.

2006 Farm Cash Receipts - Alberta As A Per Cent of Canada			
Selected Commodities	Alberta	Canada	Alberta as a % of Canada
	\$ Thousands		
Sugar Beets	38,180	38,180	100.0%
Cattle and Calves.....	3,018,220	6,495,015	46.5%
Canola.....	991,041	2,501,609	39.6%
Barley.....	133,028	417,163	31.9%
Forage and Grass Seed.....	21,214	72,910	29.1%
Wheat.....	810,623	2,812,738	28.8%
Hay and Clover.....	39,072	138,631	28.2%
Honey.....	34,699	136,510	25.4%
Dry Peas.....	71,950	326,925	22.0%
Potatoes.....	154,147	899,242	17.1%

Source: Statistics Canada Cat. No. 21-011, "Farm Cash Receipts - Agriculture Economic Statistics"; and Alberta Agriculture and Food

Table 2: Farm Cash Receipts by Type, Alberta and Canada, 2005 and 2006

	Alberta				Canada				Alberta as a % of Canada 2006
	2005r	2006p	% of Total	% of Total	2005r	2006p	% of Total	% of Total	
	\$'000	\$'000			% Chg.	\$'000			
Crop Market Receipts									
Grains and Oilseeds.....	1,788,093	1,944,250	8.7	24.9	6,869,961	7,561,512	10.1	20.4	25.7
Wheat.....	795,708	810,623	1.9	10.4	2,489,984	2,812,738	13.0	7.6	28.8
Oats.....	39,779	33,384	-16.1	0.4	254,931	331,970	30.2	0.9	10.1
Barley.....	142,530	133,028	-6.7	1.7	455,155	417,163	-8.3	1.1	31.9
Rye.....	1,772	2,345	32.3	0.0	13,050	16,358	25.3	0.0	14.3
Corn.....	264	550	108.3	0.0	625,675	753,497	20.4	2.0	0.1
Flaxseed.....	3,432	3,326	-3.1	0.0	170,117	154,294	-9.3	0.4	2.2
Canola.....	740,965	991,041	33.8	12.7	1,855,278	2,501,609	34.8	6.8	39.6
Soybeans.....	0	0	761,031	680,063	-10.6	1.8	0.0
Deferments.....	-120,083	-151,878	26.5	-1.9	-409,194	-516,946	26.3	-1.4	29.4
Liquidations.....	183,726	121,831	-33.7	1.6	653,934	410,766	-37.2	1.1	29.7
Special Crops.....	114,417	113,200	-1.1	1.5	827,161	854,557	3.3	2.3	13.2
Pulses.....	100,559	103,824	3.2	1.3	700,333	729,578	4.2	2.0	14.2
Lentils.....	2,288	1,543	-32.6	0.0	223,122	208,220	-6.7	0.6	0.7
Dry Beans.....	30,784	23,568	-23.4	0.3	152,999	143,188	-6.4	0.4	16.5
Dry Peas.....	63,231	71,950	13.8	0.9	306,562	326,925	6.6	0.9	22.0
Chick Peas.....	4,256	6,763	58.9	0.1	17,650	51,245	190.3	0.1	13.2
Mustard Seed.....	12,871	9,143	-29.0	0.1	65,307	48,690	-25.4	0.1	18.8
Sunflower Seed.....	514	0	-100.0	0.0	21,408	32,333	51.0	0.1	0.0
Canary Seed.....	473	233	-50.7	0.0	40,113	43,956	9.6	0.1	0.5
Sugar Beets.....	32,140	38,180	18.8	0.5	32,140	38,180	18.8	0.1	100.0
Potatoes.....	137,794	154,147	11.9	2.0	779,593	899,242	15.3	2.4	17.1
Fruits and Vegetables.....	79,278	78,789	-0.6	1.0	2,163,611	2,275,978	5.2	6.1	3.5
Vegetables.....	77,492	77,041	-0.6	1.0	1,612,235	1,683,521	4.4	4.5	4.6
Apples.....	0	0	132,922	134,132	0.9	0.4	0.0
Other Tree Fruits.....	0	0	74,134	76,742	3.5	0.2	0.0
Strawberries.....	1,051	911	-13.3	0.0	58,691	52,326	-10.8	0.1	1.7
Other Berries, Grapes.....	735	837	13.9	0.0	285,629	329,257	15.3	0.9	0.3
Floriculture and Nursery.....	127,712	146,101	14.4	1.9	1,887,211	1,950,488	3.4	5.3	7.5
Forages.....	77,067	60,286	-21.8	0.8	220,077	211,541	-3.9	0.6	28.5
Forage and Grass Seed.....	34,508	21,214	-38.5	0.3	80,089	72,910	-9.0	0.2	29.1
Hay and Clover.....	42,559	39,072	-8.2	0.5	139,988	138,631	-1.0	0.4	28.2
Other Crops.....	14,531	16,398	12.8	0.2	701,396	690,604	-1.5	1.9	2.4
Tobacco.....	0	0	194,942	178,521	-8.4	0.5	0.0
Ginseng.....	0	0	69,956	64,364	-8.0	0.2	0.0
Maple Products.....	0	0	189,312	175,275	-7.4	0.5	0.0
Forest Products.....	5,474	6,657	21.6	0.1	89,926	109,362	21.6	0.3	6.1
Christmas Trees.....	83	82	-1.2	0.0	73,499	73,254	-0.3	0.2	0.1
Miscellaneous Crops.....	8,974	9,659	7.6	0.1	83,761	89,828	7.2	0.2	10.8
Total Crops.....	2,371,069	2,551,378	7.6	32.7	13,481,153	14,482,106	7.4	39.1	17.6
Livestock and Livestock Products Market Receipts									
Cattle and Calves.....	3,002,549	3,018,220	0.5	38.7	6,359,135	6,495,015	2.1	17.5	46.5
Hogs.....	543,799	495,315	-8.9	6.4	3,941,305	3,428,012	-13.0	9.3	14.4
Sheep and Lambs.....	18,000	19,600	8.9	0.3	119,505	128,451	7.5	0.3	15.3
Total Supply Management.....	610,184	589,337	-3.4	7.6	7,315,469	7,252,444	-0.9	19.6	8.1
Dairy Products.....	398,675	382,095	-4.2	4.9	4,841,889	4,830,672	-0.2	13.1	7.9
Hens, Chickens and Turkeys...	165,924	161,821	-2.5	2.1	1,886,675	1,823,537	-3.3	4.9	8.9
Hatcheries and Eggs.....	45,585	45,421	-0.4	0.6	586,905	598,235	1.9	1.6	7.6
Wool.....	336	312	-7.1	0.0	1,176	1,156	-1.7	0.0	27.0
Honey.....	39,230	34,699	-11.5	0.4	123,188	136,510	10.8	0.4	25.4
Furs.....	1,945	2,646	36.0	0.0	85,314	96,599	13.2	0.3	2.7
Other Livestock	110,640	108,966	-1.5	1.4	335,867	327,981	-2.3	0.9	33.2
Total Livestock.....	4,366,007	4,299,995	-1.5	55.2	18,394,053	17,959,991	-2.4	48.5	23.9

Note: Interim and final payments received from the Canadian Wheat Board (wheat and barley) are included in the calendar year in which payments were received by producers.

Source: Statistics Canada Cat. No. 21-011, "Farm Cash Receipts - Agriculture Economic Statistics"; and Alberta Agriculture and Food

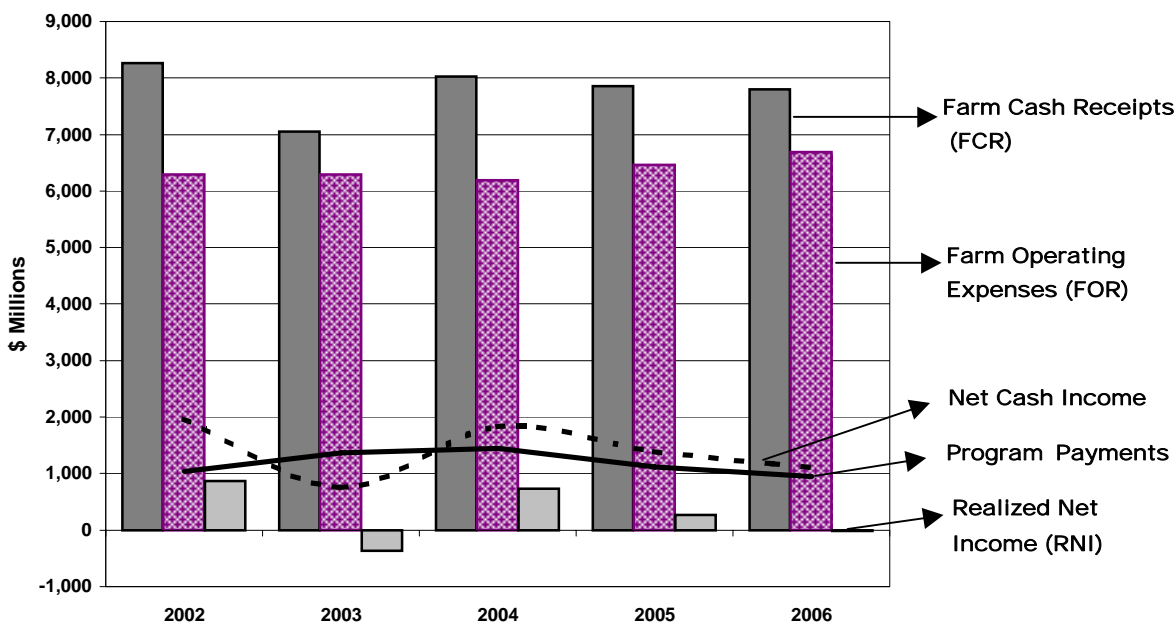
Table 2 (Cont'd.): Farm Cash Receipts by Type, Alberta and Canada, 2005 and 2006

	Alberta				Canada				Alberta as a % of Canada 2006
	2005r	2006p	% Chg.	% of Total 2006	2005r	2006p	% Chg.	% of Total 2006	
	\$'000	\$'000			\$'000	\$'000			
Program Payments									
NISA*	94,054	62,674	-33.4	0.8	442,340	316,950	-28.3	0.9	19.8
Crop Insurance	115,052	188,521	63.9	2.4	820,072	600,268	-26.8	1.6	31.4
Private Hail Insurance	33,067	33,044	-0.1	0.4	116,304	138,832	19.4	0.4	23.8
CAIS**	449,609	475,639	5.8	6.1	1,715,030	1,879,451	9.6	5.1	25.3
Prov. Stabilization Payments	0	0	390,763	542,136	38.7	1.5	0.0
Other Payments	425,187	185,237	-56.4	2.4	1,438,913	1,094,522	-23.9	3.0	16.9
Total Payments	1,116,969	945,115	-15.4	12.1	4,923,422	4,572,159	-7.1	12.4	20.7
Total Farm Cash Receipts	7,854,045	7,796,488	-0.7	100.0	36,798,628	37,014,256	0.6	100.0	21.1

* Net Income Stabilization Account ** Canadian Agricultural Income Stabilization (2006 data include CAIS Inventory Transition Initiative payments)

Source: Statistics Canada Cat. No. 21-011, "Farm Cash Receipts - Agriculture Economic Statistics"; and Alberta Agriculture and Food

Fig. 2 Alberta Farm Income Indicators, 2002-2006

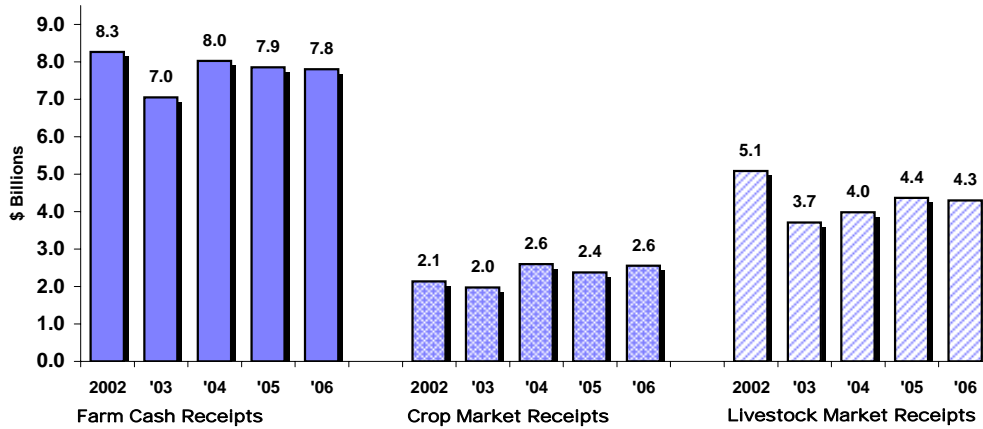


	\$ Millions				
	2002	2003	2004	2005	2006
FCR	8,262	7,049	8,024	7,854	7,796
FOR	6,290	6,292	6,191	6,460	6,695
RNI	870	-361	734	271	-16
Net Cash Income	1,972	757	1,832	1,394	1,102
Program Payments	1,039	1,368	1,443	1,117	945

Note: Farm operating expenses are after rebates and before depreciation.

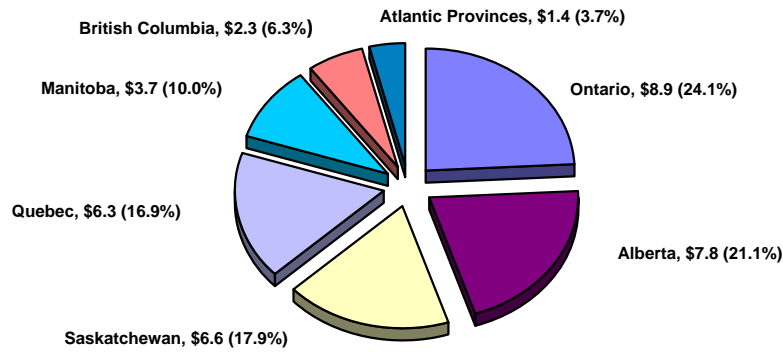
Source: Statistics Canada Cat. No. 21-011, "Farm Cash Receipts - Agriculture Economic Statistics"; and Alberta Agriculture and Food

Fig. 3 Alberta Farm Cash Receipts, Crop Market Receipts and Livestock Market Receipts, 2002-2006



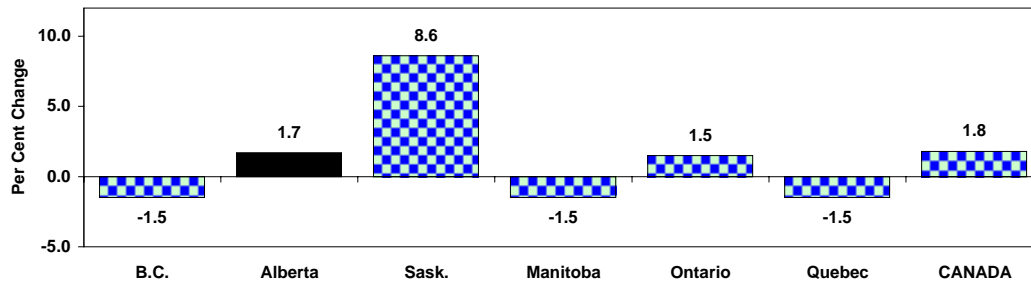
Source: Statistics Canada Cat. No. 21-011, "Farm Cash Receipts - Agriculture Economic Statistics"; and Alberta Agriculture and Food

Fig. 4 Distribution of Canada Farm Cash Receipts (\$ Billions), 2006



Source: Statistics Canada Cat. No. 21-011, "Farm Cash Receipts - Agriculture Economic Statistics"; and Alberta Agriculture and Food

Fig. 5 Per Cent Change in Farm Market Receipts (Crops and Livestock), Canada and Selected Provinces, 2006/2005



Source: Statistics Canada Cat. No. 21-011, "Farm Cash Receipts - Agriculture Economic Statistics"; and Alberta Agriculture and Food

Table 3: Alberta Farm Cash Receipts by Type, 1977-2006

	Crops			Livestock & Livestock Products			Market Receipts (Includes Crops & Livestock & Livestock Products)			Program Payments			Total Farm Cash Receipts	
	\$'000	% Chg.*	% of Total**	\$'000	% Chg.*	% of Total**	\$'000	% Chg.*	% of Total**	\$'000	% Chg.*	% of Total**	\$'000	% Chg.*
	(1)			(2)			(3) = (1+2)			(4)			(5) = (3+4)	
1977.....	888,600	0.3	45.3	1,000,348	7.8	51.0	1,888,948	4.2	96.2	73,767	-11.3	3.8	1,962,715	-0.3
1978.....	905,171	1.9	39.5	1,297,265	29.7	56.7	2,202,436	16.6	96.2	86,543	17.3	3.8	2,288,979	3.5
1979.....	1,150,301	27.1	40.5	1,586,795	22.3	55.8	2,737,096	24.3	96.3	105,865	22.3	3.7	2,842,961	16.6
1980.....	1,429,786	24.3	45.5	1,646,450	3.8	52.4	3,076,236	12.4	97.8	68,215	-35.6	2.2	3,144,451	24.2
1981.....	2,049,703	43.4	53.2	1,701,080	3.3	44.2	3,750,783	21.9	97.4	99,163	45.4	2.6	3,849,946	10.6
1982.....	1,870,078	-8.8	49.1	1,680,777	-1.2	44.1	3,550,855	-5.3	93.1	261,238	163.4	6.9	3,812,093	22.4
1983.....	1,932,142	3.3	51.5	1,678,258	-0.1	44.7	3,610,400	1.7	96.2	140,896	-46.1	3.8	3,751,296	-1.0
1984.....	1,861,683	-3.6	46.7	1,794,500	6.9	45.0	3,656,183	1.3	91.7	331,643	135.4	8.3	3,987,826	-1.6
1985.....	1,550,628	-16.7	40.4	1,811,291	0.9	47.2	3,361,919	-8.0	87.6	475,657	43.4	12.4	3,837,576	6.3
1986.....	1,333,459	-14.0	35.2	1,789,095	-1.2	47.3	3,122,554	-7.1	82.5	661,085	39.0	17.5	3,783,639	-3.8
1987.....	1,313,560	-1.5	32.5	1,919,707	7.3	47.5	3,233,267	3.5	80.1	805,522	21.8	19.9	4,038,789	-1.4
1988.....	1,637,745	24.7	36.7	2,081,308	8.4	46.6	3,719,053	15.0	83.2	748,287	-7.1	16.8	4,467,340	6.7
1989.....	1,860,196	13.6	40.4	2,179,241	4.7	47.4	4,039,437	8.6	87.8	560,032	-25.2	12.2	4,599,469	10.6
1990.....	1,641,397	-11.8	38.3	2,323,575	6.6	54.2	3,964,972	-1.8	92.6	318,119	-43.2	7.4	4,283,091	3.0
1991.....	1,537,300	-6.3	36.3	2,256,090	-2.9	53.3	3,793,390	-4.3	89.6	441,528	38.8	10.4	4,234,918	-6.9
1992.....	1,502,321	-2.3	30.3	2,563,910	13.6	51.7	4,066,231	7.2	82.0	890,028	101.6	18.0	4,956,259	-1.1
1993.....	1,562,256	4.0	30.9	2,925,608	14.1	57.8	4,487,864	10.4	88.6	576,163	-35.3	11.4	5,064,027	17.0
1994.....	2,162,536	38.4	38.7	3,036,576	3.8	54.4	5,199,112	15.8	93.2	382,209	-33.7	6.8	5,581,321	2.2
1995.....	2,625,273	21.4	44.0	3,166,414	4.3	53.0	5,791,687	11.4	97.0	177,378	-53.6	3.0	5,969,065	10.2
1996.....	2,974,815	13.3	45.6	3,401,506	7.4	52.1	6,376,321	10.1	97.7	151,886	-14.4	2.3	6,528,207	6.9
1997.....	2,641,119	-11.2	40.9	3,602,677	5.9	55.8	6,243,796	-2.1	96.6	217,729	43.4	3.4	6,461,525	9.4
1998.....	2,503,767	-5.2	38.8	3,713,494	3.1	57.6	6,217,261	-0.4	96.4	235,094	8.0	3.6	6,452,355	-1.0
1999.....	2,331,403	-6.9	35.8	3,971,292	6.9	60.9	6,302,695	1.4	96.7	218,247	-7.2	3.3	6,520,942	-0.1
2000.....	2,343,551	0.5	31.0	4,511,418	13.6	59.7	6,854,969	8.8	90.6	707,568	224.2	9.4	7,562,537	1.1
2001.....	2,290,209	-2.3	27.4	5,239,506	16.1	62.8	7,529,715	9.8	90.2	819,427	15.8	9.8	8,349,142	16.0
2002.....	2,136,646	-6.7	25.9	5,086,794	-2.9	61.6	7,223,440	-4.1	87.4	1,038,911	26.8	12.6	8,262,351	-1.0
2003r.....	1,971,402	-7.7	28.0	3,709,380	-27.1	52.6	5,680,782	-21.4	80.6	1,368,011	31.7	19.4	7,048,793	-14.7
2004r.....	2,600,331	31.9	32.4	3,980,896	7.3	49.6	6,581,227	15.9	82.0	1,442,688	5.5	18.0	8,023,915	13.8
2005r.....	2,371,069	-8.8	30.2	4,366,007	9.7	55.6	6,737,076	2.4	85.8	1,116,969	-22.6	14.2	7,854,045	-2.1
2006p.....	2,551,378	7.6	32.7	4,299,995	-1.5	55.2	6,851,373	1.7	87.9	945,115	-15.4	12.1	7,796,488	-0.7

* Per cent change from previous year

** Per cent of total farm cash receipts

Source: Statistics Canada Cat. No. 21-011, "Farm Cash Receipts - Agriculture Economic Statistics"; and Alberta Agriculture and Food

Table 4: Alberta Farm Cash Receipts From the Sale of Crops, 1977-2006

	Crop								
	Market Cash Receipts (1)	Wheat	Oats	Barley	Rye	Flaxseed	Canola	Sugar Beets	Dry Peas
\$'000									
1977.....	888,600	360,619	24,124	211,682	6,820	9,714	183,198	17,744	918
1978.....	905,171	311,383	17,457	205,634	6,957	9,123	236,563	17,180	1,000
1979.....	1,150,301	446,763	14,342	242,749	12,545	17,837	329,141	21,163	1,081
1980.....	1,429,786	656,240	27,019	311,136	30,485	29,118	305,197	44,821	1,576
1981.....	2,049,703	1,150,839	24,937	463,893	29,897	15,951	278,732	38,284	1,785
1982.....	1,870,078	957,543	24,409	460,568	19,616	14,332	246,140	18,729	3,332
1983.....	1,932,142	1,000,575	23,111	424,508	15,988	16,357	330,253	27,006	3,160
1984.....	1,861,683	1,002,511	24,998	303,101	13,951	7,040	399,484	17,820	2,665
1985.....	1,550,628	698,803	17,842	269,566	4,737	7,279	342,626	3,337	2,039
1986.....	1,333,459	517,250	16,323	318,687	4,645	5,534	267,031	9,001	2,382
1987.....	1,313,560	559,646	19,219	232,205	4,743	6,012	313,316	12,680	3,944
1988.....	1,637,745	686,440	61,636	256,552	7,720	7,217	437,847	19,380	9,595
1989.....	1,860,196	690,843	84,540	376,767	5,921	6,448	419,740	23,342	12,476
1990.....	1,641,397	713,863	35,564	272,197	5,442	8,349	336,232	26,586	10,818
1991.....	1,537,300	685,230	22,770	225,109	4,688	5,128	320,224	20,877	16,933
1992.....	1,502,321	604,720	39,803	192,114	4,628	5,912	388,758	17,277	21,986
1993.....	1,562,256	593,161	50,206	189,381	5,087	9,312	414,540	21,965	29,910
1994.....	2,162,536	840,653	45,835	265,713	6,318	9,186	773,332	26,627	50,332
1995.....	2,625,273	1,064,743	70,856	332,953	7,305	8,933	709,701	32,401	60,518
1996.....	2,974,815	1,241,345	88,387	470,725	7,330	9,094	794,467	27,008	59,406
1997.....	2,641,119	1,012,534	55,349	324,076	6,691	7,481	755,087	30,062	59,277
1998.....	2,503,767	863,418	34,220	198,273	4,182	7,832	881,378	38,402	59,516
1999.....	2,331,403	975,506	22,980	174,266	3,632	5,118	608,211	29,651	57,229
2000.....	2,343,551	959,622	20,707	220,361	2,978	5,616	556,266	32,899	53,893
2001.....	2,290,209	936,118	31,469	213,676	3,520	4,379	586,097	19,333	70,349
2002.....	2,136,646	819,953	43,697	161,637	2,717	4,897	543,321	20,072	48,053
2003r.....	1,971,402	655,157	21,428	164,107	1,519	3,953	624,433	22,732	58,140
2004r.....	2,600,331	964,574	24,938	199,324	9,748	7,707	783,910	30,921	78,434
2005r.....	2,371,069	795,708	39,779	142,530	1,772	3,432	740,965	32,140	63,231
2006p.....	2,551,378	810,623	33,384	133,028	2,345	3,326	991,041	38,180	71,950

(1) Includes market receipts only (does not include program payments).

Source: Statistics Canada Cat. No. 21-011, "Farm Cash Receipts - Agriculture Economic Statistics"; and Alberta Agriculture and Food

Table 4 (Cont'd.): Alberta Farm Cash Receipts From the Sale of Crops,
1977-2006

	Mustard Seed	Sunflower Seed	Lentils	Forage & Grass Seed	Hay & Clover	Potatoes	Total Vegetables	Floriculture & Nursery	Other Crops (2)
\$'000									
1977.....	3,468	0	0	9,845	0	14,044	8,226	13,419	24,779
1978.....	4,731	0	0	11,739	0	12,836	8,740	17,247	44,581
1979.....	2,424	0	0	13,000	0	14,970	11,072	19,762	3,452
1980.....	5,235	0	0	15,445	0	17,939	14,168	23,888	-52,481
1981.....	6,885	0	0	16,162	3,228	22,341	15,732	23,106	-42,069
1982.....	6,630	0	0	8,225	2,900	21,386	15,168	25,724	45,376
1983.....	7,246	0	0	10,322	1,257	21,792	19,556	24,777	6,234
1984.....	5,007	0	0	11,822	6,353	25,103	23,552	27,470	-9,194
1985.....	4,488	0	0	14,182	11,293	27,175	25,943	31,840	89,478
1986.....	7,650	0	1,954	30,486	12,345	39,156	29,301	32,044	39,670
1987.....	6,151	1,045	1,641	18,269	8,031	34,324	30,846	43,729	17,759
1988.....	5,649	776	1,682	23,838	12,390	41,471	35,018	54,432	-23,898
1989.....	7,431	701	800	14,400	18,709	43,135	37,294	53,639	64,010
1990.....	6,622	463	852	15,709	16,802	40,141	45,412	62,984	43,361
1991.....	6,181	603	1,259	13,497	18,473	39,103	36,254	56,139	64,832
1992.....	6,763	796	2,619	23,186	26,409	38,892	38,964	66,295	23,199
1993.....	6,180	1,089	2,270	24,959	42,505	52,960	45,300	61,511	11,920
1994.....	8,225	943	3,362	22,256	47,372	44,981	47,345	58,129	-88,073
1995.....	14,227	1,764	6,553	18,716	65,316	57,362	51,534	61,188	61,203
1996.....	16,628	1,499	4,620	30,407	60,338	61,515	52,713	54,713	-5,380
1997.....	14,897	1,065	2,022	29,860	82,867	52,140	56,816	68,349	82,546
1998.....	15,022	1,277	2,253	30,757	79,387	63,862	60,515	65,138	98,335
1999.....	12,959	1,102	3,469	40,601	81,857	74,892	53,743	75,730	110,457
2000.....	6,592	1,456	3,406	42,091	97,895	113,096	63,685	103,980	59,008
2001.....	4,451	1,633	1,875	19,303	107,399	107,146	65,397	110,255	7,809
2002.....	8,808	1,639	1,028	27,482	40,299	146,783	60,641	114,315	91,304
2003r.....	12,545	1,537	1,688	21,381	35,623	134,124	68,802	114,946	29,287
2004r.....	15,342	1,030	3,079	22,160	39,035	163,964	77,830	123,908	54,427
2005r.....	12,871	514	2,288	34,508	42,559	137,794	77,492	127,712	115,774
2006p.....	9,143	0	1,543	21,214	39,072	154,147	77,041	146,101	19,240

(2) Other crops include strawberries, other berries and grapes, corn, forest products and miscellaneous crops plus net deferments.

Source: Statistics Canada Cat. No. 21-011, "Farm Cash Receipts - Agriculture Economic Statistics"; and Alberta Agriculture and Food

Table 5: Alberta Farm Cash Receipts From the Sale of Livestock, 1977-2006

	Livestock		Supply Management						Other Livestock & Products	
	Market Cash Receipts (1)	Cattle & Calves	Hogs	Sheep & Lambs	Total Supply Mgmt.	Dairy Products	Hens, Chickens & Turkeys	Eggs & Hatcheries		Honey
	\$'000									
1977.....	1,000,348	695,977	113,493	2,960	169,403	99,390	44,083	25,930	9,469	9,046
1978.....	1,297,265	940,822	149,104	2,821	182,241	106,729	48,601	26,911	10,485	11,792
1979.....	1,586,795	1,178,929	162,123	3,225	215,706	123,108	61,227	31,371	13,027	13,785
1980.....	1,646,450	1,199,560	166,337	4,142	249,112	148,282	64,635	36,195	13,483	13,816
1981.....	1,701,080	1,180,059	189,624	3,962	295,400	173,992	78,299	43,109	15,161	16,874
1982.....	1,680,777	1,106,348	222,491	4,806	317,498	196,934	81,012	39,552	13,074	16,560
1983.....	1,678,258	1,125,035	202,241	5,231	315,693	196,769	77,662	41,262	13,742	16,316
1984.....	1,794,500	1,163,579	244,127	7,708	347,870	213,969	91,868	42,033	14,353	16,863
1985.....	1,811,291	1,181,405	248,331	6,800	345,606	215,637	88,570	41,399	11,906	17,243
1986.....	1,789,095	1,116,853	279,377	7,854	349,503	223,658	83,754	42,091	12,982	22,526
1987.....	1,919,707	1,224,926	287,590	9,247	354,171	221,104	92,143	40,924	12,502	31,271
1988.....	2,081,308	1,400,573	259,397	7,978	368,728	238,186	87,729	42,813	10,139	34,493
1989.....	2,179,241	1,474,780	265,031	8,695	386,966	246,982	96,267	43,717	9,001	34,768
1990.....	2,323,575	1,573,696	298,895	8,081	397,210	251,207	104,035	41,968	11,666	34,027
1991.....	2,256,090	1,537,410	276,091	7,386	393,359	250,093	99,609	43,657	11,666	30,178
1992.....	2,563,910	1,815,960	276,903	13,245	392,086	248,537	97,595	45,954	13,001	52,715
1993.....	2,925,608	2,109,871	322,885	14,513	395,852	244,663	103,708	47,481	13,352	69,135
1994.....	3,036,576	2,191,208	315,333	13,100	421,021	257,843	112,680	50,498	15,609	80,305
1995.....	3,166,414	2,221,065	381,812	14,394	430,846	265,643	112,404	52,799	19,689	98,608
1996.....	3,401,506	2,347,628	444,585	17,145	471,041	290,753	125,115	55,173	19,693	101,414
1997.....	3,602,677	2,535,231	438,374	15,297	484,647	316,826	129,373	38,448	22,857	106,271
1998.....	3,713,494	2,763,222	309,938	12,763	485,205	311,460	136,058	37,687	30,734	111,632
1999.....	3,971,292	2,968,181	344,341	13,385	498,662	327,063	133,836	37,763	25,832	120,891
2000.....	4,511,418	3,339,507	496,616	16,080	495,745	318,454	138,249	39,042	19,911	143,559
2001.....	5,239,506	3,913,176	572,406	14,050	547,630	348,378	156,732	42,520	24,311	167,933
2002.....	5,086,794	3,835,950	465,410	19,118	554,977	366,827	143,513	44,637	45,679	165,660
2003r....	3,709,380	2,477,430	458,571	15,799	579,715	384,704	149,290	45,721	57,452	120,413
2004r....	3,980,896	2,564,403	612,819	13,005	595,033	382,979	161,594	50,460	53,075	142,561
2005r....	4,366,007	3,002,549	543,799	18,000	610,184	398,675	165,924	45,585	39,230	152,245
2006p...	4,299,995	3,018,220	495,315	19,600	589,337	382,095	161,821	45,421	34,699	142,824

(1) Includes market receipts for livestock and livestock products (does not include program payments).

Source: Statistics Canada Cat. No. 21-011, "Farm Cash Receipts - Agriculture Economic Statistics"; and Alberta Agriculture and Food

Table 6: Alberta Farm Operating Expenses and Depreciation, 1977-2006

	Property Taxes	Cash and Share Rent	Cash Wages, Room & Board	Net Interest Payments	Interest Rebates	Net Heating Fuel	Heating Fuel Rebates	Machinery Repairs and Other
\$'000								
1977.....	34,165	78,447	89,343	164,609	0	19,103	0	158,844
1978.....	38,471	100,190	97,410	208,174	0	22,106	0	168,257
1979.....	40,756	123,530	105,486	307,325	0	24,501	0	177,825
1980.....	47,931	165,064	129,336	362,733	0	29,570	0	217,929
1981.....	56,118	169,584	164,534	545,170	12,543	28,138	280	263,454
1982.....	65,646	169,337	202,897	509,637	22,775	33,576	680	260,357
1983.....	62,915	182,615	214,723	391,873	56,121	32,237	2,328	279,585
1984.....	65,623	197,852	224,373	426,780	48,933	37,579	3,045	268,338
1985.....	66,630	183,014	255,028	439,334	38,293	41,480	3,668	290,743
1986.....	68,774	182,453	270,153	420,316	24,145	37,632	5,412	331,884
1987.....	70,149	154,113	297,263	437,030	16,260	28,753	2,743	312,081
1988.....	73,023	178,018	279,957	395,963	12,532	23,547	3,975	312,724
1989.....	77,731	193,581	299,212	389,571	10,322	26,940	2,813	349,523
1990.....	83,221	193,583	311,033	397,129	9,954	29,520	2,294	362,680
1991.....	86,581	191,491	320,431	486,373	9,378	31,561	2,600	362,209
1992.....	89,763	200,742	330,312	431,422	9,136	32,044	300	367,851
1993.....	92,579	223,028	350,243	421,382	8,907	37,215	0	388,268
1994.....	97,347	230,911	385,411	451,622	9,308	43,312	0	419,988
1995.....	101,677	245,485	397,238	484,555	7,150	40,956	0	424,188
1996.....	101,840	273,794	419,792	461,133	8,108	44,167	0	434,102
1997.....	104,985	276,068	443,858	436,580	7,370	42,956	0	428,979
1998.....	106,035	280,876	451,559	493,025	4,956	41,254	0	423,670
1999.....	104,975	289,707	477,408	529,415	4,010	49,524	0	443,786
2000.....	106,025	293,230	488,071	566,677	6,109	58,734	2,700	456,002
2001.....	102,844	303,969	512,475	561,230	5,588	62,564	13,000	469,682
2002.....	100,273	323,168	532,974	506,195	5,914	54,963	199	483,773
2003r.....	102,680	346,717	527,644	503,719	5,802	73,991	2,133	483,289
2004r.....	105,555	350,037	523,423	482,551	5,479	72,802	3,702	490,538
2005r.....	107,138	352,759	546,977	475,466	5,076	81,416	3,504	505,254
2006p.....	110,995	374,577	568,856	555,823	4,837	72,333	6,218	520,412

Source: Statistics Canada Cat. No. 21-012, "Farm Operating Expenses and Depreciation Charges - Agriculture Economic Statistics"; and Alberta Agriculture and Food

Table 6 (Cont'd.): Alberta Farm Operating Expenses and Depreciation,
1977-2006

	Net Machinery Fuel	Machinery Fuel Rebates	Net Fertilizer & Lime Purchases	Fertilizer & Lime Rebates	(1) Other Net Crop Expenses	Net Commercial Feed Purchases	Commercial Feed Rebates	Livestock & Poultry Purchases
\$'000								
1977.....	118,522	8,039	114,696	0	84,015	159,319	0	77,480
1978.....	126,876	8,416	142,352	0	106,392	146,208	0	111,959
1979.....	151,236	6,993	179,205	0	128,261	187,214	0	163,982
1980.....	182,760	5,439	202,906	0	147,582	224,392	0	155,696
1981.....	259,996	4,631	280,275	0	185,805	274,901	0	136,933
1982.....	276,086	5,191	288,387	0	209,135	271,746	0	133,906
1983.....	294,856	4,423	315,028	0	251,396	244,177	0	127,903
1984.....	299,678	4,145	336,070	0	278,945	326,086	0	158,047
1985.....	303,448	9,330	319,018	16,525	292,574	317,329	13,238	138,470
1986.....	214,135	16,166	291,948	19,200	314,327	254,424	74,800	177,158
1987.....	190,802	7,836	258,167	16,420	285,913	201,336	71,530	309,086
1988.....	197,379	7,130	266,985	16,146	300,280	286,467	47,262	306,019
1989.....	210,055	4,758	290,624	18,143	349,000	351,437	47,614	343,527
1990.....	275,213	3,822	274,108	19,666	314,566	304,741	38,752	311,343
1991.....	260,285	3,037	262,887	20,575	310,371	284,925	33,358	310,081
1992.....	244,926	283	302,421	6,229	299,709	303,025	43,658	360,716
1993.....	272,427	0	331,613	0	339,555	343,668	43,254	505,337
1994.....	307,670	0	404,855	0	399,072	448,265	35,452	485,562
1995.....	323,419	0	466,420	0	446,862	614,783	8,750	421,404
1996.....	345,783	0	511,742	0	496,058	723,615	0	359,280
1997.....	352,695	0	474,698	0	538,719	820,146	0	534,645
1998.....	309,773	0	482,946	0	555,077	831,461	0	647,772
1999.....	315,717	0	476,887	0	572,637	778,338	0	961,325
2000.....	384,869	0	513,237	0	561,840	858,881	0	1,089,151
2001.....	381,020	0	556,862	0	577,733	996,302	0	1,048,238
2002.....	335,298	0	546,838	0	605,283	1,271,281	0	631,595
2003r.....	358,769	0	590,585	0	693,616	1,080,589	0	629,388
2004r.....	387,470	0	602,397	0	688,103	918,501	0	659,051
2005r.....	484,338	0	619,264	0	719,653	848,694	0	788,830
2006p.....	510,008	0	634,126	0	725,855	905,557	0	742,303

(1) Other Net Crop Expenses include pesticides, commercial seed, irrigation, crop and hail insurance premiums and twine/wire/containers.

Source: Statistics Canada Cat. No. 21-012, "Farm Operating Expenses and Depreciation Charges - Agriculture Economic Statistics";
and Alberta Agriculture and Food

Table 6 (Cont'd.): Alberta Farm Operating Expenses and Depreciation,
1977-2006

	Repairs to Buildings & Fences	Electricity & Telephone	(2) Misc.	Operating Expenses After Rebates	Depreciation on Buildings	Depreciation on Machinery	Total Depreciation	Total Expenses After Rebates Including Depreciation
\$'000								
1977.....	47,494	38,736	96,204	1,280,977	58,090	303,340	361,430	1,642,407
1978.....	48,874	42,323	103,011	1,462,603	67,739	348,741	416,480	1,879,083
1979.....	54,368	44,324	128,657	1,816,670	94,329	412,701	507,030	2,323,700
1980.....	58,424	50,540	148,501	2,123,364	118,099	481,612	599,711	2,723,075
1981.....	71,736	54,648	193,911	2,685,203	128,101	543,574	671,675	3,356,878
1982.....	71,484	58,835	203,860	2,754,889	128,789	592,323	721,112	3,476,001
1983.....	64,274	62,897	209,724	2,734,203	121,051	604,749	725,800	3,460,003
1984.....	64,730	71,555	243,806	2,999,462	111,688	597,768	709,456	3,708,918
1985.....	62,325	81,633	237,258	3,028,284	104,671	600,851	705,522	3,733,806
1986.....	77,225	83,544	257,287	2,981,260	95,252	611,157	706,409	3,687,669
1987.....	98,813	83,064	273,587	3,000,157	92,528	593,927	686,455	3,686,612
1988.....	97,155	86,472	303,969	3,107,958	91,662	594,835	686,497	3,794,455
1989.....	93,286	92,178	354,593	3,421,258	102,907	613,341	716,248	4,137,506
1990.....	101,047	97,161	351,845	3,407,190	110,192	635,196	745,388	4,152,578
1991.....	102,381	103,834	427,886	3,541,296	107,711	618,859	726,570	4,267,866
1992.....	105,285	110,314	467,057	3,645,587	103,490	614,152	717,642	4,363,229
1993.....	115,976	119,670	472,230	4,013,191	103,495	631,920	735,415	4,748,606
1994.....	127,565	128,366	414,159	4,344,105	113,442	672,385	785,827	5,129,932
1995.....	124,698	140,568	416,677	4,648,930	130,539	719,751	850,290	5,499,220
1996.....	136,269	148,520	419,449	4,875,544	143,410	780,346	923,756	5,799,300
1997.....	137,813	153,901	385,953	5,131,996	160,851	828,080	988,931	6,120,927
1998.....	134,486	146,933	379,717	5,284,584	171,707	864,827	1,036,534	6,321,118
1999.....	136,874	151,036	434,472	5,722,101	178,992	894,579	1,073,571	6,795,672
2000.....	143,403	161,120	475,773	6,157,013	188,070	897,347	1,085,417	7,242,430
2001.....	147,705	176,872	543,033	6,440,529	197,779	922,739	1,120,518	7,561,047
2002.....	141,797	206,182	550,505	6,290,125	204,559	912,759	1,117,318	7,407,443
2003r.....	144,633	215,537	540,685	6,291,842	209,700	921,805	1,131,505	7,423,347
2004r.....	147,526	205,897	557,591	6,191,442	216,737	898,018	1,114,755	7,306,197
2005r.....	153,427	206,446	570,056	6,459,718	225,689	921,252	1,146,941	7,606,659
2006p.....	156,495	228,921	588,685	6,694,946	233,883	920,323	1,154,206	7,849,152

(2) Miscellaneous expenses include business insurance, custom work, stabilization premiums, artificial insemination and veterinary fees, legal and accounting fees and other expenses.

Source: Statistics Canada Cat. No. 21-012, "Farm Operating Expenses and Depreciation Charges - Agriculture Economic Statistics";
and Alberta Agriculture and Food

Table 7: Alberta Net Income From Farming Operations, 1977-2006

	<u>1</u>	<u>2</u>	<u>3</u>	<u>4</u>	<u>5</u>	<u>6</u>	<u>7</u>	<u>8</u>
	Total Farm Cash Receipts	Operating Expenses After Rebates	(1-2) Net Cash Income	Income- In-Kind	Depreciation Charges	(3+4-5) Realized Net Income	Value of Inventory Change	Total Net Farm Income (6+7)
	\$'000							
1977.....	1,962,715	1,280,977	681,738	20,348	361,430	340,656	-75,028	265,628
1978.....	2,288,979	1,462,603	826,376	24,091	416,480	433,987	101,002	534,989
1979.....	2,842,961	1,816,670	1,026,291	27,762	507,030	547,023	63,486	610,509
1980.....	3,144,451	2,123,364	1,021,087	29,850	599,711	451,226	153,938	605,164
1981.....	3,849,946	2,685,203	1,164,743	23,404	671,675	516,472	113,451	629,923
1982.....	3,812,093	2,754,889	1,057,204	21,124	721,112	357,216	-54,749	302,467
1983.....	3,751,296	2,734,203	1,017,093	20,090	725,800	311,383	-190,906	120,477
1984.....	3,987,826	2,999,462	988,364	19,823	709,456	298,731	-329,240	-30,509
1985.....	3,837,576	3,028,284	809,292	18,896	705,522	122,666	-20,292	102,374
1986.....	3,783,639	2,981,260	802,379	15,901	706,409	111,871	471,085	582,956
1987.....	4,038,789	3,000,157	1,038,632	13,685	686,455	365,862	23,555	389,417
1988.....	4,467,340	3,107,958	1,359,382	13,229	686,497	686,114	85,899	772,013
1989.....	4,599,469	3,421,258	1,178,211	13,130	716,248	475,093	99,799	574,892
1990.....	4,283,091	3,407,190	875,901	13,139	745,388	143,652	202,391	346,043
1991.....	4,234,918	3,541,296	693,622	12,326	726,570	-20,622	164,210	143,588
1992.....	4,956,259	3,645,587	1,310,672	12,830	717,642	605,860	-160,060	445,800
1993.....	5,064,027	4,013,191	1,050,836	14,955	735,415	330,376	601,179	931,555
1994.....	5,581,321	4,344,105	1,237,216	15,549	785,827	466,938	103,018	569,956
1995.....	5,969,065	4,648,930	1,320,135	15,153	850,290	484,998	396,563	881,561
1996.....	6,528,207	4,875,544	1,652,663	16,518	923,756	745,425	13,800	759,225
1997.....	6,461,525	5,131,996	1,329,529	16,713	988,931	357,311	-60,043	297,268
1998.....	6,452,355	5,284,584	1,167,771	14,813	1,036,534	146,050	160,442	306,492
1999.....	6,520,942	5,722,101	798,841	14,909	1,073,571	-259,821	497,632	237,811
2000.....	7,562,537	6,157,013	1,405,524	16,267	1,085,417	336,374	38,697	375,071
2001.....	8,349,142	6,440,529	1,908,613	15,353	1,120,518	803,448	-260,616	542,832
2002.....	8,262,351	6,290,125	1,972,226	15,013	1,117,318	869,921	-1,078,326	-208,405
2003r.....	7,048,793	6,291,842	756,951	13,716	1,131,505	-360,838	941,509	580,671
2004r.....	8,023,915	6,191,442	1,832,473	16,130	1,114,755	733,848	844,288	1,278,136
2005r.....	7,854,045	6,459,718	1,394,327	24,067	1,146,941	271,453	290,185	561,638
2006p.....	7,796,488	6,694,946	1,101,542	36,602	1,154,206	-16,062	-344,516	-360,578

Source: Statistics Canada Cat. No. 21-010, "Net Farm Income - Agriculture Economic Statistics"; and Alberta Agriculture and Food

Table 8: Current Value of Alberta Farm Capital and Value Per Acre of Farm Land and Buildings, 1977-2006

	Livestock and Poultry (1)	Land and Buildings	Machinery and Equipment	Total Farm Capital	Value of Farm Land & Buildings
	\$'000				\$/Acre
1977.....	1,099,894	12,523,091	2,430,618	16,053,603	251
1978.....	1,710,604	14,942,972	2,791,088	19,444,664	299
1979.....	2,478,357	21,172,490	3,297,240	26,948,087	424
1980.....	2,551,751	27,137,589	3,842,797	33,532,137	544
1981.....	2,531,870	29,961,159	4,362,215	36,855,244	600
1982.....	2,558,146	29,682,516	4,846,335	37,086,997	592
1983.....	2,560,398	27,368,393	5,046,965	34,975,756	543
1984.....	2,589,885	24,966,230	5,079,298	32,635,413	493
1985.....	2,333,295	23,019,800	5,208,597	30,561,692	453
1986.....	2,375,837	20,773,520	5,382,284	28,531,641	407
1987.....	2,796,853	19,744,120	5,409,712	27,950,685	386
1988.....	3,048,758	19,159,142	5,523,052	27,730,952	374
1989.....	3,236,197	21,091,994	5,790,087	30,118,278	411
1990.....	3,351,948	22,169,169	6,124,730	31,645,847	432
1991.....	3,499,557	21,291,475	6,079,438	30,870,470	414
1992.....	3,394,565	20,798,399	5,982,777	30,175,741	405
1993.....	4,087,167	21,147,301	6,209,895	31,444,363	413
1994.....	4,637,627	23,017,810	6,640,116	34,295,553	450
1995.....	4,191,096	26,302,921	7,109,304	37,603,321	515
1996.....	3,792,358	28,696,985	7,458,676	39,948,019	553
1997.....	4,527,436	31,034,011	7,767,975	43,329,422	597
1998.....	4,663,713	33,281,392	8,258,258	46,203,363	640
1999.....	5,020,493	34,854,125	8,545,928	48,420,546	670
2000.....	5,900,892	36,792,273	8,588,902	51,282,067	707
2001.....	6,871,647	38,872,514	8,684,163	54,428,324	747
2002.....	5,945,993	40,205,252	8,784,377	54,935,622	770
2003.....	4,753,959	41,215,449	8,833,169	54,802,577	787
2004.....	3,848,763	42,598,622	8,856,219	55,303,604	811
2005r.....	4,776,466	44,358,041	8,974,277	58,108,784	842
2006p.....	5,469,705	45,968,603	9,059,337	60,497,645	870

(1) Valuing the on-farm inventories of livestock has proven challenging since May, 2003 when trade restrictions imposed as a result of a single case of bovine spongiform encephalopathy (BSE) created uncertainty in all livestock markets. Users are advised to use figures for "livestock and poultry" with caution.

Source: Statistics Canada Cat. No. 21-013, "Value of Farm Capital - Agriculture Economic Statistics"; and Alberta Agriculture and Food

Table 9: Alberta Farm Debt Outstanding by Lender at December 31, 1977-2006

		(1) Federal Gov't Agencies	(2) Provincial Gov't Agencies	Credit Unions	Other (3)	Advance Payment Programs	Total Debt at Year End
	\$'000						
1977.....	971,000	531,145	299,875	135,177	296,271	15,988	2,249,456
1978.....	1,215,000	560,590	337,314	155,348	334,821	16,050	2,619,123
1979.....	1,490,000	603,692	406,967	204,830	355,300	6,633	3,067,422
1980.....	1,597,000	631,488	592,841	239,031	368,420	13,352	3,442,132
1981.....	1,728,000	676,816	863,637	247,693	547,281	41,712	4,105,139
1982.....	1,831,000	714,317	1,126,451	278,568	604,132	49,663	4,604,131
1983.....	1,982,000	850,768	1,280,262	196,894	691,725	39,253	5,040,902
1984.....	2,009,000	854,663	1,443,244	200,747	647,828	19,556	5,175,038
1985.....	2,085,000	835,701	1,568,392	200,747	616,483	46,964	5,353,287
1986.....	2,281,000	754,509	1,692,152	187,000	540,237	92,748	5,547,646
1987.....	2,353,990	663,140	1,698,125	181,000	513,730	81,298	5,491,283
1988.....	2,385,487	568,601	1,735,406	146,000	547,821	85,954	5,469,269
1989.....	2,611,875	487,126	1,899,786	176,000	547,821	21,397	5,744,005
1990.....	2,669,062	428,274	1,930,615	216,750	615,308	318,985	6,178,994
1991.....	2,868,250	409,507	1,994,467	222,000	615,308	291,912	6,401,444
1992.....	2,787,663	386,705	1,971,709	228,500	594,548	257,810	6,226,935
1993.....	2,957,253	370,798	1,974,000	236,000	576,623	244,935	6,359,609
1994.....	3,078,729	384,142	1,963,940	249,750	578,059	144,294	6,398,914
1995.....	3,177,512	449,450	1,950,592	278,750	630,834	145,580	6,632,718
1996.....	3,247,877	550,539	1,810,124	311,500	798,809	175,356	6,894,205
1997.....	3,744,959	702,042	1,741,163	344,250	965,123	113,846	7,611,383
1998.....	4,182,915	806,589	1,753,953	389,500	969,355	116,561	8,218,873
1999.....	4,450,066	926,073	1,793,995	411,257	985,014	118,617	8,685,022
2000.....	4,542,756	987,831	1,976,111	458,031	1,031,111	132,329	9,128,169
2001.....	4,542,881	1,131,911	2,114,858	508,550	1,077,207	109,799	9,485,206
2002.....	4,532,078	1,182,368	2,171,862	554,094	1,181,570	50,904	9,672,876
2003.....	4,774,732	1,366,847	2,333,345	604,241	1,155,822	106,754	10,341,741
2004.....	4,626,023	1,610,617	2,247,985	650,994	1,256,157	85,938	10,477,714
2005r.....	4,487,372	1,895,609	2,253,519	673,517	999,023	109,656	10,418,696
2006p.....	4,442,352	2,168,670	2,492,312	713,469	1,040,645	138,825	10,996,273

(1) Includes loans made through the Farm Credit Corporation, Federal Development Business Bank and under the Veterans Land Act.

(2) Includes loans made through Alberta Treasury Branches and the Alberta Agriculture Financial Services Corporation.

(3) Includes insurance, trust companies, supply companies, private individuals and others.

Source: Statistics Canada Cat. No. 21-014, "Farm Debt Outstanding - Agriculture Economic Statistics"; and Alberta Agriculture and Food