

2012 - *Year in Review*

**Where is the Other Half my
Canola Yield?**

Plethora of Pathological Issues

**Strong Start, Weak (*but
respectable*) Finish**

Norm Flore P. Ag., CCA
Manager, Agronomic Services
Jan 15, 2013
Agronomy Update; Lethbridge, AB



The Gales of Sept . . . Aftermath . . .



Notable Occurrences

- Disappointing Canola yields
- Plethora of Pathological Issues
- Aster Yellows
- Wading through new products
- Herbicide non-performance or resistance?
- Crop lodging
- VRT

Alberta Agriculture

AgroClimatic Information Services (ACIS)

Alberta Agriculture and Rural Development

Alberta.ca > Agriculture and Rural Development > AgroClimatic Information Service > Current and Historical Alberta Weather Station Data Viewer

About the Ministry Find Staff Information Decision Making Tools Directories General Store Programs & Services Maps

Current and Historical Alberta Weather Station Data Viewer

Brought to you by the AgroClimatic Information Service (ACIS)

— Show Directions —

— Legend —

- ☒ Available for all selected stations
- ☐ Not available for some selected stations
- ☐ Not available for any selected stations
- Station with all requested elements available
- Selected station with all requested elements available
- ✖ Selected station with one or more requested elements not available
- Station with one or more requested elements not available

Popular All Elements Derivatives Normals

Select Station (s):

Clear Selection Clear All Tabs Definitions

	Observed	Normal
Precipitation (mm)	<input type="checkbox"/>	
Accumulated Precipitation (mm)	<input type="checkbox"/>	<input type="checkbox"/>
Temperature (°C)	<input type="checkbox"/>	<input type="checkbox"/>
Minimum Temperature (°C)	<input type="checkbox"/>	<input type="checkbox"/>
Maximum Temperature (°C)	<input type="checkbox"/>	<input type="checkbox"/>
Relative Humidity at 2m (%)	<input type="checkbox"/>	
Wind Speed at 2m (km/h)	<input type="checkbox"/>	
Wind Direction at 2m (deg)	<input type="checkbox"/>	
Wind Speed at 10m (km/h)	<input type="checkbox"/>	
Wind Direction at 10m (deg)	<input type="checkbox"/>	
Corn Heat Units	<input type="checkbox"/>	<input type="checkbox"/>
Potato Heat Units	<input type="checkbox"/>	<input type="checkbox"/>
Growing Degree Days (5°C)	<input type="checkbox"/>	<input type="checkbox"/>
Reference Evapotranspiration (mm)	<input type="checkbox"/>	
Frost Probability 9°C (%)	<input type="checkbox"/>	

Please select station and element

Period: Precip Unit:

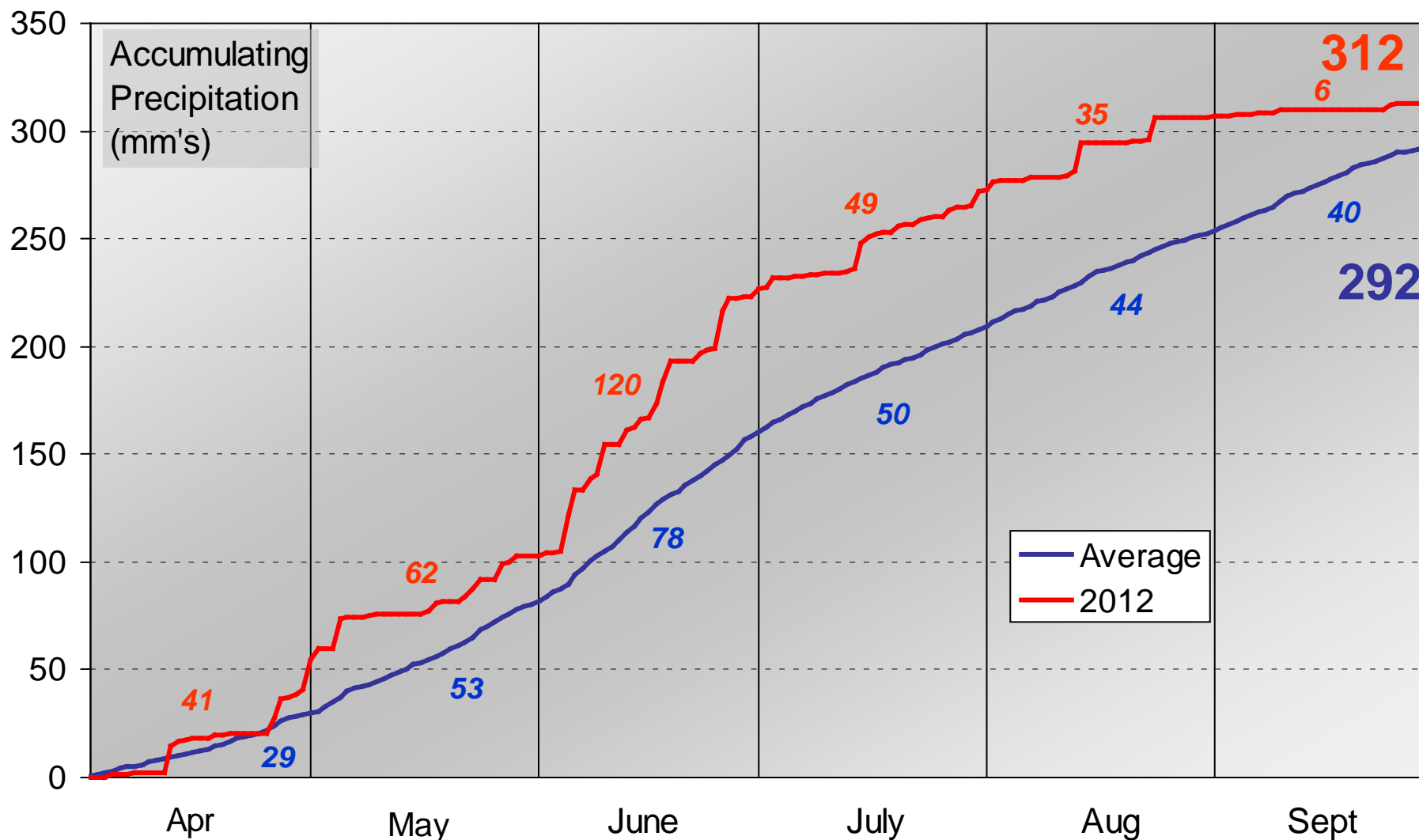
Geographic Region

Map

Map data ©2013 Google - Terms of Use

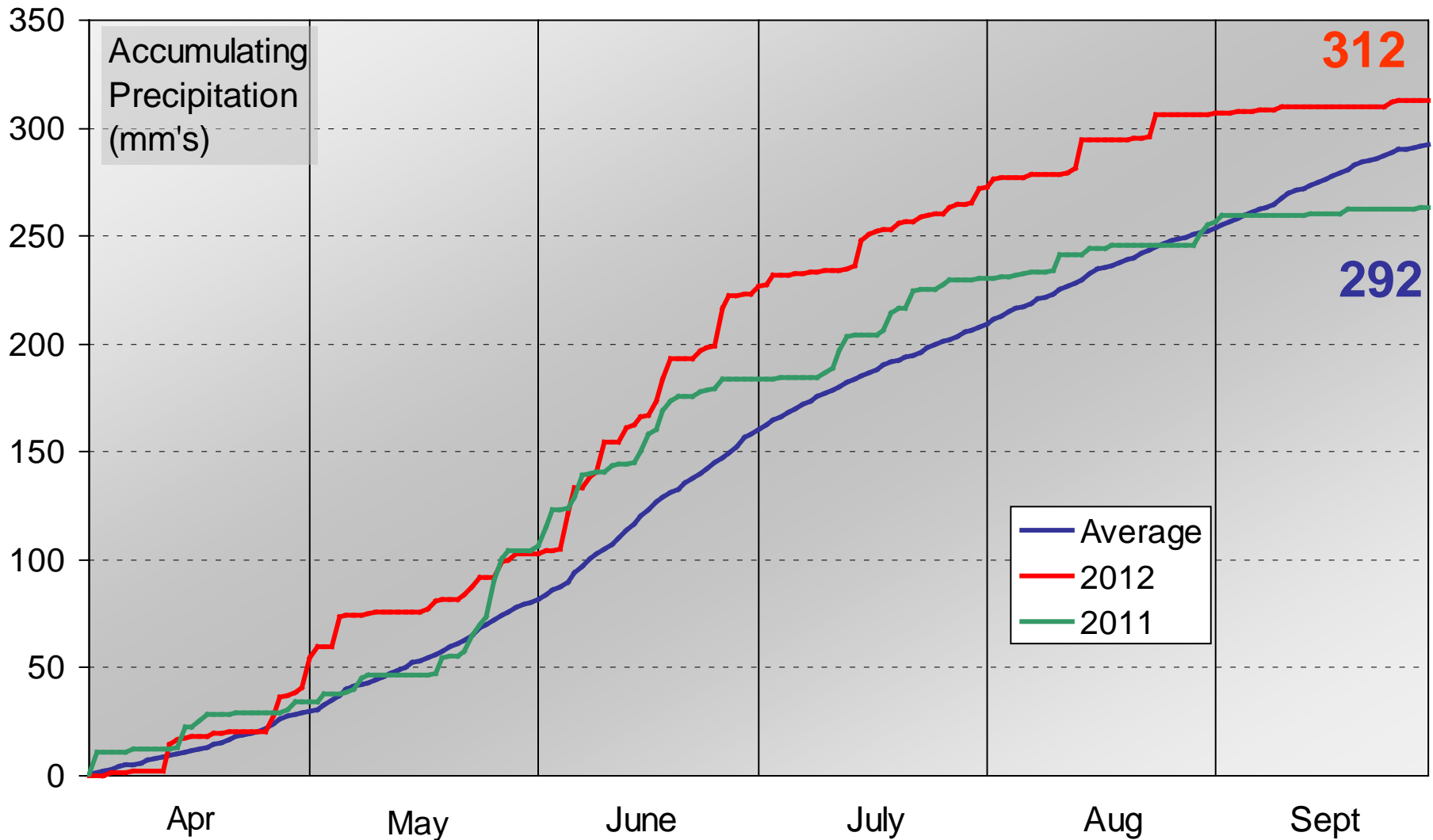
2012 vs Average Accumulated Precip

10 S. Alberta Met Stations

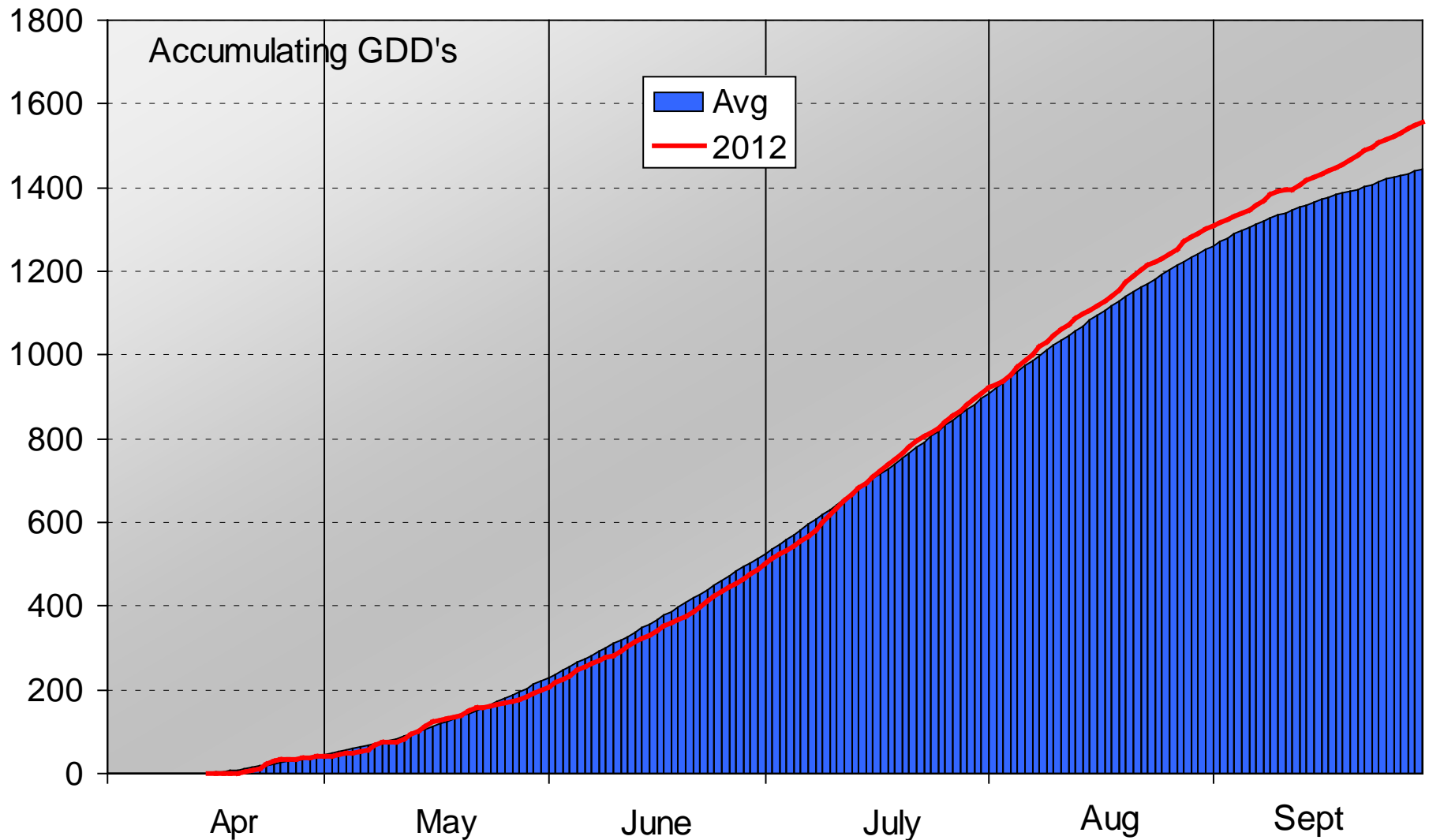


2012 vs Average Accumulated Precip

10 S. Alberta Met Stations

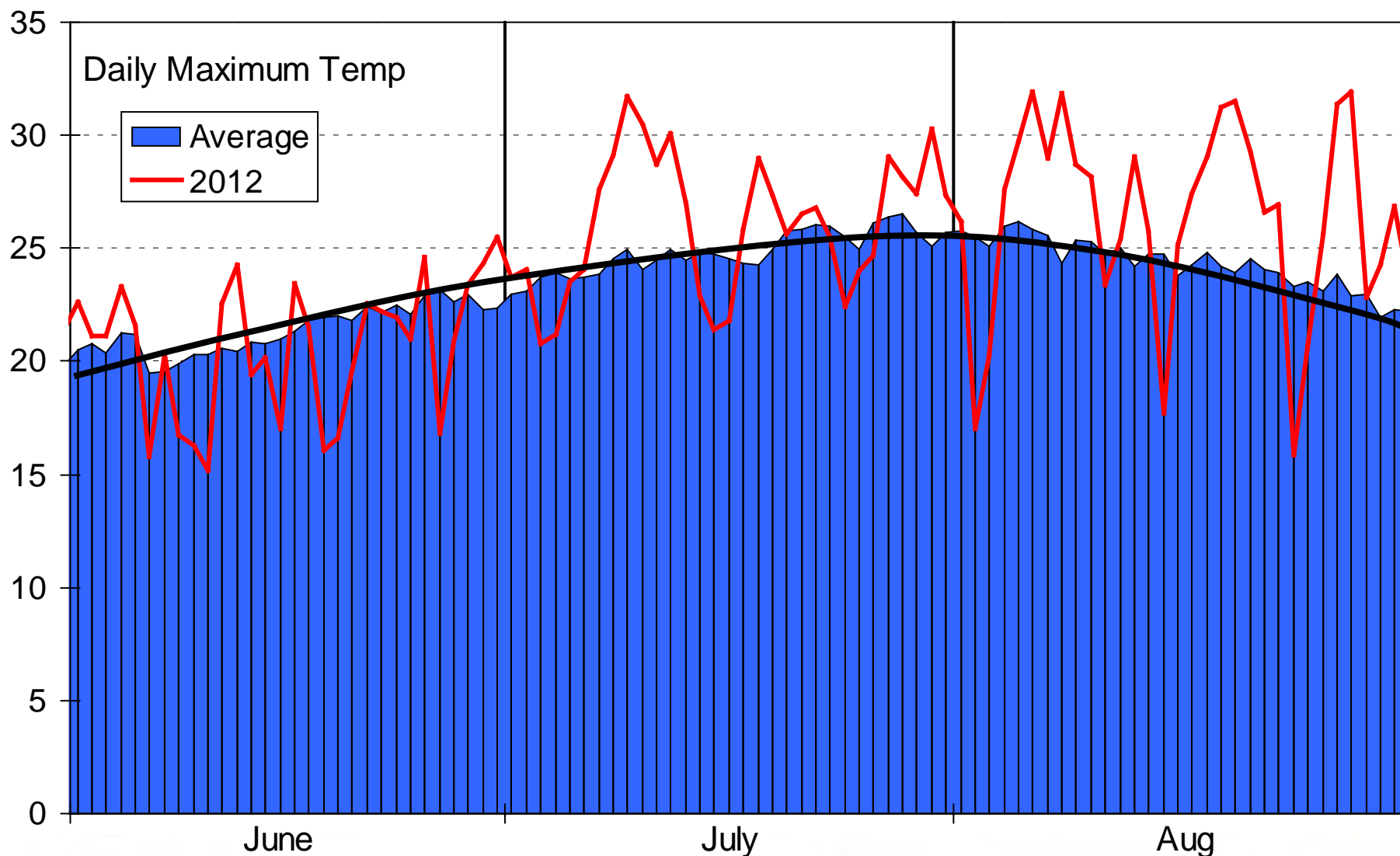


2012 vs Average Accumulated GDD's



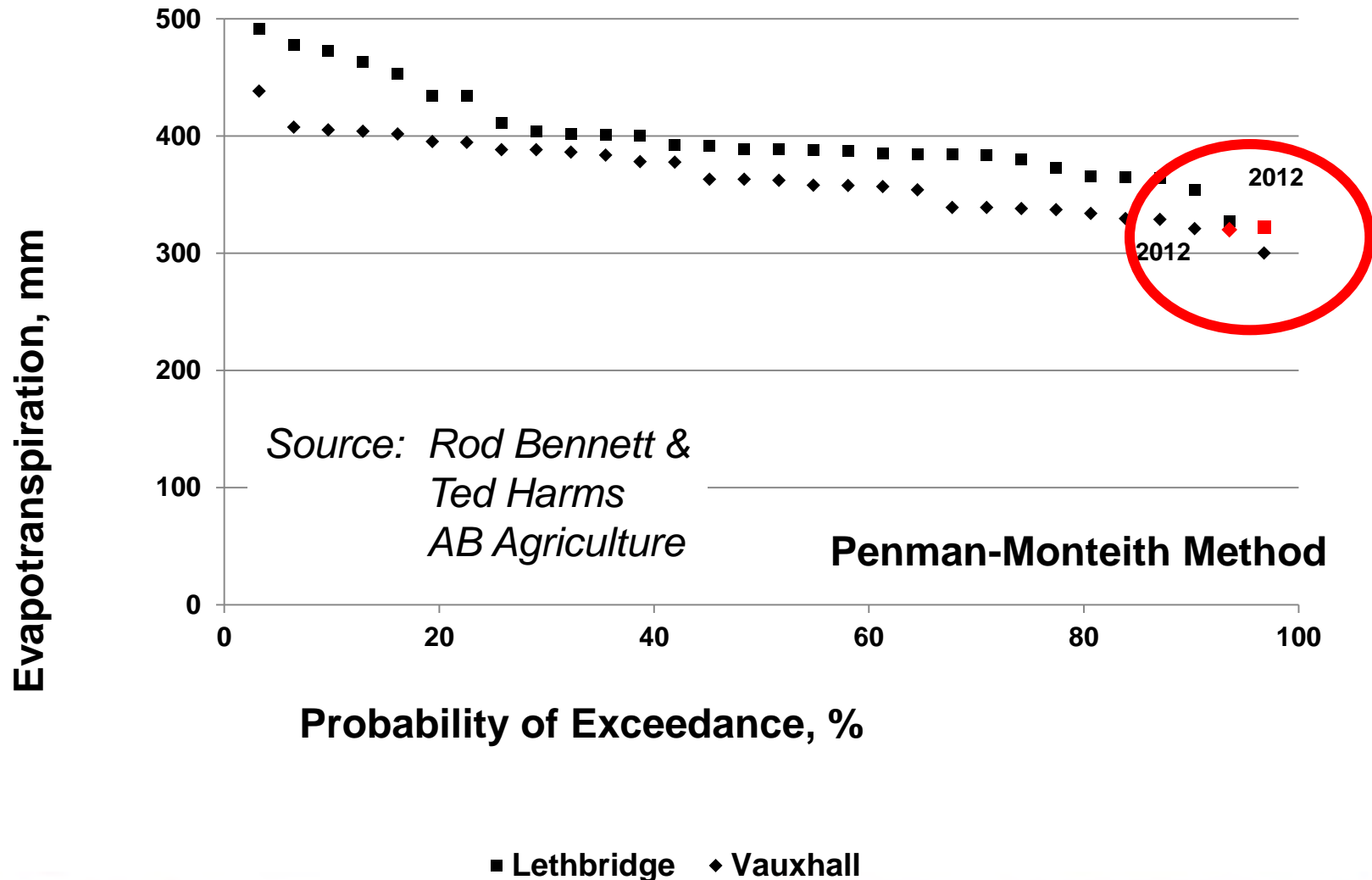
Daily Maximum Temp - 2012 vs Long Term

10 S. Alberta Met Stations

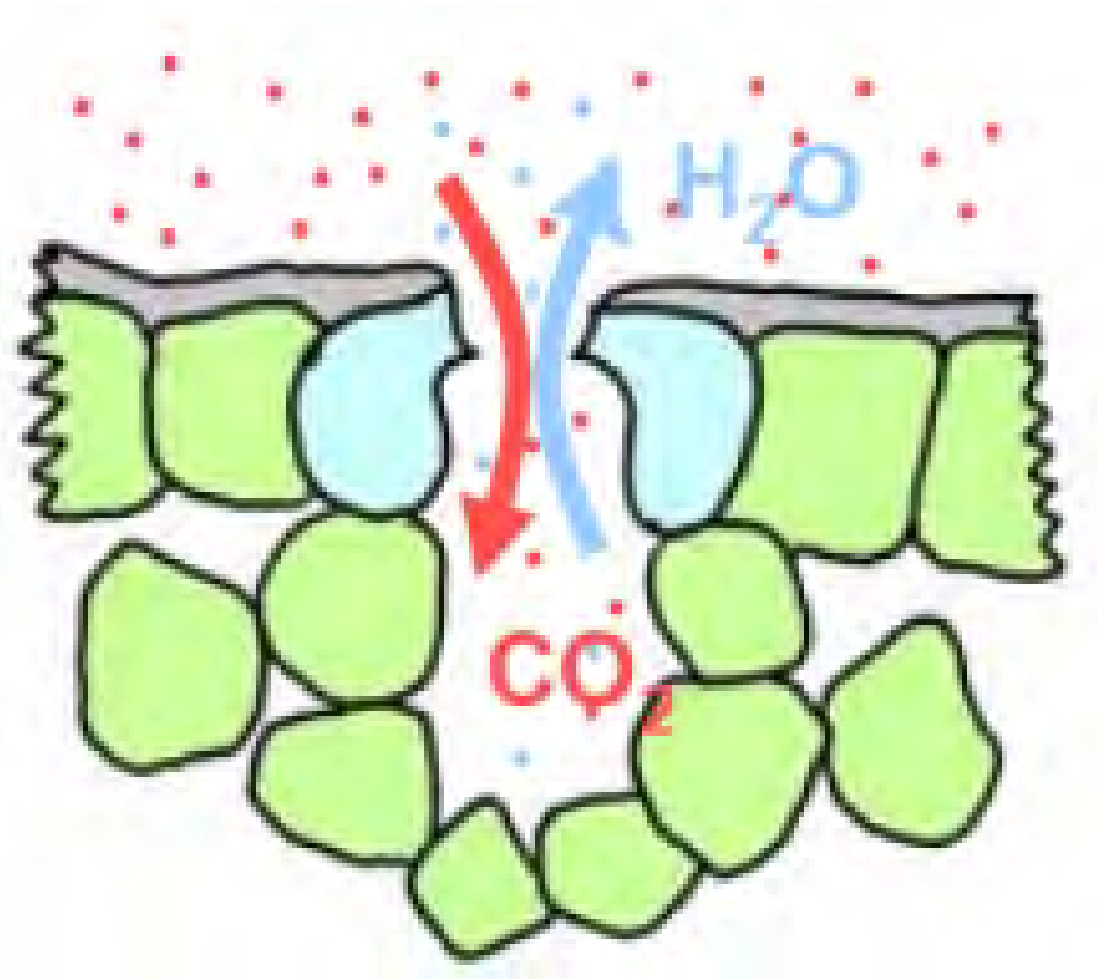


Modeling Evapotranspiration in 2012

Canola



Photosynthesis - Transpiration Compromise



What is Causing the Abnormal Growth?





What is causing the premature death?







Did Cereal Fungicides Work in 2012?

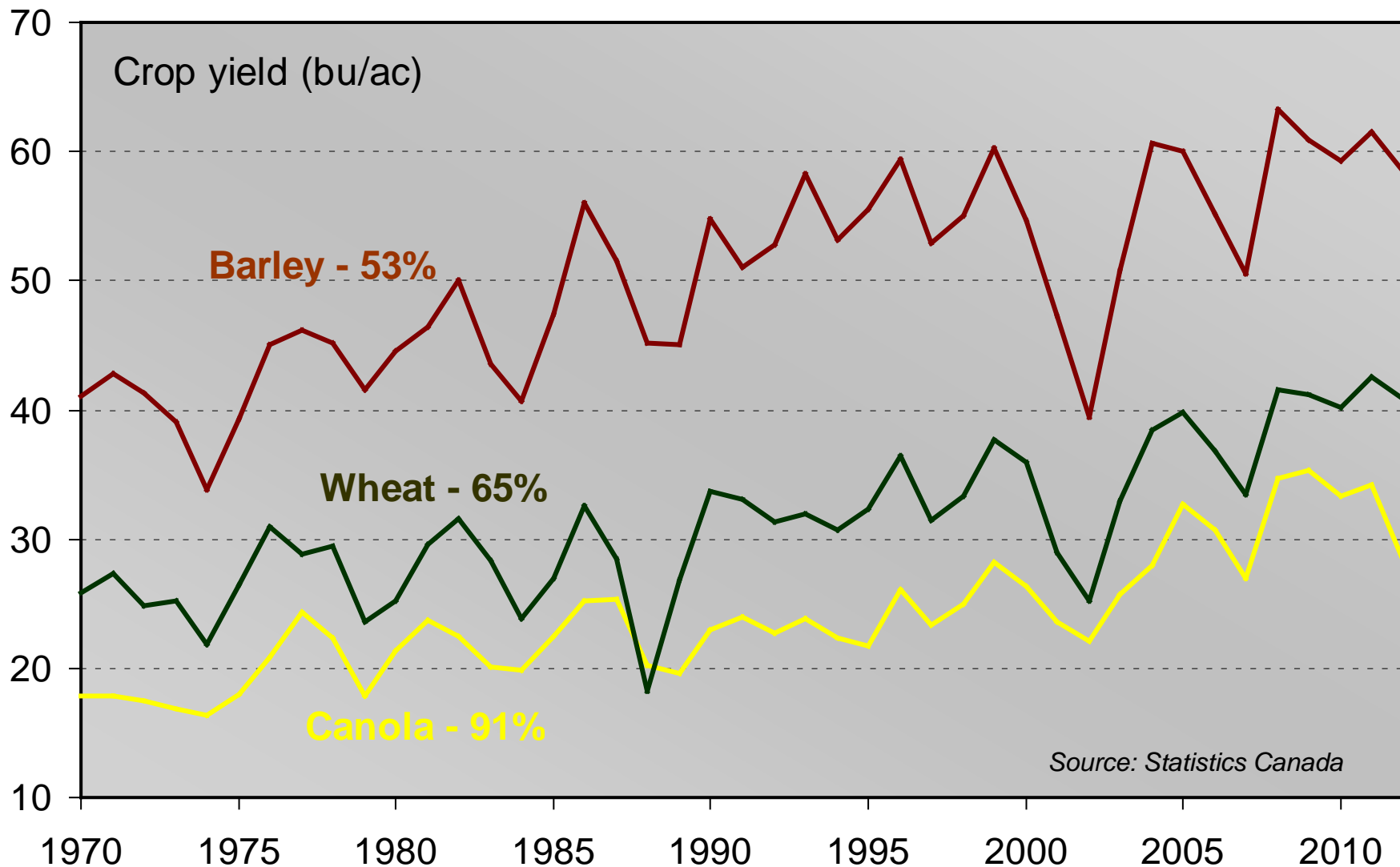




Insect Issues



W. Canadian Crop Yield Trends





PRECEDE™

AGROTAIN®
INTERNATIONAL, LLC.

Stabilized Nitrogen™

**Maximum
N-Pact®**



EMERGE

0-21-3

AWAKEN ST
6-0-1 with micronutrients / 6-0-1 avec oligo-éléments



Coptrac™



YIELDMAX™



GRASSHOPPER
ADVANCED LIQUID NUTRITION



PROTINUS™



**MicroEssentials®
S15™**

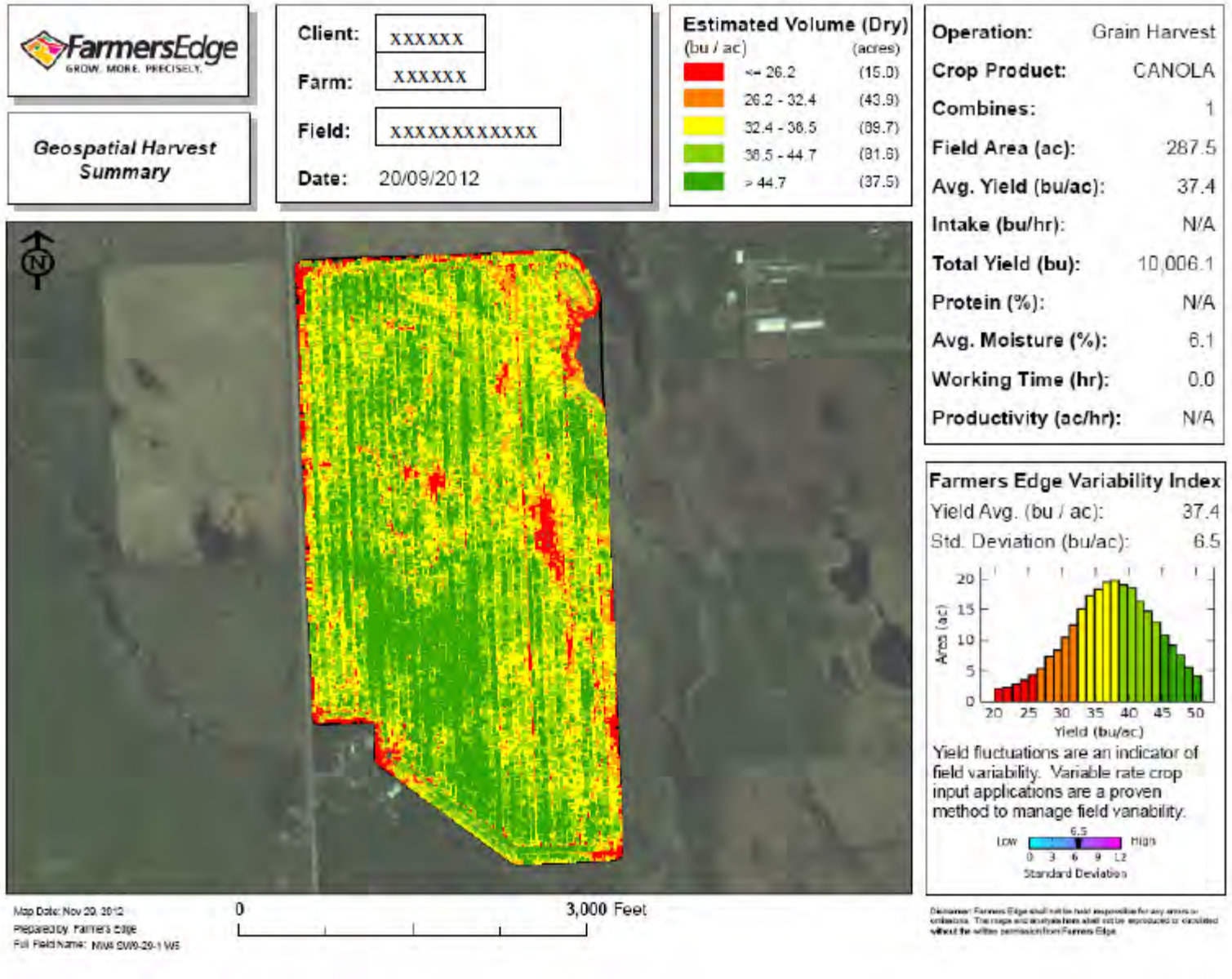
Black Label® Zn



Right On™
PLANT PROTECTANTS
SEED TREATMENTS

DDP® Micronutrients

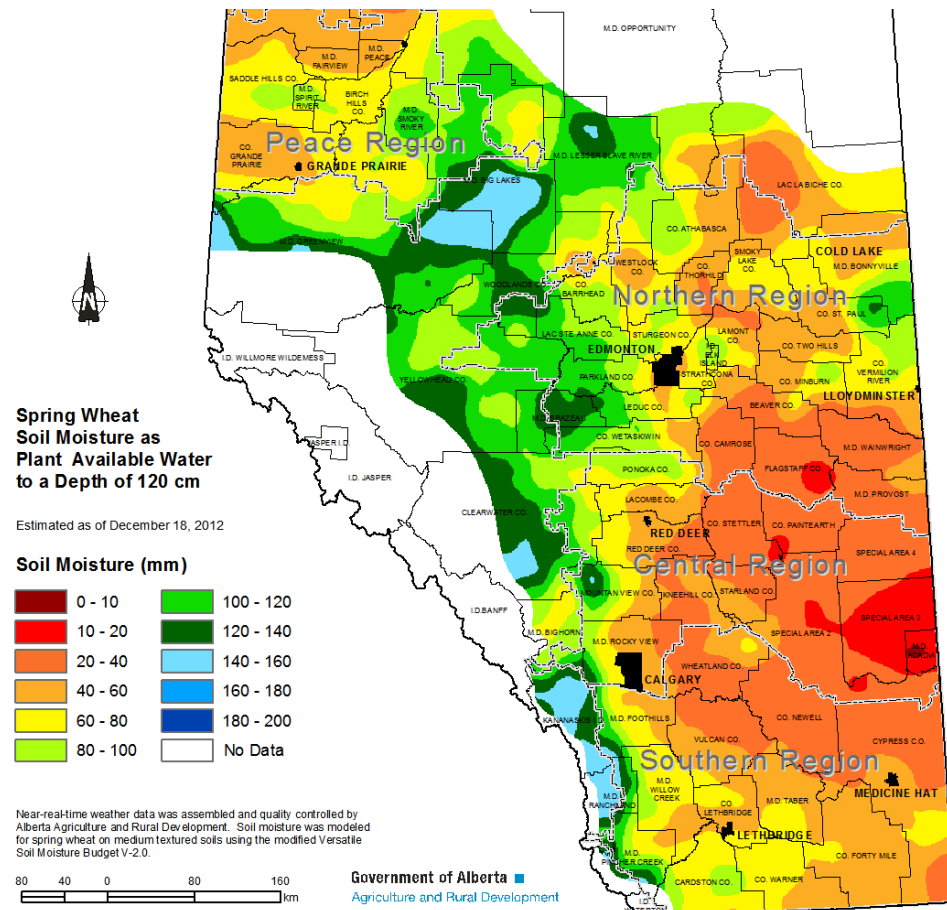
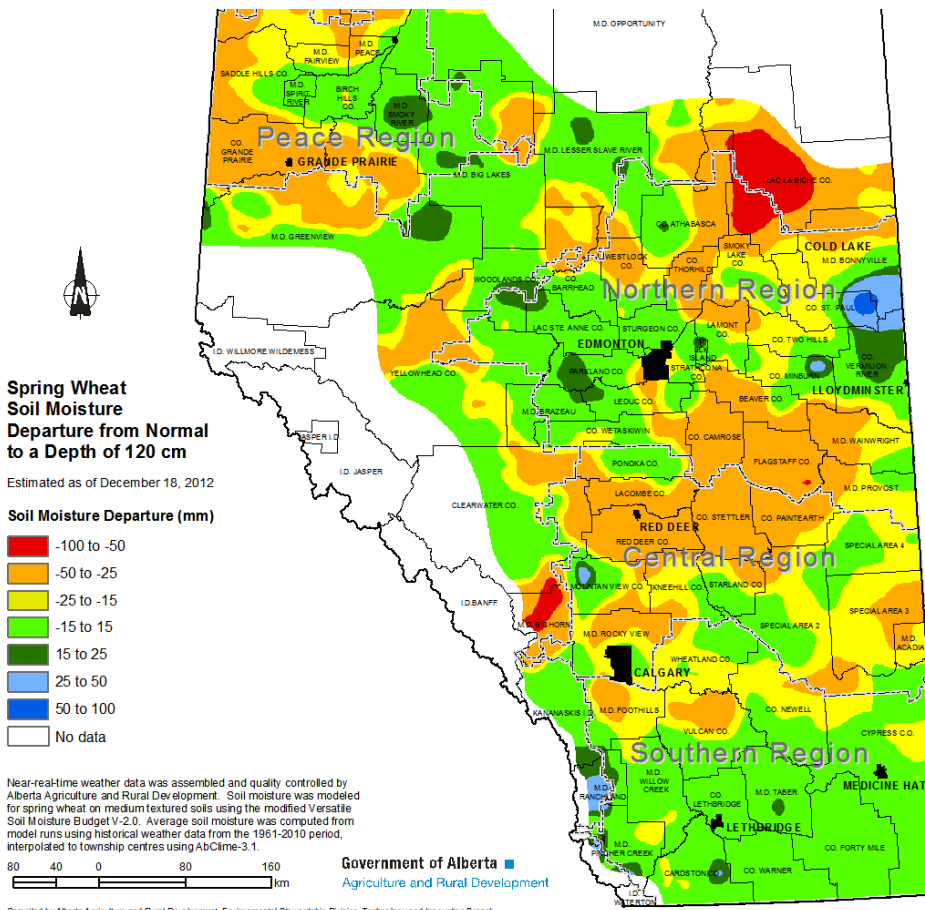
V R T



Escapes, Herbicide Performance Issue or Resistance?



Soil Moisture – Dec 18, 2012



Comments / Questions

Norm Flore
MAS, Calgary

(403) 279-1155 office
(403) 710-5348 cell

norm.flore@viterra.com

