

2001 Agriculture Profile - 1. Farms and the Land

	Saddle Hills Co.	Alberta
Total Population	2,566	2,974,807
Urban Population	0	2,405,160
Rural Population	2,566	569,647
<i>Rural as % of Total Population</i>	<i>100</i>	<i>19</i>
Number of Farms (1)	574	53,652
Average Farm Size (acres)	1,110	970
Average Per Reporting Farm	Dollars	
Net Farm Operating Income (2)	16,184	23,764
Farm Capital	645,430	1,029,903
Farm Operating Expenses	85,461	166,043
Gross Farm Receipts	98,644	184,885
Area in Crops (acres)	641	522
Seeded Area of Wheat (acres)	358	439
Number of Beef Cows (head)	75	74
Number of Pigs (head)	63	757

Farm Operating Arrangements (3)	# Farms	% Distr.
Sole Proprietorship	350	61.0
Partnership	166	28.9
With Written Agreement	18	3.1
Without Written Agreement	148	25.8
Corporation	56	9.8
Family	50	8.7
Non-Family	6	1.0
Other*	2	0.3
Total Farms	574	100.0

Farms by Total Farm Area	# Farms	% Distr.
Under 10 Acres	1	0.2
10 to 129 Acres	19	3.3
130 to 239 Acres	77	13.4
240 to 399 Acres	77	13.4
400 to 559 Acres	50	8.7
560 to 759 Acres	63	11.0
760 to 1,119 Acres	101	17.6
1,120 Acres and Over	186	32.4
1,120 to 1,599 Acres	73	12.7
1,600 to 2,239 Acres	50	8.7
2,240 to 2,879 Acres	27	4.7
2,880 to 3,519 Acres	12	2.1
3,520 Acres and Over	24	4.2
Total Farms	574	100.0

Farms by Type (4)	# Farms	% Distr.
Dairy	4	0.7
Cattle (Beef)	174	32.2
Hog	3	0.6
Poultry and Egg	0	0.0
Wheat	54	10.0
Grain and Oilseed (Except Wheat)	134	24.8
Field Crop (Except Grain and Oilseed)	99	18.3
Fruit	0	0.0
Vegetable	0	0.0
Miscellaneous Speciality	47	8.7
Livestock Combination	8	1.5
Other Combination	17	3.1
Total Farms Classified	540	100.0

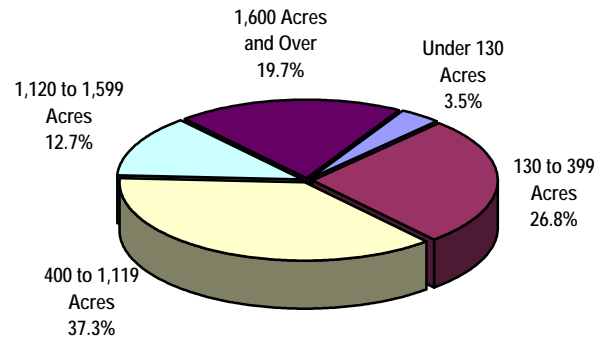
Land Tenure (5)	# Farms	Acres	% Acres
Total Area Owned	559	444,191	69.7
Total Area Rented/Leased/Crop Shared	270	192,902	30.3
Rented/Leased from Government	93	74,358	11.7
Rented/Leased from Others	202	108,357	17.0
Crop Shared from Others	34	10,187	1.6
Total Area of Farms	574	637,093	100.0

Farms by Use of Land	# Farms	Acres	% Acres
Total Land in Crops	542	347,386	54.5
Summerfallow	223	47,418	7.4
Total Pasture Land	...	158,645	24.9
Tame or Seeded Pasture	239	65,991	10.4
Natural Land for Pasture	236	92,654	14.5
All Other Land (6)	465	83,644	13.1
Total Area of Farms	574	637,093	100.0

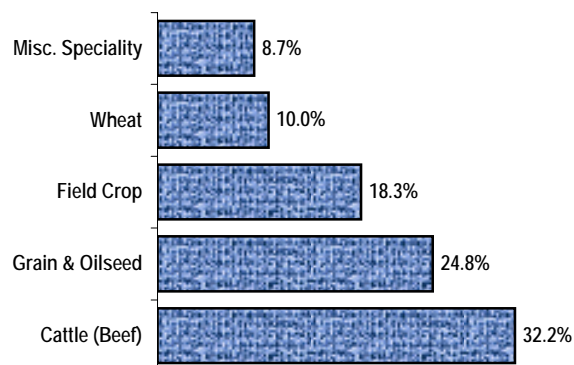
Paid Agricultural Labour (7)	# Farms	# Weeks	% Weeks
Year Round	91	4,895	64.6
Seasonal or Temporary	187	2,682	35.4
Total Paid Labour	251	7,577	100.0

Use of Personal Computers for Farm Management	
Number of Farms Reporting Use	209
% of Total Farms	36.4

Distribution of Farms by Size



Top Five Farm Types



Regional values do not include municipalities where confidentiality applies. x - Confidential "# Farms" refers to number of farms reporting

*Institutions, Community Pastures, etc. "% Distr." refers to % of total ...not available

Source: Statistics Canada, 2001 Census of Agriculture

Refer to Census definitions and notes for more information

Prepared by: Statistics and Data Development Unit, Alberta Agriculture, Food and Rural Development

2001 Agriculture Profile - 2. Financial Characteristics

	Saddle Hills County	Alberta
Number of Farms	574	53,652
Average Per Reporting Farm		
	Dollars	
Net Farm Operating Income (2)	16,184	23,764
Farm Capital	645,430	1,029,903
Farm Operating Expenses	85,461	166,043
Farm Interest Expenses	11,256	14,319
Gross Farm Receipts	98,644	184,885

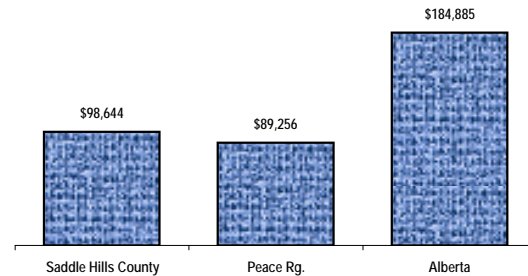
Farm Capital	# Farms	\$ '000	% Distr.
Machinery and Equipment (8)	574	92,953	25.1
Livestock and Poultry	342	46,575	12.6
Land and Buildings (9)	574	230,949	62.3
Owned	563	184,243	49.7
Rented or Leased from Others	272	46,705	12.6
Total Farm Capital	574	370,477	100.0

Farms Classified by Farm Capital	# Farms	% Distr.
Under \$50,000	3	0.5
\$50,000 - \$99,999	12	2.1
\$100,000 - \$199,999	97	16.9
\$200,000 - \$349,999	118	20.6
\$350,000 - \$499,999	96	16.7
\$500,000 - \$999,999	150	26.1
\$1,000,000 - \$1,499,999	55	9.6
\$1,500,000 and Over	43	7.5
Total Farms	574	100.0

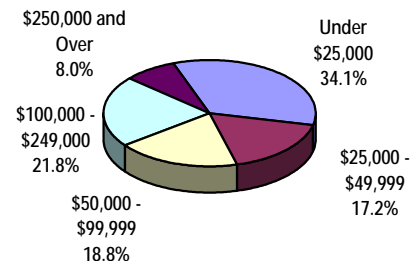
Farm Operating Expenses (10)	# Farms	\$ '000	% Distr.
Farm Interest Expenses	396	4,457	9.1
Custom and Contract Work	326	2,356	4.8
Rent/Leasing of Land and Buildings	224	1,490	3.0
Rent/Leasing of Mach./Equip./Vehicles	113	627	1.3
Wages and Salaries	251	2,949	6.0
Paid to Family Members	177	1,723	3.5
Paid to all Other Persons	136	1,226	2.5
All Fuel Expenses	565	5,253	10.7
Repair/Maint. to Mach./Equip./Vehicles	546	4,603	9.4
Fertilizer and Lime Purchases	385	7,167	14.6
Herbicides/Insecticides/Fungicides	326	3,900	8.0
Seed/Seedling Purchases	357	1,848	3.8
Livestock and Poultry Purchases	210	4,919	10.0
Veterinary Services, Drugs, etc.	274	565	1.2
Feed and Supplement Purchases	284	2,110	4.3
Electricity/Telephone/Telecom.	542	1,344	2.7
Repair/Maint. to Farm Bldgs./Fences	451	1,068	2.2
All Other Expenses	549	4,398	9.0
Total Operating Expenses	574	49,055	100.0

Owned and Leased Machinery	Total	Owned Number	Leased
Tractors	1,812	1,799	13
Farm Trucks	1,708	1,690	18
Pick-ups and Cargo Vans	1,014	x	x
Other Farm Trucks	694	x	x
Cars/Passenger Vehicles	320	317	3
Combines	513	506	7
Swathers/Mower Conditioners	618	x	x
Balers	329	x	x
Forage Harvesters	40	40	0
Tillage/Cult./Seed./Plant. Equip.	1,988	1,974	14
Total Gross Farm Receipts (11)		\$ '000	% Alta.
		56,622	0.6
Farms by Gross Farm Receipts		# Farms	% Distr.
Under \$25,000		196	34.1
Under \$10,000		94	16.4
\$10,000 - \$24,999		102	17.8
\$25,000 - \$49,999		99	17.2
\$50,000 - \$99,999		108	18.8
\$100,000 and Over		171	29.8
\$100,000 - \$249,999		125	21.8
\$250,000 - \$499,999		30	5.2
\$500,000 and Over		16	2.8
Total Farms		574	100.0

Average Gross Receipts Per Farm



Distribution of Farms by Class of Gross Farm Receipts



Regional values do not include municipalities where confidentiality applies. x - Confidential
 "% Distr." refers to % of total "% Alta." refers to the municipality as a % of Alberta

"# Farms" refers to number of farms reporting

Source: Statistics Canada, 2001 Census of Agriculture

Refer to Census definitions and notes for more information

Prepared by: Statistics and Data Development Unit, Alberta Agriculture, Food and Rural Development

2001 Agriculture Profile - 3. Crops and Land Management

Grains*	# Farms	Acres	% Alta.
Total Wheat	213	76,283	1.1
Spring Wheat (Excl. Durum) (12)	206	72,563	1.2
Durum Wheat	4	x	x
Winter Wheat (13)	4	x	x
Oats	194	30,647	2.2
Barley	117	24,520	0.5
Mixed Grains	5	948	0.2
Corn for Grain	0	0	0.0
Buckwheat	0	0	0.0
Total Rye	7	1,369	1.2
Fall Rye (13)	5	x	x
Spring Rye	2	x	x

Oilseeds*	# Farms	Acres	% Alta.
Canola	131	46,268	1.7
Flaxseed	4	635	1.6
Soybeans	0	0	0.0
Mustard Seed	0	0	0.0
Sunflowers	0	0	0.0
Safflower	0	0	0.0

Other Field Crops* (14)	# Farms	Acres	% Alta.
Potatoes	0	0	0.0
Dry Field Peas	27	5,686	0.9
Lentils	0	0	0.0
Total Dry Field Beans	0	0	0.0
Dry White Beans	0	0	0.0
Chick Peas	0	0	0.0
Other Dry Beans	0	0	0.0
Canary Seed	0	0	0.0
Sugar Beets	0	0	0.0
Triticale	2	x	x
Forage Seed for Seed	149	55,411	13.5
All Other Field Crops	7	1,020	4.8

Hay and Fodder Crops* (14)	# Farms	Acres	% Alta.
Corn for Silage	0	0	0.0
Alfalfa and Alfalfa Mixtures	192	41,387	1.1
All Other Tame Hay and Fodder Crc	248	62,769	2.8

Selected Vegetables Grown for Sale (15)	# Farms	Acres	% Alta.
Sweet Corn	1	x	x
Tomatoes	0	·	0.0
Cucumbers	0	0	0.0
Green Peas	0	0	0.0
Green or Wax Beans	0	0	0.0
Cabbage	0	0	0.0
Cauliflower	0	0	0.0
Broccoli	0	0	0.0
Carrots	0	0	0.0
Rutabagas and Turnips	0	0	0.0
Beets	0	0	0.0
Radishes	0	0	0.0
Dry Onions	0	0	0.0
Shallots, Green or Seed Onions	0	0	0.0
Lettuces	0	0	0.0
Squash, Pumpkins and Zucchini	0	0	0.0
Total Vegetables	1	x	x

Fruits, Berries and Nuts	# Farms	Acres	% Alta.
Grown For Sale (16)			
Producing Area of Fruits/Berries/Nuts	3	x	x
Producing Area of Strawberries	0	0	0.0
Producing Area of Raspberries	1	x	x
Area of Nursery Products	2	x	x
Area of Christmas Trees			
Grown For Sale (17)	1	x	x
	# Farms	Dollars	% Alta.
Sales of Forest Products	18	233,508	3.3

Greenhouse Products	# Farms	Sq. Feet	% Alta.
Total Area Under Protection	2	x	x
Area in Use on May 15, 2001	2	x	x
Flowers	2	x	x
Vegetables	1	x	x
Other Greenhouse Products	0	0	0.0

Mushroom Houses	# Farms	Acres	% Alta.
Total Growing Area	0	0	0.0

Land Management	# Farms	Acres	% Alta.
Total Number of Farms	574	637,093	1.2
Use of Irrigation	2	x	x
Use of Commercial Fertilizer	345	238,422	1.4
Use of Herbicides (18)	301	216,860	1.3
Use of Insecticides (18)	28	16,272	1.9
Use of Fungicides (18)	16	11,782	0.9

Tillage Practices	# Farms	Acres	% Alta.
Area Prepared for Seeding	431	217,111	1.2
Incorporating Most Residue into Soil	341	114,624	1.7
Retaining Most Residue on Surface	103	62,047	0.9
No Tillage Prior to Seeding	46	40,440	0.8

Manure Application (19)	# Farms	Acres	% Alta.
Using a Solid Spreader	64	4,045	0.4
Using an Irrigation System	0	0	0.0
Using a Liquid Spreader (On Surface)	3	205	0.1
Using a Liquid Spreader (Injected)	0	0	0.0

Forms of Weed Control Use on Summerfallow Land	# Farms	Acres	% Alta.
Total Summerfallow Land	223	47,418	1.6
Chemical Only	31	3,421	0.5
Tillage Only	108	22,663	1.9
Tillage and Chemical Combination	108	21,334	1.9

Farms Reporting Soil Conservation Practices (20)	# Farms	% of Total Farms
Crop Rotation	411	71.6
Permanent Grass Cover	198	34.5
Winter Cover Crops	4	0.7
Contour Cultivation	7	1.2
Strip-Cropping	10	1.7
Grassed Waterways	99	17.2
Windbreaks or Shelterbelts	124	21.6

Regional values do not include municipalities where confidentiality applies. x - Confidential # Farms* refers to number of farms reporting

% Alta.* refers to the municipality as a % of Alberta Asterisk (*) refers to seeded acreage

Source: Statistics Canada, 2001 Census of Agriculture

Refer to Census definitions and notes for more information

Prepared by: Statistics and Data Development Unit, Alberta Agriculture, Food and Rural Development

Saddle Hills County

2001 Agriculture Profile - 4. Livestock, Poultry and Farm Machinery

Cattle and Calves (21)	# Farms	Head	% Alta.
Total Cows	224	16,893	0.8
Dairy Cows	12	225	0.3
Beef Cows	221	16,668	0.8
Heifers	162	4,423	0.4
Bulls	190	705	0.6
Steers	55	1,121	0.1
Calves	218	14,186	0.7
Total Cattle and Calves	235	37,328	0.6

Pigs (22)	# Farms	Head	% Alta.
Boars	8	12	0.1
Sows and Gilts for Breeding	12	135	0.1
Nursing and Weaner Pigs	8	502	0.1
Grower and Finishing Pigs	19	737	0.1
Total Pigs	22	1,386	0.1

Sheep and Lambs	# Farms	Head	% Alta.
Rams	21	60	0.9
Ewes	32	1,980	1.5
Lambs	27	1,493	0.9
Total Sheep and Lambs	34	3,533	1.1

Other Livestock (23)	# Farms	Head	% Alta.
Horses and Ponies	151	1,225	0.8
Goats	23	599	1.4
Rabbits	5	94	1.7
Mink	0	0	0.0
Fox	0	0	0.0
Bison (Buffalo)	22	2,270	2.8
Deer (Excluding Wild Deer)	1	x	x
Elk	13	484	1.5
Llamas and Alpacas	9	53	0.4
Wild Boars	1	x	x

Colonies of Bees (24)	# Farms	Colonies	% Alta.
Alberta	467	209,821	100.0
Saddle Hills County	4	2,635	1.3

Poultry Inventory	# Farms	Number	% Alta.
Total Hens and Chickens	55	13,393	0.1
Broilers, Roasters, Cornish	24	10,833	0.1
Pullets for Laying (under 19 wks.)	9	425	0.0
Laying Hens (19 wks and over)	43	2,135	0.1
Laying Hens (Hatchery Supply Flock)	0	0	0.0
Turkeys	8	100	0.0
Other Poultry	9	74	0.0

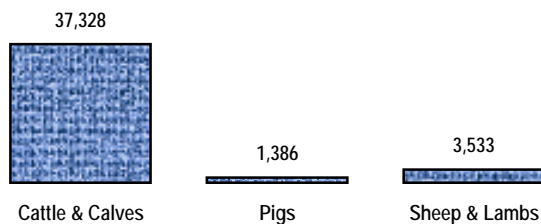
Poultry Production	# Farms	Kilograms	% Alta.
Broilers/Roasters/Cornish Production	4	x	x
Turkey Production	1	x	x

Chicks or Other Poultry Hatched	# Farms	Number	% Alta.
	0	0	0.0

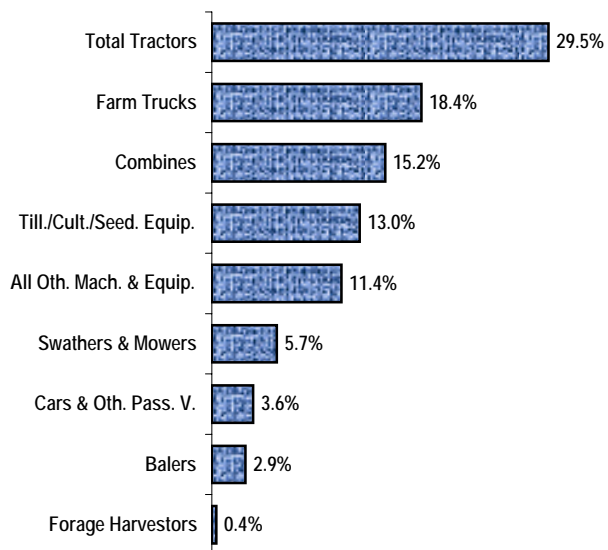
Market Value of Farm Machinery and Equipment (8)

	# Farms	Number	\$ '000
Total Tractors	542	1,812	27,418
Total Farm Trucks	551	1,708	17,063
Pick-ups and Cargo Vans	536	1,014	10,895
Other Farm Trucks	381	694	6,168
Cars and Other Passenger Vehicles	278	320	3,373
Swathers and Mower Conditioners	426	618	5,280
Combines	393	513	14,121
Balers	260	329	2,738
Forage Harvestors	37	40	360
Tillage/Cultivation/Seeding Equip.	470	1,988	12,041
Irrigation Equipment	3	n/a	2
Other*	431	n/a	10,557

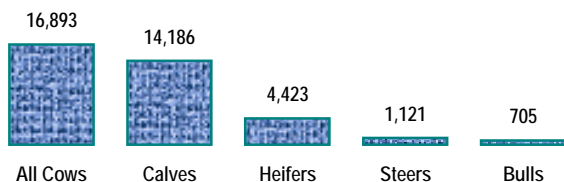
**Livestock Inventory, May 15, 2001
(Number of Head)**



**Per Cent Distribution of Total Market Value
of Machinery and Equipment**



**Cattle Inventory, May 15, 2001
(Number of Head)**



Regional values do not include municipalities where confidentiality applies. x - Confidential "# Farms" refers to number of farms reporting

* Other Machinery, Workshop and Office Equipment "% Alta." refers to the municipality as a % of Alberta n/a - not applicable

Source: Statistics Canada, 2001 Census of Agriculture

Refer to Census definitions and notes for more information

Prepared by: Statistics and Data Development Unit, Alberta Agriculture, Food and Rural Development