

Alberta Farm Income in 2008.....

Table No.

1. Selected Farm Income Statistics, Canada and Provinces, 2004-2008 .....
2. Farm Cash Receipts by Type, Alberta and Canada, 2007 and 2008 .....
3. Alberta Farm Cash Receipts by Type, 1979-2008 .....
4. Alberta Farm Cash Receipts From the Sale of Crops, 1979-2008 .....
5. Alberta Farm Cash Receipts From the Sale of Livestock, 1979-2008 .....
6. Alberta Farm Operating Expenses and Depreciation, 1979-2008 .....
7. Alberta Net Farm Income, 1979-2008.....
8. Value of Alberta Farm Capital and Value Per Acre of Farm Land and Buildings, at July 1, 1979-2008..
9. Alberta Farm Debt Outstanding by Lender at December 31, 1979-2008 .....

**Measures of Net Farm Income (1) - Definitions**

The agriculture economic statistics program uses three aggregate measures of net farm income:

**Net cash income** measures farm business cash flow (gross revenue minus operating expenses) generated from the production of agricultural goods. Net cash income represents the amount of money available for debt repayment, investment or withdrawal by the owner.

**Realized net income (RNI)** measures the financial flows, both monetary (cash income) and non-monetary (depreciation and income-in-kind), of farm businesses. Similar to net cash income, realized net income represents the net farm income from transactions in a given year, regardless of the year the agricultural goods were produced.

**Total net income** measures the financial flows and stock changes of farm businesses. Total net income values agriculture economic production during the year that the agricultural goods were produced. It represents the return to owner's equity, unpaid labour, management and risk.

**Components of Net Farm Income Measures**

**Farm cash receipts** include revenues from the sale of agricultural commodities, program payments from government agencies, and payments from private crop and livestock insurance programs. Receipts are recorded in the calendar year (January-December) when the money is paid (cash basis) to farmers. Farm to farm sales are excluded. They are assumed to cancel each other out, and have no net impact.

**Farm operating expenses** represent business costs incurred by farm businesses for goods and services used in the production of agricultural commodities. Expenses, which are recorded when the money is disbursed by the farmer, include property taxes, custom work, livestock purchases, rent, fertilizer and lime, pesticides, machinery and building repairs, fuel for heating and machines, wages, interest and business share of insurance premiums.

**Income-in-kind** measures the value of the agricultural goods produced on farms and consumed by farm operator families. It is included to measure total farm production. There is no monetary disbursement related to income-in-kind. It is calculated using Statistics Canada estimates of per capita food consumption, coupled with Census (2) measurements of the farm population and the average prices that producers would have received in the marketplace.

**Depreciation charges** account for the economic depreciation or for the loss in fair market value of the capital assets of the farm business. There is no monetary disbursement associated with depreciation. Calculated on farm buildings, farm machinery, and the farm business share of autos, trucks and the farm home, depreciation is generally considered to be the result of aging, wear and tear, and obsolescence. It represents a decrease in the potential economic benefits that can be generated by the capital asset.

**Value of inventory change (VIC)** measures the dollar value of the physical change in producer-owned inventories. This concept is used to value total agricultural economic production. To calculate VIC, the change in producer-owned inventories (between the end and the beginning of a calendar year) is first derived and then multiplied by the average annual crop prices or value per animal. This calculation is different from the financial or accounting book value approach, which values the beginning and ending stocks, and then derives the change.

(1) Source: Adapted from Agriculture and Agri-Food Canada and Statistics Canada, *Understanding Measurements of Farm Income*, Publication No. 2060/B and Cat. No. 21-525-XIE, November 2000, Section 1 "Agriculture Economic Statistics Program Measures".

(2) Statistics Canada, Census of Population

# Alberta Farm Income in 2008

---

## Farm Cash Receipts

Alberta's total farm cash receipts (FCR) increased substantially in 2008, to a new industry high of \$10.0 billion. FCR is the sum of crop and livestock market receipts plus program payments to producers. The record receipts were 15.5 per cent higher than in 2007, and 26.9 per cent above the five-year average (2003-2007). Fuelling the growth were record crop market receipts and higher program payments, which more than offset a marginal decline in livestock market receipts. Alberta's total farm market receipts (FCR excluding program payments) increased 14.3 per cent from 2007, to a new all-time high of \$8.9 billion.

Crop market receipts jumped 33.1 per cent from 2007, to a record \$4.6 billion. The increase was driven mainly by stronger prices for most major crops. Showing significant gains in receipts to new record highs were canola and wheat (including durum). Canola receipts rose by 53.4 per cent from a year earlier, to \$1.9 billion, while wheat receipts (including durum) gained 41.3 per cent from 2007, to \$1.8 billion. Also, setting a new record high in 2008 were receipts for dry peas, which were up 8.1 per cent from last year, to \$122.1 million. Increasing as well, were receipts for barley, up 3.7 per cent, to \$331.0 million, and potatoes, which rose to \$154.8 million, or up 11.2 per cent from 2007.

Livestock market receipts fell marginally, by 0.9 per cent, from 2007, to \$4.2 billion in 2008. The decline in livestock receipts was attributed mainly to a drop in receipts for cattle and calves and hogs, as a result of generally lower marketings and prices. Cattle and calf receipts decreased by 1.9 per cent, to \$3.0 billion, but remained 4.9 per cent above the five-year average (2003-2007). Hog receipts fell for the fourth consecutive year, to \$397.4 million, down 7.9 per cent. In the supply-managed sector, dairy and poultry receipts climbed to new industry highs in 2008, fuelled by stronger prices and marketings. Dairy receipts climbed 7.6 per cent, to a record \$459.3 million. Poultry receipts (hens, chickens and turkeys), rose 16.3 per cent, to \$209.8 million. Also showing gains were egg receipts, which increased by 14.7 per cent, to \$50.3 million.

## Direct Program Payments

Direct program payments to Alberta producers increased in 2008, rising 25.5 per cent from 2007, to \$1.1 billion. The increase in payments was supported by higher payments under the Canadian Agricultural Income Stabilization Program (CAIS), which includes programs such as the CAIS Inventory Transition Initiative and the Alberta Farm Recovery Plan and Growing Forward programs (including AgriStability), rose by 39.3 per cent, to \$695.9 million, and by Crop and Hail Insurance, increasing by 30.8 per cent, to \$344.6 million. Crop and Hail Insurance payments increased by 30.8 per cent to \$344.6 million, due to higher claims. The Net Income Stabilization Account (NISA) withdrawals fell 13.8 per cent, to \$48.9 million.

## Farm Operating Expenses and Net Farm Income

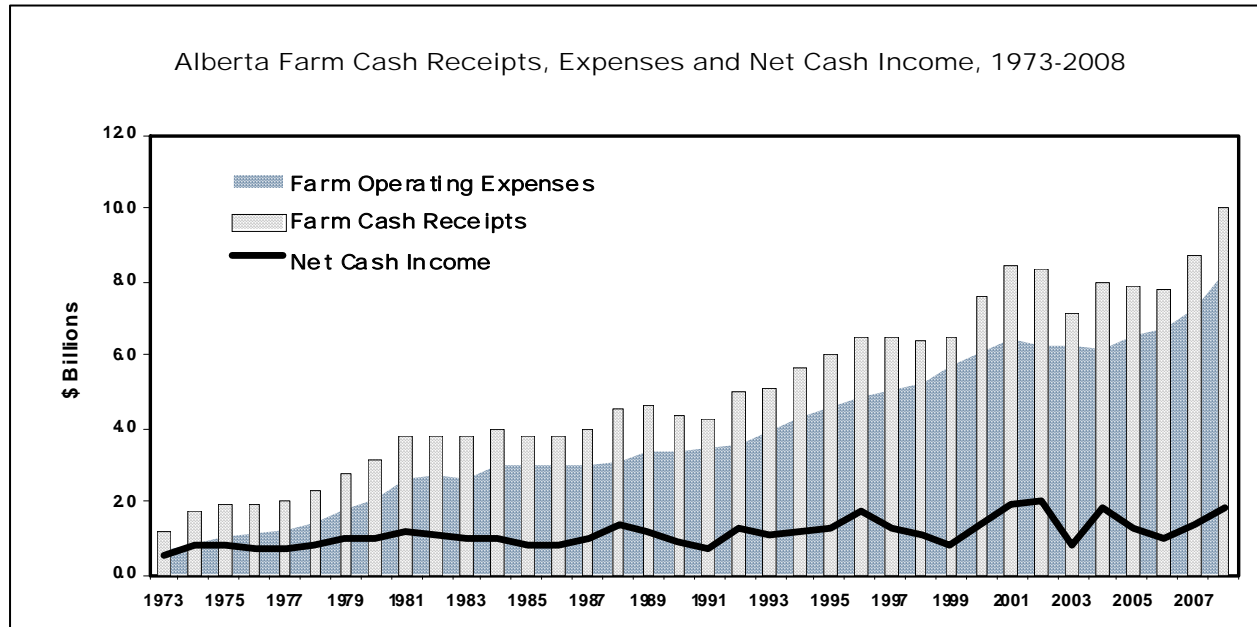
In 2008, Alberta producers spent an estimated \$8.3 billion in farm operating expenses (net of rebates), setting a new record high and, up 12.8 per cent from 2007. In particular, fertilizer and lime expenses jumped 48.0 per cent to \$1.2 billion, due to a sharp increase in price. Other notable increases included expenses on commercial feed which rose 13.6 per cent to \$1.3 billion, and machinery fuel and repairs, up 14.6 per cent, to \$1.2 billion. However, there was a decline in livestock and poultry purchases which fell by 4.2 per cent, to \$656.4 million.

Alberta's farm income situation showed a marked improvement in 2008, compared to 2007. As a result of the record FCR more than offsetting the record expenses, the province's net cash income (or FCR less farm operating expenses) increased 29.8 per cent from 2007, to \$1.8 billion, the fourth highest on record. After adjusting net cash income for depreciation (a non-cash cost of \$1.3 billion), the resulting realized net income (RNI) was substantially improved at \$451.6 million, up from \$108.5 million in 2007. Also, total net income (which adjusts RNI for value of inventory change) jumped to \$1.2 billion, from negative \$194.4 million a year earlier.

## Farm Debt and Capital Values

Alberta's total farm debt outstanding on December 31, 2008 was \$12.7 billion, up 7.4 per cent from a year earlier. Chartered banks were owed \$5.5 billion (43.4 per cent of the total farm debt), rising 6.3 per cent from 2007. The next largest group of lenders consisted of federal government agencies such as Farm Credit Corporation and Business Development Bank of Canada. This group was owed \$2.9 billion (22.6 per cent of total farm debt), increasing 16.5 per cent from 2007. Provincial government agencies such as Agriculture Financial Services Corporation followed with a total of \$2.4 billion in loans to Alberta producers (18.9 per cent of total farm debt), up 2.4 per cent from a year ago. Credit Unions were also a source of credit, accounting for \$729.4 million in loans to farmers (5.8 per cent of total farm debt), up 0.7 per cent from 2007. Other lenders, including insurance and trust companies, were owed a total of \$964.0 million, down 1.1 per cent from a year ago (7.6 per cent of total farm debt).

The total value of farm capital (land and buildings, machinery and equipment, and livestock and poultry), at July 1, reached a new record high in 2008, of \$87.3 billion. Since 1993, farm capital value has steadily increased, and was up 10.7 per cent from 2007. The increase was attributed to all-time highs in the value of land and buildings, along with machinery and equipment, which more than offset a decline in the value of livestock and poultry. The value of land and buildings increased 14.2 per cent, to \$72.8 billion, while the value of machinery and equipment rose 2.9 per cent, to \$10.1 billion. The value of livestock and poultry fell to \$4.4 billion, down 16.7 per cent from 2007.



Source: Statistics Canada; and Alberta Agriculture and Rural Development, Statistics and Data Development Branch

Table 1: Selected Farm Income Statistics, Canada and Provinces, 2004-2008

	Canada	Alberta	Sask.	Manitoba	British Columbia	Ontario	Quebec	Atlantic Provinces
\$'000								
Total Farm Cash Receipts (Market Receipts plus Program Payments)								
2004r.....	36,338,224	8,013,369	5,892,158	3,857,541	2,359,838	8,597,499	6,302,425	1,315,417
2005r.....	36,743,561	7,855,071	6,209,683	3,804,476	2,372,451	8,911,087	6,222,088	1,368,745
2006r.....	36,949,543	7,811,201	6,626,761	3,686,512	2,288,617	8,853,344	6,274,096	1,409,036
2007r.....	40,736,355	8,668,198	7,730,118	4,327,317	2,416,658	9,289,623	6,905,148	1,399,329
2008p.....	45,946,150	10,008,739	9,432,925	4,703,833	2,612,318	10,229,756	7,498,101	1,460,488
Total Farm Cash Receipts - % Share of Canada								
2004r.....	100.0	22.1	16.2	10.6	6.5	23.7	17.3	3.6
2005r.....	100.0	21.4	16.9	10.4	6.5	24.3	16.9	3.7
2006r.....	100.0	21.1	17.9	10.0	6.2	24.0	17.0	3.8
2007r.....	100.0	21.3	19.0	10.6	5.9	22.8	17.0	3.4
2008p.....	100.0	21.8	20.5	10.2	5.7	22.3	16.3	3.2
Crop Market Cash Receipts								
2004r.....	14,420,425	2,656,410	3,255,403	1,811,906	1,168,652	3,557,651	1,449,254	521,172
2005r.....	13,948,283	2,412,682	3,092,347	1,297,673	1,068,244	3,622,686	1,465,707	538,965
2006r.....	14,595,189	2,616,606	3,632,773	1,279,306	1,060,188	3,831,370	1,545,408	629,557
2007r.....	18,425,255	3,473,199	5,166,352	2,188,467	1,154,638	4,181,805	1,678,199	582,614
2008p.....	23,075,675	4,622,082	7,069,669	2,710,150	1,232,349	4,732,778	2,088,292	620,362
Livestock and Livestock Products Market Cash Receipts								
2004r.....	17,055,534	3,914,271	1,447,037	1,615,370	1,003,634	4,365,455	4,018,363	691,404
2005r.....	18,321,856	4,325,420	1,794,104	1,808,075	1,183,979	4,487,931	4,007,040	715,326
2006r.....	17,820,680	4,249,481	1,726,797	1,781,120	1,123,283	4,359,841	3,870,988	709,175
2007r.....	18,218,193	4,288,029	1,693,222	1,726,254	1,161,479	4,510,918	4,092,567	745,741
2008p.....	18,742,990	4,248,810	1,725,825	1,671,521	1,281,074	4,729,310	4,317,791	768,662
Total Farm Market Receipts (Crops plus Livestock and Livestock Products)								
2004r.....	31,475,959	6,570,681	4,702,440	3,427,276	2,172,286	7,923,106	5,467,617	1,212,576
2005r.....	32,270,139	6,738,102	4,886,451	3,105,748	2,252,223	8,110,617	5,472,747	1,254,291
2006r.....	32,415,869	6,866,087	5,359,570	3,060,426	2,183,471	8,191,211	5,416,396	1,338,732
2007r.....	36,643,448	7,761,228	6,859,574	3,914,721	2,316,117	8,692,723	5,770,766	1,328,355
2008p.....	41,818,665	8,870,892	8,795,494	4,381,671	2,513,423	9,462,088	6,406,083	1,389,024
Program Payments								
2004.....	4,862,265	1,442,688	1,189,718	430,265	187,552	674,393	834,808	102,841
2005.....	4,923,422	1,116,969	1,323,232	698,728	120,228	800,470	749,341	114,454
2006.....	4,533,674	945,114	1,267,191	626,086	105,146	662,133	857,700	70,304
2007.....	4,092,907	906,970	870,544	412,596	100,541	596,900	1,134,382	70,974
2008p.....	4,127,485	1,137,847	637,431	322,162	98,895	767,668	1,092,018	71,464
Farm Operating Expenses After Rebates								
2004r.....	29,407,456	6,235,036	4,888,446	3,099,074	1,937,134	7,224,221	4,924,613	1,098,932
2005r.....	30,130,977	6,571,364	5,140,220	3,011,675	2,033,051	7,381,178	4,876,993	1,116,496
2006r.....	31,189,456	6,785,629	5,274,364	3,212,557	2,080,097	7,592,905	5,078,134	1,165,771
2007r.....	33,743,736	7,317,886	5,858,808	3,534,670	2,207,006	8,061,702	5,543,119	1,220,545
2008p.....	37,493,795	8,256,512	6,822,342	3,978,616	2,377,964	8,778,274	5,973,296	1,306,787

Source: Statistics Canada Cat. No.'s 21-010, 21-011, 21-012 and 21-013, "Agriculture Economic Statistics"; and Alberta Agriculture and Rural Development, Statistics and Data Development Branch

Table 1 (Cont'd.): Selected Farm Income Statistics, Canada and Provinces, 2004-2008

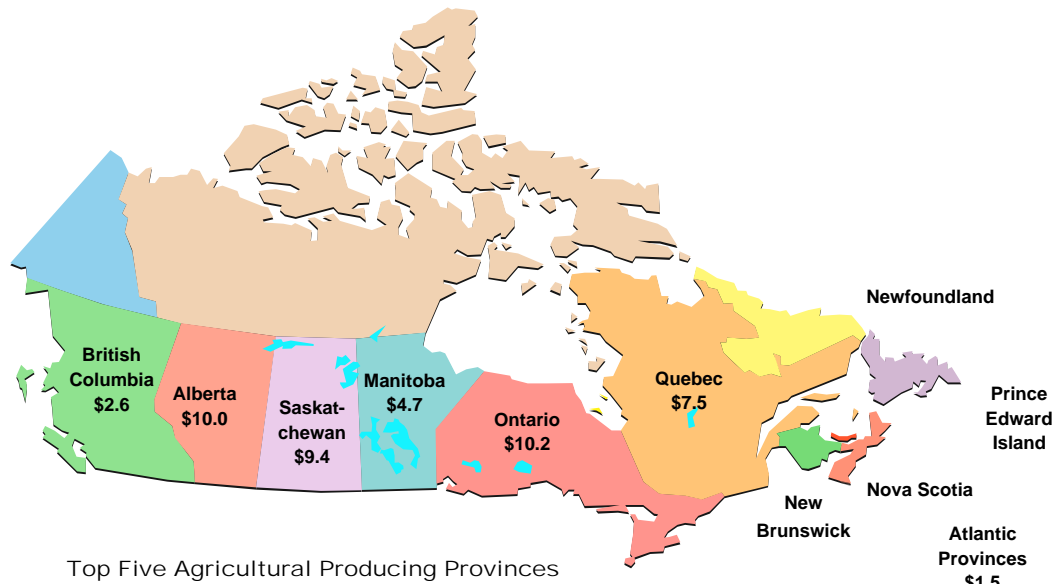
	Canada	Alberta	Sask.	Manitoba	British Columbia	Ontario	Quebec	Atlantic Provinces
\$'000								
Net Cash Income (Total Farm Cash Receipts minus Farm Operating Expenses After Rebates)								
2004r.....	6,930,768	1,778,333	1,003,712	758,467	422,704	1,373,278	1,377,812	216,485
2005r.....	6,612,584	1,283,707	1,069,463	792,801	339,400	1,529,909	1,345,095	252,249
2006r.....	5,760,087	1,025,572	1,352,397	473,955	208,520	1,260,439	1,195,962	243,265
2007r.....	6,992,619	1,350,312	1,871,310	792,647	209,652	1,227,921	1,362,029	178,784
2008p.....	8,452,355	1,752,227	2,610,583	725,217	234,354	1,451,482	1,524,805	153,701
Realized Net Farm Income								
2004r.....	2,365,665	648,632	40,948	317,218	163,053	327,953	794,778	73,104
2005r.....	1,867,209	112,527	105,764	335,876	66,896	433,224	710,675	102,254
2006r.....	957,076	-162,882	392,187	10,220	-86,464	144,218	568,233	91,583
2007r.....	2,012,045	108,538	857,656	334,599	-101,542	81,098	707,308	24,426
2008p.....	3,283,309	451,565	1,573,802	231,506	-88,194	271,407	845,554	-2,318
Total Net Farm Income								
2004r.....	4,026,406	1,155,825	862,843	248,245	135,564	643,266	913,253	67,431
2005r.....	2,441,332	409,075	740,481	96,995	21,655	422,365	659,471	91,297
2006r.....	128,617	-464,030	-196,978	301,869	-121,982	72	468,817	140,868
2007r.....	1,001,762	-194,429	503,079	249,906	-112,879	-219,987	790,078	-13,968
2008p.....	6,133,221	1,198,970	3,450,152	724,247	-133,990	262,139	687,278	-55,562
Farm Debt Outstanding at December 31								
2004r.....	48,900,125	10,880,994	6,914,244	4,891,835	3,004,147	12,146,201	9,325,823	1,736,881
2005r.....	50,209,674	10,960,682	7,198,630	5,134,296	3,028,101	12,570,367	9,527,464	1,790,134
2006r.....	52,286,528	11,547,913	7,511,499	5,413,617	3,379,045	12,748,552	9,865,905	1,819,997
2007r.....	55,110,163	11,799,044	7,437,703	5,912,928	3,914,671	13,789,456	10,329,169	1,927,192
2008p.....	57,992,038	12,671,691	7,929,917	6,291,571	4,157,902	14,240,090	10,677,031	2,023,836
Value of Farm Capital at July 1								
2004r.....	220,671,006	61,516,024	34,362,620	16,512,079	19,238,476	58,845,166	24,830,931	5,365,710
2005r.....	234,261,998	66,969,162	35,348,900	17,323,368	21,554,282	61,855,315	25,697,853	5,513,118
2006r.....	248,672,908	72,114,924	36,150,640	17,976,228	24,889,946	65,281,652	26,567,245	5,692,272
2007r.....	262,746,754	78,853,594	37,295,459	18,492,947	27,661,567	67,659,302	27,011,520	5,772,366
2008p.....	283,673,252	87,314,624	40,483,849	19,889,440	31,293,479	70,275,204	28,628,313	5,788,344
Value per Acre of Farm Land and Buildings (1) at July 1, Dollars (2)								
2004r.....	1,038	931	371	605	2,496	3,712	2,211	1,580
2005r.....	1,106	1,012	381	636	2,774	3,938	2,302	1,647
2006r.....	1,184	1,095	391	664	3,191	4,201	2,379	1,727
2007r.....	1,268	1,221	408	695	3,580	4,388	2,429	1,774
2008p.....	1,394	1,392	453	772	4,091	4,593	2,609	1,772

(1) Value per acre of farm land and buildings, at July 1, reflects the value of all farm land, including pasture and unimproved land, plus the value of farm houses, buildings, and other structures.

(2) Figures shown for Atlantic provinces are averages.

Source: Statistics Canada Cat. No.'s 21-010, 21-011, 21-012 and 21-013, "Agriculture Economic Statistics"; and Alberta Agriculture and Rural Development, Statistics and Data Development Branch

Fig. 1 Distribution of 2008 Canadian Farm Cash Receipts\* (\$ Billions)



- #1 Ontario (22.3%)
- #2 Alberta (21.8%)
- #3 Saskatchewan (20.5%)
- #4 Quebec (16.3%)
- #5 Manitoba (10.2%)

\* In 2008, total Canadian farm cash receipts, including direct program payments to producers, was \$45.9 billion.

<b>2008 Farm Cash Receipts - Alberta as a Per Cent of Canada</b>			
Selected Commodities	Alberta	Canada	Alberta as a % of Canada
	\$ Thousands		
Sugar Beets .....	23,543	23,543	100.0%
Cattle and Calves.....	2,968,137	6,492,475	45.7%
Canola.....	1,854,718	4,904,485	37.8%
Barley.....	331,031	905,230	36.6%
Forage and Grass Seed.....	23,955	75,134	31.9%
Wheat (including Durum).....	1,775,229	5,775,551	30.7%
Honey.....	26,515	88,021	30.1%
Hay and Clover.....	80,982	274,554	29.5%
Dry Peas.....	122,114	630,682	19.4%
Potatoes.....	154,802	987,165	15.7%

Source: Statistics Canada Cat. No. 21-011, "Farm Cash Receipts - Agriculture Economic Statistics"; and Alberta Agriculture and Rural Development, Statistics and Data Development Branch

Table 2: Farm Cash Receipts by Type, Alberta and Canada, 2007 and 2008

	Alberta				Canada				Alberta as a % of Canada 2008
	2007r	2008p	% of Total	% of Total	2007r	2008p	% of Total		
	\$'000	\$'000			% Chg.	\$'000		\$'000	
Crop Market Receipts									
<b>Grains and Oilseeds.....</b>	<b>2,763,052</b>	<b>3,905,727</b>	<b>41.4</b>	<b>39.0</b>	<b>10,919,108</b>	<b>14,749,842</b>	<b>35.1</b>	<b>32.1</b>	<b>26.5</b>
Wheat (including Durum).....	1,256,042	1,775,229	41.3	17.7	4,220,556	5,775,551	36.8	12.6	30.7
Oats.....	38,799	29,710	-23.4	0.3	426,846	564,800	32.3	1.2	5.3
Barley.....	319,139	331,031	3.7	3.3	827,086	905,230	9.4	2.0	36.6
Rye.....	6,939	5,225	-24.7	0.1	36,557	31,511	-13.8	0.1	16.6
Corn.....	615	2,483	303.7	0.0	1,048,099	1,545,159	47.4	3.4	0.2
Flaxseed.....	7,318	8,719	19.1	0.1	246,963	340,804	38.0	0.7	2.6
Canola.....	1,208,789	1,854,718	53.4	18.5	3,451,624	4,904,485	42.1	10.7	37.8
Soybeans.....	-	-	...	...	1,030,131	1,125,826	9.3	2.5	0.0
Deferments.....	-242,393	-356,707	47.2	...	-956,851	-1,444,207	50.9	...	24.7
Liquidations.....	167,804	255,319	52.2	2.6	588,097	1,000,683	70.2	2.2	25.5
<b>Special Crops.....</b>	<b>174,769</b>	<b>184,667</b>	<b>5.7</b>	<b>1.8</b>	<b>1,357,399</b>	<b>1,814,284</b>	<b>33.7</b>	<b>3.9</b>	<b>10.2</b>
Pulses.....	153,382	160,365	4.6	1.6	1,120,402	1,500,178	33.9	3.3	10.7
Lentils.....	589	0	-100.0	0.0	343,917	632,991	84.1	1.4	0.0
Dry Beans.....	33,428	34,058	1.9	0.3	165,097	195,624	18.5	0.4	17.4
Dry Peas.....	112,984	122,114	8.1	1.2	562,747	630,682	12.1	1.4	19.4
Chick Peas.....	6,381	4,193	-34.3	0.0	48,641	40,881	-16.0	0.1	10.3
Mustard Seed.....	21,387	24,302	13.6	0.2	90,396	145,474	60.9	0.3	16.7
Sunflower Seed.....	0	0	...	...	70,194	58,432	-16.8	0.1	0.0
Canary Seed.....	0	0	...	...	76,407	110,200	44.2	0.2	0.0
<b>Sugar Beets.....</b>	<b>34,726</b>	<b>23543</b>	<b>-32.2</b>	<b>0.2</b>	<b>34,726</b>	<b>23,543</b>	<b>-32.2</b>	<b>0.1</b>	<b>100.0</b>
<b>Potatoes.....</b>	<b>139,201</b>	<b>154802</b>	<b>11.2</b>	<b>1.5</b>	<b>866,675</b>	<b>987,165</b>	<b>13.9</b>	<b>2.1</b>	<b>15.7</b>
<b>Fruits and Vegetables.....</b>	<b>86,085</b>	<b>87,221</b>	<b>1.3</b>	<b>0.9</b>	<b>2,499,969</b>	<b>2,574,000</b>	<b>3.0</b>	<b>5.6</b>	<b>3.4</b>
Greenhouse Vegetables.....	37,345	36,471	-2.3	0.4	805,812	799,834	-0.7	1.7	4.6
Other Vegetables.....	46,918	48,652	3.7	0.5	977,645	1,030,703	5.4	2.2	4.7
Total Tree Fruits.....	37	58	56.8	0.0	252,763	253,456	0.3	0.6	0.0
Total Small Fruits.....	1,785	2,040	14.3	0.0	463,749	490,007	5.7	1.1	0.4
<b>Floriculture and Nursery.....</b>	<b>103,672</b>	<b>107819</b>	<b>4.0</b>	<b>1.1</b>	<b>1,618,922</b>	<b>1722394</b>	<b>6.4</b>	<b>3.7</b>	<b>6.3</b>
<b>Forages.....</b>	<b>123,909</b>	<b>104,937</b>	<b>-15.3</b>	<b>1.0</b>	<b>336,833</b>	<b>349,688</b>	<b>3.8</b>	<b>0.8</b>	<b>30.0</b>
Forage and Grass Seed.....	26,508	23,955	-9.6	0.2	79,327	75,134	-5.3	0.2	31.9
Hay and Clover.....	97,401	80,982	-16.9	0.8	257,506	274,554	6.6	0.6	29.5
<b>Other Crops.....</b>	<b>22,785</b>	<b>27,366</b>	<b>20.1</b>	<b>0.3</b>	<b>663,817</b>	<b>720,275</b>	<b>8.5</b>	<b>1.6</b>	<b>3.8</b>
Tobacco.....	-	-	...	...	79,269	70,360	-11.2	0.2	0.0
Ginseng.....	0	0	...	...	91,386	73,294	-19.8	0.2	0.0
Maple Products.....	-	-	...	...	165,518	209,673	26.7	0.5	0.0
Forest Products.....	7,612	7,292	-4.2	0.1	125,145	119,887	-4.2	0.3	6.1
Christmas Trees.....	645	742	15.0	0.0	58,669	67,472	15.0	0.1	1.1
Miscellaneous Crops.....	14,528	19,332	33.1	0.2	143,830	179,589	24.9	0.4	10.8
<b>Total Crops.....</b>	<b>3,473,199</b>	<b>4,622,082</b>	<b>33.1</b>	<b>46.2</b>	<b>18,425,255</b>	<b>23,075,675</b>	<b>25.2</b>	<b>50.2</b>	<b>20.0</b>
Livestock and Livestock Products Market Receipts									
Cattle and Calves.....	3,026,908	2,968,137	-1.9	29.7	6,343,135	6,492,475	2.4	14.1	45.7
Hogs.....	431,518	397,381	-7.9	4.0	3,280,010	3,184,517	-2.9	6.9	12.5
Sheep and Lambs.....	20,850	17,354	-16.8	0.2	128,114	123,693	-3.5	0.3	14.0
<b>Total Supply Management.....</b>	<b>651,930</b>	<b>720,204</b>	<b>10.5</b>	<b>7.2</b>	<b>7,883,931</b>	<b>8,332,381</b>	<b>5.7</b>	<b>18.1</b>	<b>8.6</b>
Dairy Products.....	426,818	459,317	7.6	4.6	5,207,151	5,310,510	2.0	11.6	8.6
Hens, Chickens and Turkeys...	180,382	209,768	16.3	2.1	2,068,833	2,376,428	14.9	5.2	8.8
Hatcheries and Eggs.....	44,730	51,119	14.3	0.5	607,947	645,443	6.2	1.4	7.9
Honey.....	36,494	26,515	-27.3	0.3	95,645	88,021	-8.0	0.2	30.1
Furs.....	48	33	-31.3	0.0	90,174	115,491	28.1	0.3	0.0
Miscellaneous Livestock.....	120,279	119,183	-0.9	1.2	397,181	406,412	2.3	0.9	29.3
<b>Total Livestock.....</b>	<b>4,288,029</b>	<b>4,248,810</b>	<b>-0.9</b>	<b>42.5</b>	<b>18,218,193</b>	<b>18,742,990</b>	<b>2.9</b>	<b>40.8</b>	<b>22.7</b>

Note: Interim and final payments received from the Canadian Wheat Board (wheat and barley) are included in the calendar year in which payments were received by producers.

Source: Statistics Canada Cat. No. 21-011, "Farm Cash Receipts - Agriculture Economic Statistics"; and Alberta Agriculture and Rural Development Statistics and Data Development Branch

Table 2 (Cont'd.): Farm Cash Receipts by Type, Alberta and Canada, 2007 and 2008

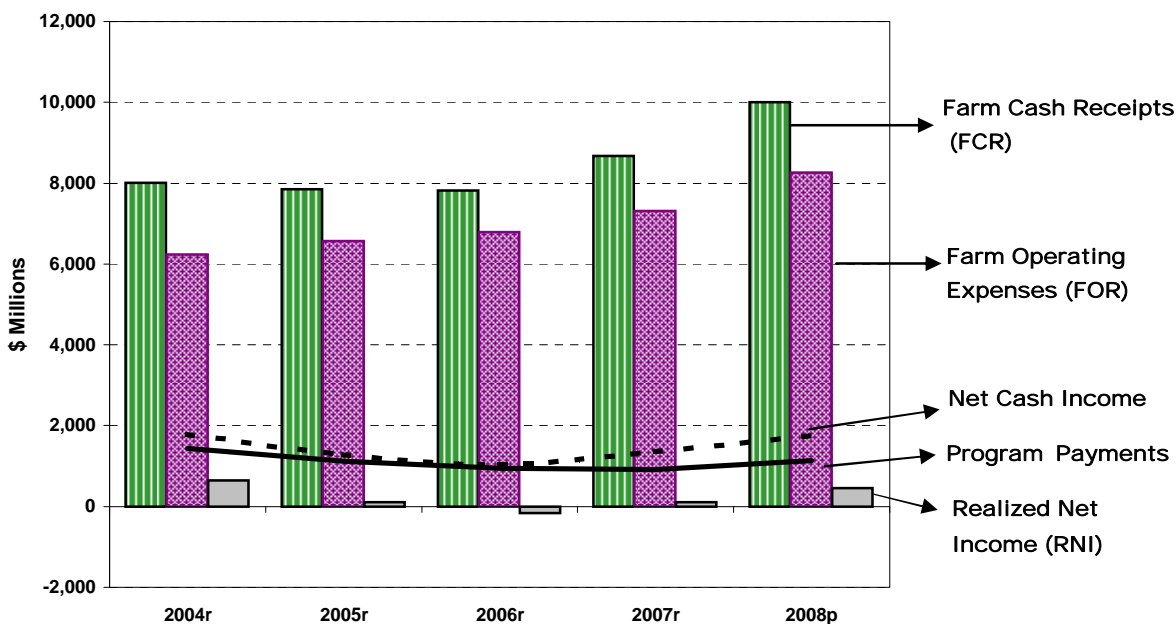
	Alberta				Canada				Alberta as a % of Canada 2008
	2007r	2008p	% Chg.	% of Total 2008	2007r	2008p	% Chg.	% of Total 2008	
	\$'000	\$'000			\$'000	\$'000			
Program Payments									
NISA*	56,651	48,857	-13.8	0.5	272,203	239,746	-11.9	0.5	20.4
Crop Insurance	208,895	262,419	25.6	2.6	570,674	598,788	4.9	1.3	43.8
Private Hail Insurance	54,642	82,230	50.5	0.8	188,443	316,514	68.0	0.7	26.0
CAIS/Growing Forward**	499,742	695,891	39.3	7.0	1,680,085	1,993,176	18.6	4.3	34.9
Prov. Stabilization Payments	0	0	...	...	837,851	643,780	-23.2	1.4	0.0
Other Payments	87,040	48,450	-44.3	0.5	543,651	335,481	-38.3	0.7	14.4
<b>Total Payments</b>	<b>906,970</b>	<b>1,137,847</b>	<b>25.5</b>	<b>11.4</b>	<b>4,092,907</b>	<b>4,127,485</b>	<b>0.8</b>	<b>9.0</b>	<b>27.6</b>
<b>Total Farm Cash Receipts</b>	<b>8,668,198</b>	<b>10,008,739</b>	<b>15.5</b>	<b>100.0</b>	<b>40,736,355</b>	<b>45,946,150</b>	<b>12.8</b>	<b>100.0</b>	<b>21.8</b>

\* Net Income Stabilization Account

\*\* Canadian Agricultural Income Stabilization (include CAIS Inventory Transition Initiative) and Growing Forward (include AgriStability and AgrInvest-Kickstart)

Source: Statistics Canada Cat. No. 21-011, "Farm Cash Receipts - Agriculture Economic Statistics"; and Alberta Agriculture and Rural Development, Statistics and Data Development Branch

Fig. 2 Alberta Farm Income Indicators, 2004-2008



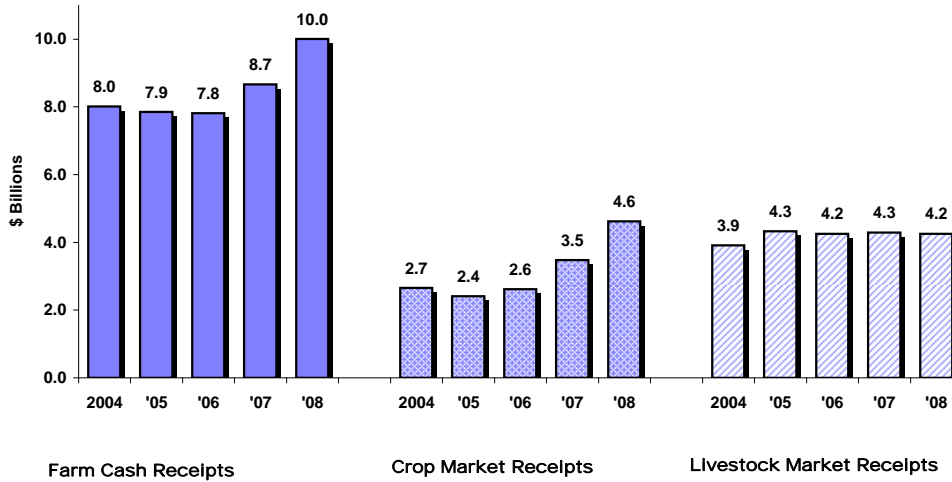
	\$ Millions				
	2004r	2005r	2006r	2007r	2008p
FCR	8,013	7,855	7,811	8,668	10,009
FOR	6,235	6,571	6,786	7,318	8,257
RNI	649	113	-163	109	452
Net Cash Income	1,778	1,284	1,026	1,350	1,752
Program Payments	1,443	1,117	945	907	1,138

Note: Farm operating expenses are after rebates and before depreciation.

Source: Statistics Canada Cat. No. 21-011, "Farm Cash Receipts - Agriculture Economic Statistics"; and Alberta Agriculture and Rural Development, Statistics and Data Development Branch

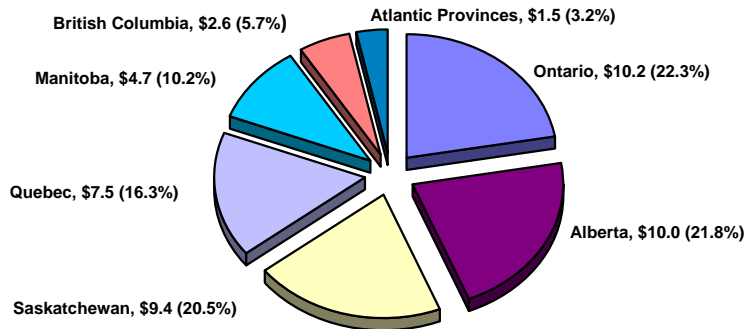


**Fig. 3 Alberta Farm Cash Receipts, Crop Market Receipts and Livestock Market Receipts, 2004-2008**



Source: Statistics Canada Cat. No. 21-011, "Farm Cash Receipts - Agriculture Economic Statistics"; and Alberta Agriculture and Rural Development, Statistics and Data Development Branch

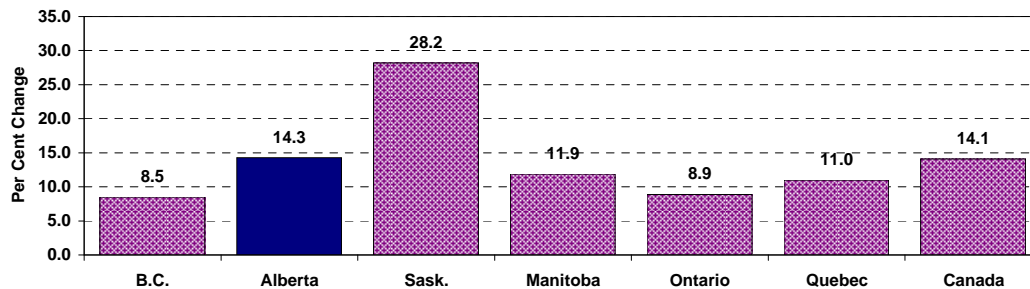
**Fig. 4 Distribution of Canadian Farm Cash Receipts (\$ Billions), 2008**



Total Canadian Farm Cash Receipts (including direct program payments to producers) in 2008 = \$45.9 Billion

Source: Statistics Canada Cat. No. 21-011, "Farm Cash Receipts - Agriculture Economic Statistics"; and Alberta Agriculture and Rural Development, Statistics and Data Development Branch

**Fig. 5 Per Cent Change in Farm Market Receipts (Crops and Livestock), Canada and Selected Provinces, 2008/2007**



Source: Statistics Canada Cat. No. 21-011, "Farm Cash Receipts - Agriculture Economic Statistics"; and Alberta Agriculture and Rural Development, Statistics and Data Development Branch

Table 3: Alberta Farm Cash Receipts by Type, 1979-2008

	Crops			Livestock and Livestock Products			Market Receipts (Includes Crops and Livestock and Livestock Products)			Program Payments			Total Farm Cash Receipts	
	\$'000	% Chg.*	% of Total**	\$'000	% Chg.*	% of Total**	\$'000	% Chg.*	% of Total**	\$'000	% Chg.*	% of Total**	\$'000	% Chg.*
		(1)	(2)		(3) = (1+2)	(4)		(5) = (3+4)						
1979.....	1,150,301	-	40.5	1,586,795	-	55.8	2,737,096	-	96.3	105,865	-	3.7	2,842,961	-
1980.....	1,429,786	24.3	45.5	1,646,450	3.8	52.4	3,076,236	12.4	97.8	68,215	-35.6	2.2	3,144,451	10.6
1981.....	2,049,703	43.4	53.2	1,701,080	3.3	44.2	3,750,783	21.9	97.4	99,163	45.4	2.6	3,849,946	22.4
1982.....	1,870,078	-8.8	49.1	1,680,777	-1.2	44.1	3,550,855	-5.3	93.1	261,238	163.4	6.9	3,812,093	-1.0
1983.....	1,932,142	3.3	51.5	1,678,258	-0.1	44.7	3,610,400	1.7	96.2	140,896	-46.1	3.8	3,751,296	-1.6
1984.....	1,861,683	-3.6	46.7	1,794,500	6.9	45.0	3,656,183	1.3	91.7	331,643	135.4	8.3	3,987,826	6.3
1985.....	1,550,628	-16.7	40.4	1,811,291	0.9	47.2	3,361,919	-8.0	87.6	475,657	43.4	12.4	3,837,576	-3.8
1986.....	1,333,459	-14.0	35.2	1,789,095	-1.2	47.3	3,122,554	-7.1	82.5	661,085	39.0	17.5	3,783,639	-1.4
1987.....	1,313,560	-1.5	32.5	1,919,707	7.3	47.5	3,233,267	3.5	80.1	805,522	21.8	19.9	4,038,789	6.7
1988.....	1,637,745	24.7	36.7	2,081,308	8.4	46.6	3,719,053	15.0	83.2	748,287	-7.1	16.8	4,467,340	10.6
1989.....	1,860,196	13.6	40.4	2,179,241	4.7	47.4	4,039,437	8.6	87.8	560,032	-25.2	12.2	4,599,469	3.0
1990.....	1,641,397	-11.8	38.3	2,323,575	6.6	54.2	3,964,972	-1.8	92.6	318,119	-43.2	7.4	4,283,091	-6.9
1991.....	1,537,300	-6.3	36.3	2,256,090	-2.9	53.3	3,793,390	-4.3	89.6	441,528	38.8	10.4	4,234,918	-1.1
1992.....	1,502,321	-2.3	30.3	2,563,910	13.6	51.7	4,066,231	7.2	82.0	890,028	101.6	18.0	4,956,259	17.0
1993.....	1,562,256	4.0	30.9	2,925,608	14.1	57.8	4,487,864	10.4	88.6	576,163	-35.3	11.4	5,064,027	2.2
1994.....	2,162,536	38.4	38.7	3,036,576	3.8	54.4	5,199,112	15.8	93.2	382,209	-33.7	6.8	5,581,321	10.2
1995.....	2,625,273	21.4	44.0	3,166,414	4.3	53.0	5,791,687	11.4	97.0	177,378	-53.6	3.0	5,969,065	6.9
1996.....	2,974,815	13.3	45.6	3,401,506	7.4	52.1	6,376,321	10.1	97.7	151,886	-14.4	2.3	6,528,207	9.4
1997r.....	2,637,771	-11.3	40.8	3,609,146	6.1	55.8	6,246,917	-2.0	96.6	217,729	43.4	3.4	6,464,646	-1.0
1998r.....	2,469,562	-6.4	38.5	3,713,462	2.9	57.9	6,183,024	-1.0	96.3	235,094	8.0	3.7	6,418,118	-0.7
1999r.....	2,341,324	-5.2	35.9	3,971,255	6.9	60.8	6,312,579	2.1	96.7	218,247	-7.2	3.3	6,530,826	1.8
2000r.....	2,363,588	1.0	31.2	4,512,132	13.6	59.5	6,875,720	8.9	90.7	707,568	224.2	9.3	7,583,288	16.1
2001r.....	2,304,066	-2.5	27.5	5,244,924	16.2	62.7	7,548,990	9.8	90.2	819,427	15.8	9.8	8,368,417	10.4
2002r.....	2,214,838	-3.9	26.6	5,062,060	-3.5	60.9	7,276,898	-3.6	87.5	1,038,911	26.8	12.5	8,315,809	-0.6
2003r.....	2,027,056	-8.5	28.5	3,706,561	-26.8	52.2	5,733,617	-21.2	80.7	1,368,011	31.7	19.3	7,101,628	-14.6
2004r.....	2,656,410	31.0	33.1	3,914,271	5.6	48.8	6,570,681	14.6	82.0	1,442,688	5.5	18.0	8,013,369	12.8
2005r.....	2,412,682	-9.2	30.7	4,325,420	10.5	55.1	6,738,102	2.5	85.8	1,116,969	-22.6	14.2	7,855,071	-2.0
2006r.....	2,616,606	8.5	33.5	4,249,481	-1.8	54.4	6,866,087	1.9	87.9	945,114	-15.4	12.1	7,811,201	-0.6
2007r.....	3,473,199	32.7	40.1	4,288,029	0.9	49.5	7,761,228	13.0	89.5	906,970	-4.0	10.5	8,668,198	11.0
2008p.....	4,622,082	33.1	46.2	4,248,810	-0.9	42.5	8,870,892	14.3	88.6	1,137,847	25.5	11.4	10,008,739	15.5

\* Per cent change from previous year

\*\* Per cent of total farm cash receipts

Source: Statistics Canada Cat. No. 21-011, "Farm Cash Receipts - Agriculture Economic Statistics"; and Alberta Agriculture and Rural Development, Statistics and Data Development Branch

Table 4: Alberta Farm Cash Receipts From the Sale of Crops, 1979-2008

	Crop								
	Market Cash Receipts (1)	Wheat	Oats	Barley	Rye	Flaxseed	Canola	Sugar Beets	Dry Peas
	\$'000								
1979.....	1,150,301	446,763	14,342	242,749	12,545	17,837	329,141	21,163	1,081
1980.....	1,429,786	656,240	27,019	311,136	30,485	29,118	305,197	44,821	1,576
1981.....	2,049,703	1,150,839	24,937	463,893	29,897	15,951	278,732	38,284	1,785
1982.....	1,870,078	957,543	24,409	460,568	19,616	14,332	246,140	18,729	3,332
1983.....	1,932,142	1,000,575	23,111	424,508	15,988	16,357	330,253	27,006	3,160
1984.....	1,861,683	1,002,511	24,998	303,101	13,951	7,040	399,484	17,820	2,665
1985.....	1,550,628	698,803	17,842	269,566	4,737	7,279	342,626	3,337	2,039
1986.....	1,333,459	517,250	17,052	318,687	4,645	5,534	267,031	9,001	2,382
1987.....	1,313,560	559,646	19,466	232,205	4,743	6,012	313,316	12,680	3,944
1988.....	1,637,745	686,440	65,551	256,552	7,720	7,217	437,847	19,380	9,595
1989.....	1,860,196	690,843	89,531	376,767	5,921	6,448	419,740	23,342	12,476
1990.....	1,641,397	713,863	37,577	272,197	5,442	8,349	336,232	26,586	10,818
1991.....	1,537,300	685,230	22,770	225,109	4,688	5,128	320,224	20,877	16,933
1992.....	1,502,321	604,720	39,803	192,114	4,628	5,912	388,758	17,277	21,986
1993.....	1,562,256	593,161	50,206	189,381	5,087	9,312	414,540	21,965	29,910
1994.....	2,162,536	840,653	45,835	265,713	6,318	9,186	773,332	26,627	50,332
1995.....	2,625,273	1,064,743	70,856	332,953	7,305	8,933	709,701	32,401	60,518
1996.....	2,974,815	1,241,345	88,387	470,725	7,330	9,094	794,467	27,008	59,406
1997r.....	2,637,771	1,012,666	52,002	324,076	6,691	7,481	755,087	30,062	59,277
1998r.....	2,469,562	863,418	34,220	198,273	4,182	7,832	881,378	38,402	59,516
1999r.....	2,341,324	975,506	22,980	174,266	3,632	5,118	608,212	29,651	57,229
2000r.....	2,363,588	959,622	20,708	220,607	2,978	5,616	556,266	32,899	53,893
2001r.....	2,304,066	938,302	31,469	213,676	3,520	4,379	584,239	19,333	70,349
2002r.....	2,214,838	817,337	42,195	159,809	2,718	4,897	530,186	20,072	48,053
2003r.....	2,027,056	652,550	20,742	156,647	1,519	3,953	624,433	22,732	58,140
2004r.....	2,656,410	964,469	23,715	209,184	9,748	7,695	785,822	30,921	78,434
2005r.....	2,412,682	800,081	39,938	140,389	1,772	4,277	742,609	32,140	64,133
2006r.....	2,616,606	815,797	30,535	143,353	2,345	3,297	990,703	38,180	72,299
2007r.....	3,473,199	1,256,042	38,799	319,139	6,939	7,318	1,208,789	34,726	112,984
2008p.....	4,622,082	1,775,229	29,710	331,031	5,225	8,719	1,854,718	23,543	122,114

(1) Includes market receipts only (does not include program payments).

Source: Statistics Canada Cat. No. 21-011, "Farm Cash Receipts - Agriculture Economic Statistics"; and Alberta Agriculture and Rural Development, Statistics and Data Development Branch

Table 4 (Cont'd.): Alberta Farm Cash Receipts From the Sale of Crops,  
1979-2008

	Mustard Seed	Sunflower Seed	Lentils	Forage and Grass Seed	Hay and Clover	Potatoes	Total Vegetables	Floriculture and Nursery (2)	Other Crops (3)
\$'000									
1979.....	2,424	0	0	13,000	0	14,970	11,072	19,762	3,452
1980.....	5,235	0	0	15,445	0	17,939	14,168	23,888	-52,481
1981.....	6,885	0	0	16,162	3,228	22,341	15,732	23,106	-42,069
1982.....	6,630	0	0	8,225	2,900	21,386	15,168	25,724	45,376
1983.....	7,246	0	0	10,322	1,257	21,792	19,556	24,777	6,234
1984.....	5,007	0	0	11,822	6,353	25,103	23,552	27,470	-9,194
1985.....	4,488	0	0	14,182	11,293	27,175	25,943	31,840	89,478
1986.....	7,650	0	1,954	30,486	12,345	39,156	29,301	32,044	38,941
1987.....	6,151	1,045	1,641	18,269	8,031	34,324	30,846	43,729	17,512
1988.....	5,649	776	1,682	23,838	12,390	41,471	35,018	54,432	-27,813
1989.....	7,431	701	800	14,400	18,709	43,135	37,294	53,639	59,019
1990.....	6,622	463	852	15,709	16,802	40,141	45,412	62,984	41,348
1991.....	6,181	603	1,259	13,497	18,473	39,103	36,254	56,139	64,832
1992.....	6,763	796	2,619	23,186	26,409	38,892	38,964	66,295	23,199
1993.....	6,180	1,089	2,270	24,959	42,505	52,960	45,300	61,511	11,920
1994.....	8,225	943	3,362	22,256	47,372	44,981	x	58,129	-40,728
1995.....	14,227	1,764	6,553	18,716	65,316	57,362	51,534	61,188	61,203
1996.....	16,628	1,499	4,620	30,407	60,338	61,515	52,713	54,713	-5,380
1997r.....	14,897	1,065	2,022	29,860	82,867	52,140	56,676	68,349	82,553
1998r.....	15,022	1,277	2,253	30,757	85,679	63,862	60,365	54,515	68,611
1999r.....	12,959	1,102	3,469	40,601	95,346	74,892	53,706	66,136	116,519
2000r.....	6,592	1,456	3,406	42,091	123,065	113,095	63,537	90,203	67,554
2001r.....	4,451	1,633	1,875	19,804	145,714	107,144	65,364	99,307	-6,493
2002r.....	7,959	1,597	900	22,999	151,870	146,783	61,873	103,127	92,463
2003r.....	11,582	1,537	1,578	21,381	122,792	133,474	68,802	95,155	30,039
2004r.....	14,803	788	2,232	17,532	114,801	164,615	77,982	97,663	56,006
2005r.....	12,871	514	2,718	28,298	94,238	138,406	80,810	109,866	119,622
2006r.....	9,052	0	1,875	38,238	91,617	152,116	80,789	124,958	21,452
2007r.....	21,387	0	589	26,508	97,401	139,201	84,263	128,672	-9,558
2008p.....	24,302	0	0	23,955	80,982	154,802	85,123	133,819	-31,190

(2) Includes sod as of 1986.

(3) Other crops include strawberries, other berries and grapes, corn, forest products and miscellaneous crops plus net deferrals.

Source: Statistics Canada Cat. No. 21-011, "Farm Cash Receipts - Agriculture Economic Statistics"; and Alberta Agriculture and Rural Development, Statistics and Data Development Branch

Table 5: Alberta Farm Cash Receipts From the Sale of Livestock, 1979-2008

	Livestock Market Cash Receipts (1)	Cattle and Calves	Hogs	Sheep and Lambs	Supply Management				Other Livestock and Products	
					Total Supply Mgmt.	Dairy Products	Chickens, Hens and Turkeys	Eggs and Hatcheries		Honey
\$'000										
1979.....	1,586,795	1,178,929	162,123	3,225	215,706	123,108	61,227	31,371	13,027	13,785
1980.....	1,646,450	1,199,560	166,337	4,142	249,112	148,282	64,635	36,195	13,483	13,816
1981.....	1,701,080	1,180,059	189,624	3,962	295,400	173,992	78,299	43,109	15,161	16,874
1982.....	1,680,777	1,106,348	222,491	4,806	317,498	196,934	81,012	39,552	13,074	16,560
1983.....	1,678,258	1,125,035	202,241	5,231	315,693	196,769	77,662	41,262	13,742	16,316
1984.....	1,794,500	1,163,579	244,127	7,708	347,870	213,969	91,868	42,033	14,353	16,863
1985.....	1,811,291	1,181,405	248,331	6,800	345,606	215,637	88,570	41,399	11,906	17,243
1986.....	1,789,095	1,116,853	279,377	7,854	349,503	223,658	83,754	42,091	12,982	22,526
1987.....	1,919,707	1,224,926	287,590	9,247	354,171	221,104	92,143	40,924	12,502	31,271
1988.....	2,081,308	1,400,573	259,397	7,978	368,728	238,186	87,729	42,813	10,139	34,493
1989.....	2,179,241	1,474,780	265,031	8,695	386,966	246,982	96,267	43,717	9,001	34,768
1990.....	2,323,575	1,573,696	298,895	8,081	397,210	251,207	104,035	41,968	11,666	34,027
1991.....	2,256,090	1,537,410	276,091	7,386	393,359	250,093	99,609	43,657	11,666	30,178
1992.....	2,563,910	1,815,960	276,903	13,245	392,086	248,537	97,595	45,954	13,001	52,715
1993.....	2,925,608	2,109,871	322,885	14,513	395,852	244,663	103,708	47,481	13,352	69,135
1994.....	3,036,576	2,191,208	315,333	13,100	421,021	257,843	112,680	50,498	15,609	80,305
1995.....	3,166,414	2,221,065	381,812	14,394	430,846	265,643	112,404	52,799	19,689	98,608
1996.....	3,401,506	2,347,628	444,585	17,145	471,041	290,753	125,115	55,173	19,693	101,414
1997r....	3,609,146	2,541,552	438,374	15,297	484,647	316,826	129,373	38,448	22,857	106,419
1998r....	3,713,462	2,763,190	309,938	12,763	485,205	311,460	136,058	37,687	30,734	111,632
1999r....	3,971,255	2,968,144	344,341	13,385	498,662	327,063	133,836	37,763	25,832	120,891
2000r....	4,512,132	3,340,203	496,616	16,080	495,745	318,454	138,249	39,042	19,911	143,577
2001r....	5,244,924	3,918,165	572,119	14,050	547,600	348,378	156,730	42,492	24,312	168,678
2002r....	5,062,060	3,845,765	437,343	19,118	555,215	366,827	143,638	44,750	45,679	158,940
2003r....	3,706,561	2,512,011	427,552	15,799	579,715	384,704	149,290	45,721	57,450	114,034
2004r....	3,914,271	2,571,540	564,882	12,092	595,024	382,979	161,594	50,451	53,075	117,658
2005r....	4,325,420	3,022,492	510,103	16,524	610,184	398,675	165,924	45,585	39,229	126,888
2006r....	4,249,481	3,019,671	459,869	20,193	587,654	382,095	161,821	43,738	40,247	121,847
2007r....	4,288,029	3,026,908	431,518	20,850	651,930	426,818	180,382	44,730	36,494	120,329
2008p...	4,248,810	2,968,137	397,381	17,354	720,204	459,317	209,768	51,119	26,515	119,219

(1) Includes market receipts only (does not include program payments).

Source: Statistics Canada Cat. No. 21-011, "Farm Cash Receipts - Agriculture Economic Statistics"; and Alberta Agriculture and Rural Development, Statistics and Data Development Branch

Table 6: Alberta Farm Operating Expenses and Depreciation, 1979-2008

	Property Taxes	Cash and Share Rent	Cash Wages, Room and Board	Net Interest Payments	Interest Rebates	Net Heating Fuel	Heating Fuel Rebates	Machine Repairs and Other
\$'000								
1979.....	40,756	123,530	105,486	307,325	0	24,501	0	177,825
1980.....	47,931	165,064	129,336	362,733	0	29,570	0	217,929
1981.....	56,118	169,584	164,534	545,170	12,543	28,138	280	263,454
1982.....	65,646	169,337	202,897	509,637	22,775	33,576	680	260,357
1983.....	62,915	182,615	214,723	391,873	56,121	32,237	2,328	279,585
1984.....	65,623	197,852	224,373	426,780	48,933	37,579	3,045	268,338
1985.....	66,630	183,014	255,028	439,334	38,293	41,480	3,668	290,743
1986.....	68,774	182,453	270,153	420,316	24,145	37,632	5,412	331,884
1987.....	70,149	154,113	297,263	437,030	16,260	28,753	2,743	312,081
1988.....	73,023	178,018	279,957	395,963	12,532	23,547	3,975	312,724
1989.....	77,731	193,581	299,212	389,571	10,322	26,940	2,813	349,523
1990.....	83,221	193,583	311,033	397,129	9,954	29,520	2,294	362,680
1991.....	86,581	191,491	320,431	486,373	9,378	31,561	2,600	362,209
1992.....	89,763	200,742	330,312	431,422	9,136	32,044	300	367,851
1993.....	92,579	223,028	350,243	421,382	8,907	37,215	0	388,268
1994.....	97,347	230,911	385,411	451,622	9,308	43,312	0	419,988
1995.....	101,677	245,485	397,238	484,555	7,150	40,956	0	424,188
1996.....	101,840	273,794	419,792	461,133	8,108	44,167	0	434,102
1997r.....	104,985	276,068	443,858	433,811	7,370	42,956	0	428,979
1998r.....	106,035	280,876	451,559	488,807	4,956	41,254	0	423,670
1999r.....	104,975	289,707	477,408	528,940	4,010	49,524	0	443,786
2000r.....	104,965	293,230	488,071	570,609	6,109	58,734	2,700	456,002
2001r.....	100,254	306,339	510,367	564,618	5,588	63,023	13,000	469,118
2002r.....	95,300	317,700	528,599	515,389	5,914	55,635	199	482,612
2003r.....	95,130	329,197	521,161	514,223	5,802	75,386	2,133	481,550
2004r.....	95,330	325,664	514,865	496,236	5,591	74,678	3,702	488,187
2005r.....	94,337	329,745	535,821	494,448	5,283	84,027	3,504	502,229
2006r.....	93,709	338,322	551,896	576,560	4,981	74,688	6,278	502,731
2007r.....	97,176	374,175	568,453	623,537	3,830	77,591	3,132	537,922
2008p.....	103,007	451,325	599,149	611,990	2,859	93,168	3,700	561,590

Source: Statistics Canada Cat. No. 21-012, "Farm Operating Expenses and Depreciation Charges - Agriculture Economic Statistics"; and Alberta Agriculture and Rural Development, Statistics and Data Development Branch

Table 6 (Cont'd.): Alberta Farm Operating Expenses and Depreciation,  
1979-2008

	Net Machinery Fuel	Machinery Fuel Rebates	Net Fertilizer and Lime Purchases	Fertilizer and Lime Rebates	(1) Other Net Crop Expenses	Net Commercial Feed Purchases	Commercial Feed Rebates	Livestock and Poultry Purchases
\$'000								
1979.....	151,236	6,993	179,205	0	128,261	187,214	0	163,982
1980.....	182,760	5,439	202,906	0	147,582	224,392	0	155,696
1981.....	259,996	4,631	280,275	0	185,805	274,901	0	136,933
1982.....	276,086	5,191	288,387	0	209,135	271,746	0	133,906
1983.....	294,856	4,423	315,028	0	251,396	244,177	0	127,903
1984.....	299,678	4,145	336,070	0	278,945	326,086	0	158,047
1985.....	303,448	9,330	319,018	16,525	292,574	317,329	13,238	138,470
1986.....	214,135	16,166	291,948	19,200	314,327	254,424	74,800	177,158
1987.....	190,802	7,836	258,167	16,420	285,913	201,336	71,530	309,086
1988.....	197,379	7,130	266,985	16,146	300,280	286,467	47,262	306,019
1989.....	210,055	4,758	290,624	18,143	349,000	351,437	47,614	343,527
1990.....	275,213	3,822	274,108	19,666	314,566	304,741	38,752	311,343
1991.....	260,285	3,037	262,887	20,575	310,371	284,925	33,358	310,081
1992.....	244,926	283	302,421	6,229	299,709	303,025	43,658	360,716
1993.....	272,427	0	331,613	0	339,555	343,668	43,254	505,337
1994.....	307,670	0	404,855	0	399,072	448,265	35,452	485,562
1995.....	323,419	0	466,420	0	446,862	614,783	8,750	421,404
1996.....	345,783	0	511,742	0	496,058	723,615	0	359,280
1997r.....	352,695	0	474,698	0	536,574	820,146	0	534,495
1998r.....	309,773	0	482,946	0	552,029	831,461	0	646,744
1999r.....	315,717	0	476,887	0	570,248	778,338	0	959,764
2000r.....	384,869	0	513,237	0	555,806	858,881	0	1,088,588
2001r.....	381,717	0	556,862	0	582,673	1,007,575	0	1,048,436
2002r.....	336,526	0	546,838	0	613,849	1,300,213	0	630,026
2003r.....	360,741	0	590,585	0	708,377	1,117,687	0	629,363
2004r.....	390,313	0	602,397	0	710,117	960,783	0	664,532
2005r.....	488,784	0	613,351	0	746,399	897,809	0	852,407
2006r.....	518,111	0	656,286	0	766,166	915,765	0	798,517
2007r.....	538,835	0	787,543	0	822,225	1,158,443	0	684,866
2008p.....	672,466	0	1,165,563	0	956,701	1,315,991	0	656,415

(1) Other Net Crop Expenses include pesticides, commercial seed, irrigation, crop and hail insurance premiums and twine/wire/containers.

Source: Statistics Canada Cat. No. 21-012, "Farm Operating Expenses and Depreciation Charges - Agriculture Economic Statistics"; and Alberta Agriculture and Rural Development, Statistics and Data Development Branch

Table 6 (Cont'd.): Alberta Farm Operating Expenses and Depreciation,  
1979-2008

	Repairs to Buildings and Fences	Electricity and Telephone	(2) Misc.	Operating Expenses After Rebates	Depreciation on Buildings	Depreciation on Machinery	Total Depreciation	Total Expenses After Rebates Including Depreciation
\$'000								
1979.....	54,368	44,324	128,657	1,816,670	94,329	412,701	507,030	2,323,700
1980.....	58,424	50,540	148,501	2,123,364	118,099	481,612	599,711	2,723,075
1981.....	71,736	54,648	193,911	2,685,203	128,101	543,574	671,675	3,356,878
1982.....	71,484	58,835	203,860	2,754,889	128,789	592,323	721,112	3,476,001
1983.....	64,274	62,897	209,724	2,734,203	121,051	604,749	725,800	3,460,003
1984.....	64,730	71,555	243,806	2,999,462	111,688	597,768	709,456	3,708,918
1985.....	62,325	81,633	237,258	3,028,284	104,671	600,851	705,522	3,733,806
1986.....	77,225	83,544	257,287	2,981,260	95,252	611,157	706,409	3,687,669
1987.....	98,813	83,064	273,587	3,000,157	92,528	593,927	686,455	3,686,612
1988.....	97,155	86,472	303,969	3,107,958	91,662	594,835	686,497	3,794,455
1989.....	93,286	92,178	354,593	3,421,258	102,907	613,341	716,248	4,137,506
1990.....	101,047	97,161	351,845	3,407,190	110,192	635,196	745,388	4,152,578
1991.....	102,381	103,834	427,886	3,541,296	107,711	618,859	726,570	4,267,866
1992.....	105,285	110,314	467,057	3,645,587	103,490	614,152	717,642	4,363,229
1993.....	115,976	119,670	472,230	4,013,191	103,495	631,920	735,415	4,748,606
1994.....	127,565	128,366	414,159	4,344,105	113,442	672,385	785,827	5,129,932
1995.....	124,698	140,568	416,677	4,648,930	130,539	719,751	850,290	5,499,220
1996.....	136,269	148,520	419,449	4,875,544	143,410	780,346	923,756	5,799,300
1997r.....	137,813	153,901	385,953	5,126,932	160,864	827,614	988,478	6,115,410
1998r.....	134,486	146,933	379,717	5,276,290	172,513	863,876	1,036,389	6,312,679
1999r.....	136,874	151,036	434,472	5,717,676	179,748	893,053	1,072,801	6,790,477
2000r.....	143,403	161,120	470,866	6,148,381	189,743	895,230	1,084,973	7,233,354
2001r.....	146,742	176,872	543,956	6,458,552	199,448	922,739	1,122,187	7,580,739
2002r.....	139,953	206,182	552,304	6,321,126	205,405	906,122	1,111,527	7,432,653
2003r.....	141,821	215,537	543,109	6,323,867	209,345	935,091	1,144,436	7,468,303
2004r.....	143,714	205,897	562,323	6,235,036	215,690	924,891	1,140,581	7,375,617
2005r.....	148,488	206,446	577,073	6,571,364	222,029	963,410	1,185,439	7,756,803
2006r.....	148,191	227,478	617,209	6,785,629	226,870	972,491	1,199,361	7,984,990
2007r.....	155,600	250,689	640,831	7,317,886	253,306	996,445	1,249,751	8,567,637
2008p.....	152,488	260,027	656,632	8,256,512	289,265	1,019,246	1,308,511	9,565,023

(2) Miscellaneous expenses include business insurance, custom work, stabilization premiums, artificial insemination and veterinary fees, legal and accounting fees and other expenses.

Source: Statistics Canada Cat. No. 21-012, "Farm Operating Expenses and Depreciation Charges - Agriculture Economic Statistics"; and Alberta Agriculture and Rural Development, Statistics and Data Development Branch



Table 7: Alberta Net Farm Income, 1979-2008

	<b>1</b>	<b>2</b>	<b>3</b>	<b>4</b>	<b>5</b>	<b>6</b>	<b>7</b>	<b>8</b>
	<b>Total</b>	<b>Operating</b>	<b>(1-2)</b>	<b>Income</b>	<b>Depreciation</b>	<b>(3+4-5)</b>	<b>Value of</b>	<b>Total</b>
	<b>Farm Cash</b>	<b>Expenses</b>	<b>Net</b>	<b>in</b>	<b>Charges</b>	<b>Realized</b>	<b>Inventory</b>	<b>Net Farm</b>
	<b>Receipts</b>	<b>After</b>	<b>Cash</b>	<b>Kind</b>		<b>Net</b>	<b>Change</b>	<b>Income</b>
		<b>Rebates</b>	<b>Income</b>			<b>Income</b>		
	\$'000							
1979.....	2,842,961	1,816,670	1,026,291	27,762	507,030	547,023	63,486	610,509
1980.....	3,144,451	2,123,364	1,021,087	29,850	599,711	451,226	153,938	605,164
1981.....	3,849,946	2,685,203	1,164,743	23,404	671,675	516,472	113,451	629,923
1982.....	3,812,093	2,754,889	1,057,204	21,124	721,112	357,216	-54,749	302,467
1983.....	3,751,296	2,734,203	1,017,093	20,090	725,800	311,383	-190,906	120,477
1984.....	3,987,826	2,999,462	988,364	19,823	709,456	298,731	-329,240	-30,509
1985.....	3,837,576	3,028,284	809,292	18,896	705,522	122,666	-20,292	102,374
1986.....	3,783,639	2,981,260	802,379	15,901	706,409	111,871	471,085	582,956
1987.....	4,038,789	3,000,157	1,038,632	13,685	686,455	365,862	23,555	389,417
1988.....	4,467,340	3,107,958	1,359,382	13,229	686,497	686,114	85,899	772,013
1989.....	4,599,469	3,421,258	1,178,211	13,130	716,248	475,093	99,799	574,892
1990.....	4,283,091	3,407,190	875,901	13,139	745,388	143,652	202,391	346,043
1991.....	4,234,918	3,541,296	693,622	12,326	726,570	-20,622	164,210	143,588
1992.....	4,956,259	3,645,587	1,310,672	12,830	717,642	605,860	-160,060	445,800
1993.....	5,064,027	4,013,191	1,050,836	14,955	735,415	330,376	601,179	931,555
1994.....	5,581,321	4,344,105	1,237,216	15,549	785,827	466,938	103,018	569,956
1995.....	5,969,065	4,648,930	1,320,135	15,153	850,290	484,998	396,563	881,561
1996.....	6,528,207	4,875,544	1,652,663	16,518	923,756	745,425	13,800	759,225
1997r.....	6,464,646	5,126,932	1,337,714	9,305	988,478	358,541	-61,562	296,979
1998r.....	6,418,118	5,276,290	1,141,828	8,631	1,036,389	114,070	190,282	304,352
1999r.....	6,530,826	5,717,676	813,150	8,402	1,072,801	-251,249	491,929	240,680
2000r.....	7,583,288	6,148,381	1,434,907	9,048	1,084,973	358,982	29,821	388,803
2001r.....	8,368,417	6,458,552	1,909,865	8,977	1,122,187	796,655	-258,676	537,979
2002r.....	8,315,809	6,321,126	1,994,683	8,386	1,111,527	891,542	-1,066,029	-174,487
2003r.....	7,101,628	6,323,867	777,761	8,302	1,144,436	-358,373	941,157	582,784
2004r.....	8,013,369	6,235,036	1,778,333	10,880	1,140,581	648,632	507,193	1,155,825
2005r.....	7,855,071	6,571,364	1,283,707	14,259	1,185,439	112,527	296,548	409,075
2006r.....	7,811,201	6,785,629	1,025,572	10,907	1,199,361	-162,882	-301,148	-464,030
2007r.....	8,668,198	7,317,886	1,350,312	7,977	1,249,751	108,538	-302,967	-194,429
2008p.....	10,008,739	8,256,512	1,752,227	7,849	1,308,511	451,565	747,405	1,198,970

Source: Statistics Canada Cat. No. 21-010, "Net Farm Income - Agriculture Economic Statistics"; and Alberta Agriculture and Rural Development, Statistics and Data Development Branch

Table 8: Value of Alberta Farm Capital and Value Per Acre of Farm Land and Buildings, at July 1, 1979-2008

	Livestock and Poultry	Land and Buildings	Machinery and Equipment	Total Farm Capital	Value of Farm Land and Buildings
	\$'000				\$/Acre
1979.....	2,478,357	21,172,490	3,297,240	26,948,087	424
1980.....	2,551,751	27,137,589	3,842,797	33,532,137	544
1981.....	2,531,870	29,961,159	4,362,215	36,855,244	600
1982.....	2,558,146	29,682,516	4,846,335	37,086,997	592
1983.....	2,560,398	27,368,393	5,046,965	34,975,756	543
1984.....	2,589,885	24,966,230	5,079,298	32,635,413	493
1985.....	2,333,295	23,019,800	5,208,597	30,561,692	453
1986.....	2,375,837	20,773,520	5,382,284	28,531,641	407
1987.....	2,796,853	19,744,120	5,409,712	27,950,685	386
1988.....	3,048,758	19,159,142	5,523,052	27,730,952	374
1989.....	3,236,197	21,091,994	5,790,087	30,118,278	411
1990.....	3,351,948	22,169,169	6,124,730	31,645,847	432
1991.....	3,499,557	21,291,475	6,079,438	30,870,470	414
1992.....	3,394,565	20,798,399	5,982,777	30,175,741	405
1993.....	4,087,167	21,147,301	6,209,895	31,444,363	413
1994.....	4,637,627	23,017,810	6,640,116	34,295,553	450
1995.....	4,191,096	26,302,921	7,109,304	37,603,321	515
1996.....	3,792,358	28,696,985	7,458,676	39,948,019	553
1997r.....	4,581,994	31,761,777	7,767,975	44,111,746	611
1998r.....	4,766,483	34,217,431	8,258,258	47,242,172	658
1999r.....	5,235,172	35,894,547	8,545,928	49,675,647	690
2000r.....	6,294,818	37,520,833	8,588,902	52,404,553	721
2001.....	6,872,033	38,872,514	8,684,163	54,428,710	747
2002.....	5,938,611	41,970,588	8,902,738	56,811,937	806
2003.....	4,745,685	44,950,634	9,072,927	58,769,246	863
2004r.....	3,791,175	48,505,355	9,219,494	61,516,024	931
2005r.....	4,761,815	52,739,434	9,467,913	66,969,162	1,012
2006r.....	5,333,441	57,101,345	9,680,138	72,114,924	1,095
2007r.....	5,276,887	63,755,086	9,821,621	78,853,594	1,221
2008p.....	4,397,438	72,805,885	10,111,301	87,314,624	1,392

Note: The data in this table were last revised in November, 2008 for 1997 to 2006, and May, 2009 for 2007 and 2008.

(1) Value per acre of farm land and buildings, at July 1, reflects the value of all farm land, including pasture and unimproved land, plus the value of farm houses, buildings, and other structures.

Source: Statistics Canada Cat. No. 21-013, "Value of Farm Capital - Agriculture Economic Statistics"; and Alberta Agriculture and Rural Development, Statistics and Data Development Branch

Table 9: Alberta Farm Debt Outstanding by Lender, at December 31, 1979-2008

	Chartered Banks	(1) Federal Gov't Agencies	(2) Provincial Gov't Agencies	Credit Unions	Other (3)	Advance Payment Programs	Total Debt at Year End
	\$'000						
1979.....	1,490,000	603,692	406,967	204,830	355,300	6,633	3,067,422
1980.....	1,597,000	631,488	592,841	239,031	368,420	13,352	3,442,132
1981.....	1,728,000	676,816	863,637	247,693	547,281	41,712	4,105,139
1982.....	1,831,000	714,317	1,126,451	278,568	604,132	49,663	4,604,131
1983.....	1,982,000	850,768	1,280,262	196,894	691,725	39,253	5,040,902
1984.....	2,009,000	854,663	1,443,244	200,747	647,828	19,556	5,175,038
1985.....	2,085,000	835,701	1,568,392	200,747	616,483	46,964	5,353,287
1986.....	2,281,000	754,509	1,692,152	187,000	540,237	92,748	5,547,646
1987.....	2,353,990	663,140	1,698,125	181,000	513,730	81,298	5,491,283
1988.....	2,385,487	568,601	1,735,406	146,000	547,821	85,954	5,469,269
1989.....	2,611,875	487,126	1,899,786	176,000	547,821	21,397	5,744,005
1990.....	2,669,062	428,274	1,930,615	216,750	615,308	318,985	6,178,994
1991.....	2,868,250	409,507	1,994,467	222,000	615,308	291,912	6,401,444
1992.....	2,787,663	386,705	1,971,709	228,500	594,548	257,810	6,226,935
1993.....	2,957,253	370,798	1,974,000	236,000	576,623	244,935	6,359,609
1994.....	3,078,729	384,142	1,963,940	249,750	578,059	144,294	6,398,914
1995.....	3,177,512	449,450	1,950,592	278,750	630,834	145,580	6,632,718
1996.....	3,247,877	550,539	1,810,124	311,500	798,809	175,356	6,894,205
1997r.....	3,673,817	702,042	1,741,163	344,250	965,123	113,846	7,540,241
1998r.....	4,137,918	806,589	1,753,953	389,500	969,355	116,561	8,173,876
1999r.....	4,456,500	927,045	1,793,995	411,257	985,014	118,617	8,692,428
2000r.....	4,613,459	951,550	1,976,111	458,031	1,030,569	132,329	9,162,049
2001r.....	4,675,587	1,076,162	2,114,858	508,550	1,076,122	109,799	9,561,078
2002r.....	4,775,517	1,182,368	2,171,862	554,094	1,181,570	50,904	9,916,315
2003r.....	5,046,257	1,366,847	2,333,345	604,241	1,155,822	106,754	10,613,266
2004r.....	5,029,303	1,610,617	2,247,985	650,994	1,256,157	85,938	10,880,994
2005r.....	5,029,358	1,895,609	2,253,519	673,517	999,023	109,656	10,960,682
2006r.....	5,080,560	2,168,670	2,303,300	711,918	1,144,640	138,825	11,547,913
2007r.....	5,176,423	2,460,342	2,333,473	724,204	974,828	129,774	11,799,044
2008p.....	5,501,601	2,866,816	2,390,460	729,414	964,042	219,358	12,671,691

(1) Includes loans made through the Farm Credit Corporation, Business Development Bank of Canada and under the Veterans Land Act.

(2) Includes loans made through Alberta Treasury Branches and the Alberta Agriculture Financial Services Corporation.

(3) Includes insurance, trust companies, supply companies, private individuals and others.

Source: Statistics Canada Cat. No. 21-014, "Farm Debt Outstanding - Agriculture Economic Statistics"; and Alberta Agriculture and Rural Development, Statistics and Data Development Branch