

# Agri-Food Statistics Update



Issue No. 98

December 14, 2005

Collected from a variety of sources, the *Statistics and Data Development Unit* monitors statistical indicators of agri-food activity for Alberta. The **Agri-Food Statistics Update** is designed to provide users with commentary on current issues, trends and new developments related to agriculture and the food and beverage processing industries. Up-to-date statistics are supplemented with informative charts and diagrams. To gauge Alberta's performance, comparative data and information are often available for Canada and the provinces.

Please refer to the following website for a listing of Agri-Food Statistics Update releases:

[http://www1.agric.gov.ab.ca/\\$department/deptdocs.nsf/all/sdd5270](http://www1.agric.gov.ab.ca/$department/deptdocs.nsf/all/sdd5270)

**Note to Users:** The contents of this document may not be used or reproduced without properly accrediting the Statistics and Data Development Unit, Economics and Competitiveness Division, AAFRD.

**Alberta**  
Agriculture, Food and  
Rural Development

## Economics & Competitiveness

### November Estimate of Production of Principal Field Crops, 2005

On December 7, 2005, Statistics Canada released the "November Estimate of Production of Principal Field Crops, 2005". Estimates for Alberta were generated from a survey of 9,133 Alberta farms, which was conducted by Statistics Canada during the period from October 18 to November 14. The Statistics and Data Development Unit of Alberta Agriculture, Food and Rural Development (AAFRD) reviewed the survey results and provided input before the estimates were released by Statistics Canada.

Based on the Statistics Canada report, total 2005 production of principal field crops in Alberta, including major grains/oilseeds, specialty crops and forages, is estimated at 29 million tonnes. This is up 7% from a year ago, and 28% above the 10-year average. The high production in 2005 was driven by high crop yields, which resulted from favorable crop growing conditions. Provincial average yields reached record highs for all wheat, barley, oats and canola, and near record high for dry peas. However, poor weather conditions in the fall lowered the crop quality, which is estimated to be below average.

The November estimate is considered to be more accurate than the September estimate since the survey was conducted during the latter part of the season. Sample size for the November estimate survey was also much larger, compared to the September survey. The November estimate is the final production estimate for 2005 field crops. Any revisions to the estimates will be released by Statistics Canada in September/October 2006.

(Please turn over)

# November Estimate of Production of Principal Field Crops, 2005

Agri-Food Statistics  
Update No. 98

## 2005 Crop Production, Alberta

On December 7, 2005, Statistics Canada released a report entitled "November Estimate of Production of Principal Field Crops, 2005". Based on the report, total 2005 production of principal field crops in Alberta is estimated at 29.00 million tonnes, up 7% from a year ago, and 28% above the 10-year average (see Table 1). The high production in 2005 was driven by high crop yields, as crop acreage was virtually unchanged from 2004 (see Table 2). Resulting from favorable crop growing conditions, provincial average yields this year reached record highs for all wheat, barley, oats and canola, and near record high for dry peas. However, poor weather conditions in the fall reduced the crop quality, which is estimated to be below average. Total summerfallow area in 2005 is estimated at 2.20 million acres, compared to 2.15 million acres in 2004, and the 10-year average of 2.98 million acres.

In 2005, total production of spring wheat in Alberta rose 11% from a year ago, to a record 7.34 million tonnes. This is 26% higher than the 10-year average. The provincial average yield for spring wheat is estimated at a record 48.0 bushels per acre, 4% higher than in 2004, and 25% above the 10-year average. Total production of durum wheat, estimated at 1.02 million tonnes, is in line with a year ago, and 19% higher than the 10-year average. The average yield of durum wheat is estimated at a record 43.6 bushels per acre, up 4% from a year ago. Due to the large increase in spring wheat production, total wheat production in 2005 reached a record 8.55 million tonnes. This is 10% higher than in 2004, and 26% above the 10-year average.

Total barley production in Alberta in 2005 is estimated at 5.57 million tonnes, which is on par with the 10-year average, but down 5% from a year ago. A significant reduction in barley acreage negated the impact of slightly improved yields. The provincial average yield of barley reached a record 66.7 bushels per acre, compared to 65.4 bushels per acre in 2004, and the 10-year average of 57.7 bushels per acre. Estimate of 2005 oat production in Alberta is 0.86 million tonnes, 9% above the 10-year average. However, this is down 3% from a year ago, due to a reduction in acreage. As a result of favorable growing conditions, the 2005 oat crop produced a record yield of 79.6 bushels per acre, 4% higher than in 2004, and 21% above the 10-year average.

In 2005, canola production in Alberta jumped 25 per cent from a year ago, to a record 3.65 million tonnes. This is 67% higher than the 10-year average. The record canola production was due to significant increases in yield and harvested area. The provincial canola yield reached a record 37.9 bushels per acre, compared to the previous record high of 33.9 bushels per acre in 2004, and the 10-year average of 26.6 bushels per acre. Total production of flaxseed in Alberta increased 83% from a year ago, to 53,300 tonnes. The high production was driven by increases in yield and harvested acreage.

Total production of dry peas in Alberta is estimated at 0.62 million tonnes, which is down 12% from a year ago, but still 31% higher than the 10-year average.

## 2005 Crop Production, Canada

Based on the November estimate, total 2005 Canadian production increased from a year ago for spring wheat, durum wheat and canola, while production decreased for barley, oats and dry peas. Estimates of total Canadian production in 2005 are 26.78 million tonnes for all wheat, 12.48 million tonnes for barley, 3.43 million tonnes for oats, 9.66 million tonnes for canola, and 3.10 million tonnes for dry peas (see Figure 1).

Table 1: Alberta Crop Production ('000 tonnes)

	2000	2001	2002	2003	2004	2005	10 year	% change	
							average	05 vs 04	05 vs avg
Winter Wheat	46.3	68.0	29.9	144.2	196.0	190.5	83.7	-3%	128%
Spring Wheat	6,267.7	5,266.2	2,800.6	5,278.4	6,593.7	7,337.2	5,838.8	11%	26%
Durum Wheat	809.7	468.1	898.1	1,034.2	1,007.0	1,020.6	861.2	1%	19%
<b>All Wheat</b>	<b>7,123.7</b>	<b>5,802.3</b>	<b>3,728.6</b>	<b>6,456.8</b>	<b>7,796.7</b>	<b>8,548.3</b>	<b>6,783.7</b>	<b>10%</b>	<b>26%</b>
Oats	657.0	592.2	370.1	876.0	886.8	859.0	784.7	-3%	9%
Barley	5,268.9	4,746.4	2,569.1	5,530.2	5,835.0	5,565.0	5,528.0	-5%	1%
Fall Rye	35.6	50.8	14.2	76.2	94.0	79.0	57.8	-16%	37%
Mixed Grains	60.2	53.1	16.3	40.8	44.9	40.8	64.6	-9%	-37%
Flaxseed	17.8	20.3	20.3	25.4	29.2	53.3	29.7	83%	79%
Canola	2,188.6	1,632.9	1,020.6	2,222.6	2,925.7	3,651.4	2,192.0	25%	67%
Dry Peas	620.5	506.2	234.3	507.9	698.1	617.5	471.5	-12%	31%
Mustard Seed	13.8	8.5	21.9	38.8	52.4	31.1	35.1	-41%	-11%
Lentils	9.9	5.0	4.9	6.9	11.3	14.1	9.6	25%	47%
Chick Peas	16.8	20.5	36.5	13.2	8.6	19.6	7.5	128%	161%
Triticale	52.1	18.8	8.3	34.3	27.9	21.8	34.7	-22%	-37%
Sugar Beets	920.3	523.1	422.4	628.1	743.9	607.8	704.9	-18%	-14%
Fodder Corn	462.7	435.4	435.5	453.6	589.7	453.6	331.6	-23%	37%
Tame Hay	5,556.5	4,309.1	3,039.1	6,395.7	7,393.6	8,436.8	5,665.4	14%	49%
<b>Total</b>	<b>23,004</b>	<b>18,725</b>	<b>11,942</b>	<b>23,307</b>	<b>27,138</b>	<b>28,999</b>	<b>22,701</b>	<b>7%</b>	<b>28%</b>

Totals may not add up due to rounding.

Source: Statistics Canada and Alberta Agriculture, Food and Rural Development

Table 2: Alberta Crop Area and Yield

	2004	2004	2004	2005	2005	2005	10 year	Yield % change	
	seeded	hrvtd*	yield	seeded	hrvtd*	yield	avg yld	05 vs 04	05 vs avg
	('000 acres)	(bu/acre)	(bu/acre)	('000 acres)	(bu/acre)	(bu/acre)	(bu/acre)		
Winter Wheat	160	160	45.0	125	125	56.0	41.0	24%	37%
Spring Wheat	5,460	5,260	46.1	5,737	5,615	48.0	38.5	4%	25%
Durum Wheat	900	880	42.0	870	860	43.6	35.0	4%	25%
<b>All Wheat</b>	<b>6,520</b>	<b>6,300</b>	<b>45.5</b>	<b>6,732</b>	<b>6,600</b>	<b>47.6</b>	<b>38.1</b>	<b>5%</b>	<b>25%</b>
Oats	1,450	750	76.7	1,300	700	79.6	66.0	4%	21%
Barley	4,900	4,100	65.4	4,500	3,830	66.7	57.7	2%	16%
Fall Rye	120	90	41.1	100	70	44.4	33.6	8%	32%
Mixed Grains	230	40	55.0	220	35	57.1	53.9	4%	6%
Flaxseed	50	45	25.6	80	75	28.0	22.0	9%	27%
Canola	4,000	3,800	33.9	4,300	4,250	37.9	26.6	12%	43%
Dry Peas	700	655	39.2	555	530	42.8	35.0	9%	22%
Mustard Seed	135	128	18.0	80	75	18.3	15.3	1%	19%
Lentils	18	18	22.9	24	20	26.1	16.6	14%	57%
Chick Peas	15	15	21.1	30	30	24.0	16.2	14%	48%
Triticale	100	25	44.0	65	20	43.0	41.7	-2%	3%
			(tons/acre)			(tons/acre)	(tons/acre)		
Sugar Beets	35	35	23.4	34	33	20.3	20.2	-13%	0%
Fodder Corn	50	35	18.6	45	35	14.3	16.5	-23%	-13%
Tame Hay	6,500	5,900	1.4	6,125	5,345	1.7	1.2	21%	42%
<b>Total</b>	<b>24,823</b>	<b>21,936</b>	-	<b>24,190</b>	<b>21,648</b>	-	-	-	-

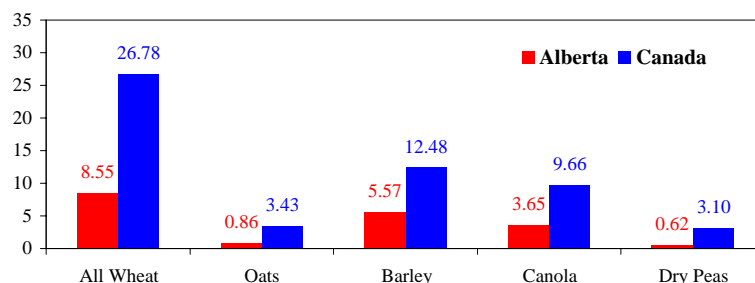
\*hrvtd - harvested

- Data not available.

Totals may not add up due to rounding.

Source: Statistics Canada and Alberta Agriculture, Food and Rural Development

Figure 1: Production of Principal Field Crops, 2005  
Alberta and Canada (million tonnes)



Source: Statistics Canada