

Table No.

47	Livestock on Farms, Canada and Provinces, July 1, 1994-2005
48	Cattle and Calves on Alberta Farms, July 1, 1960-2005.....
49	Pigs on Alberta Farms, July 1, 1962-2005
50	Sheep and Lambs on Alberta Farms, July 1, 1962-2005.....
51	Livestock Slaughtered, Canada and Provinces, 1998-2005
52	Livestock Slaughtered in Alberta, 1995-2005
53	Summary of Alberta Slaughter Hog Marketings, 1996-2005.....
54	Alberta Supply and Disposition Livestock Balance Sheet, 2003-2005
55	Alberta Direct to Packer Sales, 1995-2005
56	Alberta Slaughter Cattle Prices, 1995-2005
57	Average Feeder Cattle Prices, Edmonton, 1993-2005
58	Average Feeder Cattle Prices, Southern Alberta, 1993-2005
59	Average Calf Prices, Edmonton, 1993-2005.....
60	Average Calf Prices, Southern Alberta, 1993-2005.....
61	Alberta Average Slaughter Hog Prices (Index 100), 1994-2005.....
62	Central Alberta Average Market Lamb Prices (95-115 lbs), 1994-2005.....
63	Alberta Sheep and Lamb Marketings, 1994-2005.....
64	Alberta Brand Inspection Record of Live Cattle and Calf Shipments Out-of-Province, 2004 and 2005.....
65	Registrations and Sales of Registered Horses in Alberta, 1996-2005.....
66	Alberta Horse Meat Exports by Destination, 1996-2005.....
67	Pregnant Mare Urine (PMU) Statistics, Alberta, 1988-89 to 2005-06.....
68	Alberta Dairy Industry, 2000-2005.....
69	Output and Value of Poultry Meats, Alberta, 1994- 2005.....
70	Production, Disposition and Value of Eggs, Alberta, 1994-2005.....
71	Chickens Slaughtered in Registered Stations, Alberta, 1993-2005.....
72	Alberta Game Farming Industry, 1996-2005.....

Alberta Livestock Industry, 2005

Cattle and Calves

Alberta's cattle and calf herd increased in 2005. Estimates, as of July 1, 2005, showed the total provincial herd rising 4.7 per cent to 6,700,000 from 6,400,000 in 2004. Higher inventories were typical of most cattle classes. The lone exception was dairy heifers, which fell by 2.6 per cent to 38,000 head. The increase in 2005 inventories could be partially attributed to BSE as producers held cattle on farms due to the lack of export markets for live cattle.

Total beef cows and heifers was estimated at 2,552,000 head, up 3.3 per cent from 2004, and is the largest beef breeding herd on record, eclipsing the record set in 1995; when numbers were at 2,505,000 head. When compared to a year ago, there was a 2.3 per cent rise in beef cow numbers to 2,200,000 head while beef heifer numbers rose 10.0 per cent to 352,000 head. This marked a second consecutive record high for beef cow numbers, as of July 1. Slaughter heifer numbers also reached a second consecutive record high as they climbed to 825,000 head or 7.8 per cent above last year's record of 765,000 head. The provincial dairy herd, comprised of cows and heifers, increased 4.9 per cent to 129,000 head from 127,000 a year ago.

Compared to other Canadian provinces, Alberta (as of July 1, 2005), continued to lead province in cattle and calf inventories (6,700,000 head). Next was Saskatchewan (3,625,000 head), followed by Ontario (2,300,300 head) and Manitoba (1,755,000 head). Alberta accounted for more than one-half (51.6%) of the total estimated western Canadian herd of 12,995,000 head and 39.3 per cent of the national total of 17,060,000 head.

Preliminary data showed Alberta annual total cattle slaughter (excluding calves) in federally and provincially inspected plants at 2,459,587 head in 2005, a 7.0 per cent decrease from 2004 record high. Steers and heifers comprised the bulk of the slaughter, and together accounted for 93.7 per cent of cattle slaughtered. Total cow slaughter fell 28.7 per cent, when compared to 2004. The slaughter decline was partially attributed to the resumption of under thirty-month old live cattle exports to the United States in July and the Lakeside packing plant strike in October.

Nationally, the 2005 data showed cattle slaughter (excluding calves) in federally and provincially inspected plants at 3,931,860 head, with Alberta accounting for 62.6 per cent of the national total. When compared to the western Canadian kill of 2,839,156 head, Alberta contributed 86.6 per cent of this total.

Annual prices for all classes of cattle were above corresponding 2004 levels and showed some recovery following the price collapse after the discovery of BSE in May 2003. The 2005 Alberta annual average slaughter steer prices increased 8.4 per cent to \$84.98 per CWT, while the price for Alberta slaughter heifers rose 7.2 per cent to \$85.87 per CWT. Average Alberta slaughter bull prices strengthened to \$27.17 per CWT or 30.9 per cent of the 2004 level.

Total Alberta live cattle and calf shipments for 2005, as per brand inspection records, increased 161.2 per cent to 492,345 from a year ago largely as a result of the partial resumption of live cattle exports to the United States in July. Virtually all of the animals were exported as feeders, slaughter, or replacement cattle, and are discussed in the following three paragraphs.

Live feeder cattle and calf shipment to all destinations, in 2005, totaled 145,276 head or 53.1 per cent more than last year. There were 125,319 head shipped to other provinces, with the remainder heading to the United States. The largest volume, however, was shipped to Saskatchewan.

With respect to cattle and calves for slaughter, the 2005 total shipments jumped 338.0 per cent to 324,692 head when compared to the 2004 volume of 74,124 head. Of this total, 70.0 per cent of slaughter cattle exports were shipped to the United States.

The 2005 total movement of Alberta's live replacement cattle and calves rose 14.5 per cent to 22,377 head from 19,535 head a year previous. All live replacement cattle and calf exports in 2005 were shipped to the other Canadian provinces.

Pigs

As of July 1, 2005, the estimated total number of pigs on farms in Alberta was 2,020,000 head, declining 0.5 per cent from 2,030,000 head in 2004. The total market hog inventory fell to 1,796,600 head or 1.1 per cent from the year ago total of 1,816,200 head. Alberta's breeding stock inventory, comprising boars, sows, and bred gilts, exhibited an increase in herd size. The breeding stock numbers rose 4.5 per cent from 213,800 head to 223,400 head. Boar numbers fell from 6,800 head a year ago to 6,600 head. The decline is attributed to the increased usage of artificial insemination. Across Canada, Alberta continued to rank fourth in pig inventories, as of July 1, 2005, behind Quebec (4,380,000 head), Ontario (3,725,000 head), and Manitoba (2,940,000 head). In western Canada, the size of the pig herd was estimated at 6,525,000 head, with Alberta accounting for 31.0 per cent. This translated into 13.5 per cent of the national estimate of 14,976,000 head.

Alberta 2005 hog slaughter, in federally and provincially inspected plants, reached its fourth consecutive record high totaling 3,122,016 head, increasing 3.8 per cent from 3,008,995 head a year ago. Slaughter hog marketings (or hogs of Alberta origin slaughtered in Canada) increased in 2005 and set a new record high. Marketings were pegged at 3,574,185 head, or 3.0 per cent higher than the kill in 2004 of 3,468,657 head. Coinciding with the strong marketings in 2005, there was a reduction in the annual index 100 hog price. In 2005, the average Alberta index 100 hog price was \$1.46 per kg, or a 9.7 per cent decrease from the 2004 price of \$1.62 per kg.

Sheep and Lambs

Estimates of sheep and lamb inventory, as of July 1, 2005, showed that the size of the provincial flock remaining flat on a "year-over-year" basis at 248,000 head. The stabilization of the total sheep and lamb flock follows the period of drought, BSE impacts, and relatively poor slaughter lamb prices.

As of July 1, 2005, Alberta ranked third amongst provinces in sheep and lamb inventories (248,000 head), after Ontario (310,000 head) and Quebec (301,000 head). The size of the western Canadian flock was estimated at 550,000 head, with Alberta accounting for 45.1 per cent of the total. Nationally, there were 1,209,100 sheep and lambs on farms, with Alberta contributing 20.5 per cent of the total.

Apiculture

Preliminary estimates indicate that the number of beekeepers in Alberta increased in 2005. The total number is estimated to be 700 and is 0.7 per cent above the 2004 estimate of 695. Nationally, the number of beekeepers also showed a slippage of 0.4 per cent to an estimated 7,895 producers compared to 7,925 in 2004.

Even though beekeeper numbers declined in the province, there was an increase in the estimated number of colonies in 2005 to 250,000 colonies compared to 248,000 a year ago. The average honey price in 2004 was \$3.32 per kilogram, which is 26.2 per cent below the record setting price of \$4.50 per kilogram of 2003. At the national level, colony numbers in 2005 rose by 2.0 per cent to 609,645 from the 2004 total of 597,890. Alberta's share of Canada's total number of colonies decreased in 2005 to an estimated 41.0 per cent from 41.5 per cent a year ago.

Total Alberta honey production for 2005 was estimated at 13,041 tonnes or 14.1 per cent below the 2004 estimate of 15,187 tonnes. Alberta accounted for 38.4 per cent of the estimated national production of honey. The Canadian estimate for honey production in 2005 was 33,918 tonnes, shrinking 0.9 per cent from the 2004 estimate of 34,242 tonnes. The average colony in Alberta produced an estimated 52 kilograms of honey in 2005, or 14.7 per cent lower than the 2004 estimate of 61 kilograms of honey per colony. Nationally, the 2005 average honey production per colony was 56 kilograms or 1.8 per cent below the 2004 estimate of 57 kilograms per colony.

Table 47: Livestock on Farms, Canada and Provinces, July 1, 1994-2005

	Canada	Alberta	Sask.	Manitoba	British Columbia	Ontario	Quebec	Atlantic Provinces
Cattle and Calves - '000 Head								
1994.....	13,924.4	5,316.0	2,607.0	1,236.0	803.0	2,188.0	1,443.5	330.9
1995.....	14,729.6	5,608.0	2,838.0	1,342.0	846.0	2,295.0	1,469.0	331.6
1996.....	15,051.4	5,736.0	2,907.0	1,424.0	867.0	2,299.0	1,486.0	332.4
1997.....	15,058.3	5,848.0	2,834.0	1,449.0	835.0	2,294.0	1,466.0	332.3
1998.....	14,944.4	6,045.0	2,747.0	1,447.0	790.0	2,204.0	1,386.5	324.9
1999.....	14,753.4	6,056.0	2,719.0	1,400.0	800.0	2,120.0	1,343.0	315.4
2000.....	14,968.4	6,279.0	2,750.0	1,400.0	805.0	2,097.0	1,335.0	302.4
2001.....	15,424.5	6,500.0	2,900.0	1,425.0	815.0	2,130.0	1,360.0	294.5
2002.....	15,435.7	6,387.0	2,940.0	1,470.0	836.5	2,140.0	1,370.0	292.2
2003.....	15,738.2	6,100.0	3,220.0	1,590.0	885.0	2,230.0	1,420.0	293.2
2004.....	16,758.0	6,400.0	3,540.0	1,750.0	950.0	2,308.3	1,515.0	294.7
2005.....	17,060.0	6,700.0	3,625.0	1,755.0	915.0	2,300.3	1,470.0	294.7
Pigs - '000 Head								
1994.....	10,728.1	1,778.6	889.8	1,466.4	209.7	2,986.6	3,080.0	317.0
1995.....	11,536.0	2,031.1	868.0	1,666.7	184.8	3,092.6	3,366.3	326.5
1996.....	11,547.6	1,875.9	829.3	1,813.7	175.5	3,065.7	3,455.0	332.5
1997.....	11,672.4	1,822.0	862.0	1,809.5	171.0	3,123.9	3,542.5	341.5
1998.....	12,357.1	1,880.9	930.8	1,998.6	177.1	3,331.0	3,662.5	376.2
1999.....	12,688.8	1,848.2	917.8	2,044.0	173.7	3,381.3	3,949.3	374.5
2000.....	13,401.0	1,918.2	1,028.4	2,295.5	167.9	3,515.9	4,095.1	380.0
2001.....	14,050.4	2,029.4	1,129.1	2,556.0	168.3	3,476.2	4,294.4	397.0
2002.....	14,668.5	2,140.9	1,230.4	2,785.0	168.0	3,609.4	4,353.1	381.7
2003.....	14,630.5	2,030.0	1,250.0	2,850.0	165.0	3,620.0	4,350.0	365.5
2004.....	14,837.7	2,030.0	1,350.0	2,890.0	170.0	3,690.0	4,350.0	357.7
2005.....	14,976.0	2,020.0	1,395.0	2,940.0	170.0	3,725.0	4,380.0	346.0
Sheep and Lambs - '000 Head								
1994.....	825.6	250.0	79.0	33.0	76.0	225.0	114.0	48.6
1995.....	857.6	264.0	78.2	34.5	83.0	227.0	127.0	43.9
1996.....	846.7	244.5	86.0	37.5	77.3	219.9	138.0	43.5
1997.....	821.5	225.7	73.8	42.1	68.5	226.4	141.3	43.7
1998.....	892.0	225.0	89.0	50.0	75.0	249.0	159.7	44.3
1999.....	979.0	240.0	98.0	60.0	73.0	275.0	185.6	47.4
2000.....	1,105.3	270.0	123.0	69.0	72.0	312.0	212.6	46.7
2001.....	1,247.7	287.0	149.0	84.0	85.0	340.0	256.0	46.7
2002.....	1,252.5	288.0	155.0	78.0	70.0	335.0	279.0	47.5
2003.....	1,249.0	255.0	145.0	82.0	73.0	353.0	292.0	49.0
2004.....	1,237.9	248.0	160.0	82.0	80.0	340.0	280.0	47.9
2005.....	1,209.1	248.0	142.0	78.0	82.0	310.0	301.0	48.1

Source: Agriculture Division, Statistics Canada

Table 48: Cattle and Calves on Alberta Farms, July 1, 1960-2005

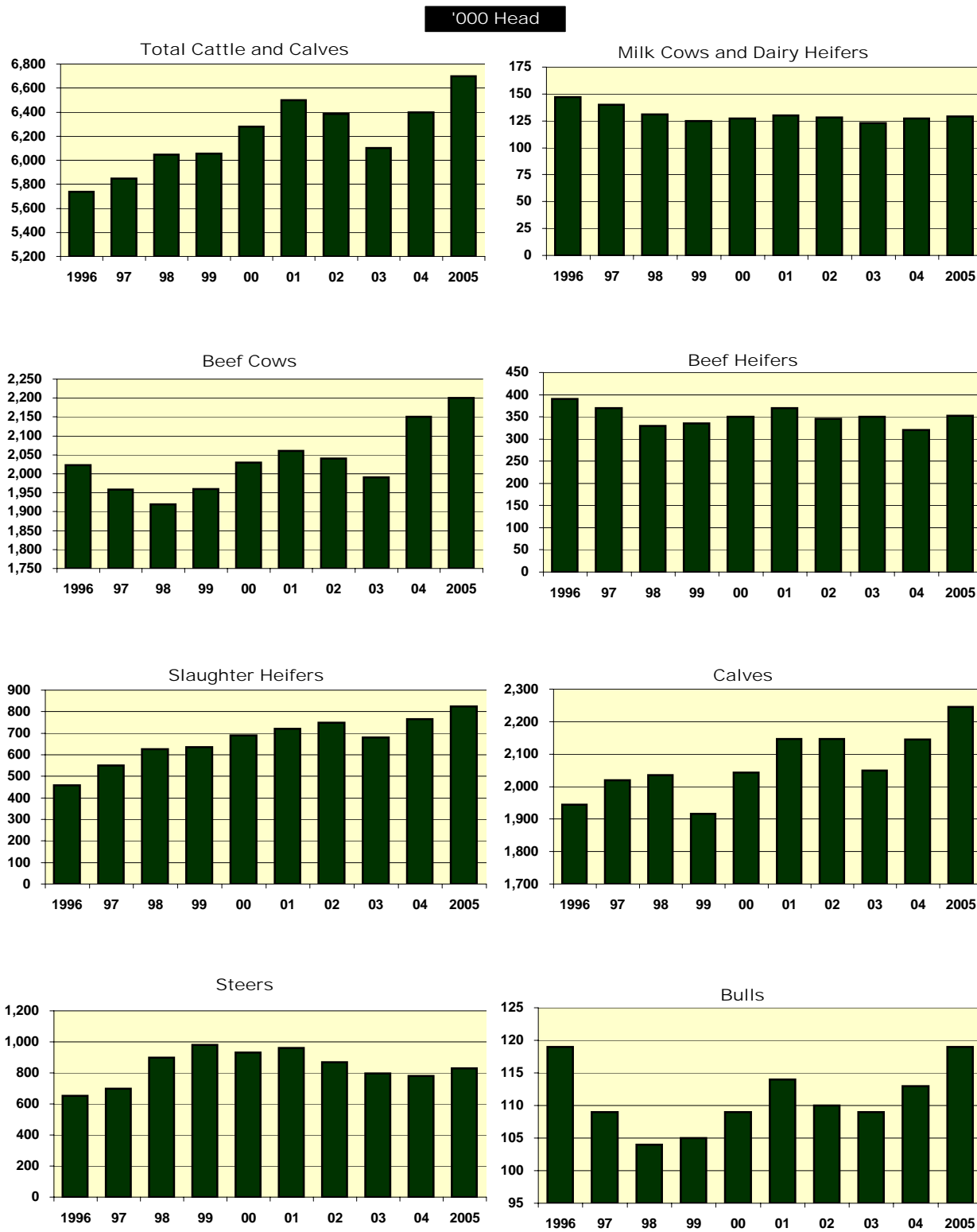
	Milk		Dairy	Beef	(1) Beef	Slaughter	Calves	Steers	Total		Alberta
	Bulls	Cows	Heifers	Cows	Heifers	Heifers			Alberta	Canada	of Canada
'000 Head											
1960.....	55.0	279.0	67.0	827.0	257.0	-	867.0	345.0	2,697.0	11,337.0	23.8
1961.....	57.0	288.0	69.0	890.0	271.0	-	913.0	392.0	2,879.0	11,933.8	24.1
1962.....	57.0	282.0	67.0	910.0	278.0	-	925.0	380.0	2,899.0	12,067.0	24.0
1963.....	58.0	280.0	67.0	940.0	326.0	-	962.0	402.0	3,035.0	12,365.0	24.5
1964.....	63.0	279.0	61.0	1,018.0	401.0	-	1,018.0	480.0	3,320.0	12,994.0	25.6
1965.....	66.0	269.0	55.0	1,108.0	423.0	-	1,076.0	476.0	3,473.0	13,260.0	26.2
1966.....	64.0	243.0	51.0	1,119.0	362.0	-	1,080.0	521.0	3,440.0	12,878.8	26.7
1967.....	65.0	224.0	48.0	1,113.0	405.0	-	1,035.0	503.0	3,393.0	12,697.0	26.7
1968.....	62.0	208.0	44.0	1,098.0	381.0	-	1,018.0	530.0	3,341.0	12,487.0	26.8
1969.....	61.0	192.0	40.0	1,097.0	381.0	-	989.0	526.0	3,286.0	12,366.0	26.6
1970.....	65.0	195.0	38.0	1,170.0	430.0	-	1,070.0	525.0	3,493.0	12,826.0	27.2
1971.....	72.0	186.0	38.0	1,270.0	451.0	-	1,157.0	528.0	3,702.0	13,270.9	27.9
1972.....	75.0	178.0	32.0	1,364.0	500.0	-	1,225.0	550.0	3,924.0	13,736.0	28.6
1973.....	79.0	171.0	34.0	1,509.0	522.0	-	1,319.0	567.0	4,201.0	14,249.0	29.5
1974.....	87.0	165.0	35.0	1,660.0	559.0	-	1,434.0	655.0	4,595.0	15,318.0	30.0
1975.....	87.0	157.0	36.0	1,692.0	550.0	-	1,458.0	709.0	4,689.0	15,622.0	30.0
1976.....	88.0	163.0	51.0	1,530.0	270.0	368.0	1,435.0	770.0	4,675.0	15,063.0	31.0
1977.....	87.0	160.0	50.0	1,500.0	260.0	318.0	1,315.0	660.0	4,350.0	14,292.9	30.4
1978.....	82.0	158.0	51.0	1,400.0	240.0	320.0	1,239.0	645.0	4,135.0	13,352.7	31.0
1979.....	85.0	162.0	53.0	1,370.0	230.0	325.0	1,205.0	650.0	4,080.0	13,238.8	30.8
1980.....	90.0	168.0	56.0	1,400.0	245.0	306.0	1,290.0	600.0	4,155.0	13,381.9	31.0
1981.....	89.5	166.0	54.5	1,368.0	243.0	325.0	1,300.0	607.0	4,153.0	13,364.5	31.1
1982.....	90.0	159.0	50.0	1,394.0	227.0	320.0	1,260.0	580.0	4,080.0	13,170.0	31.0
1983.....	91.0	146.0	48.0	1,388.0	217.0	300.0	1,235.0	540.0	3,965.0	12,835.7	30.9
1984.....	91.0	141.0	49.0	1,368.0	233.0	298.0	1,255.0	540.0	3,975.0	12,581.9	31.6
1985.....	91.0	132.0	49.0	1,345.0	222.0	264.0	1,245.0	492.0	3,840.0	12,160.0	31.6
1986.....	91.0	124.0	51.0	1,315.0	232.0	255.0	1,252.0	426.0	3,746.0	11,787.7	31.8
1987.....	90.0	121.0	52.0	1,369.0	259.0	271.0	1,297.0	465.0	3,924.0	11,815.7	33.2
1988.....	91.0	117.0	50.0	1,444.0	283.0	287.0	1,351.0	526.0	4,149.0	12,153.2	34.1
1989.....	92.0	112.0	51.0	1,506.0	303.0	319.0	1,421.0	571.0	4,375.0	12,456.9	35.1
1990.....	94.0	109.0	49.0	1,567.0	305.0	320.0	1,478.0	568.0	4,490.0	12,560.2	35.7
1991.....	95.0	105.0	47.0	1,635.0	324.0	330.0	1,560.0	575.0	4,671.0	12,842.9	36.4
1992.....	97.0	105.0	47.0	1,667.0	335.0	348.0	1,581.0	631.0	4,811.0	13,025.1	36.9
1993.....	103.0	98.0	42.0	1,760.0	313.0	410.0	1,666.0	549.0	4,941.0	13,251.8	37.3
1994.....	112.0	100.0	43.0	1,917.0	400.0	359.0	1,818.0	567.0	5,316.0	13,924.4	38.2
1995.....	120.0	101.0	43.0	2,050.0	455.0	374.0	1,901.0	564.0	5,608.0	14,729.6	38.1
1996.....	119.0	103.0	44.0	2,023.0	390.0	459.0	1,945.0	653.0	5,736.0	15,051.4	38.1
1997.....	109.0	98.0	42.0	1,959.0	370.0	550.0	2,020.0	700.0	5,848.0	15,058.3	38.8
1998.....	104.0	92.0	39.0	1,920.0	330.0	625.0	2,035.0	900.0	6,045.0	14,944.4	40.4
1999.....	105.0	88.0	37.0	1,960.0	335.0	635.0	1,916.0	980.0	6,056.0	14,753.4	41.0
2000.....	109.0	89.0	38.0	2,030.0	350.0	690.0	2,043.0	930.0	6,279.0	14,968.4	41.9
2001.....	114.0	91.0	39.0	2,060.0	370.0	720.0	2,146.0	960.0	6,500.0	15,424.5	42.1
2002.....	110.0	90.0	38.0	2,040.0	345.0	750.0	2,146.0	868.0	6,387.0	15,435.7	41.4
2003.....	109.0	85.0	38.0	1,990.0	350.0	680.0	2,050.0	798.0	6,100.0	15,738.2	38.8
2004r.....	113.0	88.0	39.0	2,150.0	320.0	765.0	2,145.0	780.0	6,400.0	16,758.0	38.2
2005.....	119.0	91.0	38.0	2,200.0	352.0	825.0	2,245.0	830.0	6,700.0	17,060.0	39.3

Note: Cattle statistics prior to 1975 are as of June 1.

(1) Comprises heifers for beef herd replacement. Prior to 1976, included slaughter heifers.

Source: Agriculture Division, Statistics Canada

Fig. 25 Number of Cattle and Calves on Alberta Farms, July 1, 1996-2005



Source: Agriculture Division, Statistics Canada

Table 49: Pigs on Alberta Farms, July 1, 1962-2005

	Breeding Stock			All Other Pigs				Total		Alberta as a % of Canada
	Boars	Sows	Total	- 45 lbs	45-130 Lbs	+130 lbs	Total	Alberta	Canada	
	'000 Head									
1962.....	-	-	-	-	-	-	-	1,190.0	4,981.0	23.9
1963.....	-	-	-	-	-	-	-	1,113.0	5,211.0	21.4
1964.....	-	-	-	-	-	-	-	1,302.0	5,667.0	23.0
1965.....	-	-	-	-	-	-	-	1,169.0	5,147.0	22.7
1966.....	-	-	-	-	-	-	-	1,092.7	5,401.3	20.2
1967.....	-	-	-	-	-	-	-	1,262.0	6,070.0	20.8
1968.....	-	-	-	-	-	-	-	1,266.0	5,771.0	21.9
1969.....	-	-	-	-	-	-	-	1,187.0	5,809.0	20.4
1970.....	-	-	-	-	-	-	-	1,532.0	7,113.0	21.5
1971.....	-	-	-	-	-	-	-	1,739.1	7,624.0	22.8
1972.....	-	-	-	-	-	-	-	1,510.0	6,995.0	21.6
1973.....	-	-	-	-	-	-	-	1,540.0	7,022.0	21.9
1974.....	-	-	-	-	-	-	-	1,375.0	6,564.0	20.9
1975.....	-	-	-	-	-	-	-	920.0	5,284.0	17.4
1976.....	7.6	86.5	94.1	321.8	257.5	206.5	785.8	879.9	5,855.2	15.0
1977.....	7.8	92.0	99.8	339.5	286.9	218.1	844.5	944.3	6,394.0	14.8
1978.....	8.1	96.8	104.9	365.7	296.1	193.3	855.1	960.0	7,373.7	13.0
1979.....	9.5	121.3	130.8	361.1	363.9	274.2	999.2	1,130.0	9,165.8	12.3
1980.....	9.6	125.8	135.4	401.6	393.1	320.9	1,115.6	1,251.0	10,090.5	12.4
1981.....	9.3	127.0	136.3	368.7	380.0	300.0	1,048.7	1,185.0	9,872.2	12.0
1982.....	9.0	125.0	134.0	377.0	370.0	299.0	1,046.0	1,180.0	9,702.5	12.2
1983.....	10.0	133.0	143.0	385.0	393.0	334.0	1,112.0	1,255.0	9,887.6	12.7
1984.....	11.0	155.0	166.0	435.0	464.0	405.0	1,304.0	1,470.0	10,272.5	14.3
1985.....	10.0	152.0	162.0	402.0	461.0	450.0	1,313.0	1,475.0	10,154.0	14.5
1986.....	11.0	159.0	170.0	444.0	472.0	422.0	1,338.0	1,508.0	9,891.3	15.2
1987.....	13.0	175.0	188.0	506.0	506.0	470.0	1,482.0	1,670.0	10,529.1	15.9
1988.....	13.0	184.0	197.0	530.0	562.0	518.0	1,610.0	1,807.0	11,038.3	16.4
1989.....	14.0	185.0	199.0	540.0	543.0	527.0	1,610.0	1,809.0	10,820.5	16.7
1990.....	13.0	176.0	189.0	505.0	505.0	490.0	1,500.0	1,689.0	10,146.3	16.6
1991.....	13.0	187.0	200.0	545.0	525.0	490.0	1,560.0	1,760.0	10,444.5	16.9
1992.....	14.1	198.9	213.0	560.2	606.5	533.4	1,700.1	1,913.1	10,803.0	17.7
1993.....	12.9	194.2	207.1	544.4	571.0	526.1	1,641.5	1,848.6	10,596.4	17.4
1994.....	13.5	196.6	210.1	533.1	536.5	498.9	1,568.5	1,778.6	10,728.1	16.6
1995.....	13.3	191.6	204.9	586.1	624.2	615.9	1,826.2	2,031.1	11,536.0	17.6
1996.....	12.0	178.5	190.5	538.0	591.7	555.7	1,685.4	1,875.9	11,547.6	16.2
1997.....	10.5	182.4	192.9	525.6	583.0	520.5	1,629.1	1,822.0	11,672.4	15.6
1998.....	9.9	181.2	191.1	526.7	631.8	531.3	1,689.8	1,880.9	12,357.1	15.2
1999.....	9.9	179.2	189.1	553.2	598.2	507.7	1,659.1	1,848.2	12,688.8	14.6
2000.....	9.7	185.7	195.4	561.8	647.0	514.0	1,722.8	1,918.2	13,401.0	14.3
2001.....	8.9	200.9	209.8	586.9	690.8	541.9	1,819.6	2,029.4	14,050.4	14.4
2002.....	7.9	209.0	216.9	621.9	711.5	590.6	1,924.0	2,140.9	14,668.5	14.6
2003.....	7.1	203.5	210.6	636.9	585.6	596.9	1,819.4	2,030.0	14,630.5	13.9
2004.....	6.8	207.0	213.8	619.8	620.4	576.0	1,816.2	2,030.0	14,837.7	13.7
2005.....	6.6	216.8	223.4	615.7	621.9	559.0	1,796.6	2,020.0	14,976.0	13.5

Note: Pig statistics prior to 1975 are as of June 1.

Source: Agriculture Division, Statistics Canada

Table 50: Sheep and Lambs on Alberta Farms, July 1, 1962-2005

	Rams 1 Year Plus	Ewes & Wethers	Lambs, Breeding Under 1 Year	Lambs, Market Under 1 Year	Total		Alberta as a % of Canada
					Alberta	Canada	
'000 Head							
1962.....	-	-	-	-	469.0	1,449.0	32.4
1963.....	-	-	-	-	431.0	1,346.0	32.0
1964.....	-	-	-	-	400.0	1,272.0	31.4
1965.....	-	-	-	-	355.0	1,132.0	31.4
1966.....	-	-	-	-	301.4	1,005.5	30.0
1967.....	-	-	-	-	260.0	922.0	28.2
1968.....	-	-	-	-	210.0	829.2	25.3
1969.....	-	-	-	-	180.0	796.0	22.6
1970.....	-	-	-	-	199.0	796.0	25.0
1971.....	-	-	-	-	244.9	851.3	28.8
1972.....	-	-	-	-	259.0	845.0	30.7
1973.....	-	-	-	-	255.0	832.5	30.6
1974.....	-	-	-	-	250.0	783.5	31.9
1975.....	-	-	-	-	226.0	702.6	32.2
1976.....	-	-	-	-	183.0	577.2	31.7
1977.....	-	-	-	-	146.5	558.6	26.2
1978.....	-	-	-	-	142.5	587.2	24.3
1979.....	-	-	-	-	153.5	648.7	23.7
1980.....	-	-	-	-	178.0	733.8	24.3
1981.....	-	-	-	-	198.0	803.2	24.7
1982.....	-	-	-	-	203.0	811.9	25.0
1983.....	-	-	-	-	202.0	802.9	25.2
1984.....	4.5	85.5	-	-	188.0	768.8	24.5
1985.....	4.1	75.9	-	-	175.0	720.3	24.3
1986.....	3.9	79.0	17.8	82.9	183.6	694.9	26.4
1987.....	4.3	89.0	21.0	88.7	203.0	731.3	27.8
1988.....	4.6	97.0	23.0	106.4	231.0	788.9	29.3
1989.....	5.0	110.0	26.0	110.0	251.0	827.5	30.3
1990.....	5.6	120.0	28.0	121.4	275.0	874.4	31.5
1991.....	6.0	135.0	32.0	126.0	299.0	917.8	32.6
1992.....	7.6	143.5	36.9	123.0	311.0	897.1	34.7
1993.....	6.0	135.2	27.6	118.2	287.0	883.0	32.5
1994.....	6.3	116.0	29.6	98.1	250.0	825.6	30.3
1995.....	5.7	124.7	31.4	102.2	264.0	857.6	30.8
1996.....	6.0	115.3	30.7	92.5	244.5	846.7	28.9
1997.....	5.8	109.5	28.7	81.7	225.7	821.5	27.5
1998.....	5.9	109.1	26.7	83.3	225.0	892.0	25.2
1999.....	6.5	111.0	30.0	92.5	240.0	979.0	24.5
2000.....	6.6	118.2	35.9	109.3	270.0	1,105.3	24.4
2001.....	7.0	128.8	30.4	120.8	287.0	1,247.7	23.0
2002.....	7.5	132.4	29.1	119.0	288.0	1,252.5	23.0
2003.....	6.7	119.0	27.8	101.5	255.0	1,249.0	20.4
2004.....	5.1	101.5	19.3	122.1	248.0	1,237.9	20.0
2005.....	5.1	109.4	22.5	111.0	248.0	1,209.1	20.5

Note: Sheep statistics prior to 1975 are as of June 1.

Source: Agriculture Division, Statistics Canada

Table 51: Livestock Slaughtered (1), Canada and Provinces, 1998-2005

	Canada	Alberta	(2) Sask. & Manitoba	British Columbia	Ontario	Quebec	(3) Atlantic Provinces	
Cattle and Calves - Head								
1998.....	3,663,830	2,114,169	198,752	53,444	817,400	409,495	70,570	
1999.....	3,848,374	2,322,307	194,648	50,259	809,543	413,016	58,601	
2000.....	3,750,399	2,334,903		198,793	764,373	403,452	48,878	
2001.....	3,693,240	2,342,002		211,512	699,416	394,774	45,536	
2002.....	3,749,650	2,367,910		225,919	707,981		447,840	
2003.....	3,435,781	2,071,455		200,487	729,137		434,702	
2004.....	4,334,220	2,648,341		275,492	863,668		546,719	
2005.....	4,276,557	2,462,980		383,013	852,604		577,960	
	Canada	Alberta	Sask.	Manitoba	British Columbia	Ontario	Quebec	Atlantic Provinces
Hogs - Head								
1998.....	16,744,641	1,596,267	1,034,921	2,820,840	298,062	3,358,026	7,135,336	501,189
1999.....	18,771,402	2,135,335	1,023,036	3,073,034	319,593	4,157,888	7,524,386	538,130
2000.....	19,484,817	2,091,472	922,334	3,923,880	346,356	4,039,243	7,653,040	508,492
2001.....	20,541,855	2,218,087	1,040,278	4,147,548	451,171	4,256,837	7,892,285	535,649
2002.....	21,978,971	2,587,197	1,133,882	4,421,297	504,683	4,620,615	8,167,213	544,084
2003.....	22,288,130	2,818,608	1,150,284	4,352,519	512,474	4,757,630	8,173,540	523,075
2004.....	22,701,314	3,008,995	1,149,912	4,355,342	521,714	4,664,010	8,494,115	507,226
2005.....	22,158,685	3,122,016	973,519	4,419,535	503,404	4,602,168	8,095,290	442,753
	Canada	Western Canada	Ontario	Quebec	Atlantic Provinces			
Sheep and Lambs - Head								
1998.....	333,367	66,878	174,859	83,381	8,249			
1999.....	364,529	67,127	196,772	92,283	8,347			
2000.....	401,741	74,124	210,453	107,731	9,433			
2001.....	421,962	82,861	217,333	112,121	9,647			
2002.....	464,726	91,381	242,340	120,904	10,101			
2003.....	508,614	98,143	268,689	130,850	10,932			
2004.....	541,664	116,627	301,050	113,319	10,668			
2005.....	582,085	109,601	308,282	151,503	12,699			

(1) Data represent livestock slaughtered in federally and provincially inspected plants, irrespective of origin.

(2) Data for British Columbia is included with Saskatchewan and Manitoba from 2000 onwards.

(3) Data for Atlantic Provinces is included with Quebec for 2002.

Fig. 26 Slaughter Activity in Alberta, Annual Per Cent Change, 2000-2005



Source: Agriculture and Agri-Food Canada

Table 52: Livestock Slaughtered in Alberta (1), 1995-2005

		Steers	Heifers	Cows	Bulls	Total Cattle	Total Cattle & Calves	Hogs
		Head						
1995.....		901,330	438,697	177,807	4,334	1,537,160	1,210	2,225,036
1996.....		-	-	-	-	1,794,705	854	2,135,395
1997(2).....		1,025,656	684,020	198,518	5,439	1,913,365	574	2,216,615
1998.....		1,111,853	800,052	189,294	8,878	2,113,768	401	1,596,267
1999.....		1,214,464	902,976	184,135	12,091	2,322,085	222	2,135,335
2000.....		1,246,491	885,050	194,593	7,346	2,334,592	311	2,091,472
2001.....		1,232,796	887,062	217,408	4,180	2,341,749	253	2,218,087
2002.....		1,223,119	909,351	231,917	3,207	2,367,580	330	2,587,197
2003								
	Jan.....	82,168	99,753	22,794	213	160,704	389	211,493
	Feb.....	55,479	85,611	16,848	140	163,597	428	219,314
	Mar.....	65,732	89,212	16,887	209	210,745	506	270,857
	Apr.....	128,925	73,474	18,620	407	174,891	386	215,617
	May.....	91,420	41,820	9,223	367	166,215	368	207,955
	Jun.....	77,343	24,883	5,224	329	130,968	469	274,309
	Jul.....	147,306	50,045	2,182	228	159,523	359	216,625
	Aug.....	131,368	54,270	1,471	268	178,991	350	213,835
	Sep.....	90,782	43,226	2,485	425	188,964	433	271,100
	Oct.....	123,166	68,117	7,945	516	166,897	290	219,214
	Nov.....	80,981	79,850	10,780	399	165,779	154	230,835
	Dec.....	78,226	98,852	11,471	317	199,851	198	267,454
	Annual (2).....	1,152,896	809,113	125,930	3,818	2,067,125	4,330	2,818,608
2004r								
	Jan.....	83,162	94,791	14,484	425	177,780	204	227,485
	Feb.....	87,401	90,867	19,576	584	195,456	212	225,237
	Mar.....	100,559	137,738	22,690	1,213	260,934	385	300,795
	Apr.....	90,809	86,188	16,656	931	198,437	363	224,949
	May.....	116,028	68,176	10,934	1,256	203,553	225	230,566
	Jun.....	160,353	81,009	17,401	1,436	257,736	380	280,740
	Jul.....	125,530	67,314	14,274	1,722	205,406	300	224,391
	Aug.....	119,624	67,274	13,638	1,616	198,379	278	229,135
	Sep.....	143,854	91,051	18,402	2,376	253,071	341	275,359
	Oct.....	104,186	84,249	14,776	1,566	203,298	289	226,431
	Nov.....	100,936	89,906	18,298	1,768	214,315	292	240,586
	Dec.....	98,663	102,693	21,541	1,744	276,267	440	323,321
	Annual (2).....	1,331,105	1,061,256	202,670	16,637	2,644,632	3,709	3,008,995
2005p								
	Jan.....	94,129	86,417	3,350	472	184,368	268	238,661
	Feb.....	94,948	82,133	666	313	178,060	284	236,802
	Mar.....	124,451	135,574	662	386	261,073	351	292,102
	Apr.....	121,402	98,270	1,990	482	222,144	296	241,234
	May.....	114,191	81,181	14,814	1,263	211,449	282	225,184
	Jun.....	159,795	72,700	20,528	1,500	254,523	361	286,651
	Jul.....	126,965	56,045	14,291	1,369	198,530	225	243,474
	Aug.....	149,223	78,672	14,112	1,141	193,587	232	233,590
	Sep.....	102,292	81,028	14,286	1,147	248,034	298	288,008
	Oct.....	65,730	64,746	11,885	1,018	142,237	278	231,545
	Nov.....	81,015	94,444	25,980	1,356	159,924	269	277,778
	Dec.....	59,538	80,276	22,027	946	205,658	249	326,987
	Annual (2).....	1,293,679	1,011,486	144,591	11,393	2,459,587	3,393	3,122,016

(1) Data represents livestock slaughtered in federally and provincially inspected plants in Alberta, irrespective of origin.

(2) Cattle by class type: monthly data do not add up to totals as revisions are unavailable. Breakdown for 1996 unavailable.

Source: "Livestock Market Review", Agriculture and Agri-Food Canada; and Canfax

Fig. 27 Number of Cattle Slaughtered (Excluding Calves), Alberta as a Per Cent of Canada, 1998-2005

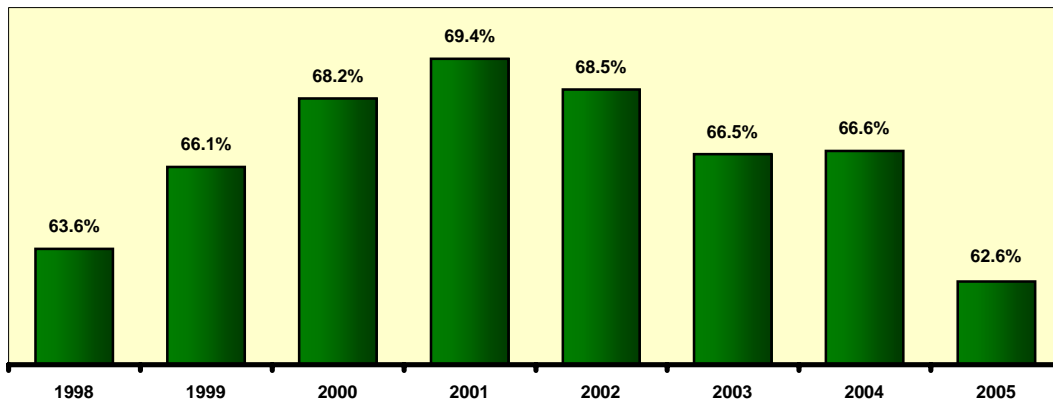


Fig. 28 Cattle and Calves and Hogs Slaughtered in Alberta and Canada, 1998-2005



Note: Data represents livestock slaughtered in federally and provincially inspected plants in Alberta, irrespective of origin.

Source: "Livestock Market Review", Agriculture and Agri-Food Canada; and Canfax

Table 53: Summary of Alberta Slaughter Hog Marketings (1), 1996-2005

	Head		Head
1996.....	2,224,776	2001.....	3,016,333
1997.....	2,221,730	2002.....	2,933,187
1998.....	1,746,343	2003.....	3,494,660
1999.....	2,677,053	2004.....	3,468,657
2000.....	2,953,509	2005.....	3,574,185

(1) Data represents slaughter in federally and provincially inspected plants by province of origin.

Source: "Livestock Market Review", Agriculture and Agri-Food Canada.

Table 54: Alberta Supply and Disposition Livestock Balance Sheet, 2003-2005

July 1 to June 30	Cattle and Calves			Pigs			Sheep and Lambs		
	2003	2004	2005p	2003	2004	2005p	2003	2004	2005p
	('000 Head)								
Beginning Inventory at									
July 1 (previous year).....	6,387.0	6,100.0	6,400.0	2,140.9	2,030.0	2,030.0	288.0	255.0	248.0
Births (1).....	1,970.2	1,967.0	2,014.1	3,604.1	3,764.9	3,967.6	185.2	169.6	167.7
Interprovincial Imports (2).....	796.6	887.1	1,234.4	18.0	22.5	57.9	0.0	0.0	0.0
International Imports.....	4.3	0.0	0.0	1.5	1.3	0.2	0.1	0.0	0.0
Total Supply.....	9,158.1	8,954.1	9,648.5	5,764.5	5,818.7	6,055.7	473.3	424.6	415.7
Interprovincial Exports (2).....	322.2	110.7	139.2	20.0	20.0	20.0	65.0	36.2	25.9
International Exports.....	417.7	0.0	0.0	460.6	471.4	599.6	31.2	0.0	0.0
Total Slaughter (3).....	2,113.8	2,238.5	2,543.6	3,065.2	3,105.9	3,212.6	98.5	116.3	117.5
Deaths (4).....	204.4	204.9	265.7	188.7	191.4	203.5	23.6	24.1	24.3
Total Disposition.....	3,058.1	2,554.1	2,948.5	3,734.5	3,788.7	4,035.7	218.3	176.6	167.7
Ending Inventory at									
June 30 (current year).....	6,100.0	6,400.0	6,700.0	2,030.0	2,030.0	2,020.0	255.0	248.0	248.0

Note: Ending Inventory is derived by subtracting Total Disposition from Total Supply.

(1) Birth estimates for pigs have been adjusted for peri-natal mortality.

(2) Interprovincial imports and exports of feeder animals only. This number reflects net interprovincial movements in the case of sheep and lambs.

(3) Animals slaughtered in federally and provincially inspected plants (adjusted for interprovincial movements) and farm slaughter.

(4) Deaths include on-farm mortality and condemnations at slaughter.

Source: Agriculture Division, Statistics Canada

Table 55: Alberta Direct to Packer Sales, 1995-2005

	Steers - Live Sales		Heifers - Live Sales		Steers - Railgrade		Heifers - Railgrade	
	No. Sold	\$/100 Lbs.	No. Sold	\$/100 Lbs.	No. Sold	\$/100 Lbs.	No. Sold	\$/100 Lbs.
1995.....	512,953	82.91	195,000	84.72	20,995	139.98	5,178	147.60
1996.....	460,998	78.80	219,217	78.89	73,638	129.20	19,366	132.79
1997.....	497,354	83.92	239,144	83.77	68,526	141.56	31,216	137.88
1998.....	536,635	83.60	244,132	84.44	83,610	140.91	29,321	143.04
1999.....	498,088	89.22	211,600	90.24	84,930	148.91	50,386	151.70
2000.....	500,723	94.98	210,500	96.19	106,976	158.95	58,644	159.24
2001.....	519,424	102.68	92,865	172.67	211,879	102.14	59,970	170.80
2002.....	529,805	97.58	251,341	99.50	150,263	158.84	73,344	167.12
2003								
Jan.....	29,164	113.91	20,367	114.24	-	189.63	-	189.59
Feb.....	28,722	114.78	22,123	115.53	-	191.32	-	192.01
Mar.....	45,433	111.41	24,799	112.75	-	183.55	-	187.48
Apr.....	37,464	109.11	11,056	108.89	-	181.63	-	183.17
May.....	34,871	107.38	8,842	107.73	-	177.58	-	177.89
Jun.....	33,630	66.69	6,804	64.54	-	106.03	-	105.92
Jul.....	49,038	38.40	12,284	39.00	-	72.75	-	77.25
Aug.....	44,810	35.47	7,086	35.42	-	62.02	-	61.82
Sep.....	53,103	71.75	24,419	73.03	-	113.79	-	121.51
Oct.....	43,491	78.27	22,265	77.95	-	126.73	-	127.19
Nov.....	15,136	84.56	23,117	83.79	-	140.95	-	138.65
Dec.....	29,346	82.79	31,604	84.26	-	139.07	-	139.13
Annual.....	444,208	81.38	214,766	89.04	-	140.42	-	141.80
2004								
Jan.....	36,471	80.51	29,205	83.06	5,868	131.95	7,809	139.55
Feb.....	37,059	79.50	25,012	79.09	10,008	132.96	6,326	131.07
Mar.....	26,360	86.39	23,785	86.63	17,178	111.15	16,591	147.08
Apr.....	29,429	83.71	20,402	83.97	9,401	140.06	9,422	141.59
May.....	35,522	82.71	21,164	84.05	11,256	139.20	4,885	139.95
Jun.....	45,448	71.93	26,169	71.99	19,643	120.48	7,644	120.11
Jul.....	35,987	70.59	16,367	70.53	15,744	118.61	6,728	118.53
Aug.....	34,889	66.58	14,128	67.03	11,470	113.02	5,213	112.48
Sep.....	58,532	77.26	29,743	77.50	16,364	127.90	8,156	128.21
Oct.....	45,781	78.00	25,534	78.05	12,340	130.44	6,710	131.71
Nov.....	45,004	79.04	31,502	78.91	8,338	132.22	8,722	133.47
Dec.....	52,604	84.94	43,921	85.00	16,955	142.91	9,165	143.14
Annual.....	483,086	78.27	306,932	79.69	154,565	127.17	97,371	134.37
2005								
Jan.....	43,369	85.22	29,248	85.49	13,006	142.48	8,006	143.28
Feb.....	41,532	88.59	25,644	88.77	9,089	148.63	17,309	122.37
Mar.....	54,235	83.26	27,557	83.50	22,261	138.81	15,723	138.12
Apr.....	41,850	80.22	27,575	80.69	25,053	133.48	10,699	135.13
May.....	44,323	79.45	15,783	79.31	20,378	132.29	6,905	132.78
Jun.....	69,260	80.32	21,739	80.52	23,795	134.07	10,658	134.43
Jul.....	61,639	84.71	16,750	84.39	23,628	140.84	12,083	140.13
Aug.....	78,477	85.47	25,443	84.99	21,137	140.54	12,031	140.32
Sep.....	65,154	84.84	29,551	84.80	19,317	139.82	13,263	140.37
Oct.....	44,114	86.55	25,877	86.34	3,430	143.63	6,486	145.13
Nov.....	35,631	91.02	28,382	92.20	16,444	151.83	10,167	151.51
Dec.....	34,081	96.00	21,419	95.81	12,802	159.82	10,588	159.48
Annual.....	613,665	84.93	294,968	85.74	210,340	140.53	133,918	139.23

Source: "Livestock Market Review", Agriculture and Agri-Food Canada

Table 56: Alberta Slaughter Cattle Prices, 1995-2005

	Slaughter Steers (1)	Slaughter Heifers (1)	Cows D1/D2	Cows D3	Feeder Cows	Bulls
	\$/100 Lbs. Live					
1995.....	82.90	84.71	51.26	45.09	55.68	59.46
1996.....	78.42	78.67	44.92	38.17	44.54	48.58
1997.....	84.00	83.85	50.48	44.11	53.01	56.84
1998.....	83.56	84.17	50.91	45.45	53.29	61.07
1999.....	89.30	90.34	55.26	48.21	58.38	64.29
2000.....	95.00	95.90	60.47	53.83	63.37	69.40
2001.....	102.82	102.29	63.99	56.42	66.20	75.03
2002.....	97.14	99.58	57.04	50.88	59.08	70.67
2003.....	84.28	85.35	37.04	29.44	45.84	40.85
2004.....	78.40	80.11	23.89	17.48	26.61	20.76
2005						
Jan.....	85.26	85.58	21.42	16.11	-	18.54
Feb.....	88.68	88.77	25.33	18.82	26.66	24.60
Mar.....	83.19	83.25	30.25	22.41	31.81	30.73
Apr.....	80.14	80.73	24.06	18.89	27.50	25.42
May.....	79.54	79.46	23.58	18.38	29.00	22.00
Jun.....	80.42	80.64	24.04	18.82	28.50	22.46
Jul.....	84.77	84.52	29.36	22.52	29.31	26.68
Aug.....	85.03	84.62	37.54	29.64	34.75	36.26
Sep.....	85.19	85.12	34.60	27.99	36.56	31.28
Oct.....	86.57	86.63	31.26	24.23	36.31	29.38
Nov.....	91.98	92.71	31.33	22.99	37.28	28.20
Dec.....	96.42	96.36	36.75	27.52	38.71	30.50
Annual.....	84.98	85.87	29.13	22.36	32.40	27.17

(1) Weighted average of weekly prices.

Source: Canfax

Fig. 29 Alberta Slaughter Cattle Prices, 1995-2005

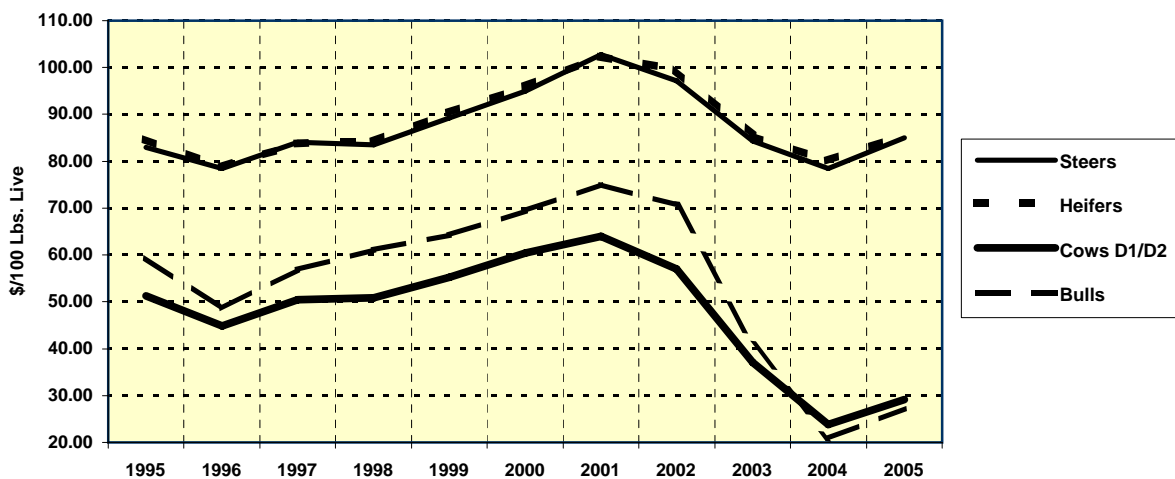


Table 57: Average Feeder Cattle Prices, Edmonton (1), 1993-2005

	Feeder Steers				Feeder Heifers			
	+900 Lbs.	800 to 900 Lbs.	700 to 800 Lbs.	600 to 700 Lbs.	+800 Lbs.	700 to 800 Lbs.	600 to 700 Lbs.	500 to 600 Lbs.
	\$/100 Lbs. Live				\$/100 Lbs. Live			
1993.....	103.31	106.52	112.34	121.18	100.79	105.20	110.86	118.67
1994.....	101.16	107.11	110.79	114.10	100.11	106.84	109.50	113.45
1995.....	85.91	91.36	93.78	94.17	86.71	90.49	91.01	91.29
1996.....	73.53	74.89	75.84	77.07	68.12	69.29	69.00	69.58
1997.....	89.35	95.71	99.53	104.36	87.56	91.57	94.32	97.42
1998.....	90.80	98.56	104.39	111.37	90.80	97.95	103.31	109.18
1999.....	96.52	104.48	110.60	119.43	95.22	103.88	110.87	118.47
2000.....	109.61	119.61	128.15	139.78	109.90	122.26	131.06	142.90
2001.....	115.15	124.98	133.42	143.28	118.73	127.45	135.27	145.05
2002.....	105.14	111.57	116.79	123.54	106.91	111.17	115.85	122.15
2003								
Jan.....	111.75	115.75	118.86	126.20	110.14	112.65	119.27	127.05
Feb.....	106.35	109.12	114.13	124.65	105.57	109.47	117.76	128.89
Mar.....	101.52	105.49	112.30	124.61	101.96	108.46	116.83	125.96
Apr.....	102.15	108.58	118.21	130.53	104.28	112.95	121.88	131.15
May.....	101.14	109.22	120.53	126.58	106.79	114.27	124.43	130.36
Jun.....	89.31	97.63	105.83	117.51	96.63	101.23	112.26	118.77
Jul.....	80.80	89.25	98.15	107.90	85.00	95.70	101.95	114.56
Aug.....	87.47	91.30	95.34	96.80	84.60	88.13	90.08	91.17
Sep.....	100.59	106.54	108.63	110.88	99.81	102.61	102.85	106.33
Oct.....	100.12	105.33	105.20	107.08	98.21	98.50	98.45	101.82
Nov.....	101.82	106.27	107.19	109.00	100.16	99.94	101.30	107.13
Dec.....	97.35	100.89	102.58	106.45	92.96	93.74	97.72	105.30
Annual.....	98.36	103.78	108.91	115.68	98.84	103.14	108.73	115.71
2004								
Jan.....	75.85	77.87	81.40	90.64	74.49	77.99	82.53	86.72
Feb.....	68.00	69.17	71.29	79.69	65.05	67.28	70.86	75.55
Mar.....	79.96	81.15	87.16	98.10	76.63	80.35	86.64	93.89
Apr.....	86.73	90.34	98.07	108.37	84.27	89.87	95.81	102.05
May.....	82.46	87.83	95.44	103.87	83.11	88.60	94.02	96.19
Jun.....	74.88	82.18	91.35	99.37	73.43	79.62	84.26	86.45
Jul.....	73.80	81.39	90.41	96.17	74.72	79.43	85.19	87.88
Aug.....	73.96	79.96	84.87	90.45	73.43	77.12	79.38	80.09
Sep.....	83.88	86.75	90.06	92.54	81.69	81.92	82.06	82.64
Oct.....	86.33	88.63	90.66	92.22	82.50	82.54	81.73	84.41
Nov.....	87.39	89.30	90.67	94.09	83.03	82.98	83.72	88.44
Dec.....	89.24	92.54	95.97	100.84	85.34	87.21	90.65	95.93
Annual.....	80.21	83.93	88.95	95.53	78.14	81.24	84.74	88.35
2005								
Jan.....	95.38	99.86	102.36	111.56	91.42	93.33	97.39	104.67
Feb.....	95.83	101.60	107.58	117.05	94.14	98.24	103.06	110.97
Mar.....	83.42	89.86	96.73	107.47	82.59	88.59	95.19	102.19
Apr.....	82.24	87.13	96.46	105.98	81.54	86.75	92.66	97.04
May.....	86.58	92.87	101.85	111.07	86.54	91.28	97.39	101.49
Jun.....	88.31	95.67	105.84	113.78	87.86	93.69	100.77	105.71
Jul.....	100.15	107.71	113.37	116.49	98.18	103.94	107.14	110.57
Aug.....	107.69	115.10	121.81	126.88	107.74	112.59	116.27	119.45
Sep.....	108.30	115.61	121.54	125.19	107.98	111.74	113.80	116.61
Oct.....	110.93	117.59	121.89	126.31	111.71	113.66	115.48	119.89
Nov.....	113.71	117.57	119.72	125.36	110.82	110.17	114.11	121.78
Dec.....	113.89	116.82	119.80	125.61	108.76	110.83	115.08	121.54
Annual.....	98.87	104.78	110.75	117.73	97.44	101.23	105.70	110.99

(1) Prices prior to 1996 are weighted averages.

Source: "Livestock Market Review", Agriculture and Agri-Food Canada; and Canfax

Table 58: Average Feeder Cattle Prices, Southern Alberta (1), 1993-2005

	Feeder Steers				Feeder Heifers			
	+900 Lbs.	800 to 900 Lbs.	700 to 800 Lbs.	600 to 700 Lbs.	+800 Lbs.	700 to 800 Lbs.	600 to 700 Lbs.	500 to 600 Lbs.
	\$/100 Lbs. Live				\$/100 Lbs. Live			
1993.....	101.85	105.33	109.14	119.73	102.66	106.24	113.26	120.75
1994.....	100.94	106.63	112.72	113.96	101.83	108.78	114.31	112.89
1995.....	86.45	93.98	97.38	97.08	87.15	92.70	95.17	91.88
1996.....	73.10	76.04	76.91	77.20	67.93	72.49	71.60	71.24
1997.....	88.48	96.38	99.79	104.70	87.16	94.51	98.27	100.06
1998.....	89.57	98.83	105.01	112.31	90.84	100.14	105.58	110.37
1999.....	96.51	106.39	111.81	121.11	97.09	107.50	114.60	121.65
2000.....	108.89	121.03	129.13	140.85	109.91	123.72	132.72	144.52
2001.....	115.65	126.60	134.80	145.22	120.14	128.74	136.54	145.28
2002.....	105.84	112.01	117.43	124.70	108.63	113.14	118.38	124.55
2003								
Jan.....	111.91	116.11	120.20	127.01	114.22	116.44	120.16	130.16
Feb.....	108.21	110.70	116.10	127.62	108.38	112.02	121.04	129.30
Mar.....	103.92	107.58	114.41	127.19	105.33	110.97	120.00	129.07
Apr.....	104.60	110.63	119.67	131.63	108.14	113.87	123.18	131.95
May.....	103.38	110.81	119.31	129.16	105.10	110.99	121.92	127.58
Jun.....	92.50	94.00	118.69	125.25	97.88	98.25	109.38	118.79
Jul.....	85.75	102.50	108.19	120.63	95.88	99.94	108.00	-
Aug.....	88.78	96.62	102.06	102.76	88.35	90.36	97.61	101.38
Sep.....	104.12	108.16	112.86	113.61	102.91	104.00	107.10	109.89
Oct.....	102.94	107.43	109.91	111.21	101.90	101.16	100.83	104.84
Nov.....	101.97	106.67	109.81	111.74	102.52	102.80	104.68	111.95
Dec.....	93.81	101.69	102.25	107.01	99.46	97.10	101.33	111.67
Annual.....	100.16	106.08	112.79	119.57	102.51	104.83	111.27	118.78
2004								
Jan.....	76.56	79.05	82.37	87.45	71.88	74.19	78.54	86.71
Feb.....	65.84	65.59	70.08	77.84	63.60	66.49	72.09	76.50
Mar.....	78.96	82.08	86.42	97.43	75.85	79.19	86.40	93.41
Apr.....	85.26	90.70	97.81	105.88	83.52	86.69	93.77	100.16
May.....	84.18	90.38	97.28	106.77	84.08	88.99	93.09	96.18
Jun.....	70.00	78.49	83.44	90.77	72.17	76.25	80.44	83.42
Jul.....	70.90	76.80	84.11	86.14	70.72	77.39	79.72	81.59
Aug.....	73.38	79.03	82.72	85.03	73.38	76.11	76.67	76.70
Sep.....	82.77	87.08	89.44	91.28	81.68	82.22	82.92	83.14
Oct.....	87.43	89.90	90.46	92.50	83.74	81.92	82.34	84.92
Nov.....	87.09	88.47	90.07	94.45	83.44	83.80	86.20	93.05
Dec.....	89.06	91.49	94.10	98.20	85.75	89.21	93.63	100.84
Annual.....	79.29	83.26	87.36	92.81	77.48	80.20	83.82	88.05
2005								
Jan.....	94.71	101.30	104.46	112.32	94.93	97.70	102.80	109.23
Feb.....	96.16	101.91	108.09	117.89	96.91	100.33	105.80	113.66
Mar.....	86.21	90.82	98.93	110.16	86.56	90.71	98.38	104.78
Apr.....	84.52	87.70	95.87	105.33	83.93	88.87	94.10	101.94
May.....	87.07	93.49	100.75	110.73	87.44	91.82	97.58	102.58
Jun.....	86.81	95.74	99.37	107.77	88.40	91.54	97.06	101.18
Jul.....	101.08	109.85	114.95	118.96	101.31	104.94	108.86	111.97
Aug.....	108.22	115.46	122.02	125.07	109.26	113.08	116.20	118.58
Sep.....	109.24	117.28	122.17	126.76	109.49	114.31	117.02	120.42
Oct.....	112.53	118.14	122.24	128.39	113.89	115.34	118.96	123.61
Nov.....	110.53	116.22	121.27	126.86	110.57	113.25	118.21	123.35
Dec.....	108.89	114.74	121.20	127.31	110.49	113.67	118.22	127.47
Annual.....	98.83	105.22	110.94	118.13	99.43	102.96	107.77	113.23

(1) Prices prior to 1996 are weighted averages.

Source: "Livestock Market Review", Agriculture and Agri-Food Canada; and Canfax

Table 59: Average Calf Prices, Edmonton (1), 1993-2005

	Feeder Steer Calves			Feeder Heifer Calves	
	500 to 600 Lbs.	400 to 500 Lbs.	Under 400 Lbs.	400 to 500 Lbs.	300 to 400 Lbs.
	\$/100 Lbs. Live			\$/100 Lbs. Live	
1993.....	130.94	140.52	154.28	126.59	136.01
1994.....	120.18	132.90	144.43	122.24	132.86
1995.....	97.24	101.75	108.17	92.86	97.74
1996.....	78.48	79.58	80.23	70.05	70.37
1997.....	108.90	113.04	114.84	99.53	100.28
1998.....	118.54	126.99	130.94	114.95	117.90
1999.....	129.79	139.78	147.74	127.72	134.97
2000.....	153.04	171.58	189.76	159.09	174.75
2001.....	156.24	174.28	192.78	160.45	175.85
2002.....	131.97	144.04	152.10	131.02	137.99
2003					
Jan.....	136.07	147.69	148.77	136.79	140.22
Feb.....	140.13	150.68	155.63	140.06	141.92
Mar.....	136.01	144.65	143.67	137.06	136.08
Apr.....	142.27	148.90	152.69	137.86	139.60
May.....	134.81	151.47	155.83	135.58	143.93
Jun.....	129.25	134.44	142.50	123.51	131.39
Jul.....	114.25	119.50	124.25	116.50	114.75
Aug.....	101.25	106.14	112.52	95.85	101.93
Sep.....	115.28	123.02	132.92	111.81	119.75
Oct.....	113.01	122.79	132.31	111.09	119.33
Nov.....	116.89	130.93	138.29	116.59	123.76
Dec.....	115.60	128.81	135.69	114.29	121.15
Annual.....	124.57	134.09	139.59	123.08	127.82
2004					
Jan.....	99.15	103.04	103.50	89.61	90.50
Feb.....	86.95	92.66	95.99	80.34	83.22
Mar.....	104.93	107.94	108.79	97.58	98.85
Apr.....	114.29	115.94	120.75	104.69	106.66
May.....	108.20	110.58	112.25	96.61	98.67
Jun.....	101.85	103.30	105.61	87.78	90.38
Jul.....	97.71	98.36	98.75	88.52	88.63
Aug.....	93.15	94.42	97.52	81.49	86.50
Sep.....	94.89	100.86	104.24	87.73	90.44
Oct.....	98.03	108.11	114.82	91.61	96.47
Nov.....	102.80	113.53	117.91	96.38	102.61
Dec.....	108.71	119.28	123.53	103.19	109.23
Annual.....	100.89	105.67	108.64	92.13	95.18
2005					
Jan.....	118.59	124.00	122.00	110.52	110.25
Feb.....	124.45	129.22	132.59	115.72	118.77
Mar.....	117.43	121.65	120.18	106.51	108.78
Apr.....	110.47	112.26	114.17	101.03	103.23
May.....	115.43	116.11	115.96	104.47	105.30
Jun.....	116.41	117.87	115.75	107.63	106.63
Jul.....	118.94	121.33	123.31	111.73	113.63
Aug.....	131.72	137.88	147.19	124.21	132.02
Sep.....	131.49	141.94	147.37	123.44	129.14
Oct.....	134.72	148.92	157.45	129.28	135.45
Nov.....	135.60	149.09	155.05	130.80	133.94
Dec.....	136.09	146.14	151.78	128.00	131.64
Annual.....	124.28	130.53	133.57	116.11	119.07

(1) Prices prior to 1996 are weighted averages.

Source: "Livestock Market Review", Agriculture and Agri-Food Canada; and Canfax

Table 60: Average Calf Prices, Southern Alberta (1), 1993-2005

	Feeder Steer Calves			Feeder Heifer Calves	
	500 to 600 Lbs.	400 to 500 Lbs.	Under 400 Lbs.	400 to 500 Lbs.	300 to 400 Lbs.
	\$/100 Lbs. Live			\$/100 Lbs. Live	
1993.....	129.88	139.10	144.25	127.54	131.78
1994.....	116.95	124.08	128.28	118.36	120.97
1995.....	95.35	99.12	105.89	93.24	96.29
1996.....	78.06	79.14	82.60	71.46	73.59
1997.....	109.17	114.07	114.59	101.70	98.60
1998.....	119.84	125.85	128.31	115.88	120.77
1999.....	130.22	137.90	145.04	128.40	135.42
2000.....	154.02	169.15	182.76	156.17	170.16
2001.....	157.88	170.32	185.07	156.59	169.21
2002.....	133.21	140.74	147.54	130.31	135.76
2003					
Jan.....	138.35	146.70	151.83	137.41	141.38
Feb.....	135.85	143.76	145.86	135.75	135.05
Mar.....	135.96	143.48	146.55	133.96	135.31
Apr.....	138.80	143.83	147.25	135.83	137.88
May.....	137.33	142.75	148.00	129.52	135.00
Jun.....	130.34	122.50	135.00	125.50	-
Jul.....	-	-	-	-	-
Aug.....	111.13	109.50	120.00	108.13	116.25
Sep.....	113.43	119.93	127.02	113.47	117.02
Oct.....	116.12	127.43	133.96	113.65	119.12
Nov.....	122.06	136.29	145.82	120.56	126.14
Dec.....	120.34	135.00	144.08	118.12	123.40
Annual.....	127.25	133.74	140.49	124.72	128.66
2004					
Jan.....	93.19	99.63	103.25	94.25	96.25
Feb.....	83.65	87.92	92.88	81.33	83.00
Mar.....	105.12	107.41	109.99	96.69	98.86
Apr.....	111.66	114.12	115.38	103.11	104.84
May.....	109.50	110.34	108.44	96.23	96.78
Jun.....	91.80	93.95	96.50	84.72	89.00
Jul.....	88.28	92.41	93.25	82.38	-
Aug.....	85.68	87.88	93.22	79.38	-
Sep.....	93.72	98.51	102.99	86.15	90.17
Oct.....	97.00	109.30	115.47	90.69	95.64
Nov.....	103.30	115.75	120.59	101.22	103.61
Dec.....	106.70	118.33	120.48	103.45	114.39
Annual.....	97.47	102.96	106.04	91.63	97.25
2005					
Jan.....	118.43	121.08	128.52	114.35	118.71
Feb.....	126.43	129.97	134.31	118.63	119.59
Mar.....	118.78	119.25	125.04	110.38	109.20
Apr.....	115.41	117.18	121.13	105.71	111.45
May.....	117.53	119.05	122.04	107.49	108.26
Jun.....	110.67	112.38	112.06	101.96	104.42
Jul.....	121.28	123.74	125.31	114.97	119.50
Aug.....	127.38	135.51	140.88	126.58	128.80
Sep.....	132.02	141.57	145.56	129.64	133.03
Oct.....	134.14	144.60	151.59	132.28	136.78
Nov.....	136.12	148.55	152.88	132.44	137.13
Dec.....	135.43	149.09	152.27	132.42	133.96
Annual.....	124.47	130.16	134.30	118.90	121.74

(1) Prices prior to 1996 are weighted averages.

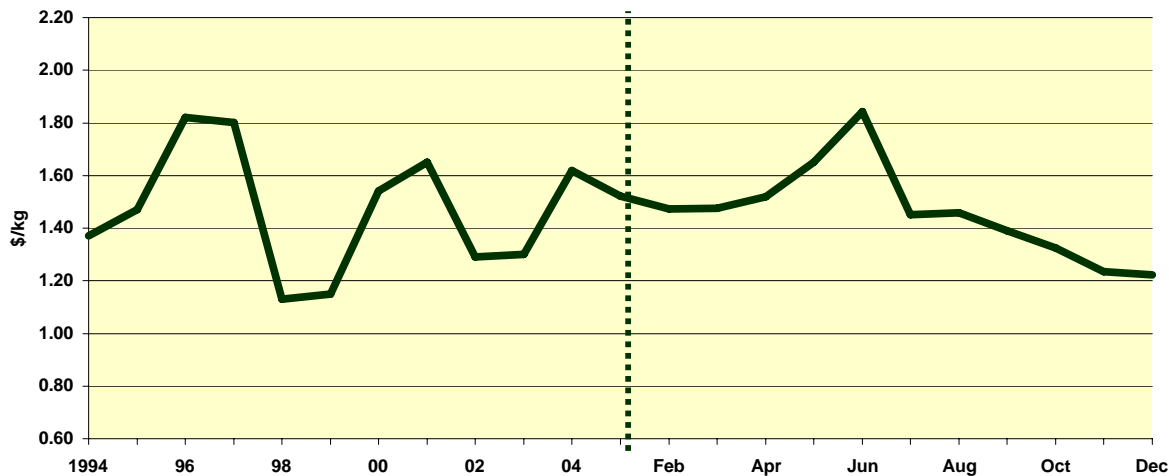
Source: "Livestock Market Review", Agriculture and Agri-Food Canada; and Canfax

Table 61: Alberta Average Slaughter Hog Prices (Index 100), 1994-2005

	Annual Average Price	Monthly Average Price		
	\$/kg	2004	2005	
		\$/kg		
1994.....	1.37	Jan.....	1.15	1.52
1995.....	1.47	Feb.....	1.40	1.47
1996.....	1.82	Mar.....	1.50	1.47
1997.....	1.80	Apr.....	1.51	1.52
1998.....	1.13	May.....	1.88	1.65
1999.....	1.15	Jun.....	1.88	1.84
2000.....	1.54	Jul.....	1.85	1.45
2001.....	1.65	Aug.....	1.81	1.46
2002.....	1.29	Sep.....	1.69	1.39
2003.....	1.30	Oct.....	1.64	1.33
2004.....	1.62	Nov.....	1.58	1.23
2005.....	1.46	Dec.....	1.57	1.22

Note: Weighted average prices up until 1998.

Fig. 30 Alberta Average Slaughter Hog Prices (Index 100), 1994-2005



Source: "Livestock Market Review", Agriculture and Agri-Food Canada; and Alberta Agriculture, Food and Rural Development

Table 62: Central Alberta Average Market Lamb Prices (95-115 lbs) (1),
1994-2005

	Annual Average Price	Monthly Average Price	
	\$/100 Lbs.	2004	2005
		\$/100 Lbs.	
1994.....	87.66	Jan.....	72.00 93.60
1995.....	91.05	Feb.....	69.60 104.40
1996.....	108.20	Mar.....	72.00 118.08
1997.....	108.11	Apr.....	84.60 115.20
1998.....	94.52	May.....	91.20 114.00
1999.....	93.88	Jun.....	88.80 102.24
2000.....	99.40	Jul.....	88.80 96.60
2001.....	86.89	Aug.....	88.80 106.08
2002.....	88.40	Sep.....	86.40 115.20
2003.....	89.95	Oct.....	85.44 115.20
2004.....	83.18	Nov.....	84.48 115.68
2005.....	109.69	Dec.....	86.02 120.00

Note: Plant price converted to live weight equivalent.

(1) Simple average prices.

Source: Sunterra Meats; Alberta Agriculture, Food, and Rural Development

Table 63: Alberta Sheep and Lamb Marketings (1), 1994-2005

	Sheep	Lambs	Total Sheep and Lambs
	Head		
1994.....	5,190	62,785	67,975
1995.....	1,690	55,872	57,562
1996 (2).....	-	-	64,900 (est)
1997 (2).....	-	-	59,900 (est)
1998 (2).....	-	-	57,200 (est)
1999 (2).....	-	-	55,000 (est)
2000 (2).....	-	-	61,800 (est)
2001 (2).....	-	-	71,400 (est)
2002 (2).....	-	-	78,600 (est)
2003r (2).....	-	-	87,300 (est)
2004 (2).....	-	-	105,300 (est)
2005 (2).....	-	-	98,200 (est)

(1) These data represent sheep and lambs of Alberta origin slaughtered in Alberta and other Canadian provinces.

(2) Estimate from Alberta's sheep and lamb balance sheets.

Source: "Livestock Market Review", Agriculture and Agri-Food Canada; and Statistics Canada

Table 64: Alberta Brand Inspection Record of Live Cattle and Calf Shipments Out-of-Province (1), 2004 and 2005

	B.C.		Saskatchewan		Manitoba		Ontario		Quebec	
	2004	2005p	2004	2005p	2004	2005p	2004	2005p	2004	2005p
Head										
Feeders.....	12,349	21,500	34,303	60,088	2,330	1,106	35,509	33,211	10,283	9,187
Bulls.....	374	263	2,643	1,076	30	59	245	77	43	425
Cows.....	459	1,407	5,788	3,723	42	189	96	70	66	300
Heifers.....	3,406	2,111	5,347	10,228	96	18	5,874	3,394	1,951	338
Steers.....	7,598	5,577	15,718	20,539	1,887	550	20,917	17,205	7,351	3,488
Calves.....	413	1,719	4,620	16,431	275	104	8,377	10,628	872	2,046
Yearlings.....	99	10,423	187	8,091	0	186	0	1,837	0	2,590
Slaughter.....	2,754	6,286	57,814	79,778	284	360	9,417	6,237	3,827	4,782
Bulls.....	735	1,057	3,405	9,335	167	87	255	568	1,190	2,111
Cows.....	1,266	4,397	1,020	42,018	111	133	372	410	2,520	2,590
Heifers.....	174	92	14,104	8,101	4	5	1,404	2,061	97	40
Steers.....	449	247	37,540	17,802	2	135	7,235	2,990	8	32
Calves.....	12	32	0	218	0	0	110	0	12	9
Yearlings.....	118	461	1,745	2,304	0	0	41	208	0	0
Replacement.....	8,768	11,247	7,977	9,540	1,854	957	652	282	244	244
Bulls.....	628	731	828	872	100	60	20	50	11	22
Cows.....	4,065	5,996	3,947	5,751	919	637	274	97	71	60
Heifers.....	1,693	2,353	2,136	1,253	378	97	213	110	133	93
Calves.....	2,382	2,167	1,066	1,664	457	163	145	25	29	69
Yearlings.....	0	0	0	0	0	0	0	0	0	0
All Classes.....	23,871	39,033	100,094	149,406	4,468	2,423	45,578	39,730	14,354	14,213

	Maritimes		United States		Other		Total	
	2004	2005p	2004	2005p	2004	2005p	2004	2005p
Head								
Feeders.....	0	227	0	19,957	94	0	94,868	145,276
Bulls.....	0	0	0	0	0	0	3,335	1,900
Cows.....	0	0	0	62	0	0	6,451	5,751
Heifers.....	0	0	0	11,169	0	0	16,674	27,258
Steers.....	0	0	0	6,603	0	0	53,471	53,962
Calves.....	0	0	0	276	94	0	14,651	31,204
Yearlings.....	0	227	0	1,847	0	0	286	25,201
Slaughter.....	0	0	0	227,208	28	41	74,124	324,692
Bulls.....	0	0	0	9	28	0	5,780	13,167
Cows.....	0	0	0	0	0	0	5,289	49,548
Heifers.....	0	0	0	81,420	0	0	15,783	91,719
Steers.....	0	0	0	143,940	0	41	45,234	165,187
Calves.....	0	0	0	0	0	0	134	259
Yearlings.....	0	0	0	1,839	0	0	1,904	4,812
Replacement.....	31	107	0	0	9	0	19,535	22,377
Bulls.....	3	6	0	0	9	0	1,599	1,741
Cows.....	0	0	0	0	0	0	9,276	12,541
Heifers.....	28	100	0	0	0	0	4,581	4,006
Calves.....	0	1	0	0	0	0	4,079	4,089
Yearlings.....	0	0	0	0	0	0	0	0
All Classes.....	31	334	0	247,165	131	41	188,527	492,345

(1) Shipments exclude unclassified animals.

Source: Livestock Identification Services Ltd.

Table 65: Registrations and Sales of Registered Horses in Alberta, 1996-2005

	1996	1997	1998	1999	2000	2001	2002	2003	2004r	2005p
Registration by Breed Association - Head										
Arabian.....	600	563	522	391	394	375	467	283	246	257
Appaloosa.....	430	442	402	353	316	226	198	170	126	207
Morgan.....	235	231	264	200	306	290	295	250	225	248
Paint.....	1,298	1,649	1,805	1,843	1,824	1,489	1,382	1,095	1,075	855
Quarter Horse.....	3,812	4,046	4,770	5,753	6,265	6,287	6,516	6,162	6,133	5,836
Standardbred.....	348	332	314	334	424	324	272	298	309	310
Thoroughbred.....	524	498	493	533	480	490	478	498	492	495
Draft.....	326	309	327	284	261	247	307	250	201	228
Other (1).....	574	520	664	709	657	954	843	658	678	764
Total.....	8,147	8,590	9,561	10,400	10,927	10,682	10,758	9,664	9,485	9,200
Ownership Transfers - Head										
Arabian (2).....	574	566	538	470	539	392	433	268	293	328
Appaloosa.....	387	358	323	344	305	269	219	293	144	125
Morgan.....	277	243	232	363	383	387	439	388	332	320
Paint.....	-	-	-	-	-	-	-	-	-	-
Quarter Horse.....	4,907	4,618	5,492	5,495	5,959	5,984	5,971	5,736	5,431	5,506
Standardbred.....	-	-	-	-	-	-	-	-	-	-
Thoroughbred.....	-	-	-	-	-	-	-	-	-	-
Draft.....	358	270	391	359	262	281	306	250	192	226
Other (1).....	411	628	788	934	746	1,189	1,110	912	807	944
Total (3).....	6,914	6,683	7,764	7,965	8,194	8,502	8,478	7,847	7,199	7,449

(1) Other registrations and transfers include the addition of donkey data in 2001.

(2) Part breed transfers are not recorded (except when made at time of registration).

(3) Transfer totals do not include Standardbreds, Thoroughbreds and Paints.

Source: Forage and Horse Branch, Livestock Development Division of Alberta Agriculture, Food and Rural Development; and Breed Registries

Table 66: Alberta Horse Meat Exports by Destination, 1996-2005

	1996	1997	1998	1999	2000	2001	2002	2003	2004	2005
Quantity - tonnes										
Europe.....	6,055	7,246	7,323	6,121	5,504	7,180	5,989	5,410	5,300	4,793
Japan.....	2,477	5,110	5,081	4,846	3,947	3,595	2,222	2,283	3,041	3,245
United States.....	54	23	0	0	40	86	18	21	0	0
Other Countries.....	14	254	106	0	377	383	356	1,413	1,522	1,728
Total.....	8,600	12,633	12,510	10,967	9,867	11,244	8,585	9,127	9,863	9,766
Value - \$'000										
Europe.....	37,134	41,492	42,744	39,076	33,829	47,421	38,043	31,307	31,366	28,488
Japan.....	10,535	17,466	19,452	19,347	17,192	17,095	12,952	11,347	13,825	16,752
United States.....	11	23	0	0	44	189	18	19	0	0
Other Countries.....	97	407	305	0	612	744	626	1,895	2,675	3,067
Total.....	47,777	59,388	62,501	58,422	51,677	65,450	51,639	44,568	47,866	48,307

Source: Statistics Canada; and Statistics and Data Development Unit of Alberta Agriculture, Food and Rural Development

Table 67: Pregnant Mare Urine (PMU) Statistics, Alberta, 1988-89 to 2005-06

	Mares	Farms	Gross Revenue
	Number	Number	\$'000
1988-89.....	2,869	27	3,262
1989-90.....	3,297	27	3,846
1990-91.....	3,416	26	4,472
1991-92.....	5,725	37	6,975
1992-93.....	9,674	64	11,969
1993-94.....	9,571	66	12,475
1994-95.....	9,580	66	13,556
1995-96.....	8,832	66	13,646
1996-97.....	8,042	64	12,950
1997-98.....	8,219	61	11,033
1998-99.....	7,465	60	12,128
1999-00.....	6,108	59	12,685
2000-01.....	6,280	59	14,050
2001-02.....	7,500	56	15,600
2002-03.....	7,700	56	16,533
2003-04.....	6,042	54	14,853
2004-05.....	1,478	19	3,946
2005-06p.....	0	0	0

Source: Forage and Horse Branch, Livestock Development Division of Alberta Agriculture, Food and Rural Development

Table 68: Alberta Dairy Industry, 2000-2005

	1999-00	2000-01	2001-02	2002-03	2003-04r	2004-05p
Number of Milk Producers.....	901	853	817	784	754	723
Number of Cream Producers.....	2	2	1	1	1	0
Milk Production ('000 litres).....	630,944	629,690	639,079	623,380	635,065	637,044
Cream Production (kg).....	4,166	3,026	3,060	3,304	2,744	0
Average Daily Shipment Per						
Milk Producer (litres).....	1,919	2,022	2,143	2,178	2,308	2,414
	2000	2001	2002r	2003r	2004r	2005p
	Calendar Year - \$'000					
Farm Cash Receipts						
Dairy Products.....	318,454	348,378	366,827	384,704	382,979	398,675
Dairy Products - Manufacturing Activity						
Value of Manufacturing Shipments.....	828,852	892,453	x	1,011,723	1,050,285	1,326,129
International Exports of Dairy Products						
Total	7,005	11,593	10,867	10,200	5,312	3,113
To Mexico (1).....	5,056	9,588	9,375	0	0	0
To Asia-Pacific (2).....	1,839	1,704	661	9,370	5,095	176
To Other Countries.....	110	301	831	830	217	2,937

(1) The principal dairy commodity exported to Mexico is milk powder.

(2) Asia Pacific countries including: Vietnam, Philippines, Thailand, China, Japan, Taiwan, South Korea, Bangladesh, Sri Lanka, Singapore, and Indonesia.

Note: Use preliminary numbers (p) with caution.

Source: Alberta Dairy Board; Alberta Milk; Statistics Canada; and Statistics and Data Development Unit of Alberta Agriculture, Food and Rural Development

Table 69: Output and Value of Poultry Meats, Alberta, 1994-2005

	Total Production		Consumed by Producers		Sold	
	tonnes	\$'000	tonnes	\$'000	tonnes	\$'000
Stewing Hen and Chicken						
1994.....	60,770	92,925	579	821	60,191	92,104
1995.....	63,495	91,713	562	792	62,933	90,921
1996.....	63,710	102,932	565	905	63,145	102,027
1997.....	67,518	107,257	591	938	66,927	106,319
1998.....	74,655	115,688	608	940	74,046	114,747
1999.....	79,748	114,646	608	874	79,140	113,772
2000.....	82,732	118,861	293	417	82,439	118,444
2001.....	86,906	133,015	323	509	86,583	132,506
2002.....	84,306	122,270	273	395	84,033	121,874
2003r.....	82,097	124,493	265	402	81,832	124,090
2004r.....	89,195	138,452	267	411	88,928	138,041
2005p.....	87,496	141,959	265	422	87,231	141,537
Turkey						
1994.....	11,582	19,840	41	70	11,541	19,769
1995.....	12,435	20,771	38	64	12,397	20,707
1996.....	11,686	21,977	37	69	11,649	21,908
1997.....	11,754	21,803	38	71	11,716	21,732
1998.....	11,314	20,772	39	72	11,275	20,700
1999.....	11,694	20,695	39	69	11,655	20,626
2000.....	11,408	20,265	39	69	11,369	20,196
2001.....	13,127	23,790	38	69	13,089	23,721
2002.....	11,764	21,450	38	69	11,726	21,381
2003r.....	13,191	24,242	34	62	13,157	24,180
2004r.....	12,129	23,209	33	62	12,096	23,147
2005p.....	13,117	24,033	33	60	13,085	23,973
Total Stewing Hen, Chicken and Turkey						
1994.....	72,352	112,765	620	891	71,732	111,873
1995.....	75,930	112,484	600	856	75,330	111,628
1996.....	75,396	124,909	602	974	74,794	123,935
1997.....	79,272	129,060	629	1,009	78,643	128,051
1998.....	85,969	136,460	647	1,012	85,321	135,447
1999.....	91,442	135,341	647	943	90,795	134,398
2000.....	94,140	139,126	332	486	93,808	138,640
2001.....	100,033	156,805	361	578	99,672	156,227
2002.....	96,069	143,720	310	464	95,759	143,256
2003r.....	95,288	148,735	299	471	94,989	148,270
2004r.....	101,324	161,661	300	473	101,024	161,188
2005p.....	100,613	165,992	298	482	100,316	165,510

Source: Statistics Canada Cat. No. 23-015 XIB, "Poultry and Egg Statistics"

Table 70: Production, Disposition and Value of Eggs, Alberta, 1994-2005

	Production		Disposition						
	Average No. of Layers	Dozens	Sold (Includes Exports)				Leakers & Rejects	Producer	
			For Consumption	Value	For Hatching	Value		Use for Consump.	Value
	'000	'000	'000 doz.	\$'000	'000 doz.	\$'000	'000 doz.	'000 doz.	\$'000
1994.....	1,976	41,263	34,567	33,359	5,447	16,101	805	444	460
1995.....	1,989	41,782	34,964	35,725	5,546	16,392	816	456	491
1996.....	1,953	40,728	33,906	37,764	5,561	16,437	793	468	508
1997.....	1,952	40,369	33,570	35,467	5,546	16,392	785	468	494
1998.....	1,987	40,844	34,022	35,309	5,546	16,392	796	480	510
1999.....	1,998	40,735	33,927	35,223	5,546	16,392	794	468	525
2000.....	2,157	41,553	33,390	34,948	6,345	22,200	810	468	585
2001.....	2,244	43,608	35,658	38,213	6,607	23,613	851	492	625
2002.....	2,244	42,599	34,809	40,523	6,563	23,349	831	396	511
2003.....	2,235	43,178	35,445	41,006	6,493	23,544	844	396	508
2004r.....	2,299	44,343	36,413	44,322	6,670	24,703	864	396	527
2005p Jan.....	2,348	3,933	3,256	3,555	567	2,145	77	33	40
Feb.....	2,313	3,512	2,906	3,170	505	1,909	68	33	40
Mar.....	2,306	3,846	3,170	3,471	568	2,147	75	33	41
Apr.....	2,308	3,685	3,059	3,344	521	1,970	72	33	41
May.....	2,342	3,920	3,211	3,511	600	2,270	76	33	41
Jun.....	2,357	3,755	3,103	3,393	546	1,947	73	33	41
Jul.....	2,358	3,896	3,176	3,478	611	2,181	76	33	41
Aug.....	2,388	3,863	3,185	3,479	570	2,036	75	33	41
Sep.....	2,359	3,730	3,079	3,370	545	1,947	73	33	39
Oct.....	2,341	3,840	3,202	3,527	530	1,894	75	33	41
Nov.....	2,364	3,814	3,163	3,482	544	1,942	74	33	41
Dec.....	2,371	3,974	3,326	3,658	538	1,920	77	33	41
Annual.....	2,346	45,769	37,836	41,438	6,646	24,308	891	396	488

Source: Statistics Canada Cat. No. 23-015 XIB, "Poultry and Egg Statistics"

Table 71: Chickens Slaughtered in Registered Stations, Alberta, 1993-2005

	Under 1 kg	1 to 2 kg	2 kg and Over	Total
	Eviscerated Weight - tonnes			
1993.....	1,279	48,886	2,431	52,596
1994.....	1,329	56,141	2,420	59,890
1995.....	784	59,938	2,126	62,848
1996.....	613	59,597	1,869	62,079
1997.....	750	65,674	1,824	68,247
1998.....	325	70,344	1,563	72,232
1999.....	54	77,335	683	78,072
2000.....	30	79,542	302	79,874
2001.....	8	84,424	341	84,773
2002.....	7	81,680	561	82,248
2003.....	5	79,419	561	79,985
2004r.....	8	93,018	57	93,083
2005p.....	19	85,287	30	85,337

Source: Agriculture and Agri-Food Canada

Table 72: Alberta Game Farming Industry, 1996-2005

	Licenced Game Farms	Farms With Elk	Elk on Farms	Farms With Deer	Whitetail Deer on Farms	Mule Deer on Farms	Reindeer on Farms
	Number						
1996.....	310	227	12,173	91	2,920	435	-
1997.....	400	273	15,449	136	3,717	360	-
1998.....	459	335	19,638	155	4,884	282	66
1999.....	513	377	25,914	168	6,499	319	159
2000.....	575	424	33,265	182	8,601	323	191
2001.....	601	451	42,021	181	11,057	391	251
2002.....	605	460	48,186	188	12,152	442	289
2003.....	602	453	45,963	172	9,663	408	317
2004.....	535	426	41,631	138	8,400	403	318
2005p.....	505	391	36,541	123	8,026	317	329

Source: Diversified Livestock Branch, Livestock Development Division of Alberta Agriculture, Food and Rural Development