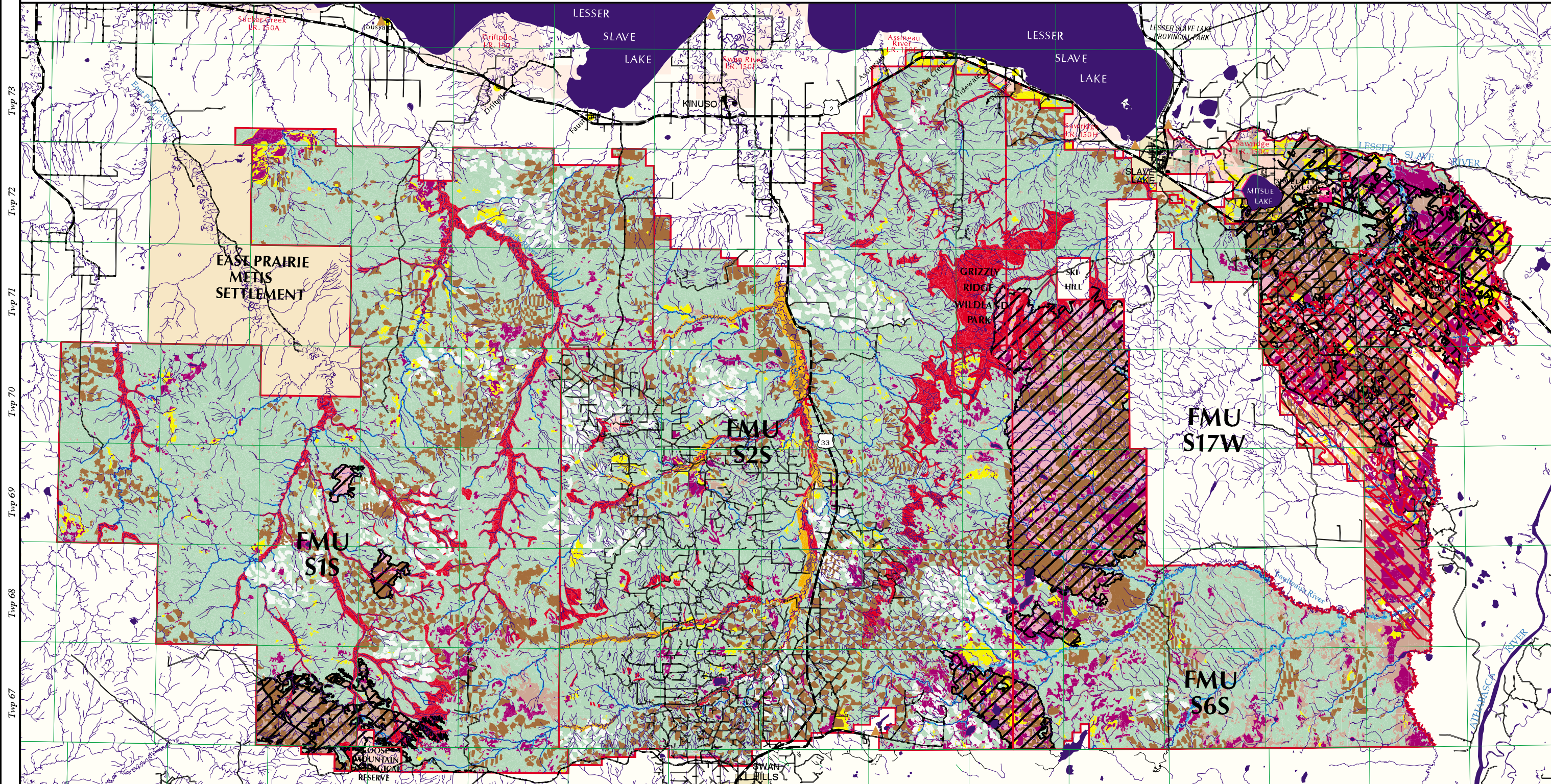




# LANDBASE CATEGORIES

Scale = 1:375 000



COPYRIGHT © 2002 SLAVE LAKE PULP  
ANY USE, DUPLICATION OR DISTRIBUTION  
WITHOUT PERMISSION IS PROHIBITED

### PLANIMETRIC LEGEND

- Village/Hamlet
- Campgrounds
- Paved Roads
- Gravel Roads
- Tertiary Roads
- Perennial Stream
- Intermittent Stream
- Indefinite Stream
- Lakes/Major Rivers
- Towns
- Parks
- First Nations Reserves
- Metis Settlements

### LANDBASE CATEGORIES

- Excluded Dispositions
- Inoperable Area
- Fish and Wildlife
- 100m Lake Buffer
- 60m River Buffer
- 30m Stream Buffer
- Natural Non-Forested
- Anthropogenic Non-Forested
- Merchantability Deletion
- Unproductive TPR Rating
- Unsalvageable Burn (1998)
- Unsalvageable Burn (Chisholm 2001)
- Net Merchantable Area
- Grazing Leases
- Harvested Blocks (Pre May 1999)
- Proposed Blocks (Post May 1999)
- Chisholm Salvage Blocks
- 1998 Burn Boundary
- Chisholm Burn Boundary

Map Version 1.00  
Map Date May 09, 2002  
Silvacom Ref #: H-018  
Map File:  
./maps\_new/nlb\_map



# Slave Lake Pulp Corporation

## 2000 Detailed Forest Management Plan

### H.2 Growth and Yield Analysis

#### H.2.1 Yield Curve Development

Gross yield curves for the Slave Lake Pulp management area were developed during the DFMP planning process. Fixed area plots from the Slave Lake Pulp and Blue Ridge Lumber management areas were pooled in the analysis in order to strengthen volume estimates across natural regions. All trees were compiled to the 15/10-utilization standard (i.e. 15cm minimum stump diameter 10cm minimum top diameter). A summary of the FMA stratification procedure is outlined in Figure 8-3. The yield curves used in the timber supply analysis were reviewed and approved by LFD on July 19, 2001. An area-weighted composite yield curve for the FMA is presented in Figure 8-4.

**Figure H-3: Yield Stratification**

