

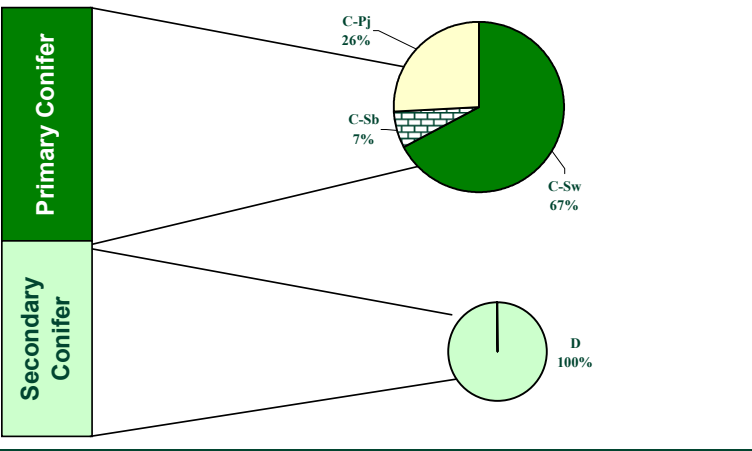
The Alberta-Pacific FMA Area Timber Supply Analysis

FMU S7



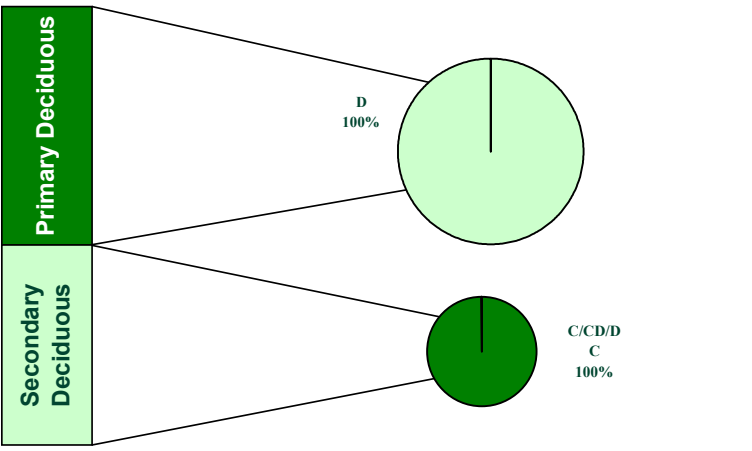
| Summary Category (60-Year Average) | Prim Coniferous | Prim Deciduous | Total | | |
|------------------------------------|-----------------|----------------|---------|------|---------|
| Net Harvestable Landbase (ha) | - | - | 57,339 | | |
| LRSY (m³/yr) | 39,684 | 111,025 | 150,708 | | |
| Woodstock™ Aspatial AAC (m³/yr) | 28,484 | 89,053 | 117,536 | | |
| Stanley Spatial AAC - (m³/yr) | 27,578 | 97% | 89,029 | 100% | 116,607 |
| Stand Retention Deduction | 0% | 5% | - | | |
| Cull Deduction | 2% | 4% | - | | |

Woodstock/Stanley Spatial Coniferous Harvest Summary by Cover Type: 60-Year Average



| Primary Coniferous Average Harvest | |
|---------------------------------------|---------------|
| Cover Group | m³/yr |
| C-Sw | 18,523 |
| C-Sb | 1,904 |
| C-Pj | 7,150 |
| Total | 27,578 |
| Incidental Coniferous Average Harvest | |
| Cover Group | m³/yr |
| D | 17,101 |
| Total | 17,101 |
| Total Conifer Harvest | 44,679 |

Woodstock/Stanley Spatial Deciduous Harvest Summary by Cover Type: 60-Year Average

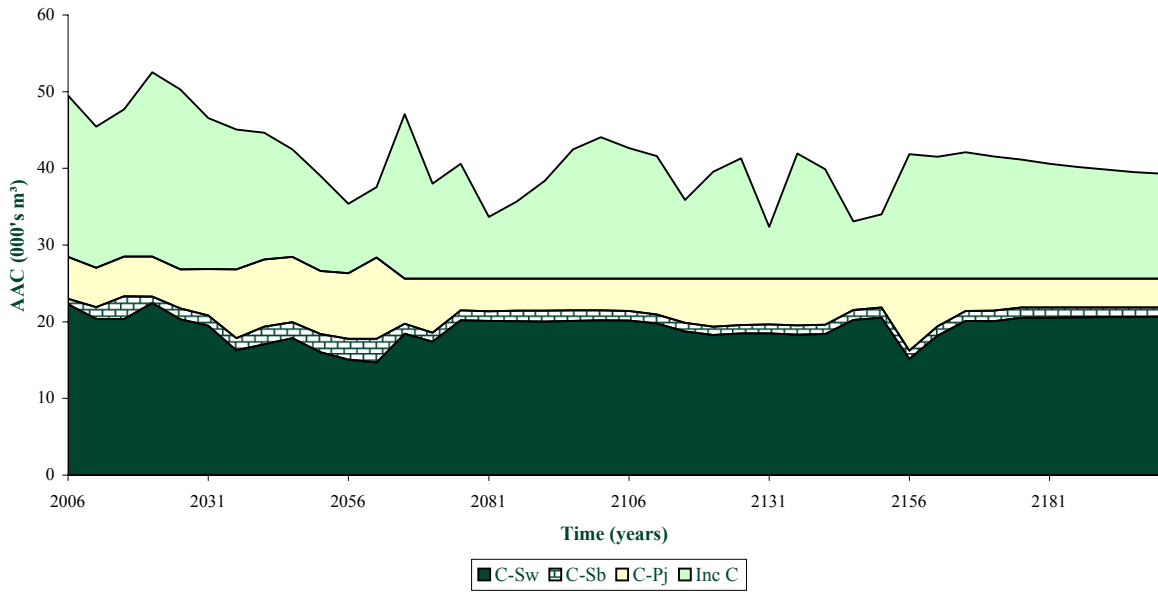


| Primary Deciduous Average Harvest | |
|--------------------------------------|----------------|
| Cover Group | m³/yr |
| D | 89,029 |
| Total | 89,029 |
| Incidental Deciduous Average Harvest | |
| Cover Group | m³/yr |
| C/CD/DC | 13,711 |
| Total | 13,711 |
| Total Deciduous Harvest | 102,740 |

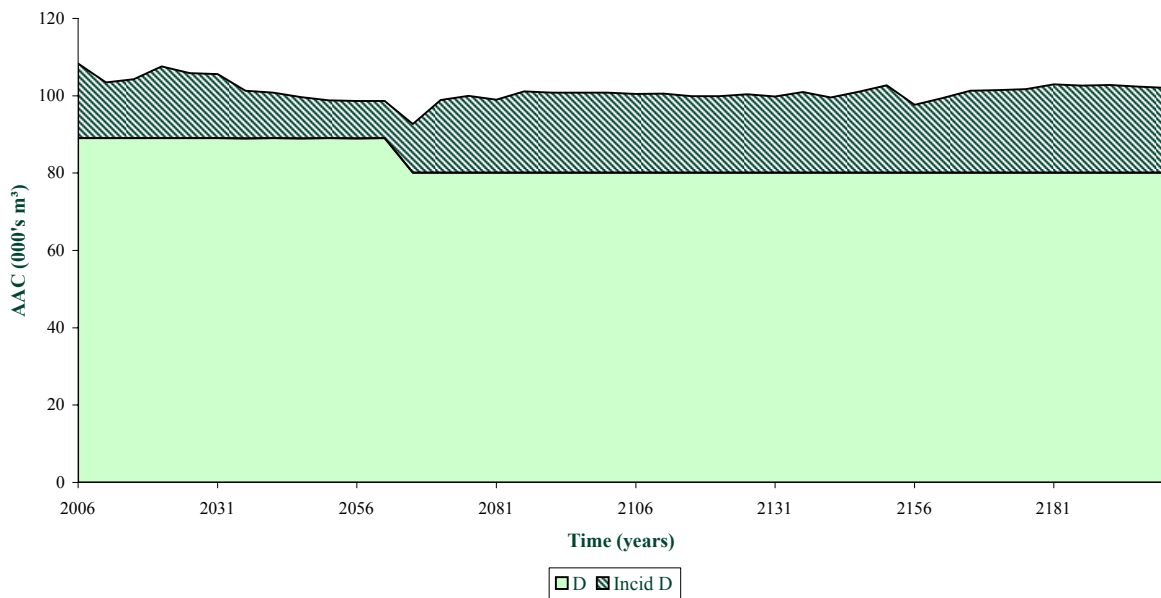
The Alberta-Pacific FMA Area Timber Supply Analysis FMU S7



FMA and Non FMA Coniferous AAC by Cover Type



FMA and Non-FMA Deciduous AAC by Cover Type

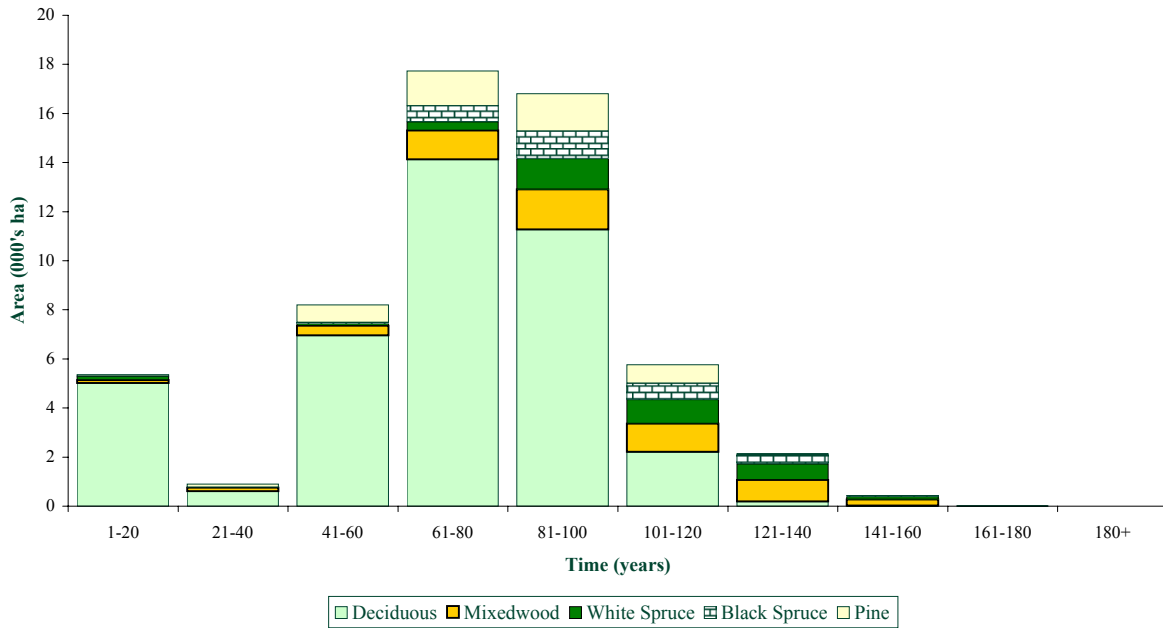


The Alberta-Pacific FMA Area Timber Supply Analysis

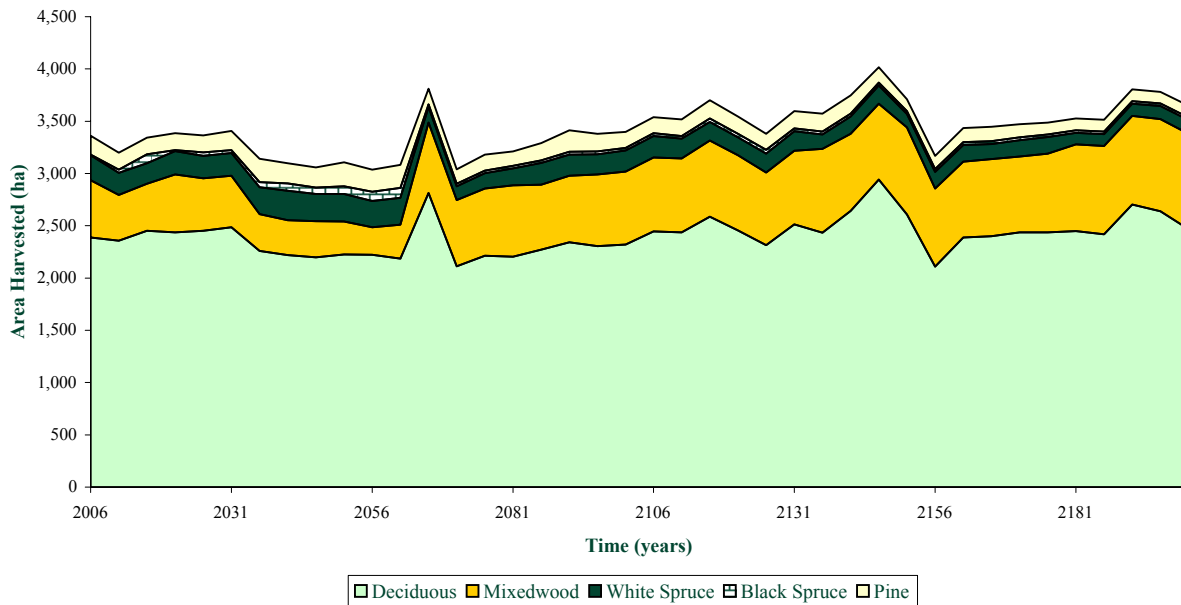
FMU S7



Initial Ageclass Structure by Cover Type



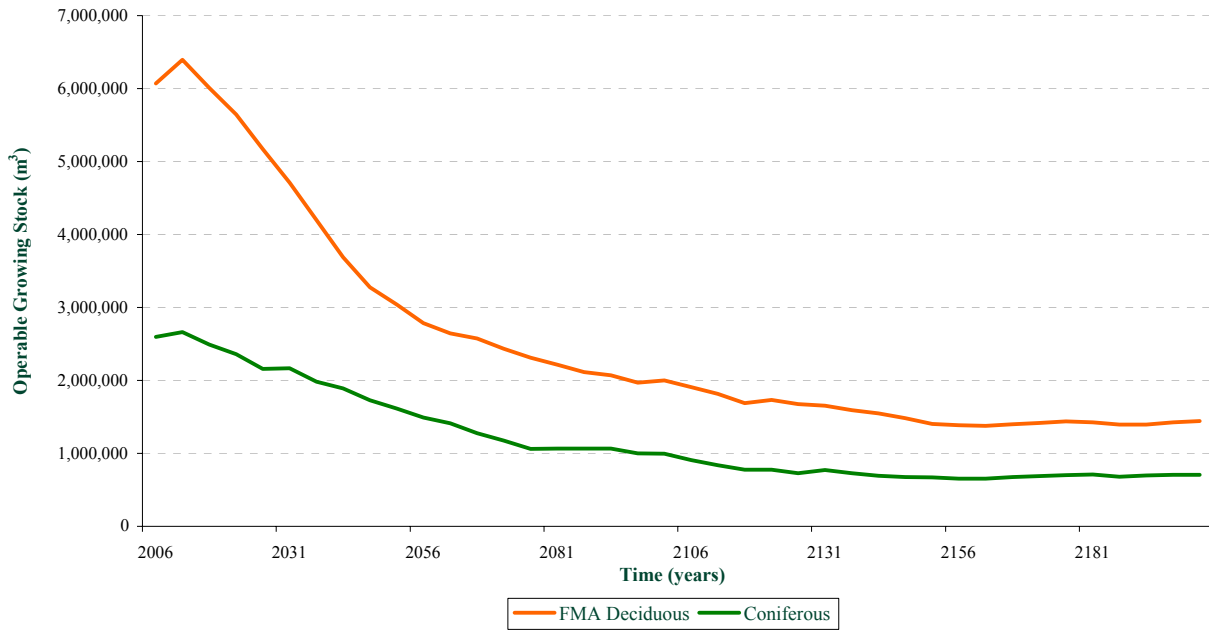
Area Harvested by Cover Type



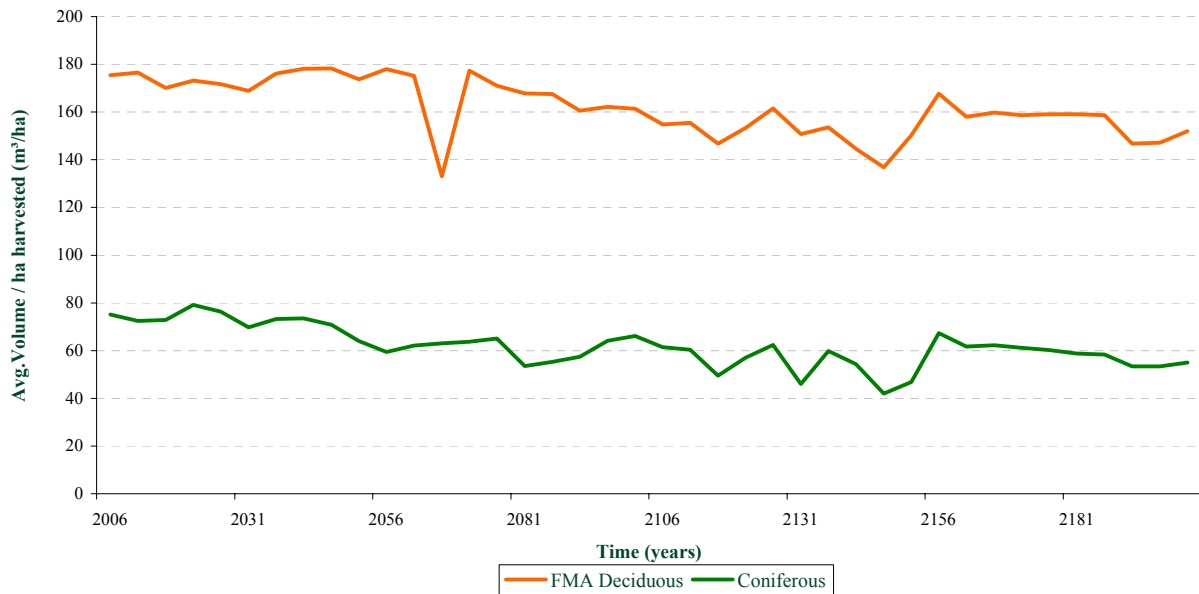
The Alberta-Pacific FMA Area Timber Supply Analysis FMU S7



Growing Stock Over Time



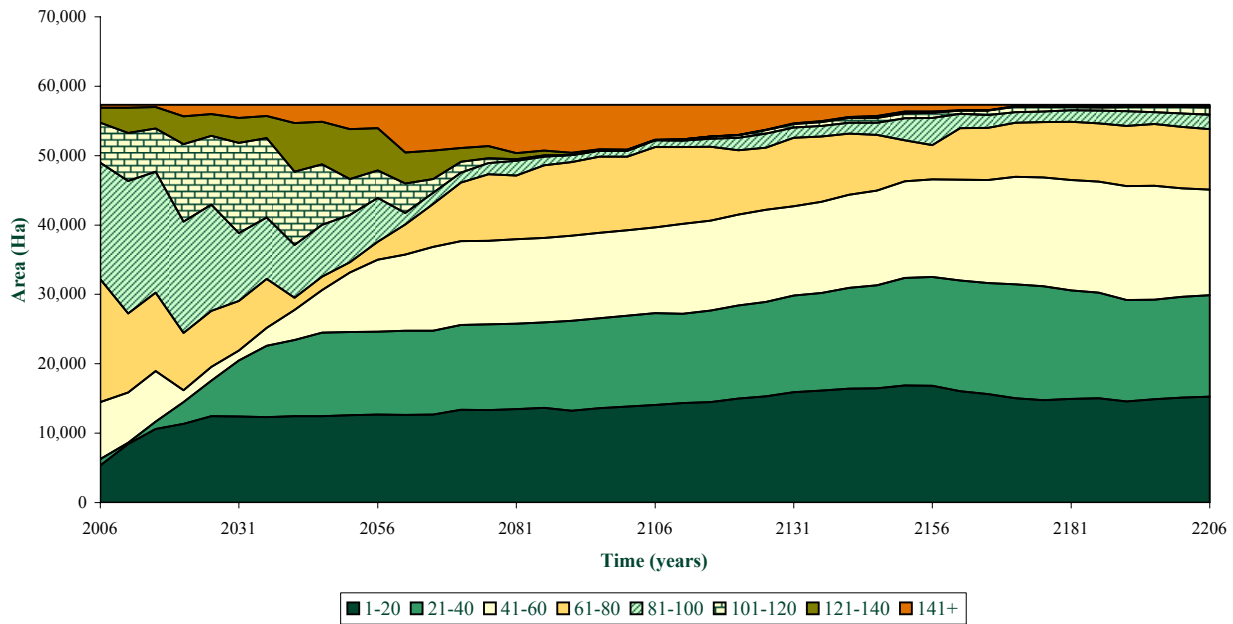
Average Volume Per Ha Harvested Over Time



The Alberta-Pacific FMA Area Timber Supply Analysis FMU S7



Age Class Distribution



Average Harvest Ages Over Time

| Species Group | Now | + 50 Years | + 100 Years | + 150 Years | + 200 Years |
|----------------------|-----|------------|-------------|-------------|-------------|
| Deciduous | 90 | 113 | 76 | 73 | 66 |
| Deciduous/Coniferous | 113 | 117 | 77 | 69 | 62 |
| Coniferous/Deciduous | 139 | 159 | 81 | 80 | 80 |
| White Spruce | 122 | 137 | 80 | 102 | 100 |
| Black Spruce | 109 | 129 | 165 | 120 | 120 |
| Pine | 103 | 117 | 89 | 105 | 105 |