

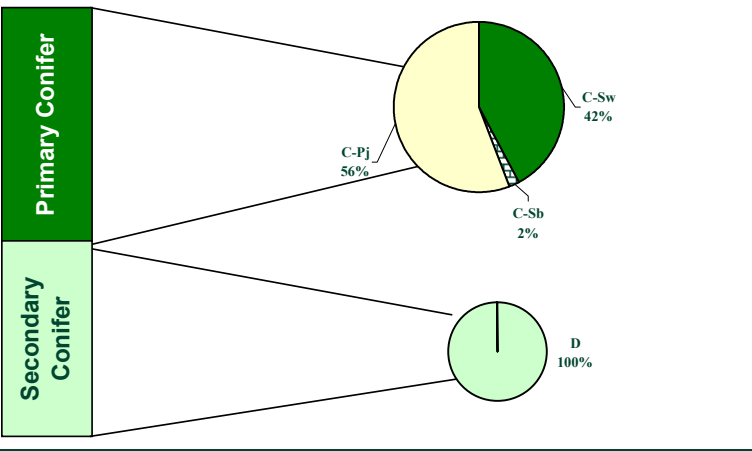
The Alberta-Pacific FMA Area Timber Supply Analysis

FMU S11



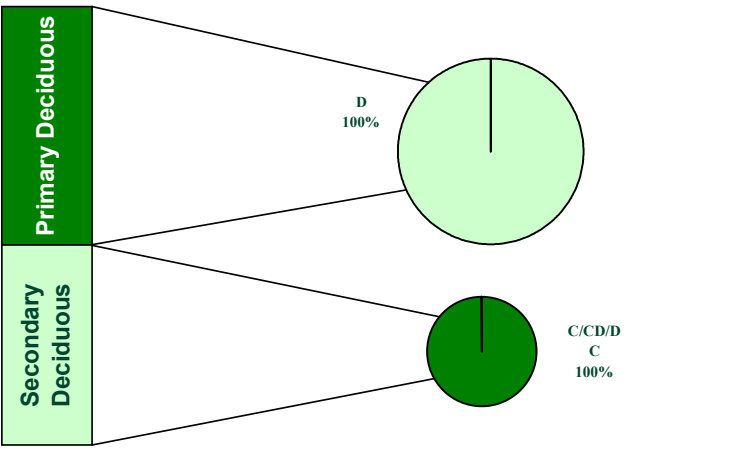
Summary Category (60-Year Average)	Prim Coniferous	Prim Deciduous	Total
Net Harvestable Landbase (ha)	-	-	151,507
LRSY (m³/yr)	121,390	196,930	318,320
Woodstock™ Aspatial AAC (m³/yr)	92,339	144,016	236,356
Stanley Spatial AAC - (m³/yr)	90,251	142,029	232,280
Stand Retention Deduction	0%	5%	-
Cull Deduction	2%	4%	-

Woodstock/Stanley Spatial Coniferous Harvest Summary by Cover Type: 60-Year Average



Primary Coniferous Average Harvest	
Cover Group	m³/yr
C-Sw	38,012
C-Sb	1,948
C-Pj	50,291
Total	90,251
Incidental Coniferous Average Harvest	
Cover Group	m³/yr
D	33,675
Total	33,675
Total Conifer Harvest	123,926

Woodstock/Stanley Spatial Deciduous Harvest Summary by Cover Type: 60-Year Average



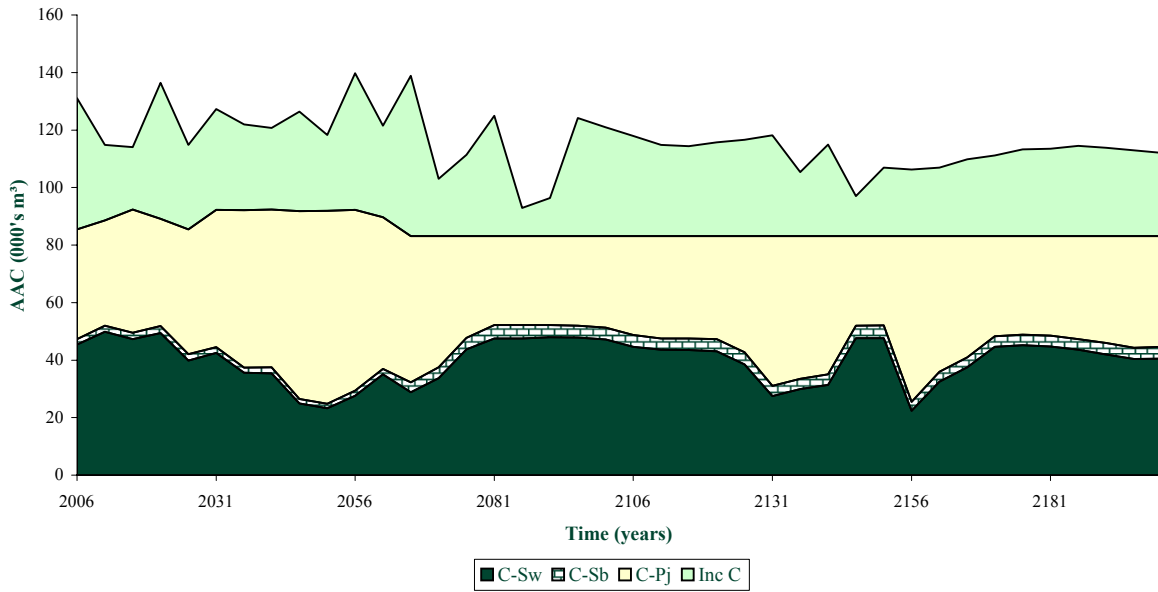
Primary Deciduous Average Harvest	
Cover Group	m³/yr
D	142,029
Total	142,029
Incidental Deciduous Average Harvest	
Cover Group	m³/yr
C/CD/DC	33,658
Total	33,658
Total Deciduous Harvest	175,686

The Alberta-Pacific FMA Area Timber Supply Analysis

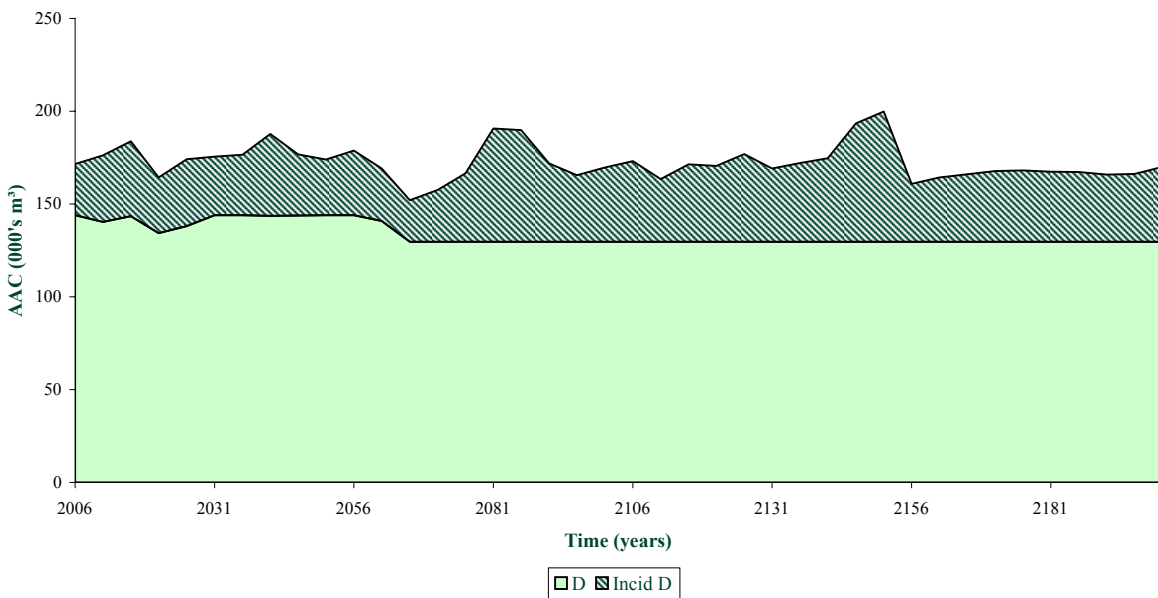
FMU S11



FMA and Non FMA Coniferous AAC by Cover Type



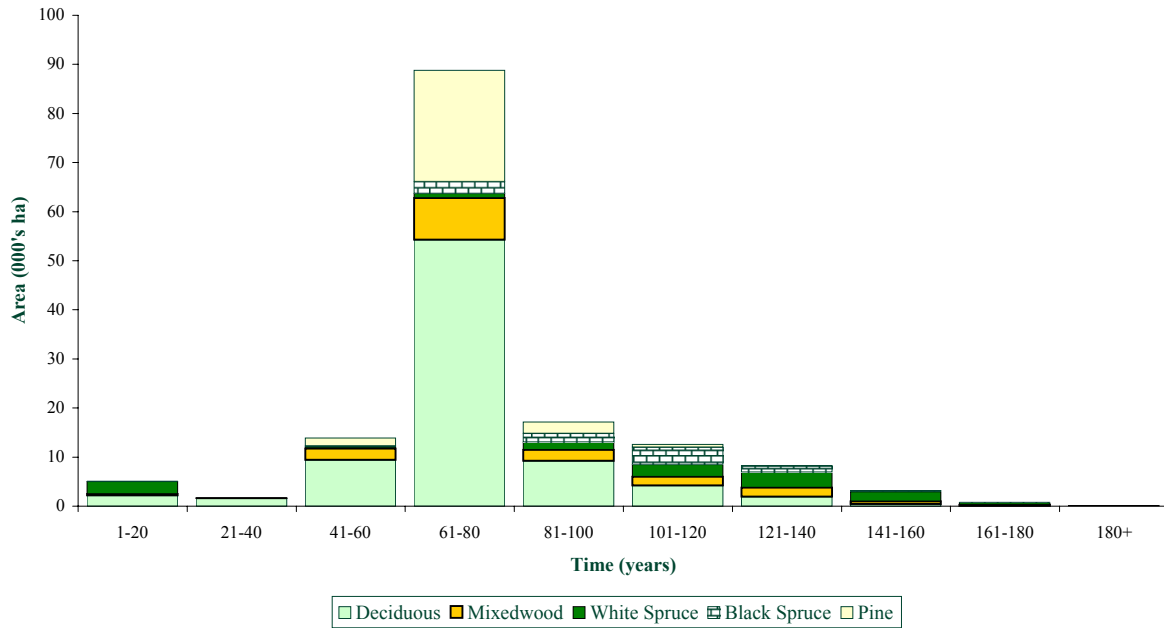
FMA and Non-FMA Deciduous AAC by Cover Type



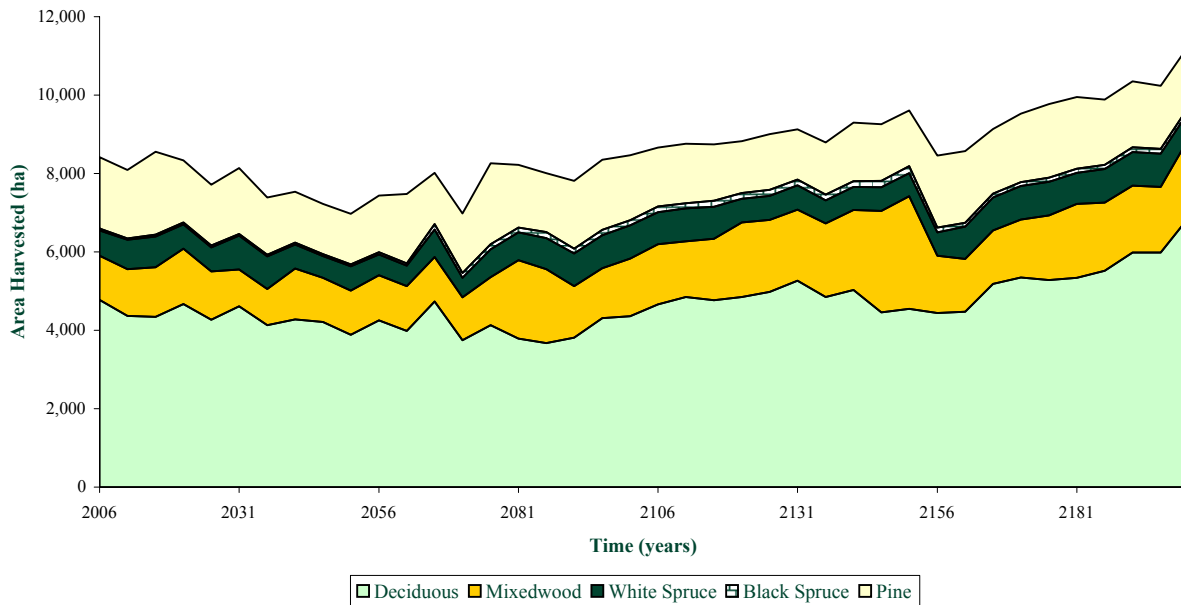
The Alberta-Pacific FMA Area Timber Supply Analysis FMU S11



Initial Ageclass Structure by Cover Type



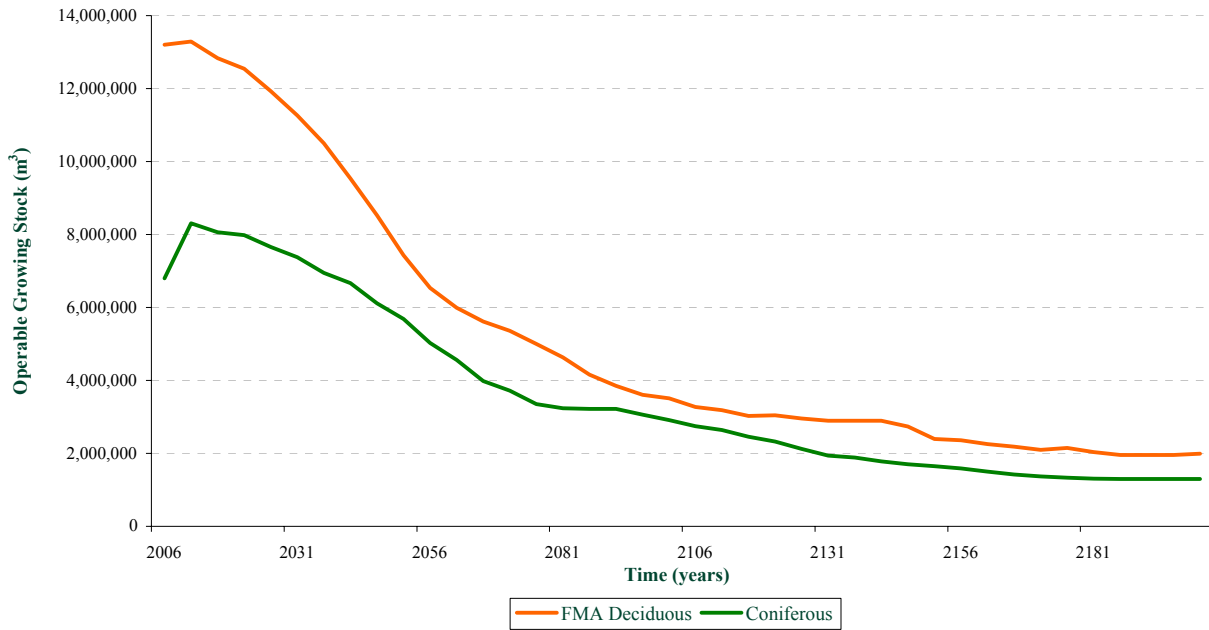
Area Harvested by Cover Type



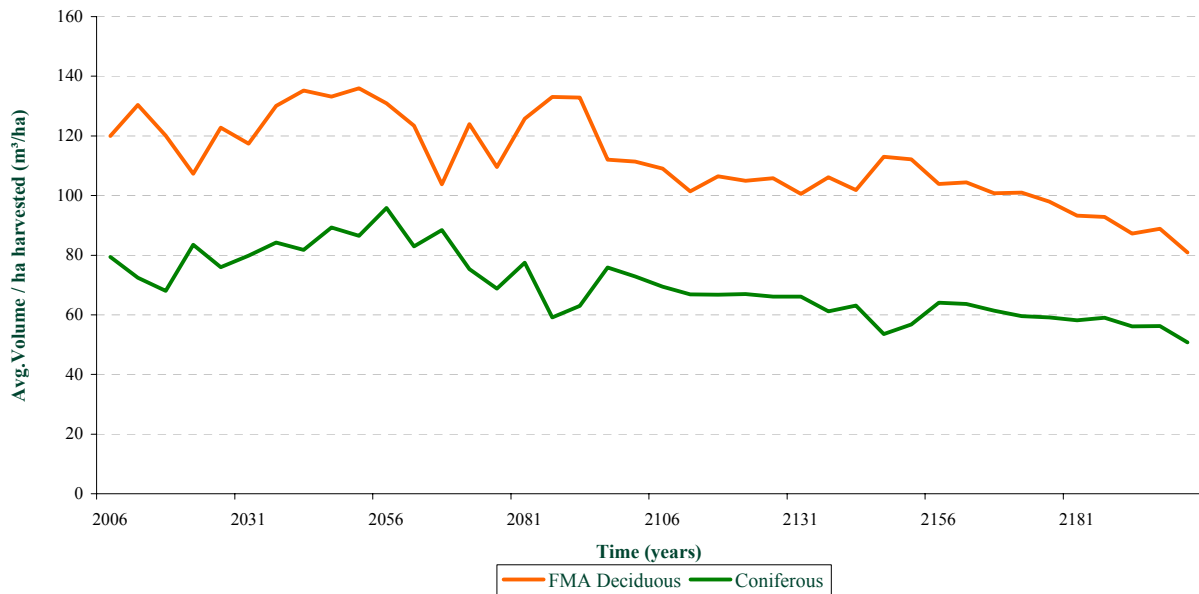
The Alberta-Pacific FMA Area Timber Supply Analysis FMU S11



Growing Stock Over Time



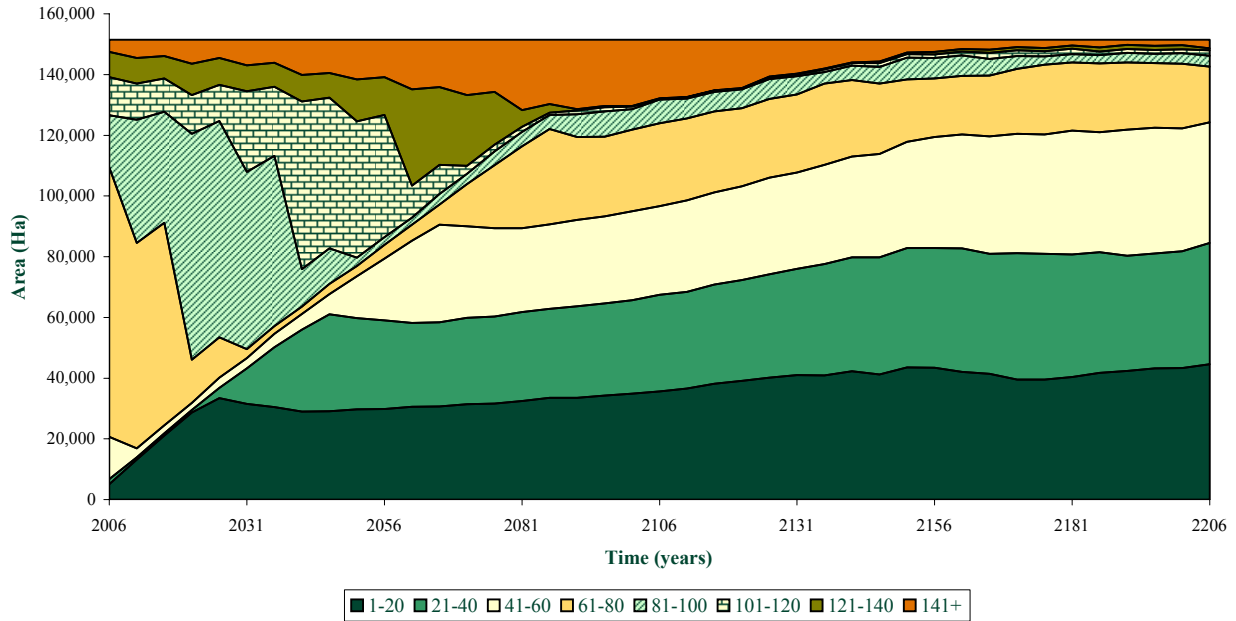
Average Volume Per Ha Harvested Over Time



The Alberta-Pacific FMA Area Timber Supply Analysis FMU S11



Age Class Distribution



Average Harvest Ages Over Time

Species Group	Now	+ 50 Years	+ 100 Years	+ 150 Years	+ 200 Years
Deciduous	105	119	81	72	66
Deciduous/Coniferous	110	115	76	63	65
Coniferous/Deciduous	141	117	106	0	81
White Spruce	141	175	82	82	80
Black Spruce	121	178	175	214	120
Pine	90	117	82	84	81