

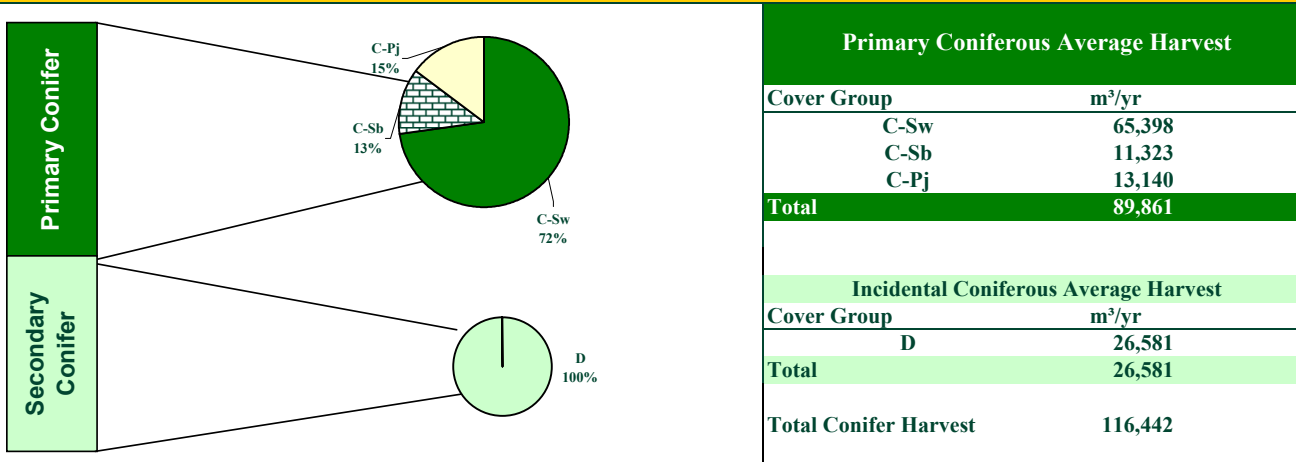
# The Alberta-Pacific FMA Area Timber Supply Analysis

## FMU L2

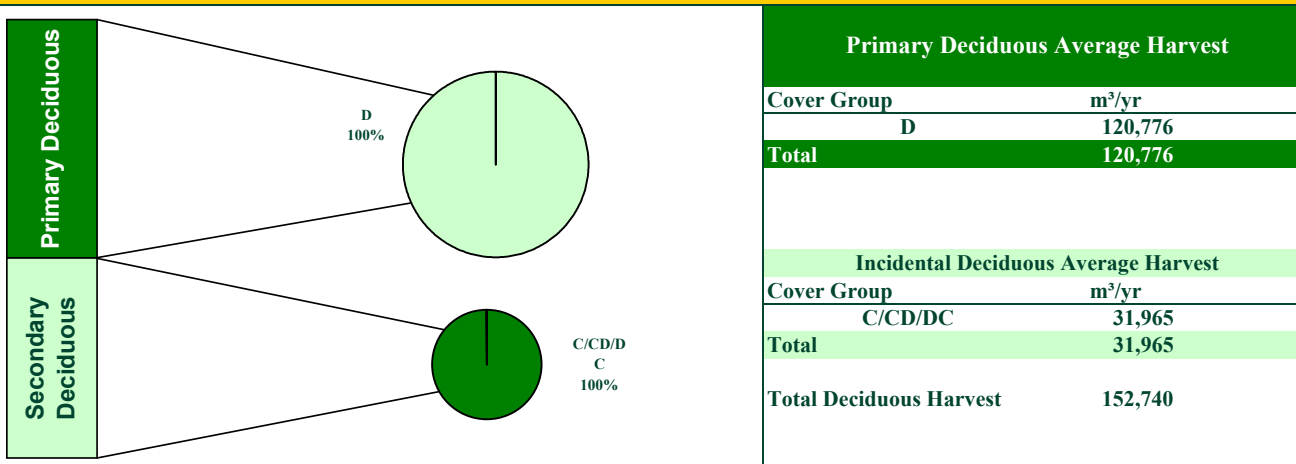


Summary Category (60-Year Average)	Prim Coniferous		Prim Deciduous		Total
Net Harvestable Landbase (ha)	-		-		122,956
LRSY (m³/yr)	113,158		186,321		299,479
Woodstock™ Aspatial AAC (m³/yr)	95,528		127,545		223,074
Stanley Spatial AAC - (m³/yr)	89,861	94%	120,776	95%	210,637
Stand Retention Deduction	0%		5%		-
Cull Deduction	2%		4%		-

### Woodstock/Stanley Spatial Coniferous Harvest Summary by Cover Type: 60-Year Average



### Woodstock/Stanley Spatial Deciduous Harvest Summary by Cover Type: 60-Year Average

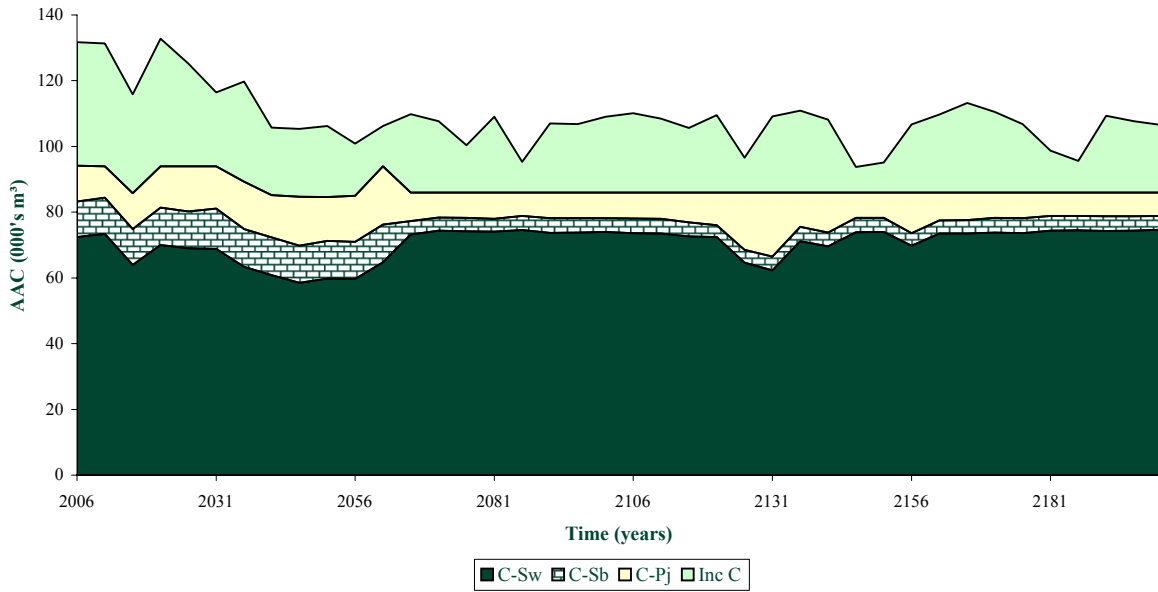


# The Alberta-Pacific FMA Area Timber Supply Analysis

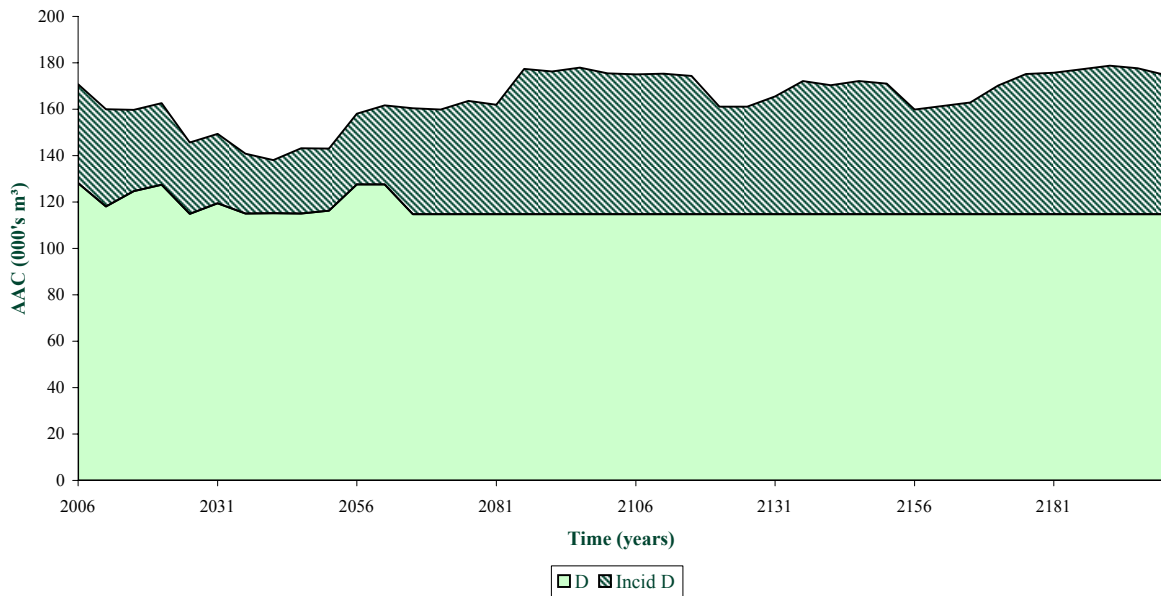
## FMU L2



### FMA and Non FMA Coniferous AAC by Cover Type



### FMA and Non-FMA Deciduous AAC by Cover Type

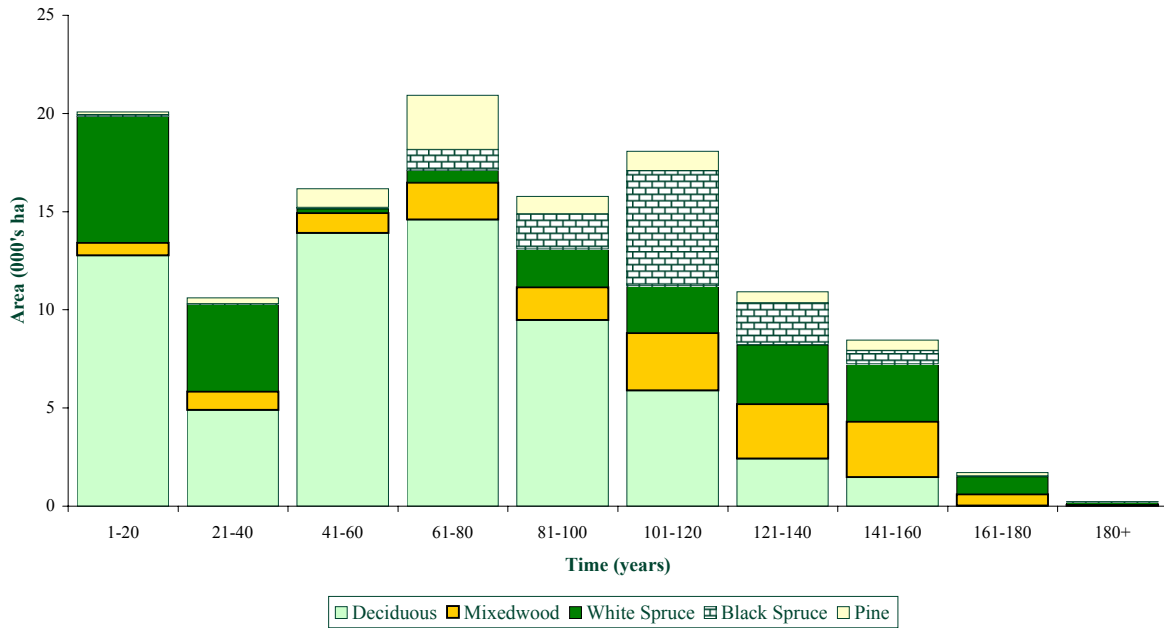


# The Alberta-Pacific FMA Area Timber Supply Analysis

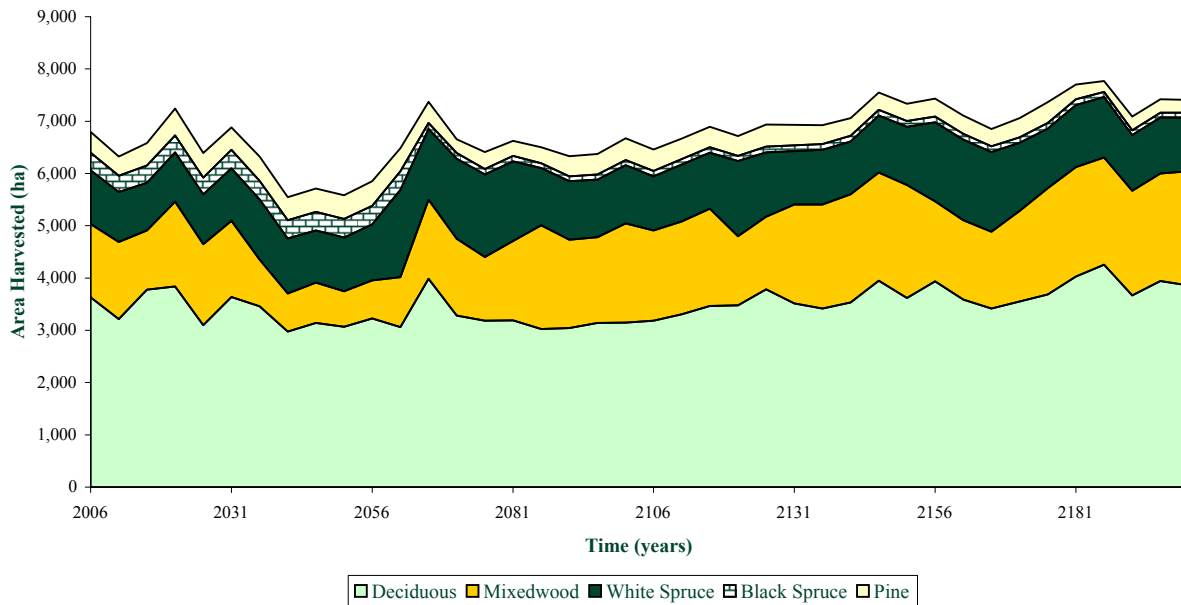
## FMU L2



### Initial Ageclass Structure by Cover Type



### Area Harvested by Cover Type

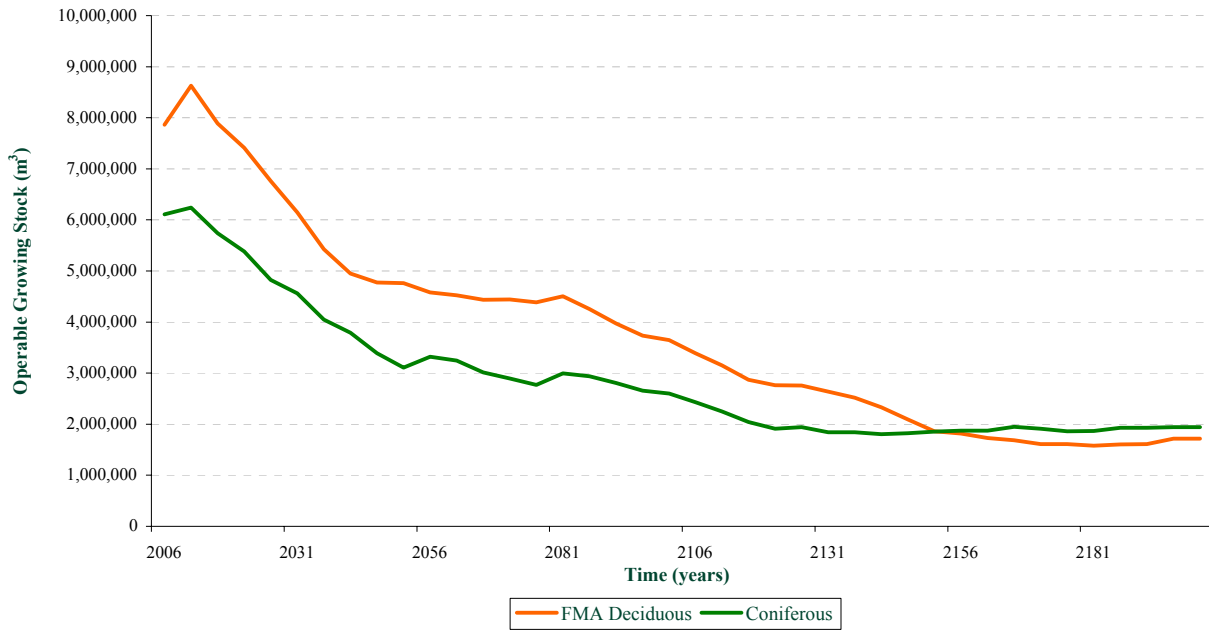


# The Alberta-Pacific FMA Area Timber Supply Analysis

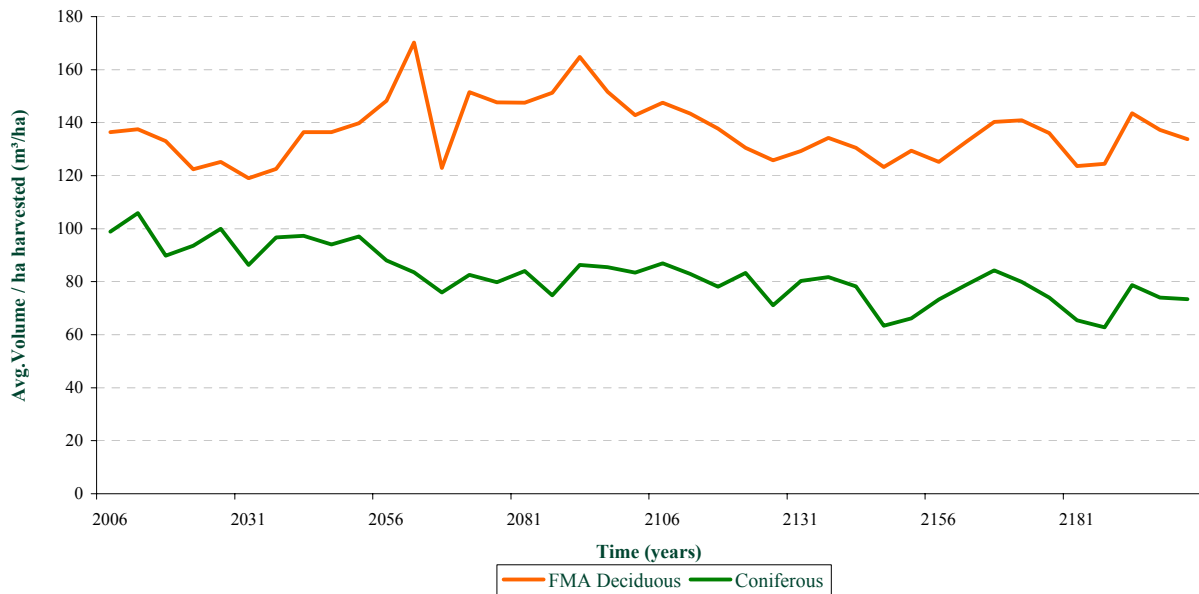
## FMU L2



### Growing Stock Over Time



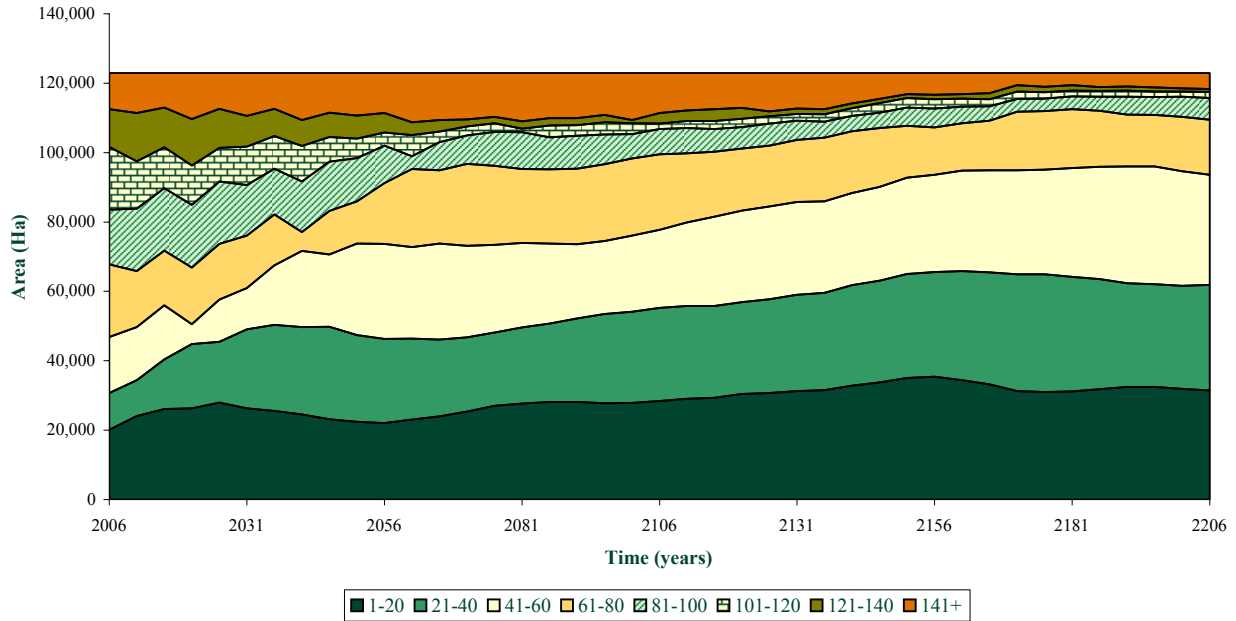
### Average Volume Per Ha Harvested Over Time



# The Alberta-Pacific FMA Area Timber Supply Analysis FMU L2



## Age Class Distribution



## Average Harvest Ages Over Time

Species Group	Now	+ 50 Years	+ 100 Years	+ 150 Years	+ 200 Years
Deciduous	116	99	77	72	63
Deciduous/Coniferous	124	108	73	63	63
Coniferous/Deciduous	145	131	89	80	80
White Spruce	148	140	89	85	92
Black Spruce	127	139	175	120	120
Pine	120	117	80	89	98