

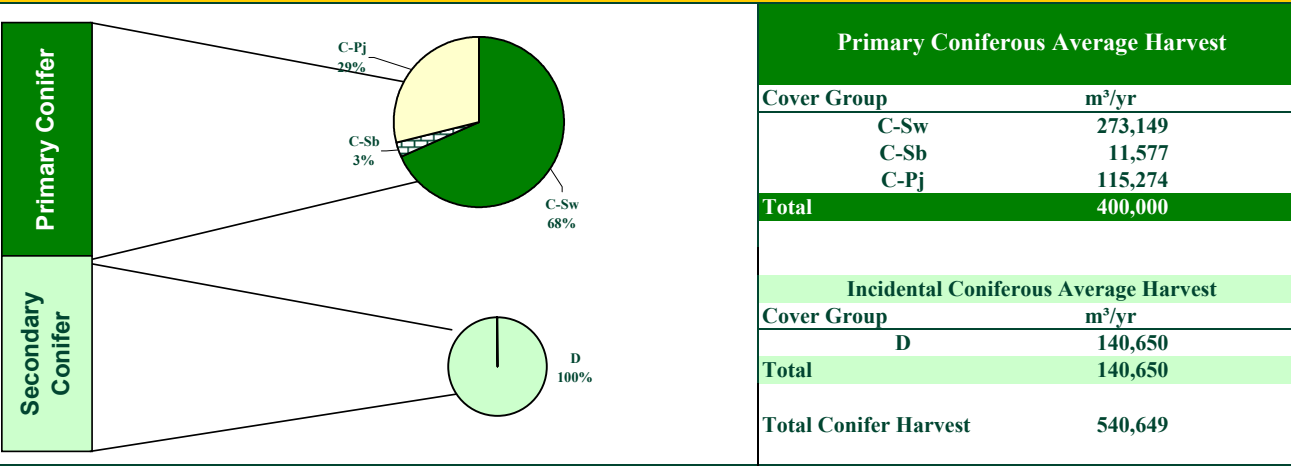
# The Alberta-Pacific FMA Area Timber Supply Analysis

## FMU A15

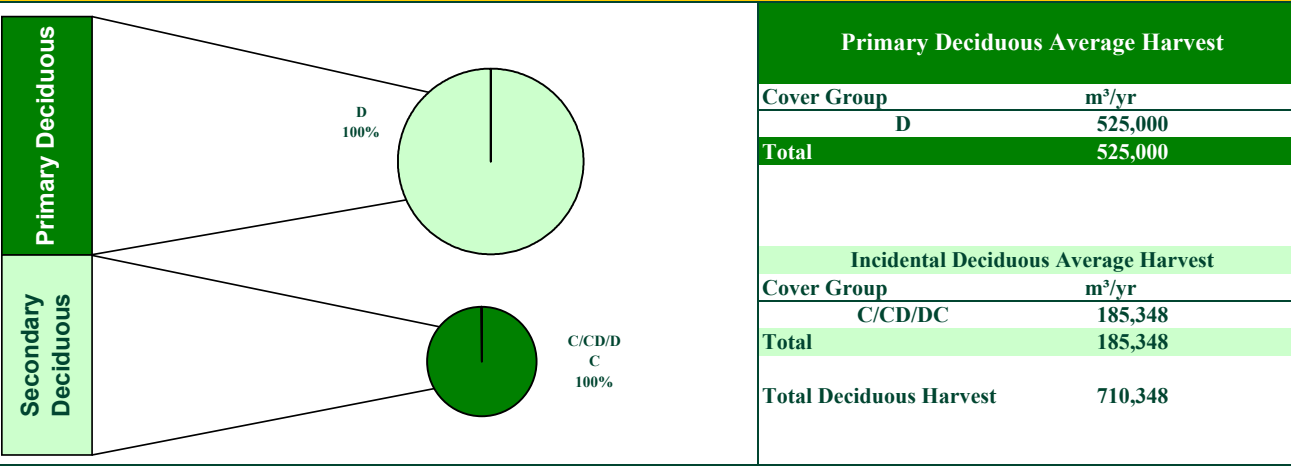


Summary Category (20-Year Average)	Prim Coniferous	Prim Deciduous	Total
Net Harvestable Landbase (ha)	-	-	311,827
LRSY (m³/yr)	257,768	377,446	635,215
Woodstock™ Aspatial AAC (m³/yr)	400,000	525,000	925,000
Stand Retention Deduction	0%	0%	-
Cull Deduction	2%	4%	-

### Woodstock Aspatial Coniferous Harvest Summary by Cover Type: 20-Year Average



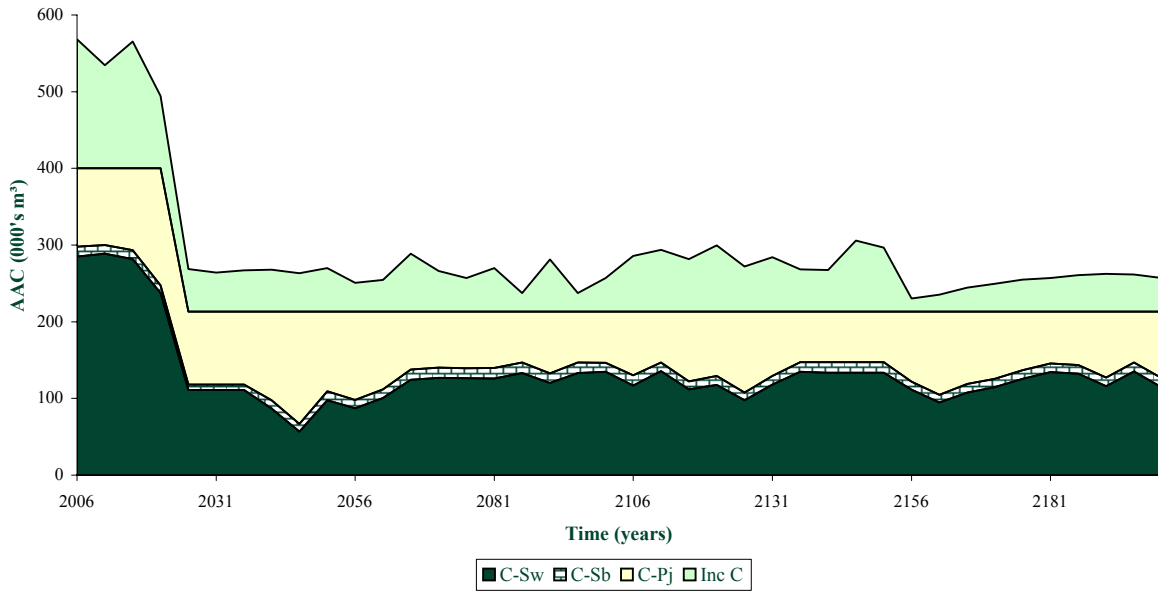
### Woodstock Aspatial Deciduous Harvest Summary by Cover Type: 20-Year Average



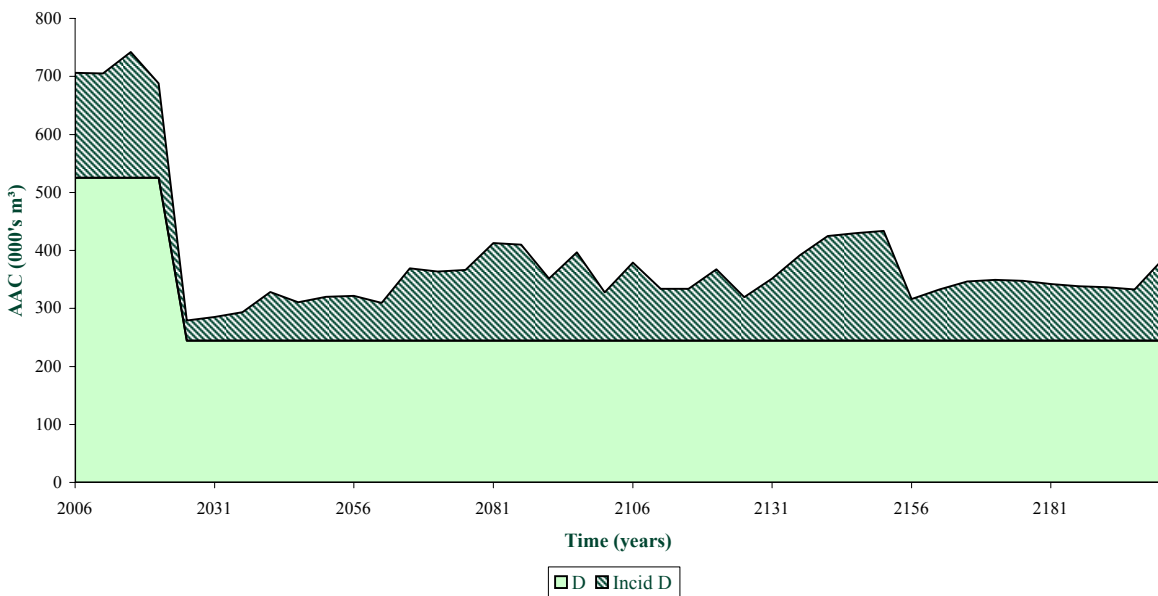
# The Alberta-Pacific FMA Area Timber Supply Analysis FMU A15



## FMA and Non FMA Coniferous AAC by Cover Type



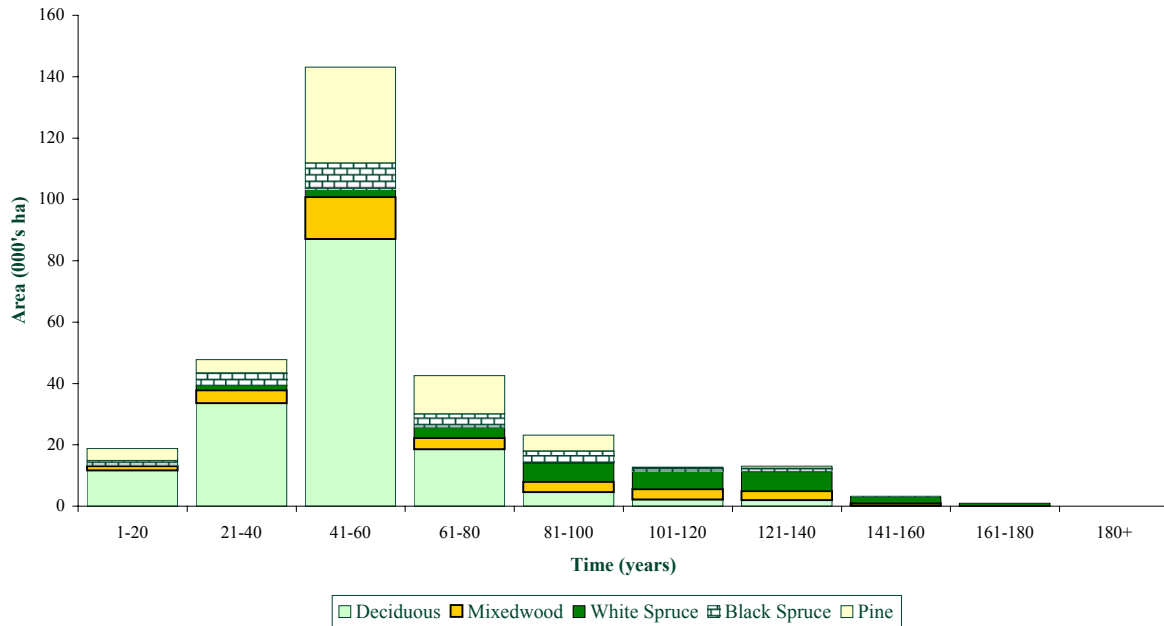
## FMA and Non-FMA Deciduous AAC by Cover Type



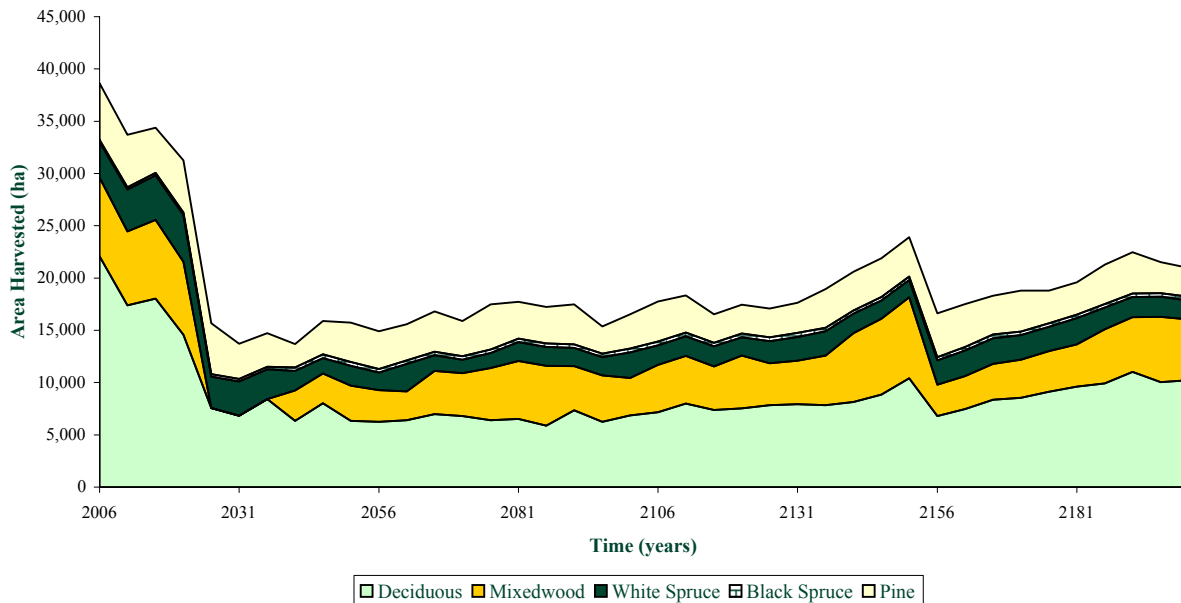
# The Alberta-Pacific FMA Area Timber Supply Analysis FMU A15



## Initial Ageclass Structure by Cover Type



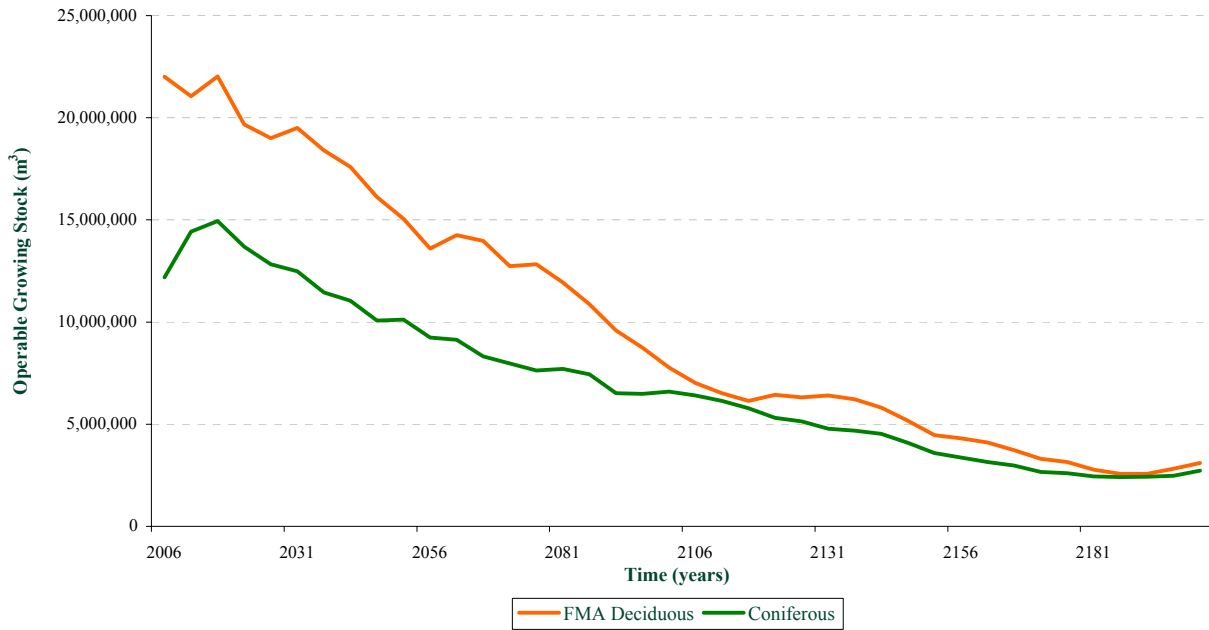
## Area Harvested by Cover Type



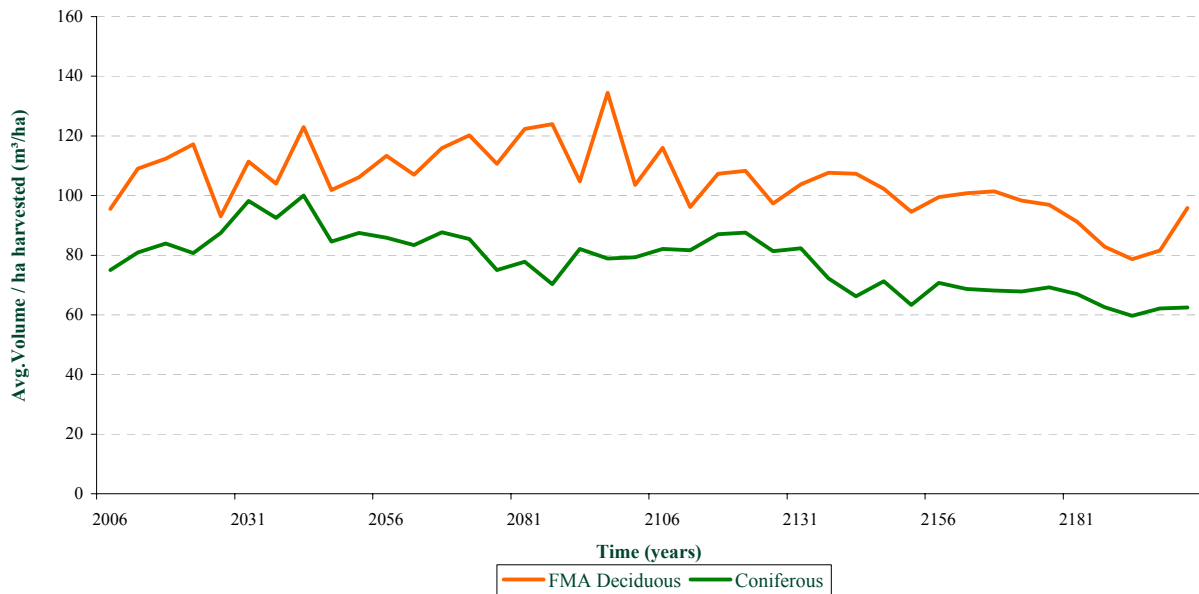
# The Alberta-Pacific FMA Area Timber Supply Analysis FMU A15



## Growing Stock Over Time



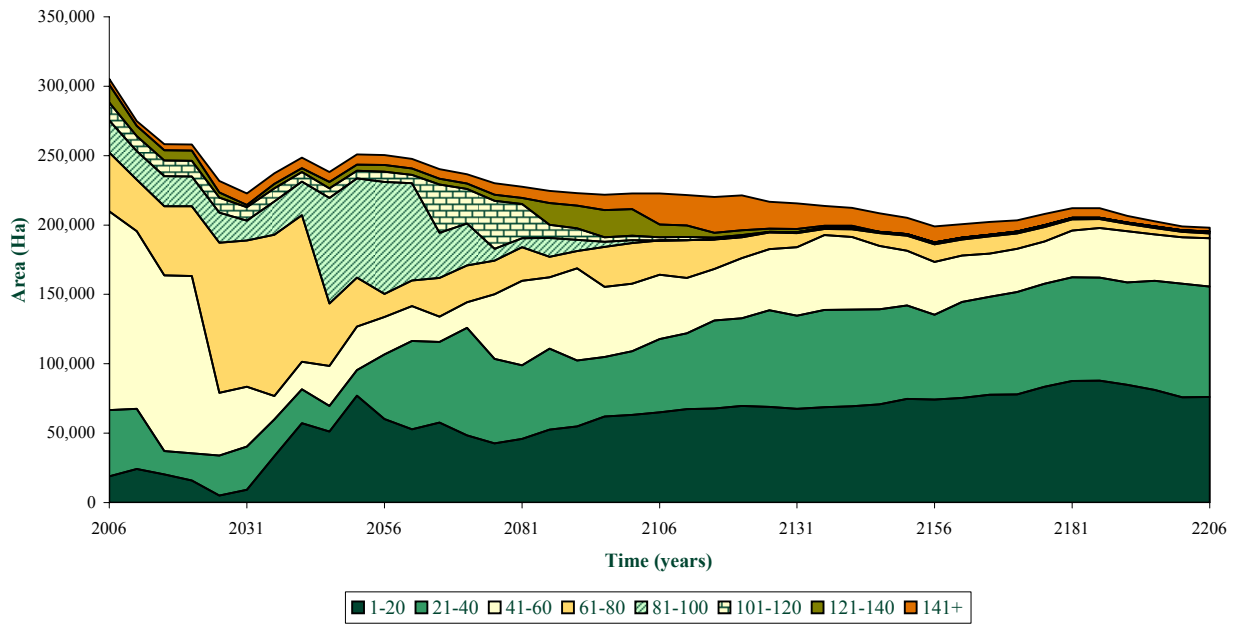
## Average Volume Per Ha Harvested Over Time



# The Alberta-Pacific FMA Area Timber Supply Analysis FMU A15



## Age Class Distribution



## Average Harvest Ages Over Time

Species Group	Now	+ 50 Years	+ 100 Years	+ 150 Years	+ 200 Years
Deciduous	88	120	85	69	61
Deciduous/Coniferous	128	107	100	63	72
Coniferous/Deciduous	152	117	105	0	90
White Spruce	143	191	82	98	80
Black Spruce	136	128	165	121	120
Pine	108	121	89	83	83