

2006-07 Spread: CWB Initial Payment and Pool Return Outlook (PRO)

The following graphs provide a pictorial view of what is happening to the difference between the Canadian Wheat Board (CWB) initial price (including adjustments) and the Pool Return Outlook (PRO) for the 2006-07 crop year.

The initial payment is the value that is backed by the federal government guarantee; this is the amount that farmers will receive upon delivery. Initial payment adjustments are announced throughout the year and will be updated on this website.

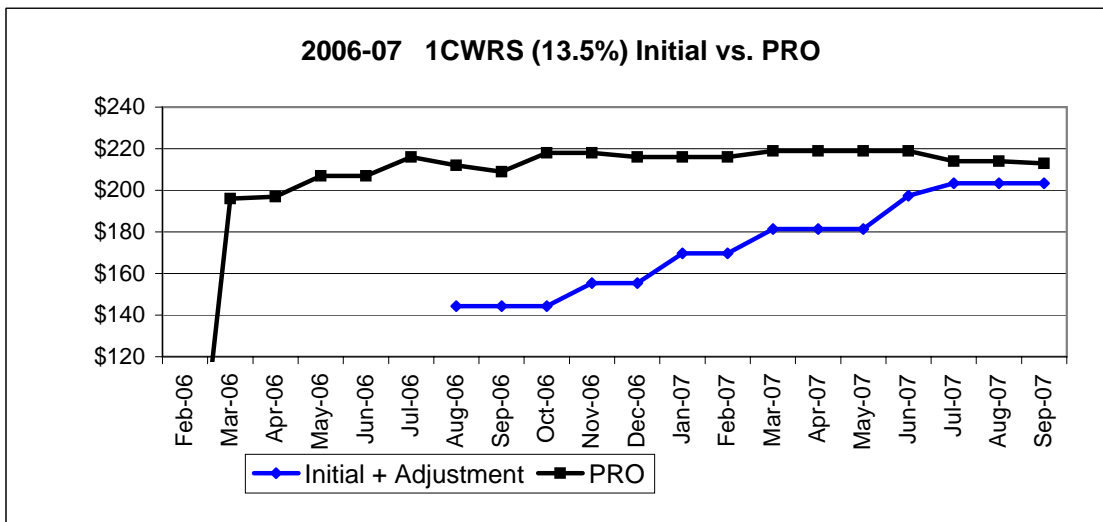
The PRO is the CWB's estimate of the crop year returns.

Notes:

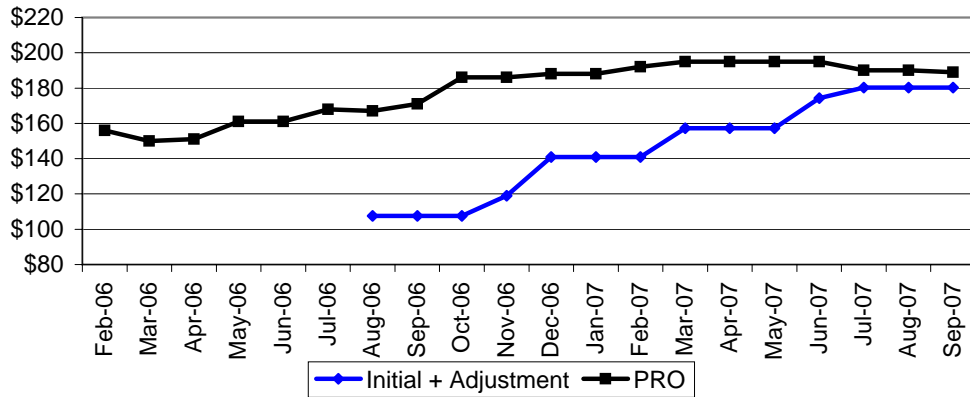
Feed Barley Pool B, first PRO published November 2006.

All values are in-store Vancouver or St. Lawrence.

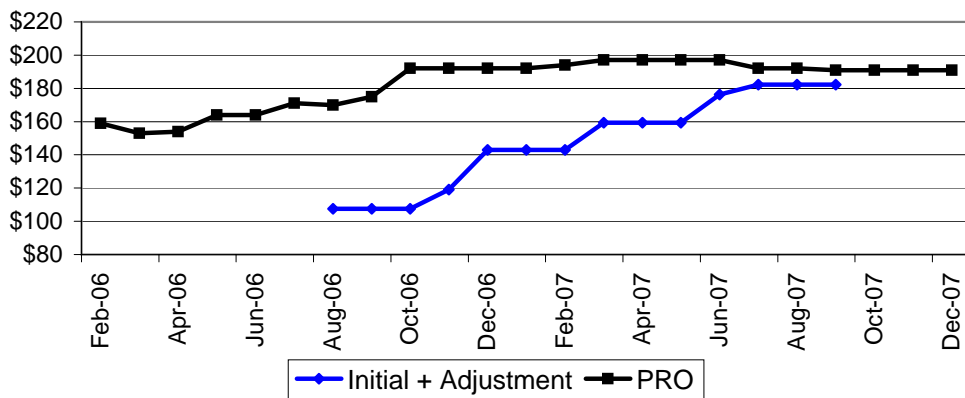
Latest update: **26-Oct 2007**



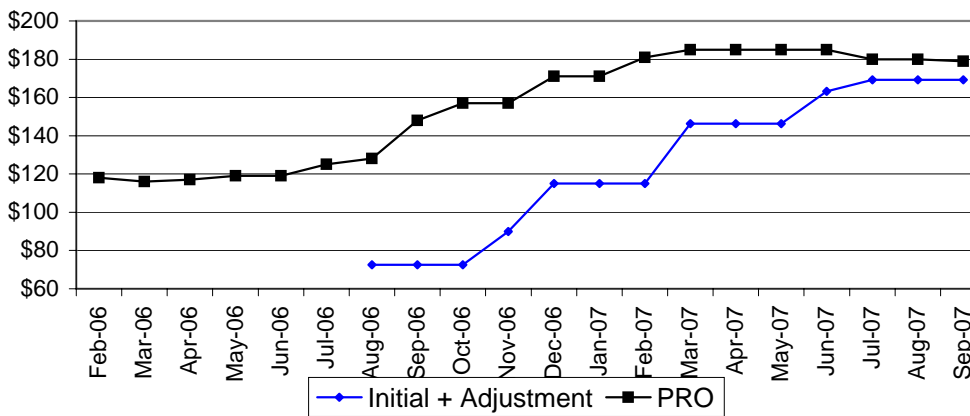
2006-07 1 CWRW Initial vs. PRO



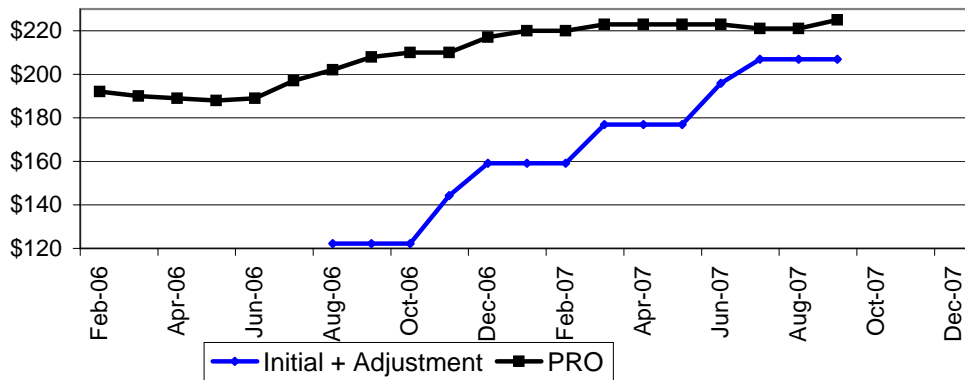
2005-06 1CPSR Initial vs. PRO



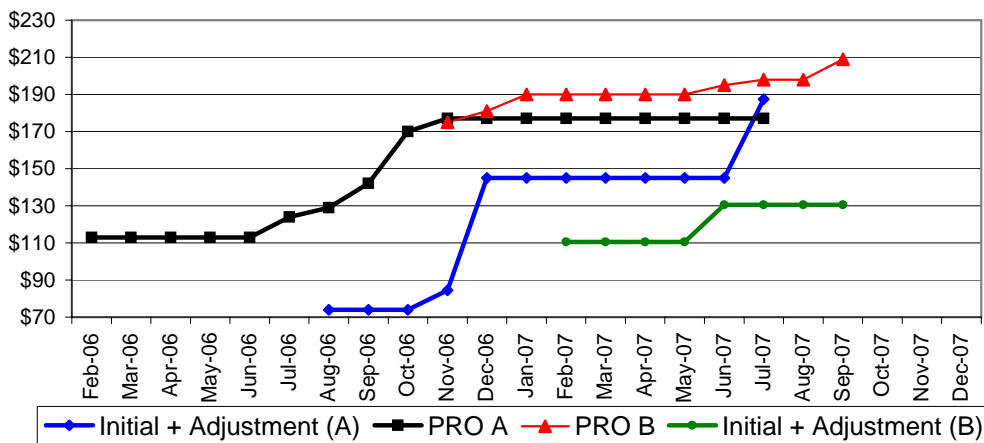
2005-06 CWF (Feed Wheat) - Initial vs. PRO



2005-06 1CWAD (13%) - Initial vs. PRO



2005-06 1 CW (feed barley) - Initial vs. PRO



2005-06 SS CW 2-Row (Malt Barley) - Initial vs. PRO

