

Condition Score 4

A cow in heavy condition. The individual short ribs can be felt only when firm pressure is applied. Together they are rounded over with no shelf effect. The ridge of the backbone is flattening over the loin and rump areas and rounded over the chine. The hook bones are smoothed over and the span between the hook bones over the backbone is flat. The area around the pin bones is beginning to show patches of fat deposit.

Figure 6 - Condition Score 4

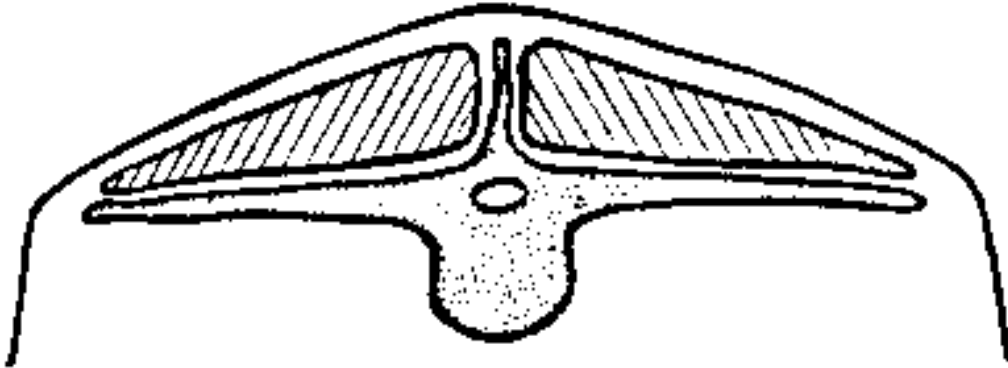
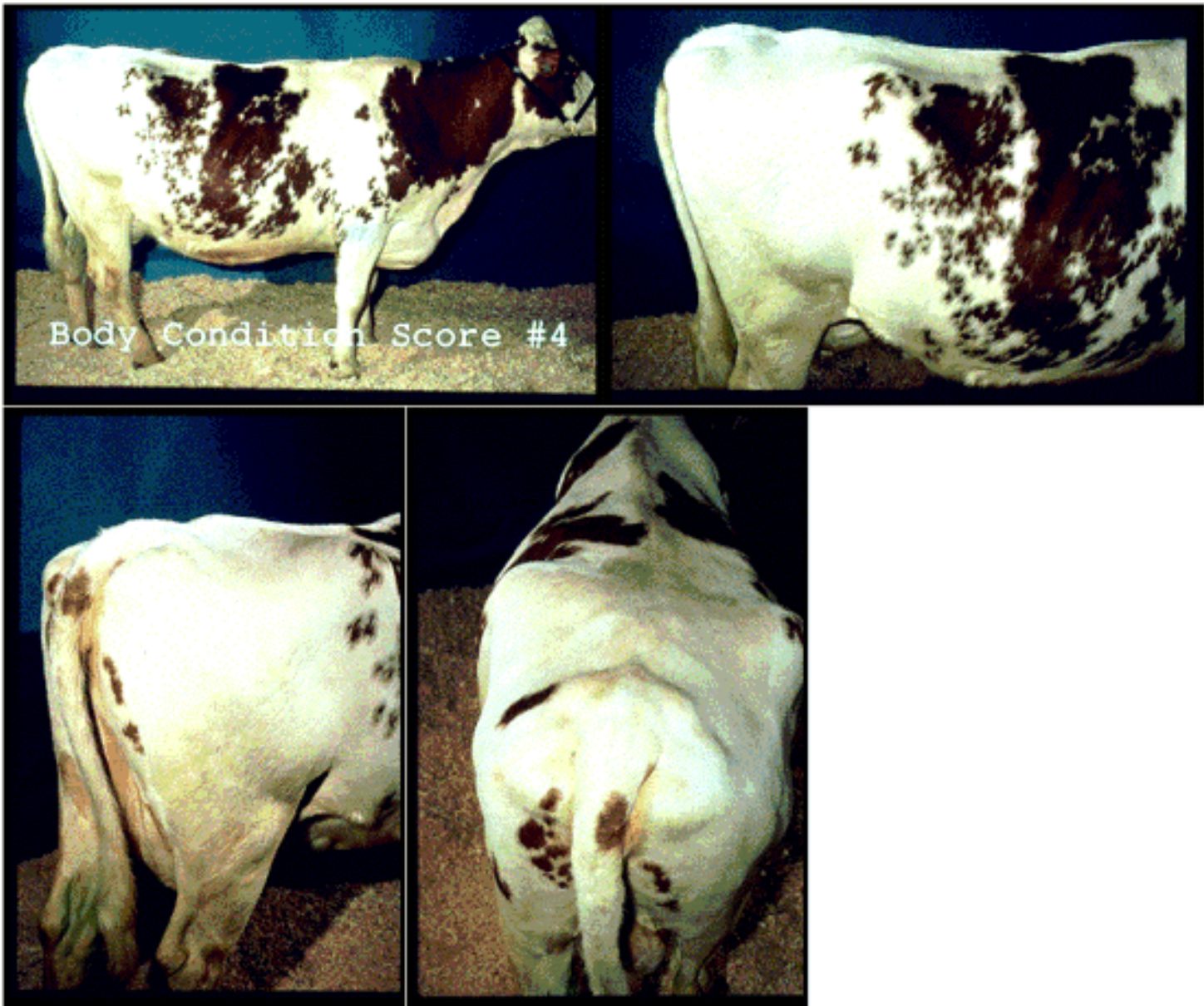


Photo 4 - Condition Score 4 (heavy cow)



| [Top of Page](#) |

Condition Score 5

A fat cow. The bone structure of the topline, hook and pin bones and the short ribs is not visible. Fat deposits around the tailbone and over the ribs are obvious. The thighs curve out, the brisket and flanks are heavy and the chine very round.

Figure 7 - Condition Score 5

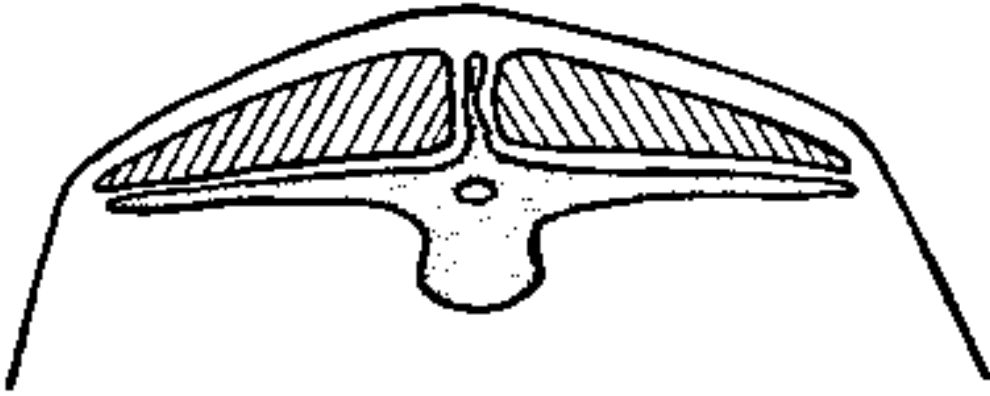


Photo 5 - Condition Score 5 (fat cow)

